

ST. TAMMANY PARISH COUNCIL

ORDINANCE

ORDINANCE CALENDAR NO: 5171

ORDINANCE COUNCIL SERIES NO: \_\_\_\_\_

COUNCIL SPONSOR: MR. SHARP

PROVIDED BY: COUNCIL OFFICE

INTRODUCED BY: \_\_\_\_\_

SECONDED BY: \_\_\_\_\_

ON THE 3 DAY OF APRIL , 2014

ORDINANCE AMENDING THE OFFICIAL ZONING MAP OF ST. TAMMANY PARISH, LA. TO RECLASSIFY A CERTAIN PARCEL LOCATED ON THE SOUTH SIDE OF NORTH 12TH STREET, EAST OF US HIGHWAY 190 AND WHICH COMPRISES A TOTAL 1.48 ACRES OF LAND MORE OR LESS, FROM ITS PRESENT A-2 (SUBURBAN) AND PUD (PLANNED UNIT DEVELOPMENT) DISTRICTS TO HC-2 (HIGHWAY COMMERCIAL) DISTRICT. (WARD 3, DISTRICT 2). (ZC14-04-028)

WHEREAS, the Zoning Commission of the Parish of St. Tammany after hearing in accordance with law, Case No. ZC0714-04-028, has recommended to the Council of the Parish of St. Tammany, Louisiana, that the zoning classification of the above referenced area be changed from its present A-2 (Suburban) and PUD (Planned Unit Development) Districts to HC-2 (Highway Commercial) District see Exhibit "A" for complete boundaries: and

WHEREAS, the St. Tammany Parish Council has held its public hearing in accordance with law; and

WHEREAS, the St. Tammany Parish Council has found it necessary for the purpose of protecting the public health, safety and general welfare, to designate the above described property as HC-2 (Highway Commercial) District.

THE PARISH OF ST. TAMMANY HEREBY ORDAINS: in regular session convened that:

SECTION I: The zoning classification of the above described property is hereby changed from its present A-2 (Suburban) and PUD (Planned Unit Development) Districts to HC-2 (Highway Commercial) District

SECTION II: The official zoning map of the Parish of St. Tammany shall be and is hereby amended to incorporate the zoning reclassification specified in Section I hereof.

REPEAL: All ordinances or parts of Ordinances in conflict herewith are hereby repealed.

SEVERABILITY: If any provision of this Ordinance shall be held to be invalid, such invalidity shall not affect other provisions herein which can be given effect without the invalid provision and to this end the provisions of this Ordinance are hereby declared to be severable.

EFFECTIVE DATE: This Ordinance shall become effective fifteen (15) days after adoption.

MOVED FOR ADOPTION BY: \_\_\_\_\_ SECONDED BY: \_\_\_\_\_

WHEREUPON THIS ORDINANCE WAS SUBMITTED TO A VOTE AND RESULTED IN THE FOLLOWING:

YEAS: \_\_\_\_\_

NAYS: \_\_\_\_\_

ABSTAIN: \_\_\_\_\_

ABSENT: \_\_\_\_\_

THIS ORDINANCE WAS DECLARED DULY ADOPTED AT A REGULAR MEETING OF THE PARISH COUNCIL ON THE 1 DAY OF MAY, 2014; AND BECOMES ORDINANCE COUNCIL SERIES NO \_\_\_\_\_.

\_\_\_\_\_  
R. REID FALCONER, AIA, COUNCIL CHAIRMAN

ATTEST:

\_\_\_\_\_  
THERESA L. FORD, COUNCIL CLERK

\_\_\_\_\_  
PATRICIA P. BRISTER, PARISH PRESIDENT

Published Introduction: March 27, 2014

Published Adoption: \_\_\_\_\_, 2014

Delivered to Parish President: \_\_\_\_\_, 2014 at \_\_\_\_\_

Returned to Council Clerk: \_\_\_\_\_, 2014 at \_\_\_\_\_

**FONTCUBERTA SURVEYS, INC.**

P. O. Box 1792  
Covington, LA 70434-1792  
Phone: (985) 893-7461  
Fax: (985) 893-7164

October 12, 2007

Legal Description  
Of Property of  
Abita View, LLC  
(1.16 Acres)

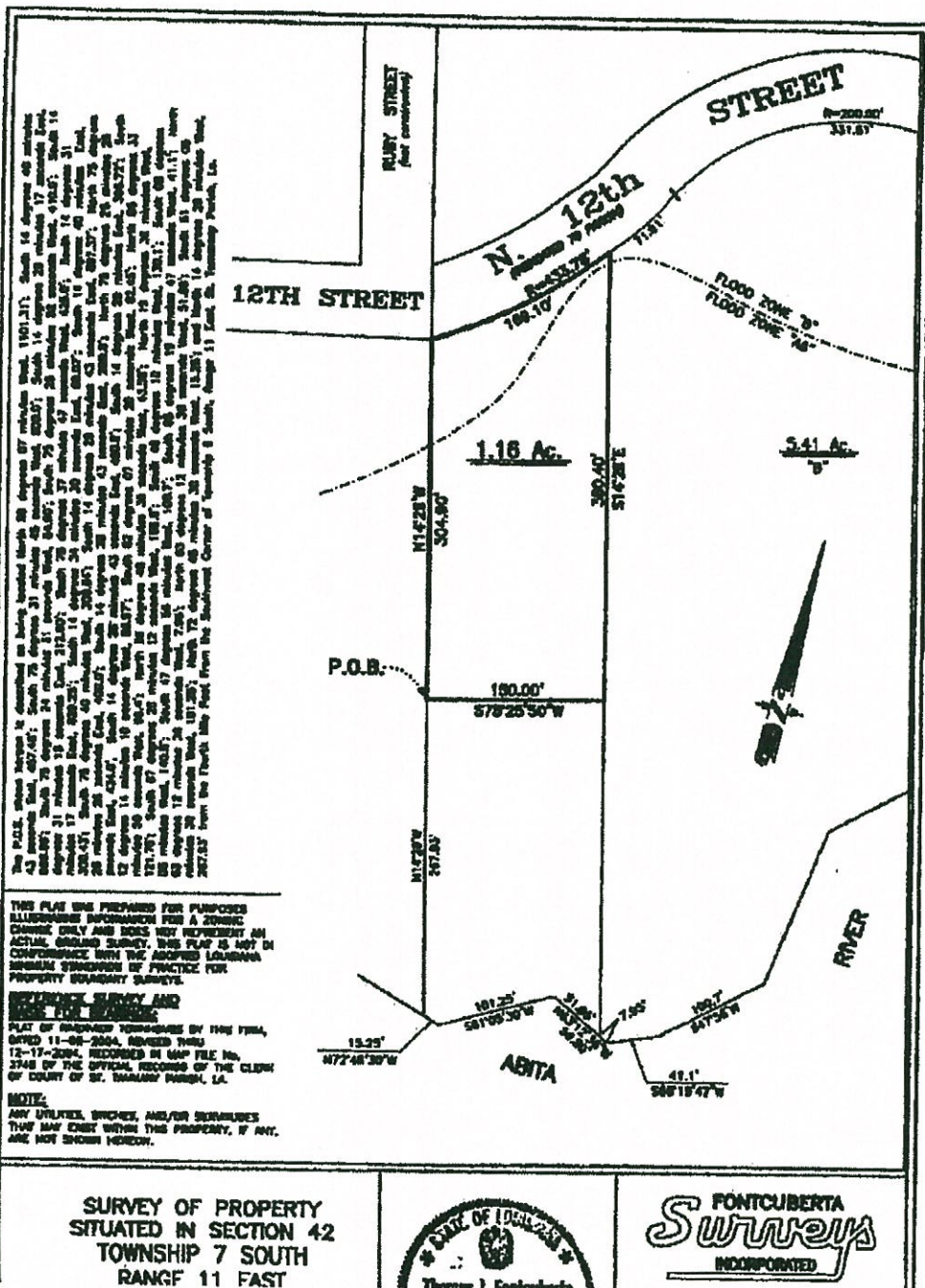
A Certain Piece or Parcel of Ground situated in Section 42, Township 7 South, Range 11 East, Parish of St. Tammany, State of Louisiana, and more fully described as follows:

Commence at the Fourth Mile Post From the Southwest Corner of Township 6 South, Range 11 East, thence measure North 89 degrees 07 minutes West, a distance of 1101.31 feet to a point; thence measure South 14 degrees 40 minutes 43 seconds East, a distance of 457.46 feet to a point; thence measure South 75 degrees 31 minutes 45 seconds West, a distance of 600.0 feet to a point; thence measure South 14 degrees 29 minutes 17 seconds East, a distance of 599.58 feet to a point; thence measure South 75 degrees 24 minutes 51 seconds West, a distance of 64.90 feet to a point; thence measure South 75 degrees 26 minutes 52 seconds West, a distance of 410.0 feet to a point; thence measure South 14 degrees 31 minutes 16 seconds East, a distance of 212.60 feet to a point; thence measure South 75 degrees 37 minutes 47 seconds West, a distance of 425.0 feet to a point; thence measure South 14 degrees 31 minutes 17 seconds East, a distance of 629.25 feet to a point; thence measure South 14 degrees 34 minutes 30 seconds East, a distance of 60.07 feet to a point; thence measure South 14 degrees 40 minutes East, a distance of 300.43 feet to a point; thence measure South 75 degrees 40 minutes West, a distance of 300.64 feet to a point; thence measure South 14 degrees 28 minutes 43 seconds East, a distance of 897.37 feet to a point; thence measure North 75 degrees 26 minutes 26 seconds East, a distance of 400.0 feet to a point; thence measure South 14 degrees 28 minutes 43 seconds East, a distance of 200.0 feet to a point; thence measure North 75 degrees 26 minutes 26 seconds East, a distance of 434.0 feet to a point; thence measure South 14 degrees 28 minutes 43 seconds East, a distance of 460.0 feet to a point; thence measure South 14 degrees 29 minutes East, a distance of 395.72 feet to a point; thence measure South 12 degrees 14 minutes 10 seconds West a distance of 86.97 feet to a point; thence measure South 62 degrees 07 minutes 20 seconds West a distance of 62.45 feet to a point; thence measure North 86 degrees 33 minutes 50 seconds West a distance of 55.4 feet to a point; thence measure North 56 degrees 48 minutes 35 seconds West a distance of 43.56 feet to a point; thence measure North 19 degrees 36 minutes West a distance of 121.75 feet to a point; thence measure South 87 degrees 25 minutes 12 seconds West a distance of 189.6 feet to a point; Thence measure South 48 degrees 10 minutes West a distance of 130.1 feet to a point; thence measure South 08 degrees 08 minutes West a distance of 140.8 feet to a point; thence measure South 47 degrees 56

minutes West a distance of 100.7 feet to a point; thence measure South 68 degrees 19 minutes 47 seconds West a distance of 41.1 feet to a point; thence measure North 63 degrees 12 minutes 36 seconds West, a distance of 7.95 feet to a point; thence continue North 63 degrees 12 minutes 36 seconds West, a distance of 51.85 feet a point; thence measure South 61 degrees 05 minutes 30 seconds West, a distance of 101.25 feet to a point; thence measure North 72 degrees 48 minutes 30 seconds West, a distance of 15.25 feet to a point; thence measure North 14 degrees 29 minutes West, a distance of 267.93 feet to a point; the Point of Beginning.

From the Point of Beginning, continue North 14 degrees 29 minutes West, a distance of 304.90 feet to a point; thence measure in a northeasterly direction along the arc of a curve to the left having a radius of 433.78 feet, a distance of 169.10 feet to a point; thence measure South 14 degrees 29 minutes East, a distance of 380.40 feet back to the Point of Beginning, containing 1.16 Acres.









0 100 200 Feet

