

ST. TAMMANY PARISH COUNCIL

ORDINANCE

ORDINANCE CALENDAR NO: 5109

ORDINANCE COUNCIL SERIES NO: _____

COUNCIL SPONSOR: MR. ARTIGUE

PROVIDED BY: COUNCIL ATTORNEY

INTRODUCED BY: MR. STEFANCIK

SECONDED BY: MR. ARTIGUE

ON THE 5 DAY OF DECEMBER , 2013

PLEASE SEE ATTACHED FOR COMPLETE DOCUMENT.
ORDINANCE TO AMEND ST. TAMMANY PARISH CODE OF ORDINANCES, CHAPTER 7 DRAINAGE AND FLOOD CONTROL, ARTICLE III DRAINAGE DISTRICT NO. 2, SEC. 7-061.00 REORGANIZATION, BOUNDARIES, TO AMEND AND REESTABLISH THE BOUNDARIES OF DRAINAGE DISTRICT NO. 2. (WARD 9 DISTRICT13)

WHEREAS, **SEE ATTACHED**

REPEAL: All ordinances or parts of Ordinances in conflict herewith are hereby repealed.

SEVERABILITY: If any provision of this Ordinance shall be held to be invalid, such invalidity shall not affect other provisions herein which can be given effect without the invalid provision and to this end the provisions of this Ordinance are hereby declared to be severable.

EFFECTIVE DATE: This Ordinance shall become effective fifteen (15) days after adoption.

MOVED FOR ADOPTION BY: _____ SECONDED BY: _____

WHEREUPON THIS ORDINANCE WAS SUBMITTED TO A VOTE AND RESULTED IN THE FOLLOWING:

YEAS: _____

NAYS: _____

ABSTAIN: _____

ABSENT: _____

THIS ORDINANCE WAS DECLARED DULY ADOPTED AT A REGULAR MEETING OF THE PARISH COUNCIL ON THE 6 DAY OF FEBRUARY , 2014 ; AND BECOMES ORDINANCE COUNCIL SERIES NO _____.

R. REID FALCONER, AIA, COUNCIL CHAIRMAN

ATTEST:

THERESA L. FORD, COUNCIL CLERK

PATRICIA P. BRISTER, PARISH PRESIDENT

Published Introduction: November 28 , 2013

Published Adoption: _____, 2014

Delivered to Parish President: _____, 2014 at _____

Returned to Council Clerk: _____, 2014 at _____

ST. TAMMANY PARISH COUNCIL

ORDINANCE

ORDINANCE CALENDAR NO. 5109 ORDINANCE COUNCIL SERIES NO. _____

COUNCIL SPONSOR MR. ARTIGUE PROVIDED BY ASST. COUNCIL ATTORNEY

INTRODUCED BY: MR. STEFANCIK SECONDED BY: MR. ARTIGUE

ON THE 5TH DAY OF DECEMBER, 2013

ORDINANCE TO AMEND ST. TAMMANY PARISH CODE OF ORDINANCES, CHAPTER 7 DRAINAGE AND FLOOD CONTROL, ARTICLE III DRAINAGE DISTRICT NO. 2, SEC. 7-061.00 REORGANIZATION, BOUNDARIES, TO AMEND AND REESTABLISH THE BOUNDARIES OF DRAINAGE DISTRICT NO. 2. (WARD 9, DISTRICT 13)

WHEREAS, St. Tammany Parish Drainage District No. 2 (“District”), was created by Ordinance of the Police Jury adopted November 10, 1925, and said District was reorganized by Ordinance Calendar No. 836, Police Jury Series No. 84-01, adopted January 19, 1984. Thereafter, the boundaries of Drainage District No. 2 were altered and diminished by Ordinance Calendar No. 1106, Police Jury Series No. 88-991, adopted September 15, 1988; and

WHEREAS, on August 18, 1994, the St. Tammany Parish Police Jury adopted Ordinance Calendar No. 2248, Police Jury Series No. 94-2057, altering and reorganizing the geographical boundaries of Drainage District No. 2 with that portion of land located on the east side of Interstate 10 remaining as St. Tammany Parish Drainage District No. 2 and that portion of land located on the western side of Interstate 10 being formed into a new Drainage District, St. Tammany Parish Drainage District No. 5, all as per plats of surveys prepared by J. J. Krebs & Sons, Inc., dated February 24, 1994, Job No. 945232, attached thereto as Exhibit “1”; and

WHEREAS, in accordance with La.R.S. 38:1614, the Board of Commissioners of St. Tammany Parish Drainage District No. 2 has adopted the attached Resolution with attachments (Exhibit 1, 6 Pages), concurring in the amendment of the boundaries of said district to diminish the district by removing therefrom that portion of property that is no longer receiving any drainage benefits from St. Tammany Parish Drainage District No. 2.; and

WHEREAS, in accordance with La.R.S. 38:1614, and as evidenced by the attached Resolution of the Board of Commissioners of St. Tammany Parish Drainage District No. 2, said District does not have any outstanding bonds or indebtedness; and

WHEREAS, in accordance with La.R.S. 38:1614, the Chief Engineer of St. Tammany Parish Drainage District No. 2 has concurred in the change of boundaries of the District as evidence by attached Exhibit 2.

THE PARISH OF ST. TAMMANY HEREBY ORDAINS that the St. Tammany Parish Code of Ordinances, Chapter 7, Drainage and Flood Control, Article III Drainage District No. 2, Section 7-061.00, Reorganization, Boundaries, is hereby amended to diminish and reestablish the boundaries of Drainage District No. 2, which reestablished boundaries shall be as depicted on the attached survey of R.W. Krebs, L.L.C., dated October 24, 2013, Job # 132963 (Exhibit 3), and as more particularly described as follows, to-wit:

DRAINAGE DISTRICT #2

A CERTAIN PIECE OR PORTION OF GROUND SITUATED IN THE STATE OF LOUISIANA, PARISH OF ST. TAMMANY, SECTION 34 AND A PORTION OF SECTIONS 26, 27, 33 AND 35, T9S-R14E AND A PORTION OF SECTIONS 4, T10S-R14E, DESIGNATED AS DRAINAGE DISTRICT #2 AND MORE FULLY DESCRIBED AS FOLLOWS:

BEGINNING AT THE INTERSECTION OF THE SOUTHERLY RIGHT OF WAY LINE OF LAKESHORE BOULEVARD EAST AND THE EASTERLY RIGHT OF WAY LINE OF LAKESHORE BOULEVARD SOUTH; MEASURE THENCE S41°48'33"W A DISTANCE OF 129.66 FEET; THENCE WITH A CURVE TURNING TO THE RIGHT WITH AN ARC LENGTH OF 149.80 FEET, WITH A RADIUS OF 500.00 FEET, WITH A CHORD BEARING OF S50°23'32"W, WITH A CHORD LENGTH OF 149.24 FEET; THENCE N48°11'36"W A DISTANCE OF 92.72 FEET; THENCE S41°48'56"W A DISTANCE OF 98.35 FEET; THENCE WITH A CURVE TURNING TO THE LEFT WITH AN ARC LENGTH OF 57.24 FEET, WITH A RADIUS OF 550.00 FEET, WITH A CHORD BEARING OF S38°49'40"W, WITH A CHORD LENGTH OF 57.22 FEET; THENCE WITH A REVERSE CURVE TURNING TO THE RIGHT WITH AN ARC LENGTH OF 17.33 FEET, WITH A RADIUS OF 300.00 FEET, WITH A CHORD BEARING OF S37°30'02"W, WITH A CHORD LENGTH OF 17.32 FEET; THENCE N48°11'27"W A DISTANCE OF 984.91 FEET; THENCE S41°48'33"W A DISTANCE OF 227.99 FEET; THENCE N48°11'26"W A DISTANCE OF 577.37 FEET; THENCE S41°48'33"W A DISTANCE OF 15.00 FEET; THENCE N48°11'27"W A DISTANCE OF 552.71 FEET; THENCE WITH A CURVE TURNING TO THE LEFT WITH AN ARC LENGTH OF 262.97 FEET, WITH A RADIUS OF 349.00 FEET, WITH A CHORD BEARING OF N69°46'35"W, WITH A CHORD LENGTH OF 256.79 FEET; THENCE S88°38'16"W A DISTANCE OF 407.63 FEET; THENCE S88°14'20"W A DISTANCE OF 5.57 FEET; THENCE S80°18'38"W A DISTANCE OF 152.96 FEET;

THENCE WITH A CURVE TURNING TO THE LEFT WITH AN ARC LENGTH OF 140.49 FEET, WITH A RADIUS OF 487.52 FEET, WITH A CHORD BEARING OF S73°52'07"W, WITH A CHORD LENGTH OF 140.00 FEET; THENCE S69°35'47"W A DISTANCE OF 80.00 FEET;

THENCE WITH A CURVE TURNING TO THE LEFT WITH AN ARC LENGTH OF 239.70 FEET, WITH A RADIUS OF 460.00 FEET, WITH A CHORD BEARING OF S41°19'45"W, WITH A CHORD LENGTH OF 237.00 FEET; THENCE S26°23'33"W A DISTANCE OF 295.73 FEET;

THENCE WITH A CURVE TURNING TO THE LEFT WITH AN ARC LENGTH OF 135.52 FEET, WITH A RADIUS OF 490.00 FEET, WITH A CHORD BEARING OF S18°28'10"W, WITH A CHORD LENGTH OF 135.09 FEET; THENCE WITH A REVERSE CURVE TURNING TO THE RIGHT WITH AN ARC LENGTH OF 82.97 FEET, WITH A RADIUS OF 300.00 FEET, WITH A CHORD BEARING OF S18°28'10"W, WITH A CHORD LENGTH OF 82.70 FEET; THENCE S26°23'32"W A DISTANCE OF 1433.47 FEET; THENCE N63°36'27"W A DISTANCE OF 82.01 FEET; THENCE S26°23'33"W A DISTANCE OF 236.88 FEET; THENCE S63°36'27"E A DISTANCE OF 112.01 FEET; THENCE S26°23'33"W A DISTANCE OF 125.00 FEET; THENCE N63°36'27"W A DISTANCE OF 125.00 FEET; THENCE S26°23'33"W A DISTANCE OF 626.33 FEET; THENCE N69°12'15"W A DISTANCE OF 1.79 FEET; THENCE S28°47'45"W A DISTANCE OF 428.00 FEET; THENCE N62°13'15"W A DISTANCE OF 460.40 FEET; THENCE N55°36'00"W A DISTANCE OF 561.77 FEET; THENCE N25°33'06"W A DISTANCE OF 587.35 FEET; THENCE N41°48'35"E A DISTANCE OF 170.87 FEET;

THENCE N46°34'22"E A DISTANCE OF 602.08 FEET;

THENCE N41°48'33"E A DISTANCE OF 2810.65 FEET; THENCE WITH A CURVE TURNING TO THE LEFT WITH AN ARC LENGTH OF 682.06 FEET, WITH A RADIUS OF 1380.00 FEET, WITH A CHORD BEARING OF N07°26'09"E, WITH A CHORD LENGTH OF 675.13 FEET;

THENCE N06°43'24"W A DISTANCE OF 272.93 FEET; THENCE WITH A CURVE TURNING TO THE RIGHT WITH AN ARC LENGTH OF 313.41 FEET, WITH A RADIUS OF 370.00 FEET, WITH A CHORD BEARING OF N17°32'35"E, WITH A CHORD LENGTH OF 304.12 FEET;

THENCE N41°48'32"E A DISTANCE OF 100.00 FEET; THENCE WITH A CURVE TURNING TO THE LEFT WITH AN ARC LENGTH OF 141.37 FEET, WITH A RADIUS OF 90.00 FEET, WITH A CHORD BEARING OF N03°11'28"W, WITH A CHORD LENGTH OF 127.28 FEET; THENCE N48°11'27"W A DISTANCE OF 112.00 FEET; THENCE N41°48'33"E A DISTANCE OF 202.00 FEET; THENCE S48°11'27"E A DISTANCE OF 100.00 FEET; THENCE WITH A CURVE TURNING TO THE LEFT WITH AN ARC LENGTH OF 141.37 FEET, WITH A RADIUS OF 90.00 FEET, WITH A CHORD BEARING OF N86°48'33"E, WITH A CHORD LENGTH OF 127.28 FEET; THENCE N41°48'33"E A DISTANCE OF 100.00 FEET; THENCE WITH A CURVE TURNING TO THE RIGHT WITH AN ARC LENGTH OF 453.71 FEET, WITH A RADIUS OF 406.00 FEET, WITH A CHORD BEARING OF N73°49'25"E, WITH A CHORD LENGTH OF 430.47 FEET; THENCE S74°09'32"E A DISTANCE OF 152.53 FEET; THENCE WITH A CURVE TURNING TO THE LEFT WITH AN ARC LENGTH OF 299.07 FEET, WITH A RADIUS OF 540.00 FEET, WITH A CHORD BEARING OF N89°58'30"E, WITH A CHORD LENGTH OF 295.26 FEET; THENCE WITH A COMPOUND CURVE TURNING TO THE LEFT WITH AN ARC LENGTH OF 308.96 FEET, WITH A RADIUS OF 1440.00 FEET, WITH A CHORD BEARING OF N67°57'43"E, WITH A CHORD LENGTH OF 308.37 FEET; THENCE N41°48'33"E A DISTANCE OF 3678.88 FEET; THENCE WITH A CURVE TURNING TO THE LEFT WITH AN ARC LENGTH OF 1895.86 FEET, WITH A RADIUS OF 11234.16 FEET, WITH A CHORD BEARING OF N36°58'29"E, WITH A CHORD LENGTH OF 1893.61 FEET; THENCE S47°47'20"E A DISTANCE OF 455.56 FEET; THENCE WITH A CURVE TURNING TO THE RIGHT WITH AN ARC LENGTH OF 50.50 FEET, WITH A RADIUS OF 11684.16 FEET, WITH A CHORD BEARING OF S32°36'57"W, WITH A CHORD LENGTH OF 50.50 FEET; THENCE S48°35'43"E A DISTANCE OF 765.06 FEET; THENCE S40°39'21"W A DISTANCE OF 20.00 FEET; THENCE S49°20'39"E A DISTANCE OF 115.00 FEET; THENCE S00°32'00"W A DISTANCE OF 392.33 FEET; THENCE S04°19'35"W A DISTANCE OF 443.30 FEET; THENCE S37°04'01"W A DISTANCE OF 300.00 FEET; THENCE S40°49'27"W A DISTANCE OF 714.56 FEET; THENCE S41°48'33"W A DISTANCE OF 2500.01 FEET; THENCE N48°11'27"W A DISTANCE OF 108.80 FEET; THENCE S03°23'28"E A DISTANCE OF 1169.99 FEET; THENCE WITH A CURVE TURNING TO THE RIGHT WITH AN ARC LENGTH OF 423.53 FEET, WITH A RADIUS OF 1810.00 FEET, WITH A CHORD BEARING OF S03°18'45"W, WITH A CHORD LENGTH OF 422.57 FEET; THENCE S82°00'38"E A DISTANCE OF 552.44 FEET; THENCE N89°38'41"E A DISTANCE OF 463.56 FEET; THENCE S00°21'19"E A DISTANCE OF 345.00 FEET; THENCE N89°38'41"E A DISTANCE OF 363.45 FEET; THENCE S01°26'50"W A DISTANCE OF 1224.93 FEET; THENCE WITH A CURVE TURNING TO THE RIGHT WITH AN ARC LENGTH OF 195.50 FEET, WITH A RADIUS OF 3450.00 FEET, WITH A CHORD BEARING OF N76°51'21"W, WITH A CHORD LENGTH OF 195.47 FEET; THENCE WITH A REVERSE CURVE TURNING TO THE LEFT WITH AN ARC LENGTH OF 439.73 FEET, WITH A RADIUS OF 501.55 FEET, WITH A CHORD BEARING OF S79°39'03"W, WITH A CHORD LENGTH OF 425.78 FEET; THENCE S54°32'02"W A DISTANCE OF 271.60 FEET; THENCE S38°10'33"W A DISTANCE OF 204.45 FEET; THENCE WITH A CURVE TURNING TO THE RIGHT WITH AN ARC LENGTH OF 84.88 FEET, WITH A RADIUS OF 755.00 FEET, WITH A CHORD BEARING OF N60°52'44"W, WITH A CHORD LENGTH OF 84.84 FEET; THENCE N57°39'29"W A DISTANCE OF 62.92 FEET; THENCE WITH A CURVE TURNING TO THE LEFT WITH AN ARC LENGTH OF 162.42 FEET, WITH A RADIUS OF 845.00 FEET, WITH A CHORD BEARING OF N63°09'52"W, WITH A CHORD LENGTH OF 162.17 FEET; THENCE WITH A REVERSE CURVE TURNING TO THE RIGHT WITH AN ARC LENGTH OF 141.87 FEET, WITH A RADIUS OF 396.89 FEET, WITH A CHORD BEARING OF N58°25'51"W, WITH A CHORD LENGTH OF 141.11 FEET; THENCE N48°11'23"W A DISTANCE OF 71.65 FEET; THENCE S41°48'37"W A DISTANCE OF 110.00 FEET; THENCE N48°11'27"W A DISTANCE OF 183.63 FEET TO A POINT AT THE INTERSECTION OF THE SOUTHERLY RIGHT OF WAY LINE OF LAKESHORE BOULEVARD EAST AND THE EASTERLY RIGHT OF WAY LINE OF LAKESHORE BOULEVARD SOUTH, THE POINT OF BEGINNING.

REPEAL: All ordinances or parts of ordinances in conflict herewith are hereby repealed.

SEVERABILITY: If any provision of this Ordinance shall be held to be invalid, such invalidity shall not affect any other provision herein which can be given effect without the invalid provision and to this end the provisions of this Ordinance are hereby declared to be severable.

EFFECTIVE DATE: This ordinance shall become effective fifteen (15) days after adoption.

MOVED FOR ADOPTION BY: _____ SECONDED BY: _____

WHEREUPON THIS ORDINANCE WAS SUBMITTED TO A VOTE AND RESULTED IN THE FOLLOWING:

YEAS:

NAYS:

ABSTAIN:

ABSENT:

THIS ORDINANCE WAS DECLARED DULY ADOPTED AT A REGULAR MEETING OF THE COUNCIL HELD ON THE 6TH DAY OF FEBRUARY, 2014, AND BECOMES ORDINANCE COUNCIL SERIES NO. 14-

R. REID FALCONER, AIA, COUNCIL CHAIRMAN

ATTEST:

THERESA L. FORD, COUNCIL CLERK

PATRICIA BRISTER, PARISH PRESIDENT

Published introduction: November 28, 2013
Published adoption on: _____, 2014
Delivered to Parish President: _____, 2014 @
Returned to Council Clerk: _____, 2014 @



G.E.C., Inc.
1580 W. Causeway App., Ste. 1
Mandeville, Louisiana 70471
(985) 624-5125 Fax (985) 951-8245
Verdi Adam, P.E., President
Stephen Spohrer, P.E., Chief Operating Officer



December 3, 2013

Mr. Robert L. Torres, Jr., President and
Board of Commissioners
St. Tammany Parish Drainage District No. 2
1301 East End Boulevard
Slidell, Louisiana 70461

RE: Proposed Ordinance Calendar No. 5109
New Drainage District Boundaries for
Drainage District No. 2

Gentlemen:

As requested, I have reviewed the proposed ordinance to amend the Drainage District No. 2 boundaries.

As District Engineer, I concur that the ordinance establishes new boundaries that include property that will be provided drainage by the existing drainage conveyance and pumping systems under the Administration of the St. Tammany Parish Drainage District No. 2.

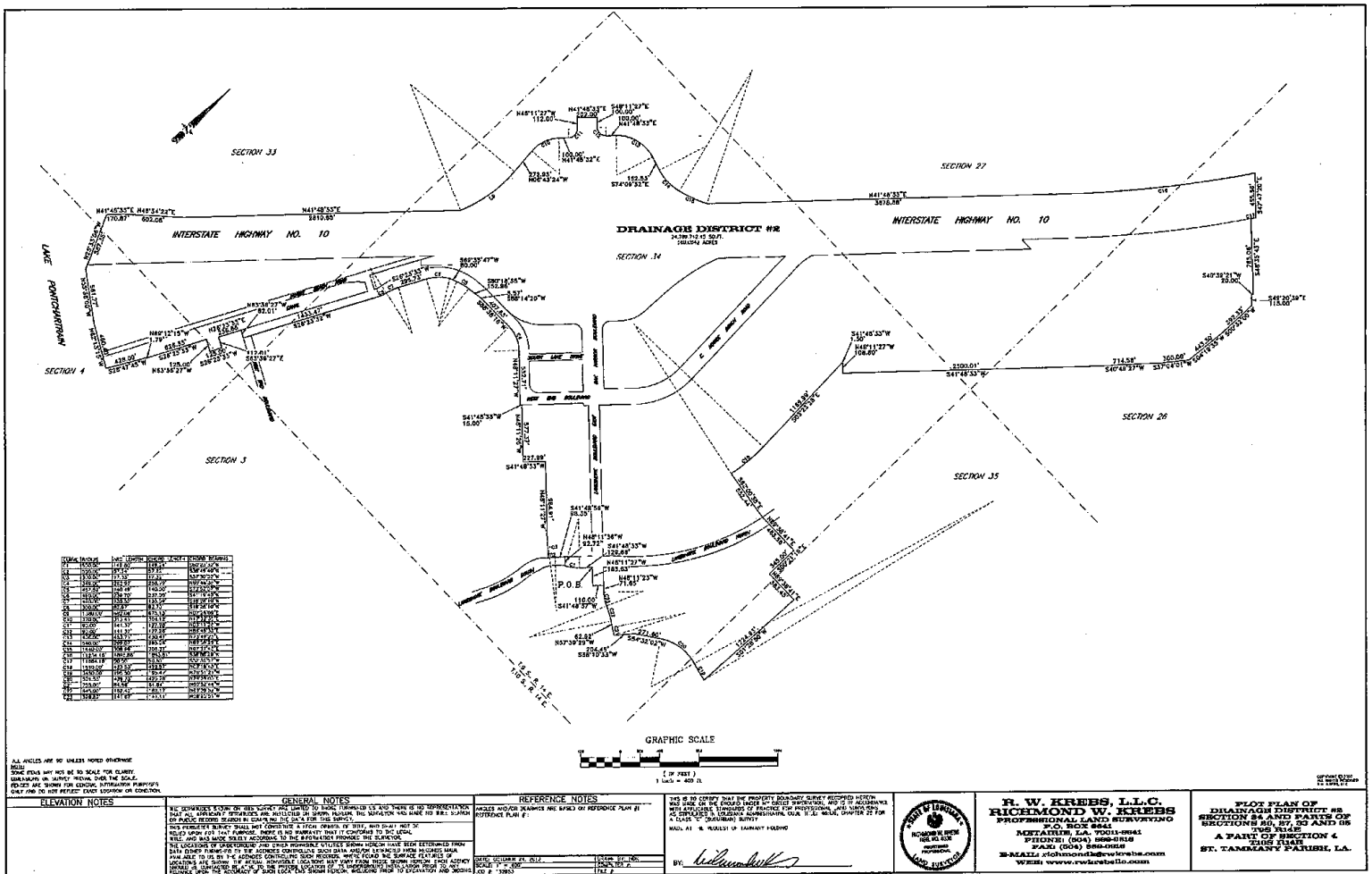
Yours truly,

Michael M. Hattaway, P.E.

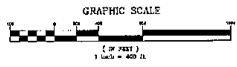
Celebrating **27th** Anniversary

Engineering • Economics • Energy • Environmental • GIS • Planning • Transportation • Surveying

EXHIBIT **3**



ALL ANGLES ARE BY UNLESS NOTED OTHERWISE
 BEARING ANGLES ARE BY UNLESS NOTED OTHERWISE
 DISTANCES ARE BY UNLESS NOTED OTHERWISE
 ALL DISTANCES ARE BY UNLESS NOTED OTHERWISE



<p>ELEVATION NOTES</p> <p>ALL ELEVATIONS ARE BY UNLESS NOTED OTHERWISE BEARING ANGLES ARE BY UNLESS NOTED OTHERWISE DISTANCES ARE BY UNLESS NOTED OTHERWISE ALL DISTANCES ARE BY UNLESS NOTED OTHERWISE</p>	<p>GENERAL NOTES</p> <p>NO WARRANTY IS MADE BY THIS SURVEYOR AS TO THE ACCURACY OF THE INFORMATION CONTAINED HEREIN OR THE RESULTS OF ANY ANALYSIS OR INTERPRETATION THEREOF. THE SURVEYOR'S LIABILITY IS LIMITED TO THE PERFORMANCE OF HIS PROFESSIONAL DUTY IN ACCORDANCE WITH THE STANDARDS OF THE PROFESSION. THE SURVEYOR'S LIABILITY IS LIMITED TO THE PERFORMANCE OF HIS PROFESSIONAL DUTY IN ACCORDANCE WITH THE STANDARDS OF THE PROFESSION. THE SURVEYOR'S LIABILITY IS LIMITED TO THE PERFORMANCE OF HIS PROFESSIONAL DUTY IN ACCORDANCE WITH THE STANDARDS OF THE PROFESSION.</p>	<p>REFERENCE NOTES</p> <p>ALL DISTANCES AND BEARINGS ARE BY UNLESS NOTED OTHERWISE ALL DISTANCES AND BEARINGS ARE BY UNLESS NOTED OTHERWISE ALL DISTANCES AND BEARINGS ARE BY UNLESS NOTED OTHERWISE</p>	<p>THIS IS A COPY OF THE PROPERTY BOUNDARY SURVEY RECEIVED HEREON AND IS NOT A COPY OF THE ORIGINAL SURVEY. THE SURVEYOR'S LIABILITY IS LIMITED TO THE PERFORMANCE OF HIS PROFESSIONAL DUTY IN ACCORDANCE WITH THE STANDARDS OF THE PROFESSION. THE SURVEYOR'S LIABILITY IS LIMITED TO THE PERFORMANCE OF HIS PROFESSIONAL DUTY IN ACCORDANCE WITH THE STANDARDS OF THE PROFESSION. THE SURVEYOR'S LIABILITY IS LIMITED TO THE PERFORMANCE OF HIS PROFESSIONAL DUTY IN ACCORDANCE WITH THE STANDARDS OF THE PROFESSION.</p>		<p>R. W. KREBS, L.L.C. RICHMOND W. KREBS PROFESSIONAL LAND SURVEYING P.O. BOX 8841 METairie, LA 70001-8841 PHONE (504) 885-8841 FAX (504) 885-8841 E-MAIL rkrebs@rkwk.com WEB www.rkwk.com</p>	<p>PLAT PLAN OF DRAINAGE DISTRICT #8 SECTION 3, 4 AND PARTS OF SECTIONS 5, 6, 7 AND 8 THE STATE A PART OF SECTION 4 THIS STATE ST. TAMMANY PARISH, LA.</p>
---	--	---	--	--	--	---