

ST. TAMMANY PARISH COUNCIL

ORDINANCE

ORDINANCE CALENDAR NO: 5109

ORDINANCE COUNCIL SERIES NO: _____

COUNCIL SPONSOR: MR. ARTIGUE

PROVIDED BY: COUNCIL ATTORNEY

INTRODUCED BY: MR. STEFANCIK

SECONDED BY: MR. ARTIGUE

ON THE 5 DAY OF DECEMBER , 2013

SEE ATTACHED FOR COMPLETE DOCUMENT. ORDINANCE TO AMEND ST. TAMMANY PARISH CODE OF ORDINANCES, CHAPTER 7 DRAINAGE AND FLOOD CONTROL, ARTICLE III DRAINAGE DISTRICT NO. 2, SEC. 7-061.00 REORGANIZATION, BOUNDARIES, TO AMEND AND REESTABLISH THE BOUNDARIES OF DRAINAGE DISTRICT NO. 2. (WARD 9 DISTRICT13)

WHEREAS, **SEE ATTACHED**

REPEAL: All ordinances or parts of Ordinances in conflict herewith are hereby repealed.

SEVERABILITY: If any provision of this Ordinance shall be held to be invalid, such invalidity shall not affect other provisions herein which can be given effect without the invalid provision and to this end the provisions of this Ordinance are hereby declared to be severable.

EFFECTIVE DATE: This Ordinance shall become effective fifteen (15) days after adoption.

MOVED FOR ADOPTION BY: _____ SECONDED BY: _____

WHEREUPON THIS ORDINANCE WAS SUBMITTED TO A VOTE AND RESULTED IN THE FOLLOWING:

YEAS: _____

NAYS: _____

ABSTAIN: _____

ABSENT: _____

THIS ORDINANCE WAS DECLARED DULY ADOPTED AT A REGULAR MEETING OF THE PARISH COUNCIL ON THE 9 DAY OF JANUARY , 2014 ; AND BECOMES ORDINANCE COUNCIL SERIES NO _____.

JERRY BINDER, COUNCIL CHAIRMAN

ATTEST:

THERESA L. FORD, COUNCIL CLERK

PATRICIA P. BRISTER, PARISH PRESIDENT

Published Introduction: November 28 , 2013

Published Adoption: _____, 2014

Delivered to Parish President: _____, 2014 at _____

Returned to Council Clerk: _____, 2014 at _____

ST. TAMMANY PARISH COUNCIL

ORDINANCE

ORDINANCE CALENDAR NO. 5109 ORDINANCE COUNCIL SERIES NO. _____

COUNCIL SPONSOR MR. ARTIGUE PROVIDED BY ASST. COUNCIL ATTORNEY

INTRODUCED BY: _____ SECONDED BY: _____

ON THE 5TH DAY OF DECEMBER, 2013

ORDINANCE TO AMEND ST. TAMMANY PARISH CODE OF ORDINANCES, CHAPTER 7 DRAINAGE AND FLOOD CONTROL, ARTICLE III DRAINAGE DISTRICT NO. 2, SEC. 7-061.00 REORGANIZATION, BOUNDARIES, TO AMEND AND REESTABLISH THE BOUNDARIES OF DRAINAGE DISTRICT NO. 2. (WARD 9, DISTRICT 13)

WHEREAS, St. Tammany Parish Drainage District No. 2 (“District”), was created by Ordinance of the Police Jury adopted November 10, 1925, and said District was reorganized by Ordinance Calendar No. 836, Police Jury Series No. 84-01, adopted January 19, 1984. Thereafter, the boundaries of Drainage District No. 2 were altered and diminished by Ordinance Calendar No. 1106, Police Jury Series No. 88-991, adopted September 15, 1988; and

WHEREAS, on August 18, 1994, the St. Tammany Parish Police Jury adopted Ordinance Calendar No. 2248, Police Jury Series No. 94-2057, altering and reorganizing the geographical boundaries of Drainage District No. 2 with that portion of land located on the east side of Interstate 10 remaining as St. Tammany Parish Drainage District No. 2 and that portion of land located on the western side of Interstate 10 being formed into a new Drainage District, St. Tammany Parish Drainage District No. 5, all as per plats of surveys prepared by J. J. Krebs & Sons, Inc., dated February 24, 1994, Job No. 945232, attached thereto as Exhibit “1”; and

WHEREAS, in accordance with La.R.S. 38:1614, the Board of Commissioners of St. Tammany Parish Drainage District No. 2 has adopted the attached Resolution with attachments (Exhibit 1, 6 Pages), concurring in the amendment of the boundaries of said district to diminish the district by removing therefrom that portion of property that is no longer receiving any drainage benefits from St. Tammany Parish Drainage District No. 2.; and

WHEREAS, in accordance with La.R.S. 38:1614, and as evidenced by the attached Resolution of the Board of Commissioners of St. Tammany Parish Drainage District No. 2, said District does not have any outstanding bonds or indebtedness; and

WHEREAS, in accordance with La.R.S. 38:1614, the Chief Engineer of St. Tammany Parish Drainage District No. 2 has concurred in the change of boundaries of the District as evidence by attached Exhibit 2.

THE PARISH OF ST. TAMMANY HEREBY ORDAINS that the St. Tammany Parish Code of Ordinances, Chapter 7, Drainage and Flood Control, Article III Drainage District No. 2, Section 7-061.00, Reorganization, Boundaries, is hereby amended to diminish and reestablish the boundaries of Drainage District No. 2, which reestablished boundaries shall be as depicted on the attached survey of R.W. Krebs, L.L.C., dated October 24, 2013, Job # 132963 (Exhibit 3), and as more particularly described as follows, to-wit:

DRAINAGE DISTRICT #2

A CERTAIN PIECE OR PORTION OF GROUND SITUATED IN THE STATE OF LOUISIANA, PARISH OF ST. TAMMANY, SECTION 34 AND A PORTION OF SECTIONS 26, 27, 33 AND 35, T9S-R14E AND A PORTION OF SECTIONS 4, T10S-R14E, DESIGNATED AS DRAINAGE DISTRICT #2 AND MORE FULLY DESCRIBED AS FOLLOWS:

BEGINNING AT THE INTERSECTION OF THE SOUTHERLY RIGHT OF WAY LINE OF LAKESHORE BOULEVARD EAST AND THE EASTERLY RIGHT OF WAY LINE OF LAKESHORE BOULEVARD SOUTH; MEASURE THENCE S41°48'33"W A DISTANCE OF 129.66 FEET; THENCE WITH A CURVE TURNING TO THE RIGHT WITH AN ARC LENGTH OF 149.80 FEET, WITH A RADIUS OF 500.00 FEET, WITH A CHORD BEARING OF S50°23'32"W, WITH A CHORD LENGTH OF 149.24 FEET; THENCE N48°11'36"W A DISTANCE OF 92.72 FEET; THENCE S41°48'56"W A DISTANCE OF 98.35 FEET; THENCE WITH A CURVE TURNING TO THE LEFT WITH AN ARC LENGTH OF 57.24 FEET, WITH A RADIUS OF 550.00 FEET, WITH A CHORD BEARING OF S38°49'40"W, WITH A CHORD LENGTH OF 57.22 FEET; THENCE WITH A REVERSE CURVE TURNING TO THE RIGHT WITH AN ARC LENGTH OF 17.33 FEET, WITH A RADIUS OF 300.00 FEET, WITH A CHORD BEARING OF S37°30'02"W, WITH A CHORD LENGTH OF 17.32 FEET; THENCE N48°11'27"W A DISTANCE OF 984.91 FEET; THENCE S41°48'33"W A DISTANCE OF 227.99 FEET; THENCE N48°11'26"W A DISTANCE OF 577.37 FEET; THENCE S41°48'33"W A DISTANCE OF 15.00 FEET; THENCE N48°11'27"W A DISTANCE OF 552.71 FEET; THENCE WITH A CURVE TURNING TO THE LEFT WITH AN ARC LENGTH OF 262.97 FEET, WITH A RADIUS OF 349.00 FEET, WITH A CHORD BEARING OF N69°46'35"W, WITH A CHORD LENGTH OF 256.79 FEET; THENCE S88°38'16"W A DISTANCE OF 407.63 FEET; THENCE S88°14'20"W A DISTANCE OF 5.57 FEET; THENCE S80°18'38"W A DISTANCE OF 152.96 FEET; THENCE WITH A CURVE TURNING TO THE LEFT WITH AN ARC LENGTH OF 140.49 FEET, WITH A RADIUS OF 487.52 FEET, WITH A CHORD BEARING OF S73°52'07"W, WITH A CHORD LENGTH OF 140.00 FEET; THENCE S69°35'47"W A DISTANCE OF 80.00 FEET; THENCE WITH A CURVE TURNING TO THE LEFT WITH AN ARC LENGTH OF 239.70 FEET, WITH A RADIUS OF 460.00 FEET, WITH A CHORD BEARING OF S41°19'45"W, WITH A CHORD LENGTH OF 237.00 FEET; THENCE S26°23'33"W A DISTANCE OF 295.73 FEET; THENCE WITH A CURVE TURNING TO THE LEFT WITH AN ARC LENGTH OF 135.52 FEET, WITH A RADIUS OF 490.00 FEET, WITH A CHORD BEARING OF S18°28'10"W, WITH A CHORD LENGTH OF 135.09 FEET; THENCE WITH A REVERSE CURVE TURNING TO THE RIGHT WITH AN ARC LENGTH OF 82.97 FEET, WITH A RADIUS OF 300.00 FEET, WITH A CHORD BEARING OF S18°28'10"W, WITH A CHORD LENGTH OF 82.70 FEET; THENCE S26°23'32"W A DISTANCE OF 1433.47 FEET; THENCE N63°36'27"W A DISTANCE OF 82.01 FEET; THENCE S26°23'33"W A DISTANCE OF 236.88 FEET; THENCE S63°36'27"E A DISTANCE OF 112.01 FEET; THENCE S26°23'33"W A DISTANCE OF 125.00 FEET; THENCE N63°36'27"W A DISTANCE OF 125.00 FEET; THENCE S26°23'33"W A DISTANCE OF 626.33 FEET; THENCE N69°12'15"W A DISTANCE OF 1.79 FEET; THENCE S28°47'45"W A DISTANCE OF 428.00 FEET; THENCE N62°13'15"W A DISTANCE OF 460.40 FEET; THENCE N55°36'00"W A DISTANCE OF 561.77 FEET; THENCE N25°33'06"W A DISTANCE OF 587.35 FEET; THENCE N41°48'35"E A DISTANCE OF 170.87 FEET; THENCE N46°34'22"E A DISTANCE OF 602.08 FEET; THENCE N41°48'33"E A DISTANCE OF 2810.65 FEET; THENCE WITH A CURVE TURNING TO THE LEFT WITH AN ARC LENGTH OF 682.06 FEET, WITH A RADIUS OF 1380.00 FEET, WITH A CHORD BEARING OF N07°26'09"E, WITH A CHORD LENGTH OF 675.13 FEET; THENCE N06°43'24"W A DISTANCE OF 272.93 FEET; THENCE WITH A CURVE TURNING TO THE RIGHT WITH AN ARC LENGTH OF 313.41 FEET, WITH A RADIUS OF 370.00 FEET, WITH A CHORD BEARING OF N17°32'35"E, WITH A CHORD LENGTH OF

304.12 FEET;

THENCE N41°48'32"E A DISTANCE OF 100.00 FEET; THENCE WITH A CURVE TURNING TO THE LEFT WITH AN ARC LENGTH OF 141.37 FEET, WITH A RADIUS OF 90.00 FEET, WITH A CHORD BEARING OF N03°11'28"W, WITH A CHORD LENGTH OF 127.28 FEET; THENCE N48°11'27"W A DISTANCE OF 112.00 FEET; THENCE N41°48'33"E A DISTANCE OF 202.00 FEET; THENCE S48°11'27"E A DISTANCE OF 100.00 FEET; THENCE WITH A CURVE TURNING TO THE LEFT WITH AN ARC LENGTH OF 141.37 FEET, WITH A RADIUS OF 90.00 FEET, WITH A CHORD BEARING OF N86°48'33"E, WITH A CHORD LENGTH OF 127.28 FEET; THENCE N41°48'33"E A DISTANCE OF 100.00 FEET; THENCE WITH A CURVE TURNING TO THE RIGHT WITH AN ARC LENGTH OF 453.71 FEET, WITH A RADIUS OF 406.00 FEET, WITH A CHORD BEARING OF N73°49'25"E, WITH A CHORD LENGTH OF 430.47 FEET; THENCE S74°09'32"E A DISTANCE OF 152.53 FEET; THENCE WITH A CURVE TURNING TO THE LEFT WITH AN ARC LENGTH OF 299.07 FEET, WITH A RADIUS OF 540.00 FEET, WITH A CHORD BEARING OF N89°58'30"E, WITH A CHORD LENGTH OF 295.26 FEET; THENCE WITH A COMPOUND CURVE TURNING TO THE LEFT WITH AN ARC LENGTH OF 308.96 FEET, WITH A RADIUS OF 1440.00 FEET, WITH A CHORD BEARING OF N67°57'43"E, WITH A CHORD LENGTH OF 308.37 FEET; THENCE N41°48'33"E A DISTANCE OF 3678.88 FEET; THENCE WITH A CURVE TURNING TO THE LEFT WITH AN ARC LENGTH OF 1895.86 FEET, WITH A RADIUS OF 11234.16 FEET, WITH A CHORD BEARING OF N36°58'29"E, WITH A CHORD LENGTH OF 1893.61 FEET; THENCE S47°47'20"E A DISTANCE OF 455.56 FEET; THENCE WITH A CURVE TURNING TO THE RIGHT WITH AN ARC LENGTH OF 50.50 FEET, WITH A RADIUS OF 11684.16 FEET, WITH A CHORD BEARING OF S32°36'57"W, WITH A CHORD LENGTH OF 50.50 FEET; THENCE S48°35'43"E A DISTANCE OF 765.06 FEET; THENCE S40°39'21"W A DISTANCE OF 20.00 FEET; THENCE S49°20'39"E A DISTANCE OF 115.00 FEET; THENCE S00°32'00"W A DISTANCE OF 392.33 FEET; THENCE S04°19'35"W A DISTANCE OF 443.30 FEET; THENCE S37°04'01"W A DISTANCE OF 300.00 FEET; THENCE S40°49'27"W A DISTANCE OF 714.56 FEET; THENCE S41°48'33"W A DISTANCE OF 2500.01 FEET; THENCE N48°11'27"W A DISTANCE OF 108.80 FEET; THENCE S03°23'28"E A DISTANCE OF 1169.99 FEET; THENCE WITH A CURVE TURNING TO THE RIGHT WITH AN ARC LENGTH OF 423.53 FEET, WITH A RADIUS OF 1810.00 FEET, WITH A CHORD BEARING OF S03°18'45"W, WITH A CHORD LENGTH OF 422.57 FEET; THENCE S82°00'38"E A DISTANCE OF 552.44 FEET; THENCE N89°38'41"E A DISTANCE OF 463.56 FEET; THENCE S00°21'19"E A DISTANCE OF 345.00 FEET; THENCE N89°38'41"E A DISTANCE OF 363.45 FEET; THENCE S01°26'50"W A DISTANCE OF 1224.93 FEET; THENCE WITH A CURVE TURNING TO THE RIGHT WITH AN ARC LENGTH OF 195.50 FEET, WITH A RADIUS OF 3450.00 FEET, WITH A CHORD BEARING OF N76°51'21"W, WITH A CHORD LENGTH OF 195.47 FEET; THENCE WITH A REVERSE CURVE TURNING TO THE LEFT WITH AN ARC LENGTH OF 439.73 FEET, WITH A RADIUS OF 501.55 FEET, WITH A CHORD BEARING OF S79°39'03"W, WITH A CHORD LENGTH OF 425.78 FEET; THENCE S54°32'02"W A DISTANCE OF 271.60 FEET; THENCE S38°10'33"W A DISTANCE OF 204.45 FEET; THENCE WITH A CURVE TURNING TO THE RIGHT WITH AN ARC LENGTH OF 84.88 FEET, WITH A RADIUS OF 755.00 FEET, WITH A CHORD BEARING OF N60°52'44"W, WITH A CHORD LENGTH OF 84.84 FEET; THENCE N57°39'29"W A DISTANCE OF 62.92 FEET; THENCE WITH A CURVE TURNING TO THE LEFT WITH AN ARC LENGTH OF 162.42 FEET, WITH A RADIUS OF 845.00 FEET, WITH A CHORD BEARING OF N63°09'52"W, WITH A CHORD LENGTH OF 162.17 FEET; THENCE WITH A REVERSE CURVE TURNING TO THE RIGHT WITH AN ARC LENGTH OF 141.87 FEET, WITH A RADIUS OF 396.89 FEET, WITH A CHORD BEARING OF N58°25'51"W, WITH A CHORD LENGTH OF 141.11 FEET; THENCE N48°11'23"W A DISTANCE OF 71.65 FEET; THENCE S41°48'37"W A DISTANCE OF 110.00 FEET; THENCE N48°11'27"W A DISTANCE OF 183.63 FEET TO A POINT AT THE INTERSECTION OF THE SOUTHERLY RIGHT OF WAY LINE OF LAKESHORE BOULEVARD EAST AND THE EASTERLY RIGHT OF WAY LINE OF LAKESHORE BOULEVARD SOUTH, THE POINT OF BEGINNING.

SEVERABILITY: If any provision of this Ordinance shall be held to be invalid, such invalidity shall not affect any other provision herein which can be given effect without the invalid provision and to this end the provisions of this Ordinance are hereby declared to be severable.

EFFECTIVE DATE: This ordinance shall become effective fifteen (15) days after adoption.

MOVED FOR ADOPTION BY: _____ SECONDED BY: _____

WHEREUPON THIS ORDINANCE WAS SUBMITTED TO A VOTE AND RESULTED IN THE FOLLOWING:

YEAS:

NAYS:

ABSTAIN:

ABSENT:

THIS ORDINANCE WAS DECLARED DULY ADOPTED AT A REGULAR MEETING OF THE COUNCIL HELD ON THE 9TH DAY OF JANUARY, 2014, AND BECOMES ORDINANCE COUNCIL SERIES NO. 14-

JERRY BINDER, COUNCIL CHAIRMAN

ATTEST:

THERESA L. FORD, COUNCIL CLERK

PATRICIA BRISTER, PARISH PRESIDENT

Published introduction: November 28, 2013
Published adoption on: _____, 2014
Delivered to Parish President: _____, 2014 @
Returned to Council Clerk: _____, 2014 @

EXHIBIT 1

RESOLUTION
BOARD OF COMMISSIONERS OF ST. TAMMANY PARISH
DRAINAGE DISTRICT No. 2
RESOLUTION NO. 2013-01
ADOPTED NOVEMBER 19, 2013

WHEREAS, Section 7-06100 of the St. Tammany Parish Code of Ordinances as amended in 1994 established the boundaries of St. Tammany Parish Drainage District No. 2;

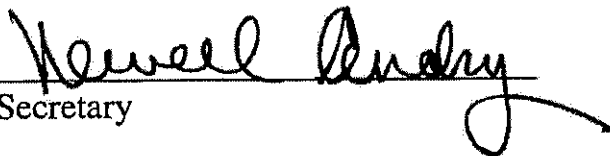
WHEREAS, the boundaries of St. Tammany Parish Drainage District No. 2 now include property that since 1994 has been dredged and filled and no longer requires any services for drainage; and

WHEREAS, the owners of property no longer being served by St. Tammany Parish Drainage District No. 2 will be subjected to assessments for which their property receives no drainage benefit,

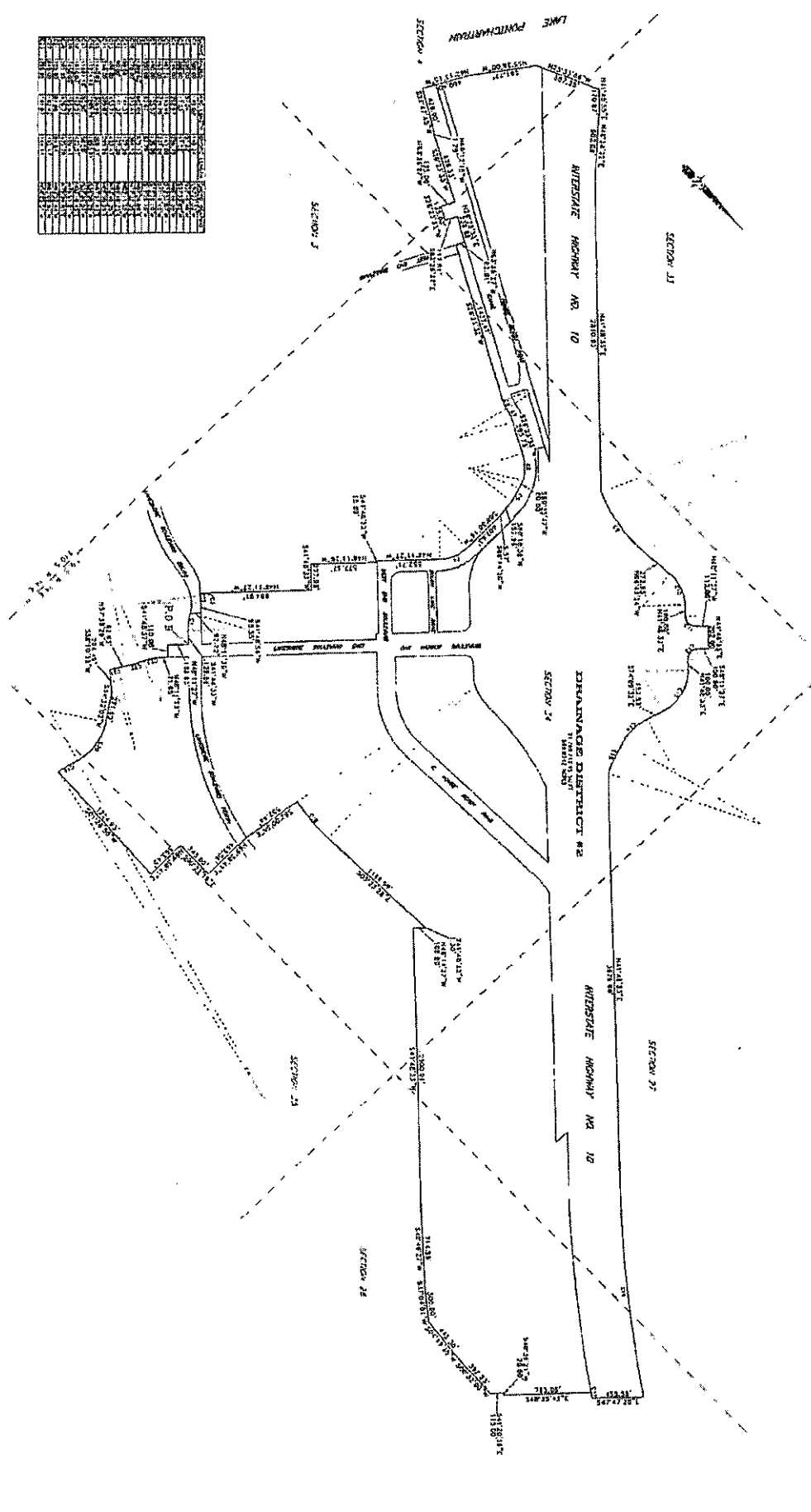
IT IS HEREBY RESOLVED that the Board of Commissioners of St. Tammany Parish Drainage District No. 2 urge and request that the St. Tammany Parish Council prepare, introduce and adopt an Ordinance changing the boundaries of St. Tammany Drainage District No. 2 and the Parish President sign the Ordinance to exclude property no longer receiving drainage benefits and enact the boundaries as shown on Exhibit attached hereto and made a part hereof.

CERTIFICATE OF SECRETARY

The foregoing Resolution was adopted by the Board of Commissioners of St. Tammany Parish Drainage District No. 2 on November 19, 2013 and remains in force and effect.


Secretary

NO.	DESCRIPTION	QUANTITY	UNIT
1
2
3
4
5
6
7
8
9
10
11
12
13
14
15
16
17
18
19
20
21
22
23
24
25
26
27
28
29
30
31
32
33
34
35
36
37
38
39
40
41
42
43
44
45
46
47
48
49
50
51
52
53
54
55
56
57
58
59
60
61
62
63
64
65
66
67
68
69
70
71
72
73
74
75
76
77
78
79
80
81
82
83
84
85
86
87
88
89
90
91
92
93
94
95
96
97
98
99
100



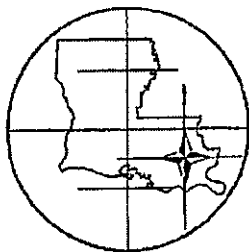
THIS SET OF PLANS AND SPECIFICATIONS IS TO BE USED FOR THE CONSTRUCTION OF THE DRAINAGE DISTRICT #2, AND IS TO BE KEPT ON FILE IN THE OFFICE OF THE ENGINEER IN CHARGE OF THE DISTRICT.

SECTION 24-28
 DRAINAGE DISTRICT #2
 SECTION 24-28
 A PART OF SECTION 4
 TOWNSHIP 14 NORTH
 RANGE 11 EAST
 COUNTY OF TARRANT, TEXAS

ENGINEER
 R. W. KERBS, L.L.C.
 PROFESSIONAL ENGINEERS AND ARCHITECTS
 1000 NORTH GARDNER STREET
 SUITE 100
 FORT WORTH, TEXAS 76102
 PHONE: 817-734-1100
 FAX: 817-734-1101
 WWW: WWW.RWKERBS.COM

FOR PLAN OF
 DRAINAGE DISTRICT #2
 SECTION 24-28
 A PART OF SECTION 4
 TOWNSHIP 14 NORTH
 RANGE 11 EAST
 COUNTY OF TARRANT, TEXAS

DATE: 11/11/03
 SHEET NO. 1 OF 1



KREBS

R.W. Krebs, LLC

Professional Land Surveying

P.O. Box 8641 • Metairie, Louisiana 70011-8641

local: (504)889-9616 fax: (504) 889-0916 toll free:

(877)837-9014

Latitude: 30°01'05.01"N
Longitude: 090°11'20.32"W

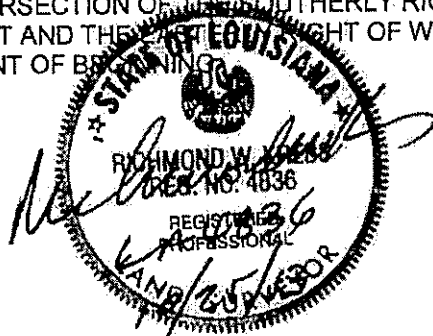
email: richmondk@krebssurvey.com

DRAINAGE DISTRICT #2

A CERTAIN PIECE OR PORTION OF GROUND SITUATED IN THE STATE OF LOUISIANA, PARISH OF ST. TAMMANY, SECTION 34 AND A PORTION OF SECTIONS 26, 27, 33 AND 35, T9S-R14E AND A PORTION OF SECTIONS 4, T10S-R14E, DESIGNATED AS DRAINAGE DISTRICT #2 AND MORE FULLY DESCRIBED AS FOLLOWS:

BEGINNING AT THE INTERSECTION OF THE SOUTHERLY RIGHT OF WAY LINE OF LAKESHORE BOULEVARD EASET AND THE EASTERLY RIGHT OF WAY LINE OF LAKESHORE BOULEVARD SOUTH; MEASURE THENCE S41°48'33"W A DISTANCE OF 129.66 FEET; THENCE WITH A CURVE TURNING TO THE RIGHT WITH AN ARC LENGTH OF 149.80 FEET, WITH A RADIUS OF 500.00 FEET, WITH A CHORD BEARING OF S50°23'32"W, WITH A CHORD LENGTH OF 149.24 FEET; THENCE N48°11'36"W A DISTANCE OF 92.72 FEET; THENCE S41°48'56"W A DISTANCE OF 98.35 FEET; THENCE WITH A CURVE TURNING TO THE LEFT WITH AN ARC LENGTH OF 57.24 FEET, WITH A RADIUS OF 550.00 FEET, WITH A CHORD BEARING OF S38°49'40"W, WITH A CHORD LENGTH OF 57.22 FEET; THENCE WITH A REVERSE CURVE TURNING TO THE RIGHT WITH AN ARC LENGTH OF 17.33 FEET, WITH A RADIUS OF 300.00 FEET, WITH A CHORD BEARING OF S37°30'02"W, WITH A CHORD LENGTH OF 17.32 FEET; THENCE N48°11'27"W A DISTANCE OF 984.91 FEET; THENCE S41°48'33"W A DISTANCE OF 227.99 FEET; THENCE N48°11'26"W A DISTANCE OF 577.37 FEET; THENCE S41°48'33"W A DISTANCE OF 15.00 FEET; THENCE N48°11'27"W A DISTANCE OF 552.71 FEET; THENCE WITH A CURVE TURNING TO THE LEFT WITH AN ARC LENGTH OF 262.97 FEET, WITH A RADIUS OF 349.00 FEET, WITH A CHORD BEARING OF N69°46'35"W, WITH A CHORD LENGTH OF 256.79 FEET; THENCE S88°38'16"W A DISTANCE OF 407.63 FEET; THENCE S88°14'20"W A DISTANCE OF 5.57 FEET; THENCE S80°18'38"W A DISTANCE OF 152.96 FEET; THENCE WITH A CURVE TURNING TO THE LEFT WITH AN ARC LENGTH OF 140.49 FEET, WITH A RADIUS OF 487.52 FEET, WITH A CHORD BEARING OF S73°52'07"W, WITH A CHORD LENGTH OF 140.00 FEET; THENCE S69°35'47"W A DISTANCE OF 80.00 FEET; THENCE WITH A CURVE TURNING TO THE LEFT WITH AN ARC LENGTH OF 239.70 FEET, WITH A RADIUS OF 460.00 FEET, WITH A CHORD BEARING OF S41°19'45"W, WITH A CHORD LENGTH OF 237.00 FEET; THENCE S26°23'33"W A DISTANCE OF 295.73 FEET; THENCE WITH A CURVE TURNING TO THE LEFT WITH AN ARC LENGTH OF 135.52 FEET, WITH A RADIUS OF 490.00 FEET, WITH A CHORD BEARING OF S18°28'10"W, WITH A CHORD LENGTH OF 135.09 FEET; THENCE WITH A REVERSE CURVE TURNING TO THE RIGHT WITH AN ARC LENGTH OF 82.97 FEET, WITH A RADIUS OF 300.00 FEET, WITH A CHORD BEARING OF S18°28'10"W, WITH A CHORD LENGTH OF 82.70 FEET; THENCE S26°23'32"W A DISTANCE OF 1433.47 FEET; THENCE N63°36'27"W A DISTANCE OF 82.01 FEET; THENCE S26°23'33"W A DISTANCE OF 236.88 FEET; THENCE S63°36'27"E A DISTANCE OF 112.01 FEET; THENCE S26°23'33"W A DISTANCE OF 125.00 FEET; THENCE N63°36'27"W A DISTANCE OF 125.00 FEET; THENCE S26°23'33"W A DISTANCE OF 626.33 FEET; THENCE N69°12'15"W A DISTANCE OF 1.79 FEET; THENCE S28°47'45"W A DISTANCE OF 428.00 FEET; THENCE N62°13'15"W A DISTANCE OF 460.40 FEET; THENCE N55°36'00"W A DISTANCE OF 561.77 FEET; THENCE N25°33'06"W A DISTANCE OF 587.35 FEET; THENCE N41°48'35"E A DISTANCE OF 170.87 FEET; THENCE N46°34'22"E A DISTANCE OF 602.08 FEET;

THENCE N41°48'33"E A DISTANCE OF 2810.65 FEET; THENCE WITH A CURVE TURNING TO THE LEFT WITH AN ARC LENGTH OF 682.06 FEET, WITH A RADIUS OF 1380.00 FEET, WITH A CHORD BEARING OF N07°26'09"E, WITH A CHORD LENGTH OF 675.13 FEET; THENCE N06°43'24"W A DISTANCE OF 272.93 FEET; THENCE WITH A CURVE TURNING TO THE RIGHT WITH AN ARC LENGTH OF 313.41 FEET, WITH A RADIUS OF 370.00 FEET, WITH A CHORD BEARING OF N17°32'35"E, WITH A CHORD LENGTH OF 304.12 FEET; THENCE N41°48'32"E A DISTANCE OF 100.00 FEET; THENCE WITH A CURVE TURNING TO THE LEFT WITH AN ARC LENGTH OF 141.37 FEET, WITH A RADIUS OF 90.00 FEET, WITH A CHORD BEARING OF N03°11'28"W, WITH A CHORD LENGTH OF 127.28 FEET; THENCE N48°11'27"W A DISTANCE OF 112.00 FEET; THENCE N41°48'33"E A DISTANCE OF 202.00 FEET; THENCE S48°11'27"E A DISTANCE OF 100.00 FEET; THENCE WITH A CURVE TURNING TO THE LEFT WITH AN ARC LENGTH OF 141.37 FEET, WITH A RADIUS OF 90.00 FEET, WITH A CHORD BEARING OF N86°48'33"E, WITH A CHORD LENGTH OF 127.28 FEET; THENCE N41°48'33"E A DISTANCE OF 100.00 FEET; THENCE WITH A CURVE TURNING TO THE RIGHT WITH AN ARC LENGTH OF 453.71 FEET, WITH A RADIUS OF 406.00 FEET, WITH A CHORD BEARING OF N73°49'25"E, WITH A CHORD LENGTH OF 430.47 FEET; THENCE S74°09'32"E A DISTANCE OF 152.53 FEET; THENCE WITH A CURVE TURNING TO THE LEFT WITH AN ARC LENGTH OF 299.07 FEET, WITH A RADIUS OF 540.00 FEET, WITH A CHORD BEARING OF N89°58'30"E, WITH A CHORD LENGTH OF 295.26 FEET; THENCE WITH A COMPOUND CURVE TURNING TO THE LEFT WITH AN ARC LENGTH OF 308.96 FEET, WITH A RADIUS OF 1440.00 FEET, WITH A CHORD BEARING OF N67°57'43"E, WITH A CHORD LENGTH OF 308.37 FEET; THENCE N41°48'33"E A DISTANCE OF 3678.88 FEET; THENCE WITH A CURVE TURNING TO THE LEFT WITH AN ARC LENGTH OF 1895.86 FEET, WITH A RADIUS OF 11234.16 FEET, WITH A CHORD BEARING OF N36°58'29"E, WITH A CHORD LENGTH OF 1893.61 FEET; THENCE S47°47'20"E A DISTANCE OF 455.56 FEET; THENCE WITH A CURVE TURNING TO THE RIGHT WITH AN ARC LENGTH OF 50.50 FEET, WITH A RADIUS OF 11684.16 FEET, WITH A CHORD BEARING OF S32°36'57"W, WITH A CHORD LENGTH OF 50.50 FEET; THENCE S48°35'43"E A DISTANCE OF 765.06 FEET; THENCE S40°39'21"W A DISTANCE OF 20.00 FEET; THENCE S49°20'39"E A DISTANCE OF 115.00 FEET; THENCE S00°32'00"W A DISTANCE OF 392.33 FEET; THENCE S04°19'35"W A DISTANCE OF 443.30 FEET; THENCE S37°04'01"W A DISTANCE OF 300.00 FEET; THENCE S40°49'27"W A DISTANCE OF 714.56 FEET; THENCE S41°48'33"W A DISTANCE OF 2500.01 FEET; THENCE N48°11'27"W A DISTANCE OF 108.80 FEET; THENCE S03°23'28"E A DISTANCE OF 1169.99 FEET; THENCE WITH A CURVE TURNING TO THE RIGHT WITH AN ARC LENGTH OF 423.53 FEET, WITH A RADIUS OF 1810.00 FEET, WITH A CHORD BEARING OF S03°18'45"W, WITH A CHORD LENGTH OF 422.57 FEET; THENCE S82°00'38"E A DISTANCE OF 552.44 FEET; THENCE N89°38'41"E A DISTANCE OF 463.56 FEET; THENCE S00°21'19"E A DISTANCE OF 345.00 FEET; THENCE N89°38'41"E A DISTANCE OF 363.45 FEET; THENCE S01°26'50"W A DISTANCE OF 1224.93 FEET; THENCE WITH A CURVE TURNING TO THE RIGHT WITH AN ARC LENGTH OF 195.50 FEET, WITH A RADIUS OF 3450.00 FEET, WITH A CHORD BEARING OF N76°51'21"W, WITH A CHORD LENGTH OF 195.47 FEET; THENCE WITH A REVERSE CURVE TURNING TO THE LEFT WITH AN ARC LENGTH OF 439.73 FEET, WITH A RADIUS OF 501.56 FEET, WITH A CHORD BEARING OF S79°39'03"W, WITH A CHORD LENGTH OF 425.78 FEET; THENCE S54°32'02"W A DISTANCE OF 271.60 FEET; THENCE S38°10'33"W A DISTANCE OF 204.45 FEET; THENCE WITH A CURVE TURNING TO THE RIGHT WITH AN ARC LENGTH OF 84.88 FEET, WITH A RADIUS OF 755.00 FEET, WITH A CHORD BEARING OF N60°52'44"W, WITH A CHORD LENGTH OF 84.84 FEET; THENCE N57°39'29"W A DISTANCE OF 62.92 FEET; THENCE WITH A CURVE TURNING TO THE LEFT WITH AN ARC LENGTH OF 162.42 FEET, WITH A RADIUS OF 845.00 FEET, WITH A CHORD BEARING OF N63°09'52"W, WITH A CHORD LENGTH OF 162.17 FEET; THENCE WITH A REVERSE CURVE TURNING TO THE RIGHT WITH AN ARC LENGTH OF 141.87 FEET, WITH A RADIUS OF 396.89 FEET, WITH A CHORD BEARING OF N58°25'51"W, WITH A CHORD LENGTH OF 141.11 FEET; THENCE N48°11'23"W A DISTANCE OF 71.65 FEET; THENCE S41°48'37"W A DISTANCE OF 110.00 FEET; THENCE N48°11'27"W A DISTANCE OF 183.63 FEET TO A POINT AT THE INTERSECTION OF THE SOUTHERLY RIGHT OF WAY LINE OF LAKESHORE BOULEVARD EAST AND THE SOUTHERLY RIGHT OF WAY LINE OF LAKESHORE BOULEVARD SOUTH, THE POINT OF BEGINNING.



MINUTES OF SPECIAL MEETING

St. Tammany Parish Drainage District No. 2
1301 East End Boulevard
Slidell, Louisiana
Tuesday, November 19, 2013
6:00 PM

CALL TO ORDER BY PRESIDENT at 6:10 PM

ROLL CALL: Present:
Robert L. Torres, Jr.
Newell Andry
Ricky Martin
Tim Sykes

Absent:
Leander Nunez

OLD BUSINESS: (NONE)

NEW BUSINESS:

1. Mr. Sykes moved and Mr. Martin seconded a motion to adopt the attached Resolution with respect to the adoption of an Ordinance to change the boundaries of St. Tammany Drainage District No. 2.

VOTE: 4 yeas and 0 nays

The motion passed unanimously.

OTHER NEW BUSINESS:

None

ADJOURN

Mr. Sykes moved and Mr. Martin seconded a motion to adjourn. There were no objections. The meeting was adjourned at 6:23 PM

SIGNED: _____

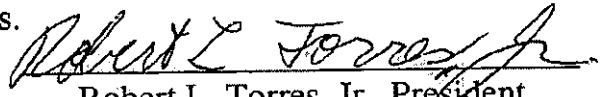

NEWELL ANDRY - Secretary

NOTICE OF SPECIAL MEETING

NOTICE IS HEREBY GIVEN that a special meeting of the St. Tammany Parish Drainage District No. 2 has been called and will be held at 1301 East End Boulevard, Slidell, Louisiana, on Tuesday, November 19, 2013 at 6:00 PM for the following purposes, to-wit:

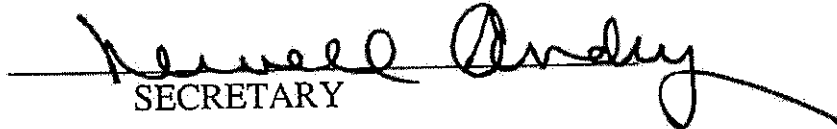
1. To consider and take action with respect to the adoption of an Ordinance to change the boundaries of St. Tammany Drainage District No. 2.
2. To consider and transact any and all other business that may be properly brought before the Board of Directors.

Date: November 18, 2013


Robert L. Torres, Jr. President

CERTIFICATION POSTING OF NOTICE

I, the undersigned Secretary of St. Tammany Drainage District No. 2 do hereby certify that the above Notice was posted at the meeting place and also at the prior office of St. Tammany Drainage District No. 2 on November 18, 2013.


SECRETARY



G.E.C., Inc.
1580 W. Causeway App., Ste. 1
Mandeville, Louisiana 70471
(985) 624-5125 Fax (985) 951-8245
Verdi Adam, P.E., President
Stephen Spohrer, P.E., Chief Operating Officer



December 3, 2013

Mr. Robert L. Torres, Jr., President and
Board of Commissioners
St. Tammany Parish Drainage District No. 2
1301 East End Boulevard
Slidell, Louisiana 70461

RE: Proposed Ordinance Calendar No. 5109
New Drainage District Boundaries for
Drainage District No. 2

Gentlemen:

As requested, I have reviewed the proposed ordinance to amend the Drainage District No. 2 boundaries.

As District Engineer, I concur that the ordinance establishes new boundaries that include property that will be provided drainage by the existing drainage conveyance and pumping systems under the Administration of the St. Tammany Parish Drainage District No. 2.

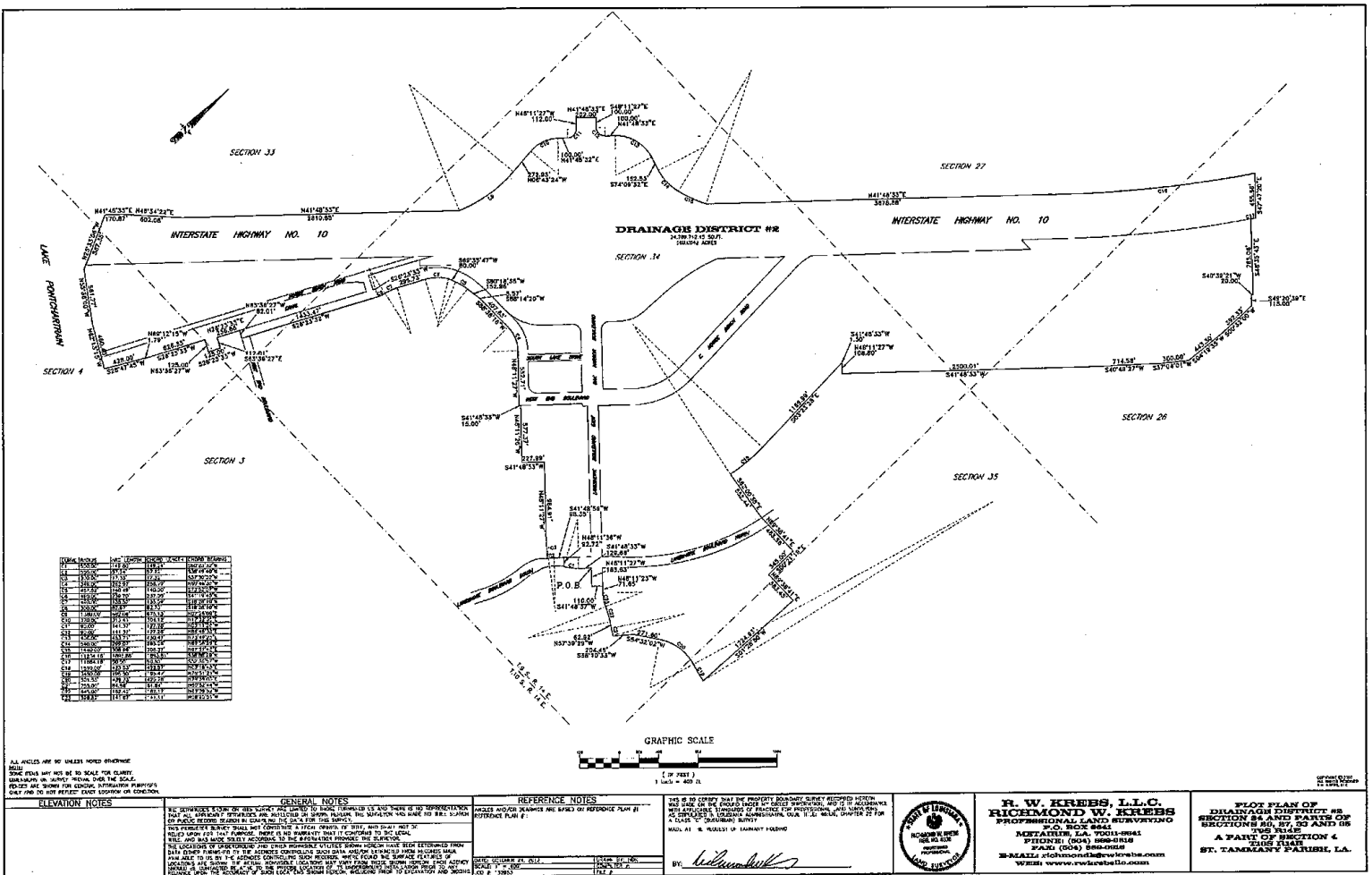
Yours truly,

Michael M. Hattaway, P.E.

Celebrating **27th** Anniversary

Engineering • Economics • Energy • Environmental • GIS • Planning • Transportation • Surveying

EXHIBIT 3



F. W. KREBS, L.L.C.
RICHMOND W. KREBS
 PROFESSIONAL LAND SURVEYING
 P.O. BOX 8841
 METairie, LA 70001-8841
 PHONE (504) 885-8818
 FAX (504) 885-8818
 E-MAIL: rkrebs@fwbk.com
 WEB: www.fwbk.com

PLAT PLAN OF
DRAINAGE DISTRICT #8
SECTION 8 AND PARTS OF
SECTIONS 3, 4, 5 AND 6
THE STATE
OF LOUISIANA
A PART OF SECTION 4
THE STATE
OF LOUISIANA
ST. TAMMANY PARISH, LA.

THIS IS TO CERTIFY THAT THE PROPERTY BOUNDARY SURVEY DESCRIBED HEREON WAS MADE BY ME OR UNDER MY CLOSE PERSONAL SUPERVISION, AND IN ACCORDANCE WITH THE PROVISIONS OF THE PROFESSIONAL LAND SURVEYING ACT, TITLE 48, CHAPTER 22 OF THE LAWS OF LOUISIANA, AND I AM A LICENSED SURVEYOR IN THE STATE OF LOUISIANA.
 MADE AT NEW ORLEANS, LOUISIANA, THIS 12th DAY OF FEBRUARY, 2009.
 BY: *Richmond W. Krebs*

REFERENCE NOTES
 ALL DISTANCES AND BEARINGS ARE GIVEN AS SHOWN ON THE PLAT PLAN.
 ALL DISTANCES ARE GIVEN IN FEET AND DECIMALS THEREOF.
 ALL BEARINGS ARE GIVEN IN DEGREES, MINUTES AND SECONDS.
 ALL DISTANCES ARE GIVEN TO THE CENTERS OF THE LINES.
 ALL BEARINGS ARE GIVEN TO THE CENTERS OF THE LINES.
 ALL DISTANCES ARE GIVEN TO THE CENTERS OF THE LINES.
 ALL BEARINGS ARE GIVEN TO THE CENTERS OF THE LINES.

GENERAL NOTES
 THE SURVEYOR'S DUTY IS TO ACCURATELY DETERMINE THE BOUNDARIES OF THE PROPERTY DESCRIBED HEREON AND TO REPORT THE RESULTS THEREOF TO THE CLIENT. THE SURVEYOR IS NOT RESPONSIBLE FOR THE ACCURACY OF THE DATA PROVIDED BY THE CLIENT OR FOR THE ACCURACY OF THE DATA PROVIDED BY ANY OTHER SOURCE. THE SURVEYOR IS NOT RESPONSIBLE FOR THE ACCURACY OF THE DATA PROVIDED BY ANY OTHER SOURCE. THE SURVEYOR IS NOT RESPONSIBLE FOR THE ACCURACY OF THE DATA PROVIDED BY ANY OTHER SOURCE.

ELEVATION NOTES
 ALL ELEVATIONS ARE IN FEET UNLESS NOTED OTHERWISE.
 ELEVATIONS ARE GIVEN TO THE CENTER OF THE LINES.
 ELEVATIONS ARE GIVEN TO THE CENTER OF THE LINES.
 ELEVATIONS ARE GIVEN TO THE CENTER OF THE LINES.
 ELEVATIONS ARE GIVEN TO THE CENTER OF THE LINES.