

ST. TAMMANY PARISH COUNCIL

RESOLUTION

RESOLUTION COUNCIL SERIES NO: C-3910

COUNCIL SPONSOR: BINDER/BRISTER

PROVIDED BY: DEVELOPMENT

RESOLUTION STATING ST. TAMMANY PARISH GOVERNMENT'S INTEREST IN PARTICIPATION IN THE LOUISIANA ENTERPRISE ZONE PROGRAM AND DESIGNATION OF THE ENTERPRISE ZONES AND OTHERWISE PROVIDING WITH RESPECT THERETO.

WHEREAS, the Louisiana Enterprise Zone Act of 1981, Act 901 was enacted by the Louisiana State Legislature, and Act 337 was enacted by the 1982 Legislature, Act 433 was enacted by the 1987 Legislature, Act 581 was enacted by the 1995 Legislature, Act 647 was enacted in 1997, and Act 977 was enacted in 1999; and Act 141 was enacted in 2013, and

WHEREAS, St. Tammany Parish has long recognized the benefits of participation in the Louisiana Enterprise Zone Program, and

WHEREAS, the Louisiana Enterprise Zone Program offers significant incentives for economic development to some of the most distressed areas in the Parish of St. Tammany, and

WHEREAS the Enterprise Zone program is a jobs incentive program that provides Louisiana income and franchise tax credits to a new or existing business located in Louisiana creating permanent net new full-time jobs, and hiring at least 35% of those net new jobs from one of four targeted groups, and

WHEREAS the Enterprise Zone program is open to any Louisiana business (new or existing) not engaged in on-site gaming, video poker or residential development, and not a church, and

WHEREAS, Enterprise Zones are economically distressed areas within the state that have high unemployment rates, low per capita income and/or a high number of residents receiving public assistance, and

WHEREAS, as a result of the 2010 United States Census, the number of eligible block groups has increased from nine (9) block groups to seventeen (17) block groups, and

WHEREAS, Louisiana Enterprise Zone Act Louisiana R.S. 51:1781-1791 designates the following 2010 census tract and block groups as eligible for Louisiana Enterprise Zone status; and

Census Tract	Block Group
401.02	1
401.02	4
401.02.....	5
405.01.....	2
406.04.....	1
407.01.....	2
407.04.....	3
407.06.....	5
407.10.....	3
408.01.....	2
409	2
409.....	3
411.03	1
411.03.....	2
411.04	2

412.022
412.043

WHEREAS, in accordance with the Louisiana Enterprise Zone Program requirements, the St. Tammany Parish Government agrees:

1. To participate in the Enterprise Zone Program.
2. To assist the Department in evaluating progress made in any Enterprise Zone Program.

THE ST. TAMMANY PARISH HEREBY RESOLVES that: In due regular and legal session convened on January 2nd, 2014 it will participate in the Louisiana Enterprise Zone Program.

BE IT FURTHER RESOLVED if any provision or item of this resolution or the application thereof is held valid, such invalidity shall not affect other provisions, items or applications of this resolution which can be given effect without the invalid provisions, items or applications and to this end the provisions of this resolution are hereby declared severable.

BE IT FURTHER RESOLVED all resolutions or parts thereof in conflict herewith are hereby resolved.

THIS RESOLUTION HAVING BEEN SUBMITTED TO A VOTE, THE VOTE THEREON WAS AS FOLLOWS:

MOVED FOR ADOPTION BY: _____ SECONDED BY: _____

YEAS: _____

NAYS: _____

ABSTAIN: _____

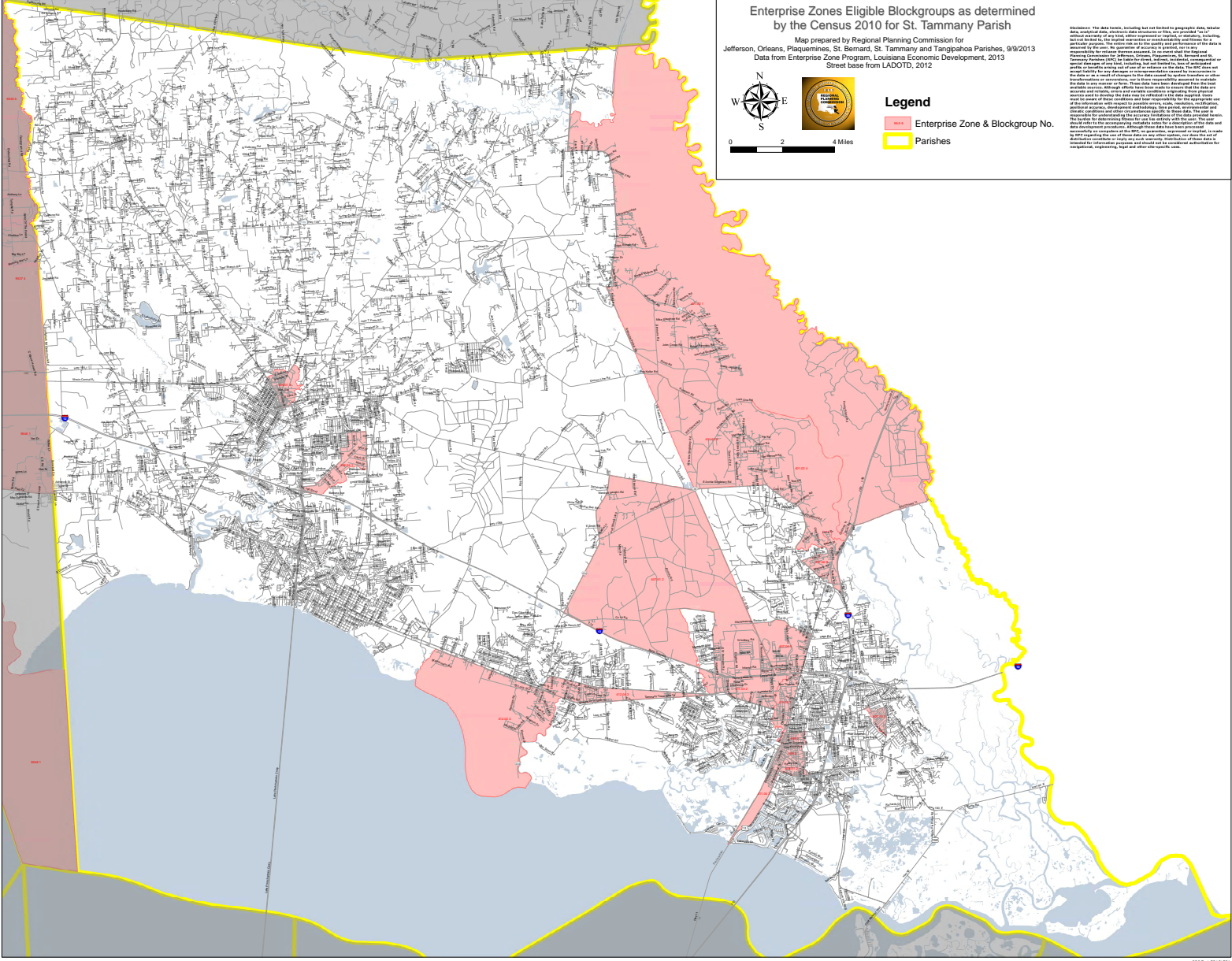
ABSENT: _____

THIS RESOLUTION WAS DECLARED ADOPTED ON THE 9 DAY OF JANUARY , 2014, AT A REGULAR MEETING OF THE PARISH COUNCIL, A QUORUM OF THE MEMBERS BEING PRESENT AND VOTING.

JERRY BINDER, COUNCIL CHAIRMAN

ATTEST:

THERESA L. FORD, COUNCIL CLERK





Enterprise Zones Eligible Blockgroups as determined by the Census 2010 for St. Tammany Parish

Map prepared by Regional Planning Commission for Jefferson, Orleans, Plaquemines, St. Bernard, St. Tammany and Tangipahoa Parishes, 9/9/2013
Data from Enterprise Zone Program, Louisiana Economic Development, 2013
Street base from LADOTD, 2012



Legend

-  Enterprise Zone & Blockgroup No.
-  Parishes

Disclaimer: The data herein, including but not limited to geographic data, relative to the Enterprise Zones, is derived from the 2010 Census. This information is provided without warranty of any kind, either expressed or implied, or otherwise, including but not limited to the accuracy, completeness, reliability, timeliness, or suitability for any particular purpose. The user assumes all liability for any and all uses of the data herein. The Regional Planning Commission and Louisiana Economic Development are not responsible for any errors or omissions in this information. The user assumes all liability for any uses of the data herein. The data herein is provided for informational purposes only and should not be used as a basis for any business decision. The data herein is provided for informational purposes only and should not be used as a basis for any business decision. The data herein is provided for informational purposes only and should not be used as a basis for any business decision.

ADMINISTRATIVE COMMENTS

The Louisiana Enterprise Zone Program offers significant incentives for economic development to some of the most distressed areas in the Parish of St. Tammany. The program is a jobs incentive program that provides Louisiana income and franchise tax credits to a new or existing business located in Louisiana creating permanent net new full-time jobs, and hiring at least 35% of those net new jobs from one of four targeted groups

It open to any Louisiana business (new or existing) not engaged in on-site gaming, video poker or residential development, and not a church, and targets economically distressed areas within the state that have high unemployment rates, low per capita income and/or a high number of residents receiving public assistance, and

St. Tammany Parish has long recognized the benefits of participation in the Louisiana Enterprise Zone Program. As a result of the 2010 United States Census, the number of eligible block groups has increased from nine (9) block groups to seventeen (17) block groups as represented on the attached map.