

ST. TAMMANY PARISH COUNCIL

RESOLUTION

RESOLUTION COUNCIL SERIES NO: C-3909

COUNCIL SPONSOR: BINDER/BRISTER

PROVIDED BY: LEGAL DEPARTMENT

RESOLUTION TO AUTHORIZE THE PUBLICATION OF A NOTICE DESCRIBING THE BOUNDARIES OF THE HWY 1077 ECONOMIC DEVELOPMENT DISTRICT, AND PROVIDING FOR OTHER MATTERS IN CONNECTION THEREWITH (DISTRICT 1 AND DISTRICT 3).

WHEREAS, the Parish Council desires to consider the creation of an economic development district pursuant to Part II of Chapter 27 of Title 33 of the Louisiana Revised Statutes of 1950, as amended (La.R.S. 33:9038.31 through 33:9038.42, inclusive) (the "Act"); and

WHEREAS, the Act requires the publication of a notice two (2) times expressing the intent to consider the creation of an economic development district; and

WHEREAS, a notice in substantially the form attached hereto as Exhibit "A", shall be published two (2) times in the St. Tammany Farmer, the official journal of the Parish of St. Tammany, Louisiana; and

WHEREAS, pursuant to the terms of said notice, the creation of the Hwy 1077 Economic Development District, (the "District") will be considered.

THE PARISH OF ST. TAMMANY HEREBY RESOLVES that, the Parish Council, acting as governing authority, that the publication of the notice described in the recitals of this resolution for the purposes set forth therein is hereby approved and authorized to be published once a week for two consecutive weeks in the official journal of this Parish.

BE IT FURTHER RESOLVED: that the Parish President and the Council Clerk are hereby authorized and empowered to do all acts, sign any and all instruments or documents, and do all things necessary and proper in order to carry out the purposes of this resolution.

THIS RESOLUTION HAVING BEEN SUBMITTED TO A VOTE, THE VOTE THEREON WAS AS FOLLOWS:

MOVED FOR ADOPTION BY: _____ SECONDED BY: _____

YEAS: _____

NAYS: _____

ABSTAIN: _____

ABSENT: _____

THIS RESOLUTION WAS DECLARED ADOPTED ON THE 9 DAY OF JANUARY , 2014, AT A REGULAR MEETING OF THE PARISH COUNCIL, A QUORUM OF THE MEMBERS BEING PRESENT AND VOTING.

JERRY BINDER, COUNCIL CHAIRMAN

ATTEST:

THERESA L. FORD, COUNCIL CLERK

Resolution Administrative Comment

RESOLUTION TO AUTHORIZE THE PUBLICATION OF A NOTICE DESCRIBING THE BOUNDARIES OF THE HWY 1077 ECONOMIC DEVELOPMENT DISTRICT, AND PROVIDING FOR OTHER MATTERS IN CONNECTION THEREWITH (DISTRICTS 1 AND 3).

St. Tammany Parish seeks to authorize the publication of a Notice in the official journal, describing the boundaries of the Hwy. 1077 Economic Development District.

EXHIBIT "A"

PARISH OF ST. TAMMANY, STATE OF LOUISIANA OFFICIAL NOTICE

NOTICE IS HEREBY GIVEN that the St. Tammany Parish Council proposes to consider the creation of an economic development district to be called "Hwy 1077 Economic Development District" (the "District").

The boundaries of the District are:

All that certain piece or parcel of land, commencing at a point located at the section corner common to Sections 33 & 34, Township 6 South, Range 10 East and Sections 4 & 5, Township 7 South, Range 10 East to a point, said point being the Point of Beginning;

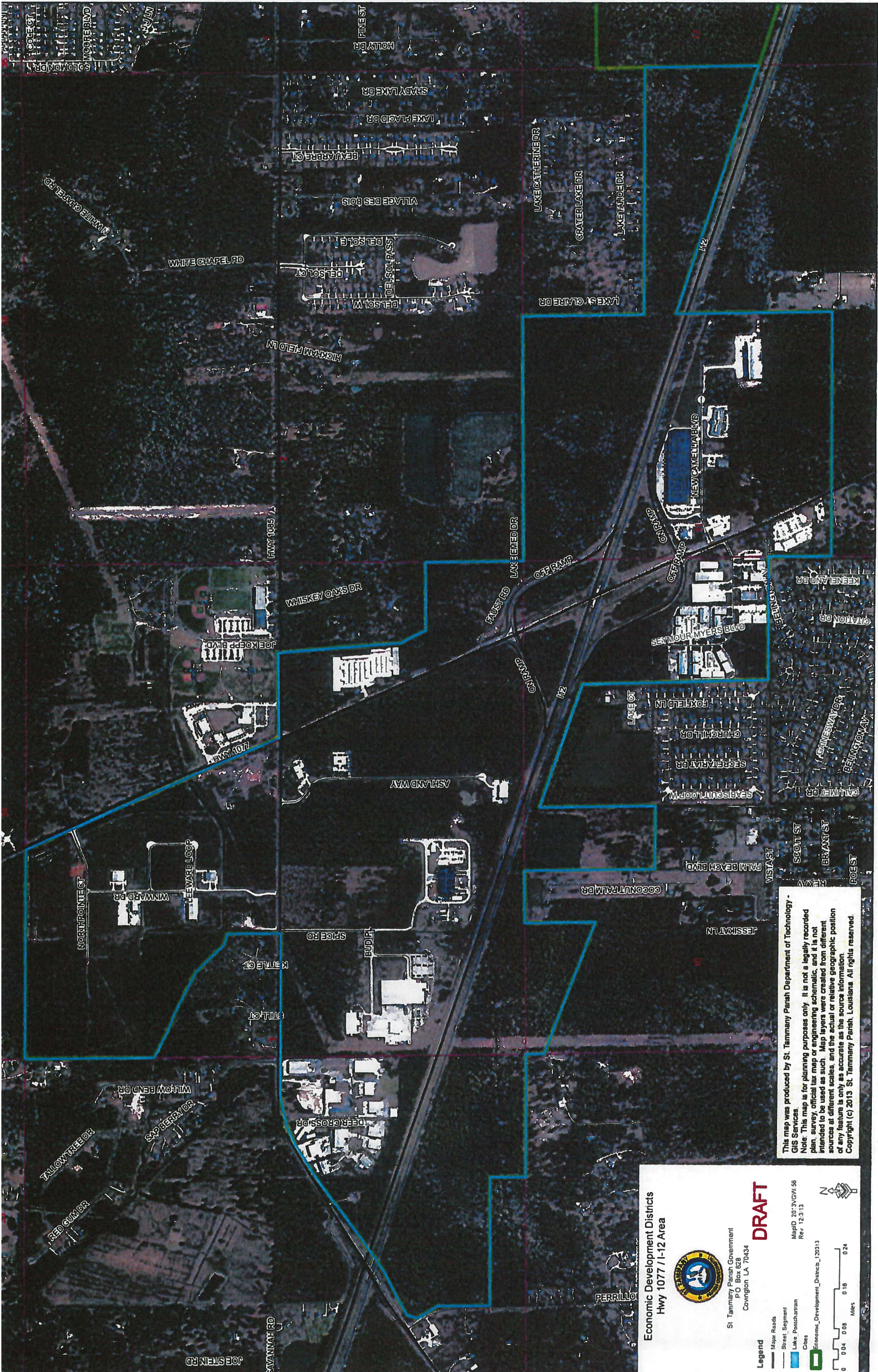
From the Point of Beginning proceed North 89 degrees 55 minutes 19 seconds East along the section line common to Sections 34, Township 6 South, Range 10 East and Section 3, Township 7 South, Range 10 East, 2278.655 feet to a point on the centerline of Hwy 1077;
thence following said centerline proceed South 24 degrees 18 minutes 53 seconds East, 2973.642 feet to a point on the centerline of Hwy 1085;
thence following said centerline proceed North 88 degrees 45 minutes 36 seconds East, 921.075 feet;
thence leaving said centerline proceed South 4 degrees 43 minutes 21 seconds East, 947.543 feet;
thence proceed South 4 degrees 54 minutes 7 seconds East, 368.2 feet;
thence proceed South 27 degrees 23 minutes 4 seconds East, 306.76 feet;
thence proceed North 89 degrees 8 minutes 17 seconds East, 732.408 feet;
thence proceed South 1 degrees 0 minutes 42 seconds East, 1046.415 feet;
thence proceed North 89 degrees 28 minutes 36 seconds East, 1663.848 feet;
thence proceed North 89 degrees 33 minutes 1 seconds East, 0.264 feet;
thence proceed North 89 degrees 37 minutes 26 seconds East, 989.242 feet;
thence proceed South 0 degrees 56 minutes 33 seconds East, 1295.128 feet;
thence proceed North 89 degrees 58 minutes 28 seconds East, 2679.55 feet;
thence proceed South 1 degrees 7 minutes 11 seconds East, 1217.593 feet to a point on the northern right of way of I-12;
thence following said right of way proceed North 72 degrees 1 minutes 57 seconds West, 2832.609 feet;
thence leaving said right of way proceed South 1 degrees 2 minutes 1 seconds East, 1670.928 feet;
thence proceed South 89 degrees 50 minutes 55 seconds West, 2650.9 feet;
thence proceed North 0 degrees 33 minutes 2 seconds West, 671.971 feet;
thence proceed South 89 degrees 45 minutes 11 seconds West, 1335.04 feet;
thence proceed North 1 degrees 29 minutes 58 seconds West, 1986.503 feet;
thence proceed North 74 degrees 38 minutes 19 seconds West, 1.309 feet;
thence proceed North 71 degrees 41 minutes 18 seconds West, 1417.242 feet;
thence proceed South 0 degrees 55 minutes 59 seconds East, 1235.647 feet;
thence proceed North 89 degrees 38 minutes 35 seconds West, 684.872 feet;
thence proceed North 0 degrees 48 minutes 24 seconds West, 1393.475 feet;
thence proceed South 89 degrees 11 minutes 0 seconds West, 572.579 feet;
thence proceed South 1 degrees 5 minutes 53 seconds East, 753.454 feet;
thence proceed North 69 degrees 25 minutes 10 seconds West, 1526.122 feet;
thence proceed North 1 degrees 23 minutes 52 seconds West, 196.673 feet;
thence proceed South 89 degrees 39 minutes 3 seconds West, 510.546 feet;
thence proceed South 89 degrees 37 minutes 11 seconds West, 782.558 feet;
thence proceed South 83 degrees 55 minutes 0 seconds West, 50.836 feet;
thence proceed North 0 degrees 19 minutes 35 seconds West, 385.495 feet;
thence proceed South 89 degrees 55 minutes 19 seconds West, 1380.465 feet to a point on the eastern right of way of Perrilloux Road;
thence following said right of way proceed North 0 degrees 30 minutes 5 seconds West, 561.304 feet to its intersection with the southern right of way of Hwy 1085;

EXHIBIT "A" CONTINUED

thence following said right of way proceed North 33 degrees 6 minutes 23 seconds West, 248.3 feet;
thence proceed North 16 degrees 8 minutes 17 seconds East, 126.2 feet;
thence proceed North 62 degrees 7 minutes 48 seconds East, 519.098 feet;
thence proceed North 55 degrees 31 minutes 48 seconds East, 394.584 feet;
thence proceed North 53 degrees 33 minutes 40 seconds East, 845.746 feet;
thence proceed North 57 degrees 52 minutes 40 seconds East, 450.546 feet;
thence proceed North 66 degrees 40 minutes 30 seconds East, 217.086 feet;
thence proceed North 77 degrees 29 minutes 45 seconds East, 323.139 feet;
thence proceed North 89 degrees 46 minutes 57 seconds East, 1773.136 feet;
thence leaving said right of way proceed North 1 degrees 6 minutes 50 seconds West, 575.661 feet;
thence proceed North 76 degrees 51 minutes 25 seconds West, 109.05 feet;
thence proceed North 45 degrees 3 minutes 38 seconds West, 424.09 feet;
thence proceed North 63 degrees 23 minutes 29 seconds West, 480.74 feet;
thence proceed North 67 degrees 52 minutes 55 seconds West, 217.13 feet;
thence proceed North 64 degrees 4 minutes 32 seconds West, 341.368 feet;
thence proceed North 0 degrees 45 minutes 59 seconds West, 1390.514 feet to the Point of Beginning.

The public is further notified that the Parish of St. Tammany, State of Louisiana plans to consider creation of the District.

EXHIBIT "A" CONTINUED



Economic Development Districts Hwy 1077 / I-12 Area



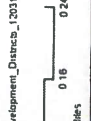
St. Tammany Parish Government
P.O. Box 828
Covington, LA 70434

DRAFT

MapID 20-3VGV-56
Rev. 12.3.13

Legend

- Major Roads
- Street Segment
- Lake/Pond/Channel
- City
- Economic_Development_Districts_120113



This map was produced by St. Tammany Parish Department of Technology - GIS Services.
Note: This map is for planning purposes only. It is not a legally recorded plan, survey, official tax map or engineering schematic, and it is not intended to be used as such. Map layers were created from different sources at different scales, and the actual or relative geographic position of any feature is only as accurate as the source information.
Copyright (c) 2013 St. Tammany Parish, Louisiana. All rights reserved.