

ST. TAMMANY PARISH COUNCIL

RESOLUTION

RESOLUTION COUNCIL SERIES NO: C-3893

COUNCIL SPONSOR: BINDER/BRISTER

PROVIDED BY: LEGAL DEPARTMENT

RESOLUTION TO AUTHORIZE THE PUBLICATION OF A NOTICE DESCRIBING THE BOUNDARIES OF THE HWY 1088 ECONOMIC DEVELOPMENT DISTRICT, AND PROVIDING FOR OTHER MATTERS IN CONNECTION THEREWITH (DISTRICT 5 AND DISTRICT 7).

WHEREAS, the Parish Council desires to consider the creation of an economic development district pursuant to Part II of Chapter 27 of Title 33 of the Louisiana Revised Statutes of 1950, as amended (La.R.S. 33:9038.31 through 33:9038.42, inclusive) (the "Act"); and

WHEREAS, the Act requires the publication of a notice two (2) times expressing the intent to consider the creation of an economic development district; and

WHEREAS, a notice in substantially the form attached hereto as Exhibit "A", shall be published two (2) times in the St. Tammany Farmer, the official journal of the Parish of St. Tammany, Louisiana; and

WHEREAS, pursuant to the terms of said notice, the creation of the Hwy 1088 Economic Development District, (the "District") will be considered.

THE PARISH OF ST. TAMMANY HEREBY RESOLVES that the Parish Council, acting as governing authority, that the publication of the notice described in the recitals of this resolution for the purposes set forth therein is hereby approved and authorized to be published once a week for two consecutive weeks in the official journal of this Parish.

BE IT FURTHER RESOLVED: that the Parish President and the Council Clerk are hereby authorized and empowered to do all acts, sign any and all instruments or documents, and do all things necessary and proper in order to carry out the purposes of this resolution.

THIS RESOLUTION HAVING BEEN SUBMITTED TO A VOTE, THE VOTE THEREON WAS AS FOLLOWS:

MOVED FOR ADOPTION BY: _____ SECONDED BY: _____

YEAS: _____

NAYS: _____

ABSTAIN: _____

ABSENT: _____

THIS RESOLUTION WAS DECLARED ADOPTED ON THE 9 DAY OF JANUARY, 2014, AT A REGULAR MEETING OF THE PARISH COUNCIL, A QUORUM OF THE MEMBERS BEING PRESENT AND VOTING.

JERRY BINDER, COUNCIL CHAIRMAN

ATTEST:

THERESA L. FORD, COUNCIL CLERK

Resolution Administrative Comment

RESOLUTION TO AUTHORIZE THE PUBLICATION OF A NOTICE DESCRIBING THE BOUNDARIES OF THE HWY 1088 ECONOMIC DEVELOPMENT DISTRICT, AND PROVIDING FOR OTHER MATTERS IN CONNECTION THEREWITH (DISTRICT 1).

St. Tammany Parish seeks to authorize the publication of a Notice in the official journal, describing the boundaries of the Hwy 1088 Economic Development District.

EXHIBIT "A"

PARISH OF ST. TAMMANY, STATE OF LOUISIANA OFFICIAL NOTICE

NOTICE IS HEREBY GIVEN that the St. Tammany Parish Council proposes to consider the creation of an economic development district to be called "Hwy 1088 Economic Development District" (the "District").

The boundaries of the District are:

All that certain piece or parcel of land commencing at a point located at the Section corner common to Sections 28, 29, 32, & 33 Township 7 South, Range 12 East, said point being the Point of Beginning;

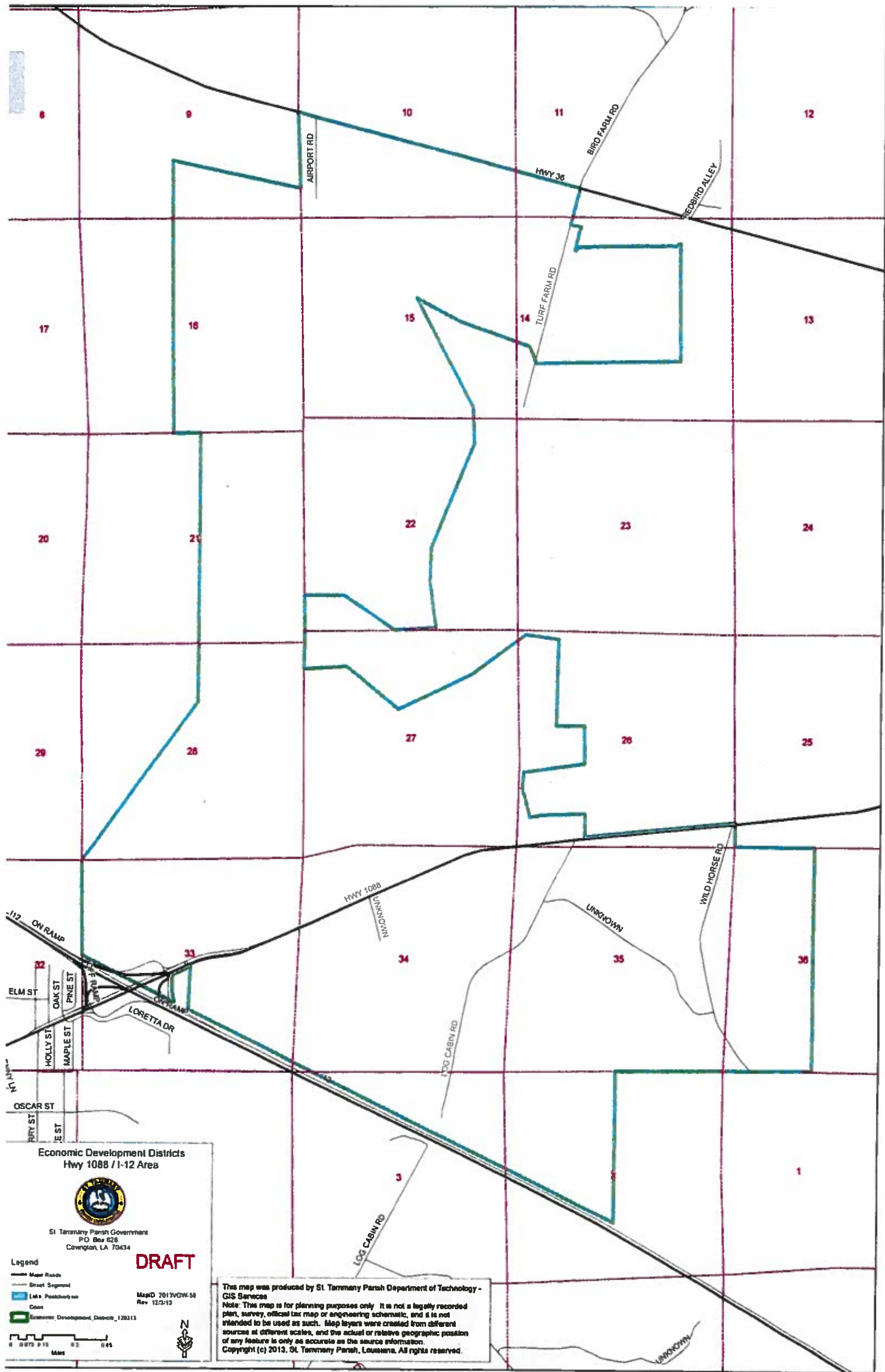
From the point of Beginning proceed North 35 degrees 29 minutes 17 seconds East, 4907.294 feet;
thence proceed North 0 degrees 0 minutes 0 seconds East, 6670 feet;
thence proceed South 89 degrees 3 minutes 52 seconds West, 670 feet;
thence proceed North 0 degrees 31 minutes 28 seconds West, 6791.19 feet;
thence proceed South 77 degrees 47 minutes 42 seconds East, 3227.255 feet;
thence proceed North 1 degrees 41 minutes 2 seconds West, 1900.906 feet;
thence proceed South 74 degrees 52 minutes 50 seconds East, 448.876 feet;
thence proceed South 74 degrees 48 minutes 7 seconds East, 6747.593 feet;
thence proceed South 13 degrees 49 minutes 52 seconds West, 927.308 feet;
thence proceed South 75 degrees 44 minutes 1 seconds East, 258.831 feet;
thence proceed South 13 degrees 32 minutes 41 seconds West, 607.3 feet;
thence proceed South 74 degrees 54 minutes 8 seconds East, 37.08 feet;
thence proceed North 26 degrees 26 minutes 27 seconds East, 95.68 feet;
thence proceed North 88 degrees 15 minutes 31 seconds East, 808.69 feet;
thence proceed North 89 degrees 28 minutes 36 seconds East, 1635.9 feet;
thence proceed North 33 degrees 2 minutes 30 seconds East, 58.26 feet;
thence proceed North 83 degrees 51 minutes 26 seconds East, 55.78 feet;
thence proceed South 0 degrees 15 minutes 3 seconds East, 2911.448 feet;
thence proceed South 89 degrees 2 minutes 18 seconds West, 3566.998 feet;
thence proceed North 14 degrees 7 minutes 40 seconds West, 87.214 feet;
thence proceed North 21 degrees 2 minutes 24 seconds West, 170.524 feet;
thence proceed North 25 degrees 49 minutes 40 seconds West, 207.451 feet;
thence proceed North 70 degrees 7 minutes 19 seconds West, 1785.354 feet;
thence proceed North 62 degrees 30 minutes 20 seconds West, 1223.489 feet;
thence proceed South 27 degrees 23 minutes 15 seconds East, 3052.608 feet;
thence proceed South 2 degrees 27 minutes 4 seconds East, 891.214 feet;
thence proceed South 21 degrees 48 minutes 5 seconds West, 2813.741 feet;
thence proceed South 1 degrees 47 minutes 13 seconds West, 817.412 feet;
thence proceed South 7 degrees 44 minutes 1 seconds East, 1146.463 feet;
thence proceed South 86 degrees 27 minutes 16 seconds West, 1017.914 feet;
thence proceed North 55 degrees 37 minutes 11 seconds West, 1503.602 feet;
thence proceed South 90 degrees 0 minutes 0 seconds West, 979.684 feet;
thence proceed South 0 degrees 35 minutes 55 seconds East, 895.468 feet;
thence proceed South 0 degrees 14 minutes 21 seconds West, 933.333 feet;
thence proceed North 86 degrees 25 minutes 25 seconds East, 1047.037 feet;
thence proceed South 50 degrees 36 minutes 33 seconds East, 1661.547 feet;
thence proceed North 64 degrees 28 minutes 7 seconds East, 1974.234 feet;
thence proceed North 53 degrees 12 minutes 19 seconds East, 1682.793 feet;
thence proceed South 81 degrees 22 minutes 33 seconds East, 813.968 feet;
thence proceed South 1 degrees 7 minutes 24 seconds West, 2145.608 feet;
thence proceed North 89 degrees 47 minutes 21 seconds East, 689.506 feet;
thence proceed South 0 degrees 34 minutes 31 seconds East, 961.651 feet;
thence proceed South 81 degrees 49 minutes 51 seconds West, 1514.383 feet;
thence proceed South 5 degrees 11 minutes 39 seconds West, 375.946 feet;
thence proceed South 14 degrees 2 minutes 10 seconds East, 771.845 feet;
thence proceed North 80 degrees 57 minutes 21 seconds East, 324.78 feet;
thence proceed North 87 degrees 56 minutes 38 seconds East, 1038.332 feet;
thence proceed South 0 degrees 34 minutes 31 seconds East, 572.505 feet;
thence proceed North 84 degrees 19 minutes 58 seconds East, 3714.456 feet;

EXHIBIT "A" CONTINUED

thence proceed South 0 degrees 31 minutes 9 seconds East, 598.928 feet;
thence proceed South 89 degrees 57 minutes 5 seconds East, 1972.667 feet;
thence proceed South 0 degrees 17 minutes 46 seconds West, 5559.914 feet;
thence proceed South 89 degrees 51 minutes 36 seconds West, 2181.595 feet;
thence proceed South 89 degrees 34 minutes 17 seconds West, 2660.181 feet;
thence proceed South 0 degrees 7 minutes 25 seconds West, 3796.254 feet;
thence proceed North 63 degrees 19 minutes 45 seconds West, 11771.75 feet;
thence proceed North 2 degrees 18 minutes 43 seconds East, 1063.369 feet;
thence proceed South 64 degrees 59 minutes 26 seconds West, 452.235 feet;
thence proceed South 25 degrees 39 minutes 29 seconds West, 82.45 feet;
thence proceed South 0 degrees 7 minutes 57 seconds West, 329.46 feet;
thence proceed South 8 degrees 51 minutes 41 seconds East, 290.882 feet;
thence proceed North 63 degrees 19 minutes 45 seconds West, 2548.624 feet to the Point of Beginning.

The public is further notified that the Parish of St. Tammany, State of Louisiana plans to consider creation of the District.

EXHIBIT "A" CONTINUED



Economic Development Districts
Hwy 1088 / I-12 Area



St. Tammany Parish Government
P.O. Box 828
Covington, LA 70434

DRAFT

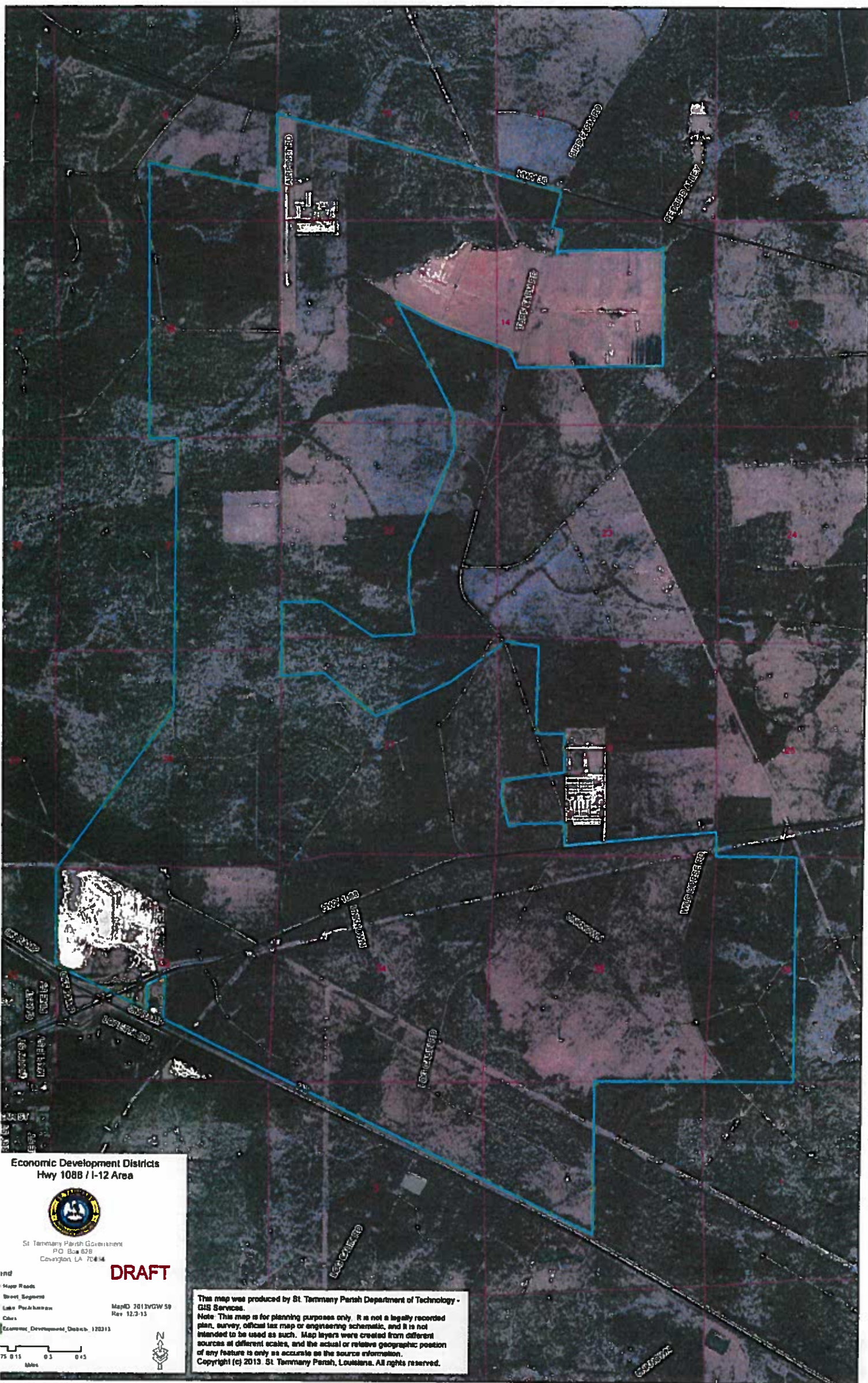
Legend
 - Map Roads
 - Street Segment
 - Lot & Parcellary use
 - Canal
 - Economic Development Districts, 12/13

MapID 2013VOW-58
Rev 12/2/13

0 0.125 0.25 0.5
Miles

This map was produced by St. Tammany Parish Department of Technology - GIS Services
 Note: This map is for planning purposes only. It is not a legally recorded plan, survey, official tax map or engineering schematic, and it is not intended to be used as such. Map layers were created from different sources at different scales, and the actual or relative geographic position of any feature is only as accurate as the source information.
 Copyright (c) 2013, St. Tammany Parish, Louisiana. All rights reserved.

EXHIBIT "A" CONTINUED



**Economic Development Districts
Hwy 1088 / I-12 Area**



St. Tammany Parish Government
P.O. Box 629
Covington, LA 70444

DRAFT

MapID 2011VGVW 59
Rev 12-7-13

Economic Development Districts 120313

75 0.15 0.3 0.45
Miles



This map was produced by St. Tammany Parish Department of Technology - GIS Services.
Note: This map is for planning purposes only. It is not a legally recorded plan, survey, official lot map or engineering schematic, and it is not intended to be used as such. Map layers were created from different sources at different scales, and the actual or relative geographic position of any feature is only as accurate as the source information.
Copyright (c) 2013. St. Tammany Parish, Louisiana. All rights reserved.