

ST. TAMMANY PARISH COUNCIL

ORDINANCE

ORDINANCE CALENDAR NO: 5423 ORDINANCE COUNCIL SERIES NO: _____
COUNCIL SPONSOR: MR. BINDER PROVIDED BY: COUNCIL ATTORNEY
INTRODUCED BY: _____ SECONDED BY: _____

ON THE 9 DAY OF JULY , 2015
ORDINANCE ESTABLISHING NO PARKING ZONES ON A
PORTION OF RIO STREET (WARD 9, DISTRICT 12).

WHEREAS, to further promote the public health, safety and general welfare.

THE PARISH OF ST. TAMMANY HEREBY ORDAINS:

SECTION I: "NO PARKING" zones are hereby established on both the north and south sides of a portion of Rio St. (09-J-64), as outlined in the attached drawing;

SECTION II: The Parish Department of Public Works is directed to post the appropriate signs at these locations, in accordance with provided Engineering data.

REPEAL: All ordinances or parts of Ordinances in conflict herewith are hereby repealed.

SEVERABILITY: If any provision of this Ordinance shall be held to be invalid, such invalidity shall not affect other provisions herein which can be given effect without the invalid provision and to this end the provisions of this Ordinance are hereby declared to be severable.

EFFECTIVE DATE: This Ordinance shall become effective immediately upon final adoption.

MOVED FOR ADOPTION BY: SECONDED BY: _____

WHEREUPON THIS ORDINANCE WAS SUBMITTED TO A VOTE AND RESULTED IN THE FOLLOWING:

YEAS: _____

NAYS: _____

ABSTAIN: _____

ABSENT: _____

THIS ORDINANCE WAS DECLARED DULY ADOPTED AT A REGULAR MEETING OF THE PARISH COUNCIL ON THE 6 DAY OF AUGUST , 2015 ; AND BECOMES ORDINANCE COUNCIL SERIES NO ____.

RICHARD E. TANNER, COUNCIL CHAIRMAN

ATTEST:

THERESA L. FORD, COUNCIL CLERK

PATRICIA P. BRISTER, PARISH PRESIDENT

Published Introduction: JUNE 25 , 2015

Published Adoption: _____, 2015

Delivered to Parish President: _____, 2015 at _____

Returned to Council Clerk: _____, 2015 at _____





St. Tammany Parish

Department of Engineering

P. O. Box 628

Covington, LA 70434

Phone: 985.898.2552

Fax: 985.867.5110


E-mail: eng@stpgov.org

Pat Brister

Parish President

Date: June 11, 2015

To: Joey Lobrano
Right Of Way Coordinator
Department Of Public Works

From: Jay Watson, P.E. 
Development Engineer

Re: Project No. 15-043
District 12
Rio St. 9-J-64
2-No Parking w/ Left Arrow sign
2-No Parking w/ Right Arrow sign
1-Speed Limit 20 sign

The Department of Engineering recommends the installation of Signage to be installed in District 12.

As per MUTCD, when signs with arrows are used to indicate the restricted parking zones, the signs with the arrows should be set at an angle of not less than 30 degrees and not more than 45 degrees with the line of traffic flow in order to be visible to approaching traffic.

1. Install NO PARKING Left Arrow sign and NO PARKING Right Arrow sign on each side of Rio, on the west side property line of address 37682.
2. Install NO PARKING Left Arrow sign and NO PARKING Right Arrow sign on each side of Rio, on the east side property line of address 37682.
3. Raise and Replace SPEED LIMIT 20 sign on Rio near the Howze Beach Blvd intersection.

cc. Charles E. Williams, P.E.
Michael Spiehler
Councilman Jerry Binder

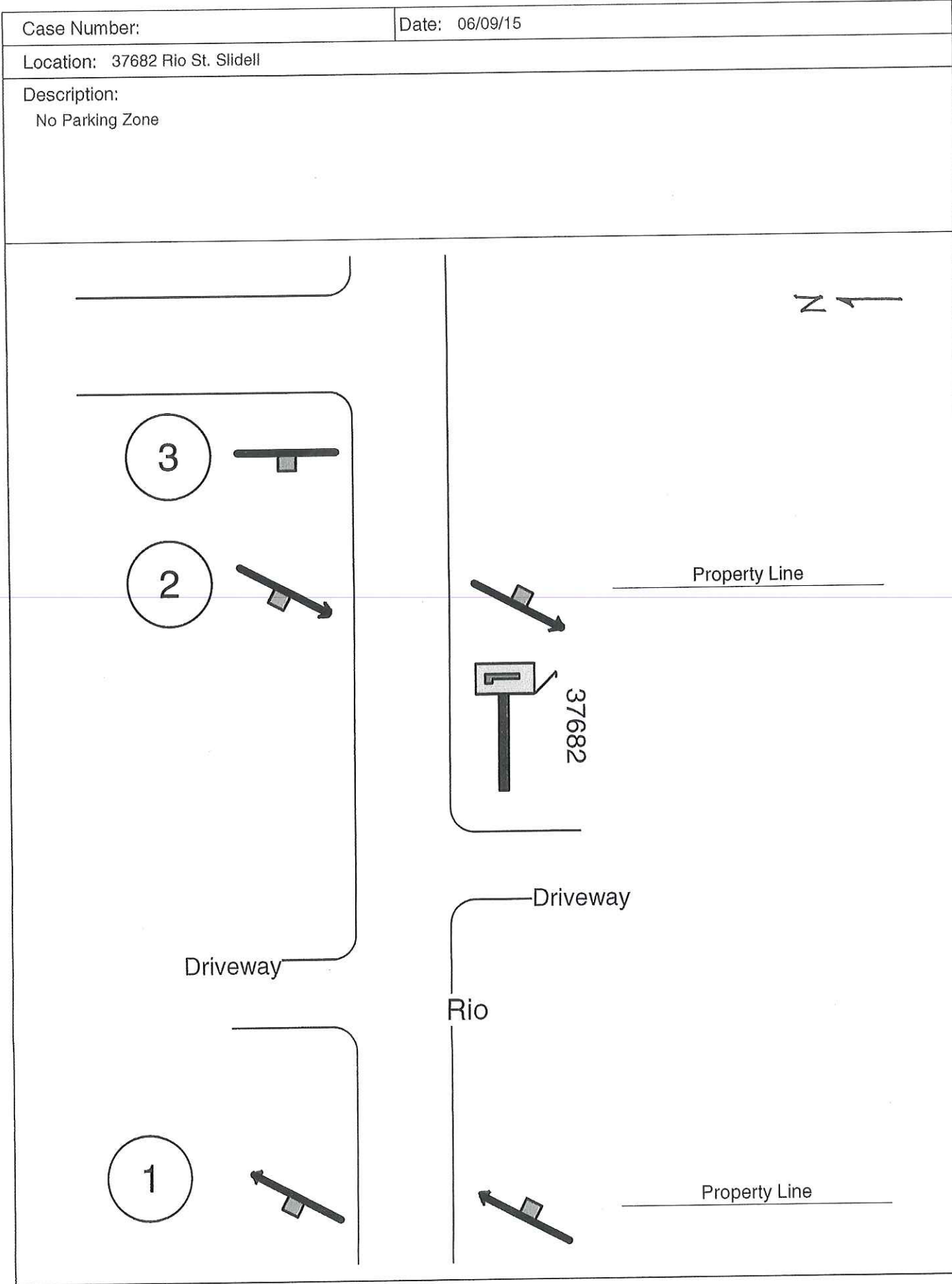
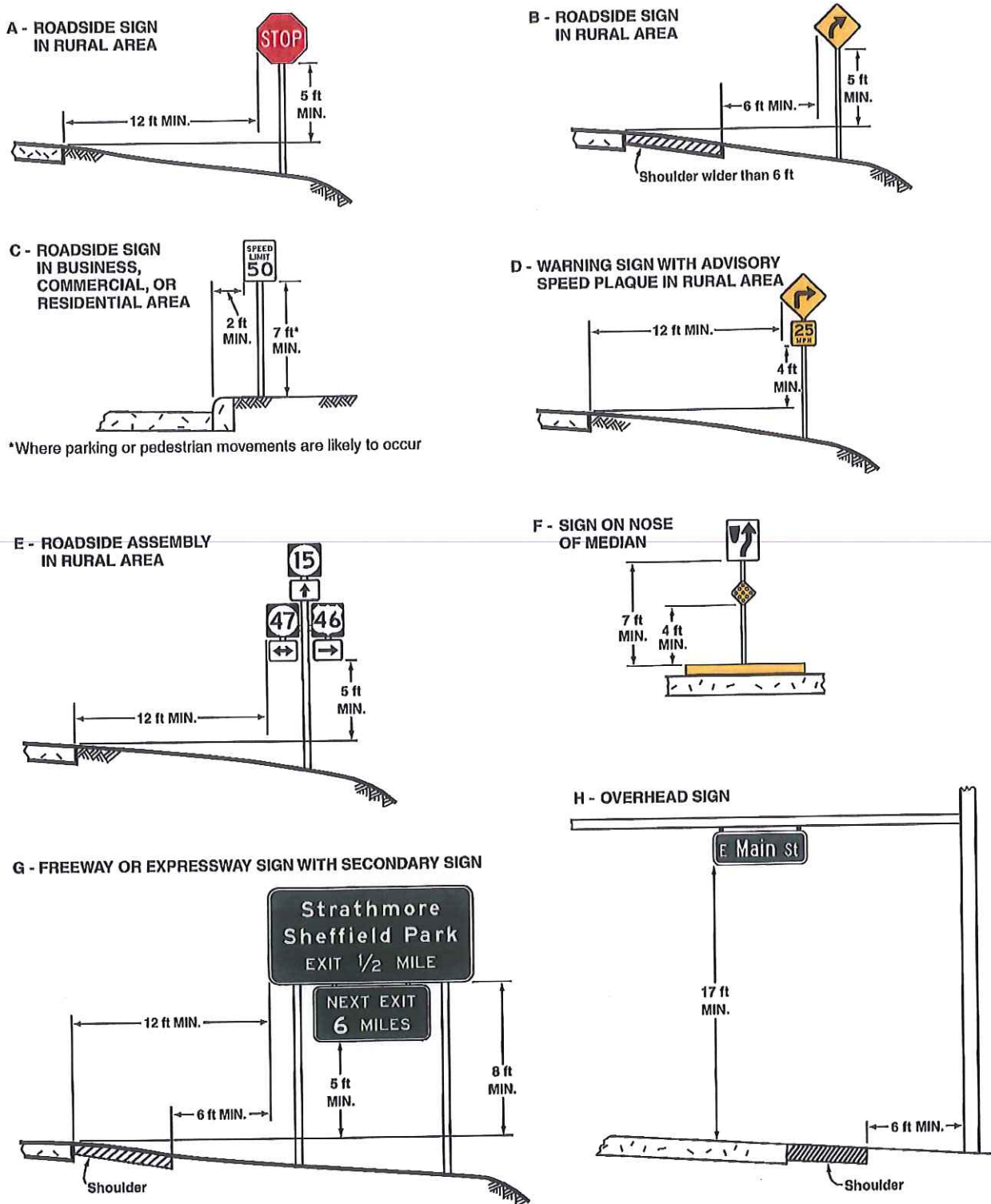
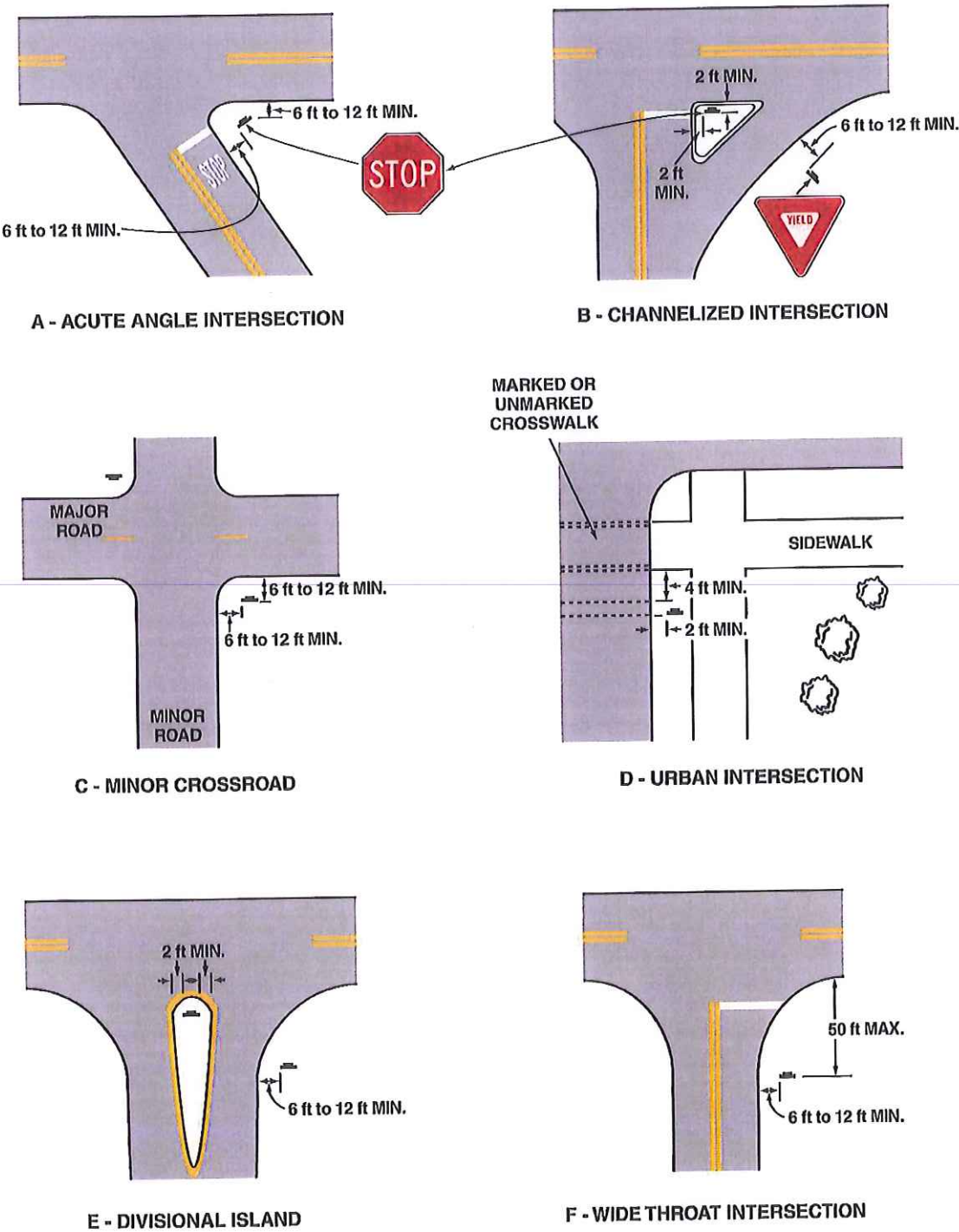


Figure 2A-2. Examples of Heights and Lateral Locations of Sign Installations



Note:
See Section 2A.19 for reduced lateral offset distances that may be used in areas where lateral offsets are limited, and in business, commercial, or residential areas where sidewalk width is limited or where existing poles are close to the curb.

Figure 2A-3. Examples of Locations for Some Typical Signs at Intersections



Note: Lateral offset is a minimum of 6 feet measured from the edge of the shoulder, or 12 feet measured from the edge of the traveled way. See Section 2A.19 for lower minimums that may be used in urban areas, or where lateral offset space is limited.