

ST. TAMMANY PARISH COUNCIL

ORDINANCE

ORDINANCE CALENDAR NO: 5130

ORDINANCE COUNCIL SERIES NO: \_\_\_\_\_

COUNCIL SPONSOR: BINDER/BRISTER

PROVIDED BY: LEGAL DEPARTMENT

INTRODUCED BY: MR. STEFANCIK

SECONDED BY: MR. BELLISARIO

ON THE 9 DAY OF JANUARY , 2014

ORDINANCE TO AMEND THE PARISH CODE OF ORDINANCES, CHAPTER 18, BY ADDING A NEW ARTICLE THERETO CREATING THE 'HWY 434 ECONOMIC DEVELOPMENT DISTRICT', DEFINING THE BOUNDARIES THEREOF IN ACCORDANCE WITH AND AS PART II OF CHAPTER 27 OF TITLE 33 OF THE LOUISIANA REVISED STATUTES OF 1950, AS AMENDED; AND PROVIDING FOR OTHER MATTERS IN CONNECTION THEREWITH (DISTRICT 7 AND DISTRICT 11).

WHEREAS, the Parish Council proposes to create an economic development district within the Parish to be known as the "Hwy 434 Economic Development District", (the "District").

THE PARISH OF ST. TAMMANY HEREBY ORDAINS: that all of the above "Whereas" clauses are adopted as part of this ordinance.

BE IT FURTHER ORDAINED that an economic development district is hereby created within the Parish, to be named the "Hwy 434 Economic Development District", having the geographical boundaries set forth in Exhibit "A" attached hereto which Exhibit "A" is hereby incorporated in and made part of this Ordinance, all pursuant to the Act. As provided by the Act, the governing body of the District shall be the Parish Council. As provided by the Act, the District shall be a political subdivision of the State of Louisiana and shall possess such powers and authority and have such duties as provided in the Act and other law.

BE IT FURTHER ORDAINED that there has been published two times in the St. Tammany Farmer, the official journal of the Parish, a notice in the form attached hereto as Exhibit "B", describing the boundaries of the District and informing the citizens of the date of considerations of this ordinance.

BE IT FURTHER ORDAINED that this Ordinance shall be published one time in the St. Tammany Farmer.

BE IT FURTHER ORDAINED that the Parish President and is hereby authorized to do any and all things necessary and incidental to carry out the provisions of this Ordinance.

REPEAL: All ordinances or parts of Ordinances in conflict herewith are hereby repealed.

SEVERABILITY: If any provision of this Ordinance shall be held to be invalid, such invalidity shall not affect other provisions herein which can be given effect without the invalid provision and to this end the provisions of this Ordinance are hereby declared to be severable.

EFFECTIVE DATE: This Ordinance shall become effective fifteen (15) days after adoption.

MOVED FOR ADOPTION BY: \_\_\_\_\_ SECONDED BY: \_\_\_\_\_

WHEREUPON THIS ORDINANCE WAS SUBMITTED TO A VOTE AND RESULTED IN THE FOLLOWING:

YEAS: \_\_\_\_\_

NAYS: \_\_\_\_\_

ABSTAIN: \_\_\_\_\_

ABSENT: \_\_\_\_\_

THIS ORDINANCE WAS DECLARED DULY ADOPTED AT A REGULAR MEETING OF THE PARISH COUNCIL ON THE 6 DAY OF MARCH, 2014; AND BECOMES ORDINANCE COUNCIL SERIES NO \_\_\_\_\_.

\_\_\_\_\_  
R. REID FALCONER, AIA, COUNCIL CHAIRMAN

ATTEST:

\_\_\_\_\_  
THERESA L. FORD, COUNCIL CLERK

\_\_\_\_\_  
PATRICIA P. BRISTER, PARISH PRESIDENT

Published Introduction: January 2, 2014

Published Adoption: \_\_\_\_\_, 2014

Delivered to Parish President: \_\_\_\_\_, 2014 at \_\_\_\_\_

Returned to Council Clerk: \_\_\_\_\_, 2014 at \_\_\_\_\_

## **Ordinance Administrative Comment**

ORDINANCE TO AMEND THE PARISH CODE OF ORDINANCES, CHAPTER 18, BY ADDING A NEW ARTICLE THERETO CREATING THE "HWY 434 ECONOMIC DEVELOPMENT DISTRICT", DEFINING THE BOUNDARIES THEREOF IN ACCORDANCE WITH AND AS PART II OF CHAPTER 27 OF TITLE 33 OF THE LOUISIANA REVISED STATUTES OF 1950, AS AMENDED; AND PROVIDING FOR OTHER MATTERS IN CONNECTION THEREWITH. (DISTRICTS 7 AND 11).

St. Tammany Parish seeks to amend the Parish Code of Ordinances, Chapter 18, by adding a new article to create "Hwy. 434 Economic Development District".

## EXHIBIT "B"

### PARISH OF ST. TAMMANY, STATE OF LOUISIANA OFFICIAL NOTICE

**NOTICE IS HEREBY GIVEN** that the St. Tammany Parish Council proposes to consider the creation of an economic development district to be called "Hwy 434 Economic Development District" (the "District").

The boundaries of the District are:

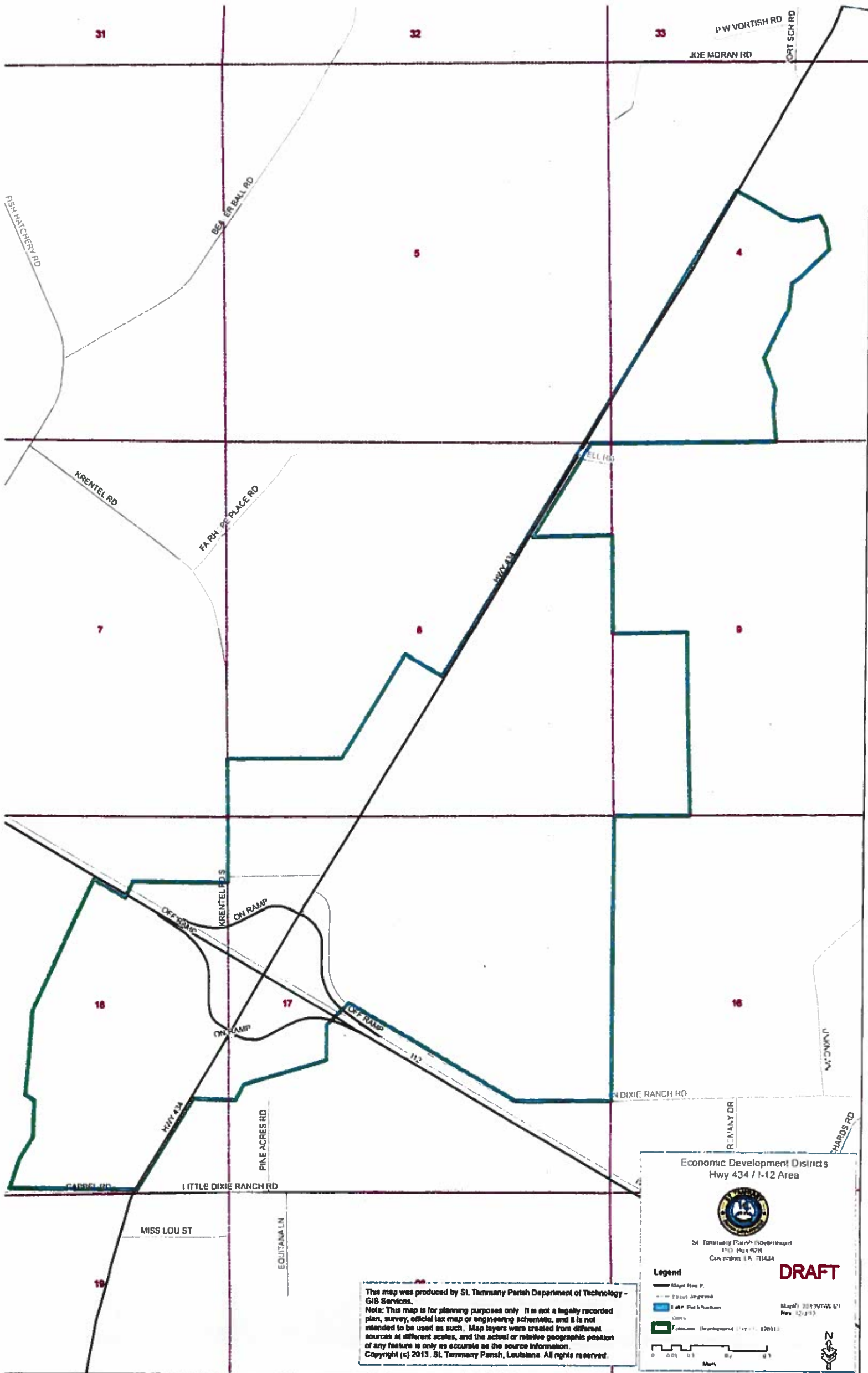
All that certain piece or parcel of land, commencing at the section corner common to Sections 8, 9, 16 and 17, Township 8 South, Range 13 East, said point being the Point of Beginning;

From the point of Beginning proceed South 0 degrees 1 minute 39 seconds West, 4013.798 feet to a point on the northern right of way of North Dixie Ranch Road;  
Thence following the northern right of way of North Dixie Ranch Road proceed South 89 degrees 48 minutes 24 seconds West, 1333.996 feet;  
thence proceed North 59 degrees 29 minutes 23 seconds West, 2681.299 feet;  
thence leaving the northern right of way of North Dixie Ranch Road proceed South 44 degrees 22 minutes 23 seconds West, 436.942 feet;  
thence proceed South 0 degrees 14 minutes 37 seconds East, 489.888 feet;  
thence proceed South 72 degrees 51 minutes 23 seconds West, 1193.644 feet;  
thence proceed South 27 degrees 39 minutes 28 seconds West, 240.871 feet;  
thence proceed North 88 degrees 15 minutes 51 seconds West, 583.214 feet to a point of the eastern right of way of Hwy 434;  
thence following the eastern right of way of Hwy 434 proceed South 30 degrees 46 minutes 19 seconds West, 1507.705 feet;  
thence leaving the eastern right of way of Hwy 434 proceed North 89 degrees 41 minutes 15 seconds West, 1769.347 feet;  
thence proceed North 18 degrees 4 minutes 10 seconds East, 440.251 feet;  
thence proceed North 31 degrees 8 minutes 24 seconds East, 360.13 feet;  
thence proceed North 1 degrees 24 minutes 53 seconds East, 519.62 feet;  
thence proceed North 57 degrees 10 minutes 54 seconds West, 147.74 feet;  
thence proceed North 4 degrees 7 minutes 43 seconds East, 1186.463 feet;  
thence proceed North 24 degrees 7 minutes 8 seconds East, 2037.063 feet to a point on the southern right of way of I-12;  
thence following the southern right of way of I-12 proceed South 58 degrees 35 minutes 50 seconds East, 515.315 feet;  
thence leaving the southern right of way of I-12 proceed North 23 degrees 49 minutes 46 seconds East, 261.78 feet;  
thence proceed South 89 degrees 34 minutes 25 seconds East, 1319.253 feet;  
thence proceed North 0 degrees 47 minutes 23 seconds West, 925.948 feet to the section corner common to Sections 7,8,17 and 18, Township 8 South, Range 13 East;  
thence proceed North 0 degrees 48 minutes 10 seconds West, 824.56 feet;  
thence proceed North 89 degrees 36 minutes 49 seconds East, 1579.189 feet;  
thence proceed North 30 degrees 36 minutes 46 seconds East, 1714.055 feet;  
thence proceed South 59 degrees 8 minutes 2 seconds East, 600.596 feet to a point on the western right of way of Hwy 434;  
thence following the western right of way of Hwy 434 proceed North 30 degrees 23 minutes 19 seconds East, 7929.632 feet;  
thence leaving the western right of way of Hwy 434 proceed South 60 degrees 23 minutes 21 seconds East, 737.793 feet;  
thence proceed South 68 degrees 44 minutes 56 seconds East, 113.722 feet;  
thence proceed South 81 degrees 1 minutes 38 seconds East, 113.265 feet;  
thence proceed North 75 degrees 25 minutes 33 seconds East, 304.206 feet;  
thence proceed South 27 degrees 21 minutes 0 seconds East, 192.252 feet;  
thence proceed South 8 degrees 44 minutes 46 seconds East, 309.797 feet;  
thence proceed South 45 degrees 0 minutes 0 seconds West, 566.262 feet;  
thence proceed South 55 degrees 37 minutes 11 seconds West, 135.56 feet;


thence proceed South 6 degrees 45 minutes 58 seconds West, 349.849 feet;  
thence proceed South 25 degrees 46 minutes 59 seconds West, 771.643 feet;  
thence proceed South 19 degrees 19 minutes 24 seconds East, 480.47 feet;  
thence proceed South 6 degrees 12 minutes 12 seconds West, 272.459 feet;  
thence proceed South 5 degrees 39 minutes 54 seconds East, 451.031 feet;  
thence proceed South 89 degrees 1 minutes 42 seconds West, 2275.861 feet to the section corner  
common to Sections 8, 9, 16 and 17, Township 8 South, Range 13 East;  
thence proceed North 89 degrees 57 minutes 57 seconds West, 282.482 feet to a point on the  
eastern right of way of Hwy 434;

The public is further notified that the Parish of St. Tammany, State of Louisiana plans to  
consider creation of the District.

# EXHIBIT "B" CONTINUED



**Economic Development Districts  
Hwy 434 / I-12 Area**



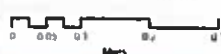

St. Tammany Parish Government  
110 Hue 828  
Covington, LA 70434

**Legend**

- Maple Hill P.
- East Jorgens
- Levee Protection
- Other
- Customs (Boundary) (11-11-2011)

**DRAFT**

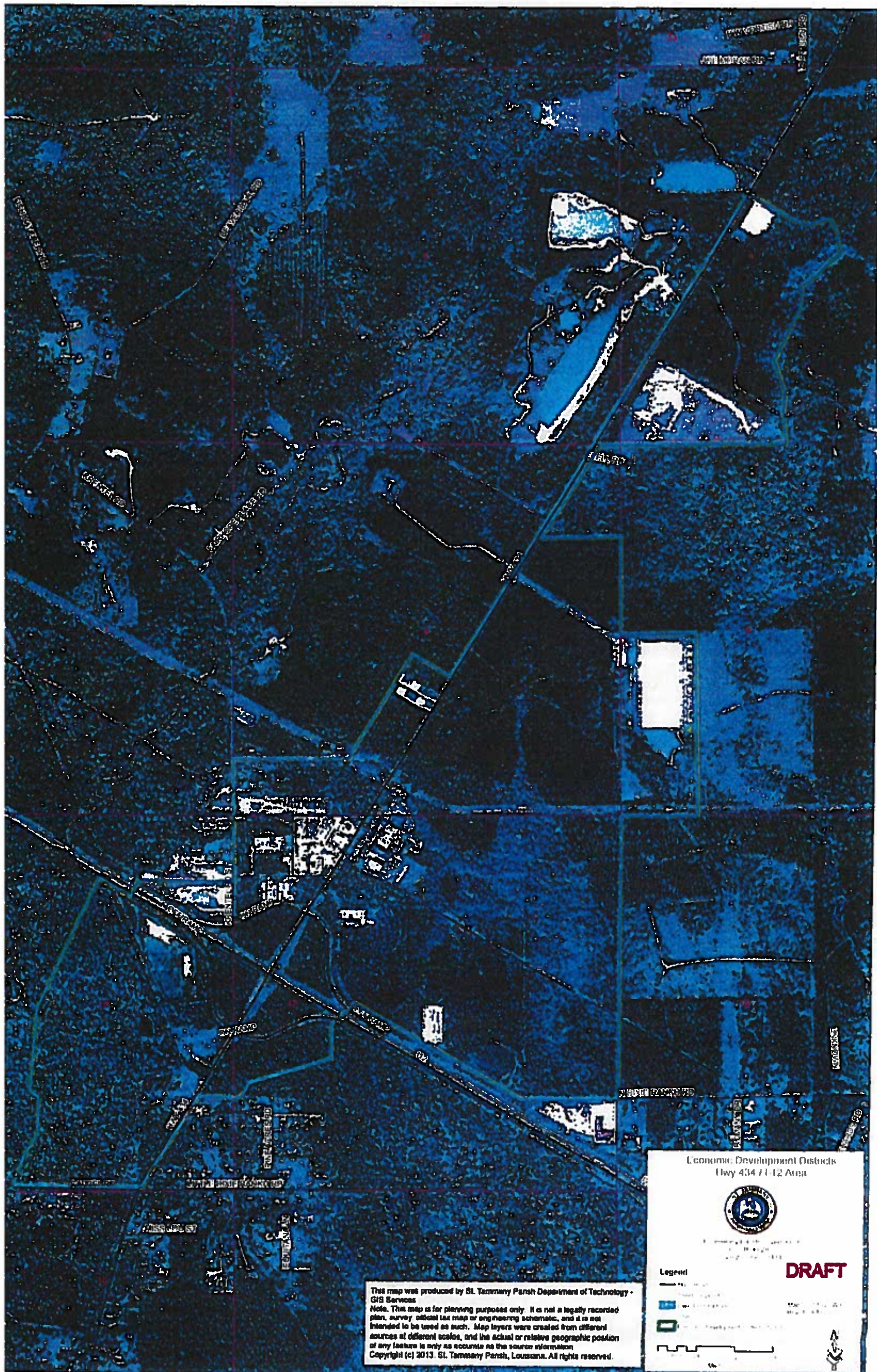
Map# 20130226-01  
Rev 01/13

This map was produced by St. Tammany Parish Department of Technology - GIS Services.  
 Note: This map is for planning purposes only. It is not a legally recorded plan, survey, official tax map or engineering schematic, and it is not intended to be used as such. Map layers were created from different sources at different scales, and the actual or relative geographic position of any feature is only as accurate as the source information.  
 Copyright (c) 2013, St. Tammany Parish, Louisiana. All rights reserved.



EXHIBIT "B" CONTINUED



Economic Development Districts  
Hwy 434 / I-12 Area



STATE OF LOUISIANA  
DEPARTMENT OF REVENUE  
1000 PINE ST., SUITE 100  
MONROE, LA 70132  
(504) 386-1000

**DRAFT**

**Legend**

- Economic Development District
- Hwy 434 / I-12
- Other

Scale: 1" = 100'

This map was produced by St. Tammany Parish Department of Technology - GIS Services.  
 Note: This map is for planning purposes only. It is not a legally recorded plan, survey official tax map or engineering schematic, and it is not intended to be used as such. Map layers were created from different sources at different scales, and the actual or relative geographic position of any feature is only as accurate as the source information.  
 Copyright (c) 2013. St. Tammany Parish, Louisiana. All rights reserved.



## EXHIBIT "A"

All that certain piece or parcel of land, commencing at the section corner common to Sections 8, 9, 16 and 17, Township 8 South, Range 13 East, said point being the Point of Beginning;

From the point of Beginning proceed South 0 degrees 1 minute 39 seconds West, 4013.798 feet to a point on the northern right of way of North Dixie Ranch Road;

Thence following the northern right of way of North Dixie Ranch Road proceed South 89 degrees 48 minutes 24 seconds West, 1333.996 feet;

thence proceed North 59 degrees 29 minutes 23 seconds West, 2681.299 feet;

thence leaving the northern right of way of North Dixie Ranch Road proceed South 44 degrees 22 minutes 23 seconds West, 436.942 feet;

thence proceed South 0 degrees 14 minutes 37 seconds East, 489.888 feet;

thence proceed South 72 degrees 51 minutes 23 seconds West, 1193.644 feet;

thence proceed South 27 degrees 39 minutes 28 seconds West, 240.871 feet;

thence proceed North 88 degrees 15 minutes 51 seconds West, 583.214 feet to a point of the eastern right of way of Hwy 434;

thence following the eastern right of way of Hwy 434 proceed South 30 degrees 46 minutes 19 seconds West, 1507.705 feet;

thence leaving the eastern right of way of Hwy 434 proceed North 89 degrees 41 minutes 15 seconds West, 1769.347 feet;

thence proceed North 18 degrees 4 minutes 10 seconds East, 440.251 feet;

thence proceed North 31 degrees 8 minutes 24 seconds East, 360.13 feet;

thence proceed North 1 degree 24 minutes 53 seconds East, 519.62 feet;

thence proceed North 57 degrees 10 minutes 54 seconds West, 147.74 feet;

thence proceed North 4 degrees 7 minutes 43 seconds East, 1186.463 feet;

thence proceed North 24 degrees 7 minutes 8 seconds East, 2037.063 feet to a point on the southern right of way of I-12;

thence following the southern right of way of I-12 proceed South 58 degrees 35 minutes 50 seconds East, 515.315 feet;

thence leaving the southern right of way of I-12 proceed North 23 degrees 49 minutes 46 seconds East, 261.78 feet;

thence proceed South 89 degrees 34 minutes 25 seconds East, 1319.253 feet;

thence proceed North 0 degrees 47 minutes 23 seconds West, 925.948 feet to the section corner common to Sections 7,8,17 and 18, Township 8 South, Range 13 East;

thence proceed North 0 degrees 48 minutes 10 seconds West, 824.56 feet;

thence proceed North 89 degrees 36 minutes 49 seconds East, 1579.189 feet;

thence proceed North 30 degrees 36 minutes 46 seconds East, 1714.055 feet;

thence proceed South 59 degrees 8 minutes 2 seconds East, 600.596 feet to a point on the western right of way of Hwy 434;

thence following the western right of way of Hwy 434 proceed North 30 degrees 23 minutes 19 seconds East, 7929.632 feet;

thence leaving the western right of way of Hwy 434 proceed South 60 degrees 23 minutes 21 seconds East, 737.793 feet;

thence proceed South 68 degrees 44 minutes 56 seconds East, 113.722 feet;

thence proceed South 81 degrees 1 minutes 38 seconds East, 113.265 feet;

thence proceed North 75 degrees 25 minutes 33 seconds East, 304.206 feet;

thence proceed South 27 degrees 21 minutes 0 seconds East, 192.252 feet;

thence proceed South 8 degrees 44 minutes 46 seconds East, 309.797 feet;

thence proceed South 45 degrees 0 minutes 0 seconds West, 566.262 feet;

thence proceed South 55 degrees 37 minutes 11 seconds West, 135.56 feet;

thence proceed South 6 degrees 45 minutes 58 seconds West, 349.849 feet;

thence proceed South 25 degrees 46 minutes 59 seconds West, 771.643 feet;

thence proceed South 19 degrees 19 minutes 24 seconds East, 480.47 feet;

thence proceed South 6 degrees 12 minutes 12 seconds West, 272.459 feet;

thence proceed South 5 degrees 39 minutes 54 seconds East, 451.031 feet;

thence proceed South 89 degrees 1 minutes 42 seconds West, 2275.861 feet to the section corner common to Sections 8, 9, 16 and 17, Township 8 South, Range 13 East;

thence proceed North 89 degrees 57 minutes 57 seconds West, 282.482 feet to a point on the eastern right of way of Hwy 434;



## EXHIBIT "A" CONTINUED

thence following the eastern right of way of Hwy 434 proceed South 31 degrees 5 minutes 7 seconds West, 1536.767 feet;  
thence leaving the eastern right of way of Hwy 434 proceed North 88 degrees 40 minutes 41 seconds East, 1095.478 feet;  
thence proceed South 0 degrees 50 minutes 23 seconds East, 1383.638 feet;  
thence proceed North 88 degrees 35 minutes 35 seconds East, 1028.983 feet;  
thence proceed South 1 degrees 19 minutes 46 seconds East, 2593.03 feet;  
thence proceed South 89 degrees 27 minutes 50 seconds West, 1050.084 feet to the Point of Beginning.