

ST. TAMMANY PARISH COUNCIL

ORDINANCE

ORDINANCE CALENDAR NO. 2967 ORDINANCE COUNCIL SERIES NO. 04-

SPONSORED BY: BRISTER/PRESIDENT PROVIDED BY: ENGINEERING

INTRODUCED BY: MR. BAGERT SECONDED BY: MR. IMPASTATO

ON THE 4TH DAY OF NOVEMBER, 2004

AN ORDINANCE TO IMPOSE A SIX (6) MONTH MORATORIUM ON THE ISSUANCE OF PERMITS FOR THE CONSTRUCTION OR PLACEMENT OF BUILDING STRUCTURES ON PROPERTY WITHIN A PORTION OF PINEVIEW HEIGHTS SUBDIVISION AND SURROUNDING AREA. (WARD 4, DISTRICT 5).

WHEREAS, to protect and preserve the health, safety and property interests of residents within Pineview Heights Subdivision and surrounding areas, Ward 4, District 5 of St. Tammany Parish, a temporary building moratorium is necessary to allow sufficient time for evaluation and acquisition of right of way for the Highway 1088 and I-12 Interchange affecting the area more fully described within this ordinance.

THE PARISH OF ST. TAMMANY HEREBY ORDAINS that it imposes a six (6) month moratorium on the issuance of permits for the construction or placement of building structures on property within a portion of Pineview Heights Subdivision and surrounding area in Ward 4, District 5, described as follows:

All that property within a portion of Pineview Heights Subdivision comprising any and all squares and lots of record therein, located within Section 32, Township 7 South, Range 12 East and as more fully described on the finalized subdivision plat dated November 12, 1958. All as indicated on the plat attached hereto;

All property located within the required right of way of the Louisiana 1088 Interchange Route I-12, as shown on attached drawings from N-Y Associates, Inc., dated September 11, 2000.

BE IT FURTHER ORDAINED that the moratorium herein imposed may be vacated, in whole or in part, by Resolution of this governing body pursuant to Chapter 5, Article II, Section 5-056.00 of the Parish Code of Ordinances.

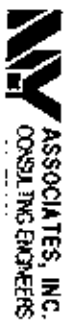
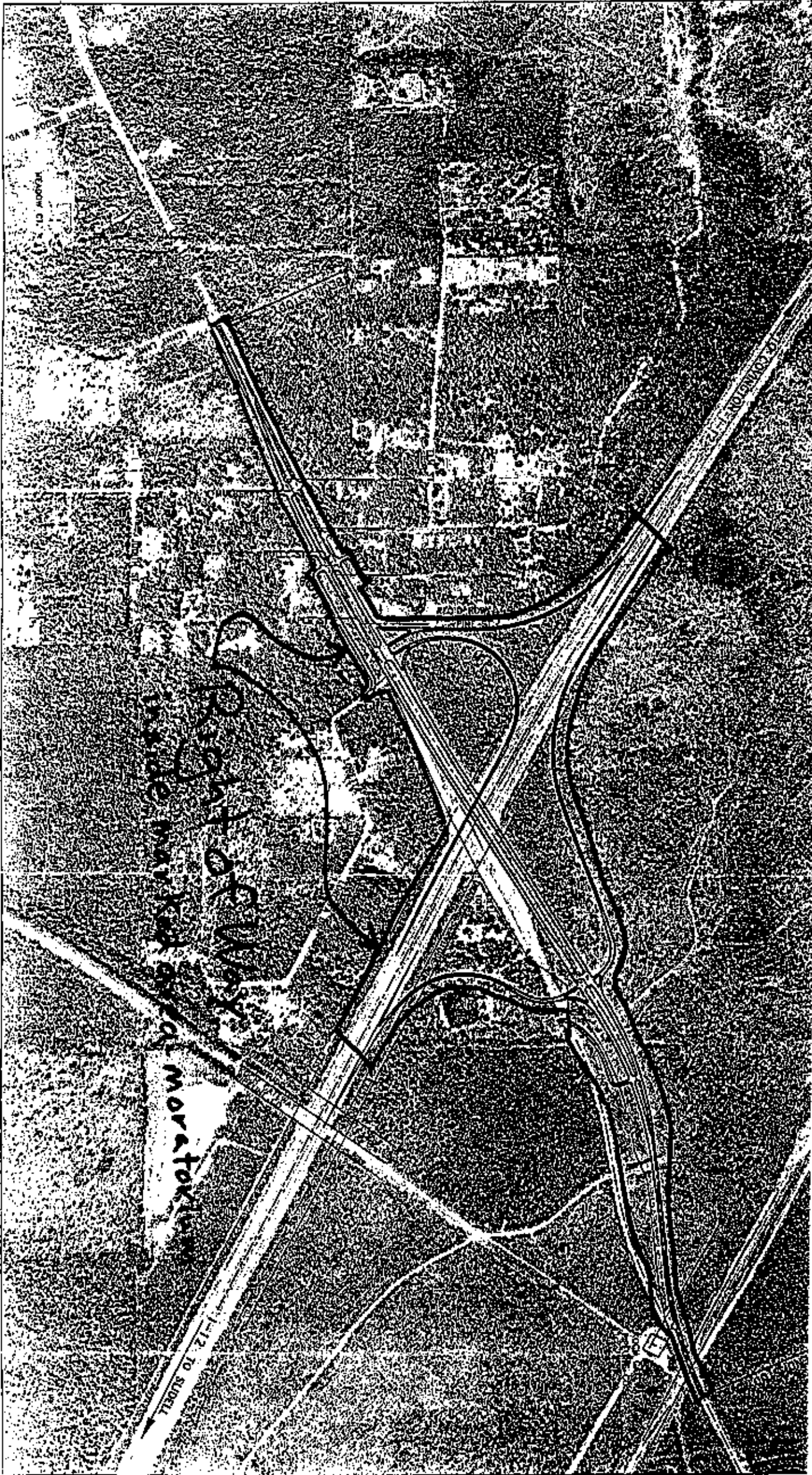
REPEAL: All Ordinances or parts of Ordinances in conflict herewith are hereby repealed.

SEVERABILITY: If any provision of this Ordinance shall be held to be invalid, such invalidity shall not affect other provisions herein which can be given effect without the invalid provision and to this end the provisions of this Ordinance are hereby declared to be severable.

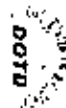
DATE OF ENACTMENT: This Ordinance shall become effective immediately upon adoption.

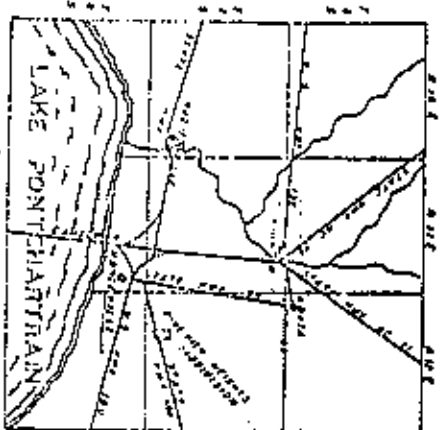
WHEREUPON THIS ORDINANCE WAS SUBMITTED TO A VOTE AND RESULTED IN THE FOLLOWING:

N
4



LA 1088 INTERCHANGE
ROUTE 1-19



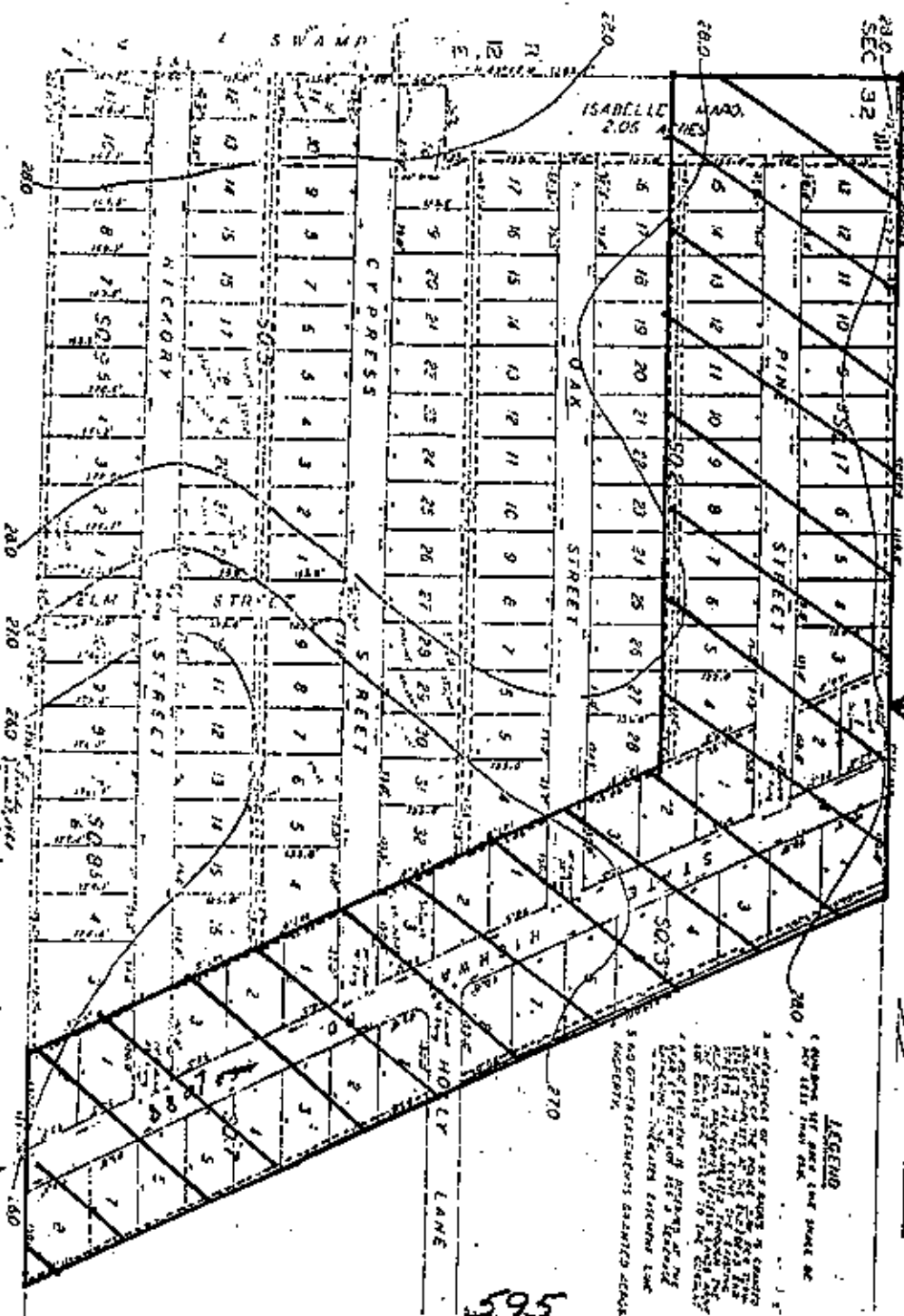


PLAT OF
PINEVIEW HEIGHTS
 SUBDIVISION

LOCATED IN THE EAST HALF OF THE
 SOUTHWEST QUARTER OF SECTION 32
 TOWNSHIP 7 SOUTH, RANGE 12 EAST,
 31 PARISH OF EASTERN LOUISIANA.
 L. P. SMITH
 DEVELOPER
 CUREY BY [Signature]
 NOVEMBER 18, 1958
 COMMISSION LA

SCALE 1"=100'

Moratorium Area I
 also see N-Y Associates
 right of way drawings 1175



LEGEND
 1. BOUNDARIES OF A LOT OR LOTS TO BE SAVED OR
 2. BOUNDARIES OF A LOT OR LOTS TO BE SAVED OR
 3. BOUNDARIES OF A LOT OR LOTS TO BE SAVED OR
 4. BOUNDARIES OF A LOT OR LOTS TO BE SAVED OR
 5. BOUNDARIES OF A LOT OR LOTS TO BE SAVED OR
 6. BOUNDARIES OF A LOT OR LOTS TO BE SAVED OR
 7. BOUNDARIES OF A LOT OR LOTS TO BE SAVED OR
 8. BOUNDARIES OF A LOT OR LOTS TO BE SAVED OR
 9. BOUNDARIES OF A LOT OR LOTS TO BE SAVED OR
 10. BOUNDARIES OF A LOT OR LOTS TO BE SAVED OR
 11. BOUNDARIES OF A LOT OR LOTS TO BE SAVED OR
 12. BOUNDARIES OF A LOT OR LOTS TO BE SAVED OR
 13. BOUNDARIES OF A LOT OR LOTS TO BE SAVED OR
 14. BOUNDARIES OF A LOT OR LOTS TO BE SAVED OR
 15. BOUNDARIES OF A LOT OR LOTS TO BE SAVED OR
 16. BOUNDARIES OF A LOT OR LOTS TO BE SAVED OR
 17. BOUNDARIES OF A LOT OR LOTS TO BE SAVED OR
 18. BOUNDARIES OF A LOT OR LOTS TO BE SAVED OR
 19. BOUNDARIES OF A LOT OR LOTS TO BE SAVED OR
 20. BOUNDARIES OF A LOT OR LOTS TO BE SAVED OR
 21. BOUNDARIES OF A LOT OR LOTS TO BE SAVED OR
 22. BOUNDARIES OF A LOT OR LOTS TO BE SAVED OR
 23. BOUNDARIES OF A LOT OR LOTS TO BE SAVED OR
 24. BOUNDARIES OF A LOT OR LOTS TO BE SAVED OR
 25. BOUNDARIES OF A LOT OR LOTS TO BE SAVED OR
 26. BOUNDARIES OF A LOT OR LOTS TO BE SAVED OR
 27. BOUNDARIES OF A LOT OR LOTS TO BE SAVED OR
 28. BOUNDARIES OF A LOT OR LOTS TO BE SAVED OR
 29. BOUNDARIES OF A LOT OR LOTS TO BE SAVED OR
 30. BOUNDARIES OF A LOT OR LOTS TO BE SAVED OR
 31. BOUNDARIES OF A LOT OR LOTS TO BE SAVED OR
 32. BOUNDARIES OF A LOT OR LOTS TO BE SAVED OR

595