

ST. TAMMANY PARISH COUNCIL

ORDINANCE

ORDINANCE CALENDAR NO. 2938 ORDINANCE COUNCIL SERIES NO. _____

COUNCIL SPONSOR BRISTER/PRESIDENT PROVIDED BY: PLANNING

INTRODUCED BY: MR. STEFANCIK SECONDED BY: MR. GOULD

ON THE 7TH DAY OF OCTOBER, 2004

An Ordinance amending the official zoning map of St. Tammany Parish, La, to reclassify a certain parcel located on the northwest corner of Lowe Davis Road and Plantation Street and which property comprises a total of 15.29 acres of land more or less, from its present SA (Suburban Agriculture) District to an A-2 (Suburban) District, Ward 3, District 3. (ZC04-09-069)

Whereas, the Zoning Commission of the Parish of St. Tammany after hearing in accordance with law, Case No. ZC04-09-069, has recommended to the Council of the Parish of St. Tammany, Louisiana, that the zoning classification of the above referenced area be changed from its present SA (Suburban Agriculture) District to an A-2 (Suburban) District (see Exhibit "A") for complete boundaries.

Whereas, the St. Tammany Parish Council has held its public hearing in accordance with law:

Whereas, the St. Tammany Parish Council has found it necessary for the purpose of protecting the public health, safety and general welfare, to designate the above described property as A-2 (Suburban) District.

THE PARISH OF ST. TAMMANY HEREBY ORDAINS, in regular session convened that:

SECTION I: The zoning classification of the above described property is hereby changed from its present SA (Suburban Agriculture) District to an A-2 (Suburban) District.

SECTION II: The official zoning map of the Parish of St. Tammany shall be and is hereby amended to incorporate the zoning reclassification specified in Section I hereof.

REPEAL: All Ordinances or parts of Ordinances in conflict herewith are hereby repealed.

SEVERABILITY: If any provision of this Ordinance shall be held to be invalid, such invalidity shall not affect other provisions herein which can be given effect without the invalid provision and to this end the provisions of this Ordinance are hereby declared to be severable.

EFFECTIVE DATE: This Ordinance shall become effective fifteen (15) days after adoption.

MOVED FOR ADOPTION BY: _____, SECONDED BY: _____

WHEREUPON THIS ORDINANCE WAS SUBMITTED TO A VOTE AND RESULTED IN THE FOLLOWING:

YEAS:

NAYS:

ABSTAIN:

ABSENT:

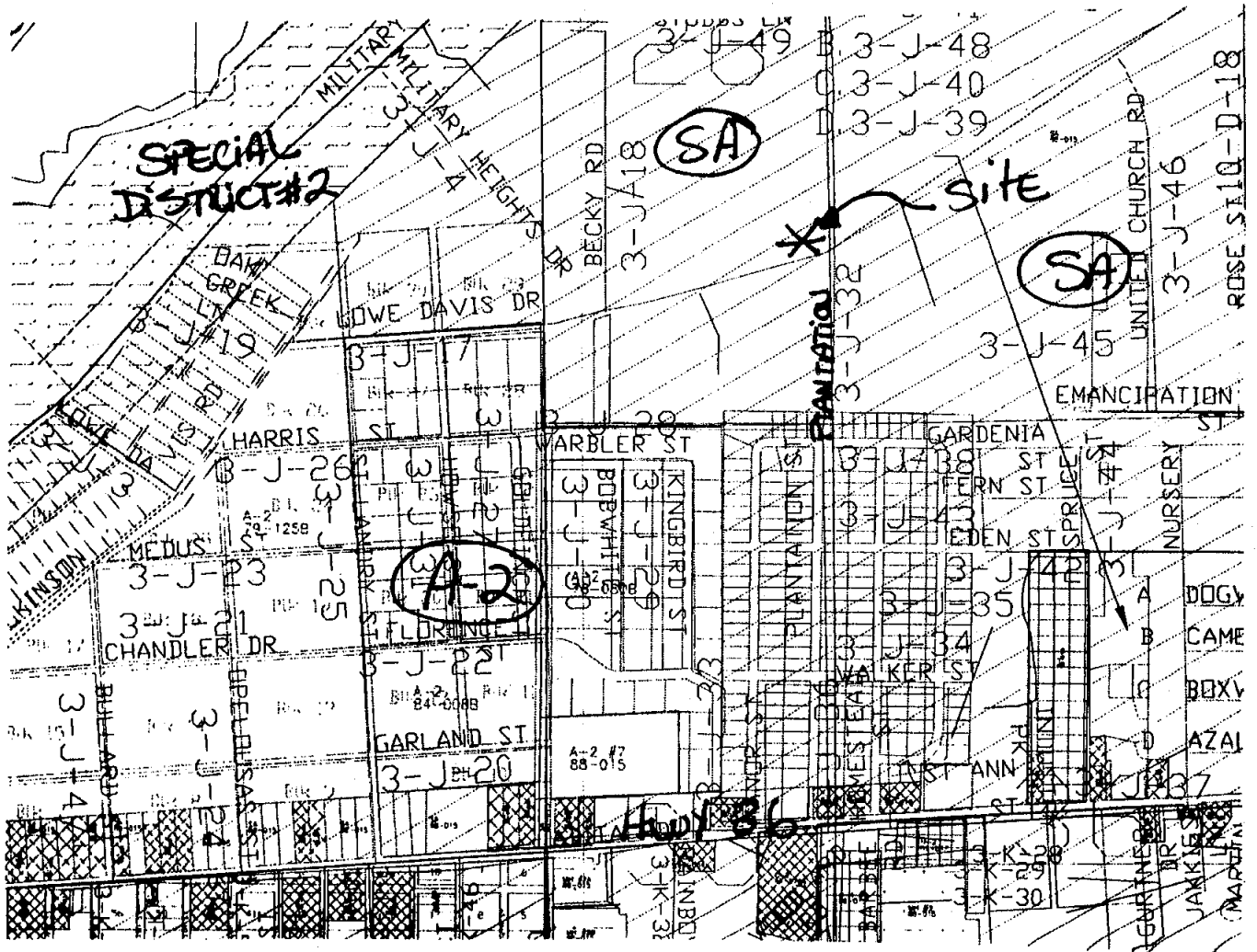
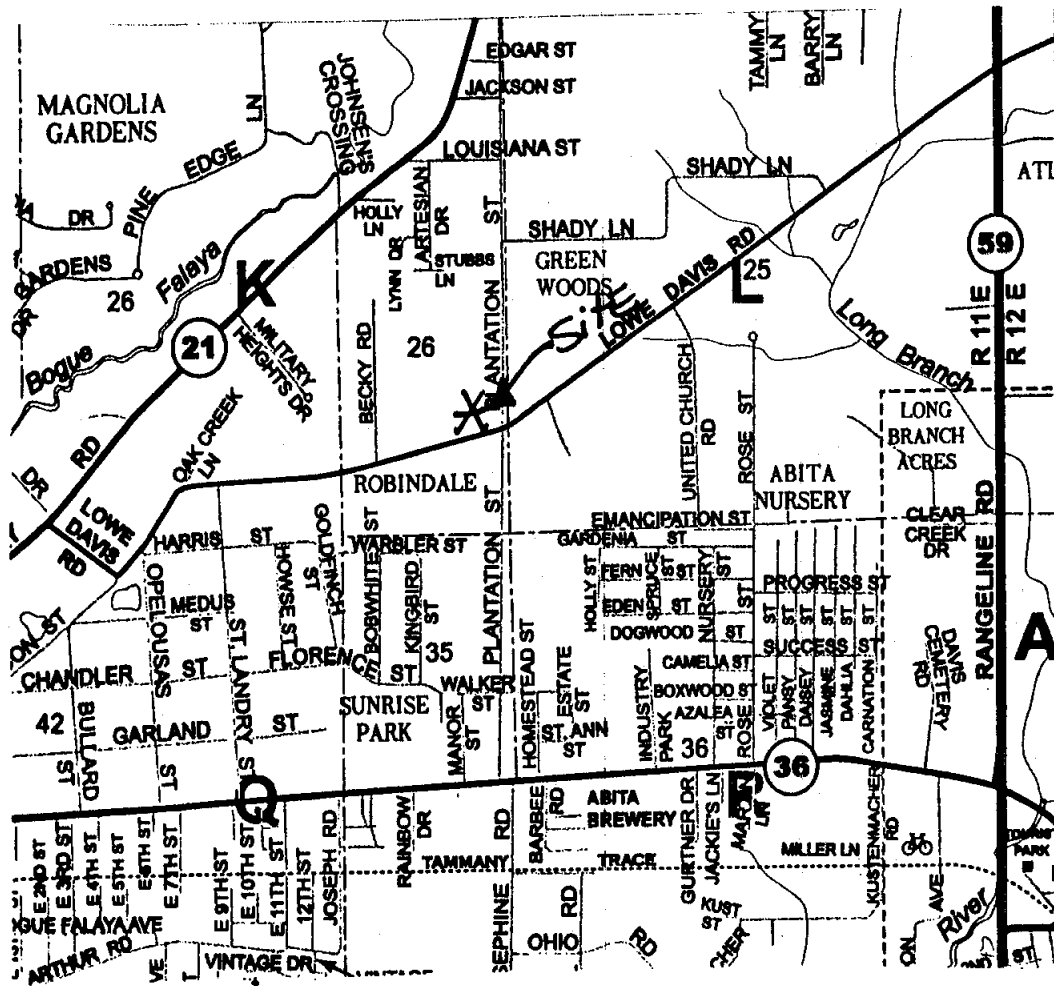
ZC04-09-069

A CERTAIN PIECE OR PORTION OF LAND SITUATED IN SECTION 26, TOWNSHIP 6 SOUTH, RANGE 11 EAST, ST. TAMMANY PARISH, LOUISIANA BEING MORE FULLY DESCRIBED AS FOLLOWS:

COMMENCING FROM THE SECTION CORNER COMMON TO SECTIONS 25,26,35 & 36, TOWNSHIP 6 SOUTH, RANGE 11 EAST, AND RUN NORTH 00 DEGREES 09 MINUTES 00 SECONDS EAST FOR A DISTANCE OF 1022.00 FEET TO A POINT; THENCE RUN NORTH 84 DEGREES 51 MINUTES 00 SECONDS WEST FOR A DISTANCE OF 130.53 FEET TO A FOUND 3/4" IRON PIPE ALSO BEING THE POINT OF BEGINNING; THENCE FROM THE POINT OF BEGINNING RUN NORTH 74 DEGREES 15 MINUTES 22 SECONDS EAST FOR A DISTANCE OF 137.16 FEET A SET 1/2" IRON ROD; THENCE RUN NORTH 00 DEGREES 10 MINUTES 31 SECONDS EAST FOR A DISTANCE OF 553.52 FEET TO A FOUND 3/4" IRON PIPE; THENCE RUN NORTH 88 DEGREES 15 MINUTES 00 SECONDS WEST FOR A DISTANCE OF 992.97 FEET TO A FOUND 3/4" IRON PIPE; THENCE RUN SOUTH 00 DEGREES 20 MINUTES 57 SECONDS EAST FOR A DISTANCE OF 826.43 FEET TO A FOUND 3/4" IRON PIPE; THENCE RUN NORTH 72 DEGREES 14 MINUTES 14 SECONDS EAST FOR A DISTANCE OF 611.09 FEET TO A FOUND 3/4" IRON PIPE; THENCE RUN NORTH 86 DEGREES 03 MINUTES 58 SECONDS EAST FOR A DISTANCE OF 275.84 FEET BACK TO THE POINT OF BEGINNING;

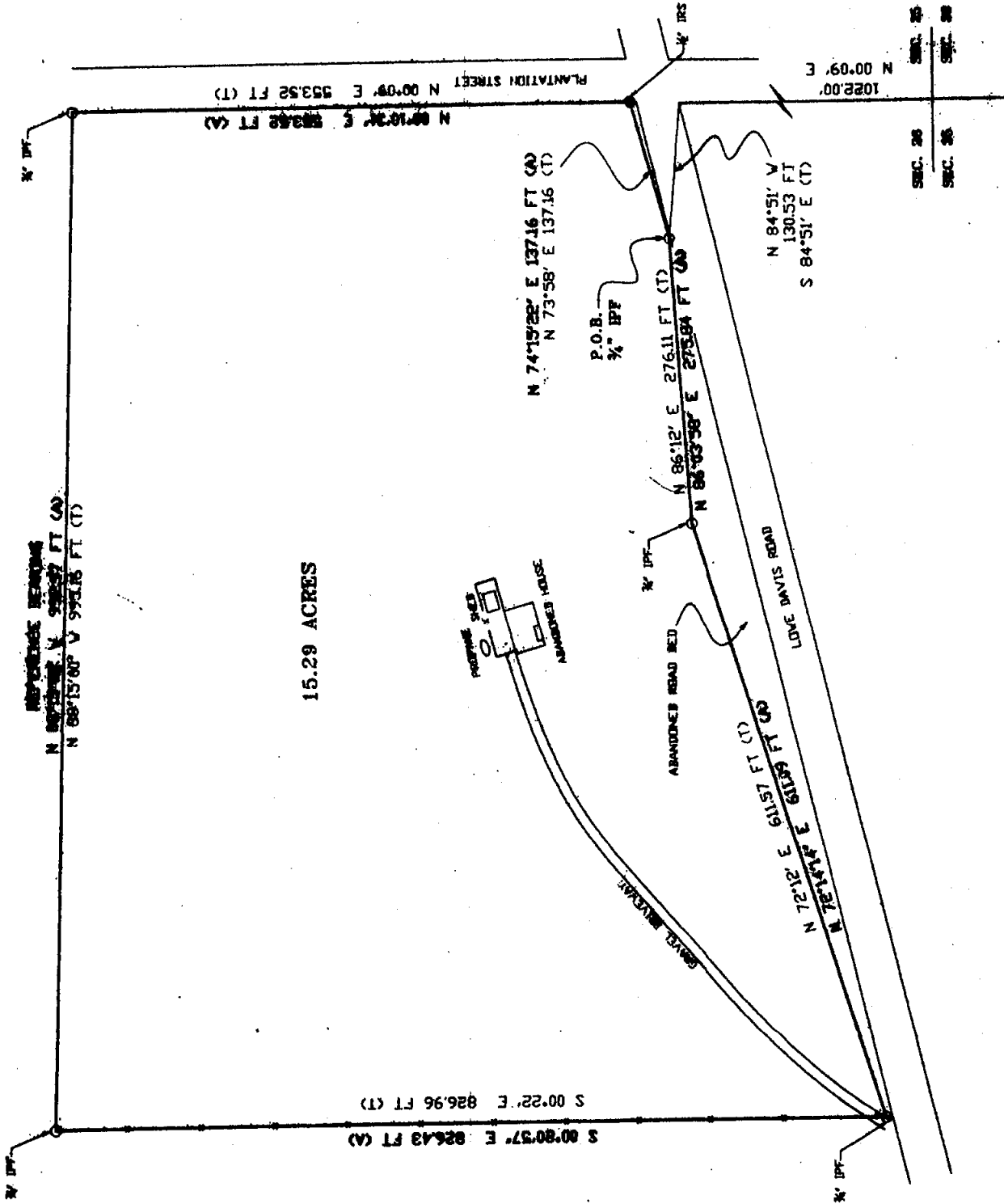
SAID TRACT OF LAND CONTAINS 15.29 ACRES MORE OF LESS.

CASE NO.: ZC04-09-069 2938
PETITIONER: Donald Wilson
OWNER: Lowe Davis Investments, L.L.C.
REQUESTED CHANGE: From SA (Suburban Agriculture) District to A-2 (Suburban) District
LOCATION: Parcel located on the northwest corner of Lowe Davis Road and Plantation Street; S26, T6S, R11E; Ward 3, District 3
SIZE: 15.29 acres



2938

LAND OFFICE OF ORLEANS PARISH, LOUISIANA
ST. TAMMANY PARISH, LOUISIANA



15.29 ACRES

2004 305	Sheet No.	1 of 1
1" = 80'	Date:	
by:	Drawn:	

SURVEY MAP OF A 15.29 ACRE PARCEL
LOCATED IN SECTION 20, T-6-S, R-11-E
ST. TAMMANY PARISH, LOUISIANA
FOR
SIS INVESTMENTS, L.L.C.

2004-09-069