

ST. TAMMANY PARISH COUNCIL

ORDINANCE

ORDINANCE CALENDAR NO. 3102 ORDINANCE COUNCIL SERIES NO. _____
COUNCIL SPONSOR MS. BRISTER PROVIDED BY: PLANNING
INTRODUCED BY: MS. BRISTER SECONDED BY: MR. GOULD
ON THE 2ND DAY OF JUNE 2005

An Ordinance amending the official zoning map of St. Tammany Parish, La, to reclassify a certain parcel located on the northwest corner of US Highway 190 Service Road & Fountainbleau Drive, being parcel 38, Beau Chene Subdivision and which property comprises a total of 2.62 acres of land more or less, from its present LC (Light Commercial) District to a C-1 (Neighborhood Commercial) District, Ward 4, District 4. (ZC05-05-034)

Whereas, the Zoning Commission of the Parish of St. Tammany after hearing in accordance with law, Case No. ZC05-05-034, has recommended to the Council of the Parish of St. Tammany, Louisiana, that the zoning classification of the above referenced area be changed from its present LC (Light Commercial) District to a C-1 (Neighborhood Commercial) District (see Exhibit "A") for complete boundaries; and

Whereas, the St. Tammany Parish Council has held its public hearing in accordance with law; and

Whereas, the St. Tammany Parish Council has found it necessary for the purpose of protecting the public health, safety and general welfare, to designate the above described property as C-1 (Neighborhood Commercial) District.

THE PARISH OF ST. TAMMANY HEREBY ORDAINS, in regular session convened that:

SECTION I: The zoning classification of the above described property is hereby changed from its present LC (Light Commercial) District to a C-1 (Neighborhood Commercial) District.

SECTION II: The official zoning map of the Parish of St. Tammany shall be and is hereby amended to incorporate the zoning reclassification specified in Section I hereof.

REPEAL: All Ordinances or parts of Ordinances in conflict herewith are hereby repealed.

SEVERABILITY: If any provision of this Ordinance shall be held to be invalid, such invalidity shall not affect other provisions herein which can be given effect without the invalid provision and to this end the provisions of this Ordinance are hereby declared to be severable.

EFFECTIVE DATE: This Ordinance shall become effective fifteen (15) days after adoption.

MOVED FOR ADOPTION BY: _____, SECONDED BY: _____

WHEREUPON THIS ORDINANCE WAS SUBMITTED TO A VOTE AND RESULTED IN THE FOLLOWING:

- YEAS:
- NAYS:
- ABSTAIN:
- ABSENT:

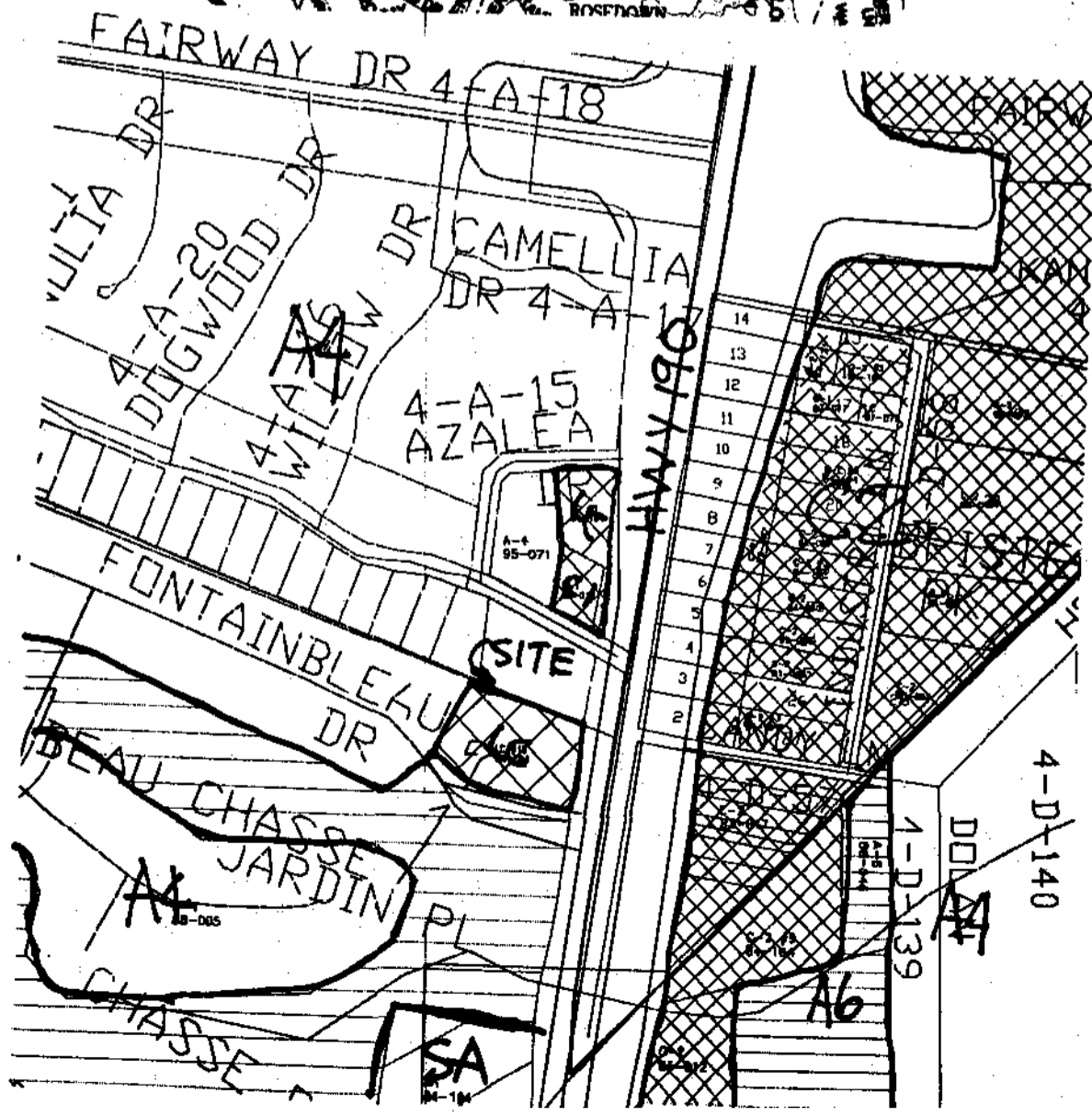
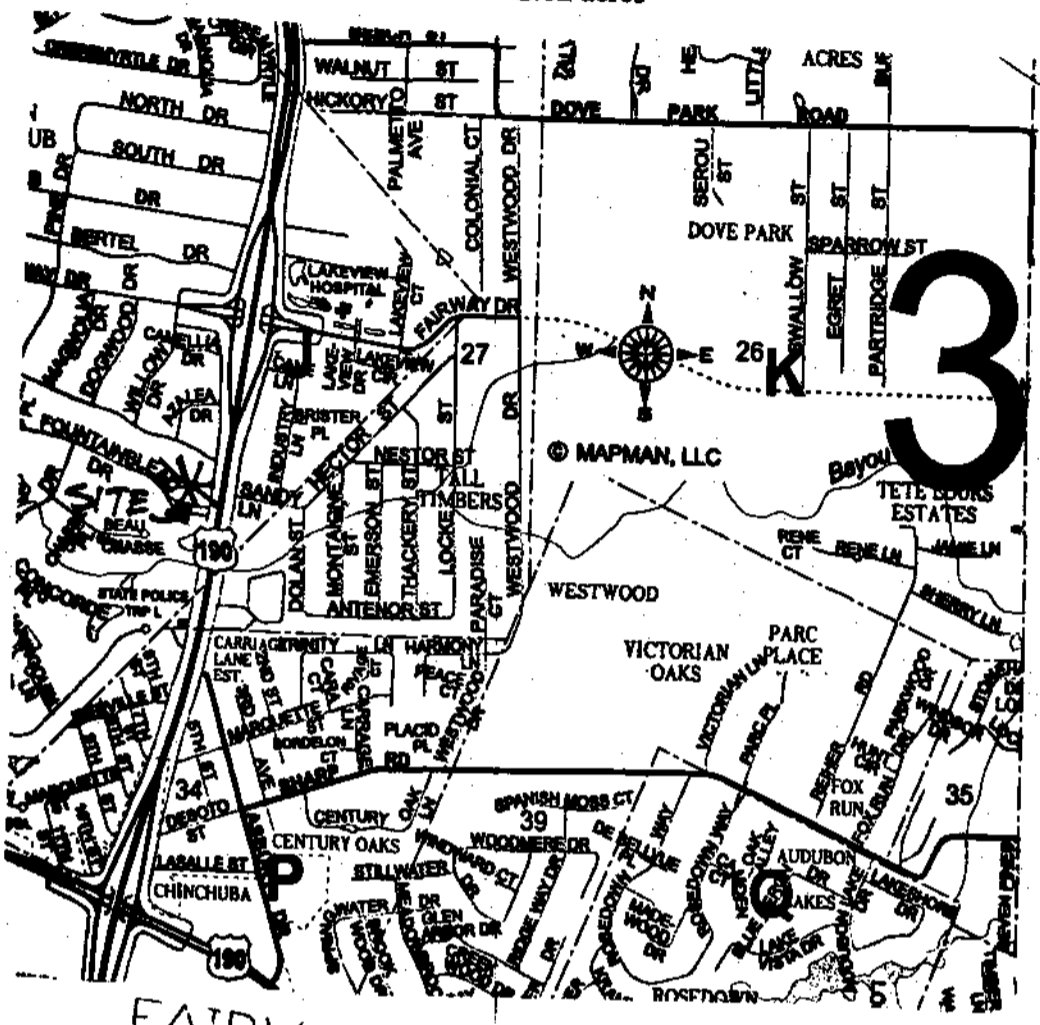
EXHIBIT "A"

ZC05-05-034

THAT CERTAIN PORTION OF GROUND, together with all the buildings and improvements thereon, and all the rights, ways, privileges, servitudes, advantages and appurtenances thereunto belonging or in anywise appertaining, situated in the Parish of St. Tammany, State of Louisiana, in Beau Chene Subdivision, in the subdivision of Section 4 & Part of Section 3 Plan - Road & Lot Geometry, Phase 3, and designated thereon as Parcel 38 as shown on the plan of Subdivision by Waldemar S. Nelson and Company, Inc., Engineers and Architects, dated December 15, 1987, which subdivision plan was filed for record with the Clerk of Court for St. Tammany Parish, Louisiana on January 19, 1989 in Map File #1002-B, said Parcel 38 having the location and dimensions as set forth on the said Plan of Subdivision.

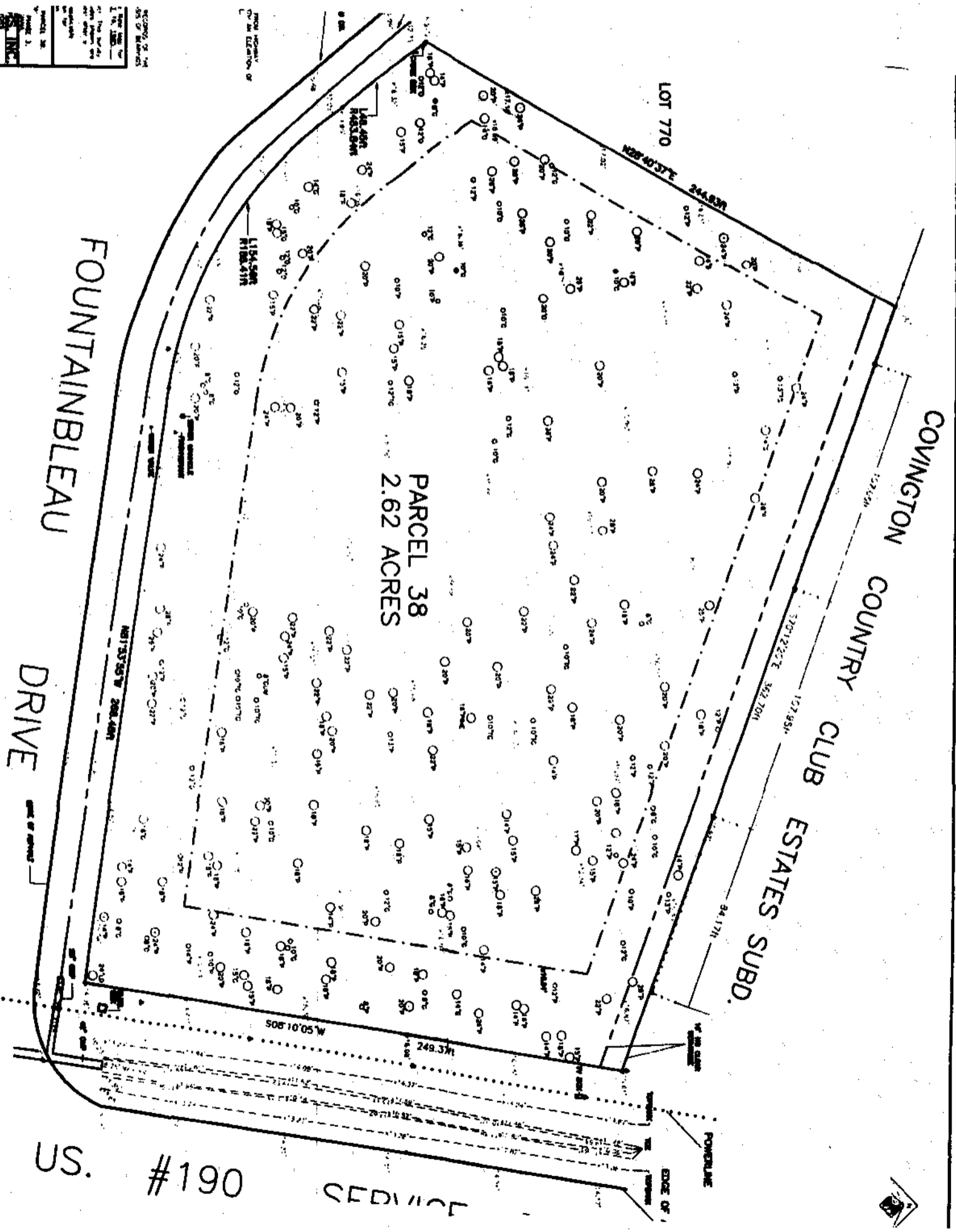
Being a portion of the same property acquired by Beau Chene, Inc. from Sara Paillet, Et Als by act dated August 22, 1983 and recorded COB 1115, folio 239. Beau Chene, Inc. and Earnest Homes, Inc. were merged into The Earnest Corporation by merger effective August 1, 1984 and recorded Miscellaneous Book 54, folio 576 and COB 1166, folio 626, all of the official records of St. Tammany Parish, Louisiana.

CASE NO.: ZC05-05-034
PETITIONER: Christopher C. Inman
OWNER: East Gates Commercial, L.L.C.
REQUESTED CHANGE: From LC (Light Commercial) District to C-1 (Neighborhood Commercial) District
LOCATION: Parcel located on the northwest corner of US Highway 190 Service Road & Fountainbleau Drive, being parcel 38, Beau Chene Subdivision; S37, T7S, R11E; Ward 4, District 4
SIZE: 2.62 acres



2005-05-034

RECORDS OF THE
COUNTY OF
DELAWARE
PLAT NO. 1154-588
DATE 05/03/05



PARCEL 38
2.62 ACRES

FOUNTAINBLEAU DRIVE

COVINGTON COUNTRY CLUB ESTATES SUBD.

US. #190

SERVICE