

ST. TAMMANY PARISH COUNCIL

ORDINANCE

ORDINANCE CALENDAR NO. 3219 ORDINANCE COUNCIL SERIES NO. _____

COUNCIL SPONSOR STEFANCIK/DAVIS PROVIDED BY: PLANNING

INTRODUCED BY: _____ SECONDED BY: _____

ON THE _____ DAY OF _____, 2006

An Ordinance amending the official zoning map of St. Tammany Parish, La, to reclassify a certain parcel located on the south side of I-12, north of Old Todd Road and which property comprises a total of 59.37 acres of land more or less, from its present C-1 (Neighborhood Commercial) District to an A-4 (Single Family Residential) District, Ward 9 & 7, District 7. (ZC06-01-003)

Whereas, the Zoning Commission of the Parish of St. Tammany after hearing in accordance with law, Case No. ZC06-01-003, has recommended to the Council of the Parish of St. Tammany, Louisiana, that the zoning classification of the above referenced area be changed from its present C-1 (Neighborhood Commercial) District to an A-4 (Single Family Residential) District (see Exhibit "A") for complete boundaries.

Whereas, the St. Tammany Parish Council has held its public hearing in accordance with law:

Whereas, the St. Tammany Parish Council has found it necessary for the purpose of protecting the public health, safety and general welfare, to designate the above described property as A-4 (Single Family Residential) District.

THE PARISH OF ST. TAMMANY HEREBY ORDAINS, in regular session convened that:

SECTION I: The zoning classification of the above described property is hereby changed from its present C-1 (Neighborhood Commercial) District to an A-4 (Single Family Residential) District.

SECTION II: The official zoning map of the Parish of St. Tammany shall be and is hereby amended to incorporate the zoning reclassification specified in Section I hereof.

REPEAL: All Ordinances or parts of Ordinances in conflict herewith are hereby repealed.

SEVERABILITY: If any provision of this Ordinance shall be held to be invalid, such invalidity shall not affect other provisions herein which can be given effect without the invalid provision and to this end the provisions of this Ordinance are hereby declared to be severable.

EFFECTIVE DATE: This Ordinance shall become effective fifteen (15) days after adoption.

MOVED FOR ADOPTION BY: _____, SECONDED BY: _____

WHEREUPON THIS ORDINANCE WAS SUBMITTED TO A VOTE AND RESULTED IN THE FOLLOWING:

YEAS:

NAYS:

ABSTAIN:

ABSENT:

ZC06-01-003

Located in Sections 22 and 27 Township 8 South, Range 13 East, St. Tammany Parish, Louisiana.

From the Section Corner common to Sections 21, 22, 27 & 28 Township 8 South, Range 13 East, St. Tammany Parish, Louisiana run North 00 degrees 10 minutes 47 seconds East, 1805.89 feet to the Point of Beginning.

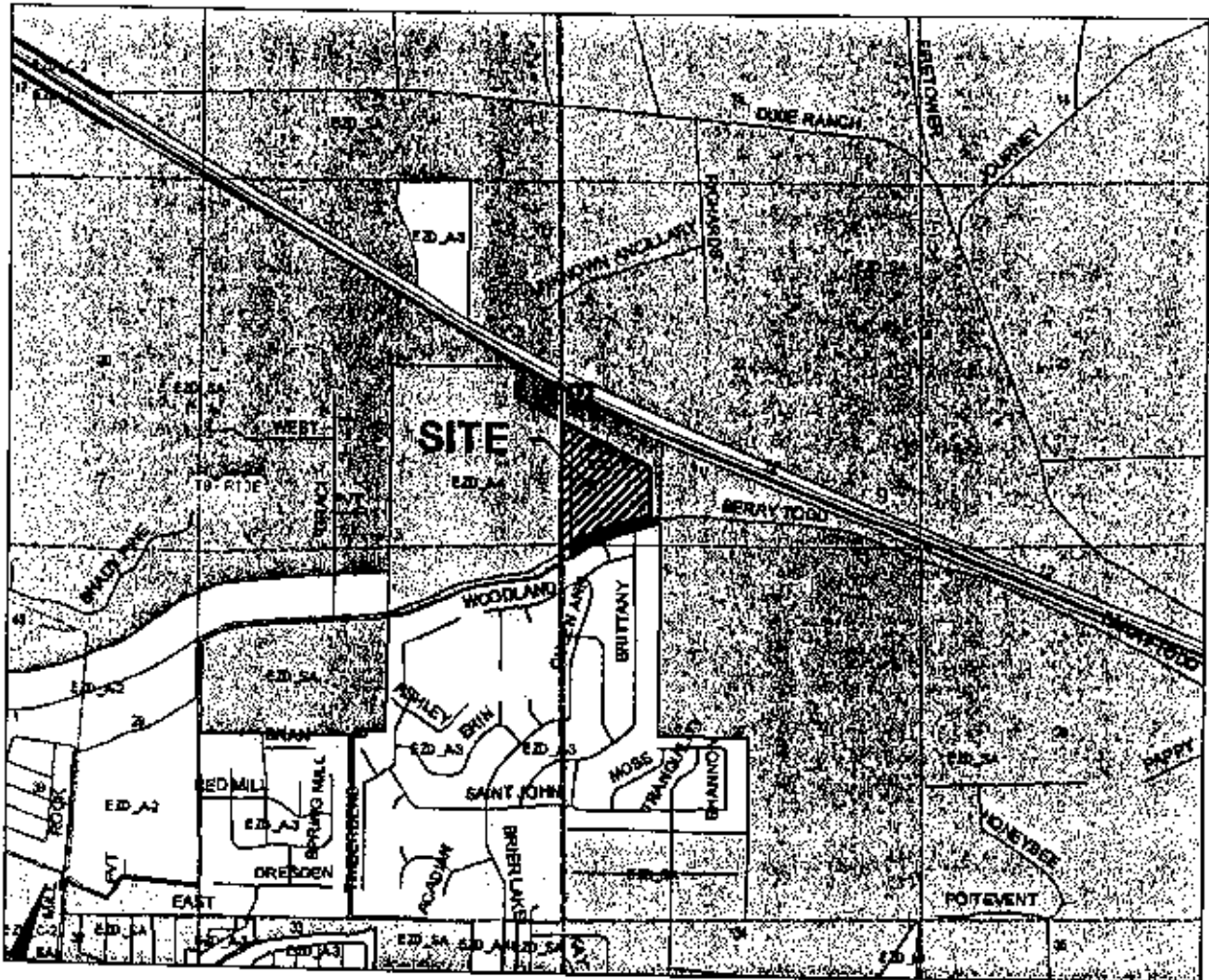
From the Point of Beginning run North 63 degrees 14 minutes 40 seconds West, 930.59 feet to a point; thence North 00 degrees 11 minutes 21 seconds East, 447.22 feet to a point; thence South 63 degrees 14 minutes 40 seconds East, 2406.19 feet to a point; thence South 00 degrees 47 minutes 28 seconds West, 258.85 feet to a point; thence North 63 degrees 14 minutes 40 seconds West, 1471.34 feet back to the Point of Beginning.

Located in Sections 22 and 27 Township 8 South, Range 13 East, St. Tammany Parish, Louisiana.

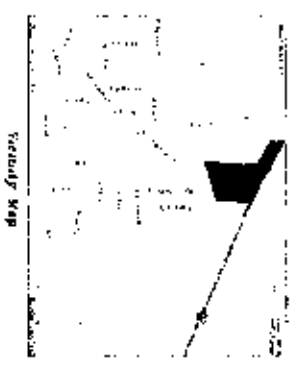
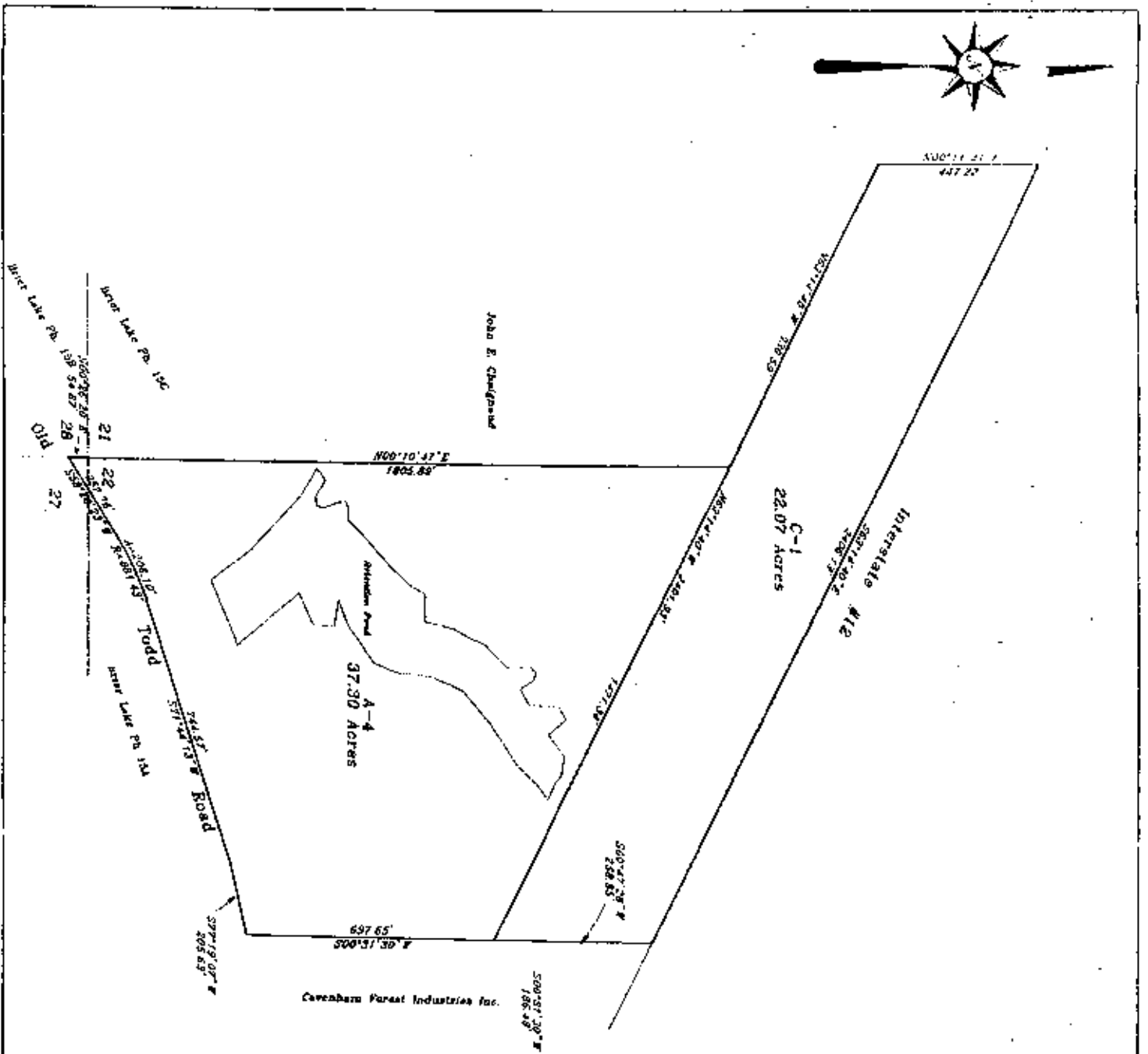
From the Section Corner common to Sections 21, 22, 27 & 28 Township 8 South, Range 13 East, St. Tammany Parish, Louisiana this being the Point of Beginning.

From the Point of Beginning run North 00 degrees 10 minutes 47 seconds East, 1805.89 feet to a point; thence South 63 degrees 14 minutes 40 seconds East, 1471.34 feet to a point; thence South 00 degrees 31 minutes 30 seconds West, 697.65 feet to a point; thence South 77 degrees 19 minutes 07 seconds West, 205.63 feet to a point; thence South 71 degrees 44 minutes 13 seconds West, 744.57 feet to a point; thence with a curve to the left having a Radius of 881.43 feet and an Arc of 206.10 feet to a point; thence South 58 degrees 20 minutes 23 seconds West, 257.76 feet to a point; thence North 00 degrees 26 minutes 20 seconds East, 54.67 feet back to the Point of Beginning.

CASE NO.: ZC06-01-003 3219
PETITIONER: Leroy Cooper
OWNER: Chaignaud Developers, INC.
REQUESTED CHANGE: From C-1 (Neighborhood Commercial) District to A-4 (Single Family Residential) District
LOCATION: Parcel located on the south side of I-12, north of Old Todd Road;
 S21, 22 & 27, T8S, R13E; Ward 9 & 7, District 7
SIZE: 59.37 acres



ZC06-01-003 3219



SEPARATE SURVEY HEREON (IF ANY) ARE NOT NECESSARILY
 SECURATIVE STIPULATIONS AS TO THE ACCURACY OF THIS
 SURVEY. THE POLICY WILL BE AIDED HEREON UNDER
 REQUEST AS THE UNDERSIGNED HAS PERFORMED NO ABSTRACT
 OR TITLE SEARCH. THE UNDERSIGNED HAS MADE NO ATTEMPT
 TO LOCATE ANY BURIED UTILITIES OR ASSOCIATED PROBLEMS.

THIS MAP IS IN ACCORDANCE WITH THE MINIMUM STANDARD
 REGULATED REQUIREMENTS PURSUANT TO THE ACCURACY
 STANDARDS OF A D SURVEY AND THE APPLICABLE STANDARDS
 OF PRACTICE CITED IN LAC 48:121.

THIS MAP IS LOCATED IN FLOOD ZONE C 15 PER
 FEMA FIRM COMM. PANEL NO. 220205 0365 C.
 MAP DATED 10-17-1988



LS LAND SURVEYING, INC.	
518 N. COLUMBIA ST. COVINGTON, LA. 70433	
John E. Chaignaud	
Scale 1" = 200'	Date 11-14-2008
Located in Sections 21, 26, 27 Township 8 South, Range 13 East, St. Tammany Parish, Louisiana	
11-543	