

ST. TAMMANY PARISH COUNCIL

ORDINANCE

ORDINANCE CALENDAR NO. 3231 ORDINANCE COUNCIL SERIES NO. 06-

COUNCIL SPONSOR MR. BURKHALTER PROVIDED BY PRESIDENT

INTRODUCED BY MR. BAGERT SECONDED BY MR. BINDER

ON THE 2ND DAY OF FEBRUARY, 2006

ORDINANCE AUTHORIZING THE OFFICE OF THE PARISH PRESIDENT TO ACCEPT THE DEDICATION & DONATION OF APPROXIMATELY 11 ACRES BY LULICH STEEL CORPORATION, WARD 9, DISTRICT 14, AS SHOWN IN EXHIBITS "A" & "B" ATTACHED HERETO.

WHEREAS, the St. Tammany Parish Government is charged with protecting the safety and welfare of the citizens of the parish; and

WHEREAS, there is a need and purpose to enter into this Agreement in order to enhance the quality of life in this parish and for other recreational purposes; and

WHEREAS, it is the desire of St. Tammany Parish Government to accept this donation from Lulich Steel Corporation.

THE PARISH OF ST. TAMMANY HEREBY authorizes the Office of the Parish President to accept the Dedication & Donation of approximately 11 acres by Lulich Steel Corporation, Ward 9, District 14. (As shown in Exhibits "A" and "B" attached hereto.)

REPEAL: All Ordinances or parts of Ordinances in conflict herewith are hereby repealed.

SEVERABILITY: If any provision of this Ordinance shall be held to be invalid, such invalidity shall not affect other provisions herein which can be given effect without the invalid provision and to this end the provisions of this Ordinance are hereby declared to be severable.

EFFECTIVE DATE: This Ordinance shall become effective fifteen (15) days after adoption.

MOVED FOR ADOPTION BY: _____, SECONDED BY: _____

WHEREUPON THIS ORDINANCE WAS SUBMITTED TO A VOTE AND RESULTED IN THE FOLLOWING:

YEAS:

NAYS:

ABSTAIN:

ABSENT:

ERIC

"A"

FAVALORA

BRYAN JONES
HALE

COOPER

BEN THOMAS

33

STONE

CAMELOT

JAVERY

VINCENT

DONYA

BONFOUCA

190

SYCAMORE

JACKSON 3RD

WILLOW

CARNATION

JACKSON

PINE

ELM

5TH

AVIATOR

MAGNOLIA

CEDAR

SOLDIER

HARRISON

LAGRANGE

BEECHWOOD

CYPRESS

6TH

YAUPON

STRAWBERRY

ADDIS

190

GAUSE

AUDUBON

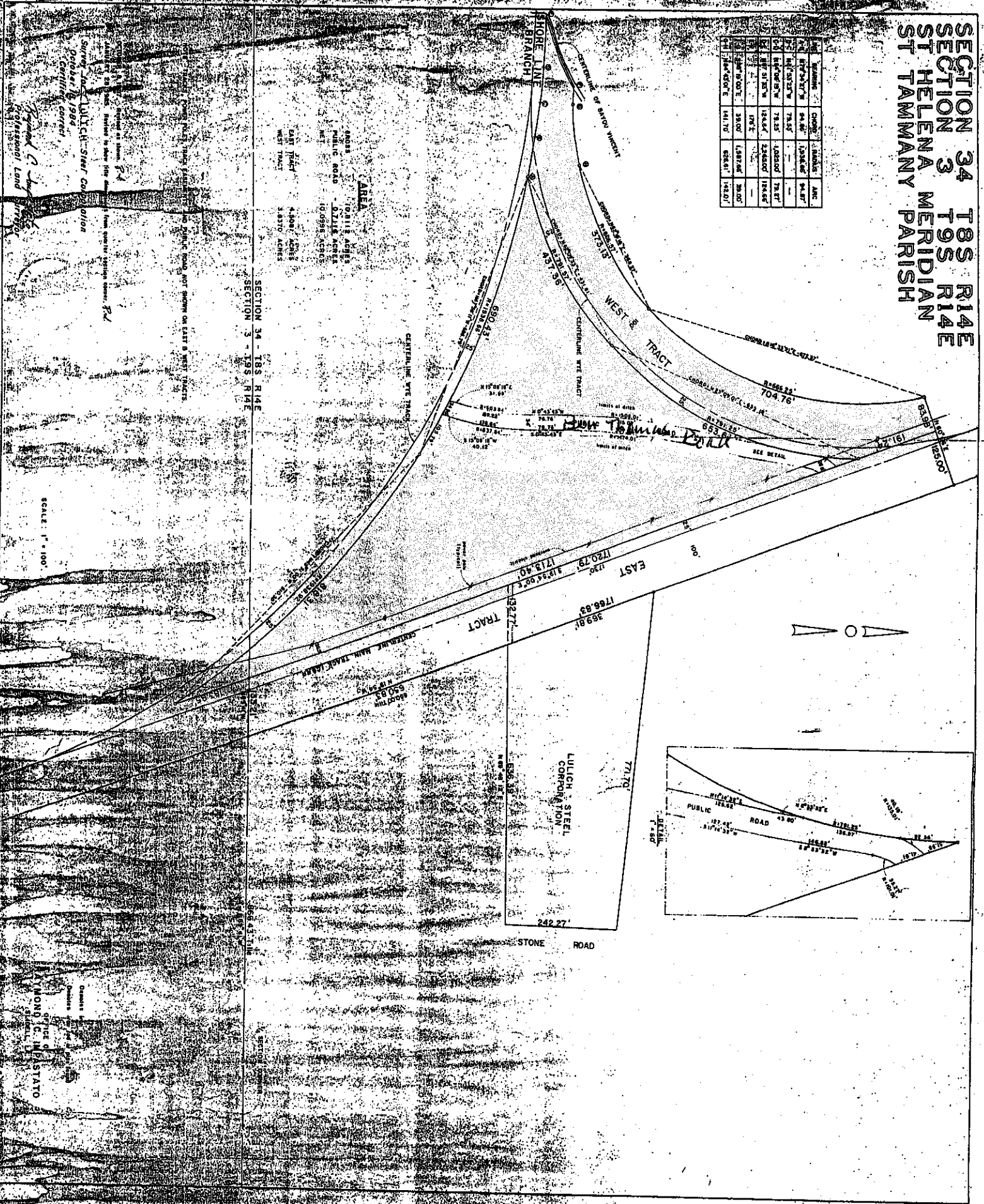
WALNUT

MAPLE

"B"

SECTION 34 T8S R14E
 SECTION 3 T9S R14E
 ST HELENA MERIDIAN
 ST TAMMANY PARISH

LINE	BEARING	CROSS	SECTION	ACR
1	S 84° 27' 30" W	84.87	1388.87	84.87
2	N 73° 52' 30" E	73.52	1052.00	73.52
3	S 84° 27' 30" W	84.87	1388.87	84.87
4	N 73° 52' 30" E	73.52	1052.00	73.52
5	S 84° 27' 30" W	84.87	1388.87	84.87
6	N 73° 52' 30" E	73.52	1052.00	73.52
7	S 84° 27' 30" W	84.87	1388.87	84.87
8	N 73° 52' 30" E	73.52	1052.00	73.52
9	S 84° 27' 30" W	84.87	1388.87	84.87
10	N 73° 52' 30" E	73.52	1052.00	73.52
11	S 84° 27' 30" W	84.87	1388.87	84.87
12	N 73° 52' 30" E	73.52	1052.00	73.52



Surveyed and LULICH STEEL CORPORATION
 Dated: 12/18/1984
 Certified Correct
 Raymond C. Mastaro
 Professional Land Surveyor

SCALE: 1" = 100'

OFFICE OF
 RAYMOND C. MASTARO
 Surveyor