

ST. TAMMANY PARISH COUNCIL

ORDINANCE

ORDINANCE CALENDAR NO. 3251 ORDINANCE COUNCIL SERIES NO. _____

COUNCIL SPONSOR STEFANCIK/DAVIS PROVIDED BY: PLANNING

INTRODUCED BY: MR. BILLIOT SECONDED BY: MR. GOULD

ON THE 6TH DAY OF APRIL, 2006

An Ordinance amending the official zoning map of St. Tammany Parish, La, to reclassify a certain parcel located on the north and east sides of Robert Road, south of Cornibe Henry Road, north of Red Rooster Road and which property comprises a total of 50.71 acres of land more or less, from its present SA (Suburban Agricultural) District to a PUD (Planned Unit Development) District, Ward 8, District 9, (ZC05-12-076)

Whereas, the Zoning Commission of the Parish of St. Tammany after hearing in accordance with law, Case No. ZC05-12-076, has recommended to the Council of the Parish of St. Tammany, Louisiana, that the zoning classification of the above referenced area be changed from its present SA (Suburban Agricultural) District to a PUD (Planned Unit Development) District (see Exhibit "A") for complete boundaries.

Whereas, the St. Tammany Parish Council has held its public hearing in accordance with law:

Whereas, the St. Tammany Parish Council has found it necessary for the purpose of protecting the public health, safety and general welfare, to designate the above described property as PUD (Planned Unit Development) District.

THE PARISH OF ST. TAMMANY HEREBY ORDAINS, in regular session convened that:

SECTION I: The zoning classification of the above described property is hereby changed from its present SA (Suburban Agricultural) District to a PUD (Planned Unit Development) District.

SECTION II: The official zoning map of the Parish of St. Tammany shall be and is hereby amended to incorporate the zoning reclassification specified in Section I hereof.

REPEAL: All Ordinances or parts of Ordinances in conflict herewith are hereby repealed.

SEVERABILITY: If any provision of this Ordinance shall be held to be invalid, such invalidity shall not affect other provisions herein which can be given effect without the invalid provision and to this end the provisions of this Ordinance are hereby declared to be severable.

EFFECTIVE DATE: This Ordinance shall become effective fifteen (15) days after adoption.

MOVED FOR ADOPTION BY: _____, SECONDED BY: _____

WHEREUPON THIS ORDINANCE WAS SUBMITTED TO A VOTE AND RESULTED IN THE FOLLOWING:

YEAS:

NAYS:

ABSTAIN:

ABSENT:

EXHIBIT "A"

3257

ZC05-12-076

A certain parcel of land being the Northeast $\frac{1}{4}$ of the Northwest $\frac{1}{4}$ and in the Southeast $\frac{1}{4}$ of the Northwest $\frac{1}{4}$ and in the Southwest $\frac{1}{4}$ of the Northeast $\frac{1}{4}$ of Section 24, Township 8 South, Range 14 East, Saint Tammany Parish, Louisiana and more fully described as follows.

From the northwest corner of said Southeast $\frac{1}{4}$ of the Northwest $\frac{1}{4}$, Section 24, Township 8 South, Range 14 East, the Point of Beginning, thence go

North - 1309.27 feet to the northwest corner of the northeast $\frac{1}{4}$ of the northwest $\frac{1}{4}$ of Section 24 in said township and range; thence

North 88 Degrees 38 minutes 19 seconds East - 1313.17 feet to the $\frac{1}{4}$ section corner common to Sections 13 & 24 in said township and range; thence

South 00 Degrees 12 minutes 35 seconds East - 1335.54 feet to the southeast corner of said northeast $\frac{1}{4}$ of the northwest $\frac{1}{4}$ of said Section 24; thence

South 89 Degrees 39 minutes 17 seconds East - 223.39 feet to a point; thence

South 01 Degree 43 minutes 35 seconds West - 429.26 feet to a point; thence

North 89 Degrees 39 minutes 13 seconds West - 367.46 feet to a point; thence

South 02 Degrees 34 minutes 04 seconds West - 61.09 feet to a point; thence

South 00 Degrees 09 minutes 35 seconds West - 39.83 feet to a point in the centerline of a creek; thence along the centerline of said creek on the following fourteen courses; thence

South 64 Degrees 17 minutes 46 seconds West - 64.23 feet;

South 24 Degrees 39 minutes 33 seconds West - 84.73 feet;

South 72 Degrees 12 minutes 02 seconds West - 62.70 feet;

North 34 Degrees 46 minutes 30 seconds West - 44.50 feet;

North 62 Degrees 09 minutes 28 seconds West - 53.13 feet;

South 85 Degrees 34 minutes 41 seconds West - 60.24 feet;

North 70 Degrees 55 minutes 26 seconds West - 94.24 feet;

South 77 Degrees 39 minutes 54 seconds West - 22.51 feet;

North 89 Degrees 00 minutes 26 seconds West - 35.65 feet;

North 54 Degrees 02 minutes 46 seconds West - 64.53 feet;

South 86 Degrees 05 minutes 31 seconds West - 15.42 feet;

South 55 Degrees 40 minutes 42 seconds West - 57.33 feet;

North 69 Degrees 20 minutes 05 seconds West - 51.28 feet and

North 73 Degrees 54 minutes 23 seconds West - 38.36 feet to point of departure from said creek centerline; thence

South 08 Degrees 17 minutes 41 seconds West - 39.31 feet to a point of curve to the right; thence

Along the arc of said curve (radius=90.60 ft.; Chord bear/dist S.26°36'51"W. - 56.96 ft.) a distance of 57.94 feet to a point of tangency; thence

South 44 Degrees 56 minutes 06 seconds West - 210.06 feet to a point; thence

North 79 Degrees 00 minutes 00 seconds West - 35.70 feet to the centerline of Abney Farm Road; thence along said centerline on the following six courses

North 33 Degrees 18 minutes 34 seconds East - 1.88 feet;

North 44 Degrees 56 minutes 06 seconds East - 228.80 feet;

North 39 Degrees 33 minutes 55 seconds East - 17.58 feet;

North 15 Degrees 29 minutes 42 seconds East - 19.57 feet;

North 08 Degrees 17 minutes 41 seconds East - 82.22 feet and

North 19 Degrees 58 minutes 26 seconds East - 58.19 feet to point of departure from said road; thence

East - 45.01 feet to a point; thence

North 37 Degrees 30 minutes 00 seconds East - 237.91 feet to a point; thence

North 01 Degree 27 minutes 11 seconds East - 244.59 feet to a point on the line between the Southeast $\frac{1}{4}$ of the Northwest $\frac{1}{4}$ and the Northeast $\frac{1}{4}$ of the Northwest $\frac{1}{4}$ of said Section 24; thence

South 89 Degrees 34 minutes 24 seconds West - 140.08 feet to a point; thence

South 89 Degrees 54 minutes 13 seconds West - 578.18 feet to the Point of Beginning.

Containing 50.71 acres of land lying and situated in Section 24, Township 8 South, Range 14 East, Saint Tammany Parish, Louisiana.

SECTION 24, T 8 S - R 14 E
ST. TAMMANY PARISH, LOUISIANA RORAE



1. LARD, MEAT, BUTTER
 2. TOTAL MEAT = 10,716 MONIES
 3. MEAT, BUTTER = 1,748
 4. MEAT, BUTTER = 1,748
 5. MEAT, BUTTER = 1,748
 6. MEAT, BUTTER = 1,748
 7. MEAT, BUTTER = 1,748
 8. MEAT, BUTTER = 1,748
 9. MEAT, BUTTER = 1,748
 10. MEAT, BUTTER = 1,748
 11. MEAT, BUTTER = 1,748
 12. MEAT, BUTTER = 1,748
 13. MEAT, BUTTER = 1,748
 14. MEAT, BUTTER = 1,748
 15. MEAT, BUTTER = 1,748
 16. MEAT, BUTTER = 1,748
 17. MEAT, BUTTER = 1,748
 18. MEAT, BUTTER = 1,748
 19. MEAT, BUTTER = 1,748
 20. MEAT, BUTTER = 1,748
 21. MEAT, BUTTER = 1,748
 22. MEAT, BUTTER = 1,748
 23. MEAT, BUTTER = 1,748
 24. MEAT, BUTTER = 1,748
 25. MEAT, BUTTER = 1,748
 26. MEAT, BUTTER = 1,748
 27. MEAT, BUTTER = 1,748
 28. MEAT, BUTTER = 1,748
 29. MEAT, BUTTER = 1,748
 30. MEAT, BUTTER = 1,748
 31. MEAT, BUTTER = 1,748
 32. MEAT, BUTTER = 1,748
 33. MEAT, BUTTER = 1,748
 34. MEAT, BUTTER = 1,748
 35. MEAT, BUTTER = 1,748
 36. MEAT, BUTTER = 1,748
 37. MEAT, BUTTER = 1,748
 38. MEAT, BUTTER = 1,748
 39. MEAT, BUTTER = 1,748
 40. MEAT, BUTTER = 1,748
 41. MEAT, BUTTER = 1,748
 42. MEAT, BUTTER = 1,748
 43. MEAT, BUTTER = 1,748
 44. MEAT, BUTTER = 1,748
 45. MEAT, BUTTER = 1,748
 46. MEAT, BUTTER = 1,748
 47. MEAT, BUTTER = 1,748
 48. MEAT, BUTTER = 1,748
 49. MEAT, BUTTER = 1,748
 50. MEAT, BUTTER = 1,748
 51. MEAT, BUTTER = 1,748
 52. MEAT, BUTTER = 1,748
 53. MEAT, BUTTER = 1,748
 54. MEAT, BUTTER = 1,748
 55. MEAT, BUTTER = 1,748
 56. MEAT, BUTTER = 1,748
 57. MEAT, BUTTER = 1,748
 58. MEAT, BUTTER = 1,748
 59. MEAT, BUTTER = 1,748
 60. MEAT, BUTTER = 1,748
 61. MEAT, BUTTER = 1,748
 62. MEAT, BUTTER = 1,748
 63. MEAT, BUTTER = 1,748
 64. MEAT, BUTTER = 1,748
 65. MEAT, BUTTER = 1,748
 66. MEAT, BUTTER = 1,748
 67. MEAT, BUTTER = 1,748
 68. MEAT, BUTTER = 1,748
 69. MEAT, BUTTER = 1,748
 70. MEAT, BUTTER = 1,748
 71. MEAT, BUTTER = 1,748
 72. MEAT, BUTTER = 1,748
 73. MEAT, BUTTER = 1,748
 74. MEAT, BUTTER = 1,748
 75. MEAT, BUTTER = 1,748
 76. MEAT, BUTTER = 1,748
 77. MEAT, BUTTER = 1,748
 78. MEAT, BUTTER = 1,748
 79. MEAT, BUTTER = 1,748
 80. MEAT, BUTTER = 1,748
 81. MEAT, BUTTER = 1,748
 82. MEAT, BUTTER = 1,748
 83. MEAT, BUTTER = 1,748
 84. MEAT, BUTTER = 1,748
 85. MEAT, BUTTER = 1,748
 86. MEAT, BUTTER = 1,748
 87. MEAT, BUTTER = 1,748
 88. MEAT, BUTTER = 1,748
 89. MEAT, BUTTER = 1,748
 90. MEAT, BUTTER = 1,748
 91. MEAT, BUTTER = 1,748
 92. MEAT, BUTTER = 1,748
 93. MEAT, BUTTER = 1,748
 94. MEAT, BUTTER = 1,748
 95. MEAT, BUTTER = 1,748
 96. MEAT, BUTTER = 1,748
 97. MEAT, BUTTER = 1,748
 98. MEAT, BUTTER = 1,748
 99. MEAT, BUTTER = 1,748
 100. MEAT, BUTTER = 1,748

2800 East Quince Blvd., Suite 101
St. Louis, Missouri 63116
E-mail: jennings@ednet.org

Phone: 314-435-4400 Fax: 314-435-4433
Internet: www.ednet.org E-mail: info@ednet.org

[illegible][illegible]

CERTIFICATION

I hereby certify that the above information is true and correct to the best of my knowledge and belief.

Signed _____
Date _____

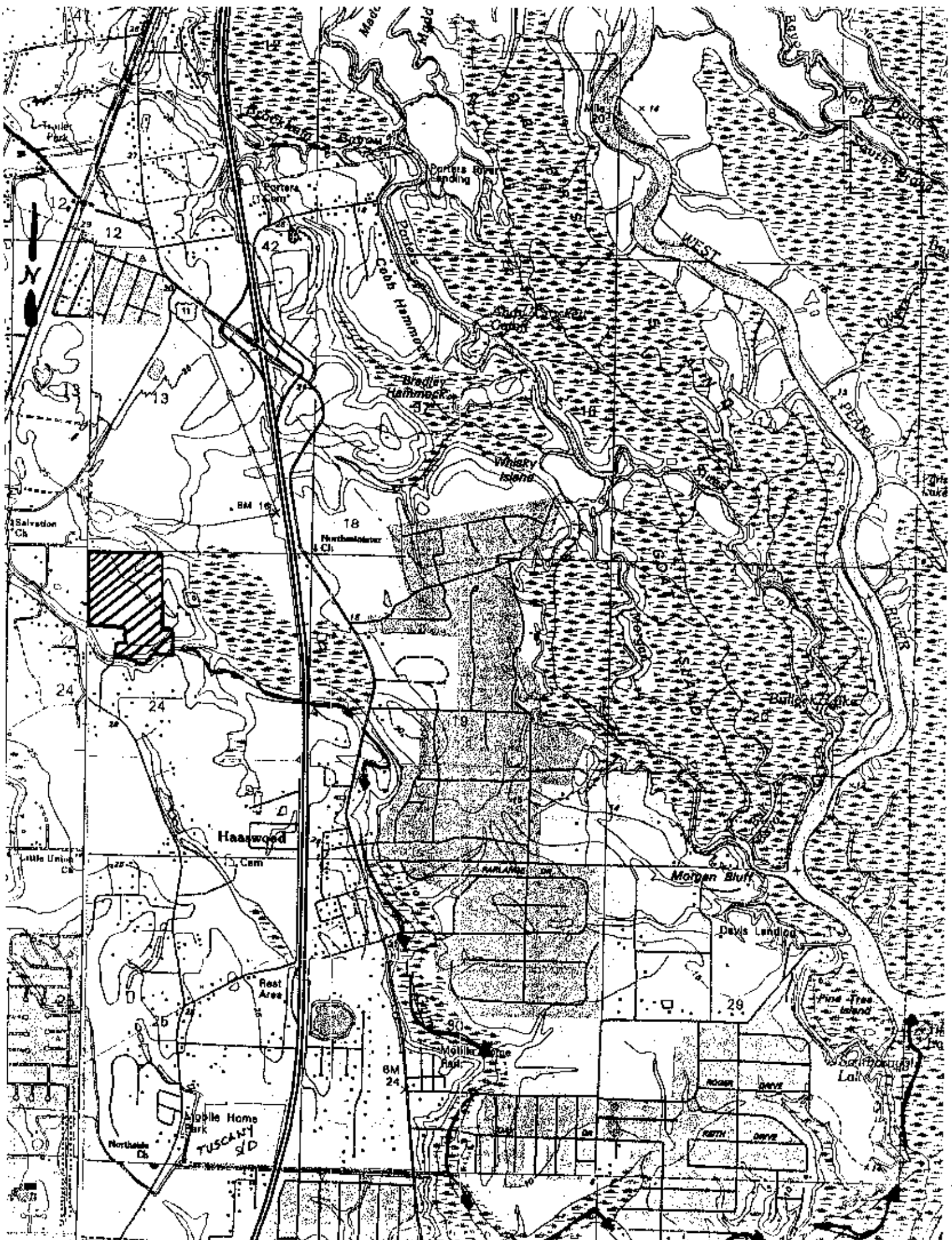
Secretary

G.D. PRODUCTIONS, L.L.C.

1997, 1998, 1999, 2000, 2001, 2002, 2003, 2004, 2005, 2006, 2007, 2008, 2009, 2010, 2011, 2012, 2013, 2014, 2015, 2016, 2017, 2018, 2019, 2020, 2021, 2022, 2023, 2024, 2025, 2026, 2027, 2028, 2029, 2030, 2031, 2032, 2033, 2034, 2035, 2036, 2037, 2038, 2039, 2040, 2041, 2042, 2043, 2044, 2045, 2046, 2047, 2048, 2049, 2050, 2051, 2052, 2053, 2054, 2055, 2056, 2057, 2058, 2059, 2060, 2061, 2062, 2063, 2064, 2065, 2066, 2067, 2068, 2069, 2070, 2071, 2072, 2073, 2074, 2075, 2076, 2077, 2078, 2079, 2080, 2081, 2082, 2083, 2084, 2085, 2086, 2087, 2088, 2089, 2090, 2091, 2092, 2093, 2094, 2095, 2096, 2097, 2098, 2099, 2100, 2101, 2102, 2103, 2104, 2105, 2106, 2107, 2108, 2109, 2110, 2111, 2112, 2113, 2114, 2115, 2116, 2117, 2118, 2119, 2120, 2121, 2122, 2123, 2124, 2125, 2126, 2127, 2128, 2129, 2130, 2131, 2132, 2133, 2134, 2135, 2136, 2137, 2138, 2139, 2140, 2141, 2142, 2143, 2144, 2145, 2146, 2147, 2148, 2149, 2150, 2151, 2152, 2153, 2154, 2155, 2156, 2157, 2158, 2159, 2160, 2161, 2162, 2163, 2164, 2165, 2166, 2167, 2168, 2169, 2170, 2171, 2172, 2173, 2174, 2175, 2176, 2177, 2178, 2179, 2180, 2181, 2182, 2183, 2184, 2185, 2186, 2187, 2188, 2189, 2190, 2191, 2192, 2193, 2194, 2195, 2196, 2197, 2198, 2199, 2200, 2201, 2202, 2203, 2204, 2205, 2206, 2207, 2208, 2209, 2210, 2211, 2212, 2213, 2214, 2215, 2216, 2217, 2218, 2219, 2220, 2221, 2222, 2223, 2224, 2225, 2226, 2227, 2228, 2229, 2230, 2231, 2232, 2233, 2234, 2235, 2236, 2237, 2238, 2239, 2240, 2241, 2242, 2243, 2244, 2245, 2246, 2247, 2248, 2249, 2250, 2251, 2252, 2253, 2254, 2255, 2256, 2257, 2258, 2259, 2260, 2261, 2262, 2263, 2264, 2265, 2266, 2267, 2268, 2269, 2270, 2271, 2272, 2273, 2274, 2275, 2276, 2277, 2278, 2279, 2280, 2281, 2282, 2283, 2284, 2285, 2286, 2287, 2288, 2289, 2290, 2291, 2292, 2293, 2294, 2295, 2296, 2297, 2298, 2299, 2300, 2301, 2302, 2303, 2304, 2305, 2306, 2307, 2308, 2309, 2310, 2311, 2312, 2313, 2314, 2315, 2316, 2317, 2318, 2319, 2320, 2321, 2322, 2323, 2324, 2325, 2326, 2327, 2328, 2329, 2330, 2331, 2332, 2333, 2334, 2335, 2336, 2337, 2338, 2339, 2340, 2341, 2342, 2343, 2344, 2345, 2346, 2347, 2348, 2349, 2350, 2351, 2352, 2353, 2354, 2355, 2356, 2357, 2358, 2359, 2360, 2361, 2362, 2363, 2364, 2365, 2366, 2367, 2368, 2369, 2370, 2371, 2372, 2373, 2374, 2375, 2376, 2377, 2378, 2379, 2380, 2381, 2382, 2383, 2384, 2385, 2386, 2387, 2388, 2389, 2390, 2391, 2392, 2393, 2394, 2395, 2396, 2397, 2398, 2399, 2400, 2401, 2402, 2403, 2404, 2405, 2406, 2407, 2408, 2409, 2410, 2411, 2412, 2413, 2414, 2415, 2416, 2417, 2418, 2419, 2420, 2421, 2422, 2423, 2424, 2425, 2426, 2427, 2428, 2429, 2430, 2431, 2432, 2433, 2434, 2435, 2436, 2437, 2438, 2439, 2440, 2441, 2442, 2443, 2444, 2445, 2446, 2447, 2448, 2449, 2450, 2451, 2452, 2453, 2454, 2455, 2456, 2457, 2458, 2459, 2460, 2461, 2462, 2463, 2464, 2465, 2466, 2467, 2468, 2469, 2470, 2471, 2472, 2473, 2474, 2475, 2476, 2477, 2478, 2479, 2480, 2481, 2482, 2483, 2484, 2485, 2486, 2487, 2488, 2489, 2490, 2491, 2492, 2493, 2494, 2495, 2496, 2497, 2498, 2499, 2500, 2501, 2502, 2503, 2504, 2505, 2506, 2507, 2508, 2509, 2510, 2511, 2512, 2513, 2514, 2515, 2516, 2517, 2518, 2519, 2520, 2521, 2522, 2523, 2524, 2525, 2526, 2527, 2528, 2529, 2530, 2531, 2532, 2533, 2534, 2535, 2536, 2537, 2538, 2539, 2540, 2541, 2542, 2543, 2544, 2545, 2546, 2547, 2548, 2549, 2550, 2551, 2552, 2553, 2554, 2555, 2556, 2557, 2558, 2559, 2560, 2561, 2562, 2563, 2564, 2565, 2566, 2567, 2568, 2569, 2570, 2571, 2572, 2573, 2574, 2575, 2576, 2577, 2578, 2579, 2580, 2581, 2582, 2583, 2584, 2585, 2586, 2587, 2588, 2589, 2590, 2591, 2592, 2593, 2594, 2595, 2596, 2597, 2598, 2599, 2600, 2601, 2602, 2603, 2604, 2605, 2606, 2607, 2608, 2609, 2610, 2611, 2612, 2613, 2614, 2615, 2616, 2617, 2618, 2619, 2620, 2621, 2622, 2623, 2624, 2625, 2626, 2627, 2628, 2629, 2630, 2631, 2632, 2633, 2634, 2635, 2636, 2637, 2638, 2639, 2640, 2641, 2642, 2643, 2644, 2645, 2646, 2647, 2648, 2649, 2650, 2651, 2652, 2653, 2654, 2655, 2656, 2657, 2658, 2659, 2660, 2661, 2662, 2663, 2664, 2665, 2666, 2667, 2668, 2669, 2670, 2671, 2672, 2673, 2674, 2675, 2676, 2677, 2678, 26

2005-12-076

3251



2005-12-076

3251

ENVIRONMENTAL ASSESSMENT DATA FORM

Description of Project

Applicant's Name Larry AbneyAddress P.O. Box 992, Slidell, La 70459

Attach area location Map showing the proposed development

Name of Development Oakley PlaceSection 24 Township 8 Range 14Number of acres in Development 50.712Type of streets asphaltType of water systems CentralType of sewerage system CentralUltimate disposal of wastes Gum Bayou & West PearlUltimate disposal of surface drainage Gum Bayou & West PearlLand form: Flat ☒ Rolling ☐ Marsh ☐
Swamp ☐ Inundated ☐Existing land use: Rural ☒ Residential ☐
Commercial ☐ Industrial ☐Proposed land use: Rural ☐ Residential ☒
Commercial ☐ Industrial ☐Conforms to Major Road Plan: Yes ☒ No ☐Water frontage: Yes ☐ No ☒ if so how much

Name of Stream _____

Major highway frontage: Yes ☐ No ☒

Name of Highway _____

Is development subject to inundation in normal high rainfall and/or tide?

Yes ☐ No ☒

Will canals be constructed into rivers or lakes?

Yes ☐ No ☒

ANSWER ALL QUESTIONS BY A CIRCLE AROUND YES OR NO

1. Does the proposed development

- a. Disrupt, alter or destroy an historic or archaeological site or district. YES ☐ NO ☒
- b. Have a substantial impact on natural, ecological recreation, or scenic resources. YES ☐ NO ☒
- c. Displace a substantial number of people. YES ☐ NO ☒
- d. Conform with the environmental plans and goals that have been adopted by the parish. YES ☒ NO ☐
- e. Cause increased traffic, or other congestion. YES ☐ NO ☒
- f. Have substantial esthetics or visual effect on the area. YES ☐ NO ☒

Conf:

ANSWER ALL QUESTIONS BY A CIRCLE AROUND YES OR NO

- g. Breach national, state or local standards relating to
- | | |
|--|---|
| (1) Noise | YES <input checked="" type="radio"/> NO |
| (2) Air Quality | YES <input checked="" type="radio"/> NO |
| (3) Water Quality | YES <input checked="" type="radio"/> NO |
| (4) Contamination of public water supply | YES <input checked="" type="radio"/> NO |
| (5) Ground water levels | YES <input checked="" type="radio"/> NO |
| (6) Flooding | YES <input checked="" type="radio"/> NO |
| (7) Erosion | YES <input checked="" type="radio"/> NO |
| (8) Sedimentation | YES <input checked="" type="radio"/> NO |
- h. Affect rare or endangered species of animal or plant habitat or such a species
- i. Cause substantial interference with the movement of any resident or migratory fish or wildlife species
- j. Induce substantial concentration of population
- k. Will dredging be required
- If yes, denote the area proposed for spoil placement and the anticipated volume in cubic yards.

2. Attach specifications on the following, if applicable

- a. What types of materials will be disposed of as a result of the production of manufacturing process. If applicable explain where and in what manner disposal will occur.
- N/A
- b. What will be the average noise level of the development during working hours.
- minimal
- c. Will any smoke, dust or fumes be emitted as a result of the operational process, if so explain fully.
- no

Explain in detail the items marked YES above indicating how you propose to reduce or eliminate the environmental problems caused by your development and explain how you will ultimately dispose of the surface water generated by your development including the route of the surface water into a major stream and if you propose a center sewerage system the ultimate disposal of the effluent produced.