

ST. TAMMANY PARISH COUNCIL

ORDINANCE

ORDINANCE CALENDAR NO. 3272 ORDINANCE COUNCIL SERIES NO. 06-

SPONSORED BY: MR. GOULD PROVIDED BY: COUNCIL OFFICE

INTRODUCED BY: _____ SECONDED BY: _____

ON THE _____ DAY OF _____ 2006

ORDINANCE TO EXTEND FOR SIX (6) MONTHS THE MORATORIUM ON THE ISSUANCE OF PERMITS FOR THE CONSTRUCTION OR PLACEMENT OF BUILDING STRUCTURES ON PROPERTY WITHIN A PORTION OF PINEVIEW HEIGHTS SUBDIVISION AND A PORTION OF SURROUNDING AREAS IN UNINCORPORATED ST. TAMMANY PARISH IN WARD 4, DISTRICT 5.

WHEREAS, on December 1, 2005, the Parish Council adopted Ordinance C.S. No. 05-1221 imposing a six-month moratorium on the issuance of permits for the construction or placement of building structures on property within a portion of Pineview Heights Subdivision and a portion of surrounding areas in Ward 4, District 5; and

WHEREAS, to protect and preserve the health, safety and property interests of residents within Pineview Heights Subdivision and surrounding areas, Ward 4, District 5 of St. Tammany Parish, it is necessary to extend the moratorium to allow sufficient time for evaluation and acquisition of right of way for the Highway 1088 and I-12 Interchange affecting the area more fully described within this ordinance.

THE PARISH OF ST. TAMMANY HEREBY ORDAINS that it extends for six months the moratorium on the issuance of permits for the construction or placement of building structures on property within a portion of Pineview Heights Subdivision and surrounding area in Ward 4, District 5, described as follows:

All that property within a portion of Pineview Heights Subdivision comprising any and all squares and lots of record therein, located within Section 32, Township 7 South, Range 12 East and as more fully described on the finalized subdivision plat dated November 12, 1958. All as indicated on the plat attached hereto; and

All property located within the required right of way of the Louisiana 1088 Interchange Route I-12, as shown on attached drawings from N-Y Associates, Inc., dated September 11, 2000.

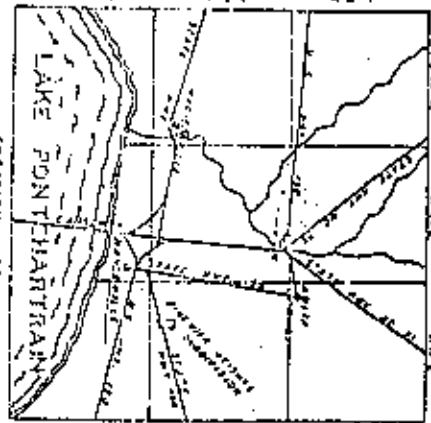
BE IT FURTHER ORDAINED that this Ordinance shall be effective immediately upon adoption and remain in effect through December 1, 2006.

BE IT FURTHER ORDAINED that the moratorium herein imposed may be vacated, in whole or in part, by Resolution of this governing body pursuant to Chapter 5, Article II, Section 5-056.00 of the Parish Code of Ordinances.

REPEAL: All Ordinances or parts of Ordinances in conflict herewith are hereby repealed.

SEVERABILITY: If any provision of this Ordinance shall be held to be invalid, such invalidity shall not affect other provisions herein which can be given effect without the invalid provision and to this end the provisions of this Ordinance are hereby declared to be severable.

Ord Cal 3272



PLAT OF PINEVIEW HEIGHTS SUBDIVISION

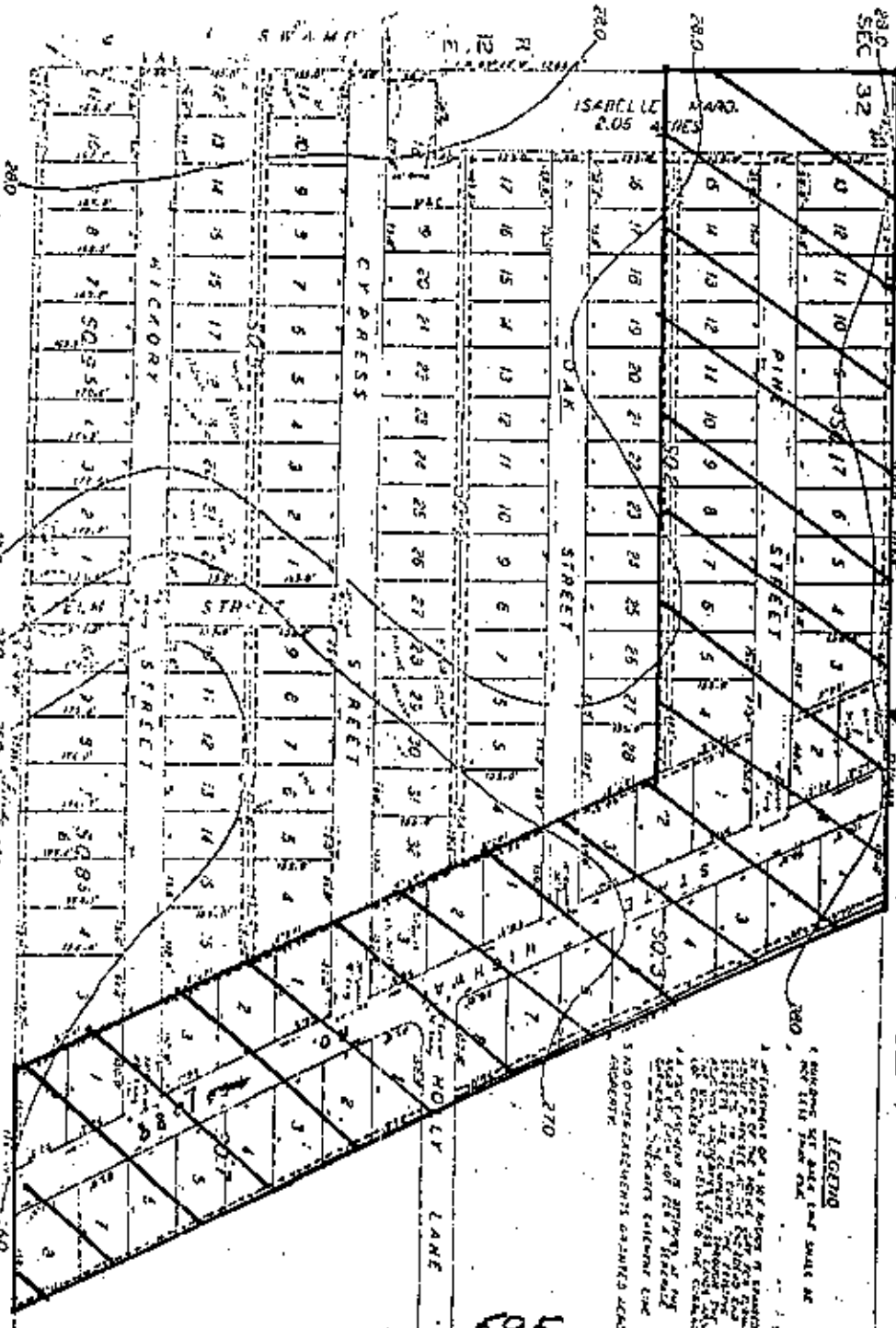
LOCATED IN THE EAST HALF OF THE
SOUTHEAST QUARTER OF SECTION 32,
TOWNSHIP 7 SOUTH, RANGE 12 EAST,
ST. TAMMANY PARISH, LOUISIANA.

L. R. SMITH
DEVELOPER

SURVEY BY
NOVEMBER 12, 1953
CONVINCION, LA.

SCALE 1"=100'

Moratorium Area I
also see N-Y Associates
right of way drawings



LEGEND

1. BOUNDARY OF A LOT OR TRACT OF LAND SHOWN BY A SOLID LINE.

2. BOUNDARY OF A LOT OR TRACT OF LAND SHOWN BY A DASHED LINE.

3. BOUNDARY OF A LOT OR TRACT OF LAND SHOWN BY A DOTTED LINE.

4. BOUNDARY OF A LOT OR TRACT OF LAND SHOWN BY A LINE WITH SHORT DASHES.

5. BOUNDARY OF A LOT OR TRACT OF LAND SHOWN BY A LINE WITH LONG DASHES.

6. BOUNDARY OF A LOT OR TRACT OF LAND SHOWN BY A LINE WITH SHORT DASHES AND LONG DASHES.

7. BOUNDARY OF A LOT OR TRACT OF LAND SHOWN BY A LINE WITH SHORT DASHES AND LONG DASHES AND DOTTED LINES.

8. BOUNDARY OF A LOT OR TRACT OF LAND SHOWN BY A LINE WITH SHORT DASHES AND LONG DASHES AND DOTTED LINES AND DASHED LINES.

9. BOUNDARY OF A LOT OR TRACT OF LAND SHOWN BY A LINE WITH SHORT DASHES AND LONG DASHES AND DOTTED LINES AND DASHED LINES AND DOTTED LINES.

10. BOUNDARY OF A LOT OR TRACT OF LAND SHOWN BY A LINE WITH SHORT DASHES AND LONG DASHES AND DOTTED LINES AND DASHED LINES AND DOTTED LINES AND DASHED LINES.

