

ST. TAMMANY PARISH COUNCIL

ORDINANCE

ORDINANCE CALENDAR NO. 3362 ORDINANCE COUNCIL SERIES NO. _____

COUNCIL SPONSOR STEFANCIK/DAVIS PROVIDED BY: PLANNING

INTRODUCED BY: MR. BURKHALTER SECONDED BY: MS. BRISTER

ON THE 7TH DAY OF SEPTEMBER, 2006

An Ordinance amending the official zoning map of St. Tammany Parish, La, to reclassify a certain parcel located on the east side of Dupre Street, north of US Highway 190 and which property comprises a total of 1.046 acres of land more or less, from its present SA (Suburban Agricultural) District to an A-4 (Single Family Residential) District, Ward 4, District 7. (ZC06-08-080)

Whereas, the Zoning Commission of the Parish of St. Tammany after hearing in accordance with law, Case No. ZC06-08-080, has recommended to the Council of the Parish of St. Tammany, Louisiana, that the zoning classification of the above referenced area be changed from its present SA (Suburban Agricultural) District to an A-4 (Single Family Residential) District (see Exhibit "A") for complete boundaries.

Whereas, the St. Tammany Parish Council has held its public hearing in accordance with law:

Whereas, the St. Tammany Parish Council has found it necessary for the purpose of protecting the public health, safety and general welfare, to designate the above described property as A-4 (Single Family Residential) District.

THE PARISH OF ST. TAMMANY HEREBY ORDAINS, in regular session convened that:

SECTION I: The zoning classification of the above described property is hereby changed from its present SA (Suburban Agricultural) District to an A-4 (Single Family Residential) District.

SECTION II: The official zoning map of the Parish of St. Tammany shall be and is hereby amended to incorporate the zoning reclassification specified in Section I hereof.

REPEAL: All Ordinances or parts of Ordinances in conflict herewith are hereby repealed.

SEVERABILITY: If any provision of this Ordinance shall be held to be invalid, such invalidity shall not affect other provisions herein which can be given effect without the invalid provision and to this end the provisions of this Ordinance are hereby declared to be severable.

EFFECTIVE DATE: This Ordinance shall become effective fifteen (15) days after adoption.

MOVED FOR ADOPTION BY: _____, SECONDED BY: _____

WHEREUPON THIS ORDINANCE WAS SUBMITTED TO A VOTE AND RESULTED IN THE FOLLOWING:

YEAS:

NAYS:

ABSTAIN:

ABSENT:

EXHIBIT "A"

3362

ZC06-08-080

A CERTAIN PORTION OF GROUND, together with all the buildings and improvements thereon and all the rights, ways, privileges, servitudes, advantages, and appurtenances thereunto belonging or in anywise appertaining, situated in the State of Louisiana, Parish of St. Tammany, Town of Mandeville, being a portion of **SQUARE 173**, and is more fully described as follows:

COMMENCE at the intersection of the northerly right-of-way line of Caroline Street and the westerly right-of-way line of Dupre Street (the NW corner);

THENCE, proceed across the right-of-way of Dupre Street, in a southeasterly direction, a distance of 53.30 feet to the southwest corner of Square 173 being the **POINT OF BEGINNING**;

THENCE, proceed along the easterly right-of-way line of Dupre Street, in a northeasterly direction, a distance of 253.15 feet to a point;

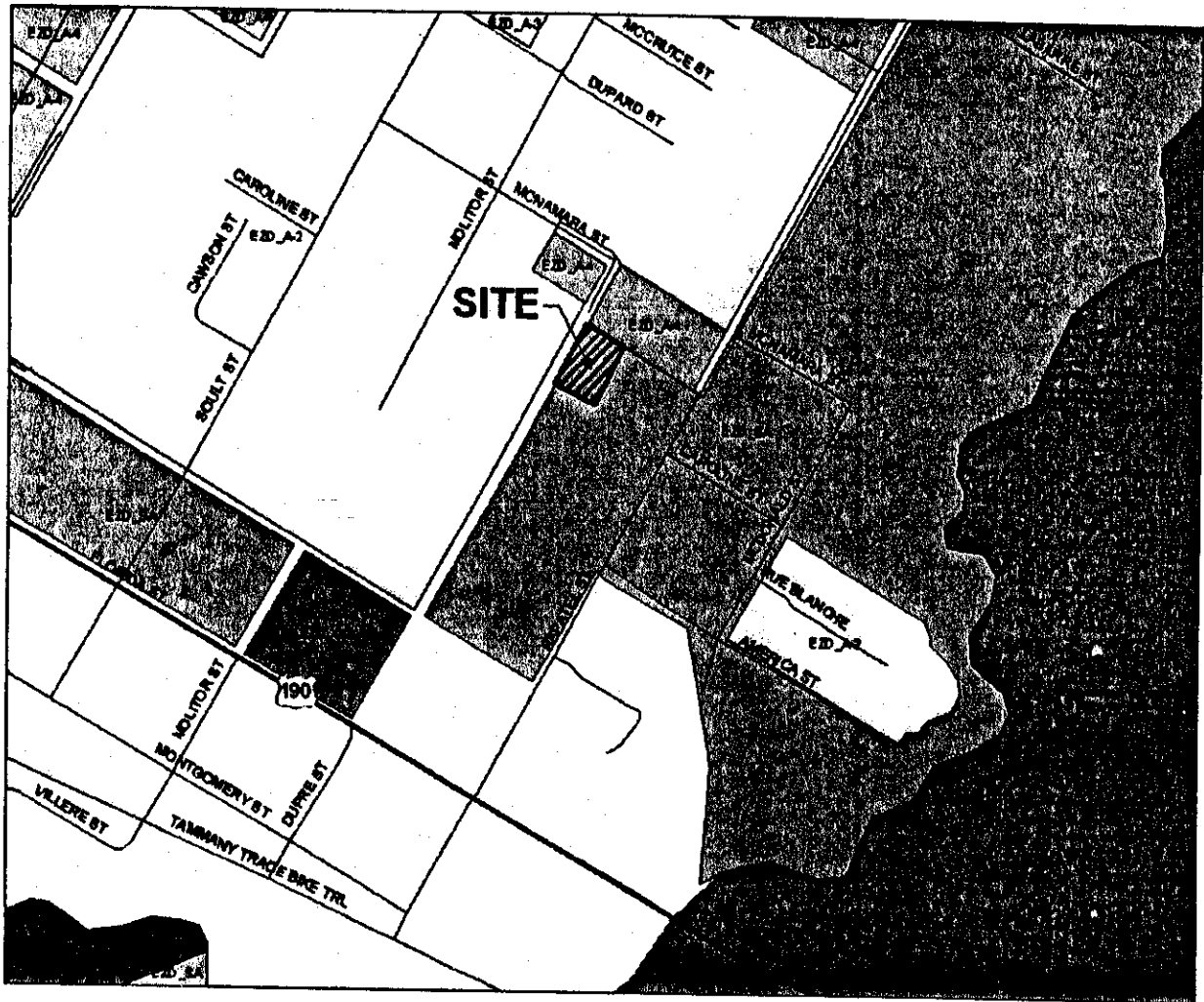
THENCE, turn an interior angle of 90° , proceed in a southeasterly direction, a distance of 180.00 feet to a point;

THENCE, turn an interior angle of 90° , proceed in a southwesterly direction, a distance of 253.15 feet to a point on the former northerly right-of-way line of Caroline Street;

THENCE, turn an interior angle of 90° , proceed in a northwesterly direction, along the aforesaid former northerly right-of-way, a distance of 180.0 feet to the **POINT OF BEGINNING**.

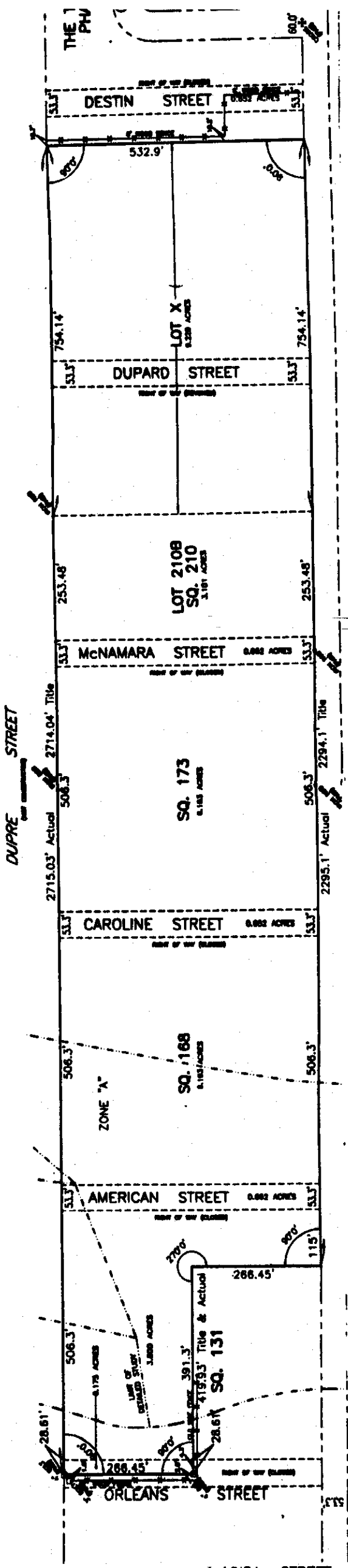
The above described portion of ground contains 1.046 acres

CASE NO.: ZC06-08-080
PETITIONER: Mr. Edward Couret
OWNER: 375 Properties L.L.C. 3362
REQUESTED CHANGE: From SA (Suburban Agricultural) District to A-4 (Single Family Residential) District
LOCATION: Parcel located on the east side of Dupre Street, north of US Highway 190; S46, T8S, R12E; Ward 4, District 7
SIZE: 1.046 acres



ZC06-08-080

3362



THE PH

DESTIN STREET

DUPARD STREET

McNAMARA STREET

CAROLINE STREET

AMERICAN STREET

ORLEANS STREET

DUPRE STREET

LOT X
0.229 ACRES

LOT 210
SQ. 210
1.101 ACRES

SQ. 173
0.183 ACRES

SQ. 168
0.183 ACRES

SQ. 131
0.179 ACRES

2715.03' Actual
2714.04' True

2295.1' Actual
2294.1' True

506.3'

506.3'

506.3'

532.9'

754.14'

253.48'

506.3'

506.3'

506.3'

506.3'

506.3'

506.3'

754.14'

253.48'

506.3'

506.3'

506.3'

506.3'

506.3'

506.3'

270°

87°

115°

28.61'

266.45'

266.45'

391.3'

419.93' Title & Actual

28.61'

0.179 ACRES

3.000 ACRES

0.002 ACRES

0.002 ACRES

0.002 ACRES

0.002 ACRES

0.002 ACRES

53.3'

53.3'

53.3'

53.3'

53.3'

53.3'

53.3'

53.3'

53.3'

53.3'

53.3'

53.3'

53.3'

53.3'

53.3'

53.3'

53.3'

53.3'

53.3'

53.3'

53.3'

53.3'

53.3'

53.3'

53.3'

53.3'

53.3'

53.3'

53.3'

60.0'

60.0'

60.0'

60.0'

60.0'

60.0'

60.0'

60.0'

60.0'

60.0'

60.0'

60.0'

60.0'

60.0'

60.0'

60.0'

60.0'

60.0'

60.0'

60.0'

60.0'

60.0'

60.0'

60.0'

60.0'

60.0'

60.0'

60.0'

60.0'

60.0'

60.0'

60.0'

60.0'

60.0'

60.0'

60.0'

60.0'

60.0'

60.0'

60.0'

60.0'

60.0'

60.0'

60.0'

60.0'

60.0'

60.0'

60.0'