

ST. TAMMANY PARISH COUNCIL

ORDINANCE

ORDINANCE CALENDAR NO. 3355

ORDINANCE COUNCIL SERIES NO. \_\_\_\_\_

COUNCIL SPONSOR STEFANCK/DAVIS

PROVIDED BY: PLANNING

INTRODUCED BY: \_\_\_\_\_

SECONDED BY: \_\_\_\_\_

ON THE \_\_\_\_\_ DAY OF \_\_\_\_\_, 2006

An Ordinance amending the official zoning map of St. Tammany Parish, La, to reclassify a certain parcel located on the east side of east side of LA Highway 59, south of Crain Street, being lots 1, 2, 27, 28, Square 1, Abita Springs Terrace and which property comprises a total of 12,000 sq. ft. of land more or less, from its present SA (Suburban Agricultural) District to a C-2 (Highway Commercial) District, Ward 4, District 7. (ZC06-08-067)

Whereas, the Zoning Commission of the Parish of St. Tammany after hearing in accordance with law, Case No. ZC06-08-067, has recommended to the Council of the Parish of St. Tammany, Louisiana, that the zoning classification of the above referenced area be changed from its present SA (Suburban Agricultural) District to a C-2 (Highway Commercial) District (see Exhibit "A") for complete boundaries.

Whereas, the St. Tammany Parish Council has held its public hearing in accordance with law:

Whereas, the St. Tammany Parish Council has found it necessary for the purpose of protecting the public health, safety and general welfare, to designate the above described property as C-2 (Highway Commercial) District.

THE PARISH OF ST. TAMMANY HEREBY ORDAINS, in regular session convened that:

SECTION I: The zoning classification of the above described property is hereby changed from its present SA (Suburban Agricultural) District to a C-2 (Highway Commercial) District.

SECTION II: The official zoning map of the Parish of St. Tammany shall be and is hereby amended to incorporate the zoning reclassification specified in Section I hereof.

REPEAL: All Ordinances or parts of Ordinances in conflict herewith are hereby repealed.

SEVERABILITY: If any provision of this Ordinance shall be held to be invalid, such invalidity shall not affect other provisions herein which can be given effect without the invalid provision and to this end the provisions of this Ordinance are hereby declared to be severable.

EFFECTIVE DATE: This Ordinance shall become effective fifteen (15) days after adoption.

MOVED FOR ADOPTION BY: \_\_\_\_\_, SECONDED BY: \_\_\_\_\_

WHEREUPON THIS ORDINANCE WAS SUBMITTED TO A VOTE AND RESULTED IN THE FOLLOWING:

YEAS:

NAYS:

ABSTAIN:

ABSENT:

3355

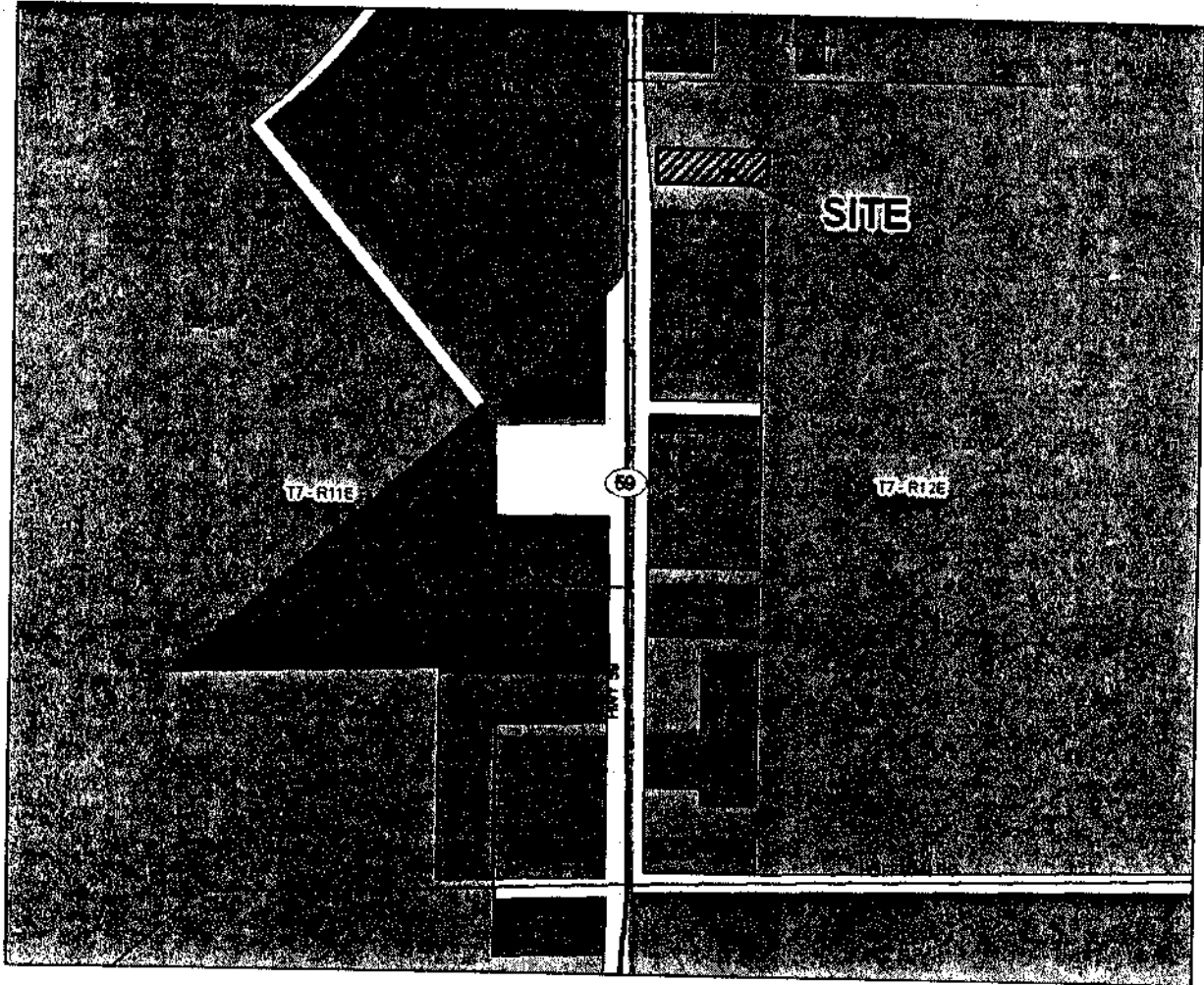
EXHIBIT "A"

ZC06-08-067

FOUR CERTAIN LOTS OF GROUND, together with all the buildings and improvements thereon and all the rights, ways, means, privileges, servitudes, prescriptions, appurtenance and advantages thereunto, belonging or in anywise appertaining thereto, situated in the PARISH OF ST. TAMMANY, STATE OF LOUISIANA, located in the South One-Half of the NW Quarter of SECTION 7, T7S, R12E, designated as LOTS 1, 2, 27 & 28 of SQUARE 1 of ABITA SPRINGS TERRACE (formerly Ponchitolawa Subdivision No. 4) on the plan of subdivision made by Howard Burns, Parish Surveyor, dated October 1913, registered as map file no. 1C, official records of St. Tammany Parish, Louisiana.

3355

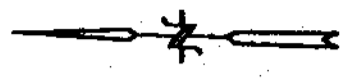
**CASE NO.:** ZC06-08-067  
**PETITIONER:** Joey Celino  
**OWNER:** The Father's Property L.L.C.  
**REQUESTED CHANGE:** From SA (Suburban Agricultural) District to C-2 (Highway Commercial) District  
**LOCATION:** Parcel located on the east side of east side of LA Highway 59, south of Crain Street, being lots 1, 2, 27, 28, Square 1, Abita Springs Terrace; S7, T7S, R12E; Ward 4, District 7  
**SIZE:** 12,000 sq. ft.



LEGAL DESCRIPTION: 2006-08-067

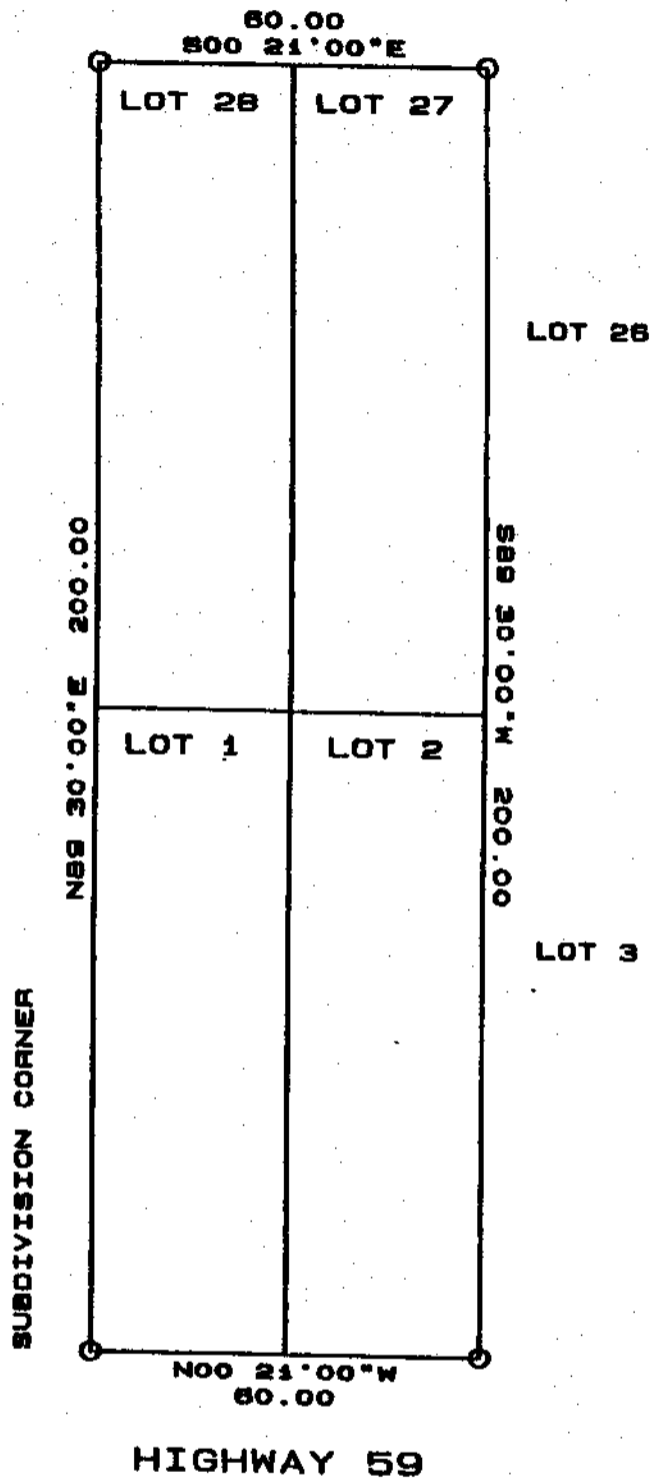
3355

LOTS 1, 2, 27 & 28, SQUARE 1, ABITA SPRINGS TERRACE,  
(formerly Ponchitolawe Subdivision, addition No. 4),  
according to the plat thereof as recorded in Map File  
No. 1-C, Clerk of Court, St. Tammany Parish, Louisiana.



ALEXANDER STREET

ABITA SPRINGS ANNEX  
SUBDIVISION



CERTIFIED TO: