

ST. TAMMANY PARISH COUNCIL

RESOLUTION

RESOLUTION COUNCIL SERIES NO. C-2129

COUNCIL SPONSOR: GOULD

PROVIDED BY: PRESIDENT

RESOLUTION STATING SUPPORT BY ST. TAMMANY PARISH GOVERNMENT OF THE "PLAQUEMINES PARISH NAVIGATION CHANNEL" PROJECT FOR THE ECONOMIC GROWTH OF REGION.

WHEREAS, St. Tammany Parish Government supports a regional approach to economic development for the region to compete with other states for business in the future; and

WHEREAS, the recent expansion of 880,000 acres in the eastern Gulf of Mexico has been made available for lease sales for the exploration and production of natural resources to meet domestic and foreign demand; and

WHEREAS, the close proximity between Venice, Louisiana, and the recent expansion of available acreage in the eastern Gulf of Mexico makes Venice the most efficient, economical, and location of choice by future operators to establish a shore base from which to provide support for this offshore development; and

WHEREAS, in order to accommodate the size and draft of marine vessels required to facilitate this new field in the Gulf of Mexico, the operating depths of certain channels must be increased; and

WHEREAS, the completion of this project will increase demand on the industrial facilities, suppliers of associated products and services upon occupants within the West Jefferson industrial corridor and surrounding areas.

THE PARISH OF ST. TAMMANY HEREBY RESOLVES to support the "Plaquemines Parish Navigation Channel" project for the direct economic growth and development associated within the region.

THIS RESOLUTION HAVING BEEN SUBMITTED TO A VOTE, THE VOTE THEREON WAS AS FOLLOWS:

MOVED FOR ADOPTION BY:

SECONDED BY

YEAS:

NAYS:

ABSTAIN:

ABSENT:

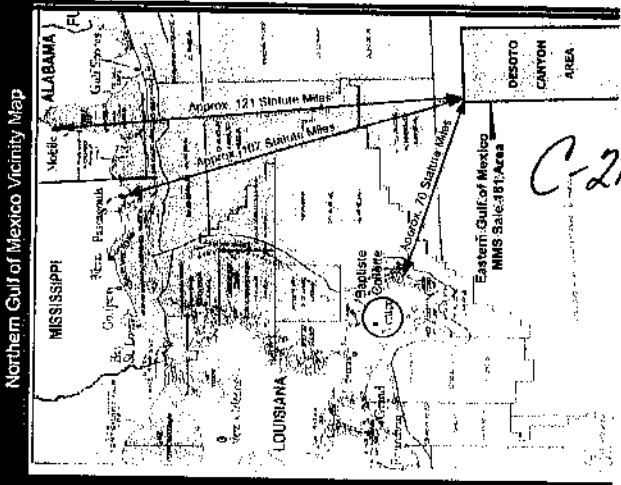
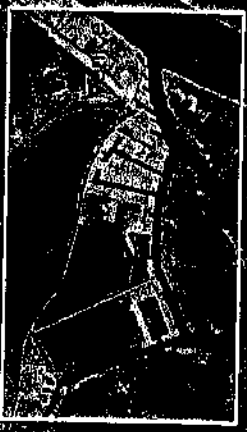
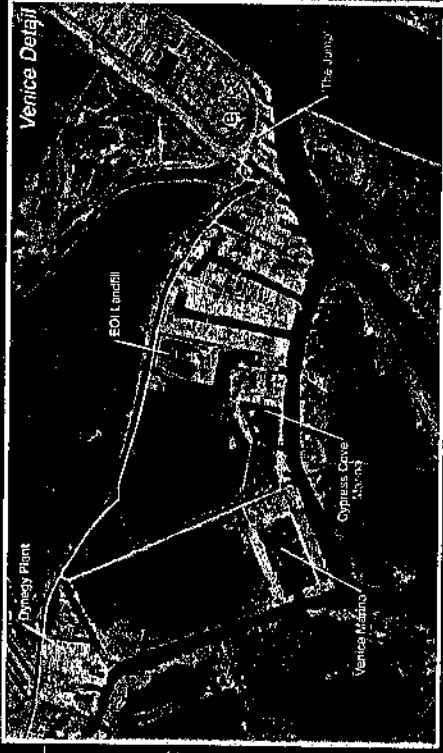
THIS RESOLUTION WAS DECLARED ADOPTED ON THE DAY OF 2007 AT A REGULAR MEETING OF THE PARISH COUNCIL, A QUORUM OF THE MEMBERS BEING PRESENT AND VOTING.

BARRY D. BAGERT, COUNCIL CHAIRMAN

ATTEST:

DIANE HUESCHEN, COUNCIL CLERK

# Venice Area - Baptiste Collette Bayou Plaquemines Parish, Louisiana



Hospital Bay

The Wagon Wheel

See Inset Map for Venice Detail

Baptiste Collette Bayou

Tiger Pass

Grand Pass

Imagery is 2005 color-infrared Digital Ortho Quarter-Quads (post-storms), prepared by the USGS. The photos are projected to the UTM coordinate system, Zone 15/16, NAD83. Map prepared by the Plaquemines Parish GIS department by July 2006.



0 150 Miles