

ST. TAMMANY PARISH COUNCIL

ORDINANCE

ORDINANCE CALENDAR NO. 3599 ORDINANCE COUNCIL SERIES NO. _____

COUNCIL SPONSOR BAGERT/DAVIS PROVIDED BY: PLANNING

INTRODUCED BY: _____ SECONDED BY: _____

ON THE _____ DAY OF _____, 2007

An Ordinance amending the official zoning map of St. Tammany Parish, La, to reclassify a certain parcel located on the south side of LA Highway 22, west of Oullibert Road, north of Koeppe Road and which property comprises a total of 8 acres of land more or less, from its present A-3 (Suburban) District to a C-2 (Highway Commercial) District, Ward 1, District 1. (ZC07-06-031)

Whereas, the Zoning Commission of the Parish of St. Tammany after hearing in accordance with law, Case No. ZC07-06-031, has recommended to the Council of the Parish of St. Tammany, Louisiana, that the zoning classification of the above referenced area be changed from its present A-3 (Suburban) District to a C-2 (Highway Commercial) District (see Exhibit "A") for complete boundaries.

Whereas, the St. Tammany Parish Council has held its public hearing in accordance with law:

Whereas, the St. Tammany Parish Council has found it necessary for the purpose of protecting the public health, safety and general welfare, to designate the above described property as C-2 (Highway Commercial) District.

THE PARISH OF ST. TAMMANY HEREBY ORDAINS, in regular session convened that:

SECTION I: The zoning classification of the above described property is hereby changed from its present A-3 (Suburban) District to a C-2 (Highway Commercial) District.

SECTION II: The official zoning map of the Parish of St. Tammany shall be and is hereby amended to incorporate the zoning reclassification specified in Section I hereof.

REPEAL: All Ordinances or parts of Ordinances in conflict herewith are hereby repealed.

SEVERABILITY: If any provision of this Ordinance shall be held to be invalid, such invalidity shall not affect other provisions herein which can be given effect without the invalid provision and to this end the provisions of this Ordinance are hereby declared to be severable.

EFFECTIVE DATE: This Ordinance shall become effective fifteen (15) days after adoption.

MOVED FOR ADOPTION BY: _____, SECONDED BY: _____

WHEREUPON THIS ORDINANCE WAS SUBMITTED TO A VOTE AND RESULTED IN THE FOLLOWING:

YEAS:

NAYS:

ABSTAIN:

ABSENT:

CASE NO.: ZC07-06-031 3599
PETITIONER: David Aymond
OWNER: Aymond Development
REQUESTED CHANGE: From A-3 (Suburban) District to C-2 (Highway Commercial) District
LOCATION: Parcel located on the south side of LA Highway 22, west of Oullibert Road, north of Koepp Road; S42, T7, R10E; Ward 1, District 1
SIZE: 8 acres

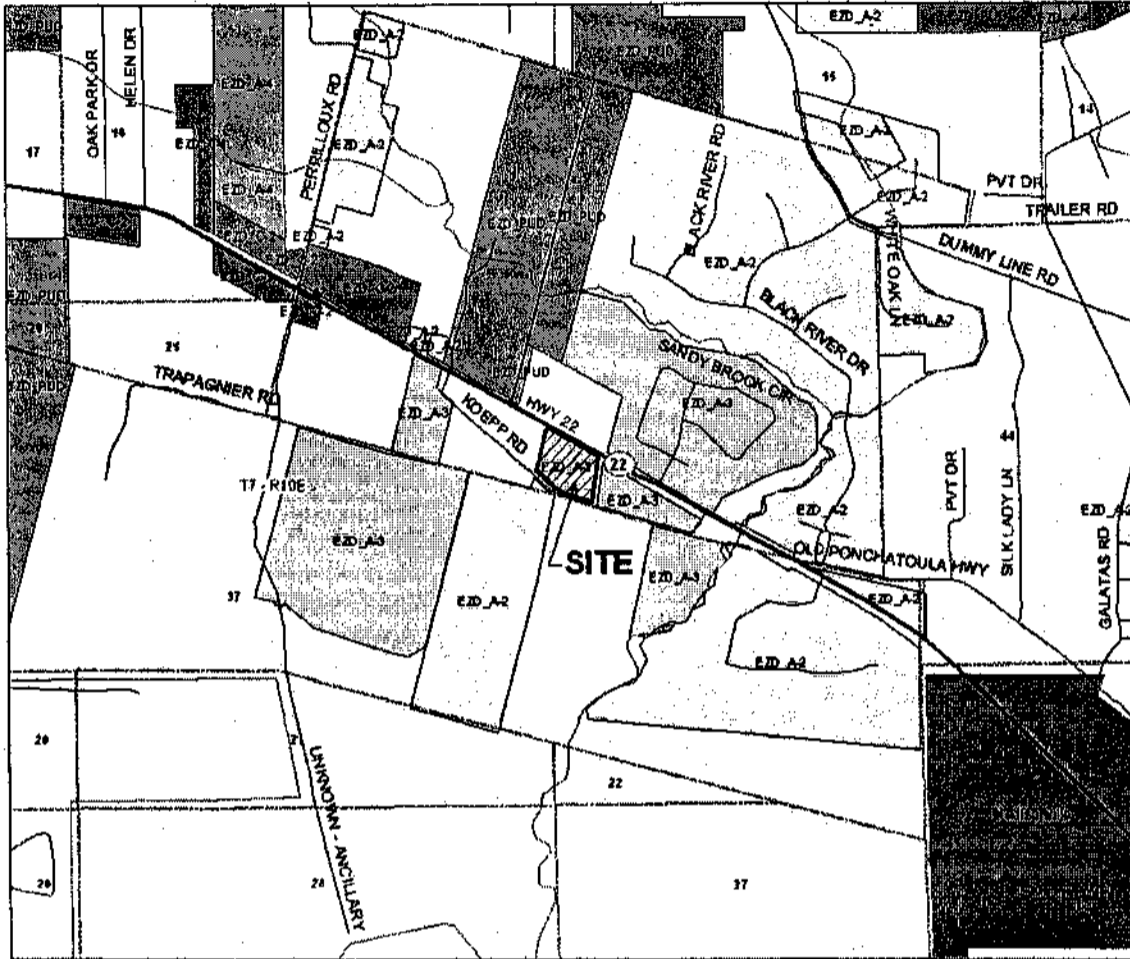


EXHIBIT "A"

ZC07-06-031

ALL THOSE CERTAIN LOTS OR PARCELS OF LAND, together with all buildings and improvements thereon, situated in St. Tammany Parish, Louisiana, and being more fully described as follows, to-wit:

LOTS , 13, 14, 15, 16, 17, 18, 19, 20, 21, 22, 23 and 24, FLEUR DE LORRAINE SUBDIVISION, located in Section 42, Township 7 South, Range 10 East, St. Tammany Parish, Louisiana.

All in accordance with Plat Map No. 1838 filed on July 21, 2000 and with Amendment of Subdivision Plat as recorded on August 30, 2002, records of St. Tammany Parish, Louisiana.