

ST. TAMMANY PARISH COUNCIL

ORDINANCE

ORDINANCE CALENDAR NO. 3679

ORDINANCE COUNCIL SERIES NO. _____

COUNCIL SPONSOR: MR. DEAN

PROVIDED BY: Council Office

INTRODUCED BY MR. DEAN

SECONDED BY MR. THOMPSON

ON THE 4TH DAY OF OCTOBER 2007

ORDINANCE ESTABLISHING A SPEED LIMIT OF 25 MPH ON PERRILLOUX ROAD (I-I-1). (WARD 1, DISTRICT 1)

WHEREAS, St. Tammany Parish Government is charged with protecting the safety and general welfare of citizens of the parish; and

WHEREAS, St. Tammany Parish has experienced an increase in traffic proceeding at unsafe speeds on Perrilloux Road; and

WHEREAS, affected citizens have requested control measures be taken to address this unsafe situation on Parish roads.

THE PARISH OF ST. TAMMANY HEREBY ORDAINS, that

SECTION I: A speed limit of 25 mph is hereby established on Perrilloux Road (I-I-1), as indicated on the attached traffic plan by the Department of Engineering. WARD 1, DISTRICT 1.

SECTION II: The Parish Department of Public Works is directed to post the appropriate signs at these locations.

SECTION III: If any provision of this ordinance shall be held to be invalid, such invalidity shall not affect any other provision herein which can be given effect without the invalid provision and to this end the provisions of this ordinance are hereby declared to be severable.

SECTION IV: All ordinances or parts of ordinances in conflict herewith are hereby repealed.

SECTION IV: This ordinance shall become effective immediately upon final adoption.

MOVED FOR ADOPTION BY: _____, SECONDED BY: _____

WHEREUPON THIS ORDINANCE WAS SUBMITTED TO A VOTE AND RESULTED IN THE FOLLOWING:

YEAS:

NAYS:

ABSTAIN:

ABSENT:

THIS ORDINANCE WAS DECLARED DULY ADOPTED AT A REGULAR MEETING OF THE PARISH COUNCIL ON THE _____ DAY OF _____, 2007; AND BECOMES ORDINANCE COUNCIL SERIES NO. _____.

ATTEST:

DIANE HUESCHEN, COUNCIL CLERK

BARRY BAGERT, COUNCIL CHAIRMAN

KEVIN C. DAVIS, PARISH PRESIDENT

Published Introduction OCTOBER 18, 2007
Published Adoption on _____, 2007
Delivered to Parish President _____, 2007 @ _____
Returned to Council Clerk on _____, 2007 @ _____

ADMINISTRATIVE COMMENT

Reference No.: 3679

Administrative Department: Engineering

PURPOSE: Per recommendation of Department of Engineering, establish a speed limit of 25 mph on Perrilloux Road.

RECOMMENDATION: The Department of Engineering recommends the installation of 9 "Speed Limit 25" signs and 4 "Advisory Speed 15" signs. Signage to be changed from existing "Speed Limit 35" to "Speed Limit 25".

#8


INTER OFFICE



Kevin Davis
Parish President

MEMORANDUM

**ST. TAMMANY PARISH GOVERNMENT
DEPARTMENT OF ENGINEERING**

Date: August 29, 2007
To: Joey Lobrano
Right Of Way Coordinator
Department Of Public Works
From: Rebecca B. Lala, P.E. 
Traffic Engineer
Re: District 1
Perrilloux Rd. (1-I-1)
9-"Speed Limit 25" signs
4-"Advisory Speed 15" signs (Yellow w/ Black Letters)

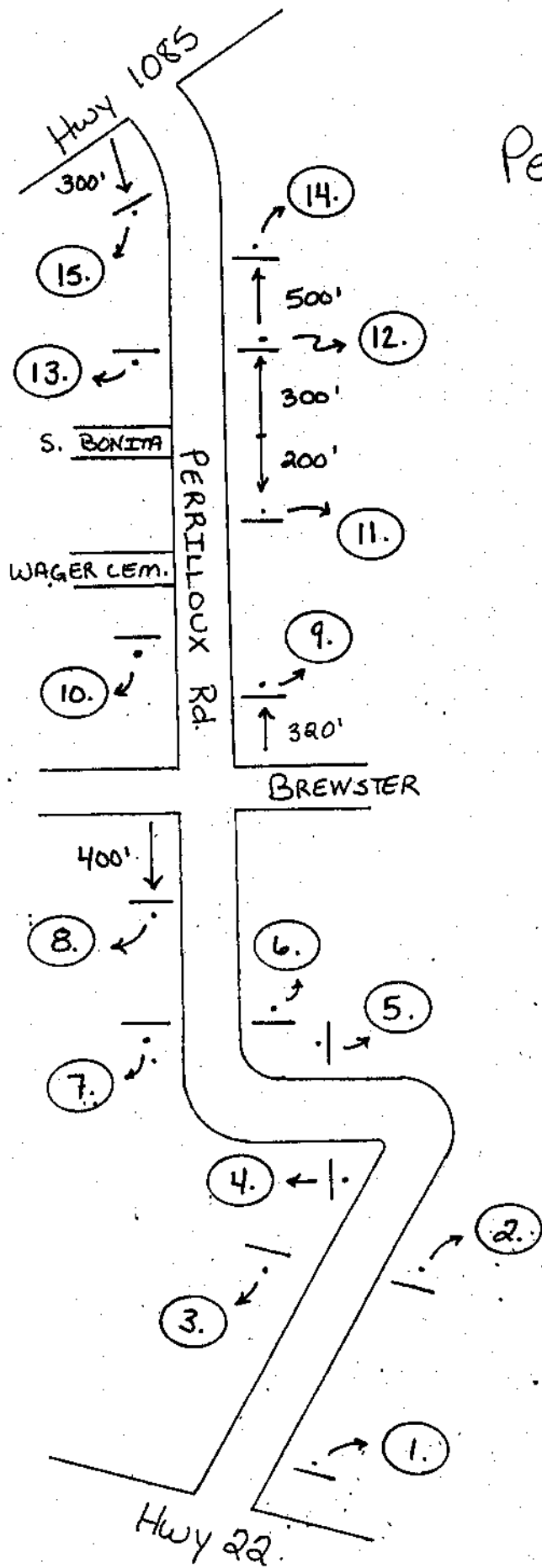
The Department of Engineering recommends the installation of 9 "Speed Limit 25" signs and 4 "Advisory Speed 15" signs. Signage to be changed from existing "Speed Limit 35" to "Speed Limit 25".

1. Replace: existing "Speed Limit 35" sign with a "Speed Limit 25" sign located near the intersection of Perrilloux/Hwy 22
2. Replace: "Speed Limit 15" sign located below the "Left Curve" sign with an "Advisory Speed 15" sign (Yellow w/ Black Letters).
3. Replace: existing "Speed Limit 35" sign with a "Speed Limit 25" sign located at across from the "Left Curve" sign.
- 4.-5. Replace: 2 "Speed Limit 15" signs located below the 2 "Left Curve" signs with 2 "Advisory Speed 15" sign (Yellow w/ Black Letters).
6. Replace: existing "Speed Limit 35" sign with a "Speed Limit 25" sign located at across from the "Left Curve" sign.
7. Replace: "Speed Limit 15" sign located below the "Left Curve" sign with a "Advisory Speed 15" sign (Yellow w/ Black Letters).

8. Replace: existing "Speed Limit 35" sign with a "Speed Limit 25" sign located 400' south of the Perrilloux/Brewster intersection.
9. Straighten: existing "Speed Limit 25" sign located 320' north of the Perrilloux/Brewster intersection.
10. Straighten: existing "Speed Limit 25" sign located just south of Wager Cem. Rd.
11. Replace: existing "Speed Limit 35" sign with a "Speed Limit 25" sign located 200' south of S. Bonita.
- 12.-13. Replace: existing 2 "Speed Limit 35" signs with a 2 "Speed Limit 25" signs located 300' north of S. Bonita.
14. Replace: existing "Speed Limit 35" sign with a "Speed Limit 25" sign located 500' north of Job #12.
15. Install: "Speed Limit 25" sign 300' south of Hwy 1085 facing north.

Please install signs in accordance with MUTCD standards and see the attached sketch.
Thank you for your assistance. If you have any questions, please let me know.

Xc: Councilman Marty Dean
Joseph M. Gustafson, Parish Engineer
Michael Spiehler, Traffic Data Tech.



Perrilloux Rd.
 1-I-1
 District 1