

ST. TAMMANY PARISH COUNCIL

ORDINANCE

ORDINANCE CALENDAR NO. 3680

ORDINANCE COUNCIL SERIES NO. _____

COUNCIL SPONSOR: MR. GOULD

PROVIDED BY: COUNCIL OFFICE

INTRODUCED BY MR. GOULD

SECONDED BY MR. STEFANCIK

ON THE 4TH DAY OF OCTOBER 2007

ORDINANCE ESTABLISHING THE PLACEMENT OF STOP SIGNS ON DOVE PARK ROAD (4-D-1) WARD 4, DISTRICT 5.

WHEREAS, St. Tammany Parish Government is charged with protecting the safety and general welfare of citizens of the parish; and

WHEREAS, St. Tammany Parish has experienced an increase in traffic on Dove Park Road warranting a stop intersection at the location of a sharp curve on said roadway; and

WHEREAS, affected citizens have requested measures be taken to address this traffic control issue on a parish road.

THE PARISH OF ST. TAMMANY HEREBY ORDAINS, that

SECTION I: A stop intersection is established on Dove Park Road (4-D-1), as indicated on the attached traffic plan by the Department of Engineering (Ward 4, District 5).

SECTION II: The Parish Department of Public Works is directed to post the appropriate signs at these locations.

SECTION III: If any provision of this ordinance shall be held to be invalid, such invalidity shall not affect any other provision herein which can be given effect without the invalid provision and to this end the provisions of this ordinance are hereby declared to be severable.

SECTION IV: All ordinances or parts of ordinances in conflict herewith are hereby repealed.

SECTION IV: This ordinance shall become effective immediately upon final adoption.

MOVED FOR ADOPTION BY: _____, SECONDED BY: _____

WHEREUPON THIS ORDINANCE WAS SUBMITTED TO A VOTE AND RESULTED IN THE FOLLOWING:

YEAS:

NAYS:

ABSTAIN:

ABSENT:

THIS ORDINANCE WAS DECLARED DULY ADOPTED AT A REGULAR MEETING OF THE PARISH COUNCIL ON THE _____ DAY OF _____, 2007; AND BECOMES ORDINANCE COUNCIL SERIES NO. _____.

ATTEST:

DIANE HUESCHEN, COUNCIL CLERK

BARRY BAGERT, COUNCIL CHAIRMAN

KEVIN C. DAVIS, PARISH PRESIDENT

Published Introduction OCTOBER 18, 2007
Published Adoption on _____, 2007
Delivered to Parish President _____, 2007 @ _____
Returned to Council Clerk on _____, 2007 @ _____

ADMINISTRATIVE COMMENT

Reference No.: 3680

Administrative Department: Engineering

PURPOSE: Per recommendation of Department of Engineering, the placement of "Stop" signs be installed on Dove Park Road.

RECOMMENDATION: The Department of Engineering recommends the installation of "Stop" signs, be installed along the sharp curve located on Dove Park Road in District 5.

9

INTER OFFICE



*Kevin Davis
Parish President*

MEMORANDUM

**ST. TAMMANY PARISH GOVERNMENT
DEPARTMENT OF ENGINEERING**

Date: September 14, 2007

To: Joey Lobrano
Right Of Way Coordinator
Department Of Public Works

From: Rebecca B. Lala, P.E.
Traffic Engineer

Re: District 5
Dove Park Rd. (4-D-1)
2-"STOP" signs
2-"STOP AHEAD" signs (W3-1*)



The Department of Engineering recommends the installation of "Stop" signs, installed along the sharp curve located on Dove Park Rd. in District 5.

1. Install "STOP AHEAD" sign (W3-1*) on Dove Park Rd. 75' east of existing "Dangerous Curve" sign, facing east.
2. Install "STOP" sign on Dove Park Rd. 30' west of gravel driveway, facing east.
3. Install "STOP" sign on Dove Park Rd. 60' south of mailbox 1170, facing north.
4. Install: "STOP AHEAD" sign on Dove Park Rd. 95' north of mailbox 1130, facing north.

Please install signs in accordance with MUTCD standards. Thank you for your assistance. If you have any questions, please let me know.

cc: Councilman Marty Gould
Joseph M. Gustafson, Parish Engineer
Michael Spiehler, Traffic Data Tech.

Dove PARK "STOP"

H-D-1

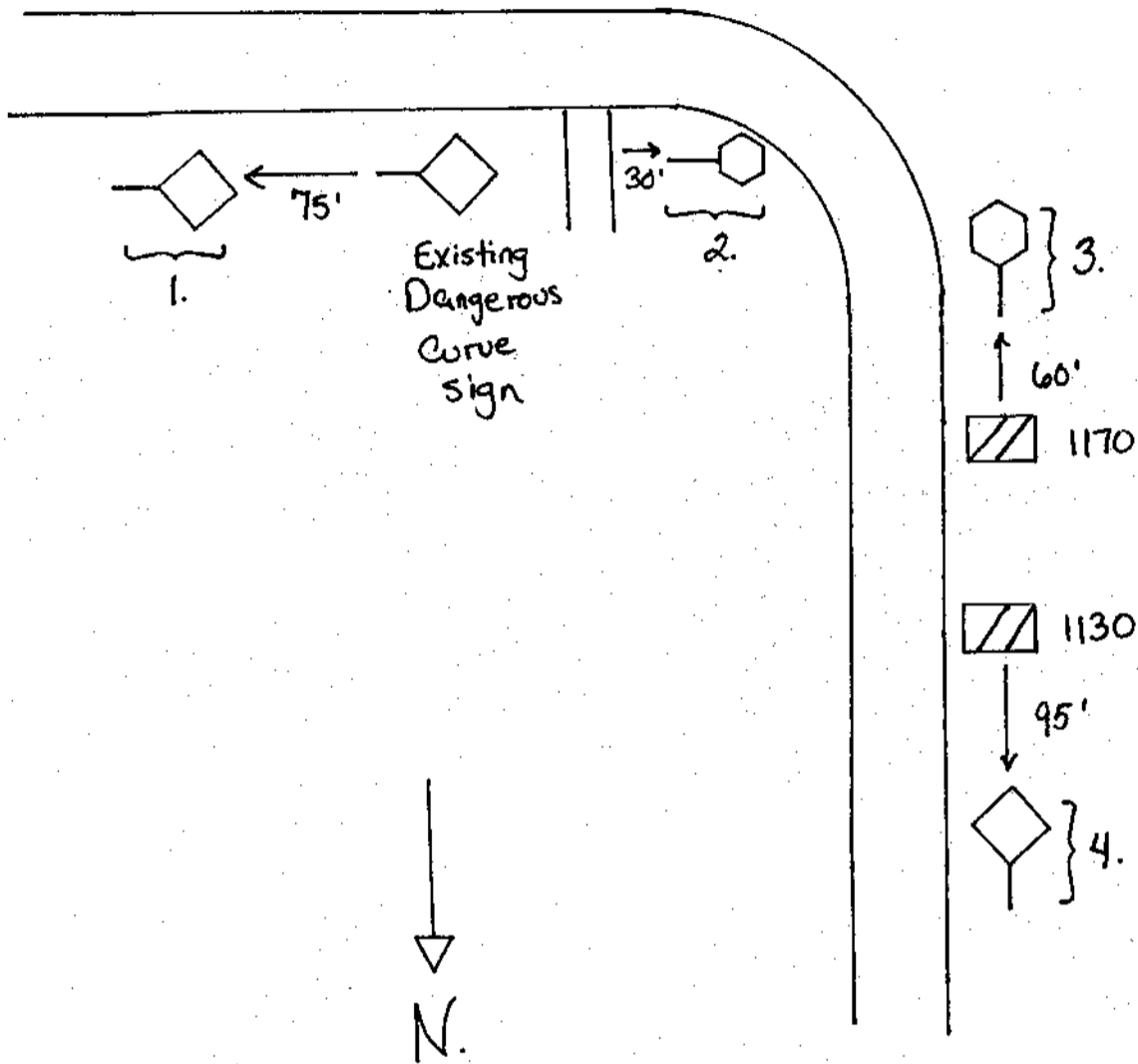
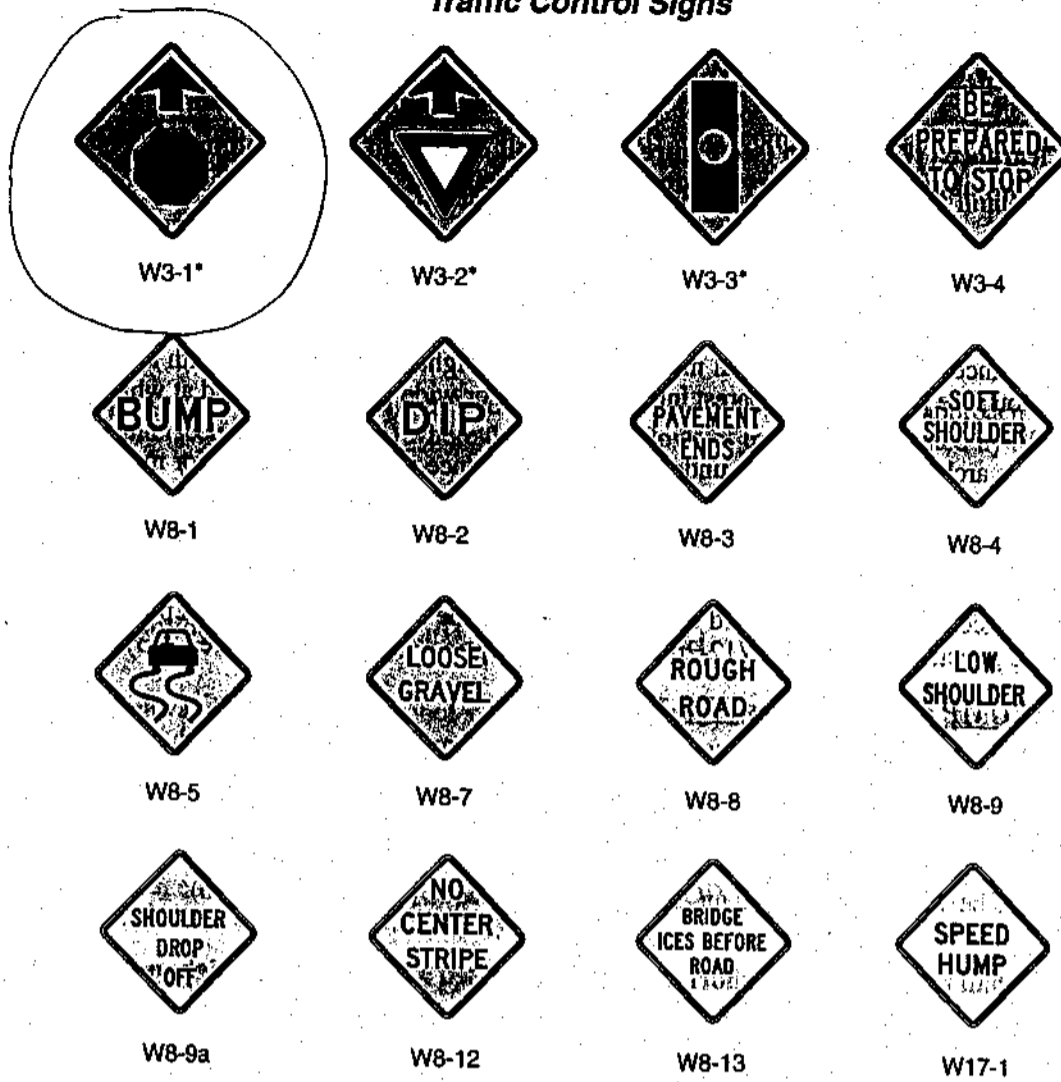


Figure 2C-4. Roadway Condition and Advance Traffic Control Signs



*An optional word message sign is shown in the "Standard Highway Signs" book.

Option:

An Advisory Speed plaque (see Section 2C.46) may be used when the change in roadway condition requires a reduced speed.

Section 2C.26 Shoulder Signs (W8-4, W8-9, and W8-9a)

Option:

The SOFT SHOULDER (W8-4) sign (see Figure 2C-4) may be used to warn of a soft shoulder condition.

The LOW SHOULDER (W8-9) sign (see Figure 2C-4) may be used to warn of a shoulder condition where there is an elevation difference of less than 75 mm (3 in) between the shoulder and the travel lane.

Guidance:

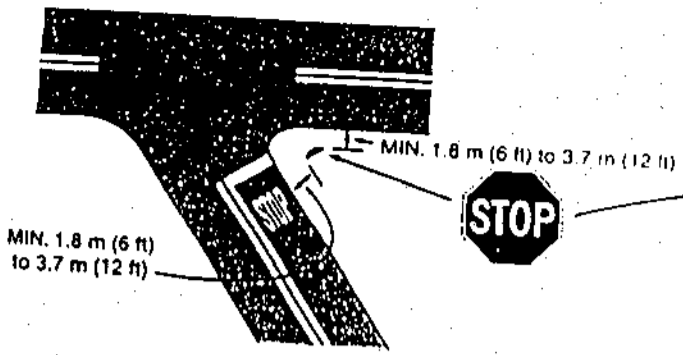
The SHOULDER DROP OFF (W8-9a) sign (see Figure 2C-4) should be used when an unprotected shoulder drop-off, adjacent to the travel lane, exceeds 75 mm (3 in) in depth for a significant continuous length along the roadway, based on engineering judgment.

Additional shoulder signs should be placed at appropriate intervals along the road where the condition continually exists.

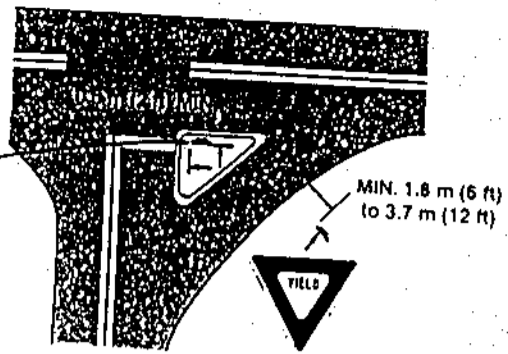
Standard:

When used, shoulder signs shall be placed in advance of the condition (see Table 2C-4).

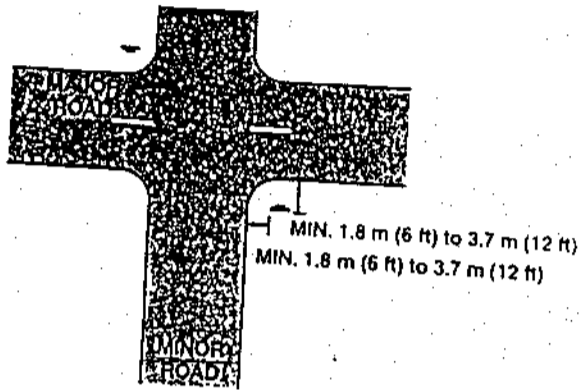
Figure 2A-2. Examples of Locations for Some Typical Signs at Intersections.



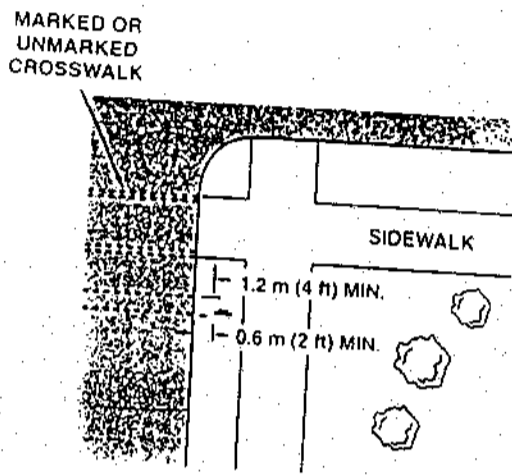
ACUTE ANGLE INTERSECTION



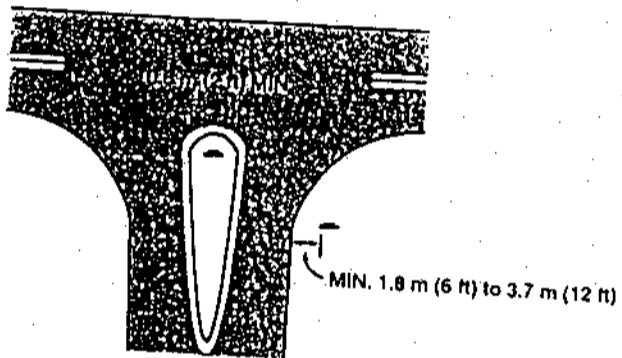
CHANNELIZED INTERSECTION



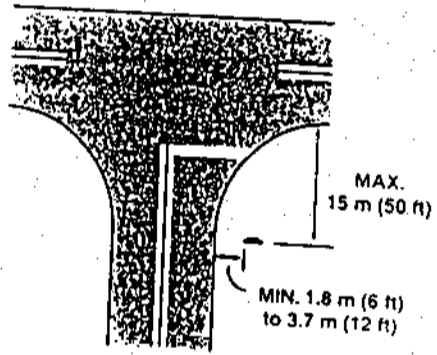
MINOR CROSSROAD



URBAN INTERSECTION



DIVISIONAL ISLAND



WIDE THROAT INTERSECTION

Note: Lateral offset is a minimum of 1.8 m (6 ft) measured from the edge of the shoulder, or 3.7 m (12 ft) measured from the edge of the traveled way. See Section 2A.19 for lower minimums that may be used in urban areas, or where lateral offset space is limited.