

ST. TAMMANY PARISH COUNCIL

ORDINANCE

ORDINANCE CALENDAR NO. 3649

ORDINANCE COUNCIL SERIES NO. \_\_\_\_\_

COUNCIL SPONSOR MR. DEAN

PROVIDED BY LEGAL

INTRODUCED BY: MR. STEFANCIK

SECONDED BY: MR. BURKHALTER

ON THE 6<sup>TH</sup> DAY OF SEPTEMBER 2007

ORDINANCE AUTHORIZING THE PARISH OF ST. TAMMANY THROUGH THE OFFICE OF THE PARISH PRESIDENT TO ACCEPT THE DONATION OF A CERTAIN PIECE OF PROPERTY BY THE LOUISIANA DEPARTMENT OF TRANSPORTATION AND DEVELOPMENT, LYING AND SITUATED ON THE SOUTH SIDE OF I-12, JUST EAST OF THE FORMER REST AREA BORDERING THE TCHEFUNCTA RIVER.

THE PARISH OF ST. TAMMANY HEREBY ORDAINS that:

SECTION 1. The office of the Parish President is authorized to accept the donation of a certain piece of property by the Louisiana Department of Transportation and Development, lying and situated on the south side of I-12, just east at the former rest area bordering the Tchefuncta River. as set forth in Exhibit A, attached hereto and made a part hereof.

SECTION 2. The property donated herein consists of 12.89 acres, or 561,317.34 square feet, as more accurately set forth in Exhibit A, attached hereto, and is required to improve traffic along the Highway 21 corridor.

SECTION 3. The Parish President and/or CAO are hereby authorized to execute any and all documents necessary in connection with the accept the donation of the property .

SECTION 4. The Parish President and/or CAO are hereby authorized to execute any and all documents and instruments in furtherance of the above on behalf of St. Tammany Parish.

SEVERABILITY: If any provision of this ordinance shall be held to be invalid, such invalidity shall not affect any other provision herein which can be given effect without the invalid provision and to this end the provisions of this ordinance are hereby declared to be severable.

REPEAL: All ordinances or parts of ordinances in conflict herewith are hereby repealed.

DATE OF ENACTMENT: This ordinance shall become effective fifteen (15) days after adoption.

MOVED FOR ADOPTION BY \_\_\_\_\_ SECONDED BY \_\_\_\_\_

WHEREUPON THIS ORDINANCE WAS SUBMITTED TO A VOTE AND RESULTED IN THE FOLLOWING:

YEAS:

NAYS:

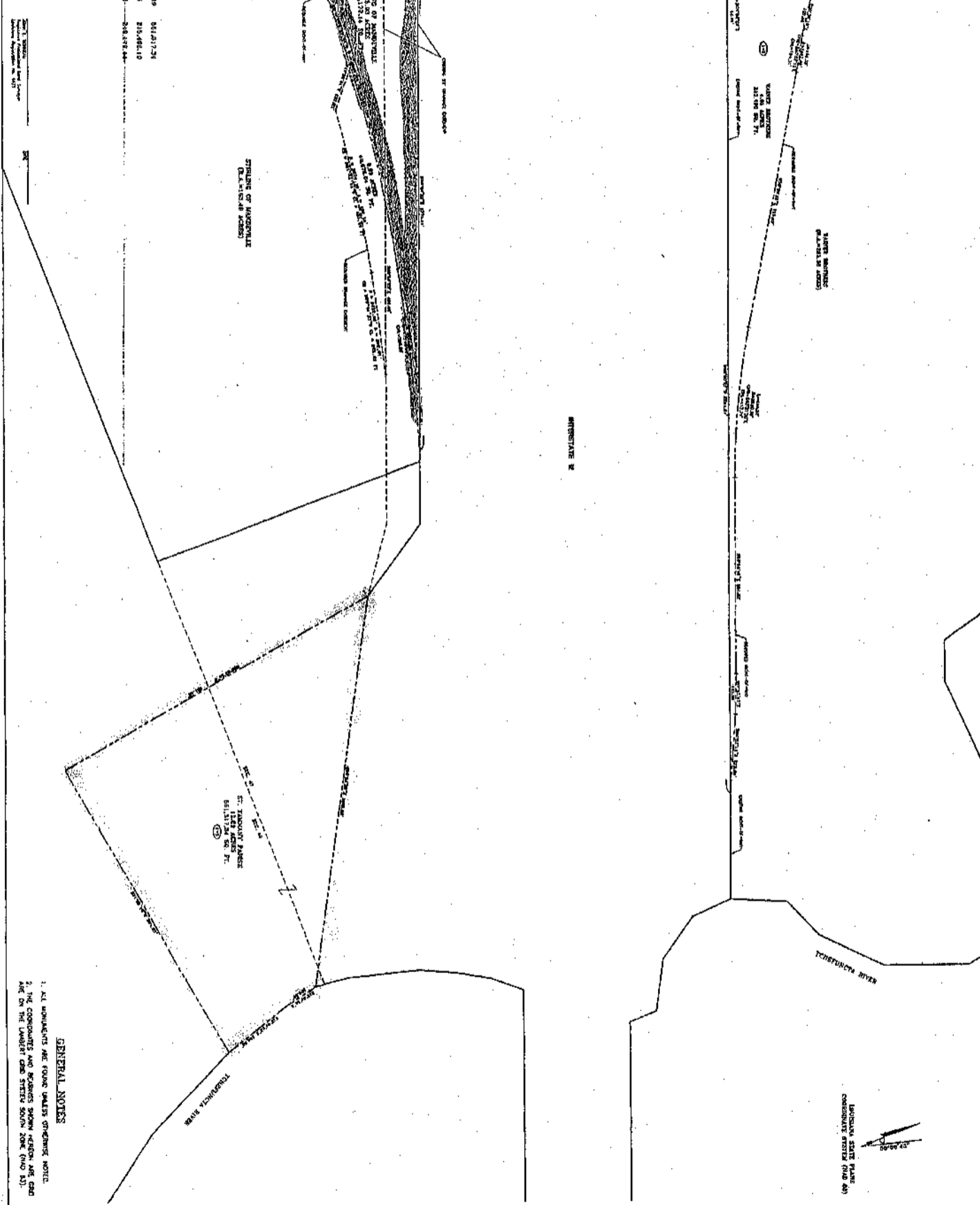
ABSTAIN:

ABSENT:

**Professional Land Surveyors - Planners - Consultants**  
**JOHN E. BONNEAU & ASSOCIATES, INC.**  
 1229 MARKET AVENUE, SUITE 100, ST. TAMMANY, LA 70082  
 (504) 885-1111 FAX (504) 885-1112  
 www.jebon.com

**SURVEYOR'S INFORMATION**

1-3	ST. TAMMANY PARISH	1229	06121724
1-2	MARKET SERVICES	439	21548110
1-1	STATION OF HANDEWILLE	0.00	24837844



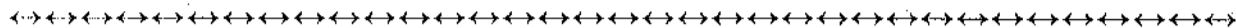
**GENERAL NOTES**  
 1. ALL MONUMENTS ARE FOUND UNLESS OTHERWISE NOTED.  
 2. THE CORNERS AND BOUNDARIES SHOWN ARE AS FOUND AND ON THE BASIS OF THE SURVEY DATA SHOWN THEREON (AND NOT OTHERWISE).

				DESIGNED BY: [ ] CHECKED BY: [ ] REVISIONS BY: [ ] DATE: [ ] SHEET: [ ]	PROJECT: ST. TAMMANY NONE NONE
INTERSTATE 12 INTERCHANGE INTERSTATE 12 INTERCHANGE				DRAWN BY: [ ] CHECKED BY: [ ] DATE: [ ] SHEET: [ ]	PROJECT: ST. TAMMANY NONE NONE

**ADMINISTRATIVE COMMENT**

**SEPTEMBER 6, 2007**

**ITEMS OFF THE FLOOR**



Councilman Marty Dean, with concurrence of the Parish President and Department of Engineering, believes Items 1, 2 and 3 are time sensitive and require introduction off the floor in order to expedite the acquisition of I-12 rest area property to improve the flow of traffic along the Highway 21 corridor.