

ST. TAMMANY PARISH COUNCIL

ORDINANCE

ORDINANCE CALENDAR NO. 3611 ORDINANCE COUNCIL SERIES NO. _____

COUNCIL SPONSOR BAGERT/DAVIS PROVIDED BY: PLANNING

INTRODUCED BY: MR. STEFANCIK SECONDED BY: MR. BURKHALTER

ON THE 2ND DAY OF AUGUST, 2007

An Ordinance amending the official zoning map of St. Tammany Parish, La, to reclassify a certain parcel located on the west side of 10th Street, east of 11th Street, north of Marquette Street and which property comprises a total of 35,406 sq. ft. of land more or less, from its present A-6 (General Multiple Family Residential) District to a LC (Light Commercial) District, Ward 4, District 4. (ZC07-07-039)

Whereas, the Zoning Commission of the Parish of St. Tammany after hearing in accordance with law, Case No. ZC07-07-039, has recommended to the Council of the Parish of St. Tammany, Louisiana, that the zoning classification of the above referenced area be changed from its present A-6 (General Multiple Family Residential) District to a LC (Light Commercial) District (see Exhibit "A") for complete boundaries.

Whereas, the St. Tammany Parish Council has held its public hearing in accordance with law:

Whereas, the St. Tammany Parish Council has found it necessary for the purpose of protecting the public health, safety and general welfare, to designate the above described property as LC (Light Commercial) District.

THE PARISH OF ST. TAMMANY HEREBY ORDAINS, in regular session convened that:

SECTION I: The zoning classification of the above described property is hereby changed from its present A-6 (General Multiple Family Residential) District to a LC (Light Commercial) District.

SECTION II: The official zoning map of the Parish of St. Tammany shall be and is hereby amended to incorporate the zoning reclassification specified in Section I hereof.

REPEAL: All Ordinances or parts of Ordinances in conflict herewith are hereby repealed.

SEVERABILITY: If any provision of this Ordinance shall be held to be invalid, such invalidity shall not affect other provisions herein which can be given effect without the invalid provision and to this end the provisions of this Ordinance are hereby declared to be severable.

EFFECTIVE DATE: This Ordinance shall become effective fifteen (15) days after adoption.

MOVED FOR ADOPTION BY: _____, SECONDED BY: _____

WHEREUPON THIS ORDINANCE WAS SUBMITTED TO A VOTE AND RESULTED IN THE FOLLOWING:

YEAS:

NAYS:

ABSTAIN:

ABSENT:

EXHIBIT "A"

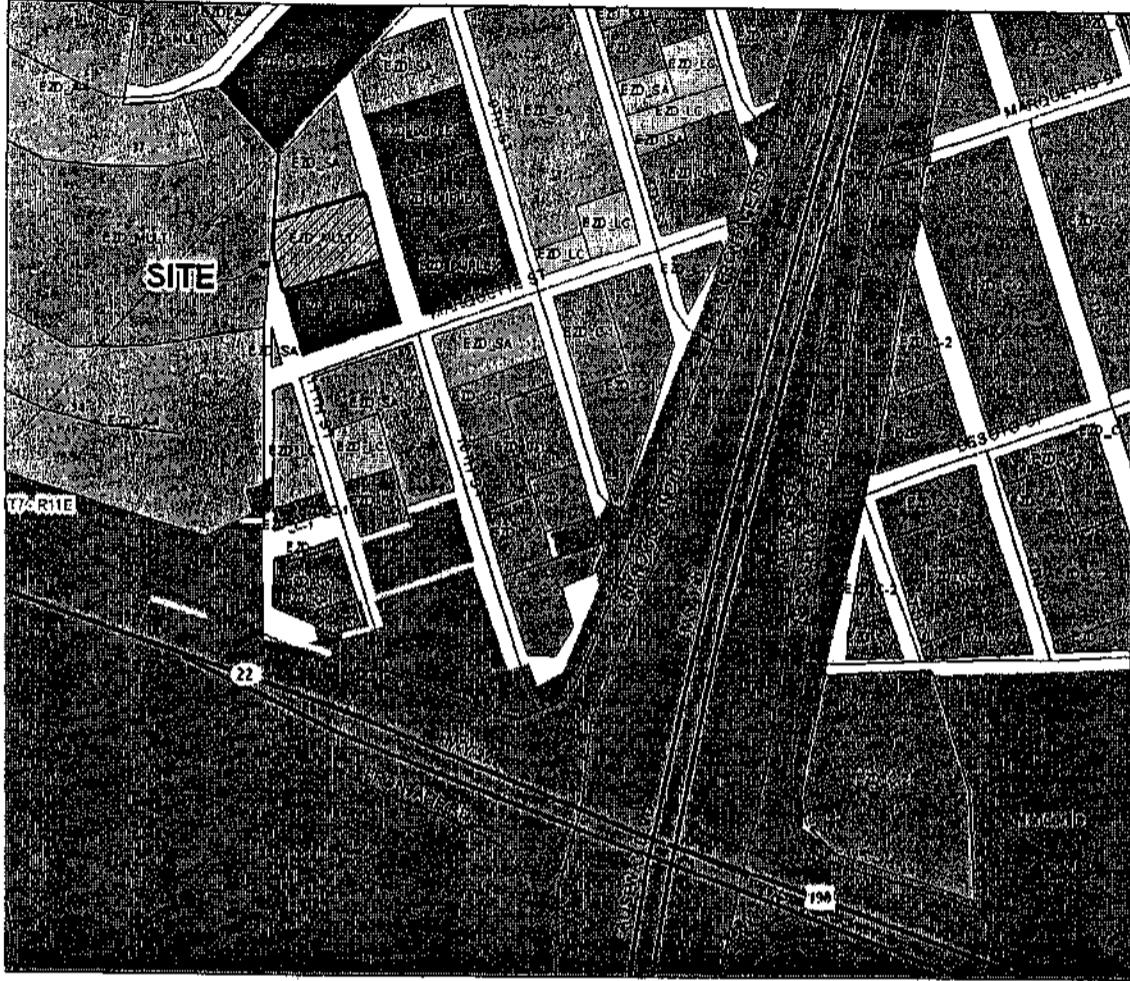
3611

ZC07-07-039

THOSE CERTAIN PIECES OR PORTIONS OF GROUND, together with all the buildings and improvements thereon, and all the rights, ways, privileges, servitudes, appurtenances and advantages thereunto belonging or in anywise appertaining, situated in the Parish of St. Tammany, State of Louisiana, in CHINCHUBA SUBDIVISION, as per resubdivision by Wilson-Pope, PLS, dated March 25, 1996, revised June 12, 1996 and August 1, 1996, filed August 23, 1996 as Map No. 1460 in the Office of the Clerk of Court for St. Tammany Parish, designated as:

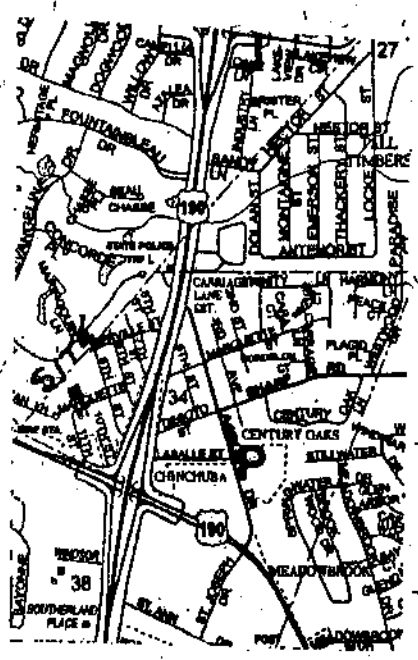
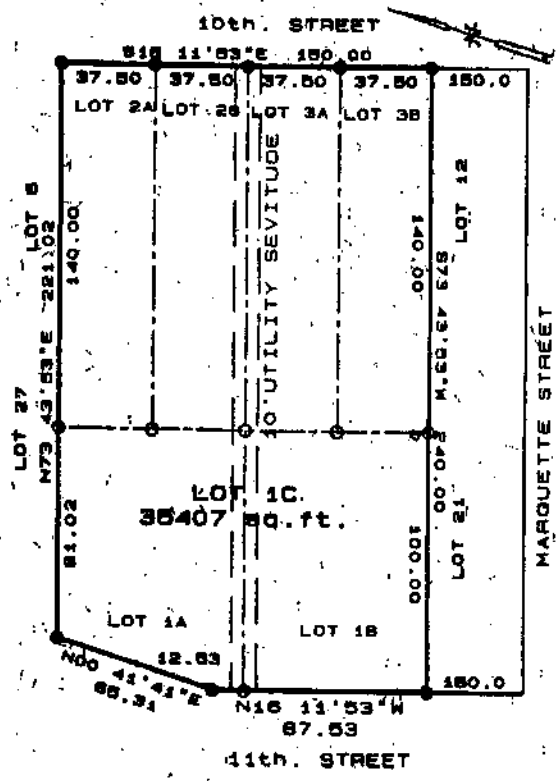
Lots 1A, 1B, 2A, 2B, 3A, 3B, Square 10, CHINCHUBA SUBDIVISION, Parish of St. Tammany, State of Louisiana.

CASE NO.: ZC07-07-039 3611
PETITIONER: Jeffrey H. St. Romain
OWNER: 11th St. Development, LLC
REQUESTED CHANGE: From A-6 (General Multiple Family Residential) District to LC (Light Commercial) District
LOCATION: Parcel located on the west side of 10th Street, east of 11th Street, north of Marquette Street; S34, T7S, R11E; Ward 4, District 4
SIZE: 35,406 sq. ft.



A Resubdivision of LOTS 1A, 1B, 2A, 2B, 3A, & 3B, LOT 1-C, 2-C, 3-C, 4-C, 5-C, 6-C, 7-C, 8-C, 9-C, 10-C, 11-C, 12-C, 13-C, 14-C, 15-C, 16-C, 17-C, 18-C, 19-C, 20-C, 21-C, 22-C, 23-C, 24-C, 25-C, 26-C, 27-C, 28-C, 29-C, 30-C, 31-C, 32-C, 33-C, 34-C, 35-C, 36-C, 37-C, 38-C, 39-C, 40-C, 41-C, 42-C, 43-C, 44-C, 45-C, 46-C, 47-C, 48-C, 49-C, 50-C, 51-C, 52-C, 53-C, 54-C, 55-C, 56-C, 57-C, 58-C, 59-C, 60-C, 61-C, 62-C, 63-C, 64-C, 65-C, 66-C, 67-C, 68-C, 69-C, 70-C, 71-C, 72-C, 73-C, 74-C, 75-C, 76-C, 77-C, 78-C, 79-C, 80-C, 81-C, 82-C, 83-C, 84-C, 85-C, 86-C, 87-C, 88-C, 89-C, 90-C, 91-C, 92-C, 93-C, 94-C, 95-C, 96-C, 97-C, 98-C, 99-C, 100-C, located in Section 34, Township 7 South, Range 11 East, St. Tammany Parish, Louisiana into LOT 1C.

3611



Ron Kille
 SECRETARY, ST. TAMMANY PARISH PLANNING COMMISSION

John Hildebrand
 ST. TAMMANY PARISH DEPARTMENT OF ENGINEERING

4-13-2006 4192C
 DATE FILED: MAP FILE NO.

Letausha V. Goodley

CERTIFIED TO: ST. TAMMANY PARISH CLERK OF COURT
 JEFFREY II. ST.ROMAIN

- LEGEND:
- SET 1/2" IRON ROD
 - FOUND IRON ROD
 - FOUND OLD WOOD
 - FENCE
 - BEARING RECORD
 - SETBACK LINES
 - FRONT SIDE
 - REAR STREET

This survey is based upon the description furnished by the client. There may be other restrictions not shown on this plat that may exist in the public records. There are no visible encroachments existing except where shown hereon. If not otherwise noted, Elevations refer to NGVD 1929 datum.

I, hereby certify that this plat is based on a physical survey made on the ground and in accordance with the standards of a SUBURBAN survey and the applicable standards of practice cited in LAC 48:142. Signature must be in ink and made by the undersigned for this plat to be certified.

CLASS TYPE	"C"	CPN: 225205 0240
BOUNDARY	24 MAR 05	FIRM DATE: 16 AUG 95
FORMBOARDS		FIRM ZONE: "C"
SLAB TIE		BASE FLOOD:
AS-BUILT		REVISED:
JOB NO.	11055A	SCALE: 1 inch = 50 ft

STATE OF LOUISIANA
 BRUCE W. WILSON
WILSON & SONS, INC.
 LOUISIANA REGISTERED SURVEYORS NO. 388
 MANDEVILLE, LOUISIANA 70448
 TEL: (985) 826-5551 FAX: (985) 826-5528