

ORDINANCE CALENDAR NUMBER: 3984

ORDINANCE COUNCIL SERIES NO. 08-

PAGE 2 OF 2

EFFECTIVE DATE: This Ordinance shall be come effective fifteen (15) days after adoption.

WHERE UPON THIS ORDINANCE WAS SUBMITTED TO A VOTE AND RESULTED IN THE FOLLOWING:

MOVED FOR ADOPTION BY: _____, SECONDED BY: _____

YEAS:

NAYS:

ABSTAIN:

ABSENT:

THIS ORDINANCE WAS DECLARED DULY ADOPTED AT A REGULAR MEETING OF THE PARISH COUNCIL ON THE _____ DAY OF _____ 2008; AND BECOMES ORDINANCE COUNCIL SERIES NO. 08-

JERRY BINDER, COUNCIL CHAIRMAN

ATTEST:

THERESA FORD, COUNCIL CLERK

KEVIN DAVIS, PARISH PRESIDENT

Published introduction: _____, 2008

Published adoption on: _____, 2008

Delivered to Parish President: _____, 2008 @ _____

Returned to Council Clerk: _____, 2008 @ _____

PROJECTS

LA HIGHWAY 1077 - 4 LANE - I-12 TO 1085

AIRPORT ROAD - SLIDELL CONNECTOR

HIGHWAY 1077 AND 1085 INTERSECTION

VILLAGE LANE EXTENSION

DIVERSIFIED FOOD ROAD 3

LA HIGHWAY 1077

4 LANE

I-12 TO 1085 PROJECT

State Project No. 852-03-0012
Hwy. 1077 (I-12 to Bootlegger)

Parcel 1-1 Morrison Investments, LLC

A certain piece or portion of ground situated in Section 3, Township 7 South, Range 10 East, St. Tammany Parish Louisiana, commencing at the Station 167+38.05 from State Project No. 852-03-0012 adopted baseline run North 66 degrees 15 minutes 15 seconds east a distance of 36.62 feet to a point on the easterly right-of-way line of La. Hwy. 1077 and the point of beginning.

From the point of beginning, run north 24 degrees 32 minutes 57 seconds west a distance of 819.19 feet to a point; thence leaving said right-of-way, run north 88 degrees 38 minutes 36 seconds east a distance of 28.67 feet to a point; thence run south 24 degrees 31 minutes 19 seconds east a distance of 808.82 feet to a point; thence run south 67 degrees 28 minutes 09 seconds west a distance of 25.99 feet back to the point of beginning.

Said piece or portion of ground contains 0.49 acres (21,296.70 sq. ft.) more or less.

Parcel 1-2 Levere C. Montgomery, III

A certain piece of portion of ground situated in Section 3, Township 7 South, Range 10 East, St. Tammany Parish, Louisiana, commencing at the Station 167+42.83 from State Project No. 852-03-0012 adopted baseline run South 66 degrees 17 minutes 18 seconds west a distance of 23.46 feet to a point on the westerly right-of-way line of La. Hwy. 1077 and the point of beginning.

From the point of beginning and leaving said right-of-way, run south 66 degrees 16 minutes 41 seconds west a distance of 24.03 feet to a point; thence run north 24 degrees 31 minutes 19 seconds west a distance of 787.06 feet to a point; thence run north 00 degrees 48 minutes 34 seconds west a distance of 58.75 feet to a point; thence run south 24 degrees 32 minutes 57 seconds east a distance of 841.34 feet back to the point of beginning.

Said piece or portion of ground contains 0.45 acres (19,405.75 sq. ft.) more or less.

Parcel 2-2 Joyce Hale Burns, et al

A certain piece or portion of ground situated in Section 3, Township 7 South, Range 10 East, St. Tammany Parish, Louisiana, commencing at the Station 175+84.57 from State Project No. 852-03-0012 adopted baseline run south 65 degrees 28 minutes 55 seconds west a distance of 31.36 feet to a point on the westerly right-of-way line of La. Hwy. 1077 and the point of beginning.

From the point of beginning and leaving said right-of-way, run south 00 degrees 48 minutes 34 seconds east a distance of 58.75 feet to a point; thence run north 24 degrees 31 minutes 19 seconds west a distance of 1,212.05 feet to a point; thence run north 58 degrees 19 minutes 47 seconds west a distance of 211.21 feet to a point; thence run north 00 degrees 39 minutes 56 seconds west a distance of 118.15 feet to a point; thence run north 89 degrees 55 minutes 27 seconds east a distance of 28.02 feet to a point; thence run south 63 degrees 06 minutes 54 seconds east a distance of 111.80 feet to a point; thence run south 18 degrees 05 minutes 19 seconds east a distance of 22.51 feet to a point; thence run south 24 degrees 32 minutes 57 seconds east a distance of 1,320.45 feet back to the point of beginning.

Said piece of portion of ground contains 1.17 acres (50,912.83 sq. ft.) more or less.

Parcel 3-1 Goodbee Land Company, LLC

A certain piece or portion of ground situated in Section 3, Township 7 South, Range 10 East, St. Tammany Parish, Louisiana, commencing at the Station 183+72.26 from State Project No. 852-03-0012 adopted baseline run north 65 degrees 28 minutes 55 seconds east a distance of 28.20 feet to a point on the easterly right-of-way line of La. Hwy. 1077 and the point of beginning.

From the point of beginning, run north 24 degrees 32 minutes 57 seconds west a distance of 506.16 feet to a point; thence run north 32 degrees 53 minutes 18 seconds east a distance of 42.66 feet to a point; thence leaving said right-of-way, run south 58 degrees 14 minutes 09 seconds east a distance of 96.36 feet to a point; thence, run south 28 degrees 48 minutes 09 seconds west a distance of 43.94 feet to a point; thence run south 05 degrees 46 minutes 41 seconds west a distance of 53.91 feet to a point; thence run south 24 degrees 31 minutes 19 seconds east a distance of 387.85 feet to a point; thence run south 89 degrees 00 minutes 53 seconds west a distance of 29.17 feet back to the point of beginning.

Said piece or portion of ground contains 0.43 acres (18,632.26 sq. ft.) more or less.

AIRPORT ROAD
SLIDELL CONNECTOR
PROJECT

DESCRIPTION OF PARCEL 2-1
A PORTION OF GROUND LOCATED IN SECTIONS 20 & 21, T 8 S - R 14 E,
GREENSBURG LAND DISTRICT, ST. TAMMANY PARISH, LOUISIANA

DESCRIPTION OF A 12.072 ACRE PARCEL OF LAND LOCATED IN SECTIONS 20 & 21, T 8 S - R 14 E, GREENSBURG LAND DISTRICT, PARISH OF ST. TAMMANY, STATE OF LOUISIANA. SAID 12.072 ACRE PARCEL BEING MORE FULLY DESCRIBED AS FOLLOWS:

BEGINNING AT A POINT, SAID POINT BEING SOUTH 89°38'09" WEST AND 2620.60 FEET FROM THE SOUTHEAST CORNER OF THE SOUTHEAST QUARTER OF SECTION 20, T 8 S - R 14 E, GREENSBURG LAND DISTRICT, ST. TAMMANY PARISH, LOUISIANA;

THENCE NORTH 20°30'19" EAST FOR A DISTANCE OF 7.14 FEET TO A POINT AND CORNER;

THENCE, ALONG A TANGENT CURVE TO THE RIGHT HAVING A RADIUS OF 2150.00 FEET, THE LONG CHORD OF WHICH BEARS NORTH 47°46'34" EAST FOR A DISTANCE OF 1967.84 FEET FOR AN ARC LENGTH OF 2043.95 FEET TO A POINT;

THENCE NORTH 89°38'09" EAST FOR A DISTANCE OF 1141.91 FEET TO A POINT AND CORNER;

THENCE NORTH 89°08'41" EAST FOR A DISTANCE OF 1327.45 FEET TO A POINT AND CORNER;

THENCE NORTH 88°48'42" EAST FOR A DISTANCE OF 416.73 FEET TO A POINT AND CORNER;

THENCE SOUTH 21°04'07" EAST FOR A DISTANCE OF 82.47 FEET TO A POINT AND CORNER;

THENCE SOUTH 89°08'27" WEST FOR A DISTANCE OF 2389.66 FEET TO A POINT AND CORNER;

THENCE, ALONG A TANGENT CURVE TO THE LEFT WITH A RADIUS OF 2000.00 FEET, THE CHORD OF WHICH BEARS SOUTH 55°33'47" WEST FOR A DISTANCE OF 2212.28 FEET; THENCE ALONG THE ARC OF SAID CURVE FOR A DISTANCE OF 2344.18 FEET TO A POINT AND CORNER;

THENCE SOUTH 89°38'09" WEST FOR A DISTANCE OF 161.25 FEET TO THE POINT OF BEGINNING.

CONTAINING: 525,836 SQUARE FEET OR 12.072 ACRES OF LAND, MORE OR LESS.

**DESCRIPTION OF PARCEL 3-1
A PORTION OF GROUND LOCATED IN SECTION 20, T 8 S - R 14 E,
GREENSBURG LAND DISTRICT, ST. TAMMANY PARISH, LOUISIANA**

DESCRIPTION OF A 1.575 ACRE PARCEL OF LAND LOCATED IN SECTION 20, T 8 S - R 14 E, GREENSBURG LAND DISTRICT, PARISH OF ST. TAMMANY, STATE OF LOUISIANA. SAID 1.575 ACRE PARCEL BEING MORE FULLY DESCRIBED AS FOLLOWS:

BEGINNING AT A POINT, SAID POINT BEING NORTH 89°38'09" EAST AND 167.74 FEET FROM THE SOUTHWEST CORNER OF THE NORTHEAST QUARTER OF SECTION 20, T 8 S - R 14 E, GREENSBURG LAND DISTRICT, ST. TAMMANY PARISH, LOUISIANA;

THENCE, ALONG A CURVE TO THE RIGHT HAVING A RADIUS OF 2150.00 FEET, THE LONG CHORD OF WHICH BEARS NORTH 82°04'33" EAST FOR A DISTANCE OF 528.89 FEET FOR AN ARC LENGTH OF 530.23 FEET TO A POINT;

THENCE NORTH 89°08'27" EAST FOR A DISTANCE OF 617.04 FEET TO A POINT AND CORNER;

THENCE SOUTH 00°49'16" EAST FOR A DISTANCE OF 74.91 FEET TO A POINT AND CORNER;

THENCE SOUTH 89°38'09" WEST FOR A DISTANCE OF 1141.91 FEET TO THE POINT OF BEGINNING.

CONTAINING: 68,601 SQUARE FEET OR 1.575 ACRES OF LAND, MORE OR LESS.

DESCRIPTION OF PARCEL 4-1
A PORTION OF GROUND LOCATED IN SECTION 21, T 8 S - R 14 E,
GREENSBURG LAND DISTRICT, ST. TAMMANY PARISH, LOUISIANA

DESCRIPTION OF A 2.284 ACRE PARCEL OF LAND LOCATED IN SECTION 21, T 8 S - R 14 E, GREENSBURG LAND DISTRICT, PARISH OF ST. TAMMANY, STATE OF LOUISIANA. SAID 2.284 ACRE PARCEL BEING MORE FULLY DESCRIBED AS FOLLOWS:

BEGINNING AT A POINT, SAID POINT BEING SOUTH 00°49'16" EAST AND 1334.69 FEET FROM THE CORNER COMMON TO SECTIONS 16, 17, 20 & 21, T 8 S - R 14 E, GREENSBURG LAND DISTRICT, ST. TAMMANY PARISH, LOUISIANA;

THENCE NORTH 89°08'27" EAST FOR A DISTANCE OF 1327.50 FEET TO A POINT AND CORNER;

THENCE SOUTH 00°46'55" EAST FOR A DISTANCE OF 75.00 FEET TO A POINT AND CORNER;

THENCE SOUTH 89°08'41" WEST FOR A DISTANCE OF 1327.45 FEET TO A POINT AND CORNER;

THENCE NORTH 00°49'16" WEST FOR A DISTANCE OF 74.91 FEET THE POINT OF BEGINNING.

CONTAINING: 99,503 SQUARE FEET OR 2.284 ACRES OF LAND, MORE OR LESS.

**DESCRIPTION OF PARCEL 4-2
A PORTION OF GROUND LOCATED IN SECTION 21, T 8 S - R 14 E,
GREENSBURG LAND DISTRICT, ST. TAMMANY PARISH, LOUISIANA**

DESCRIPTION OF A 0.325 ACRE PARCEL OF LAND LOCATED IN SECTION 21, T 8 S - R 14 E, GREENSBURG LAND DISTRICT, PARISH OF ST. TAMMANY, STATE OF LOUISIANA. SAID 0.325 ACRE PARCEL BEING MORE FULLY DESCRIBED AS FOLLOWS:

BEGINNING AT A POINT, SAID POINT BEING SOUTH 00°49'16" EAST AND 1259.78 FEET AND NORTH 89°08'27" EAST AND 1327.50 FEET FROM THE CORNER COMMON TO SECTIONS 16, 17, 20 & 21, T 8 S - R 14 E, GREENSBURG LAND DISTRICT, ST. TAMMANY PARISH, LOUISIANA;

THENCE NORTH 89°08'27" EAST FOR A DISTANCE OF 176.70 FEET TO A POINT AND CORNER;

THENCE SOUTH 21°05'06" EAST FOR A DISTANCE OF 78.68 FEET TO A POINT AND CORNER;

THENCE SOUTH 88°48'42" WEST FOR A DISTANCE OF 204.01 FEET TO A POINT AND CORNER;

THENCE NORTH 00°46'55" WEST FOR A DISTANCE OF 75.00 FEET TO THE POINT OF BEGINNING.

CONTAINING: 14,173 SQUARE FEET OR 0.325 ACRES OF LAND, MORE OR LESS.

**DESCRIPTION OF PARCEL 4-3
A PORTION OF GROUND LOCATED IN SECTION 21, T 8 S - R 14 E,
GREENSBURG LAND DISTRICT, ST. TAMMANY PARISH, LOUISIANA**

DESCRIPTION OF A 3.871 ACRE PARCEL OF LAND LOCATED IN SECTION 21, T 8 S - R 14 E, GREENSBURG LAND DISTRICT, PARISH OF ST. TAMMANY, STATE OF LOUISIANA. SAID 3.871 ACRE PARCEL BEING MORE FULLY DESCRIBED AS FOLLOWS:

BEGINNING AT A POINT, SAID POINT BEING SOUTH 00°49'16" EAST AND 1259.78 FEET AND NORTH 89°08'27" EAST AND 1718.13 FEET FROM THE CORNER COMMON TO SECTIONS 16, 17, 20 & 21, T 8 S - R 14 E, GREENSBURG LAND DISTRICT, ST. TAMMANY PARISH, LOUISIANA;

THENCE NORTH 89°08'27" EAST FOR A DISTANCE OF 53.77 FEET TO A POINT AND CORNER;

THENCE NORTH 88°35'45" EAST FOR A DISTANCE OF 2158.93 FEET TO A POINT AND CORNER;

THENCE NORTH 85°06'04" EAST FOR A DISTANCE OF 5.92 FEET TO A POINT AND CORNER;

THENCE SOUTH 00°45'28" EAST FOR A DISTANCE OF 80.96 FEET TO A POINT AND CORNER;

THENCE SOUTH 88°48'42" WEST FOR A DISTANCE OF 2192.40 FEET TO A POINT AND CORNER;

THENCE NORTH 20°33'19" WEST FOR A DISTANCE OF 77.12 FEET TO THE POINT OF BEGINNING.

CONTAINING: 168,608 SQUARE FEET OR 3.871 ACRES OF LAND, MORE OR LESS.

**DESCRIPTION OF PARCEL 4-4
A PORTION OF GROUND LOCATED IN SECTION 21, T 8 S - R 14 E,
GREENSBURG LAND DISTRICT, ST. TAMMANY PARISH, LOUISIANA**

DESCRIPTION OF A 0.359 ACRE PARCEL OF LAND LOCATED IN SECTION 21, T 8 S - R 14 E, GREENSBURG LAND DISTRICT, PARISH OF ST. TAMMANY, STATE OF LOUISIANA. SAID 0.359 ACRE PARCEL BEING MORE FULLY DESCRIBED AS FOLLOWS:

BEGINNING AT A POINT, SAID POINT BEING SOUTH 00°49'16" EAST AND 1259.78 FEET AND NORTH 89°08'27" EAST AND 1504.20 FEET FROM THE CORNER COMMON TO SECTIONS 16, 17, 20 & 21, T 8 S - R 14 E, GREENSBURG LAND DISTRICT, ST. TAMMANY PARISH, LOUISIANA;

THENCE NORTH 89°08'27" EAST FOR A DISTANCE OF 213.92 FEET TO A POINT AND CORNER;

THENCE SOUTH 20°33'19" EAST FOR A DISTANCE OF 77.12 FEET TO A POINT AND CORNER;

THENCE SOUTH 88°48'42" WEST FOR A DISTANCE OF 212.72 FEET TO A POINT AND CORNER;

THENCE NORTH 21°05'06" WEST FOR A DISTANCE OF 78.68 FEET TO THE POINT OF BEGINNING.

CONTAINING: 15,635 SQUARE FEET OR 0.359 ACRES OF LAND, MORE OR LESS.

DESCRIPTION OF PARCEL 5-1
A PORTION OF GROUND LOCATED IN SECTION 21, T 8 S - R 14 E,
GREENSBURG LAND DISTRICT, ST. TAMMANY PARISH, LOUISIANA

DESCRIPTION OF A 4.673 ACRE PARCEL OF LAND LOCATED IN SECTION 21, T 8 S - R 14 E, GREENSBURG LAND DISTRICT, PARISH OF ST. TAMMANY, STATE OF LOUISIANA. SAID 4.673 ACRE PARCEL BEING MORE FULLY DESCRIBED AS FOLLOWS:

BEGINNING AT A POINT, SAID POINT BEING SOUTH 00°45'28" EAST AND 1195.55 FEET FROM THE NORTHWEST CORNER OF THE NORTHEAST QUARTER OF THE NORTHEAST QUARTER OF SECTION 21, T 8 S - R 14 E, GREENSBURG LAND DISTRICT, ST. TAMMANY PARISH, LOUISIANA;

THENCE NORTH 85°06'04" EAST FOR A DISTANCE OF 374.20 FEET TO A POINT AND CORNER;

THENCE NORTH 85°06'04" EAST FOR A DISTANCE OF 228.04 FEET TO A POINT AND CORNER;

THENCE NORTH 86°33'41" EAST FOR A DISTANCE OF 230.44 FEET TO A POINT AND CORNER;

THENCE, ALONG A TANGENT CURVE TO THE LEFT WITH A RADIUS OF 2925.00 FEET, THE CHORD OF WHICH BEARS NORTH 81°48'18" EAST FOR A DISTANCE OF 485.08 FEET; THENCE ALONG THE ARC OF SAID CURVE FOR A DISTANCE OF 485.63 FEET TO A POINT AND CORNER;

THENCE SOUTH 00°46'02" EAST FOR A DISTANCE OF 190.37 FEET TO A POINT AND CORNER;

THENCE SOUTH 86°33'16" WEST FOR A DISTANCE OF 285.52 FEET TO A POINT AND CORNER;

THENCE SOUTH 86°33'16" WEST FOR A DISTANCE OF 192.24 FEET TO A POINT AND CORNER;

THENCE SOUTH 86°33'41" WEST FOR A DISTANCE OF 225.30 FEET TO A POINT AND CORNER;

THENCE SOUTH 85°06'04" WEST FOR A DISTANCE OF 226.13 FEET TO A POINT AND CORNER;

THENCE SOUTH 85°06'04" WEST FOR A DISTANCE OF 384.69 FEET TO A POINT AND CORNER;

THENCE NORTH $01^{\circ}03'39''$ WEST FOR A DISTANCE OF 69.40 FEET TO A POINT AND CORNER;

THENCE NORTH $00^{\circ}45'28''$ WEST FOR A DISTANCE OF 80.96 FEET TO THE **POINT OF BEGINNING.**

CONTAINING: 203,533 SQUARE FEET OR 4.673 ACRES OF LAND, MORE OR LESS.

DESCRIPTION OF PARCEL 6-1
A PORTION OF GROUND LOCATED IN SECTION 22, T 8 S - R 14 E,
GREENSBURG LAND DISTRICT, ST. TAMMANY PARISH, LOUISIANA

DESCRIPTION OF A 5.099 ACRE PARCEL OF LAND LOCATED IN SECTION 22, T 8 S - R 14 E, GREENSBURG LAND DISTRICT, PARISH OF ST. TAMMANY, STATE OF LOUISIANA. SAID 5.099 ACRE PARCEL BEING MORE FULLY DESCRIBED AS FOLLOWS:

BEGINNING AT A POINT, SAID POINT BEING SOUTH 00°46'02" EAST AND 1080.64 FEET FROM THE CORNER COMMON TO SECTIONS 15, 16, 21 & 22, T 8 S - R 14 E, GREENSBURG LAND DISTRICT, ST. TAMMANY PARISH, LOUISIANA;

THENCE, ALONG A CURVE TO THE LEFT HAVING A RADIUS OF 2925.00 FEET, THE LONG CHORD OF WHICH BEARS NORTH 73°02'09" EAST FOR A DISTANCE OF 409.39 FEET FOR AN ARC LENGTH OF 409.73 FEET TO A POINT;

THENCE NORTH 69°03'18" EAST FOR A DISTANCE OF 273.58 FEET TO A POINT AND CORNER;

THENCE NORTH 66°25'46" EAST FOR A DISTANCE OF 762.31 FEET TO A POINT AND CORNER;

THENCE SOUTH 00°33'47" EAST FOR A DISTANCE OF 162.96 FEET TO A POINT AND CORNER;

THENCE SOUTH 66°25'46" WEST FOR A DISTANCE OF 698.62 FEET TO A POINT AND CORNER;

THENCE SOUTH 69°01'22" WEST FOR A DISTANCE OF 754.52 FEET TO A POINT AND CORNER;

THENCE NORTH 00°46'02" WEST FOR A DISTANCE OF 190.37 FEET THE **POINT OF BEGINNING.**

CONTAINING: 222,119 SQUARE FEET OR 5.099 ACRES OF LAND, MORE OR LESS.

DESCRIPTION OF PARCEL 8-2
A PORTION OF GROUND LOCATED IN SECTION 23, T 8 S - R 14 E,
GREENSBURG LAND DISTRICT, ST. TAMMANY PARISH, LOUISIANA

DESCRIPTION OF A 1.973 ACRE PARCEL OF LAND LOCATED IN SECTION 23, T 8 S - R 14 E, GREENSBURG LAND DISTRICT, PARISH OF ST. TAMMANY, STATE OF LOUISIANA. SAID 1.973 ACRE PARCEL BEING MORE FULLY DESCRIBED AS FOLLOWS:

BEGINNING AT A POINT, NORTH 89°32'03" EAST FOR A DISTANCE OF 661.32 FEET FROM THE CORNER COMMON TO SECTIONS 14, 15, 22 & 23, T 8 S - R 14 E, GREENSBURG LAND DISTRICT, ST. TAMMANY PARISH, LOUISIANA;

THENCE NORTH 89°32'03" EAST FOR A DISTANCE OF 666.93 FEET TO A POINT AND CORNER;

THENCE SOUTH 00°48'13" EAST FOR A DISTANCE OF 85.35 FEET TO A POINT AND CORNER;

THENCE SOUTH 82°05'46" WEST FOR A DISTANCE OF 671.98 FEET TO A POINT AND CORNER;

THENCE NORTH 00°49'57" WEST FOR A DISTANCE OF 172.34 FEET TO THE POINT OF BEGINNING.

CONTAINING: 85,926 SQUARE FEET OR 1.973 ACRES OF LAND, MORE OR LESS.

**DESCRIPTION OF PARCEL 8-5
A PORTION OF GROUND LOCATED IN SECTION 14, T 8 S - R 14 E,
GREENSBURG LAND DISTRICT, ST. TAMMANY PARISH, LOUISIANA**

DESCRIPTION OF A 0.411 ACRE PARCEL OF LAND LOCATED IN SECTION 14, T 8 S - R 14 E, GREENSBURG LAND DISTRICT, PARISH OF ST. TAMMANY, STATE OF LOUISIANA. SAID 0.411 ACRE PARCEL BEING MORE FULLY DESCRIBED AS FOLLOWS:

BEGINNING AT A POINT, NORTH 89°32'03" EAST FOR A DISTANCE OF 2152.35 FEET TO A POINT; THENCE NORTH 00°14'43" WEST FOR A DISTANCE OF 100.00 FEET TO A POINT; THENCE NORTH 89°31'57" EAST FOR A DISTANCE OF 61.51 FEET FROM THE CORNER COMMON TO SECTIONS 14, 15, 22 & 23, T 8 S - R 14 E, GREENSBURG LAND DISTRICT, ST. TAMMANY PARISH, LOUISIANA;

THENCE NORTH 89°31'57" EAST FOR A DISTANCE OF 447.21 FEET TO A POINT AND CORNER;

THENCE SOUTH 01°33'27" EAST FOR A DISTANCE OF 40.01 FEET TO A POINT AND CORNER;

THENCE SOUTH 89°31'57" WEST FOR A DISTANCE OF 448.00 FEET TO A POINT AND CORNER;

THENCE NORTH 00°25'26" WEST FOR A DISTANCE OF 40.00 FEET TO THE POINT OF BEGINNING.

CONTAINING: 17,919 SQUARE FEET OR 0.411 ACRES OF LAND, MORE OR LESS.

**DESCRIPTION OF PARCEL 9-1
A PORTION OF GROUND LOCATED IN SECTION 14, T 8 S - R 14 E,
GREENSBURG LAND DISTRICT, ST. TAMMANY PARISH, LOUISIANA**

DESCRIPTION OF A 0.828 ACRE PARCEL OF LAND LOCATED IN SECTION 14, T 8 S - R 14 E, GREENSBURG LAND DISTRICT, PARISH OF ST. TAMMANY, STATE OF LOUISIANA. SAID 0.828 ACRE PARCEL BEING MORE FULLY DESCRIBED AS FOLLOWS:

BEGINNING AT A POINT, SAID POINT BEING NORTH 01°25'50" WEST FOR A DISTANCE OF 60.02 FEET FROM THE NORTHEAST CORNER OF THE NORTHWEST QUARTER OF SECTION 23, T 8 S - R 14 E, GREENSBURG LAND DISTRICT, ST. TAMMANY PARISH, LOUISIANA;

THENCE NORTH 01°33'27" WEST FOR A DISTANCE OF 40.01 FEET TO A POINT AND CORNER;

THENCE NORTH 89°32'04" EAST FOR A DISTANCE OF 901.90 FEET TO A POINT AND CORNER;

THENCE SOUTH 01°16'01" EAST FOR A DISTANCE OF 40.00 FEET TO A POINT AND CORNER;

THENCE SOUTH 89°32'04" WEST FOR A DISTANCE OF 901.70 FEET TO THE POINT OF BEGINNING.

CONTAINING: 36,072 SQUARE FEET OR 0.828 ACRES OF LAND, MORE OR LESS.

**DESCRIPTION OF PARCEL 9-2
A PORTION OF GROUND LOCATED IN SECTION 23, T 8 S - R 14 E,
GREENSBURG LAND DISTRICT, ST. TAMMANY PARISH, LOUISIANA**

DESCRIPTION OF A 0.684 ACRE PARCEL OF LAND LOCATED IN SECTION 23, T 8 S - R 14 E, GREENSBURG LAND DISTRICT, PARISH OF ST. TAMMANY, STATE OF LOUISIANA. SAID 0.684 ACRE PARCEL BEING MORE FULLY DESCRIBED AS FOLLOWS:

BEGINNING AT A POINT, SAID POINT BEING NORTH 89°32'03" EAST AND 330.00 FEET FROM THE NORTHEAST CORNER OF THE NORTHWEST QUARTER OF SECTION 23, T 8 S - R 14 E, GREENSBURG LAND DISTRICT, ST. TAMMANY PARISH, LOUISIANA;

THENCE NORTH 89°32'03" EAST FOR A DISTANCE OF 744.37 FEET TO A POINT AND CORNER;

THENCE SOUTH 01°24'19" EAST FOR A DISTANCE OF 40.01 FEET TO A POINT AND CORNER;

THENCE SOUTH 89°32'03" WEST FOR A DISTANCE OF 744.99 FEET TO A POINT AND CORNER;

THENCE NORTH 00°30'53" WEST FOR A DISTANCE OF 40.00 FEET TO THE POINT OF BEGINNING.

CONTAINING: 29,787 SQUARE FEET OR 0.684 ACRES OF LAND, MORE OR LESS.

**DESCRIPTION OF PARCEL 9-4
A PORTION OF GROUND LOCATED IN SECTION 23, T 8 S - R 14 E,
GREENSBURG LAND DISTRICT, ST. TAMMANY PARISH, LOUISIANA**

DESCRIPTION OF A 0.160 ACRE PARCEL OF LAND LOCATED IN SECTION 23, T 8 S - R 14 E, GREENSBURG LAND DISTRICT, PARISH OF ST. TAMMANY, STATE OF LOUISIANA. SAID 0.160 ACRE PARCEL BEING MORE FULLY DESCRIBED AS FOLLOWS:

BEGINNING AT A POINT, SAID POINT BEING NORTH 89°32'03" EAST AND 1324.36 FEET FROM THE NORTHEAST CORNER OF THE NORTHWEST QUARTER OF SECTION 23, T 8 S - R 14 E, GREENSBURG LAND DISTRICT, ST. TAMMANY PARISH, LOUISIANA;

THENCE NORTH 89°32'03" EAST FOR A DISTANCE OF 51.50 FEET TO A POINT AND CORNER;

THENCE SOUTH 13°58'01" EAST FOR A DISTANCE OF 13.60 FEET TO A POINT AND CORNER;

THENCE SOUTH 82°01'33" EAST FOR A DISTANCE OF 37.99 FEET TO A POINT AND CORNER;

THENCE SOUTH 17°47'38" WEST FOR A DISTANCE OF 91.42 FEET TO A POINT AND CORNER;

THENCE NORTH 68°02'04" WEST FOR A DISTANCE OF 67.40 FEET TO A POINT AND CORNER;

THENCE NORTH 01°24'19" WEST FOR A DISTANCE OF 79.90 FEET TO THE POINT OF BEGINNING.

CONTAINING: 6,990 SQUARE FEET OR 0.160 ACRES OF LAND, MORE OR LESS.

DESCRIPTION OF PARCEL 9-5
A PORTION OF GROUND LOCATED IN SECTION 23, T 8 S - R 14 E,
GREENSBURG LAND DISTRICT, ST. TAMMANY PARISH, LOUISIANA

DESCRIPTION OF A 0.223 ACRE PARCEL OF LAND LOCATED IN SECTION 23, T 8 S - R 14 E, GREENSBURG LAND DISTRICT, PARISH OF ST. TAMMANY, STATE OF LOUISIANA. SAID 0.223 ACRE PARCEL BEING MORE FULLY DESCRIBED AS FOLLOWS:

BEGINNING AT A POINT, SAID POINT BEING NORTH 89°32'03" EAST AND 1375.86 FEET FROM THE NORTHEAST CORNER OF THE NORTHWEST QUARTER OF SECTION 23, T 8 S - R 14 E, GREENSBURG LAND DISTRICT, ST. TAMMANY PARISH, LOUISIANA;

THENCE NORTH 89°32'03" EAST FOR A DISTANCE OF 230.02 FEET TO A POINT AND CORNER;

THENCE SOUTH 18°58'05" WEST FOR A DISTANCE OF 84.98 FEET TO A POINT AND CORNER;

THENCE NORTH 69°36'28" WEST FOR A DISTANCE OF 172.28 FEET TO A POINT AND CORNER;

THENCE NORTH 82°01'33" WEST FOR A DISTANCE OF 37.99 FEET TO A POINT AND CORNER;

THENCE NORTH 13°58'01" WEST FOR A DISTANCE OF 13.60 FEET TO THE POINT OF BEGINNING.

CONTAINING: 9,719 SQUARE FEET OR 0.223 ACRES OF LAND, MORE OR LESS.

**DESCRIPTION OF PARCEL 9-6
A PORTION OF GROUND LOCATED IN SECTION 23, T 8 S - R 14 E,
GREENSBURG LAND DISTRICT, ST. TAMMANY PARISH, LOUISIANA**

DESCRIPTION OF A 0.015 ACRE PARCEL OF LAND LOCATED IN SECTION 23, T 8 S - R 14 E, GREENSBURG LAND DISTRICT, PARISH OF ST. TAMMANY, STATE OF LOUISIANA. SAID 0.015 ACRE PARCEL BEING MORE FULLY DESCRIBED AS FOLLOWS:

BEGINNING AT A POINT, SAID POINT BEING NORTH 89°32'03" EAST AND 1375.86 FEET; SOUTH 13°58'01" EAST FOR A DISTANCE OF 13.60 FEET; THENCE SOUTH 82°01'33" EAST FOR A DISTANCE OF 37.99 FEET FROM THE NORTHEAST CORNER OF THE NORTHWEST QUARTER OF SECTION 23, T 8 S - R 14 E, GREENSBURG LAND DISTRICT, ST. TAMMANY PARISH, LOUISIANA;

THENCE SOUTH 69°36'28" EAST FOR A DISTANCE OF 59.54 FEET TO A POINT AND CORNER;

THENCE SOUTH 89°32'03" WEST FOR A DISTANCE OF 62.63 FEET TO A POINT AND CORNER;

THENCE NORTH 17°47'38" EAST FOR A DISTANCE OF 22.32 FEET TO THE POINT OF BEGINNING.

CONTAINING: 664 SQUARE FEET OR 0.015 ACRES OF LAND, MORE OR LESS.

**DESCRIPTION OF PARCEL 6-2
A PORTION OF GROUND LOCATED IN SECTION 22, T 8 S - R 14 E,
GREENSBURG LAND DISTRICT, ST. TAMMANY PARISH, LOUISIANA**

DESCRIPTION OF A 5.073 ACRE PARCEL OF LAND LOCATED IN SECTION 22, T 8 S - R 14 E, GREENSBURG LAND DISTRICT, PARISH OF ST. TAMMANY, STATE OF LOUISIANA. SAID 5.073 ACRE PARCEL BEING MORE FULLY DESCRIBED AS FOLLOWS:

BEGINNING AT A POINT, SAID POINT BEING SOUTH 00°33'47" EAST AND 575.20 FEET FROM THE NORTHWEST CORNER OF THE NORTHEAST QUARTER OF THE NORTHWEST QUARTER OF SECTION 22, T 8 S - R 14 E, GREENSBURG LAND DISTRICT, ST. TAMMANY PARISH, LOUISIANA;

THENCE NORTH 66°25'46" EAST FOR A DISTANCE OF 376.28 FEET TO A POINT AND CORNER;

THENCE, ALONG A TANGENT CURVE TO THE RIGHT WITH A RADIUS OF 4150.00 FEET, THE CHORD OF WHICH BEARS NORTH 73°59'31" EAST FOR A DISTANCE OF 1092.36 FEET; THENCE ALONG THE ARC OF SAID CURVE FOR A DISTANCE OF 1095.54 FEET TO A POINT AND CORNER;

THENCE SOUTH 00°20'35" EAST FOR A DISTANCE OF 151.57 FEET TO A POINT AND CORNER;

THENCE, ALONG A NON-TANGENT CURVE TO THE LEFT HAVING A RADIUS OF 4000.00 FEET, THE LONG CHORD OF WHICH BEARS SOUTH 73°50'21" WEST FOR A DISTANCE OF 1031.69 FEET FOR AN ARC LENGTH OF 1034.57 FEET TO A POINT;

THENCE SOUTH 66°25'46" WEST FOR A DISTANCE OF 439.98 FEET TO A POINT AND CORNER;

THENCE NORTH 00°33'47" WEST FOR A DISTANCE OF 162.96 FEET THE POINT OF BEGINNING.

CONTAINING: 220,978 SQUARE FEET OR 5.073 ACRES OF LAND, MORE OR LESS.

**DESCRIPTION OF PARCEL 7-1
A PORTION OF GROUND LOCATED IN SECTION 22, T 8 S - R 14 E,
GREENSBURG LAND DISTRICT, ST. TAMMANY PARISH, LOUISIANA**

DESCRIPTION OF A 10.201 ACRE PARCEL OF LAND LOCATED IN SECTION 22, T 8 S - R 14 E, GREENSBURG LAND DISTRICT, PARISH OF ST. TAMMANY, STATE OF LOUISIANA. SAID 10.201 ACRE PARCEL BEING MORE FULLY DESCRIBED AS FOLLOWS:

BEGINNING AT A POINT, SAID POINT BEING SOUTH 00°20'35" EAST AND 85.00 FEET FROM THE NORTHWEST CORNER OF THE NORTHEAST QUARTER OF SECTION 22, T 8 S - R 14 E, GREENSBURG LAND DISTRICT, ST. TAMMANY PARISH, LOUISIANA;

THENCE NORTH 89°32'02" EAST FOR A DISTANCE OF 2563.67 FEET TO A POINT AND CORNER;

THENCE SOUTH 00°06'05" WEST FOR A DISTANCE OF 174.16 FEET TO A POINT AND CORNER;

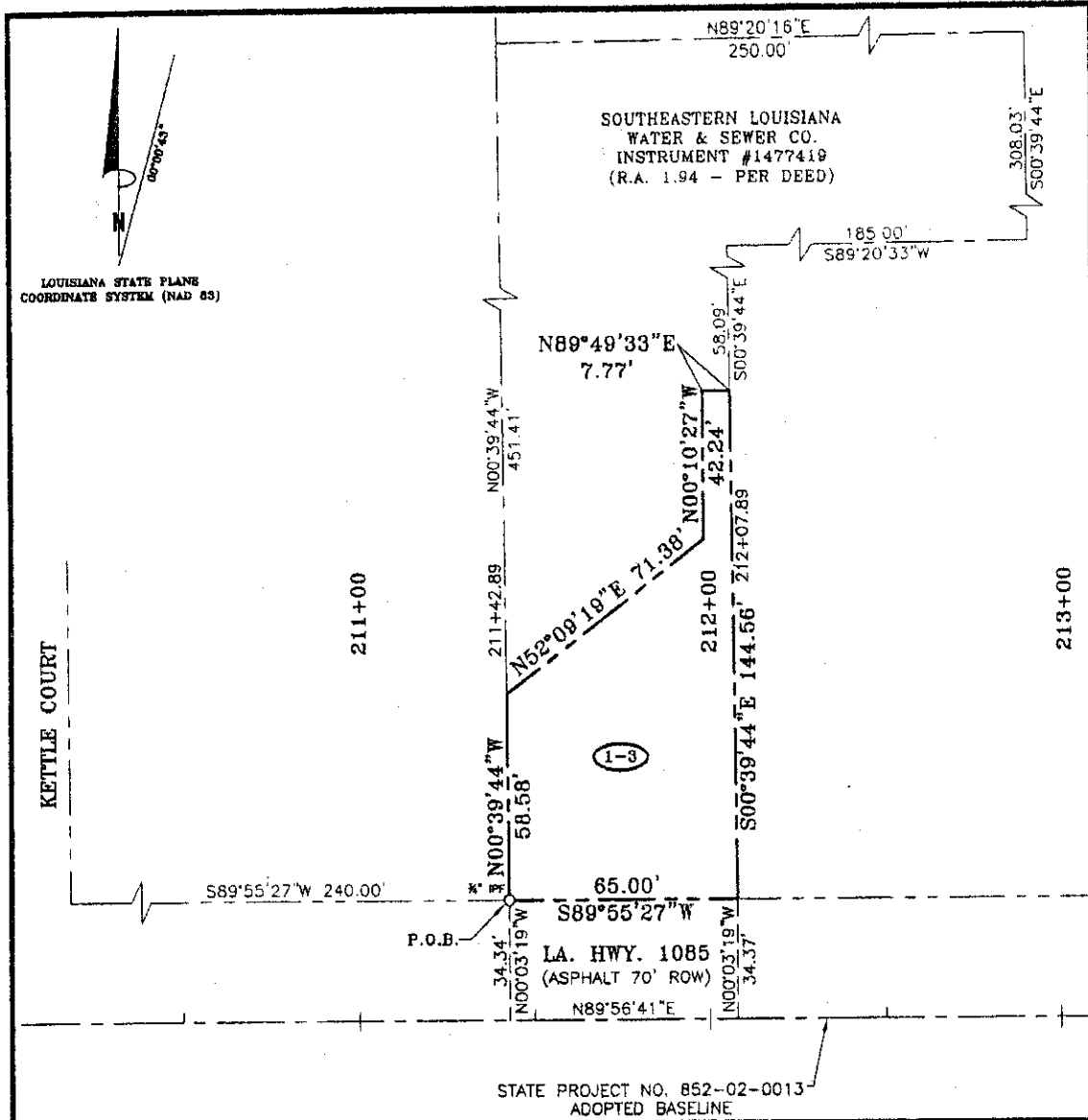
THENCE SOUTH 89°43'05" WEST FOR A DISTANCE OF 1973.14 FEET TO A POINT AND CORNER;

THENCE, ALONG A TANGENT CURVE TO THE LEFT WITH A RADIUS OF 4000.00 FEET, THE CHORD OF WHICH BEARS SOUTH 85°29'00" WEST FOR A DISTANCE OF 590.74 FEET; THENCE ALONG THE ARC OF SAID CURVE FOR A DISTANCE OF 591.28 FEET TO A POINT AND CORNER;

THENCE NORTH 00°20'35" WEST FOR A DISTANCE OF 209.54 FEET TO THE POINT OF BEGINNING.

CONTAINING: 444,359 SQUARE FEET OR 10.201 ACRES OF LAND, MORE OR LESS.

HIGHWAY 1077 AND
1085 INTERSECTION PROJECT



LEGAL DESCRIPTION

A CERTAIN PIECE OR PORTION OF GROUND SITUATED IN SECTION 3, TOWNSHIP 7 SOUTH, RANGE 10 EAST, ST. TAMMANY PARISH, LOUISIANA, COMMENCING AT THE STATION 211+42.89 FROM STATE PROJECT NO. 852-02-0013 ADOPTED BASELINE RUN NORTH 00 DEGREES 03 MINUTES 19 SECONDS WEST A DISTANCE OF 34.34 FEET TO A POINT ON THE NORTHERLY RIGHT-OF-WAY LINE OF LA. HWY. 1085 AND THE POINT OF BEGINNING.

FROM THE POINT OF BEGINNING AND LEAVING SAID RIGHT-OF-WAY, RUN NORTH 00 DEGREES 39 MINUTES 44 SECONDS WEST A DISTANCE OF 58.58 FEET TO A POINT; THENCE RUN NORTH 52 DEGREES 09 MINUTES 19 SECONDS EAST A DISTANCE OF 71.38 FEET TO A POINT; THENCE RUN NORTH 00 DEGREES 10 MINUTES 27 SECONDS WEST A DISTANCE OF 42.24 FEET TO A POINT; THENCE RUN NORTH 89 DEGREES 49 MINUTES 33 SECONDS EAST A DISTANCE OF 7.77 FEET TO A POINT; THENCE RUN SOUTH 00 DEGREES 39 MINUTES 44 SECONDS EAST A DISTANCE OF 144.56 FEET BACK TO THE POINT OF BEGINNING.

SAID PIECE OR PORTION OF GROUND CONTAINS 0.13 ACRES (5,741.96 SQ. FT.) MORE OR LESS.

DETAIL MAP OF STATE PROJECT NO. 852-02-0013
0.13 ACRES (5,741.96 SQ. FT.)
STATION 211+42.89 TO 212+07.89
ALONG LA. HWY. 1085 NORTH RIGHT-OF-WAY LINE
 in
 St. Tammany Parish, Louisiana
 for
ST. TAMMANY PARISH ROADWAY IMPROVEMENTS

Survey No. 2005392 NORTH_003 Drawn by: SPH
 Date: DECEMBER, 2007 Revised:

Scale: 1" = 40'

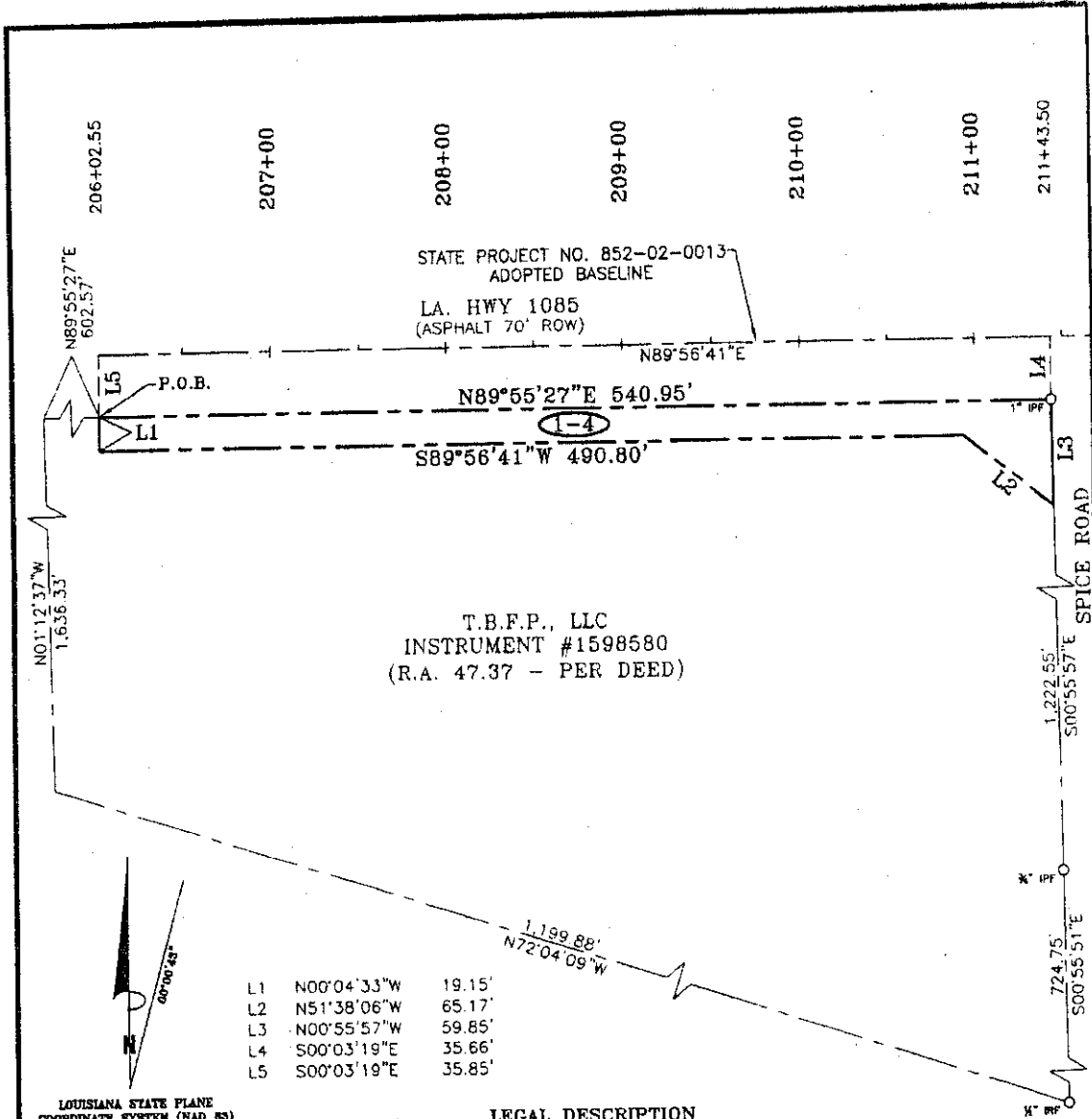
This Survey is Certified True and Correct By

JOHN E. BONNEAU & ASSOCIATES, INC.

Professional Land Surveyors • Planners and Consultants

420 HWY. 1085, EXIT #57 • MADISONVILLE, LA. 70447
 (985)845-1012 • (985)845-1013 • (985)845-1351 • FAX NO. (985)845-1778
 www.JEBCOLandSurveying.com • e-mail: jebco1@bellsouth.net

John E. Bonneau
 Professional Land Surveyor
 Registration No. 4423



T.B.F.P., LLC
 INSTRUMENT #1598580
 (R.A. 47.37 - PER DEED)

L1	N00°04'33\"W	19.15'
L2	N51°38'06\"W	65.17'
L3	N00°55'57\"W	59.85'
L4	S00°03'19\"E	35.66'
L5	S00°03'19\"E	35.85'

LOUISIANA STATE PLANE
 COORDINATE SYSTEM (NAD 83)

LEGAL DESCRIPTION

A CERTAIN PIECE OR PORTION OF GROUND SITUATED IN SECTION 3, TOWNSHIP 7 SOUTH, RANGE 10 EAST, ST. TAMMANY PARISH, LOUISIANA COMMENCING AT THE STATION 206+02.55 FROM STATE PROJECT NO. 852-02-0013 ADOPTED BASELINE RUN SOUTH 00 DEGREES 03 MINUTES 19 SECONDS EAST A DISTANCE OF 35.85 FEET TO A POINT ON THE SOUTHERLY RIGHT-OF-WAY LINE OF LA. HWY. 1085 AND THE POINT OF BEGINNING.

FROM THE POINT OF BEGINNING, RUN NORTH 88 DEGREES 55 MINUTES 27 SECONDS EAST A DISTANCE OF 540.95 FEET TO A POINT ON THE WESTERLY RIGHT-OF-WAY OF SPICE ROAD; THENCE RUN ALONG SAID RIGHT-OF-WAY SOUTH 00 DEGREES 55 MINUTES 57 SECONDS EAST A DISTANCE OF 59.85 FEET TO A POINT; THENCE LEAVING SAID RIGHT-OF-WAY, RUN NORTH 51 DEGREES 38 MINUTES 06 SECONDS WEST A DISTANCE OF 65.17 FEET TO A POINT; THENCE RUN SOUTH 89 DEGREES 56 MINUTES 41 SECONDS WEST A DISTANCE OF 490.80 FEET TO A POINT; THENCE RUN NORTH 00 DEGREES 04 MINUTES 33 SECONDS WEST A DISTANCE OF 19.15 FEET BACK TO THE POINT OF BEGINNING.

SAID PIECE OR PORTION OF GROUND CONTAINS 0.26 ACRES (11,435.99 SQ. FT.) MORE OR LESS.

DETAIL MAP OF STATE PROJECT NO. 852-02-0013
 0.26 ACRES (11,435.99 SQ. FT.)
 STATION 206+02.55 TO 211+43.50
 ALONG LA. HWY. 1085 SOUTH RIGHT-OF-WAY LINE
 St. Tammany Parish, Louisiana
 for
ST. TAMMANY PARISH ROADWAY IMPROVEMENTS

Survey No. 2005392 SOUTH_001 Drawn by: SPH Scale: 1" = 80'
 Date: DECEMBER, 2007 Revised:

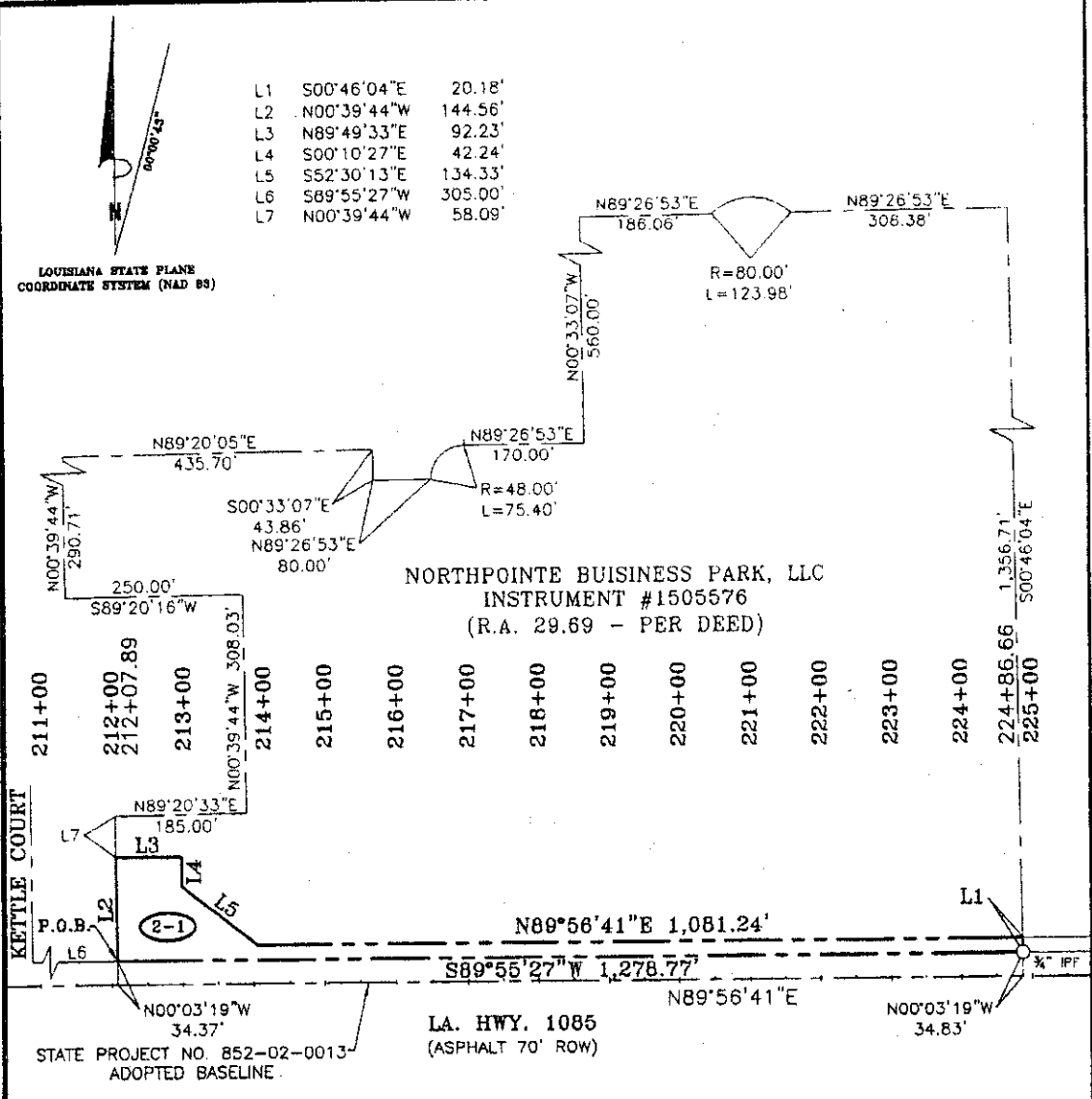
This Survey is Certified
 True and Correct By

 John E. Bonneau
 Professional Land Surveyor
 Registration No. 4423

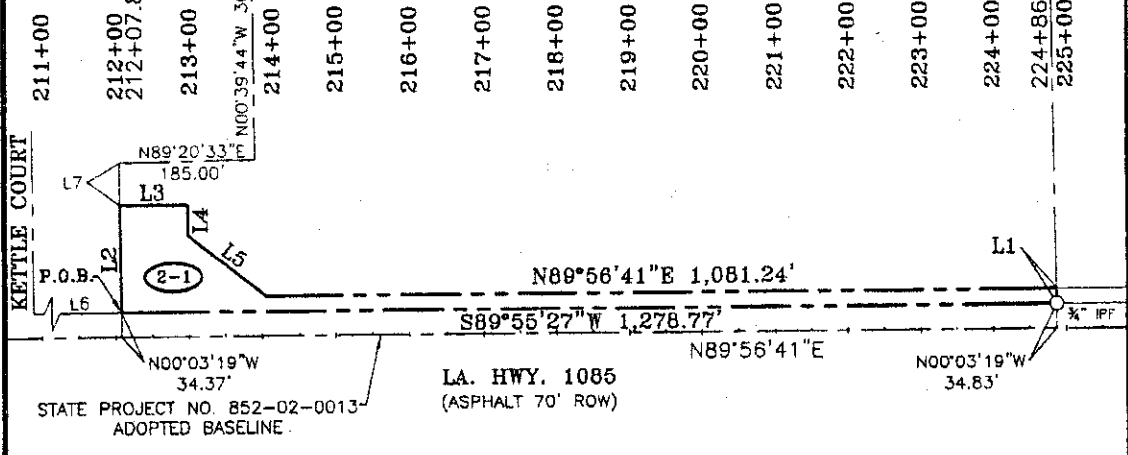
JOHN E. BONNEAU & ASSOCIATES, INC.
 Professional Land Surveyors • Planners and Consultants
 420 HWY. 1085, EXIT #57 • MADISONVILLE, LA. 70447
 (985)845-1012 • (985)845-1013 • (985)845-1351 • FAX NO. (985)845-1778
 www.JEBCOLandSurveying.com • e-mail: jebco1@bellsouth.net

LOUISIANA STATE PLANE
COORDINATE SYSTEM (NAD 83)

L1	S00°46'04"E	20.18'
L2	N00°39'44"W	144.56'
L3	N89°49'33"E	92.23'
L4	S00°10'27"E	42.24'
L5	S52°30'13"E	134.33'
L6	S89°55'27"W	305.00'
L7	N00°39'44"W	58.09'



NORTHPOINTE BUSINESS PARK, LLC
INSTRUMENT #1505576
(R.A. 29.69 - PER DEED)



LEGAL DESCRIPTION

A CERTAIN PIECE OR PORTION OF GROUND SITUATED IN SECTION 3, TOWNSHIP 7 SOUTH, RANGE 10 EAST, ST. TAMMANY PARISH, LOUISIANA, COMMENCING AT THE STATION 212+07.89 FROM STATE PROJECT NO. 852-02-0013 ADOPTED BASELINE RUN NORTH 00 DEGREES 03 MINUTES 19 SECONDS WEST A DISTANCE OF 34.37 FEET TO A POINT ON THE NORTHERLY RIGHT-OF-WAY LINE OF LA. HWY. 1085 AND THE POINT OF BEGINNING.

FROM THE POINT OF BEGINNING AND LEAVING SAID RIGHT-OF-WAY, RUN NORTH 00 DEGREES 39 MINUTES 44 SECONDS WEST A DISTANCE OF 144.56 FEET TO A POINT; THENCE RUN NORTH 89 DEGREES 49 MINUTES 33 SECONDS EAST A DISTANCE OF 92.23 FEET TO A POINT; THENCE RUN SOUTH 00 DEGREES 10 MINUTES 27 SECONDS EAST A DISTANCE OF 42.24 FEET TO A POINT; THENCE RUN SOUTH 52 DEGREES 30 MINUTES 13 SECONDS EAST A DISTANCE OF 134.33 FEET TO A POINT; THENCE RUN NORTH 89 DEGREES 56 MINUTES 41 SECONDS EAST A DISTANCE OF 1,081.24 FEET TO A POINT; THENCE RUN SOUTH 00 DEGREES 46 MINUTES 04 SECONDS EAST A DISTANCE OF 20.18 FEET TO A POINT ON THE NORTHERLY RIGHT-OF-WAY OF LA. HWY. 1085; THENCE RUN ALONG SAID RIGHT-OF-WAY SOUTH 89 DEGREES 55 MINUTES 27 SECONDS WEST A DISTANCE OF 1,278.77 FEET BACK TO THE POINT OF BEGINNING.

SAID PIECE OR PORTION OF GROUND CONTAINS 0.96 ACRES (41,816.21 SQ. FT.) MORE OR LESS.

DETAIL MAP OF STATE PROJECT NO. 852-02-0013
0.96 ACRES (41,816.21 SQ. FT.)
STATION 212+07.89 TO 224+86.66
ALONG LA. HWY. 1085 NORTH RIGHT-OF-WAY LINE
in
St. Tammany Parish, Louisiana
for
ST. TAMMANY PARISH ROADWAY IMPROVEMENTS

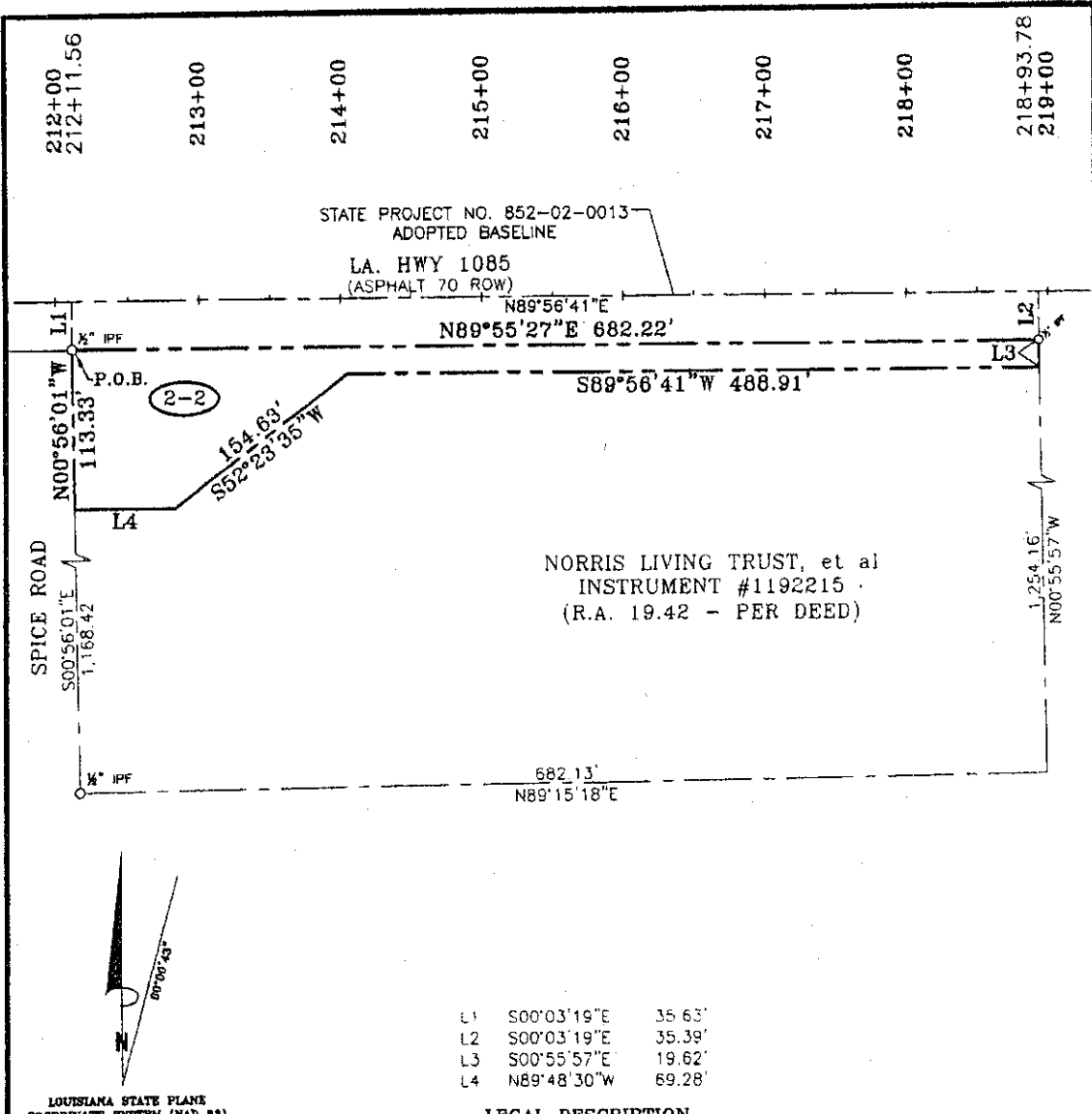
Survey No. 2005392 NORTH_004 Drawn by: SPH Scale: 1" = 200'
Date: DECEMBER, 2007 Revised:

This Survey is Certified True and Correct By

JOHN E. BONNEAU & ASSOCIATES, INC.
Professional Land Surveyors • Planners and Consultants

420 HWY. 1085, EXIT #57 • MADISONVILLE, LA. 70447
(985)845-1012 • (985)845-1013 • (985)845-1351 • FAX NO. (985)845-1778
www.JEBCOLandSurveying.com • e-mail: jebco1@bellsouth.net

John E. Bonneau
Professional Land Surveyor
Registration No. 4423



LOUISIANA STATE PLANE
COORDINATE SYSTEM (NAD 83)

L1	S00°03'19"E	35.63'
L2	S00°03'19"E	35.39'
L3	S00°55'57"E	19.62'
L4	N89°48'30"W	69.28'

LEGAL DESCRIPTION

A CERTAIN PIECE OR PORTION OF GROUND SITUATED IN SECTION 3, TOWNSHIP 7 SOUTH, RANGE 10 EAST, ST. TAMMANY PARISH, LOUISIANA. COMMENCING AT THE STATION 212+11.56 FROM STATE PROJECT NO. 852-02-0013 ADOPTED BASELINE RUN SOUTH 00 DEGREES 03 MINUTES 19 SECONDS EAST A DISTANCE OF 35.63 FEET TO A POINT ON THE SOUTHERLY RIGHT-OF-WAY LINE OF LA. HWY. 1085 AND THE POINT OF BEGINNING.

FROM THE POINT OF BEGINNING, RUN NORTH 89 DEGREES 55 MINUTES 27 SECONDS EAST A DISTANCE OF 682.22 FEET TO A POINT; THENCE LEAVING SAID RIGHT-OF-WAY, RUN SOUTH 00 DEGREES 57 SECONDS EAST A DISTANCE OF 19.62 FEET TO A POINT; THENCE RUN SOUTH 89 DEGREES 56 MINUTES 41 SECONDS WEST A DISTANCE 488.91 FEET TO A POINT; THENCE RUN SOUTH 52 DEGREES 23 MINUTES 35 SECONDS WEST A DISTANCE OF 154.63 FEET TO A POINT; THENCE RUN NORTH 89 DEGREES 48 MINUTES 30 SECONDS WEST A DISTANCE OF 69.28 FEET TO A POINT; THENCE RUN NORTH 00 DEGREES 56 MINUTES 01 SECONDS WEST A DISTANCE OF 113.33 FEET BACK TO THE POINT OF BEGINNING.

SAID PIECE OR PORTION OF GROUND CONTAINS 0.59 ACRES (25,661.04 SQ. FT.) MORE OR LESS.

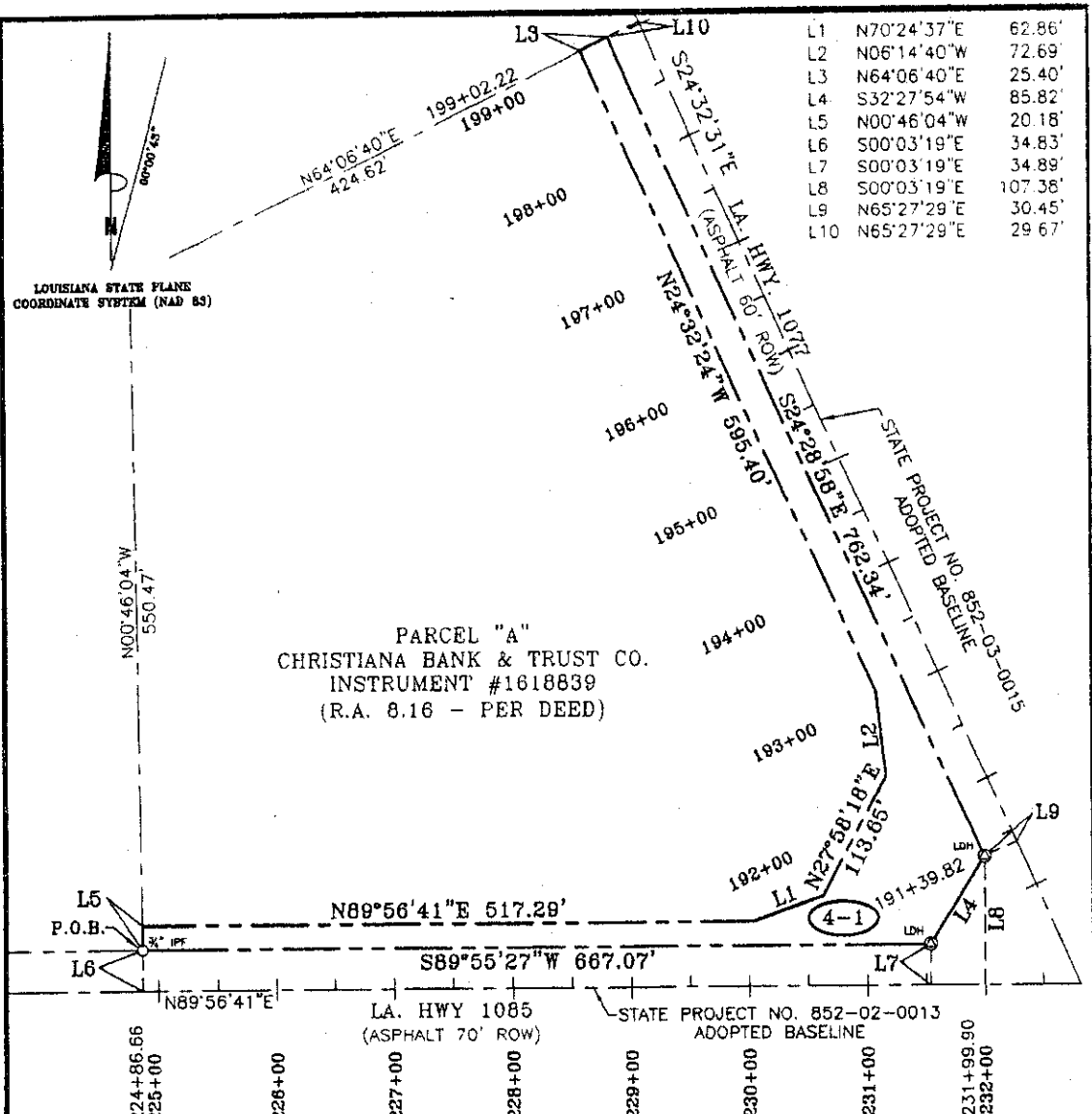
DETAIL MAP OF STATE PROJECT NO. 852-02-0013
0.59 ACRES (25,661.04 SQ. FT.)
STATION 212+11.56 TO 218+93.78
ALONG LA. HWY. 1085 SOUTH RIGHT-OF-WAY LINE
 St. Tammany Parish, Louisiana
 for
ST. TAMMANY PARISH ROADWAY IMPROVEMENTS

Survey No. 2005392 SOUTH_003 Drawn by: SPH Scale: 1" = 100'
 Date: DECEMBER, 2007 Revised:

This Survey is Certified True and Correct By

JOHN E. BONNEAU & ASSOCIATES, INC.
 Professional Land Surveyors • Planners and Consultants
 420 HWY. 1085, EXIT #57 • MADISONVILLE, LA. 70447
 (985)845-1012 • (985)845-1013 • (985)845-1351 • FAX NO. (985)845-1778
 www.JEBCOLandSurveying.com • e-mail: jebco1@bellsouth.net

John E. Bonneau
 Professional Land Surveyor
 Registration No. 4423



LOUISIANA STATE PLANE
COORDINATE SYSTEM (NAD 83)

PARCEL "A"
CHRISTIANA BANK & TRUST CO.
INSTRUMENT #1618839
(R.A. 8.16 - PER DEED)

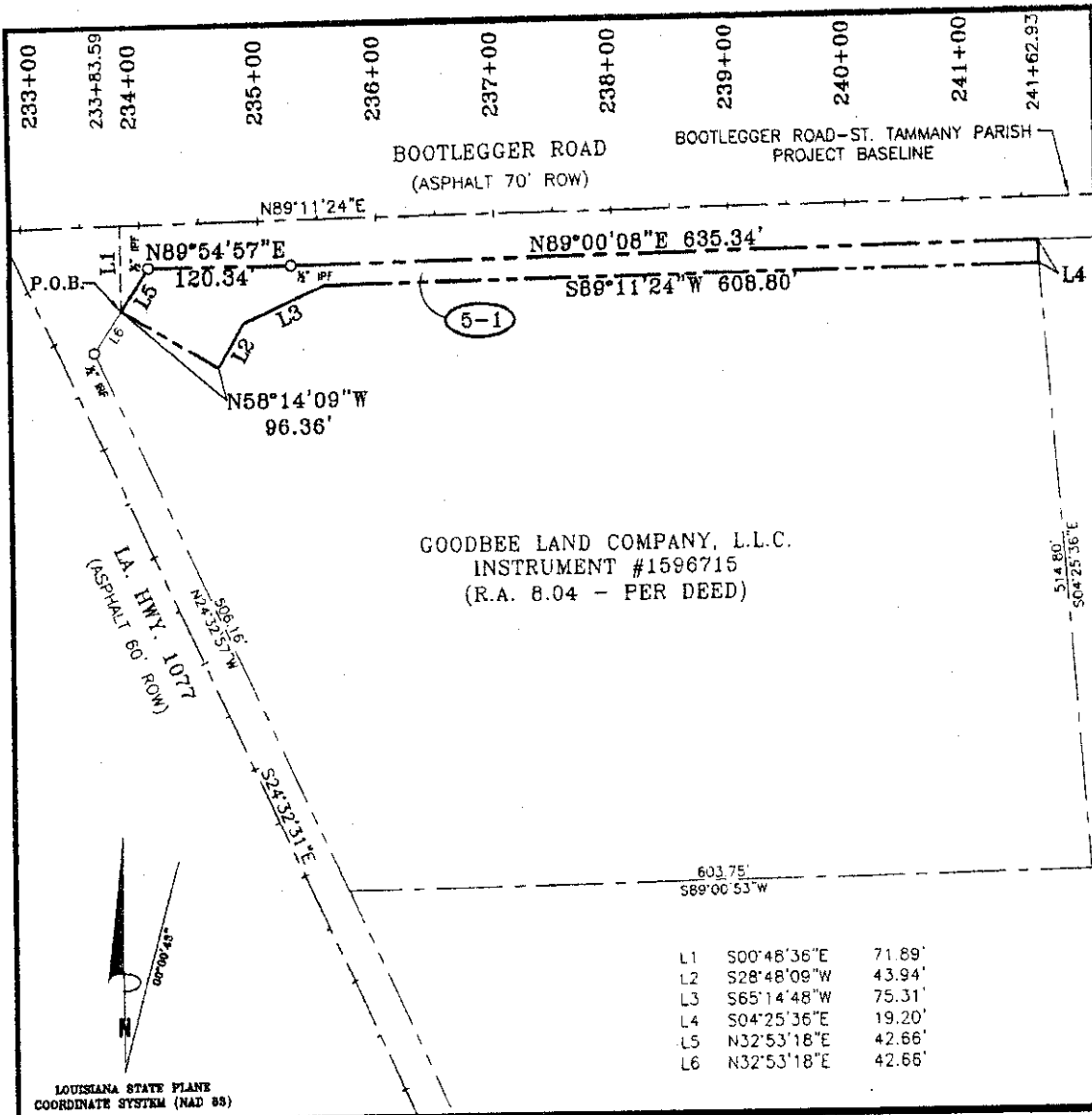
A CERTAIN PIECE OR PORTION OF GROUND SITUATED IN SECTION 3, TOWNSHIP 7 SOUTH, RANGE 10 EAST, ST. TAMMANY PARISH, LOUISIANA, COMMENCING AT THE STATION 224+86.66 FROM STATE PROJECT NO. 852-02-0013 ADOPTED BASELINE RUN NORTH 00 DEGREES 03 MINUTES 19 SECONDS WEST A DISTANCE OF 34.83 FEET TO A POINT ON THE NORTHERLY RIGHT-OF-WAY LINE OF LA. HWY. 1085 AND THE POINT OF BEGINNING.

FROM THE POINT OF BEGINNING AND LEAVING SAID RIGHT-OF-WAY, RUN NORTH 00 DEGREES 46 MINUTES 04 SECONDS WEST A DISTANCE OF 20.18 FEET TO A POINT; THENCE RUN NORTH 89 DEGREES 56 MINUTES 41 SECONDS EAST A DISTANCE OF 517.29 FEET TO A POINT; THENCE RUN NORTH 70 DEGREES 24 MINUTES 37 SECONDS EAST A DISTANCE OF 62.86 FEET TO A POINT; THENCE RUN NORTH 27 DEGREES 58 MINUTES 18 SECONDS EAST A DISTANCE OF 113.65 FEET TO A POINT; THENCE RUN NORTH 24 DEGREES 32 MINUTES 24 SECONDS WEST A DISTANCE OF 595.40 FEET TO A POINT; THENCE RUN NORTH 64 DEGREES 06 MINUTES 40 SECONDS EAST A DISTANCE OF 25.40 FEET TO A POINT ON THE WESTERLY RIGHT-OF-WAY OF LA. HWY. 1077; THENCE RUN ALONG SAID RIGHT-OF-WAY SOUTH 24 DEGREES 28 MINUTES 58 SECONDS EAST A DISTANCE OF 762.34 FEET TO A POINT; THENCE RUN SOUTH 32 DEGREES 27 MINUTES 54 SECONDS WEST A DISTANCE OF 62.18 FEET TO A POINT ON THE NORTHERLY RIGHT-OF-WAY OF LA. HWY. 1085; THENCE RUN ALONG SAID RIGHT-OF-WAY SOUTH 89 DEGREES 55 MINUTES 27 SECONDS WEST A DISTANCE OF 667.07 FEET BACK TO THE POINT OF BEGINNING.

SAID PIECE OR PORTION OF GROUND CONTAINS 1.01 ACRES (44,069.57 SQ. FT.) MORE OR LESS.

DETAIL MAP OF STATE PROJECT NO. 852-02-0013 & 852-03-0015
1.01 ACRES (44,069.57 SQ. FT.)
STATION 224+86.66 TO 231+99.90 ALONG LA. HWY. 1085
NORTH RIGHT-OF-WAY LINE STATION 199+02.22 TO 191+39.82
ALONG LA. HWY. 1077
St. Tammany Parish, Louisiana
for
ST. TAMMANY PARISH ROADWAY IMPROVEMENTS

Survey No. 2005392 NORTH_005	Drawn by: SPH	Scale: 1" = 120'	This Survey is Certified True and Correct By
Date: DECEMBER, 2007	Revised:		
JOHN E. BONNEAU & ASSOCIATES, INC.			John E. Bonneau Professional Land Surveyor Registration No. 4423
Professional Land Surveyors • Planners and Consultants			
420 HWY. 1085, EXIT #57 • MADISONVILLE, LA. 70447 (985)845-1012 • (985)845-1013 • (985)845-1351 • FAX NO. (985)845-1778 www.JEBCOLandSurveying.com • e-mail: jebco1@bellsouth.net			



LEGAL DESCRIPTION

A CERTAIN PIECE OR PORTION OF GROUND SITUATED IN SECTION 3, TOWNSHIP 7 SOUTH, RANGE 10 EAST, ST. TAMMANY PARISH, LOUISIANA, COMMENCING AT THE STATION 233+83.59 FROM BOOTLEGGER ROAD-ST. TAMMANY PARISH ADOPTED BASELINE RUN SOUTH 00 DEGREES 48 MINUTES 36 SECONDS EAST A DISTANCE OF 71.89 FEET TO A POINT ON THE SOUTHERLY RIGHT-OF-WAY LINE OF BOOTLEGGER ROAD AND THE POINT OF BEGINNING.

FROM THE POINT OF BEGINNING, CONTINUE ALONG SAID RIGHT-OF-WAY NORTH 32 DEGREES 53 MINUTES 18 SECONDS EAST A DISTANCE OF 42.66 FEET TO A POINT; THENCE RUN NORTH 89 DEGREES 54 MINUTES 57 SECONDS EAST A DISTANCE OF 120.34 FEET TO A POINT; THENCE CONTINUE ALONG SAID RIGHT-OF-WAY NORTH 89 DEGREES 00 MINUTES 08 SECONDS EAST A DISTANCE OF 635.34 FEET TO A POINT; THENCE LEAVING SAID RIGHT-OF-WAY, RUN SOUTH 04 DEGREES 25 MINUTES 36 SECONDS EAST A DISTANCE OF 19.20 FEET TO A POINT; THENCE RUN SOUTH 89 DEGREES 11 MINUTES 24 SECONDS WEST A DISTANCE OF 608.80 FEET TO A POINT; THENCE RUN SOUTH 65 DEGREES 14 MINUTES 48 SECONDS WEST A DISTANCE OF 75.31 FEET TO A POINT; THENCE RUN SOUTH 28 DEGREES 48 MINUTES 09 SECONDS WEST A DISTANCE OF 43.94 FEET TO A POINT; THENCE RUN NORTH 58 DEGREES 14 MINUTES 09 SECONDS WEST A DISTANCE OF 96.36 FEET BACK TO THE POINT OF BEGINNING.

SAID PIECE OR PORTION OF GROUND CONTAINS 0.44 ACRES (19,300.23 SQ. FT.) MORE OR LESS.

DETAIL MAP OF BOOTLEGGER ROAD-ST. TAMMANY PARISH

0.44 ACRES (19,300.23 SQ. FT.)
STATION 233+83.59 TO 241+62.93
ALONG BOOTLEGGER ROAD

St. Tammany Parish, Louisiana

for

ST. TAMMANY PARISH ROADWAY IMPROVEMENTS

Survey No. 2005392 SOUTH_009
Date: DECEMBER, 2007

Drawn by: SPH
Revised:

Scale: 1" = 120'

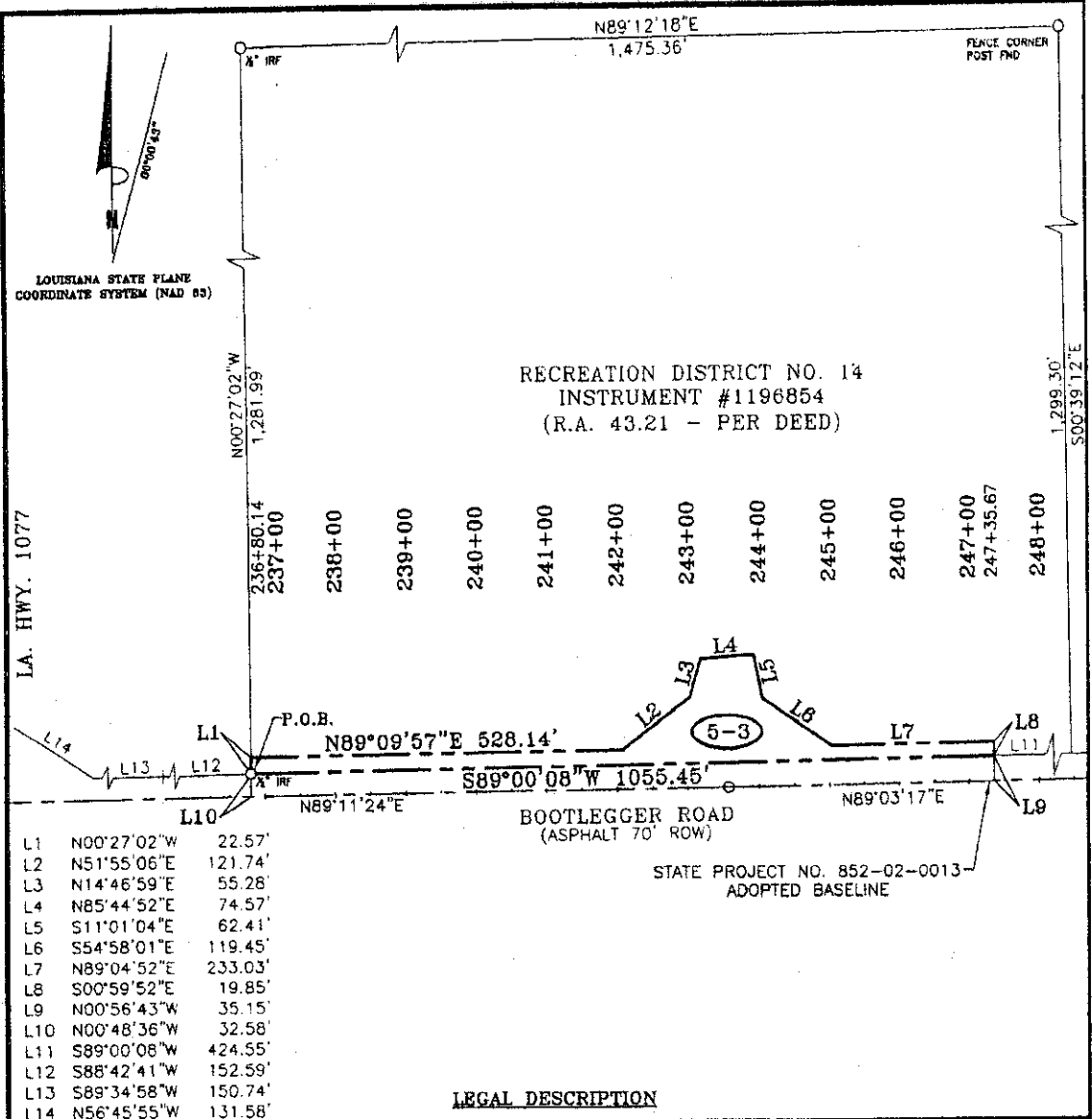
This Survey is Certified
True and Correct By

JOHN E. BONNEAU & ASSOCIATES, INC.

Professional Land Surveyors • Planners and Consultants

420 HWY. 1085, EXIT #57 • MADISONVILLE, LA. 70447
 (985)845-1012 • (985)845-1013 • (985)845-1351 • FAX NO. (985)845-1778
 www.JEBCOLandSurveying.com • e-mail: jebco1@bellsouth.net

John E. Bonneau
Professional Land Surveyor
Registration No. 4423



RECREATION DISTRICT NO. 14
 INSTRUMENT #1196854
 (R.A. 43.21 - PER DEED)

LA. HWY. 1077

L1	N00°27'02"W	22.57'
L2	N51°55'06"E	121.74'
L3	N14°46'59"E	55.28'
L4	N85°44'52"E	74.57'
L5	S11°01'04"E	62.41'
L6	S54°58'01"E	119.45'
L7	N89°04'52"E	233.03'
L8	S00°59'52"E	19.85'
L9	N00°56'43"W	35.15'
L10	N00°48'36"W	32.58'
L11	S89°00'08"W	424.55'
L12	S88°42'41"W	152.59'
L13	S89°34'58"W	150.74'
L14	N56°45'55"W	131.58'

LEGAL DESCRIPTION

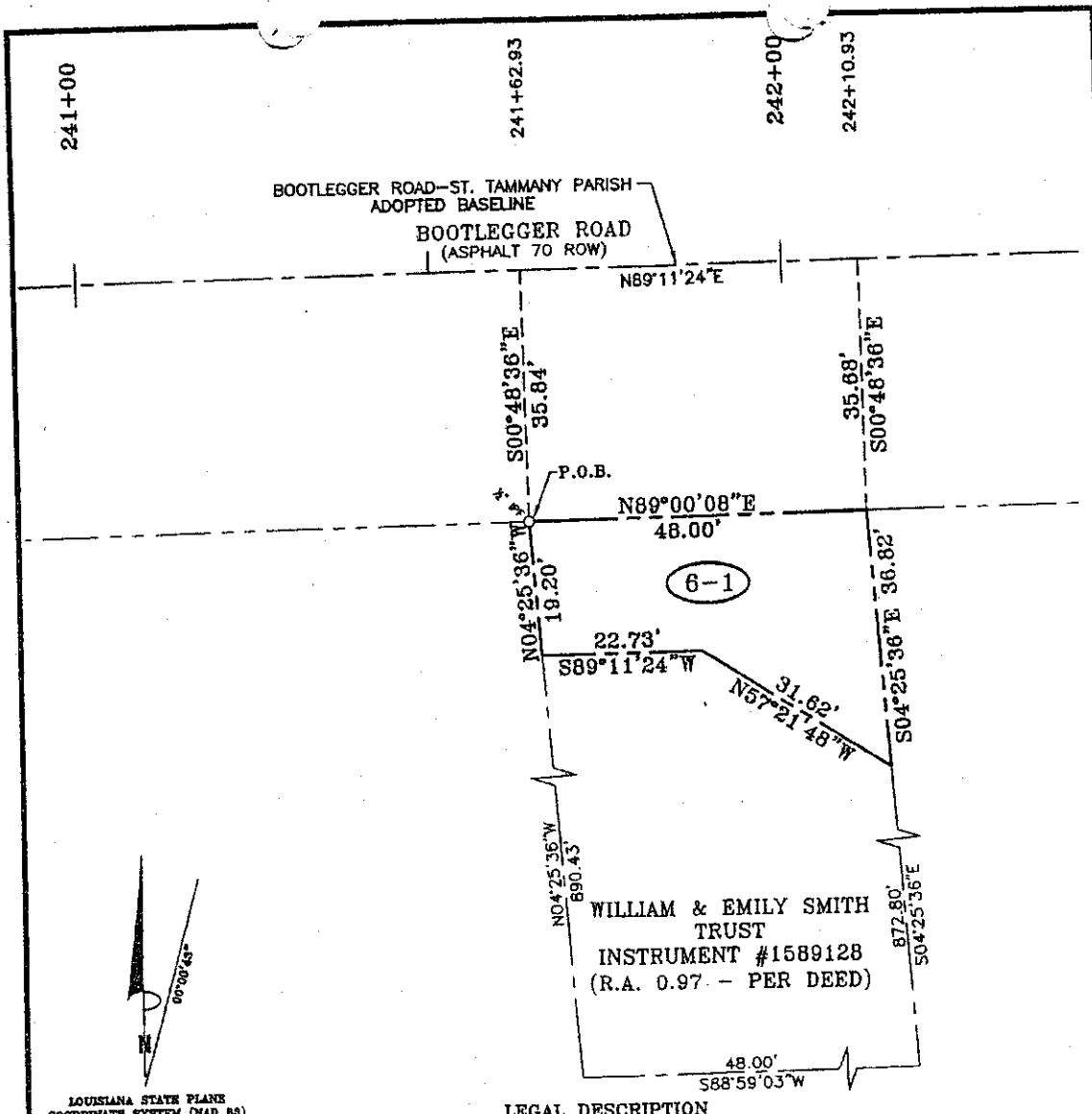
A CERTAIN PIECE OR PORTION OF GROUND SITUATED IN SECTION 3, TOWNSHIP 7 SOUTH, RANGE 10 EAST, ST. TAMMANY PARISH, LOUISIANA, COMMENCING AT THE STATION 236+80.14 FROM STATE PROJECT NO. 852-02-0013 ADOPTED BASELINE RUN NORTH 00 DEGREES 48 MINUTES 36 SECONDS WEST A DISTANCE OF 32.58 FEET TO A POINT ON THE NORTHERLY RIGHT-OF-WAY LINE OF LA. HWY. 1085 AND THE POINT OF BEGINNING.

FROM THE POINT OF BEGINNING AND LEAVING SAID RIGHT-OF-WAY, RUN NORTH 00 DEGREES 27 MINUTES 02 SECONDS WEST A DISTANCE OF 22.57 FEET TO A POINT; THENCE RUN NORTH 89 DEGREES 09 MINUTES 57 SECONDS EAST A DISTANCE OF 528.14 FEET TO A POINT; THENCE RUN NORTH 51 DEGREES 55 MINUTES 06 SECONDS EAST A DISTANCE OF 121.74 FEET TO A POINT; THENCE RUN NORTH 14 DEGREES 46 MINUTES 59 SECONDS EAST A DISTANCE OF 55.28 FEET TO A POINT; THENCE RUN NORTH 85 DEGREES 44 MINUTES 52 SECONDS EAST A DISTANCE OF 74.57 FEET TO A POINT; THENCE RUN SOUTH 11 DEGREES 01 MINUTES 04 SECONDS EAST A DISTANCE OF 62.41 FEET TO A POINT; THENCE RUN SOUTH 54 DEGREES 58 MINUTES 01 SECONDS EAST A DISTANCE OF 119.45 FEET TO A POINT; THENCE RUN NORTH 89 DEGREES 04 MINUTES 52 SECONDS EAST A DISTANCE OF 233.03 FEET TO A POINT; THENCE RUN SOUTH 00 DEGREES 59 MINUTES 52 SECONDS EAST A DISTANCE OF 19.85 FEET TO A POINT ON THE NORTHERLY RIGHT-OF-WAY OF BOOTLEGGERS ROAD; THENCE RUN ALONG SAID RIGHT-OF-WAY, SOUTH 89 DEGREES 00 MINUTES 08 SECONDS WEST A DISTANCE OF 1,055.45 FEET BACK TO THE POINT OF BEGINNING.

SAID PIECE OR PORTION OF GROUND CONTAINS 0.85 ACRES (41,426.78 SQ. FT.) MORE OR LESS.

DETAIL MAP OF STATE PROJECT NO. 852-02-0013
 0.95 ACRES (41,426.78 SQ. FT.)
 STATION 236+80.14 TO 247+35.67
 ALONG LA. HWY. 1085 NORTH RIGHT-OF-WAY LINE
 in
 St. Tammany Parish, Louisiana
 for
ST. TAMMANY PARISH ROADWAY IMPROVEMENTS

Survey No. 2005392 NORTH_007	Drawn by: SPH	Scale: 1" = 200'	This Survey is Certified True and Correct By
Date: DECEMBER, 2007	Revised:		
JOHN E. BONNEAU & ASSOCIATES, INC.			John E. Bonneau Professional Land Surveyor Registration No. 4423
Professional Land Surveyors • Planners and Consultants			
420 HWY. 1085, EXIT #57 • MADISONVILLE, LA. 70447 (985)845-1012 • (985)845-1013 • (985)845-1351 • FAX NO. (985)845-1778 www.JEBCOLandSurveying.com • e-mail: jebco1@bellsouth.net			



LOUISIANA STATE PLANE
COORDINATE SYSTEM (NAD 83)

LEGAL DESCRIPTION

A CERTAIN PIECE OR PORTION OF GROUND SITUATED IN SECTION 3, TOWNSHIP 7 SOUTH, RANGE 10 EAST, ST. TAMMANY PARISH, LOUISIANA, COMMENCING AT THE STATION 241+62.93 FROM BOOTLEGGER ROAD-ST. TAMMANY PARISH ADOPTED BASELINE RUN SOUTH 00 DEGREES 48 MINUTES 36 SECONDS EAST A DISTANCE OF 35.84 FEET TO A POINT ON THE SOUTHERLY RIGHT-OF-WAY LINE OF LA. HWY. 1085 AND THE POINT OF BEGINNING.

FROM THE POINT OF BEGINNING, RUN NORTH 89 DEGREES 00 MINUTES 08 SECONDS EAST A DISTANCE OF 48.00 FEET TO A POINT; THENCE LEAVING SAID RIGHT-OF-WAY, RUN SOUTH 04 DEGREES 25 MINUTES 36 SECONDS EAST A DISTANCE OF 36.82 FEET TO A POINT; THENCE RUN NORTH 57 DEGREES 21 MINUTES 48 SECONDS WEST A DISTANCE OF 31.62 FEET TO A POINT; THENCE RUN SOUTH 89 DEGREES 11 MINUTES 24 SECONDS WEST A DISTANCE OF 22.73 FEET TO A POINT; THENCE RUN NORTH 04 DEGREES 25 MINUTES 36 SECONDS WEST A DISTANCE OF 19.20 FEET BACK TO THE POINT OF BEGINNING.

SAID PIECE OR PORTION OF GROUND CONTAINS 0.03 ACRES (1,144.06 SQ. FT.) MORE OR LESS.

DETAIL MAP OF BOOTLEGGER ROAD-ST. TAMMANY PARISH
0.03 ACRES (1,144.06 SQ. FT.)
STATION 241+62.93 TO 242+10.93
ALONG BOOTLEGGER ROAD SOUTH RIGHT-OF-WAY LINE
 St. Tammany Parish, Louisiana
 for
ST. TAMMANY PARISH ROADWAY IMPROVEMENTS

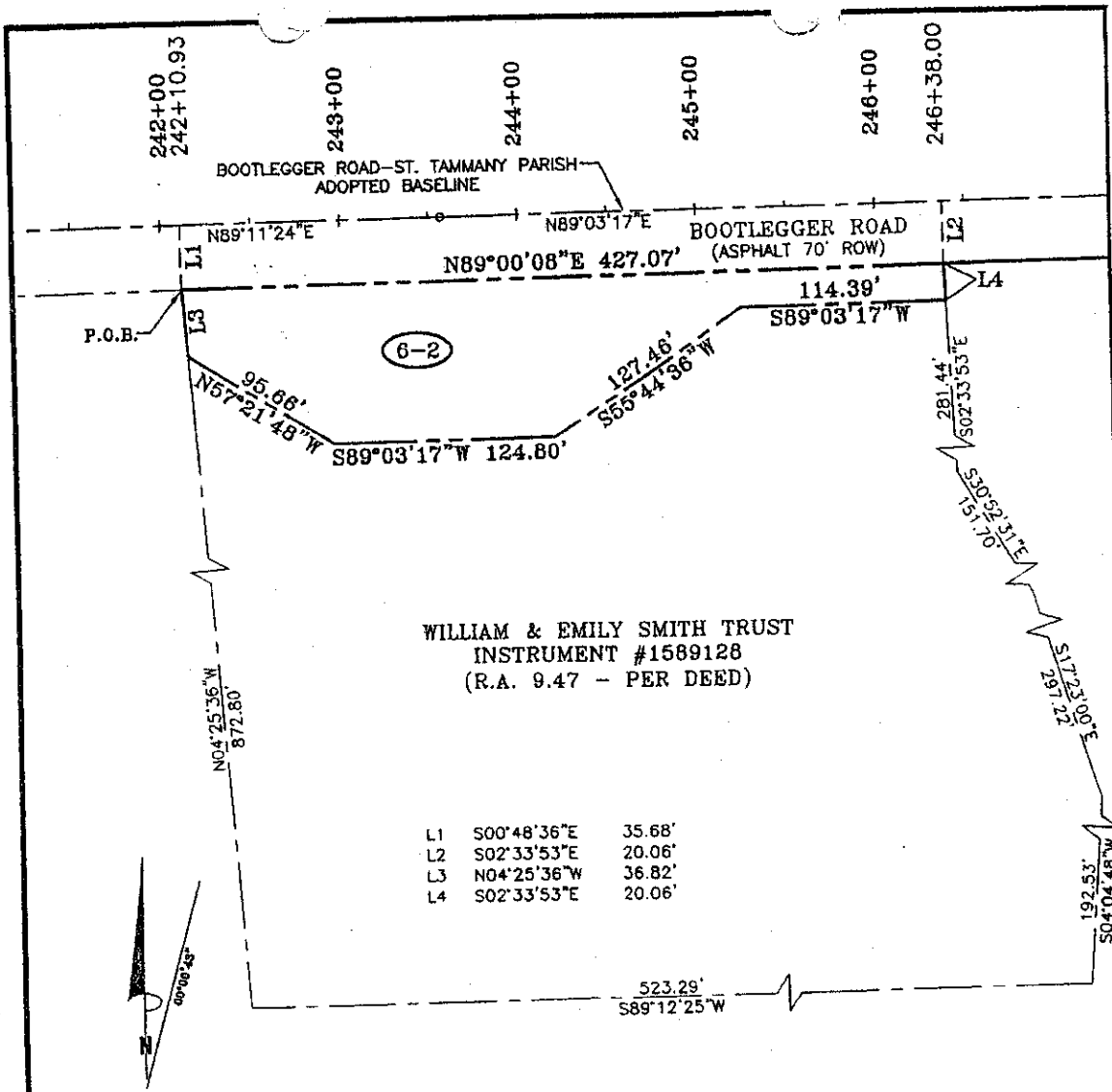
Survey No. 2005392 SOUTH_006 Drawn by: SPH Scale: 1" = 20'
 Date: DECEMBER, 2007 Revised:

This Survey is Certified True and Correct By

JOHN E. BONNEAU & ASSOCIATES, INC.
 Professional Land Surveyors • Planners and Consultants

420 HWY. 1085, EXIT #57 • MADISONVILLE, LA. 70447
 (985)845-1012 • (985)845-1013 • (985)845-1351 • FAX NO. (985)845-1778
 www.JEBCOLandSurveying.com • e-mail: jebco1@bellsouth.net

John E. Bonneau
 Professional Land Surveyor
 Registration No. 4423



WILLIAM & EMILY SMITH TRUST
 INSTRUMENT #1589128
 (R.A. 9.47 - PER DEED)

L1	S00°48'36"E	35.68'
L2	S02°33'53"E	20.06'
L3	N04°25'36"W	36.82'
L4	S02°33'53"E	20.06'

LOUISIANA STATE PLANE
 COORDINATE SYSTEM (NAD 83)

LEGAL DESCRIPTION

A CERTAIN PIECE OR PORTION OF GROUND SITUATED IN SECTION 3, TOWNSHIP 7 SOUTH, RANGE 10 EAST, ST. TAMMANY PARISH, LOUISIANA COMMENCING AT THE STATION 242+10.93 FROM BOOTLEGGER ROAD-ST. TAMMANY PARISH ADOPTED BASELINE RUN SOUTH 00 DEGREES 48 MINUTES 36 SECONDS EAST A DISTANCE OF 35.68 FEET TO A POINT ON THE SOUTHERLY RIGHT-OF-WAY LINE OF BOOTLEGGER ROAD AND THE POINT OF BEGINNING.

FROM THE POINT OF BEGINNING, RUN NORTH 89 DEGREES 00 MINUTES 08 SECONDS EAST A DISTANCE OF 427.07 FEET TO A POINT; THENCE LEAVING SAID RIGHT-OF-WAY, RUN SOUTH 02 DEGREES 33 MINUTES 53 SECONDS EAST A DISTANCE OF 20.06 FEET TO A POINT; THENCE RUN SOUTH 89 DEGREES 03 MINUTES 17 SECONDS WEST A DISTANCE 114.39 FEET TO A POINT; THENCE RUN SOUTH 55 DEGREES 44 MINUTES 38 SECONDS WEST A DISTANCE OF 127.46 FEET TO A POINT; THENCE RUN SOUTH 89 DEGREES 03 MINUTES 17 SECONDS WEST A DISTANCE OF 124.80 FEET TO A POINT; THENCE RUN NORTH 57 DEGREES 21 MINUTES 48 SECONDS WEST A DISTANCE OF 95.68 FEET TO A POINT; THENCE RUN NORTH 04 DEGREES 25 MINUTES 36 SECONDS WEST A DISTANCE OF 36.82 FEET BACK TO THE POINT OF BEGINNING.

SAID PIECE OR PORTION OF GROUND CONTAINS 0.56 ACRES (24,419.60 SQ. FT.) MORE OR LESS.

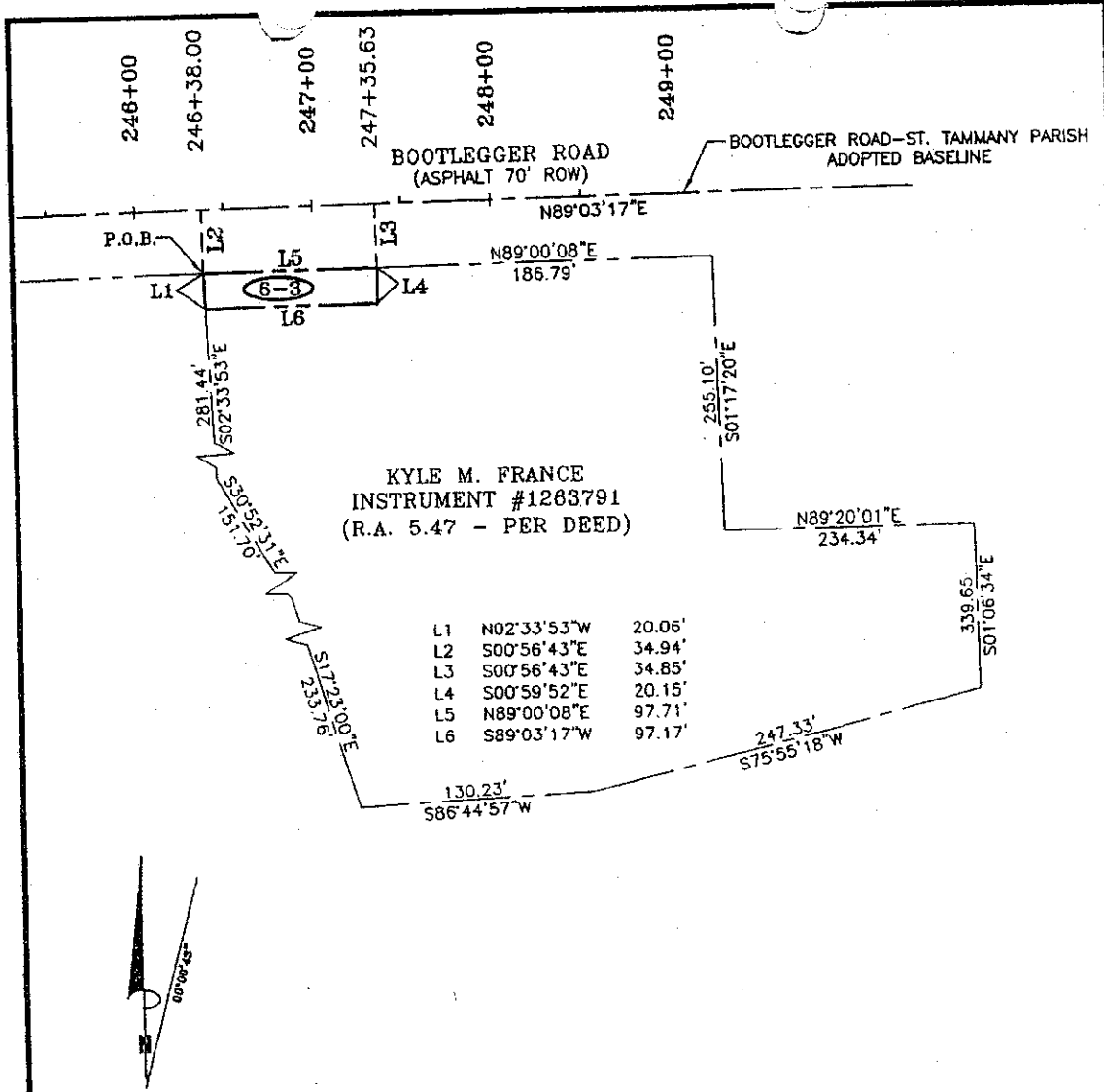
DETAIL MAP OF BOOTLEGGER ROAD-ST. TAMMANY PARISH
 0.56 ACRES (24,419.60 SQ. FT.)
 STATION 242+10.93 TO 246+38.00
 ALONG LA. HWY. 1085 SOUTH RIGHT-OF-WAY LINE
 St. Tammany Parish, Louisiana
 for
ST. TAMMANY PARISH ROADWAY IMPROVEMENTS

Survey No. 2005392 SOUTH_007 Drawn by: SPH Scale: 1" = 80'
 Date: DECEMBER, 2007 Revised:

This Survey is Certified True and Correct By

JOHN E. BONNEAU & ASSOCIATES, INC.
 Professional Land Surveyors • Planners and Consultants
 420 HWY. 1085, EXIT #57 • MADISONVILLE, LA. 70447
 (985)845-1012 • (985)845-1013 • (985)845-1351 • FAX NO. (985)845-1778
 www.JEBCOLandSurveying.com • e-mail: jebco1@bellsouth.net

John E. Bonneau
 Professional Land Surveyor
 Registration No. 4423



KYLE M. FRANCE
INSTRUMENT #1263791
(R.A. 5.47 - PER DEED)

L1	N02°33'53"W	20.06'
L2	S00°56'43"E	34.94'
L3	S00°56'43"E	34.85'
L4	S00°59'52"E	20.15'
L5	N89°00'08"E	97.71'
L6	S89°03'17"W	97.17'

LOUISIANA STATE PLANE
COORDINATE SYSTEM (MAD 89)

LEGAL DESCRIPTION

A CERTAIN PIECE OR PORTION OF GROUND SITUATED IN SECTION 3, TOWNSHIP 7 SOUTH, RANGE 10 EAST, ST. TAMMANY PARISH, LOUISIANA, COMMENCING AT THE STATION 246+38.00 FROM BOOTLEGGER ROAD-ST. TAMMANY PARISH ADOPTED BASELINE RUN SOUTH 00 DEGREES 58 MINUTES 43 SECONDS EAST A DISTANCE OF 34.94 FEET TO A POINT ON THE SOUTHERLY RIGHT-OF-WAY LINE OF BOOTLEGGER ROAD AND THE POINT OF BEGINNING.

FROM THE POINT OF BEGINNING, RUN NORTH 89 DEGREES 00 MINUTES 08 SECONDS EAST A DISTANCE OF 97.71 FEET TO A POINT; THENCE LEAVING SAID RIGHT-OF-WAY, RUN SOUTH 00 DEGREES 59 MINUTES 52 SECONDS EAST A DISTANCE OF 20.15 FEET TO A POINT; THENCE RUN SOUTH 89 DEGREES 03 MINUTES 17 SECONDS WEST A DISTANCE OF 97.17 FEET TO A POINT; THENCE RUN NORTH 02 DEGREES 33 MINUTES 53 SECONDS WEST A DISTANCE OF 20.06 FEET BACK TO THE POINT OF BEGINNING.

SAID PIECE OR PORTION OF GROUND CONTAINS 0.04 ACRES (1,958.71 SQ. FT.) MORE OR LESS.

DETAIL MAP OF BOOTLEGGER ROAD-ST. TAMMANY PARISH
0.04 ACRES (1,958.71 SQ. FT.)
STATION 246+38.00 TO 247+35.63
ALONG BOOTLEGGER ROAD SOUTH RIGHT-OF-WAY LINE
St. Tammany Parish, Louisiana
for
ST. TAMMANY PARISH ROADWAY IMPROVEMENTS

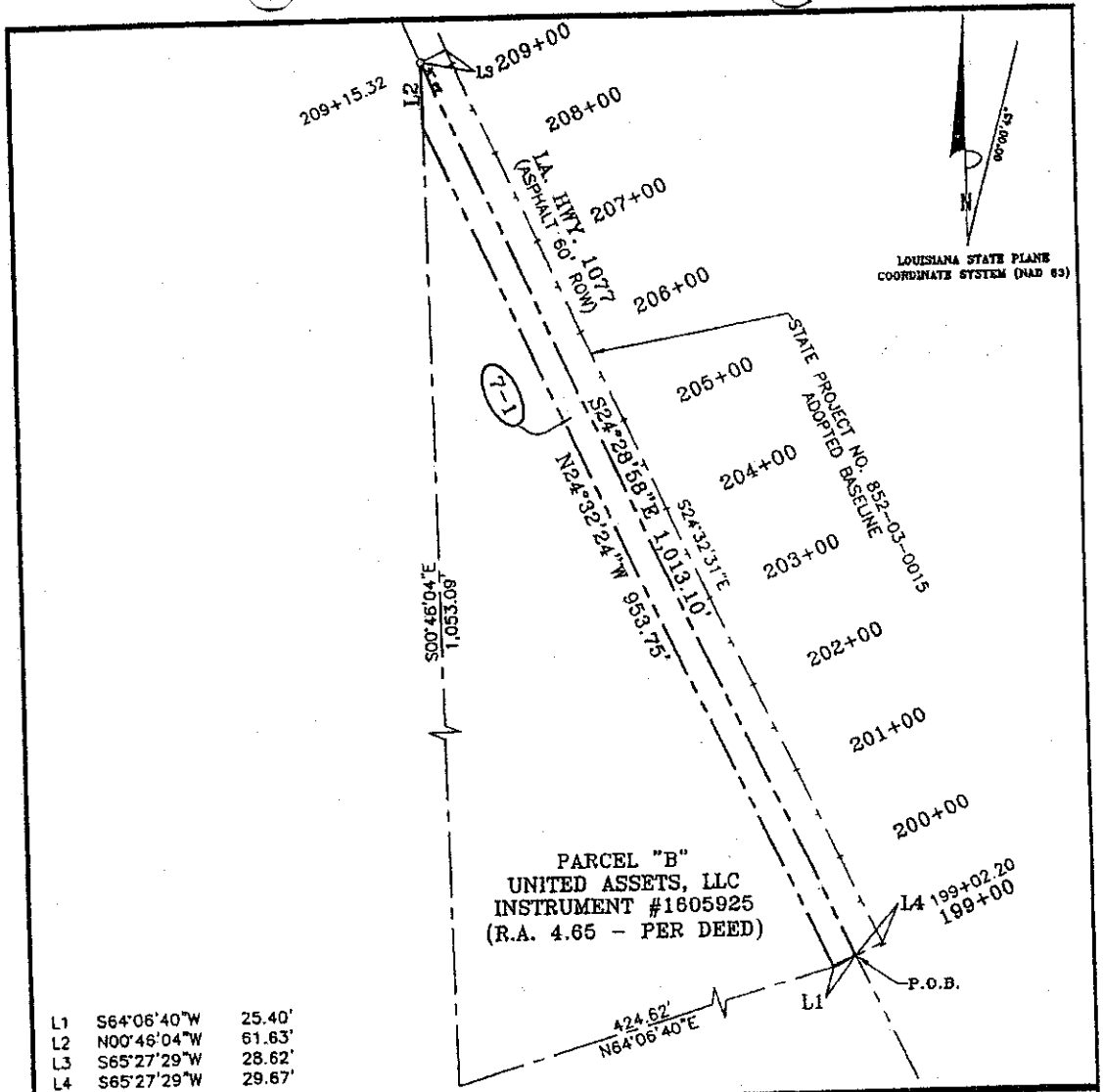
Survey No. 2005392 SOUTH_008 Drawn by: SPH Scale: 1" = 80'
Date: DECEMBER, 2007 Revised:

This Survey is Certified True and Correct By

JOHN E. BONNEAU & ASSOCIATES, INC.
Professional Land Surveyors • Planners and Consultants

420 HWY. 1085, EXIT #57 • MADISONVILLE, LA. 70447
(985)845-1012 • (985)845-1013 • (985)845-1351 • FAX NO. (985)845-1778
www.JEBCOLandSurveying.com • e-mail: jebco1@bellsouth.net

John E. Bonneau
Professional Land Surveyor
Registration No. 4423



L1	S64°06'40"W	25.40'
L2	N00°46'04"W	61.63'
L3	S65°27'29"W	28.62'
L4	S65°27'29"W	29.67'

LEGAL DESCRIPTION

A CERTAIN PIECE OR PORTION OF GROUND SITUATED IN SECTION 3, TOWNSHIP 7 SOUTH, RANGE 10 EAST, ST. TAMMANY PARISH, LOUISIANA, COMMENCING AT THE STATION 199+02.20 FROM STATE PROJECT NO. 852-03-0015 ADOPTED BASELINE RUN SOUTH 65 DEGREES 27 MINUTES 29 SECONDS WEST A DISTANCE OF 29.67 FEET TO A POINT ON THE WESTERLY RIGHT-OF-WAY LINE OF LA. HWY. 1077 AND THE POINT OF BEGINNING.

FROM THE POINT OF BEGINNING AND LEAVING SAID RIGHT-OF-WAY, RUN SOUTH 64 DEGREES 06 MINUTES 40 SECONDS WEST A DISTANCE OF 25.40 FEET TO A POINT; THENCE RUN NORTH 00 DEGREES 32 MINUTES 24 SECONDS WEST A DISTANCE OF 953.75 FEET TO A POINT; THENCE RUN NORTH 00 DEGREES 46 MINUTES 04 SECONDS WEST A DISTANCE OF 65.51 FEET TO A POINT ON THE WESTERLY RIGHT-OF-WAY OF LA. HWY. 1077; THENCE RUN ALONG SAID RIGHT-OF-WAY, SOUTH 24 DEGREES 28 MINUTES 58 SECONDS EAST A DISTANCE OF 1,013.10 FEET BACK TO THE POINT OF BEGINNING.

SAID PIECE OR PORTION OF GROUND CONTAINS 0.58 ACRES (25,454.87 SQ. FT.) MORE OR LESS.

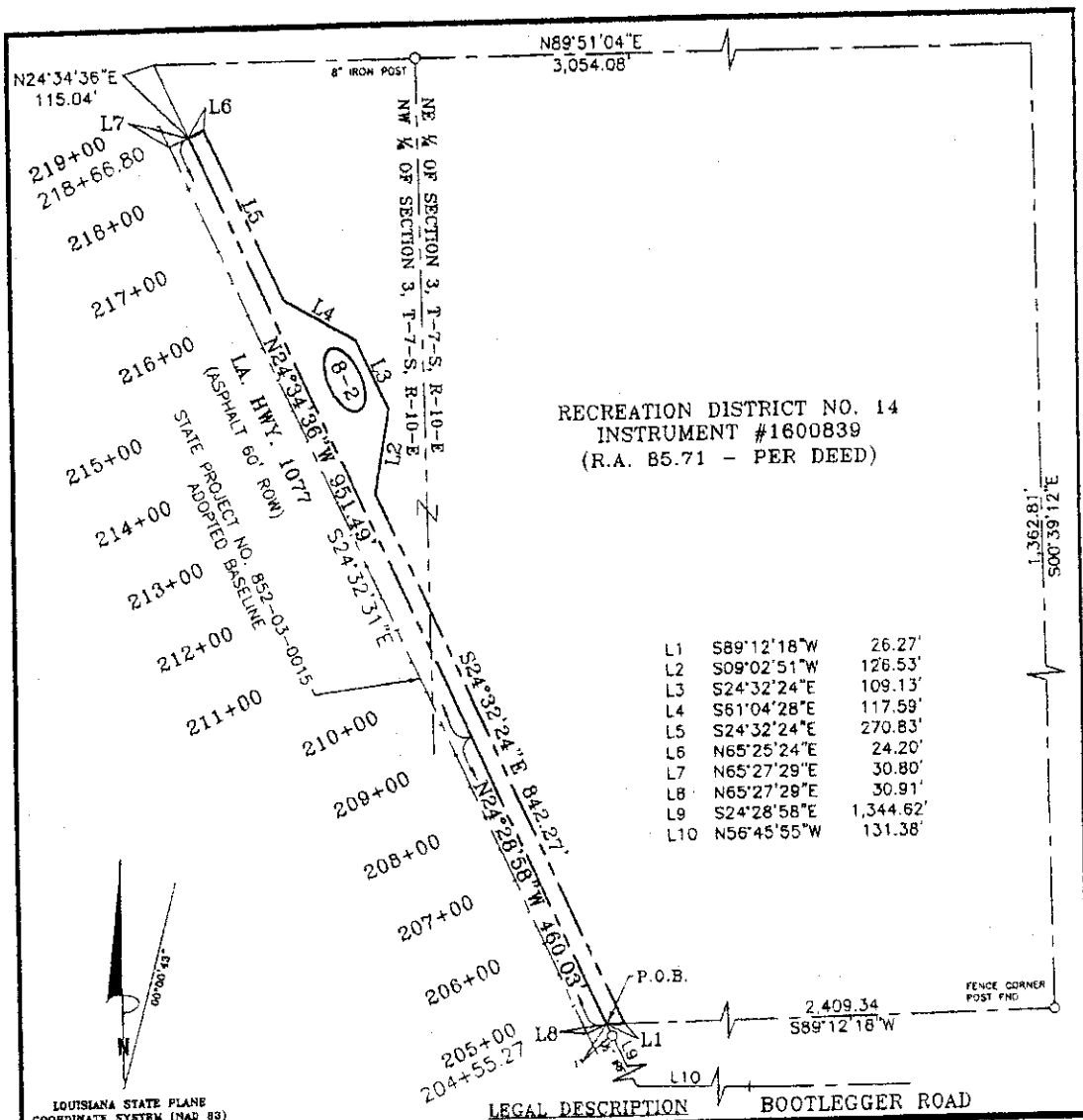
DETAIL MAP OF STATE PROJECT NO. 852-03-0015
 0.58 ACRES (25,454.87 SQ. FT.)
 STATION 199+02.20 TO 209+15.32
 ALONG LA. HWY. 1077 WEST RIGHT-OF-WAY LINE
 St. Tammany Parish, Louisiana
 for
ST. TAMMANY PARISH ROADWAY IMPROVEMENTS

Survey No. 2005392 WEST_003 Drawn by: SPH Scale: 1" = 140'
 Date: DECEMBER, 2007 Revised:

This Survey is Certified True and Correct By

JOHN E. BONNEAU & ASSOCIATES, INC.
 Professional Land Surveyors • Planners and Consultants
 420 HWY. 1085, EXT #57 • MADISONVILLE, LA. 70447
 (985)845-1012 • (985)845-1013 • (985)845-1351 • FAX NO. (985)845-1778
 www.JEBCOLandSurveying.com • e-mail: jebcol@bellsouth.net

John E. Bonneau
 Professional Land Surveyor
 Registration No. 4423



LEGAL DESCRIPTION BOOTLEGGERS ROAD

A CERTAIN PIECE OR PORTION OF GROUND SITUATED IN SECTION 3, TOWNSHIP 7 SOUTH, RANGE 10 EAST, ST. TAMMANY PARISH, LOUISIANA, COMMENCING AT THE STATION 204+55.27 FROM STATE PROJECT NO. 852-03-0015 ADOPTED BASELINE RUN NORTH 65 DEGREES 27 MINUTES 29 SECONDS EAST A DISTANCE OF 30.91 FEET TO A POINT ON THE EASTERLY RIGHT-OF-WAY LINE OF LA. HWY. 1077 AND THE POINT OF BEGINNING.

FROM THE POINT OF BEGINNING, RUN ALONG SAID RIGHT-OF-WAY NORTH 24 DEGREES 28 MINUTES 58 SECONDS WEST A DISTANCE OF 460.03 FEET TO A POINT; THENCE CONTINUE ALONG SAID RIGHT-OF-WAY NORTH 24 DEGREES 34 MINUTES 36 SECONDS WEST A DISTANCE OF 951.49 FEET TO A POINT; THENCE LEAVING SAID RIGHT-OF-WAY RUN NORTH 65 DEGREES 25 MINUTES 24 SECONDS EAST A DISTANCE OF 24.20 FEET TO A POINT; THENCE RUN SOUTH 24 DEGREES 32 MINUTES 24 SECONDS EAST A DISTANCE OF 270.83 FEET TO A POINT; THENCE RUN SOUTH 61 DEGREES 04 MINUTES 28 SECONDS EAST A DISTANCE OF 117.59 FEET TO A POINT; THENCE RUN SOUTH 24 DEGREES 32 MINUTES 24 SECONDS EAST A DISTANCE OF 109.13 FEET TO A POINT; THENCE RUN SOUTH 09 DEGREES 02 MINUTES 51 SECONDS WEST A DISTANCE OF 126.53 FEET TO A POINT; THENCE RUN SOUTH 24 DEGREES 32 MINUTES 24 SECONDS EAST A DISTANCE OF 842.27 FEET TO A POINT; THENCE RUN SOUTH 89 DEGREES 12 MINUTES 18 SECONDS WEST A DISTANCE OF 26.27 FEET BACK TO THE POINT OF BEGINNING.

SAID PIECE OR PORTION OF GROUND CONTAINS 1.11 ACRES (48,454.51 SQ. FT.) MORE OR LESS.

DETAIL MAP OF STATE PROJECT NO. 852-03-0015

1.11 ACRES (48,454.51 SQ. FT.)

STATION 204+55.27 TO 218+66.80

ALONG LA. HWY. 1077 EAST RIGHT-OF-WAY LINE

St. Tammany Parish, Louisiana

for

ST. TAMMANY PARISH ROADWAY IMPROVEMENTS

Survey No. 2005392 EAST_003 Drawn by: SPH Scale: 1" = 200'

Date: DECEMBER, 2007 Revised:

JOHN E. BONNEAU & ASSOCIATES, INC.

Professional Land Surveyors Planners and Consultants

420 HWY. 1085, EXIT #57 • MADISONVILLE, LA. 70447

(985)845-1012 • (985)845-1013 • (985)845-1351 • FAX NO. (985)845-1778

www.JEBCOLandSurveying.com • e-mail: jebco1@bellsouth.net

This Survey is Certified True and Correct By

John E. Bonneau
Professional Land Surveyor
Registration No. 4423

VILLAGE LANE
EXTENSION PROJECT

DESCRIPTION OF
PARCEL 1-1 VILLAGE LANE

DESCRIPTION OF A 2.337 ACRE PARCEL OF LAND LOCATED IN PARISH OF ST. TAMMANY, STATE OF LOUISIANA.

SAID 2.337 ACRE PARCEL BEING MORE FULLY DESCRIBED AS FOLLOWS:

COMMENCING AT A 5/8" IRON ROD LOCATED AT THE SECTION CORNER COMMON TO SECTIONS 9, 10, 15 AND 16 TOWNSHIP 7 SOUTH, RANGE 11 EAST, GREENSBURG LAND DISTRICT, PARISH OF ST. TAMMANY, STATE OF LOUISIANA; THENCE SOUTH 89°58'14" EAST FOR A DISTANCE OF 1024.15 FEET TO A POINT AND CORNER THENCE SOUTH 00°01'46" WEST FOR A DISTANCE OF 1.00 FEET TO THE POINT OF BEGINNING;

THENCE SOUTH 89°58'14" EAST FOR A DISTANCE OF 6.76 FEET TO A POINT AND CORNER;

THENCE, ALONG A TANGENT CURVE TO THE RIGHT WITH A RADIUS OF 200.00 FEET, THE CHORD OF WHICH BEARS SOUTH 72°02'23" EAST FOR A DISTANCE OF 123.15 FEET; THENCE ALONG THE ARC OF SAID CURVE FOR A DISTANCE OF 125.18 FEET TO A POINT AND CORNER;

THENCE, ALONG A COMPOUND CURVE TO THE RIGHT WITH A RADIUS OF 200.00 FEET, THE CHORD OF WHICH BEARS SOUTH 44°32'21" EAST FOR A DISTANCE OF 66.50 FEET; THENCE ALONG THE ARC OF SAID CURVE FOR A DISTANCE OF 66.81 FEET TO A POINT AND CORNER;

THENCE SOUTH 34°58'14" EAST FOR A DISTANCE OF 21.02 FEET TO A POINT AND CORNER;

THENCE SOUTH 34°58'16" EAST FOR A DISTANCE OF 25.80 FEET TO A POINT AND CORNER;

THENCE, ALONG A NON-TANGENT CURVE TO THE LEFT HAVING A RADIUS OF 150.00 FEET, THE LONG CHORD OF WHICH BEARS SOUTH 62°28'12" EAST FOR A DISTANCE OF 138.52 FEET FOR AN ARC LENGTH OF 143.99 FEET TO A POINT;

THENCE NORTH 00°21'12" WEST FOR A DISTANCE OF 1.00 FEET TO A POINT AND CORNER;

THENCE SOUTH 89°58'14" EAST FOR A DISTANCE OF 1510.52 FEET TO A POINT AND CORNER;

THENCE SOUTH 00°16'29" EAST FOR A DISTANCE OF 80.00 FEET TO A POINT AND CORNER;

THENCE NORTH 89°58'14" WEST FOR A DISTANCE OF 100.09 FEET TO A POINT AND CORNER;

THENCE, ALONG A TANGENT CURVE TO THE RIGHT WITH A RADIUS OF 349.21 FEET, THE CHORD OF WHICH BEARS NORTH 80°28'56" WEST FOR A DISTANCE OF 115.13 FEET; THENCE ALONG THE ARC OF SAID CURVE FOR A DISTANCE OF 115.66 FEET TO A POINT AND CORNER;

THENCE, ALONG A REVERSE CURVE TO THE LEFT WITH A RADIUS OF 313.21 FEET, THE CHORD OF WHICH BEARS NORTH 74°24'56" WEST FOR A DISTANCE OF 37.39 FEET; THENCE ALONG THE ARC OF SAID CURVE FOR A DISTANCE OF 37.41 FEET TO A POINT AND CORNER;

THENCE NORTH 89°58'14" WEST FOR A DISTANCE OF 1261.27 FEET TO A POINT AND CORNER;

THENCE, ALONG A TANGENT CURVE TO THE RIGHT WITH A RADIUS OF 200.00 FEET, THE CHORD OF WHICH BEARS NORTH 62°28'12" WEST FOR A DISTANCE OF 184.70 FEET; THENCE ALONG THE ARC OF SAID CURVE FOR A DISTANCE OF 191.99 FEET TO A POINT AND CORNER;

THENCE NORTH 34°58'14" WEST FOR A DISTANCE OF 46.81 FEET TO A POINT AND CORNER;

THENCE, ALONG A TANGENT CURVE TO THE LEFT WITH A RADIUS OF 150.00 FEET, THE CHORD OF WHICH BEARS NORTH 62°28'14" WEST FOR A DISTANCE OF 138.52 FEET; THENCE ALONG THE ARC OF SAID CURVE FOR A DISTANCE OF 143.99 FEET TO A POINT AND CORNER;

THENCE SOUTH 89°57'41" WEST FOR A DISTANCE OF 6.76 FEET TO A POINT AND CORNER;

THENCE NORTH 00°01'46" EAST FOR A DISTANCE OF 50.00 FEET TO A POINT AND CORNER;

THE POINT OF BEGINNING.

CONTAINING: 102,159 SQUARE FEET OR 2.345 ACRES OF LAND, MORE OR LESS.

DESCRIPTION OF
PARCEL 3-1 VILLAGE LANE

DESCRIPTION OF A 0.008 ACRE PARCEL OF LAND LOCATED IN PARISH OF ST. TAMMANY, STATE OF LOUISIANA.

SAID 0.008 ACRE PARCEL BEING MORE FULLY DESCRIBED AS FOLLOWS:

COMMENCING AT A 5/8" IRON ROD LOCATED AT THE SECTION CORNER COMMON TO SECTIONS 9, 10, 15 AND 16 TOWNSHIP 7 SOUTH, RANGE 11 EAST, GREENSBURG LAND DISTRICT, PARISH OF ST. TAMMANY, STATE OF LOUISIANA; THENCE SOUTH 89°58'14" EAST FOR A DISTANCE OF 1343.20 TO A POINT AND CORNER; THENCE SOUTH 00°21'12" EAST FOR A DISTANCE OF 175.83 FEET TO THE POINT OF BEGINNING;

THENCE, ALONG A CURVE TO THE LEFT HAVING A RADIUS OF 350.00 FEET, THE LONG CHORD OF WHICH BEARS SOUTH 82°31'09" EAST FOR A DISTANCE OF 90.78 FEET FOR AN ARC LENGTH OF 91.03 FEET TO A POINT;

THENCE NORTH 89°58'14" WEST FOR A DISTANCE OF 89.93 FEET TO A POINT AND CORNER;

THENCE NORTH 00°21'12" WEST FOR A DISTANCE OF 11.77 FEET TO THE POINT OF BEGINNING.

CONTAINING: 350 SQUARE FEET OR 0.008 ACRES OF LAND, MORE OR LESS.

DESCRIPTION OF
PARCEL 3-2 VILLAGE LANE

DESCRIPTION OF A 0.055 ACRE PARCEL OF LAND LOCATED IN PARISH OF ST. TAMMANY, STATE OF LOUISIANA.

SAID 0.055 ACRE PARCEL BEING MORE FULLY DESCRIBED AS FOLLOWS:

COMMENCING AT A 5/8" IRON ROD LOCATED AT THE SECTION CORNER COMMON TO SECTIONS 9, 10, 15 AND 16 TOWNSHIP 7 SOUTH, RANGE 11 EAST, GREENSBURG LAND DISTRICT, PARISH OF ST. TAMMANY, STATE OF LOUISIANA; THENCE SOUTH 89°58'14" EAST FOR A DISTANCE OF 1343.20 TO A POINT AND CORNER; THENCE SOUTH 00°21'12" EAST FOR A DISTANCE OF 175.83 FEET TO THE **POINT OF BEGINNING**;

THENCE SOUTH 00°21'12" EAST FOR A DISTANCE OF 12.76 FEET TO A POINT AND CORNER;

THENCE, ALONG A NON-TANGENT CURVE TO THE RIGHT HAVING A RADIUS OF 150.00 FEET, THE LONG CHORD OF WHICH BEARS NORTH 62°28'12" WEST FOR A DISTANCE OF 138.52 FEET FOR AN ARC LENGTH OF 143.99 FEET TO A POINT;

THENCE NORTH 34°58'16" WEST FOR A DISTANCE OF 25.80 FEET TO A POINT AND CORNER;

THENCE, ALONG A NON-TANGENT CURVE TO THE LEFT HAVING A RADIUS OF 350.00 FEET, THE LONG CHORD OF WHICH BEARS SOUTH 62°14'19" EAST FOR A DISTANCE OF 155.43 FEET FOR AN ARC LENGTH OF 156.74 FEET TO THE **POINT OF BEGINNING**.

CONTAINING: 2,376 SQUARE FEET OR 0.055 ACRES OF LAND, MORE OR LESS.

DESCRIPTION OF
PARCEL 4-1 VILLAGE LANE

DESCRIPTION OF A 0.069 ACRE PARCEL OF LAND LOCATED IN PARISH OF ST. TAMMANY, STATE OF LOUISIANA.

SAID 0.069 ACRE PARCEL BEING MORE FULLY DESCRIBED AS FOLLOWS:

COMMENCING AT A 5/8" IRON ROD LOCATED AT THE SECTION CORNER COMMON TO SECTIONS 9, 10, 15 AND 16 TOWNSHIP 7 SOUTH, RANGE 11 EAST, GREENSBURG LAND DISTRICT, PARISH OF ST. TAMMANY, STATE OF LOUISIANA; THENCE SOUTH 89°58'14" EAST FOR A DISTANCE OF 1024.15 FEET TO A POINT AND CORNER; THENCE SOUTH 00°01'46" WEST FOR A DISTANCE OF 51.00' TO A POINT AND CORNER THENCE NORTH 89°57'41" EAST FOR A DISTANCE OF 6.76 FEET TO THE **POINT OF BEGINNING**;

THENCE, ALONG A CURVE TO THE RIGHT HAVING A RADIUS OF 150.00 FEET, THE LONG CHORD OF WHICH BEARS SOUTH 62°28'14" EAST FOR A DISTANCE OF 138.52 FEET FOR AN ARC LENGTH OF 143.99 FEET TO A POINT;

THENCE SOUTH 34°58'14" EAST FOR A DISTANCE OF 45.02 FEET TO A POINT AND CORNER;

THENCE NORTH 55°49'36" WEST FOR A DISTANCE OF 179.66 FEET TO THE **POINT OF BEGINNING**.

CONTAINING: 3,024 SQUARE FEET OR 0.069 ACRES OF LAND, MORE OR LESS.

DESCRIPTION OF
PARCEL 4-2 VILLAGE LANE

DESCRIPTION OF A 0.081 ACRE PARCEL OF LAND LOCATED IN PARISH OF ST. TAMMANY, STATE OF LOUISIANA IN ACCORDANCE WITH A PLAN ENTITLED DEFAULT, DATED DEFAULT AND LAST REVISED DEFAULT.

SAID 0.081 ACRE PARCEL BEING MORE FULLY DESCRIBED AS FOLLOWS:

COMMENCING AT A 5/8" IRON ROD LOCATED AT THE SECTION CORNER COMMON TO SECTIONS 9, 10, 15 AND 16 TOWNSHIP 7 SOUTH, RANGE 11 EAST, GREENSBURG LAND DISTRICT, PARISH OF ST. TAMMANY, STATE OF LOUISIANA; THENCE SOUTH 89°58'14" EAST FOR A DISTANCE OF 954.99 FEET TO THE **POINT OF BEGINNING**;

THENCE SOUTH 89°58'14" EAST FOR A DISTANCE OF 69.16 FEET TO A POINT AND CORNER;

THENCE SOUTH 00°01'46" WEST FOR A DISTANCE OF 51.00 FEET TO A POINT AND CORNER;

THENCE NORTH 89°58'14" WEST FOR A DISTANCE OF 68.97 FEET TO A POINT AND CORNER;

THENCE NORTH 00°11'08" WEST FOR A DISTANCE OF 51.00 FEET TO THE **POINT OF BEGINNING**.

CONTAINING: 3,522 SQUARE FEET OR 0.081 ACRES OF LAND, MORE OR LESS.

DESCRIPTION OF
PARCEL 4-3 VILLAGE LANE

DESCRIPTION OF A 0.024 ACRE PARCEL OF LAND LOCATED IN PARISH OF ST. TAMMANY, STATE OF LOUISIANA.

SAID 0.024 ACRE PARCEL BEING MORE FULLY DESCRIBED AS FOLLOWS:

COMMENCING AT A 5/8" IRON ROD LOCATED AT THE SECTION CORNER COMMON TO SECTIONS 9, 10, 15 AND 16 TOWNSHIP 7 SOUTH, RANGE 11 EAST, GREENSBURG LAND DISTRICT, PARISH OF ST. TAMMANY, STATE OF LOUISIANA; THENCE SOUTH 89°58'14" EAST FOR A DISTANCE OF 1024.15 FEET TO THE **POINT OF BEGINNING**;

THENCE SOUTH 89°58'14" EAST FOR A DISTANCE OF 100.20 FEET TO A POINT AND CORNER;

THENCE, ALONG A NON-TANGENT CURVE TO THE LEFT HAVING A RADIUS OF 350.00 FEET, THE LONG CHORD OF WHICH BEARS SOUTH 31°20'58" EAST FOR A DISTANCE OF 45.57 FEET FOR AN ARC LENGTH OF 45.60 FEET TO A POINT;

THENCE, ALONG A NON-TANGENT CURVE TO THE LEFT HAVING A RADIUS OF 200.00 FEET, THE LONG CHORD OF WHICH BEARS NORTH 72°02'23" WEST FOR A DISTANCE OF 123.15 FEET FOR AN ARC LENGTH OF 125.18 FEET TO A POINT;

THENCE NORTH 89°58'14" WEST FOR A DISTANCE OF 6.76 FEET TO A POINT AND CORNER;

THENCE NORTH 00°01'46" EAST FOR A DISTANCE OF 1.00 FEET THE **POINT OF BEGINNING**.

CONTAINING: 1,058 SQUARE FEET OR 0.024 ACRES OF LAND, MORE OR LESS.

DIVERSIFIED FOOD ROAD 3
PROJECT

Legal Description Parcel 1-1

A certain piece or portion of ground situated in Section 3, Township 7 South, Range 10 East, St. Tammany Parish, Louisiana, commencing at the station 0+07.77 adopted baseline run along the westerly right-of-way of Spice Road north 00 degrees 44 minutes 42 seconds west a distance of 677.48 feet to the POINT OF BEGINNING.

From the POINT OF BEGINNING run north 00 degrees 56 minutes 01 seconds west a distance of 440.93 feet to a point; thence leaving said right-of-way, run south 89 degrees 48 minutes 30 seconds east a distance of 69.28 feet to a point; thence run north 52 degrees 23 minutes 35 seconds east a distance of 154.63 feet to a point; thence run north 89 degrees 56 minutes 41 seconds east a distance of 38.64 feet to a point; thence run south 41 degrees 19 minutes 18 seconds west a distance of 160.89 feet to a point; thence run south 20 degrees 35 minutes 23 seconds west a distance of 271.74 feet to a point; thence run south 07 degrees 38 minutes 31 seconds west a distance of 161.26 feet back to the POINT OF BEGINNING.

Said piece or portion of ground contains 0.68 acres (29,822.80 sq. feet) more or less.

Legal Description Parcel 1-2

A certain piece or portion of ground situated in Section 3, Township 7 South, Range 10 East, St. Tammany Parish, Louisiana, commencing at the station 0+09.84 adopted baseline run along the westerly right-of-way of Spice Road north 00 degrees 44 minutes 42 seconds west a distance of 50.00 feet to the POINT OF BEGINNING.

From the POINT OF BEGINNING run north 89 degrees 15 minutes 18 seconds east a distance of 682.13 feet to a point; thence run south 00 degrees 55 minutes 57 seconds east a distance of 100.00 feet to a point; thence run south 89 degrees 15 minutes 18 seconds west a distance of 682.13 feet to a point; thence run north 00 degrees 56 minutes 01 seconds west a distance of 100.00 feet back to the POINT OF BEGINNING.

Said piece or portion of ground contains 1.57 acres (68,213.20 sq. feet) more or less.

Legal Description Parcel 1-3

A certain piece or portion of ground situated in Section 3, Township 7 South, Range 10 East, St. Tammany Parish, Louisiana, commencing at the station 6+91.89 adopted baseline run north 00 degrees 39 minutes 26 seconds west a distance of 50.00 feet to the POINT OF BEGINNING.

From the POINT OF BEGINNING run north 89 degrees 20 minutes 34 seconds east a distance of 204.87 feet to a point; thence run north 00 degrees 43 minutes 53 seconds west a distance of 1,151.96 feet to a point; thence run north 89 degrees 56 minutes 41 seconds east a distance of 60.00 feet to a point; thence run south 00 degrees 43 minutes 53 seconds east a distance of 1,151.33 feet to a point; thence run north 89 degrees 20 minutes 34 seconds east a distance of 100.00 feet to a point; thence run south 89 degrees 20 minutes 34 seconds west a distance of 589.35 feet back to the POINT OF BEGINNING.

Said piece or portion of ground contains 2.94 acres (128,050.00 sq. feet) more or less.

Legal Description Parcel 1-4

A certain piece or portion of ground situated in Section 3, Township 7 South, Range 10 East, St. Tammany Parish, Louisiana, commencing at the station 12+81.56 adopted baseline run north 00 degrees 38 minutes 20 seconds west a distance of 50.00 feet to the POINT OF BEGINNING.

Exhibit "A" Ordinance Calendar No. _____

From the POINT OF BEGINNING run north 89 degrees 21 minutes 40 seconds east a distance of 306.82 feet to a point; thence run south 00 degrees 44 minutes 42 seconds east a distance of 100.00 feet to a point; thence run south 89 degrees 21 minutes 40 seconds west a distance of 306.81 feet to a point; thence run south 00 degrees 44 minutes 47 seconds west a distance of 100.00 feet back to the POINT OF BEGINNING,

Said piece or portion of ground contains 0.70 acres (30,681.28 sq. feet) more or less.