

ST. TAMMANY PARISH COUNCIL

RESOLUTION

RESOLUTION COUNCIL SERIES NO. C-2396

COUNCIL SPONSOR: BINDER/DAVIS

PROVIDED BY: CAO

RESOLUTION TO CONCUR/NOT CONCUR WITH THE CITY OF COVINGTON ANNEXATION AND REZONING OF .361 ACRES OF LAND, MORE OR LESS, FROM PARISH C-2 HIGHWAY COMMERCIAL DISTRICT TO CITY OF COVINGTON C-3 HIGHWAY COMMERCIAL DISTRICT WHICH PROPERTY IS LOCATED AT 1910 COLLINS BLVD, SECT 45, TOWNSHIP 6 SOUTH, RANGE 11 EAST , WARD 3, DISTRICT 2.

WHEREAS, the City of Covington is contemplating annexation of .361 ACRES acres of land, more or less, owned by James W. & Laura Mooney Holden, and located at 1910 COLLINS BLVD, SECT 45, TOWNSHIP 6 SOUTH, RANGE 11 EAST, Ward 3, District 2 (see attachments for complete description); and

WHEREAS, the proposed annexation **is** consistent with the Annexation Agreement entered into by the City of Covington and St. Tammany Parish effective April 1, 2003; and

WHEREAS, the property requires rezoning from Parish C-2 Highway Commercial District to City of Covington C-3 Highway Commercial District which **is** an intensification of zoning; and

WHEREAS, the property **is not** developed and the proposed annexation **would not** result in a split of the sales tax revenues, *all sales tax revenue accrues to the City of Covington.*

THE PARISH OF ST. TAMMANY HEREBY RESOLVES to **Concur/Not Concur** with the City of Covington annexation and rezoning of .361 acres of land, more or less, located at 1910 COLLINS BLVD, SECT 45, TOWNSHIP 6 SOUTH, RANGE 11 EAST from Parish C-2 Highway Commercial District to City of Covington C-3 Highway Commercial District in accordance with *the April 1, 2003 Annexation Agreement between the Parish and the City of Covington.*

BE IT FURTHER RESOLVED that should this property be annexed, the St. Tammany Parish Council requires that the City of Covington review development proposals utilizing the applicable Parish Drainage Model and compliance with Parish Drainage Regulations.

BE IT FURTHER RESOLVED that the St. Tammany Parish Council requires that the City of Covington require a Traffic Impact Analysis be performed and that the Parish Department of Engineering be consulted on the traffic and access impacts of any proposed development.

THIS RESOLUTION HAVING BEEN SUBMITTED TO A VOTE, THE VOTE THEREON WAS AS FOLLOWS:

MOVED FOR ADOPTION BY _____, SECONDED BY _____

YEAS:

NAYS:

ABSTAIN:

ABSENT:

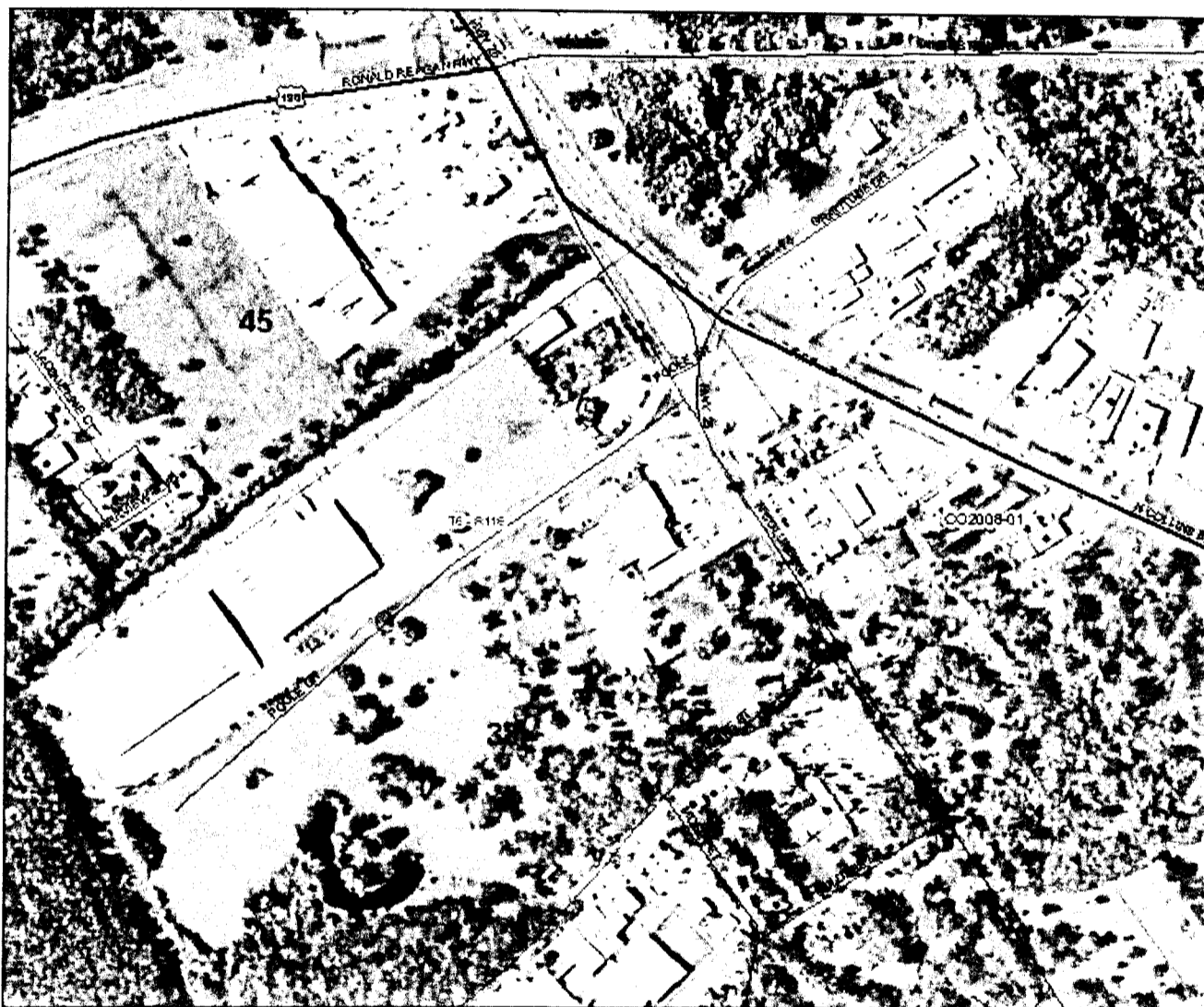
THIS RESOLUTION WAS DECLARED ADOPTED ON THE ____ DAY OF _____, 2008, AT A REGULAR MEETING OF THE PARISH COUNCIL, A QUORUM OF THE MEMBERS BEING PRESENT AND VOTING.

JERRY BINDER, COUNCIL CHAIRMAN

ATTEST:

THERESA L. FORD, CLERK OF COUNCIL (CO2008-01)

000000



St. Tammany Parish

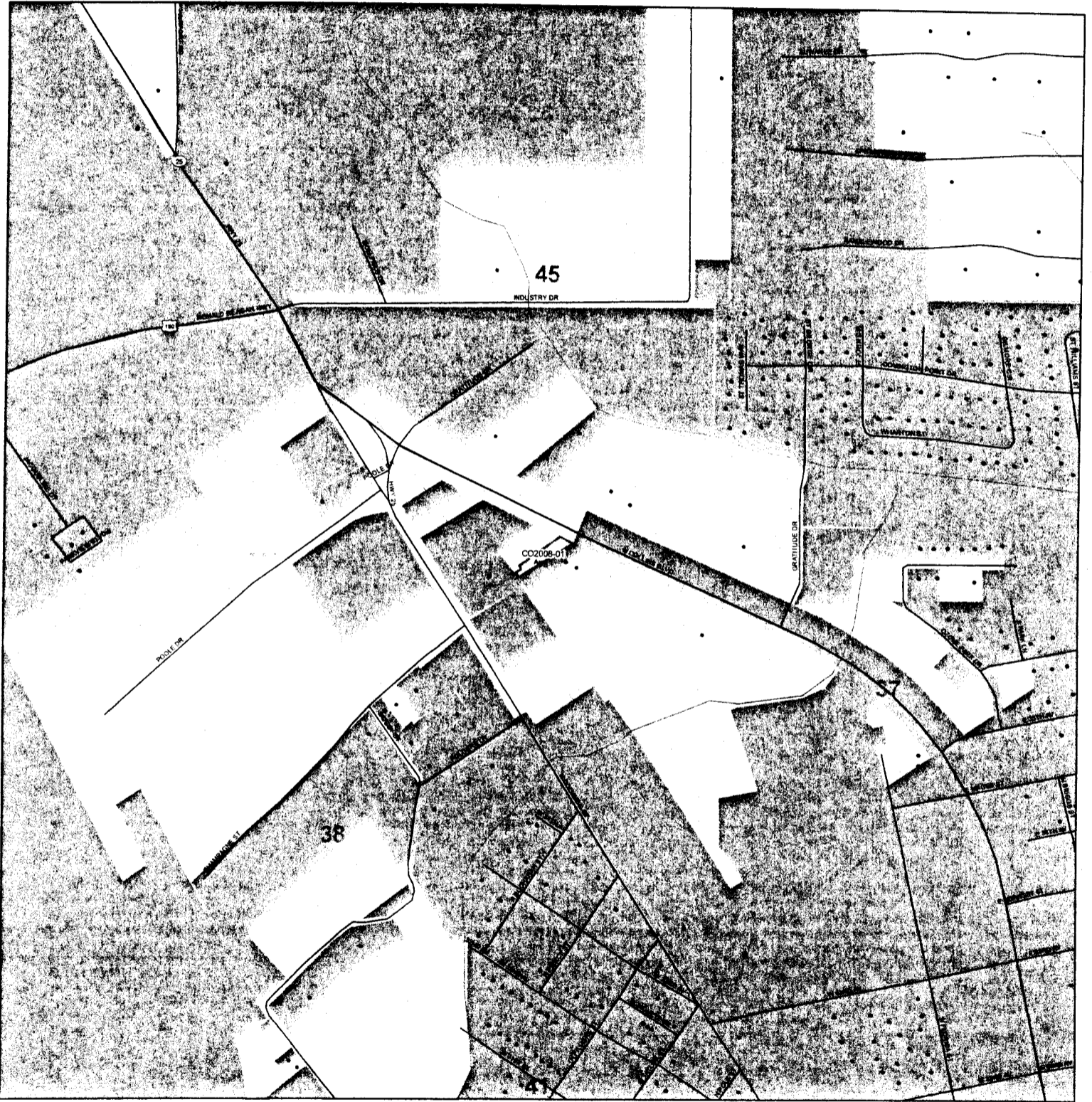


St. Tammany Parish Government
P.O. Box 628
Covington, LA 70434
Kevin C. Davis,
President

Covington Annexation

Legend

- Streets
- Streams
- Major Roads
- ▭ Sections
- ▭ Township/Range
- ▭ CO2008-01



St. Tammany Parish

Covington Annexation Request CO2008-01

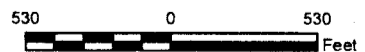


St. Tammany Parish Government
P.O. Box 628
Covington, LA 70434

Kevin C. Davis,
President

Legend

- Streets
- Streams
- Major Roads
- Sections
- Township/Range
- Annexation Area 1
- Annexation Area 3
- Growth Management Area 2
- Municipalities



This map was produced by St. Tammany Parish Information Services. Note: This map is for planning purposes only. It is not a legally recorded plan, survey, official tax map or engineering schematic, and it is not intended to be used as such. Map layers were created from different sources at different scales, and the actual or relative geographic position of any feature is only as accurate as the source information. Copyright (c) 2007 St. Tammany Parish, Louisiana. All rights reserved.