

ST. TAMMANY PARISH COUNCIL

RESOLUTION

RESOLUTION COUNCIL SERIES NO. C-2397

COUNCIL SPONSOR: BINDER/DAVIS PROVIDED BY: CAO

RESOLUTION TO CONCUR/NOT CONCUR WITH THE CITY OF MANDEVILLE ANNEXATION AND REZONING OF 2.084 ACRES ACRES OF LAND, MORE OR LESS, FROM PARISH C-2 HIGHWAY COMMERCIAL DISTRICT TO MANDEVILLE B-2 HIGHWAY BUSINESS DISTRICT WHICH PROPERTY IS LOCATED AT 1150 LOVER'S LANE, SEC 42, T-8-S, R-11-E, ST TAMMANY PARISH, LA., WARD 4, DISTRICT 4.

WHEREAS, the City of Mandeville is contemplating annexation of 2.084 acres of land, more or less, owned by Jeff St Romain, and located at 1150 Lover's Lane, Sec 42, T-8-S, R-11-E St Tammany Parish, LA., Ward 4, District 4 (see attachments for complete description); and

WHEREAS, the proposed annexation is consistent with the Annexation Agreement entered into by the City of Mandeville and St. Tammany Parish effective April 1, 2003; and

WHEREAS, the property requires rezoning from Parish C-2 Highway Commercial District to Mandeville B-2 Highway Business District District which is not an intensification of zoning; and

WHEREAS, the property is developed and the proposed annexation would not result in a split of the sales tax revenues, all sales tax revenue accrues to the City of Mandeville.

THE PARISH OF ST. TAMMANY HEREBY RESOLVES to Concur/Not Concur with the City of Mandeville annexation and rezoning of 2.084 acres of land, more or less, located at 1150 Lover's Lane, Sec 42, T-8-S, R-11-E, St Tammany Parish, LA. from Parish C-2 Highway Commercial District to Mandeville B-2 Highway Business District in accordance with the April 1, 2003 Annexation Agreement between the Parish and the City of Mandeville.

BE IT FURTHER RESOLVED that should this property be annexed, the St. Tammany Parish Council requires that the City of Mandeville review any re-development proposals utilizing the applicable Parish Drainage Model and compliance with Parish Drainage Regulations.

BE IT FURTHER RESOLVED that the St. Tammany Parish Council requires that the City of Mandeville require a Traffic Impact Analysis be performed and that the Parish Department of Engineering be consulted on the traffic and access impacts of any proposed re-development.

THIS RESOLUTION HAVING BEEN SUBMITTED TO A VOTE, THE VOTE THEREON WAS AS FOLLOWS:

MOVED FOR ADOPTION BY \_\_\_\_\_, SECONDED BY \_\_\_\_\_

YEAS:

NAYS:

ABSTAIN:

ABSENT:

THIS RESOLUTION WAS DECLARED ADOPTED ON THE \_\_\_ DAY OF \_\_\_\_\_, 2008, AT A REGULAR MEETING OF THE PARISH COUNCIL, A QUORUM OF THE MEMBERS BEING PRESENT AND VOTING.

\_\_\_\_\_  
JERRY BINDER, COUNCIL CHAIRMAN

ATTEST:

\_\_\_\_\_  
THERESA L. FORD, CLERK OF COUNCIL (MN2008-01)



St. Tammany Parish



St. Tammany Parish Government  
 P. O. Box 609  
 Covington, LA 70434

Kevin C. Daws,  
 President

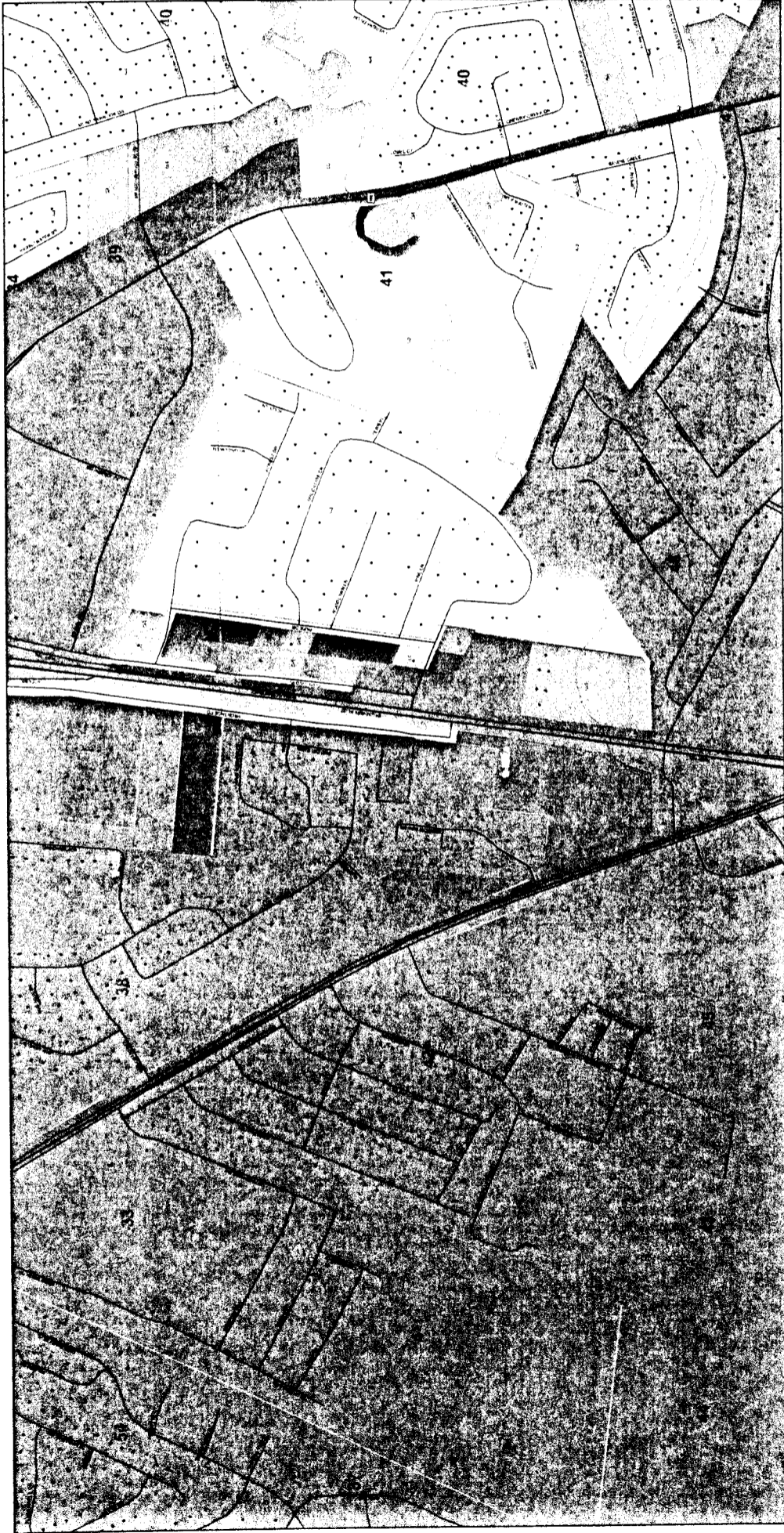
## Mandeville Annexation Request

### Legend

- Streets
- Streams
- Major Roads
- Sections
- Township/Range
- Municipalities



This map was produced by St. Tammany Parish Information Services.  
 Note: This map is for planning purposes only. It is not a legally recorded plan, survey, official tax map or engineering schematic, and it is not intended to be used as such.  
 Map layers were created from different sources at different scales, and the location of any feature is only as accurate as the source information.  
 Copyright (c) 2007, St. Tammany Parish, Louisiana. All rights reserved.



# Mandeville Annexation Request

St. Tammany Parish

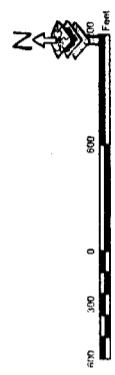


St. Tammany Parish Government  
 P.O. Box 628  
 Covington, LA 70434

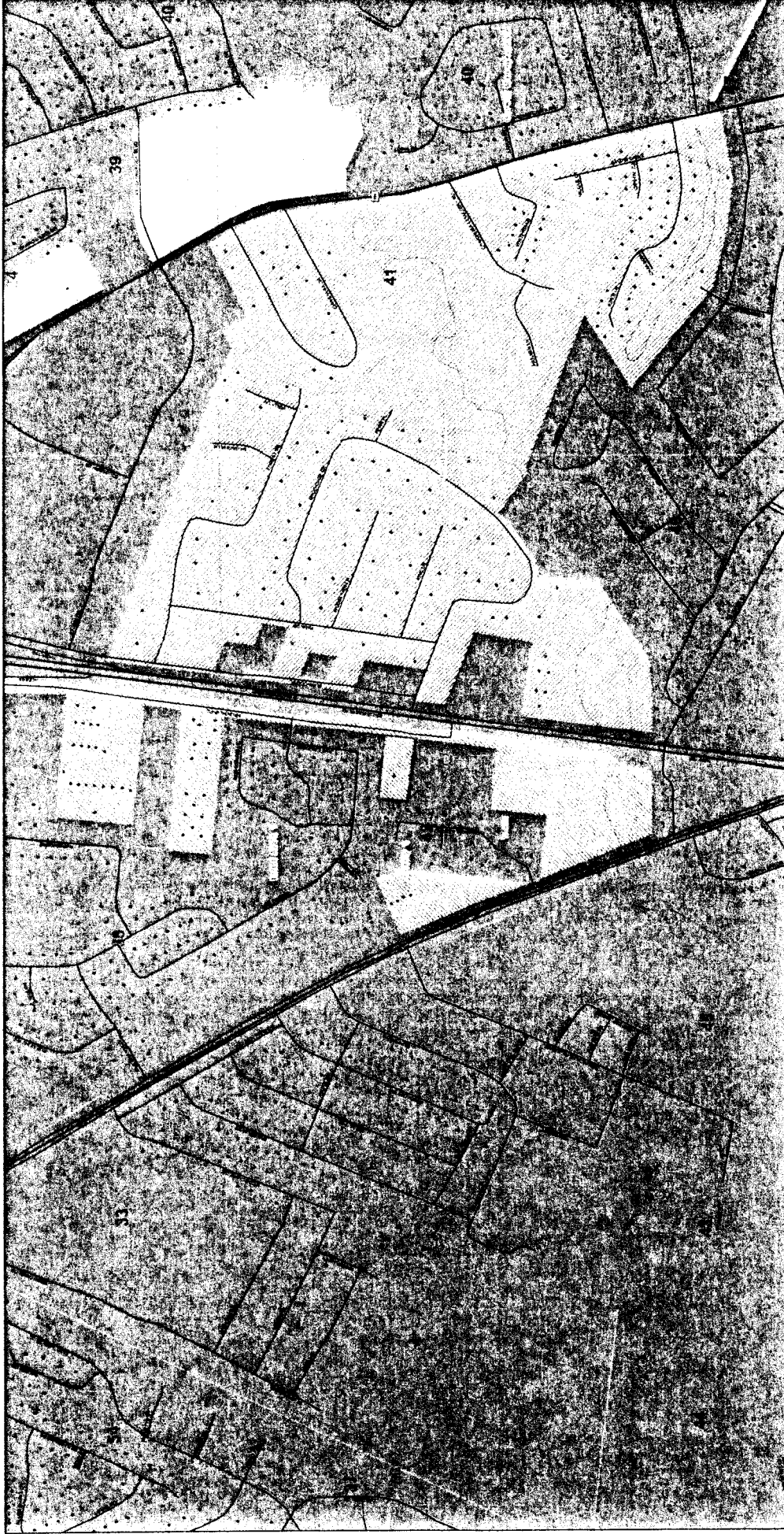
Kevin C. Davis,  
 President

### Legend

- Streets
- Streams
- Major Roads
- Sections
- Township/Range
- MN2008-01
- Municipalities
- Zoning Classifications
- Rural
- SA Suburban Agriculture
- A-1 Suburban
- A-2 Suburban
- A-3 Suburban
- A-4 Single Family Residential
- MH Mobile Home
- A-5 Two Family Residential
- A-6 General Multiple Family
- SD Special District
- RC Recreation/Conservation
- ID Institutional
- PUD Planned Unit Development
- LC Light Commercial
- C-1 Neighborhood Commercial
- C-2 Highway Commercial
- C-3 Planned Commercial
- M-1 Light Industrial
- M-2 Intermediate Industrial
- M-3 Heavy Industrial



This map was produced by St. Tammany Parish Information Services. Note: This map is for planning purposes only. It is not a legally recorded plan survey, official site map or engineering schematic, and it is not intended to be used for such purposes. Map layers were created from different sources at different scales, and the actual or relative geographic position of any feature is only as accurate as the source information. Copyright (c) 2007, St. Tammany Parish, Louisiana. All rights reserved.



St. Tammany Parish



St. Tammany Parish Government  
 P.O. Box 628  
 Covington, LA 70434

Kevin C. Davis,  
 President

## Mandeville Annexation Request

**Legend**

- Streets
- Streams
- Major Roads
- Sections
- Township/Range
- MN2008-01
- Municipalities

**Mandeville Urban Growth Areas**

TAX TYPE	Symbol
Initial Area 1	[Hatched Box]
Initial Area 2	[Dotted Box]
Priority 1	[White Box]
Priority 2	[Light Gray Box]
Growth Management	[Dark Gray Box]



This map was produced by St. Tammany Parish Information Services.  
 Note: This map is for planning purposes only. It is not a legally recorded plan, survey, official tax map or engineering schematic, and it is not intended to be used as such.  
 Map layers were created from different sources at different scales, and the actual or relative geographic position of any feature is only approximate.  
 Copyright (c) 2007, St. Tammany Parish, Louisiana. All rights reserved.

*City of Mandeville  
Planning and Zoning Commission*

LEONARD ROHRBOUGH, CHAIRMAN  
PLANNING COMMISSION

NIXON ADAMS, CHAIRMAN  
ZONING BOARD

LOUISETTE L. KIDD, DIRECTOR  
DEPT. OF PLANNING & DEVELOPMENT



May 6, 2008

RECEIVED

MAY 08 2008

2:05 PM RKT

MEMBERS

JOHN MOORE  
DENNIS THOMAS  
LARRY RASE  
MICHAEL BLACHE  
REN CLARK

CERTIFIED MAIL  
RETURN RECEIPT REQUESTED

Councilman R. Reid Falconer  
St. Tammany Parish Council  
P.O. Box 628  
Covington, LA 70434

RE: Annexation Request

Dear Councilman Falconer:

Under the provisions of the City of Mandeville's Annexation/Growth Plan adopted by St. Tammany Parish in March, 2003, attached please find a copy of Ordinance 08-13 requesting the annexation of a portion of ground containing approximately 2.084 acres of land in Section 42, and assigning a zoning designation as a B-2, Highway Business District zoning designation. Ordinance 08-13 is scheduled to be introduced at the City Council meeting of May 8, 2008. The Planning and Zoning Commission has scheduled the ordinance to be included on their agenda for the May 13 and 27, 2008 meetings. At that time, it is anticipated that the ordinance will be placed on the City Council agenda of June 12, 2008, for adoption.

If you have any questions, please call me.

Sincerely,

Lori H. Spranley  
Planning Secretary

attachment

cc: Sidney Fontenot

---

April 23, 2008

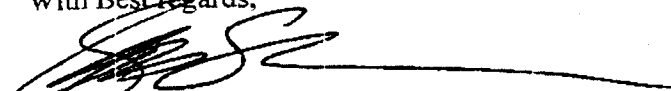
Mr. Edward J. Price III -- Mayor  
City of Mandeville  
3101 East Causeway Approach  
Mandeville, La. 70448

Dear Mayor Price,

This letter serves as a formal request to annex 2.084 acres located at 1150 Lover's Lane into the City of Mandeville. The legal description of the property is Sec. 42, T8S-R11E, St. Tammany Parish, La. The subject property is currently surrounded by City property.

Thank you for your consideration with this matter and I look forward to hearing from you soon.

With Best regards,

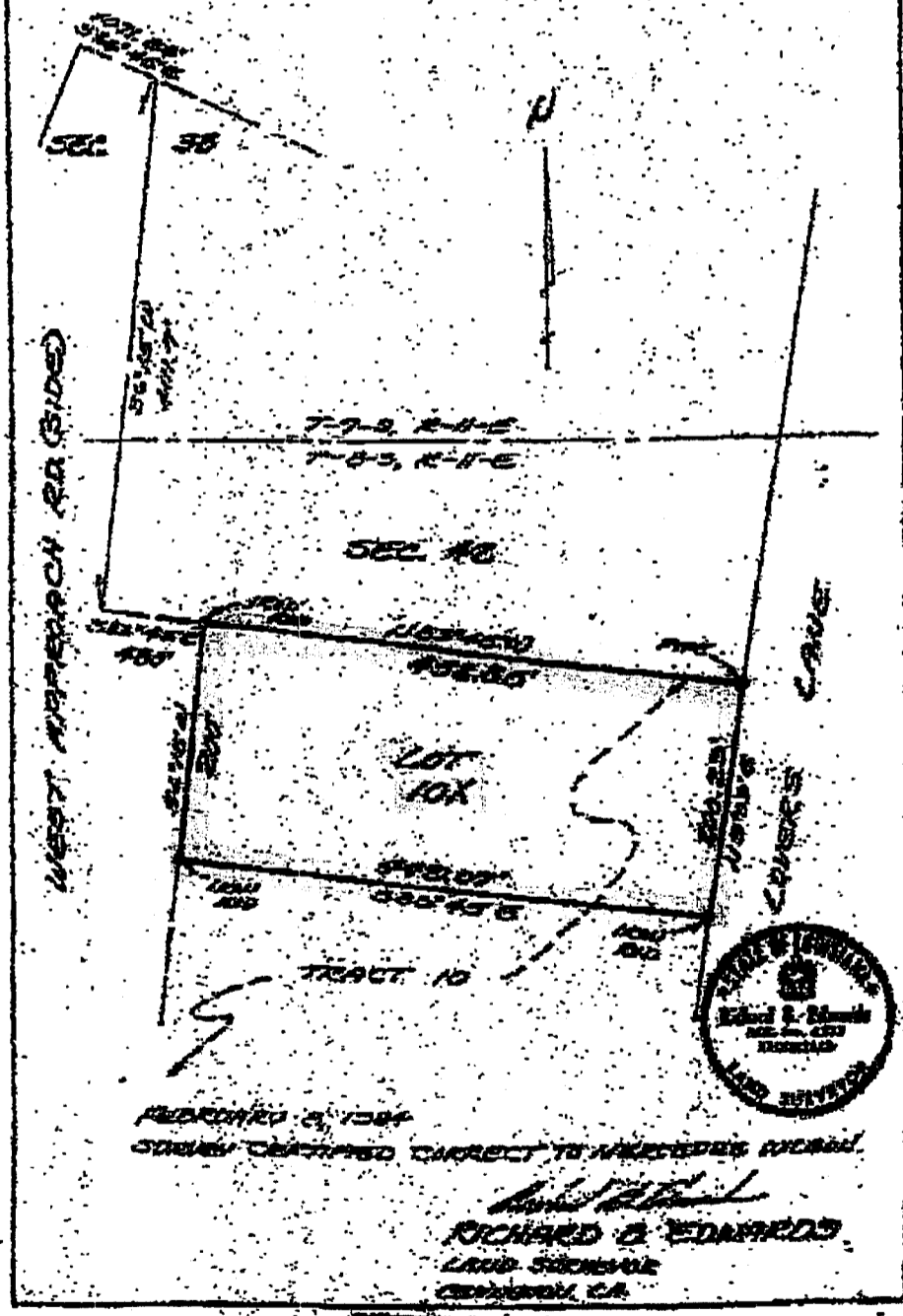


Jeff St. Romain

711

PARTIAL OF TRACT 10 OF SEC. 12  
T-8-S, R-11-E  
ST. TAMMADY PARISH, LA.

Reference point is Northwest corner of Section 38



1150 NORTH CAUSEWAY  
(LOVERS LANE)

85