

ST. TAMMANY PARISH COUNCIL

ORDINANCE

ORDINANCE CALENDAR NO. 3796

ORDINANCE COUNCIL SERIES NO.

COUNCIL SPONSOR: BINDER/DAVIS

PROVIDED BY: PRESIDENT/ LEGAL

INTRODUCED BY: MR. GOULD

SECONDED BY: MR. STEFANCIK

ON THE 3RD DAY OF APRIL, 2008

ORDINANCE TO AUTHORIZE THE PARISH OF ST. TAMMANY, THROUGH THE OFFICE OF THE PARISH PRESIDENT, TO PURCHASE, EXPROPRIATE OR OTHERWISE ACQUIRE ALL CERTAIN PARCELS AND/OR RIGHTS OF WAY FOR THE HIGHWAY 1077 AND 1085 INTERSECTION PROJECT, ST. TAMMANY PARISH, LOUISIANA (DESCRIBED IN EXHIBIT "A" ATTACHED HERETO)

WHEREAS, the Parish of St. Tammany desires to acquire certain immovable property (hereinafter referred to as "Property"), and

WHEREAS, there is a need and a public purpose for the acquisition of certain immovable property for the Highway 1077 and 1085 Intersection Project; and

WHEREAS, the Parish of St. Tammany hereby desires to acquire the Property and/or rights of way and authorizes the Office of the Parish President to do whatever is necessary to enter into negotiations and acquire said Property and/or rights of way.

THE PARISH OF ST. TAMMANY HEREBY ORDAINS to authorize the Parish of St. Tammany to acquire all that certain parcel of ground described in Exhibit "A" attached hereto; and

That pursuant to all applicable provisions of law, the Office of the Parish President is directed and authorized to do whatever is necessary to acquire the Property and/or rights of way; and

That the Office of the Parish President is authorized and instructed to proceed with the acquisition of the Property and/or rights of way in a timely and orderly matter; and

That the Office of the Parish President is authorized to exercise its discretion in acquiring the Property and/or rights of way, together with all agreements and all transactions necessary to carry out the intent of this Ordinance; and

That, if purchased, the purchase price shall not exceed the fair market value of the Property as evidenced by an appraisal obtained or supplied to the Parish plus fees and costs; and

That any and all actions previously taken by the Office of the Parish President in furtherance of the actions contemplated herein are ratified and accepted accordingly.

REPEAL: All Ordinances or parts of Ordinances in conflict herewith are hereby repealed.

SEVERABILITY: If any provision of this Ordinance shall be held to be invalid, such invalidity shall not affect other provisions herein which can be given effect without the invalid provision and to this end the provisions of this Ordinance are hereby declared to be severable.

EFFECTIVE DATE: This Ordinance shall become effective immediately or as per law, which ever is earlier.

MOVED FOR ADOPTION BY: _____, SECONDED BY: _____

WHEREUPON THIS ORDINANCE WAS SUBMITTED TO A VOTE AND RESULTED IN THE FOLLOWING:

YEAS:

NAYS:

ABSTAIN:

ABSENT:

THIS ORDINANCE WAS DECLARED ADOPTED AT A REGULAR MEETING OF THE PARISH COUNCIL ON THE _____ DAY OF _____ 2008; AND BECOMES ORDINANCE COUNCIL SERIES NO. 08-

JERRY BINDER, COUNCIL CHAIRMAN

ATTEST:

DIANE HUESCHEN, COUNCIL CLERK

KEVIN DAVIS, PARISH PRESIDENT

Published introduction: MARCH 27, 2008
Published adoption on: _____, 2008

Delivered to Parish President: _____, 2008 @ _____
Returned to Council Clerk: _____, 2008 @ _____

INTER OFFICE



Kevin Davis
Parish President

MEMORANDUM

**ST. TAMMANY PARISH GOVERNMENT
LEGAL DEPARTMENT**

Date: April 1, 2008

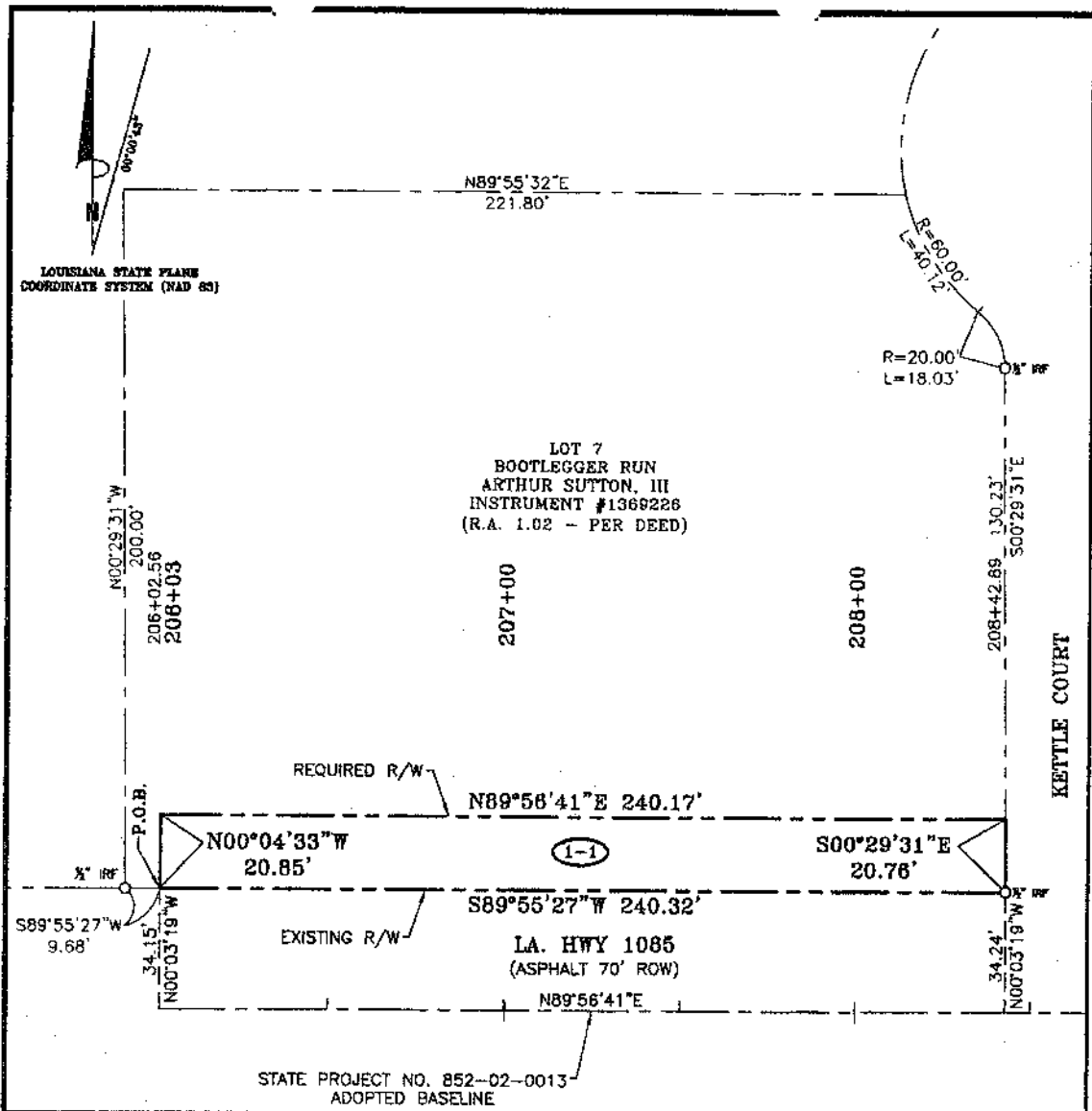
To: Theresa
Council

From: Marlyn
Legal

Re: Legal Descriptions - Highway 1077/1085 Intersection

I have attached the legal descriptions on the above project.

Attachments



LEGAL DESCRIPTION

A CERTAIN PIECE OR PORTION OF GROUND SITUATED IN SECTION 3, TOWNSHIP 7 SOUTH, RANGE 10 EAST, ST. TAMMANY PARISH, LOUISIANA, COMMENCING AT THE STATION 206+02.56 FROM STATE PROJECT NO. 852-02-0013 ADOPTED BASELINE RUN NORTH 00 DEGREES 03 MINUTES 19 SECONDS WEST A DISTANCE OF 34.15 FEET TO A POINT ON THE NORTHERLY RIGHT-OF-WAY LINE OF LA. HWY. 1085 AND THE POINT OF BEGINNING.

FROM THE POINT OF BEGINNING AND LEAVING SAID RIGHT-OF-WAY, RUN NORTH 00 DEGREES 04 MINUTES 33 SECONDS WEST A DISTANCE OF 20.85 FEET TO A POINT; THENCE RUN NORTH 89 DEGREES 58 MINUTES 41 SECONDS EAST A DISTANCE OF 240.17 FEET TO A POINT ON THE WESTERLY RIGHT-OF-WAY OF KETTLE COURT; THENCE RUN ALONG SAID KETTLE COURT SOUTH 00 DEGREES 29 MINUTES 31 SECONDS EAST A DISTANCE OF 20.76 FEET TO A POINT ON THE NORTHERLY RIGHT-OF-WAY OF LA. HWY. 1085; THENCE RUN ALONG SAID RIGHT-OF-WAY LINE SOUTH 89 DEGREES 55 MINUTES 27 SECONDS WEST A DISTANCE OF 240.32 FEET BACK TO THE POINT OF BEGINNING.

SAID PIECE OR PORTION OF GROUND CONTAINS 0.11 ACRES (4,998.68 SQ. FT.) MORE OR LESS.

DETAIL MAP OF STATE PROJECT NO. 852-02-0013
 0.11 ACRES (4,998.68 SQ. FT.)
 STATION 206+02.56 TO 208+42.89
 ALONG LA. HWY. 1085 NORTH RIGHT-OF-WAY LINE
 in
 St. Tammany Parish, Louisiana
 for
ST. TAMMANY PARISH ROADWAY IMPROVEMENTS

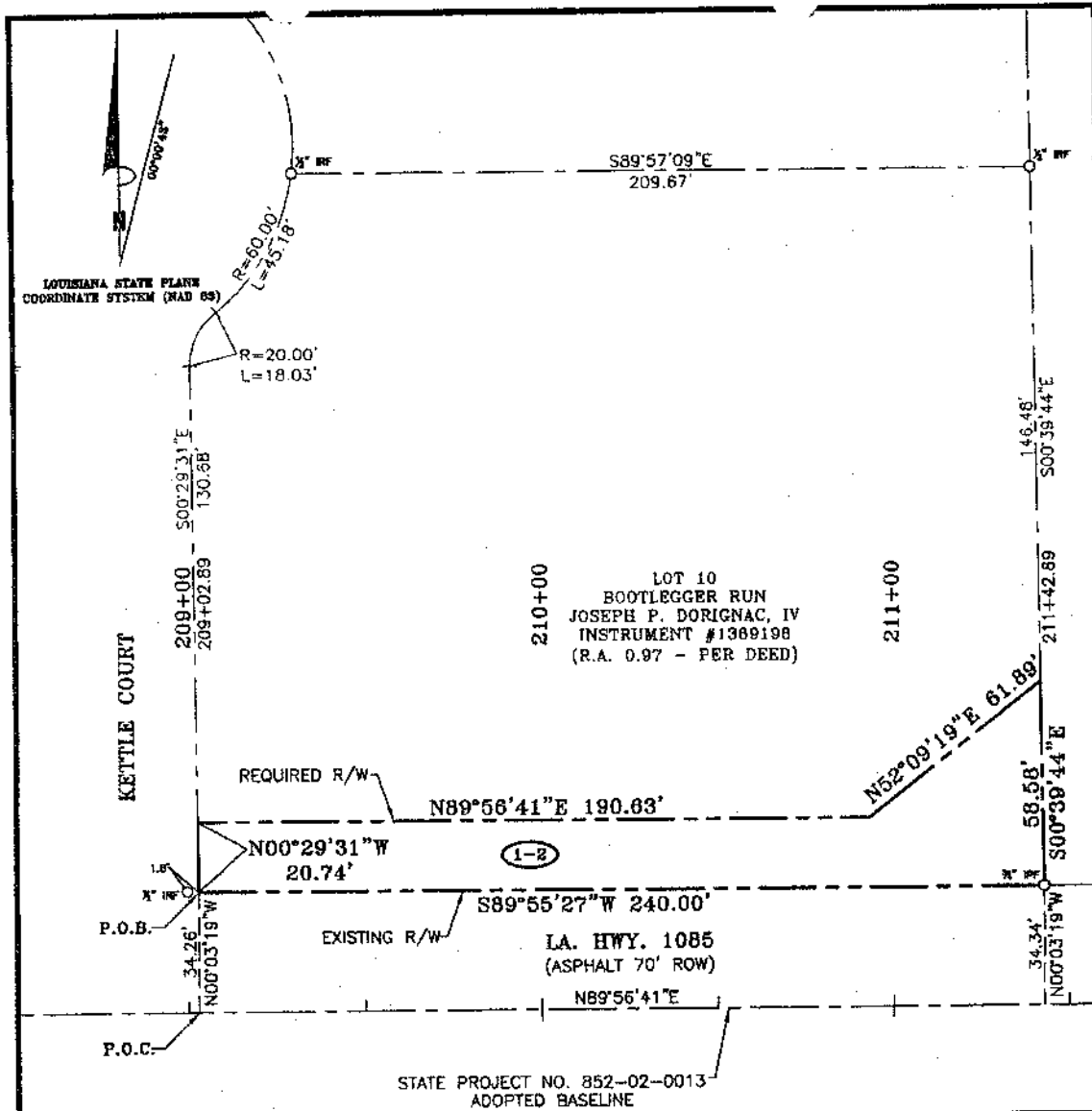
Survey No. 2005392 NORTH_001 Drawn by: SPH Scale: 1" = 40'
 Date: DECEMBER, 2007 Revised:

This Survey is Certified True and Correct By

JOHN E. BONNEAU & ASSOCIATES, INC.
 Professional Land Surveyors • Planners and Consultants

420 HWY. 1085, EXIT #57 • MADISONVILLE, LA. 70447
 (985)845-1012 • (985)845-1013 • (985)845-1351 • FAX NO. (985)845-1778
 www.JEBCOLandSurveying.com • e-mail: jebco1@bellsouth.net

John E. Bonneau
 Professional Land Surveyor
 Registration No. 4423



LEGAL DESCRIPTION

A CERTAIN PIECE OR PORTION OF GROUND SITUATED IN SECTION 3, TOWNSHIP 7 SOUTH, RANGE 10 EAST, ST. TAMMANY PARISH, LOUISIANA, COMMENCING AT THE STATION 209+02.89 FROM STATE PROJECT NO. 852-02-0013 ADOPTED BASELINE RUN NORTH 00 DEGREES 03 MINUTES 19 SECONDS WEST A DISTANCE OF 34.26 FEET TO A POINT ON THE NORTHERLY RIGHT-OF-WAY LINE OF LA. HWY. 1085 AND THE POINT OF BEGINNING.

FROM THE POINT OF BEGINNING AND LEAVING SAID RIGHT-OF-WAY, RUN NORTH 00 DEGREES 29 MINUTES 31 SECONDS WEST A DISTANCE OF 20.74 FEET TO A POINT; THENCE RUN NORTH 89 DEGREES 56 MINUTES 41 SECONDS EAST A DISTANCE OF 190.63 FEET TO A POINT; THENCE RUN NORTH 52 DEGREES 09 MINUTES 19 SECONDS EAST A DISTANCE OF 61.89 FEET TO A POINT; THENCE RUN SOUTH 00 DEGREES 39 MINUTES 44 SECONDS EAST A DISTANCE OF 58.58 FEET TO A POINT ON THE NORTHERLY RIGHT-OF-WAY OF LA. HWY. 1085; THENCE RUN ALONG SAID RIGHT-OF-WAY SOUTH 89 DEGREES 55 MINUTES 27 SECONDS WEST A DISTANCE OF 240.00 FEET BACK TO THE POINT OF BEGINNING.

SAID PIECE OR PORTION OF GROUND CONTAINS 0.14 ACRES (5,902.08 SQ. FT.) MORE OR LESS.

DETAIL MAP OF STATE PROJECT NO. 852-02-0013
0.14 ACRES (5,902.08 SQ. FT.)
STATION 209+02.89 TO 211+42.89
ALONG LA. HWY. 1085 NORTH RIGHT-OF-WAY LINE
in
St. Tammany Parish, Louisiana
for
ST. TAMMANY PARISH ROADWAY IMPROVEMENTS

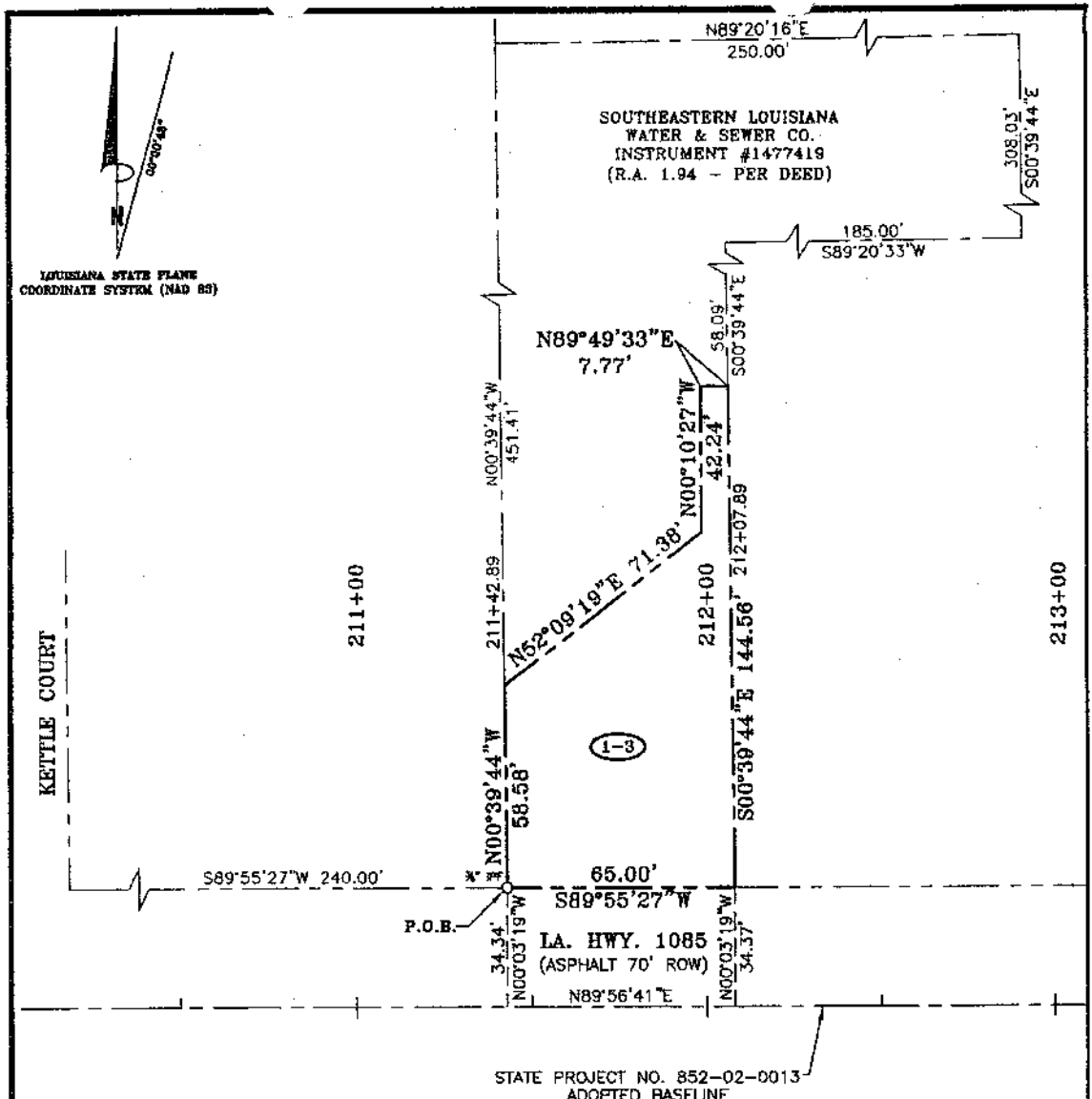
Survey No. 2005392 NORTH_002 Drawn by: SPH Scale: 1" = 40'
Date: DECEMBER, 2007 Revised:

This Survey is Certified True and Correct By

JOHN E. BONNEAU & ASSOCIATES, INC.
Professional Land Surveyors • Planners and Consultants

420 HWY. 1085, EXIT #57 • MADISONVILLE, LA. 70447
(985)845-1012 • (985)845-1013 • (985)845-1351 • FAX NO. (985)845-1778
www.JEBCOLandSurveying.com • e-mail: jebca1@bellsouth.net

John E. Bonneau
Professional Land Surveyor
Registration No. 4423



LEGAL DESCRIPTION

A CERTAIN PIECE OR PORTION OF GROUND SITUATED IN SECTION 3, TOWNSHIP 7 SOUTH, RANGE 10 EAST, ST. TAMMANY PARISH, LOUISIANA, COMMENCING AT THE STATION 211+42.89 FROM STATE PROJECT NO. 852-02-0013 ADOPTED BASELINE RUN NORTH 00 DEGREES 03 MINUTES 19 SECONDS WEST A DISTANCE OF 34.34 FEET TO A POINT ON THE NORTHERLY RIGHT-OF-WAY LINE OF LA. HWY. 1085 AND THE POINT OF BEGINNING.

FROM THE POINT OF BEGINNING AND LEAVING SAID RIGHT-OF-WAY, RUN NORTH 00 DEGREES 39 MINUTES 44 SECONDS WEST A DISTANCE OF 58.58 FEET TO A POINT; THENCE RUN NORTH 52 DEGREES 09 MINUTES 19 SECONDS EAST A DISTANCE OF 71.38 FEET TO A POINT; THENCE RUN NORTH 00 DEGREES 10 MINUTES 27 SECONDS WEST A DISTANCE OF 42.24 FEET TO A POINT; THENCE RUN NORTH 89 DEGREES 49 MINUTES 33 SECONDS EAST A DISTANCE OF 7.77 FEET TO A POINT; THENCE RUN SOUTH 00 DEGREES 39 MINUTES 44 SECONDS EAST A DISTANCE OF 144.56 FEET BACK TO THE POINT OF BEGINNING.

SAID PIECE OR PORTION OF GROUND CONTAINS 0.13 ACRES (5,741.96 SQ. FT.) MORE OR LESS.

DETAIL MAP OF STATE PROJECT NO. 852-02-0013
0.13 ACRES (5,741.96 SQ. FT.)
 STATION 211+42.89 TO 212+07.89
 ALONG LA. HWY. 1085 NORTH RIGHT-OF-WAY LINE
 in
 St. Tammany Parish, Louisiana
 for
ST. TAMMANY PARISH ROADWAY IMPROVEMENTS

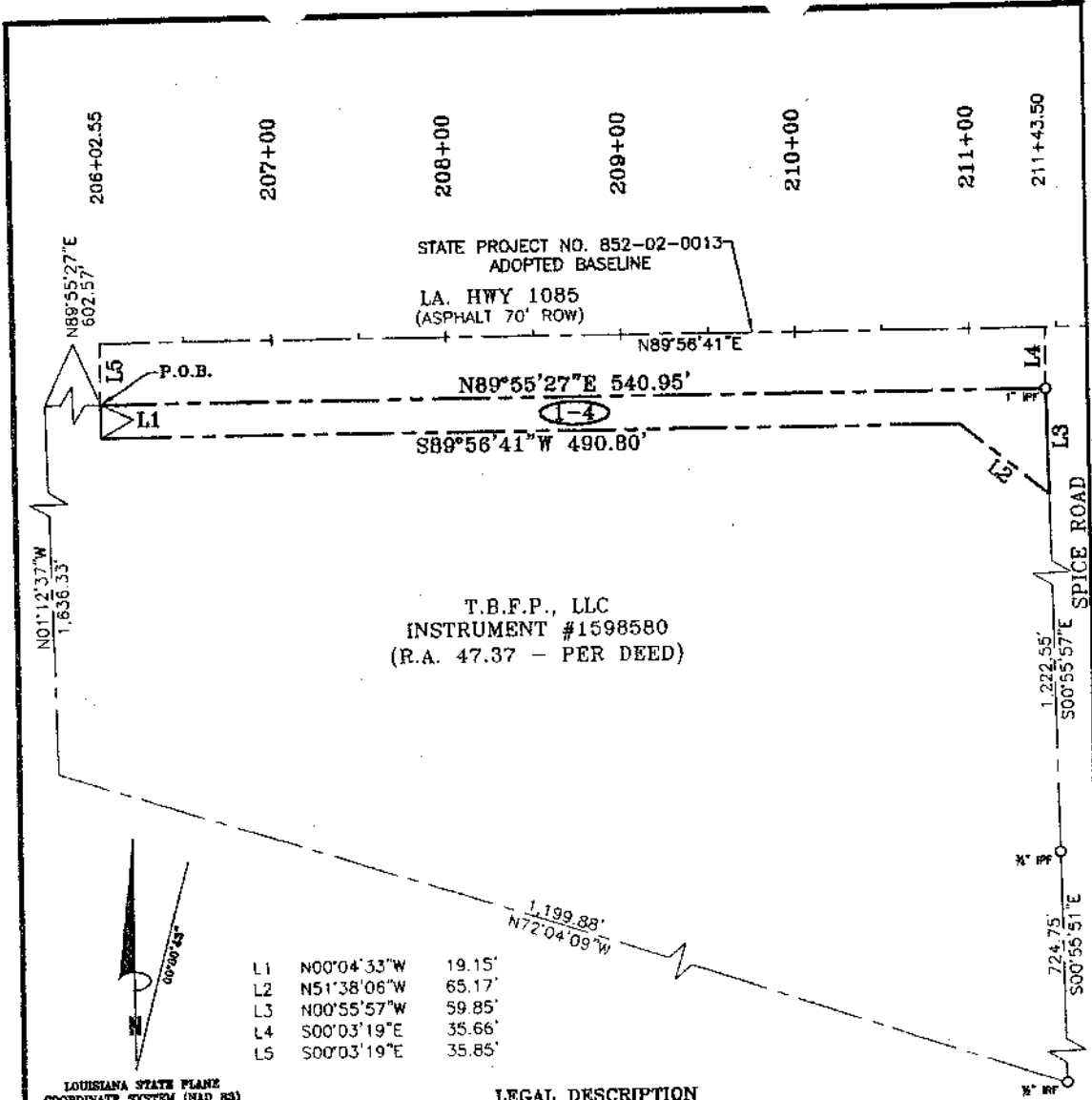
Survey No. 2005392 NORTH_003 Drawn by: SPH Scale: 1" = 40'
 Date: DECEMBER, 2007 Revised:

This Survey is Certified True and Correct By

JOHN E. BONNEAU & ASSOCIATES, INC.
 Professional Land Surveyors • Planners and Consultants
 420 HWY. 1085, EXIT #57 • MADISONVILLE, LA. 70447
 (985)845-1012 • (985)845-1013 • (985)845-1351 • FAX NO. (985)845-1778
 www.JEBCOLandSurveying.com • e-mail: jebca1@bellsouth.net

John E. Bonneau
 Professional Land Surveyor
 Registration No. 4423

1-4



T.B.F.P., LLC
INSTRUMENT #1598580
(R.A. 47.37 - PER DEED)

L1	N00°04'33\"W	19.15'
L2	N51°38'06\"W	65.17'
L3	N00°55'57\"W	59.85'
L4	S00°03'19\"E	35.66'
L5	S00°03'19\"E	35.85'

LOUISIANA STATE PLANE
COORDINATE SYSTEM (NAD 83)

LEGAL DESCRIPTION

A CERTAIN PIECE OR PORTION OF GROUND SITUATED IN SECTION 3, TOWNSHIP 7 SOUTH, RANGE 10 EAST, ST. TAMMANY PARISH, LOUISIANA, COMMENCING AT THE STATION 206+02.55 FROM STATE PROJECT NO. 852-02-0013 ADOPTED BASELINE RUN SOUTH 00 DEGREES 03 MINUTES 19 SECONDS EAST A DISTANCE OF 35.85 FEET TO A POINT ON THE SOUTHERLY RIGHT-OF-WAY LINE OF LA. HWY. 1085 AND THE POINT OF BEGINNING.

FROM THE POINT OF BEGINNING, RUN NORTH 89 DEGREES 55 MINUTES 27 SECONDS EAST A DISTANCE OF 540.95 FEET TO A POINT ON THE WESTERLY RIGHT-OF-WAY OF SPICE ROAD; THENCE RUN ALONG SAID RIGHT-OF-WAY SOUTH 00 DEGREES 55 MINUTES 57 SECONDS EAST A DISTANCE OF 59.85 FEET TO A POINT; THENCE LEAVING SAID RIGHT-OF-WAY, RUN NORTH 51 DEGREES 38 MINUTES 06 SECONDS WEST A DISTANCE OF 65.17 FEET TO A POINT; THENCE RUN SOUTH 89 DEGREES 56 MINUTES 41 SECONDS WEST A DISTANCE OF 490.80 FEET TO A POINT; THENCE RUN NORTH 00 DEGREES 04 MINUTES 33 SECONDS WEST A DISTANCE OF 19.15 FEET BACK TO THE POINT OF BEGINNING.

SAID PIECE OR PORTION OF GROUND CONTAINS 0.26 ACRES (11,435.99 SQ. FT.) MORE OR LESS.

DETAIL MAP OF STATE PROJECT NO. 852-02-0013
0.26 ACRES (11,435.99 SQ. FT.)
STATION 206+02.55 TO 211+43.50
ALONG LA. HWY. 1085 SOUTH RIGHT-OF-WAY LINE
St. Tammany Parish, Louisiana
for
ST. TAMMANY PARISH ROADWAY IMPROVEMENTS

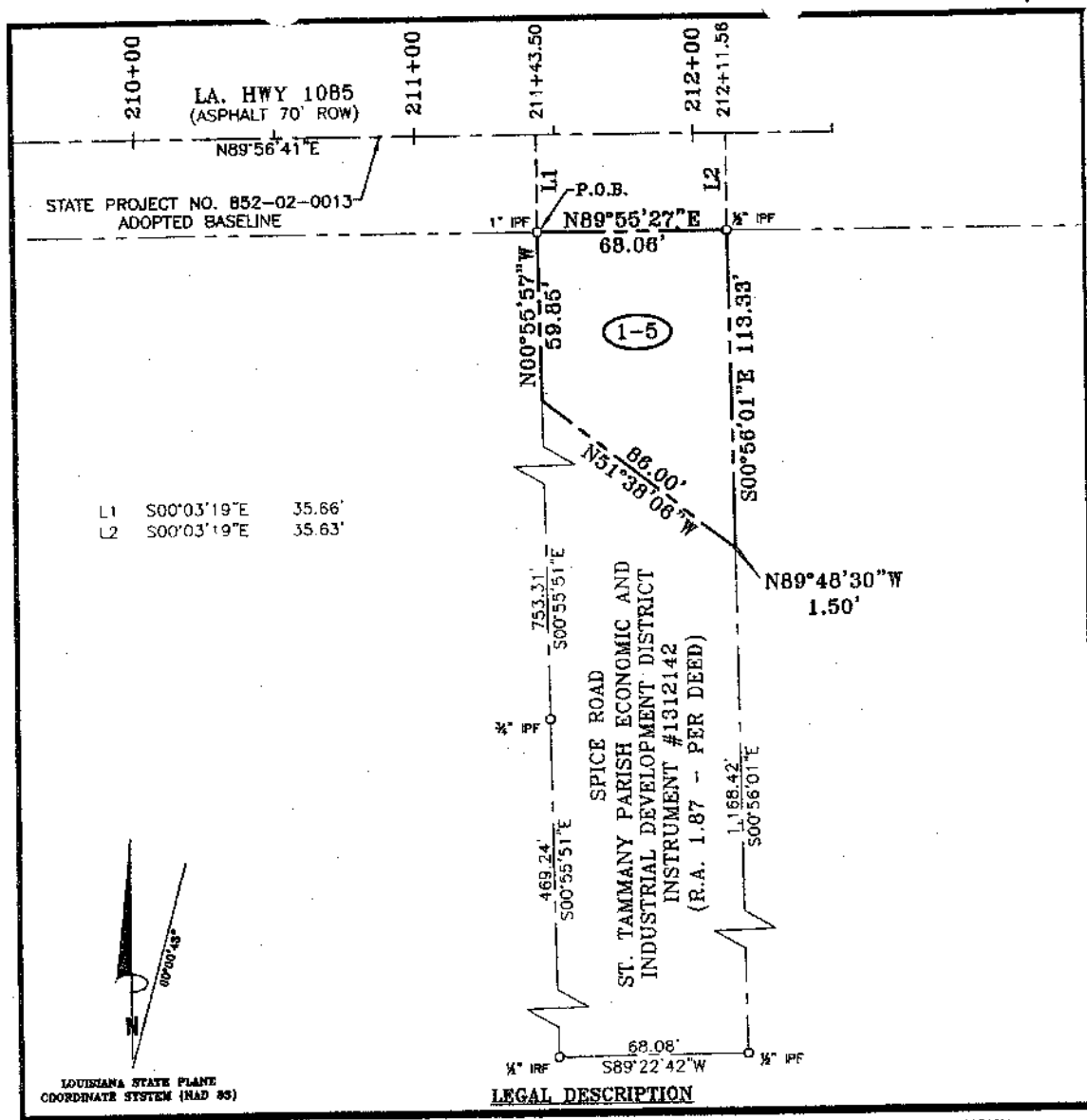
Survey No. 2005392 SOUTH_001 Drawn by: SPH Scale: 1" = 80'
Date: DECEMBER, 2007 Revised:

This Survey is Certified True and Correct By

JOHN E. BONNEAU & ASSOCIATES, INC.
Professional Land Surveyors • Planners and Consultants
420 HWY. 1085, EXIT #57 • MADISONVILLE, LA. 70447
(985)845-1012 • (985)845-1013 • (985)845-1351 • FAX NO. (985)845-1778
www.JEBCOLandSurveying.com • e-mail: jebco1@bellsouth.net

John E. Bonneau
Professional Land Surveyor
Registration No. 4423

1-5



L1 S00°03'19"E 35.66'
L2 S00°03'19"E 35.63'

LOUISIANA STATE PLANE
COORDINATE SYSTEM (NAD 83)

LEGAL DESCRIPTION

A CERTAIN PIECE OR PORTION OF GROUND SITUATED IN SECTION 3, TOWNSHIP 7 SOUTH, RANGE 10 EAST, ST. TAMMANY PARISH, LOUISIANA, COMMENCING AT THE STATION 211+43.50 FROM STATE PROJECT NO. 852-02-0013 ADOPTED BASELINE RUN SOUTH 00 DEGREES 03 MINUTES 19 SECONDS EAST A DISTANCE OF 35.66 FEET TO A POINT ON THE SOUTHERLY RIGHT-OF-WAY LINE OF LA. HWY. 1085 AND THE POINT OF BEGINNING.

FROM THE POINT OF BEGINNING, RUN NORTH 89 DEGREES 55 MINUTES 27 SECONDS EAST A DISTANCE OF 68.06 FEET TO A POINT; THENCE RUN SOUTH 00 DEGREES 56 MINUTES 01 SECONDS EAST A DISTANCE OF 113.33 FEET TO A POINT; THENCE RUN NORTH 89 DEGREES 48 MINUTES 30 SECONDS WEST A DISTANCE OF 1.50 FEET TO A POINT; THENCE RUN NORTH 51 DEGREES 38 MINUTES 06 SECONDS WEST A DISTANCE OF 86.00 FEET TO A POINT; THENCE RUN NORTH 00 DEGREES 55 MINUTES 57 SECONDS WEST A DISTANCE OF 59.85 FEET BACK TO THE POINT OF BEGINNING.

SAID PIECE OR PORTION OF GROUND CONTAINS 0.14 ACRES (5,931.97 SQ. FT.) MORE OR LESS.

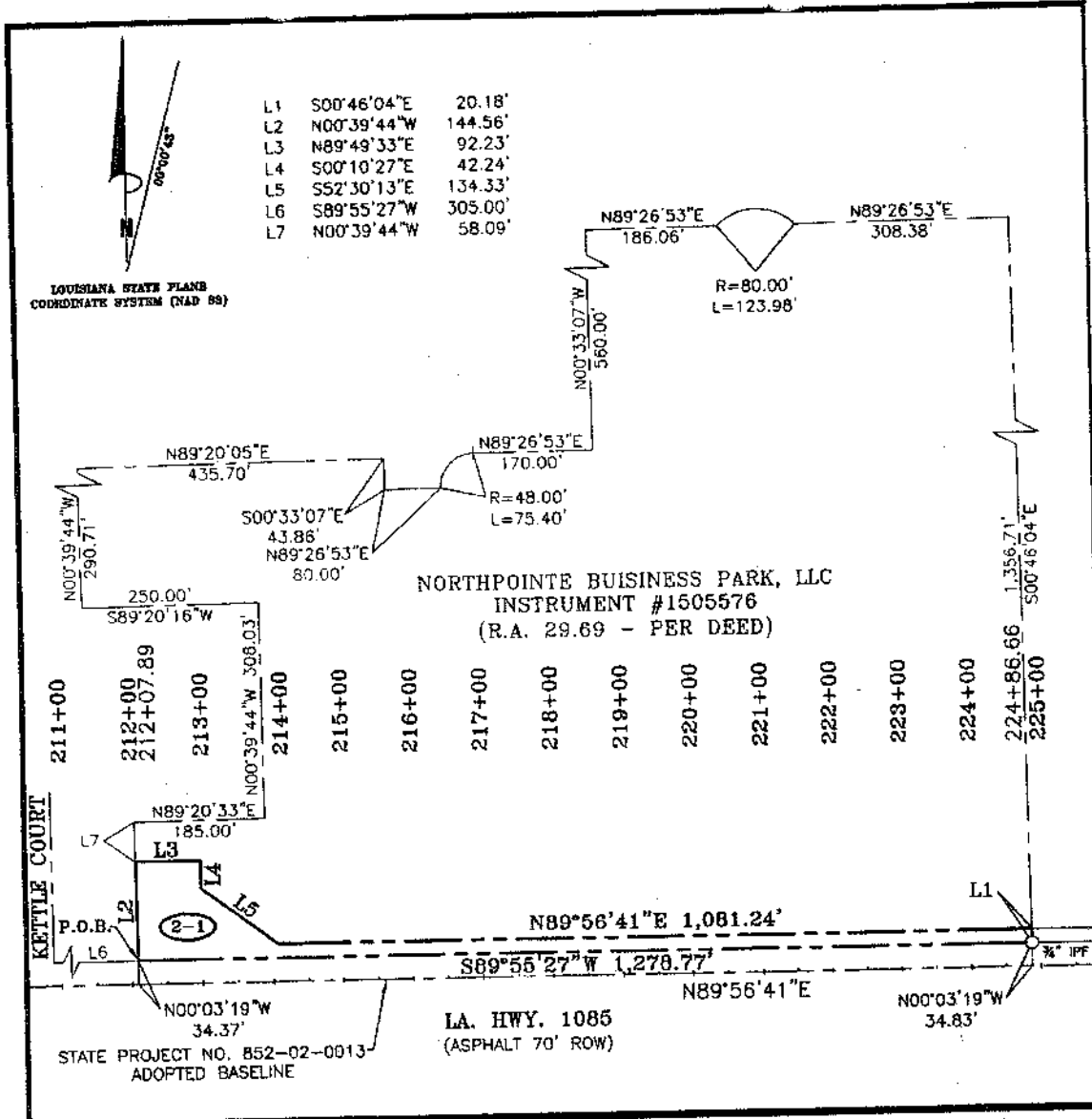
DETAIL MAP OF STATE PROJECT NO. 852-02-0013
0.14 ACRES (5,931.97 SQ. FT.)
STATION 211+43.50 TO 212+11.56
ALONG LA. HWY. 1085 SOUTH RIGHT-OF-WAY LINE
St. Tammany Parish, Louisiana
for
ST. TAMMANY PARISH ROADWAY IMPROVEMENTS

Survey No. 2005392 SOUTH_002 Drawn by: SPH Scale: 1" = 50'
Date: DECEMBER, 2007 Revised:

This Survey is Certified
True and Correct By

JOHN E. BONNEAU & ASSOCIATES, INC.
Professional Land Surveyors • Planners and Consultants
420 HWY. 1085, EXIT #57 • MADISONVILLE, LA. 70447
(985)845-1012 • (985)845-1013 • (985)845-1351 • FAX NO. (985)845-1778
www.JEBCOLandSurveying.com • e-mail: jebco1@bellsouth.net

John E. Bonneau
Professional Land Surveyor
Registration No. 4423



LEGAL DESCRIPTION

A CERTAIN PIECE OR PORTION OF GROUND SITUATED IN SECTION 3, TOWNSHIP 7 SOUTH, RANGE 10 EAST, ST. TAMMANY PARISH, LOUISIANA, COMMENCING AT THE STATION 212+07.89 FROM STATE PROJECT NO. 852-02-0013 ADOPTED BASELINE RUN NORTH 00 DEGREES 03 MINUTES 19 SECONDS WEST A DISTANCE OF 34.37 FEET TO A POINT ON THE NORTHERLY RIGHT-OF-WAY LINE OF LA. HWY. 1085 AND THE POINT OF BEGINNING.

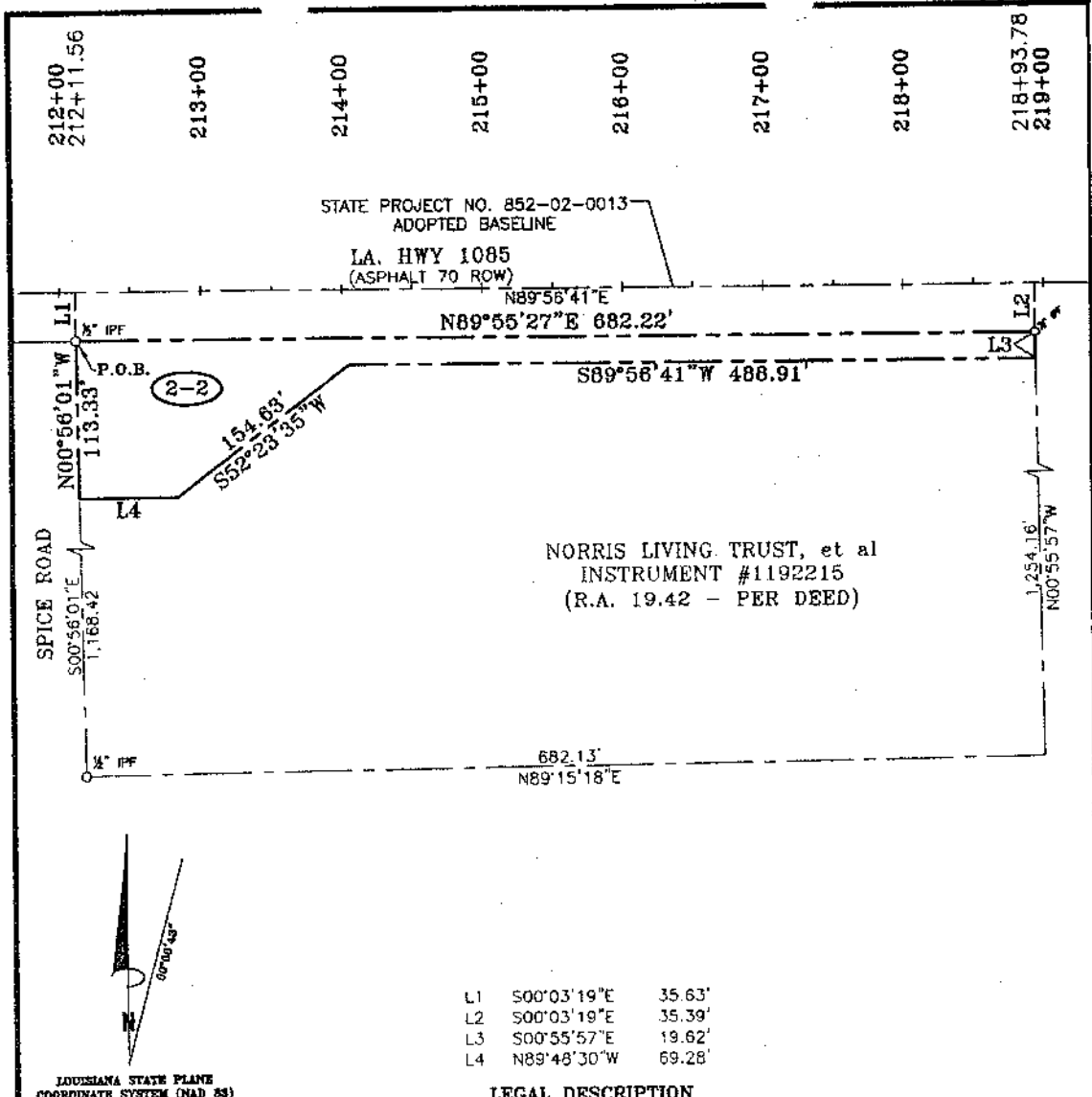
FROM THE POINT OF BEGINNING AND LEAVING SAID RIGHT-OF-WAY, RUN NORTH 00 DEGREES 39 MINUTES 44 SECONDS WEST A DISTANCE OF 144.56 FEET TO A POINT; THENCE RUN NORTH 89 DEGREES 49 MINUTES 33 SECONDS EAST A DISTANCE OF 92.23 FEET TO A POINT; THENCE RUN SOUTH 00 DEGREES 10 MINUTES 27 SECONDS EAST A DISTANCE OF 42.24 FEET TO A POINT; THENCE RUN SOUTH 52 DEGREES 30 MINUTES 13 SECONDS EAST A DISTANCE OF 134.33 FEET TO A POINT; THENCE RUN NORTH 89 DEGREES 56 MINUTES 41 SECONDS EAST A DISTANCE OF 1,081.24 FEET TO A POINT; THENCE RUN SOUTH 00 DEGREES 46 MINUTES 04 SECONDS EAST A DISTANCE OF 20.18 FEET TO A POINT ON THE NORTHERLY RIGHT-OF-WAY OF LA. HWY. 1085; THENCE RUN ALONG SAID RIGHT-OF-WAY SOUTH 89 DEGREES 55 MINUTES 27 SECONDS WEST A DISTANCE OF 1,278.77 FEET BACK TO THE POINT OF BEGINNING.

SAID PIECE OR PORTION OF GROUND CONTAINS 0.96 ACRES (41,816.21 SQ. FT.) MORE OR LESS.

DETAIL MAP OF STATE PROJECT NO. 852-02-0013
 0.96 ACRES (41,816.21 SQ. FT.)
 STATION 212+07.89 TO 224+86.66
 ALONG LA. HWY. 1085 NORTH RIGHT-OF-WAY LINE
 in
 St. Tammany Parish, Louisiana
 for
ST. TAMMANY PARISH ROADWAY IMPROVEMENTS

Survey No. 2005392 NORTH_004 Date: DECEMBER, 2007	Drawn by: SPH Revised:	Scale: 1" = 200'	This Survey is Certified True and Correct By
JOHN E. BONNEAU & ASSOCIATES, INC. Professional Land Surveyors • Planners and Consultants 420 HWY. 1085, EXIT #57 • MADISONVILLE, LA. 70447 (985)845-1012 • (985)845-1013 • (985)845-1351 • FAX NO. (985)845-1778 www.JEBCOLandSurveying.com • e-mail: jebco1@bellsouth.net			
			John E. Bonneau Professional Land Surveyor Registration No. 4423

2-2



LEGAL DESCRIPTION

A CERTAIN PIECE OR PORTION OF GROUND SITUATED IN SECTION 3, TOWNSHIP 7 SOUTH, RANGE 10 EAST, ST. TAMMANY PARISH, LOUISIANA, COMMENCING AT THE STATION 212+11.58 FROM STATE PROJECT NO. 852-02-0013 ADOPTED BASELINE RUN SOUTH 00 DEGREES 03 MINUTES 19 SECONDS EAST A DISTANCE OF 35.63 FEET TO A POINT ON THE SOUTHERLY RIGHT-OF-WAY LINE OF LA. HWY. 1085 AND THE POINT OF BEGINNING.

FROM THE POINT OF BEGINNING, RUN NORTH 89 DEGREES 55 MINUTES 27 SECONDS EAST A DISTANCE OF 682.22 FEET TO A POINT; THENCE LEAVING SAID RIGHT-OF-WAY, RUN SOUTH 00 DEGREES 55 MINUTES 57 SECONDS EAST A DISTANCE OF 19.62 FEET TO A POINT; THENCE RUN SOUTH 89 DEGREES 56 MINUTES 41 SECONDS WEST A DISTANCE OF 488.91 FEET TO A POINT; THENCE RUN SOUTH 52 DEGREES 23 MINUTES 35 SECONDS WEST A DISTANCE OF 154.63 FEET TO A POINT; THENCE RUN NORTH 89 DEGREES 48 MINUTES 30 SECONDS WEST A DISTANCE OF 69.28 FEET TO A POINT; THENCE RUN NORTH 00 DEGREES 58 MINUTES 01 SECONDS WEST A DISTANCE OF 113.33 FEET BACK TO THE POINT OF BEGINNING.

SAID PIECE OR PORTION OF GROUND CONTAINS 0.59 ACRES (25,661.04 SQ. FT.) MORE OR LESS.

DETAIL MAP OF STATE PROJECT NO. 852-02-0013

0.59 ACRES (25,661.04 SQ. FT.)

STATION 212+11.56 TO 218+93.78

ALONG LA. HWY. 1085 SOUTH RIGHT-OF-WAY LINE

St. Tammany Parish, Louisiana

for

ST. TAMMANY PARISH ROADWAY IMPROVEMENTS

Survey No. 2005392 SOUTH_003 Drawn by: SPH Scale: 1" = 100'

Date: DECEMBER, 2007 Revised:

JOHN E. BONNEAU & ASSOCIATES, INC.

Professional Land Surveyors • Planners and Consultants

420 HWY. 1085, EXT #57 • MADISONVILLE, LA. 70447

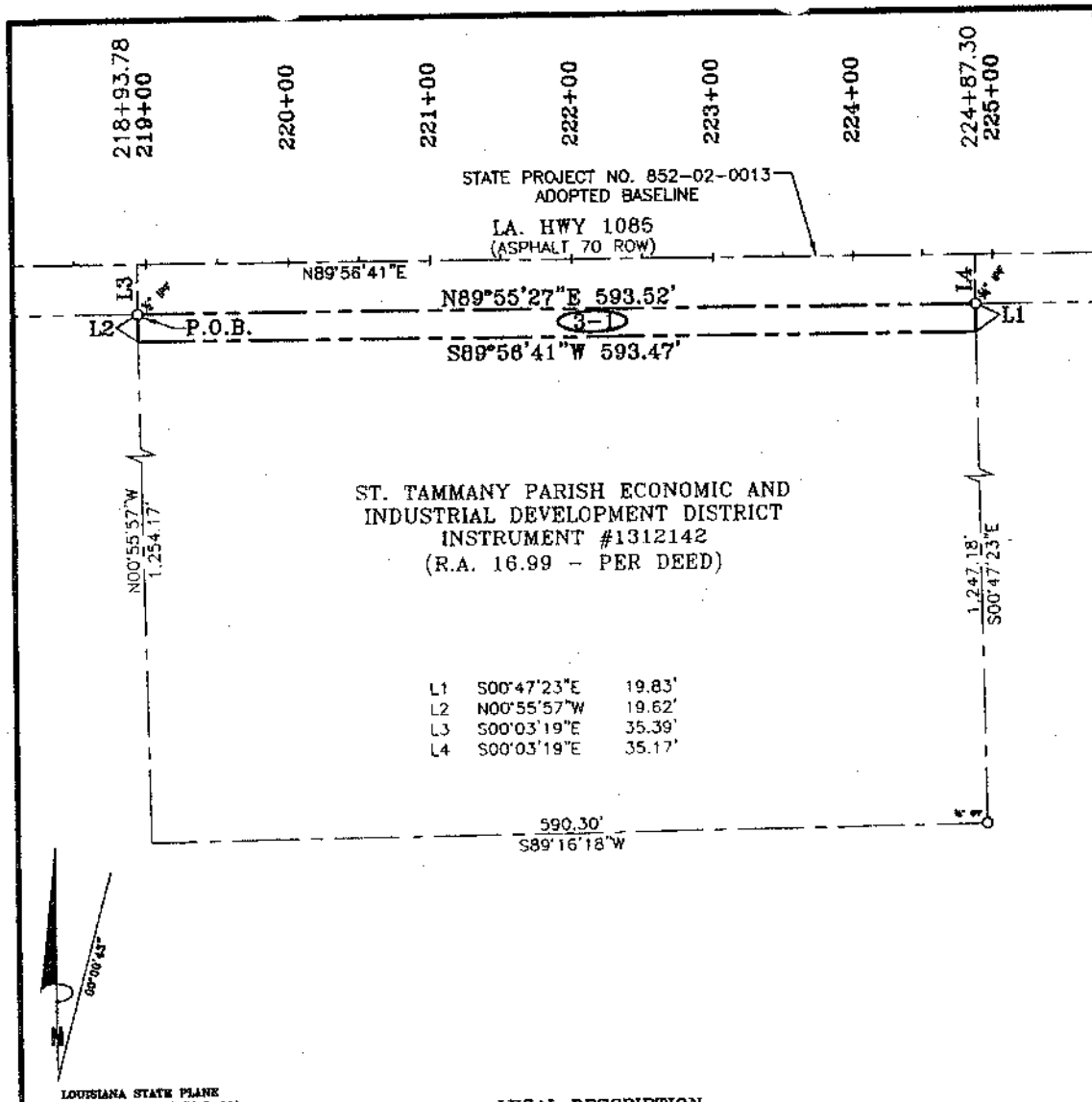
(985)845-1012 • (985)845-1013 • (985)845-1351 • FAX NO. (985)845-1778

www.JEBCOLandSurveying.com • e-mail: jebco1@bellsouth.net

This Survey is Certified True and Correct By

John E. Bonneau
Professional Land Surveyor
Registration No. 4423

3-1



ST. TAMMANY PARISH ECONOMIC AND INDUSTRIAL DEVELOPMENT DISTRICT
INSTRUMENT #1312142
(R.A. 16.99 - PER DEED)

- L1 500°47'23"E 19.83'
- L2 N00°55'57"W 19.62'
- L3 S00°03'19"E 35.39'
- L4 S00°03'19"E 35.17'

LEGAL DESCRIPTION

A CERTAIN PIECE OR PORTION OF GROUND SITUATED IN SECTION 3, TOWNSHIP 7 SOUTH, RANGE 10 EAST, ST. TAMMANY PARISH, LOUISIANA, COMMENCING AT THE STATION 218+93.78 FROM STATE PROJECT NO. 852-02-0013 ADOPTED BASELINE RUN SOUTH 00 DEGREES 03 MINUTES 19 SECONDS EAST A DISTANCE OF 35.39 FEET TO A POINT ON THE SOUTHERLY RIGHT-OF-WAY LINE OF LA. HWY. 1085 AND THE POINT OF BEGINNING.

FROM THE POINT OF BEGINNING, RUN NORTH 89 DEGREES 55 MINUTES 27 SECONDS EAST A DISTANCE OF 593.52 FEET TO A POINT; THENCE LEAVING SAID RIGHT-OF-WAY, RUN SOUTH 00 DEGREES 47 MINUTES 23 SECONDS EAST A DISTANCE OF 19.83 FEET TO A POINT; THENCE RUN SOUTH 89 DEGREES 56 MINUTES 41 SECONDS WEST A DISTANCE 593.47 FEET TO A POINT; THENCE RUN NORTH 00 DEGREES 55 MINUTES 57 SECONDS WEST A DISTANCE OF 19.62 FEET BACK TO THE POINT OF BEGINNING.

SAID PIECE OR PORTION OF GROUND CONTAINS 0.27 ACRES (11,703.32 SQ. FT.) MORE OR LESS.

DETAIL MAP OF STATE PROJECT NO. 852-02-0013
0.27 ACRES (11,703.32 SQ. FT.)
STATION 218+93.78 TO 224+87.30
ALONG LA. HWY. 1085 SOUTH RIGHT-OF-WAY LINE
St. Tammany Parish, Louisiana
for
ST. TAMMANY PARISH ROADWAY IMPROVEMENTS

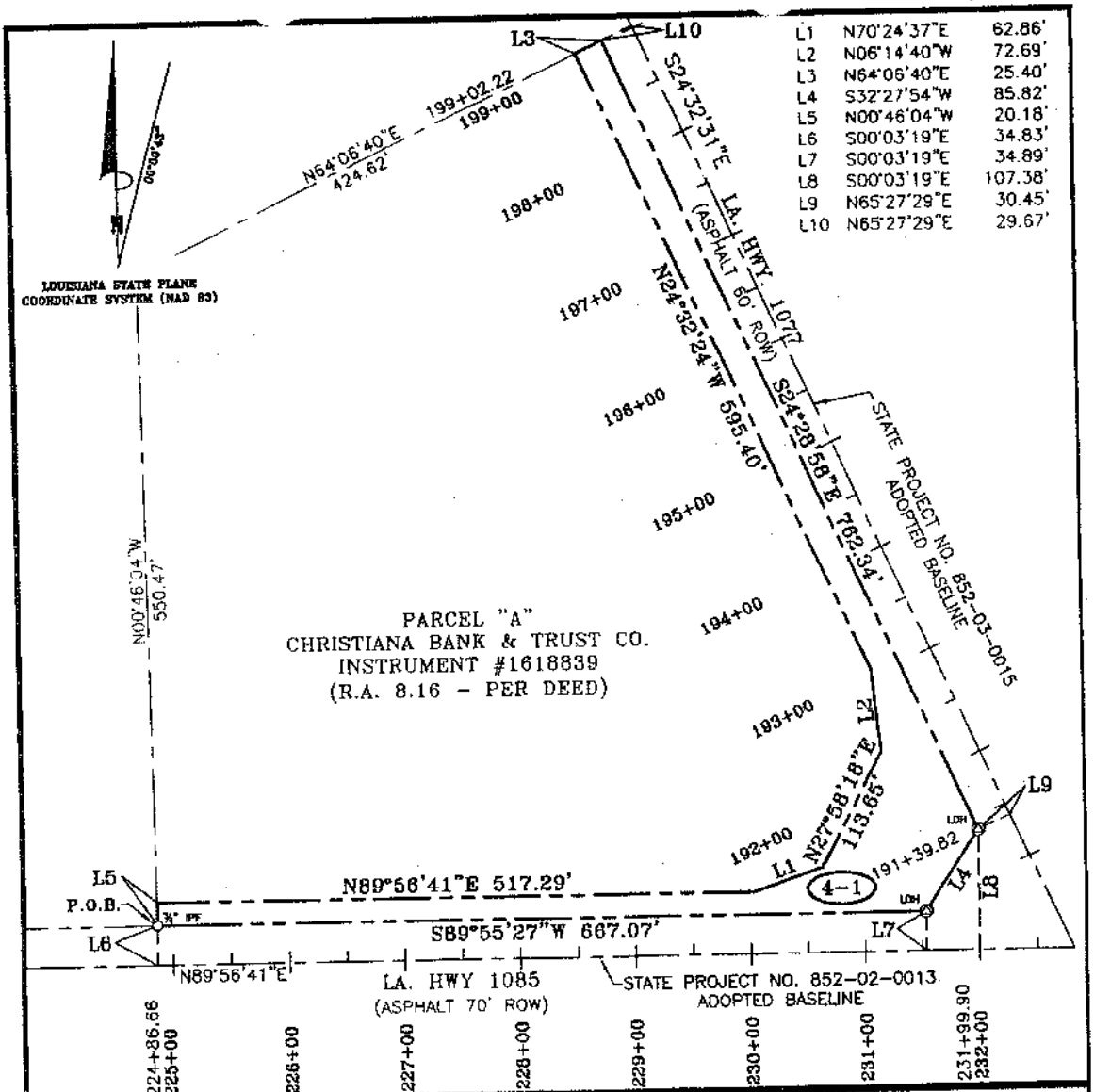
Survey No. 2005392 SOUTH_004 Drawn by: SPH Scale: 1" = 100'
Date: DECEMBER, 2007 Revised:

JOHN E. BONNEAU & ASSOCIATES, INC.
Professional Land Surveyors • Planners and Consultants
420 HWY. 1085, EXIT #57 • MADISONVILLE, LA. 70447
(985)845-1012 • (985)845-1013 • (985)845-1351 • FAX NO. (985)845-1778
www.JEBCOLandSurveying.com • e-mail: jebco1@bellsouth.net

This Survey is Certified True and Correct By

John E. Bonneau
Professional Land Surveyor
Registration No. 4423

4-1



A CERTAIN PIECE OR PORTION OF GROUND SITUATED IN SECTION 3, TOWNSHIP 7 SOUTH, RANGE 10 EAST, ST. TAMMANY PARISH, LOUISIANA, COMMENCING AT THE STATION 224+86.66 FROM STATE PROJECT NO. 852-02-0013 ADOPTED BASELINE RUN NORTH 00 DEGREES 03 MINUTES 19 SECONDS WEST A DISTANCE OF 34.83 FEET TO A POINT ON THE NORTHERLY RIGHT-OF-WAY LINE OF LA. HWY. 1085 AND THE POINT OF BEGINNING.

FROM THE POINT OF BEGINNING AND LEAVING SAID RIGHT-OF-WAY, RUN NORTH 00 DEGREES 46 MINUTES 04 SECONDS WEST A DISTANCE OF 20.18 FEET TO A POINT; THENCE RUN NORTH 89 DEGREES 56 MINUTES 41 SECONDS EAST A DISTANCE OF 517.29 FEET TO A POINT; THENCE RUN NORTH 70 DEGREES 24 MINUTES 37 SECONDS EAST A DISTANCE OF 62.86 FEET TO A POINT; THENCE RUN NORTH 27 DEGREES 58 MINUTES 18 SECONDS EAST A DISTANCE OF 113.65 FEET TO A POINT; THENCE RUN NORTH 24 DEGREES 32 MINUTES 24 SECONDS WEST A DISTANCE OF 595.40 FEET TO A POINT; THENCE RUN NORTH 84 DEGREES 08 MINUTES 40 SECONDS EAST A DISTANCE OF 25.40 FEET TO A POINT ON THE WESTERLY RIGHT-OF-WAY OF LA. HWY. 1077; THENCE RUN ALONG SAID RIGHT-OF-WAY SOUTH 24 DEGREES 28 MINUTES 58 SECONDS EAST A DISTANCE OF 782.34 FEET TO A POINT; THENCE RUN SOUTH 32 DEGREES 27 MINUTES 54 SECONDS WEST A DISTANCE OF 62.18 FEET TO A POINT ON THE NORTHERLY RIGHT-OF-WAY OF LA. HWY. 1085; THENCE RUN ALONG SAID RIGHT-OF-WAY SOUTH 89 DEGREES 55 MINUTES 27 SECONDS WEST A DISTANCE OF 667.07 FEET BACK TO THE POINT OF BEGINNING.

SAID PIECE OR PORTION OF GROUND CONTAINS 1.01 ACRES (44,069.57 SQ. FT.) MORE OR LESS.

DETAIL MAP OF STATE PROJECT NO. 852-02-0013 & 852-03-0015
 1.01 ACRES (44,069.57 SQ. FT.)
 STATION 224+86.66 TO 231+99.90 ALONG LA. HWY. 1085
 NORTH RIGHT-OF-WAY LINE STATION 199+02.22 TO 191+39.82
 ALONG LA. HWY. 1077
 St. Tammany Parish, Louisiana
 for
ST. TAMMANY PARISH ROADWAY IMPROVEMENTS

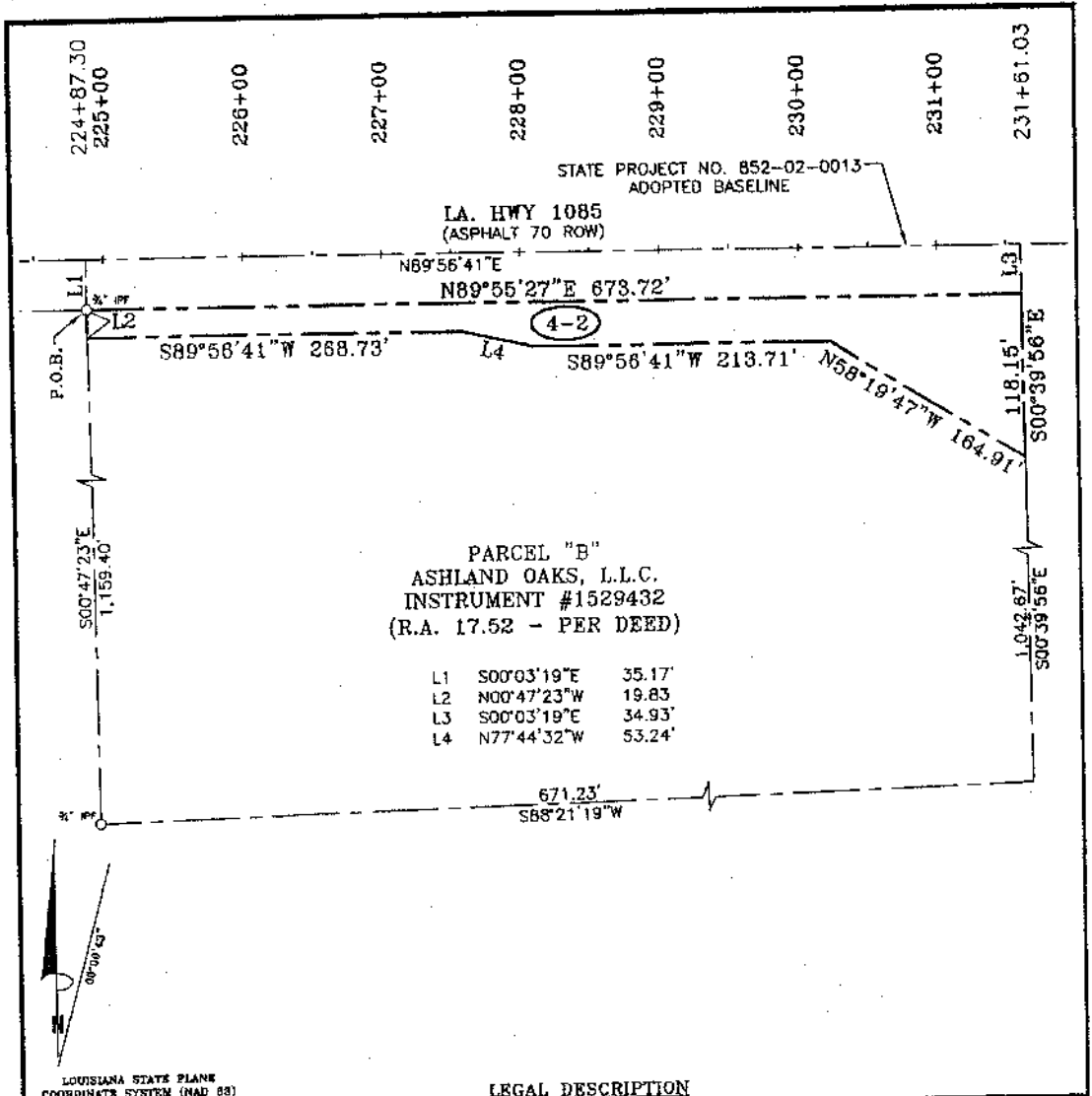
Survey No. 2005392 NORTH_005 Drawn by: SPH Scale: 1" = 120'
 Date: DECEMBER, 2007 Revised:

JOHN E. BONNEAU & ASSOCIATES, INC.
 Professional Land Surveyors • Planners and Consultants
 420 HWY. 1085, EXIT #57 • MADISONVILLE, LA. 70447
 (985)845-1012 • (985)845-1013 • (985)845-1351 • FAX NO. (985)845-1778
 www.JEBCOLandSurveying.com • e-mail: jebca1@bellsouth.net

This Survey is Certified True and Correct By

 John E. Bonneau
 Professional Land Surveyor
 Registration No. 4423

4-2



LOUISIANA STATE PLANE COORDINATE SYSTEM (NAD 83)

LEGAL DESCRIPTION

A CERTAIN PIECE OR PORTION OF GROUND SITUATED IN SECTION 3, TOWNSHIP 7 SOUTH, RANGE 10 EAST, ST. TAMMANY PARISH, LOUISIANA, COMMENCING AT THE STATION 224+87.30 FROM STATE PROJECT NO. 852-02-0013 ADOPTED BASELINE RUN SOUTH 00 DEGREES 03 MINUTES 19 SECONDS EAST A DISTANCE OF 35.17 FEET TO A POINT ON THE SOUTHERLY RIGHT-OF-WAY LINE OF LA. HWY. 1085 AND THE POINT OF BEGINNING.

FROM THE POINT OF BEGINNING, RUN NORTH 89 DEGREES 55 MINUTES 27 SECONDS EAST A DISTANCE OF 873.72 FEET TO A POINT; THENCE LEAVING SAID RIGHT-OF-WAY, RUN SOUTH 00 DEGREES 39 MINUTES 56 SECONDS EAST A DISTANCE OF 118.15 FEET TO A POINT; THENCE RUN NORTH 58 DEGREES 19 MINUTES 47 SECONDS WEST A DISTANCE 164.91 FEET TO A POINT; THENCE RUN SOUTH 89 DEGREES 56 MINUTES 41 SECONDS WEST A DISTANCE OF 213.71 FEET TO A POINT; THENCE RUN NORTH 77 DEGREES 44 MINUTES 32 SECONDS WEST A DISTANCE OF 53.24 FEET TO A POINT; THENCE RUN SOUTH 89 DEGREES 56 MINUTES 41 SECONDS WEST A DISTANCE OF 268.73 FEET TO A POINT; THENCE RUN NORTH 00 DEGREES 47 MINUTES 23 SECONDS WEST A DISTANCE OF 19.83 FEET BACK TO THE POINT OF BEGINNING.

SAID PIECE OR PORTION OF GROUND CONTAINS 0.55 ACRES (23,783.07 SQ. FT.) MORE OR LESS.

DETAIL MAP OF STATE PROJECT NO. 852-02-0013
0.55 ACRES (23,783.07 SQ. FT.)
STATION 224+87.30 TO 231+61.03
ALONG LA. HWY. 1085 SOUTH RIGHT-OF-WAY LINE
 St. Tammany Parish, Louisiana
 for
ST. TAMMANY PARISH ROADWAY IMPROVEMENTS

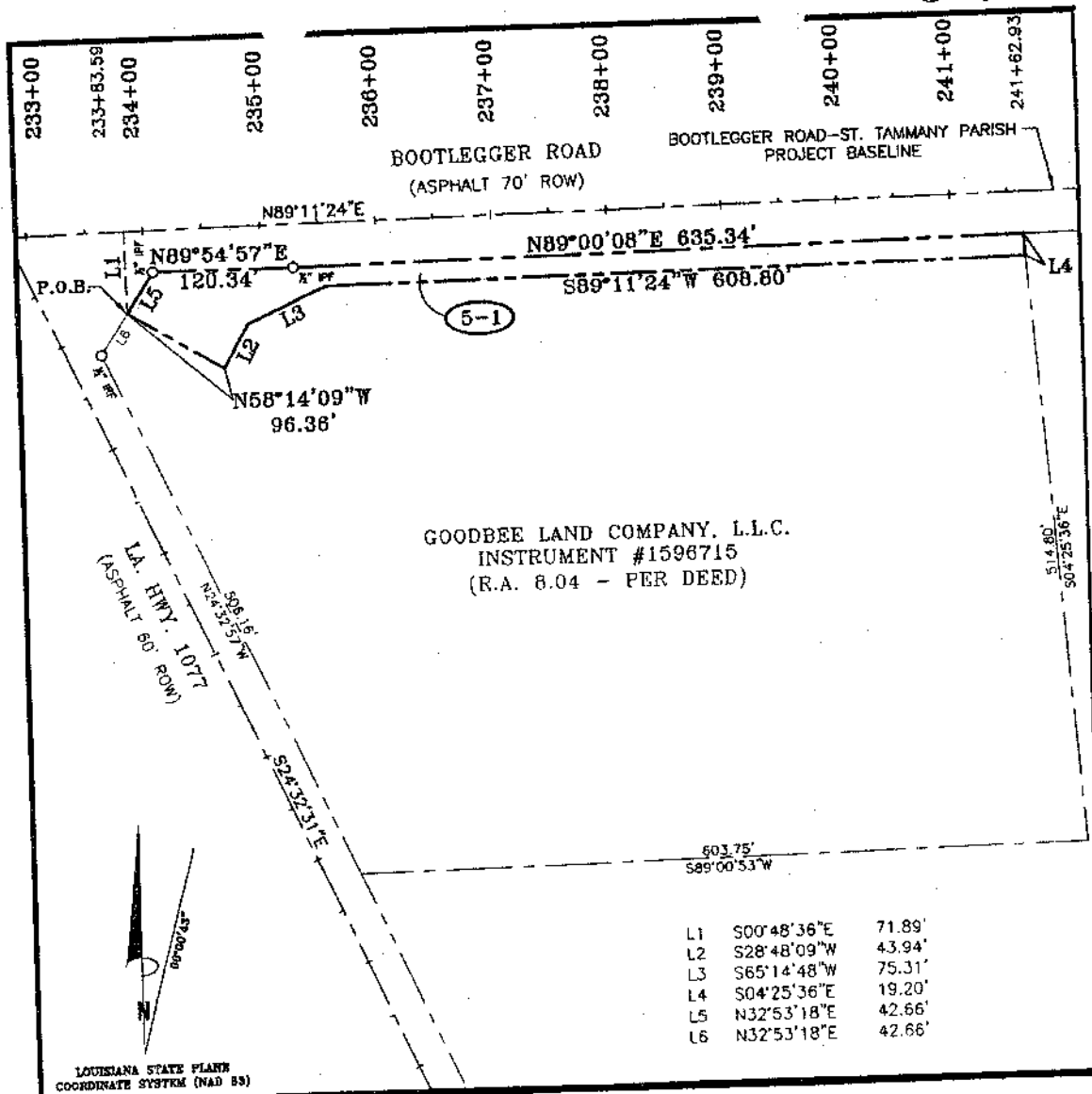
Survey No. 2005392 SOUTH_005 Drawn by: SPH Date: DECEMBER, 2007 Revised: Scale: 1" = 100'

This Survey is Certified True and Correct By

JOHN E. BONNEAU & ASSOCIATES, INC.
 Professional Land Surveyors • Planners and Consultants
 420 HWY. 1085, EXIT #57 • MADISONVILLE, LA. 70447
 (985)845-1012 • (985)845-1013 • (985)845-1351 • FAX NO. (985)845-1778
 www.JEBCOLandSurveying.com • e-mail: jebco1@bellsouth.net

John E. Bonneau
 Professional Land Surveyor
 Registration No. 4423

5-1



LEGAL DESCRIPTION

A CERTAIN PIECE OR PORTION OF GROUND SITUATED IN SECTION 3, TOWNSHIP 7 SOUTH, RANGE 10 EAST, ST. TAMMANY PARISH, LOUISIANA COMMENCING AT THE STATION 233+83.59 FROM BOOTLEGGER ROAD-ST. TAMMANY PARISH ADOPTED BASELINE RUN SOUTH 00 DEGREES 48 MINUTES 36 SECONDS EAST A DISTANCE OF 71.89 FEET TO A POINT ON THE SOUTHERLY RIGHT-OF-WAY LINE OF BOOTLEGGER ROAD AND THE POINT OF BEGINNING.

FROM THE POINT OF BEGINNING, CONTINUE ALONG SAID RIGHT-OF-WAY NORTH 32 DEGREES 53 MINUTES 18 SECONDS EAST A DISTANCE OF 42.88 FEET TO A POINT; THENCE RUN NORTH 89 DEGREES 54 MINUTES 57 SECONDS EAST A DISTANCE OF 120.34 FEET TO A POINT; THENCE CONTINUE ALONG SAID RIGHT-OF-WAY NORTH 89 DEGREES 00 MINUTES 08 SECONDS EAST A DISTANCE OF 635.34 FEET TO A POINT; THENCE LEAVING SAID RIGHT-OF-WAY, RUN SOUTH 04 DEGREES 25 MINUTES 36 SECONDS EAST A DISTANCE OF 19.20 FEET TO A POINT; THENCE RUN SOUTH 89 DEGREES 11 MINUTES 24 SECONDS WEST A DISTANCE OF 608.80 FEET TO A POINT; THENCE RUN SOUTH 85 DEGREES 14 MINUTES 48 SECONDS WEST A DISTANCE OF 75.31 FEET TO A POINT; THENCE RUN SOUTH 28 DEGREES 48 MINUTES 09 SECONDS WEST A DISTANCE OF 43.94 FEET TO A POINT; THENCE RUN NORTH 58 DEGREES 14 MINUTES 09 SECONDS WEST A DISTANCE OF 96.36 FEET BACK TO THE POINT OF BEGINNING.

SAID PIECE OR PORTION OF GROUND CONTAINS 0.44 ACRES (19,300.23 SQ. FT.) MORE OR LESS.

DETAIL MAP OF BOOTLEGGER ROAD-ST. TAMMANY PARISH

**0.44 ACRES (19,300.23 SQ. FT.)
STATION 233+83.59 TO 241+62.93
ALONG BOOTLEGGER ROAD**

St. Tammany Parish, Louisiana

**for
ST. TAMMANY PARISH ROADWAY IMPROVEMENTS**

Survey No. 2005392 SOUTH_009
Date: DECEMBER, 2007

Drawn by: SPH
Revised:

Scale: 1" = 120'

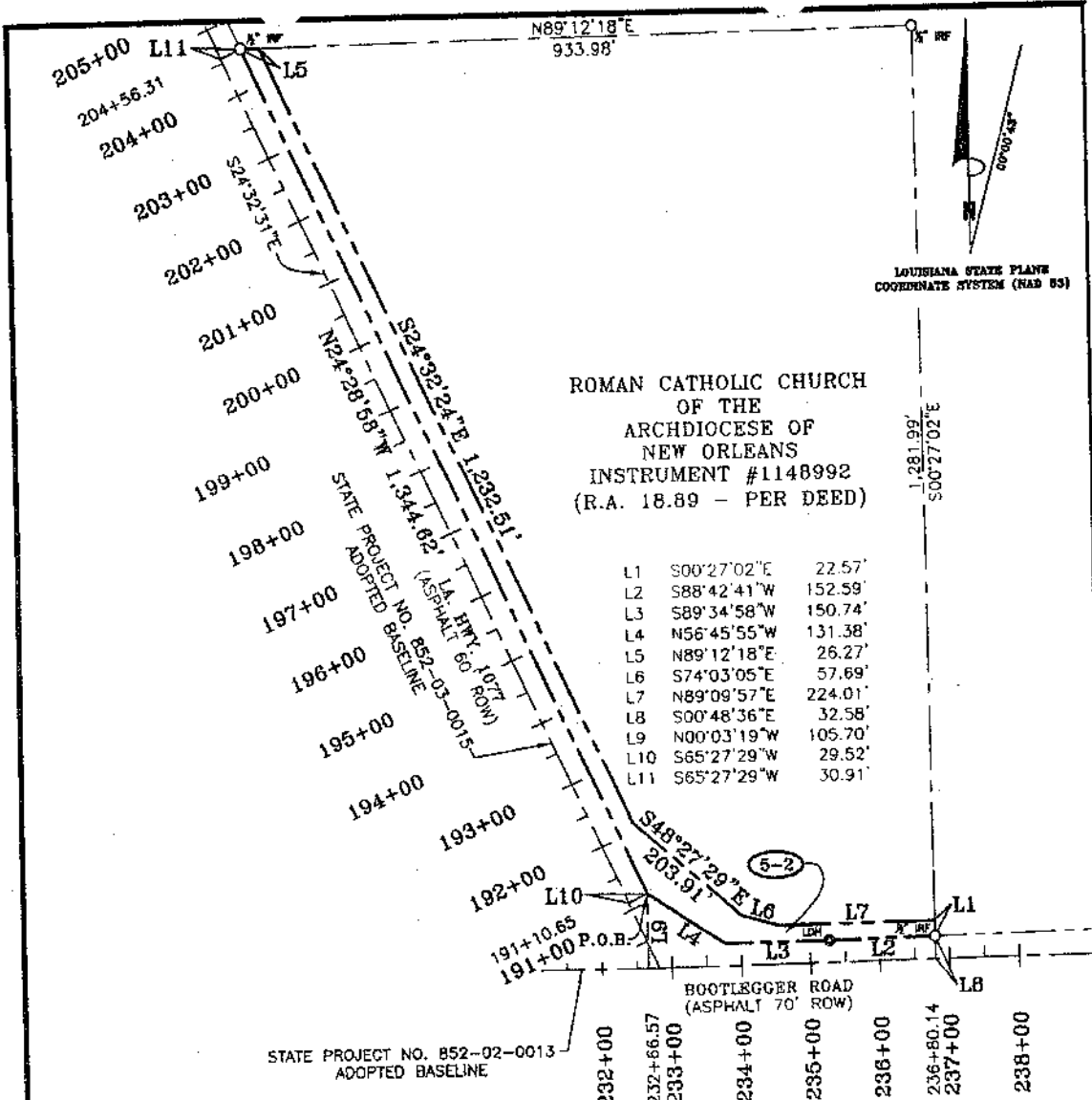
This Survey is Certified True and Correct By

JOHN E. BONNEAU & ASSOCIATES, INC.
Professional Land Surveyors • Planners and Consultants

420 HWY. 1085, EXIT #57 • MADISONVILLE, LA. 70447
(985)845-1012 • (985)845-1013 • (985)845-1351 • FAX NO. (985)845-1778
www.JEBCOLandSurveying.com • e-mail: jebco1@bellsouth.net

John E. Bonneau
Professional Land Surveyor
Registration No. 4423

5-2



ROMAN CATHOLIC CHURCH
OF THE
ARCHDIOCESE OF
NEW ORLEANS
INSTRUMENT #1148992
(R.A. 18.89 - PER DEED)

L1	S00°27'02"E	22.57'
L2	S88°42'41"W	152.59'
L3	S89°34'58"W	150.74'
L4	N56°45'55"W	131.38'
L5	N89°12'18"E	26.27'
L6	S74°03'05"E	57.69'
L7	N89°09'57"E	224.01'
L8	S00°48'36"E	32.58'
L9	N00°03'19"W	105.70'
L10	S65°27'29"W	29.52'
L11	S65°27'29"W	30.91'

A CERTAIN PIECE OR PORTION OF GROUND SITUATED IN SECTION 3, TOWNSHIP 7 SOUTH, RANGE 10 EAST, ST. TAMMANY PARISH, LOUISIANA, COMMENCING AT THE STATION 232+66.57 FROM STATE PROJECT NO. 852-02-0013 ADOPTED BASELINE RUN NORTH 00 DEGREES 03 MINUTES 19 SECONDS WEST A DISTANCE OF 105.70 FEET TO A POINT ON THE EASTERLY RIGHT-OF-WAY LINE OF LA. HWY. 1077 AND THE POINT OF BEGINNING.

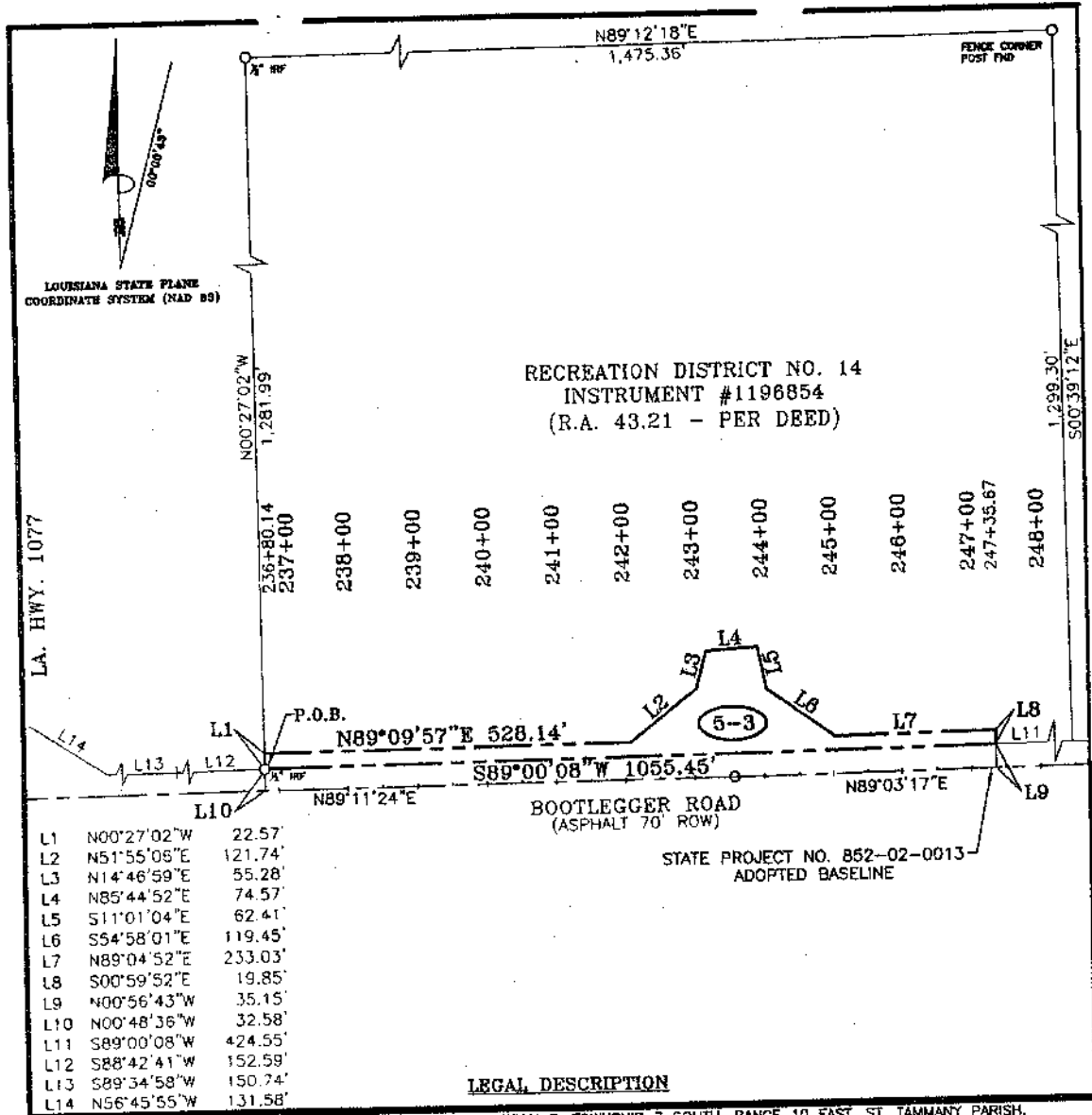
FROM THE POINT OF BEGINNING, RUN NORTH 24 DEGREES 28 MINUTES 58 SECONDS WEST A DISTANCE OF 1,344.62 FEET TO A POINT; THENCE LEAVING SAID RIGHT-OF-WAY, RUN NORTH 89 DEGREES 12 MINUTES 18 SECONDS EAST A DISTANCE OF 26.27 FEET TO A POINT; THENCE RUN SOUTH 24 DEGREES 32 MINUTES 24 SECONDS EAST A DISTANCE OF 1,232.51 FEET TO A POINT; THENCE RUN SOUTH 48 DEGREES 27 MINUTES 29 SECONDS EAST A DISTANCE OF 203.91 FEET TO A POINT; THENCE RUN SOUTH 74 DEGREES 03 MINUTES 05 SECONDS EAST A DISTANCE OF 57.69 FEET TO A POINT; THENCE RUN NORTH 89 DEGREES 09 MINUTES 57 SECONDS EAST A DISTANCE OF 224.01 FEET TO A POINT; THENCE RUN SOUTH 00 DEGREES 02 SECONDS EAST A DISTANCE OF 22.57 FEET TO A POINT; ON THE NORTHERLY RIGHT-OF-WAY OF BOOTLEGGER ROAD; THENCE RUN ALONG SAID RIGHT-OF-WAY SOUTH 88 DEGREES 42 MINUTES 41 SECONDS WEST A DISTANCE OF 152.59 FEET TO A POINT; THENCE CONTINUE ALONG SAID RIGHT-OF-WAY SOUTH 89 DEGREES 34 MINUTES 58 SECONDS WEST A DISTANCE OF 150.74 FEET TO A POINT; THENCE RUN NORTH 56 DEGREES 45 MINUTES 55 SECONDS WEST A DISTANCE OF 131.38 FEET BACK TO THE POINT OF BEGINNING.

SAID PIECE OR PORTION OF GROUND CONTAINS 1.12 ACRES (48,846.41 SQ. FT.) MORE OR LESS.

DETAIL MAP OF STATE PROJECT NO. 852-02-0013 & 852-03-0015
1.12 ACRES (48,846.41 SQ. FT.)
STATION 232+66.57 TO 236+80.14 ALONG BOOTLEGGER ROAD
NORTH RIGHT-OF-WAY LINE & STATION 191+10.65 TO
204+56.31 ALONG LA. HWY. 1077 EAST RIGHT-OF-WAY LINE
St. Tammany Parish, Louisiana
for
ST. TAMMANY PARISH ROADWAY IMPROVEMENTS

Survey No. 2005392 NORTH_006	Drawn by: SPH	Scale: 1" = 200'	This Survey is Certified True and Correct By
Date: DECEMBER, 2007	Revised:		
JOHN E. BONNEAU & ASSOCIATES, INC.			John E. Bonneau Professional Land Surveyor Registration No. 4423
Professional Land Surveyors • Planners and Consultants			
420 HWY. 1085, EXIT #57 • MADISONVILLE, LA. 70447 (985)845-1012 • (985)845-1013 • (985)845-1351 • FAX NO. (985)845-1778 www.JEBCOLandSurveying.com • e-mail: jebco1@bellsouth.net			

5-3



LEGAL DESCRIPTION

A CERTAIN PIECE OR PORTION OF GROUND SITUATED IN SECTION 3, TOWNSHIP 7 SOUTH, RANGE 10 EAST, ST. TAMMANY PARISH, LOUISIANA, COMMENCING AT THE STATION 236+80.14 FROM STATE PROJECT NO. 852-02-0013 ADOPTED BASELINE RUN NORTH 00 DEGREES 48 MINUTES 36 SECONDS WEST A DISTANCE OF 32.58 FEET TO A POINT ON THE NORTHERLY RIGHT-OF-WAY LINE OF LA. HWY. 1085 AND THE POINT OF BEGINNING.

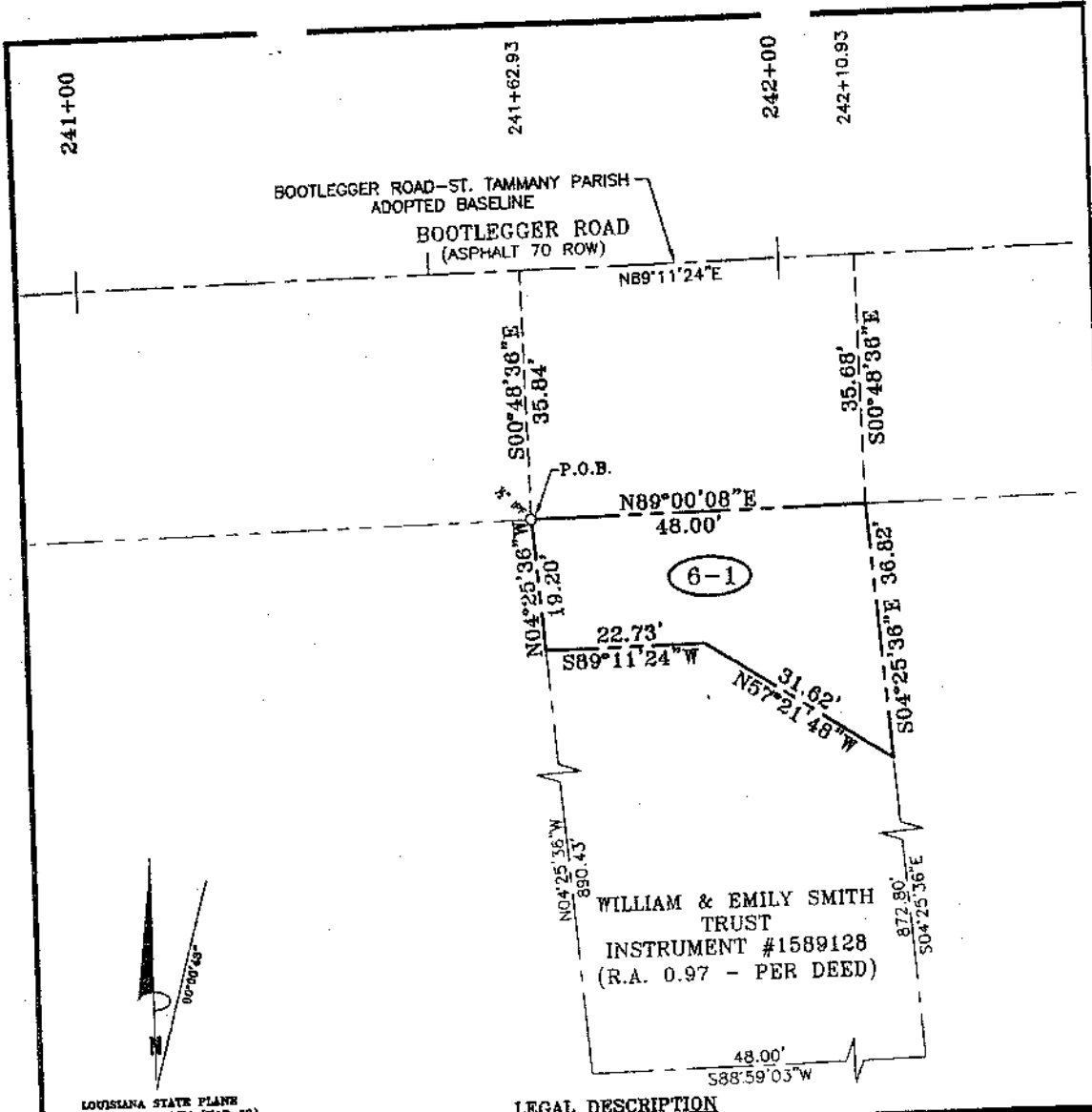
FROM THE POINT OF BEGINNING AND LEAVING SAID RIGHT-OF-WAY, RUN NORTH 00 DEGREES 27 MINUTES 02 SECONDS WEST A DISTANCE OF 22.57 FEET TO A POINT; THENCE RUN NORTH 89 DEGREES 09 MINUTES 57 SECONDS EAST A DISTANCE OF 528.14 FEET TO A POINT; THENCE RUN NORTH 51 DEGREES 55 MINUTES 06 SECONDS EAST A DISTANCE OF 121.74 FEET TO A POINT; THENCE RUN NORTH 14 DEGREES 46 MINUTES 59 SECONDS EAST A DISTANCE OF 74.57 FEET TO A POINT; THENCE RUN NORTH 85 DEGREES 44 MINUTES 52 SECONDS EAST A DISTANCE OF 74.57 FEET TO A POINT; THENCE RUN SOUTH 11 DEGREES 01 MINUTES 04 SECONDS EAST A DISTANCE OF 62.41 FEET TO A POINT; THENCE RUN SOUTH 54 DEGREES 58 MINUTES 01 SECONDS EAST A DISTANCE OF 119.45 FEET TO A POINT; THENCE RUN SOUTH 89 DEGREES 04 MINUTES 52 SECONDS EAST A DISTANCE OF 233.03 FEET TO A POINT; THENCE RUN SOUTH 00 DEGREES 59 MINUTES 52 SECONDS EAST A DISTANCE OF 19.85 FEET TO A POINT ON THE NORTHERLY RIGHT-OF-WAY OF BOOTLEGGER ROAD; THENCE RUN ALONG SAID RIGHT-OF-WAY, SOUTH 89 DEGREES 00 MINUTES 08 SECONDS WEST A DISTANCE OF 1,055.45 FEET BACK TO THE POINT OF BEGINNING.

SAID PIECE OR PORTION OF GROUND CONTAINS 0.95 ACRES (41,426.78 SQ. FT.) MORE OR LESS.

DETAIL MAP OF STATE PROJECT NO. 852-02-0013
0.95 ACRES (41,426.78 SQ. FT.)
STATION 236+80.14 TO 247+35.67
ALONG LA. HWY. 1085 NORTH RIGHT-OF-WAY LINE
in
St. Tammany Parish, Louisiana
for
ST. TAMMANY PARISH ROADWAY IMPROVEMENTS

Survey No. 2005392 NORTH_007	Drawn by: SPH	Scale: 1" = 200'	This Survey is Certified True and Correct By
Date: DECEMBER, 2007	Revised:		
JOHN E. BONNEAU & ASSOCIATES, INC. Professional Land Surveyors • Planners and Consultants			John E. Bonneau Professional Land Surveyor Registration No. 4423
420 HWY. 1085, EXIT #57 • MADISONVILLE, LA. 70447			
(985)845-1012 • (985)845-1013 • (985)845-1351 • FAX NO. (985)845-1778 www.JEBCOLandSurveying.com • e-mail: jebco1@bellsouth.net			

6-1



LEGAL DESCRIPTION

A CERTAIN PIECE OR PORTION OF GROUND SITUATED IN SECTION 3, TOWNSHIP 7 SOUTH, RANGE 10 EAST, ST. TAMMANY PARISH, LOUISIANA, COMMENCING AT THE STATION 241+62.93 FROM BOOTLEGGER ROAD-ST. TAMMANY PARISH ADOPTED BASELINE RUN SOUTH 00 DEGREES 48 MINUTES 36 SECONDS EAST A DISTANCE OF 35.84 FEET TO A POINT ON THE SOUTHERLY RIGHT-OF-WAY LINE OF LA. HWY. 1085 AND THE POINT OF BEGINNING.

FROM THE POINT OF BEGINNING, RUN NORTH 89 DEGREES 00 MINUTES 08 SECONDS EAST A DISTANCE OF 48.00 FEET TO A POINT; THENCE LEAVING SAID RIGHT-OF-WAY, RUN SOUTH 04 DEGREES 25 MINUTES 36 SECONDS EAST A DISTANCE OF 36.82 FEET TO A POINT; THENCE RUN NORTH 57 DEGREES 21 MINUTES 48 SECONDS WEST A DISTANCE OF 31.02 FEET TO A POINT; THENCE RUN SOUTH 89 DEGREES 11 MINUTES 24 SECONDS WEST A DISTANCE OF 22.73 FEET TO A POINT; THENCE RUN NORTH 04 DEGREES 25 MINUTES 36 SECONDS WEST A DISTANCE OF 19.20 FEET BACK TO THE POINT OF BEGINNING.

SAID PIECE OR PORTION OF GROUND CONTAINS 0.03 ACRES (1,144.06 SQ. FT.) MORE OR LESS.

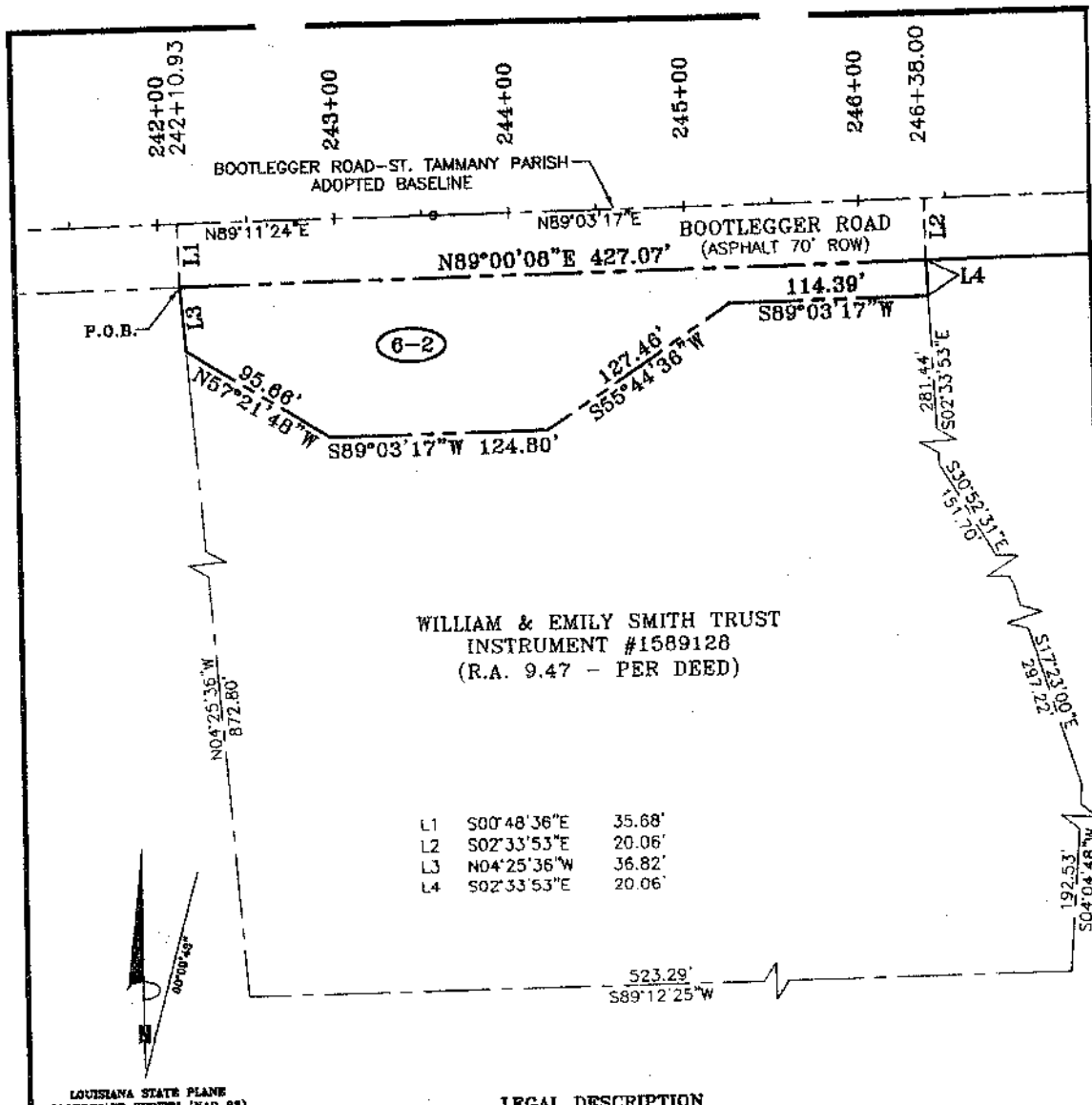
DETAIL MAP OF BOOTLEGGER ROAD-ST. TAMMANY PARISH
 0.03 ACRES (1,144.06 SQ. FT.)
 STATION 241+62.93 TO 242+10.93
 ALONG BOOTLEGGER ROAD SOUTH RIGHT-OF-WAY LINE
 St. Tammany Parish, Louisiana
 for
ST. TAMMANY PARISH ROADWAY IMPROVEMENTS

Survey No. 2005392 SOUTH_006 Drawn by: SPH Scale: 1" = 20'
 Date: DECEMBER, 2007 Revised:

JOHN E. BONNEAU & ASSOCIATES, INC.
 Professional Land Surveyors • Planners and Consultants
 420 HWY. 1085, EXIT #57 • MADISONVILLE, LA. 70447
 (985)845-1012 • (985)845-1013 • (985)845-1351 • FAX NO. (985)845-1778
 www.JEBCOLandSurveying.com • e-mail: jebco1@bellsouth.net

This Survey is Certified True and Correct By
 John E. Bonneau
 Professional Land Surveyor
 Registration No. 4423

6-2



LEGAL DESCRIPTION

A CERTAIN PIECE OR PORTION OF GROUND SITUATED IN SECTION 3, TOWNSHIP 7 SOUTH, RANGE 10 EAST, ST. TAMMANY PARISH, LOUISIANA, COMMENCING AT THE STATION 242+10.93 FROM BOOTLEGGER ROAD-ST. TAMMANY PARISH ADOPTED BASELINE RUN SOUTH 00 DEGREES 48 MINUTES 36 SECONDS EAST A DISTANCE OF 35.68 FEET TO A POINT ON THE SOUTHERLY RIGHT-OF-WAY LINE OF BOOTLEGGER ROAD AND THE POINT OF BEGINNING.

FROM THE POINT OF BEGINNING, RUN NORTH 89 DEGREES 00 MINUTES 08 SECONDS EAST A DISTANCE OF 427.07 FEET TO A POINT; THENCE LEAVING SAID RIGHT-OF-WAY, RUN SOUTH 02 DEGREES 33 MINUTES 53 SECONDS EAST A DISTANCE OF 20.06 FEET TO A POINT; THENCE RUN SOUTH 89 DEGREES 03 MINUTES 17 SECONDS WEST A DISTANCE 114.39 FEET TO A POINT; THENCE RUN SOUTH 55 DEGREES 44 MINUTES 38 SECONDS WEST A DISTANCE OF 127.46 FEET TO A POINT; THENCE RUN NORTH 89 DEGREES 03 MINUTES 17 SECONDS WEST A DISTANCE OF 124.80 FEET TO A POINT; THENCE RUN NORTH 57 DEGREES 21 MINUTES 48 SECONDS WEST A DISTANCE OF 95.66 FEET TO A POINT; THENCE RUN NORTH 04 DEGREES 25 MINUTES 36 SECONDS WEST A DISTANCE OF 36.82 FEET BACK TO THE POINT OF BEGINNING.

SAID PIECE OR PORTION OF GROUND CONTAINS 0.56 ACRES (24,419.60 SQ. FT.) MORE OR LESS.

DETAIL MAP OF BOOTLEGGER ROAD-ST. TAMMANY PARISH

0.56 ACRES (24,419.60 SQ. FT.)

STATION 242+10.93 TO 246+38.00

ALONG LA. HWY. 1085 SOUTH RIGHT-OF-WAY LINE

St. Tammany Parish, Louisiana

for

ST. TAMMANY PARISH ROADWAY IMPROVEMENTS

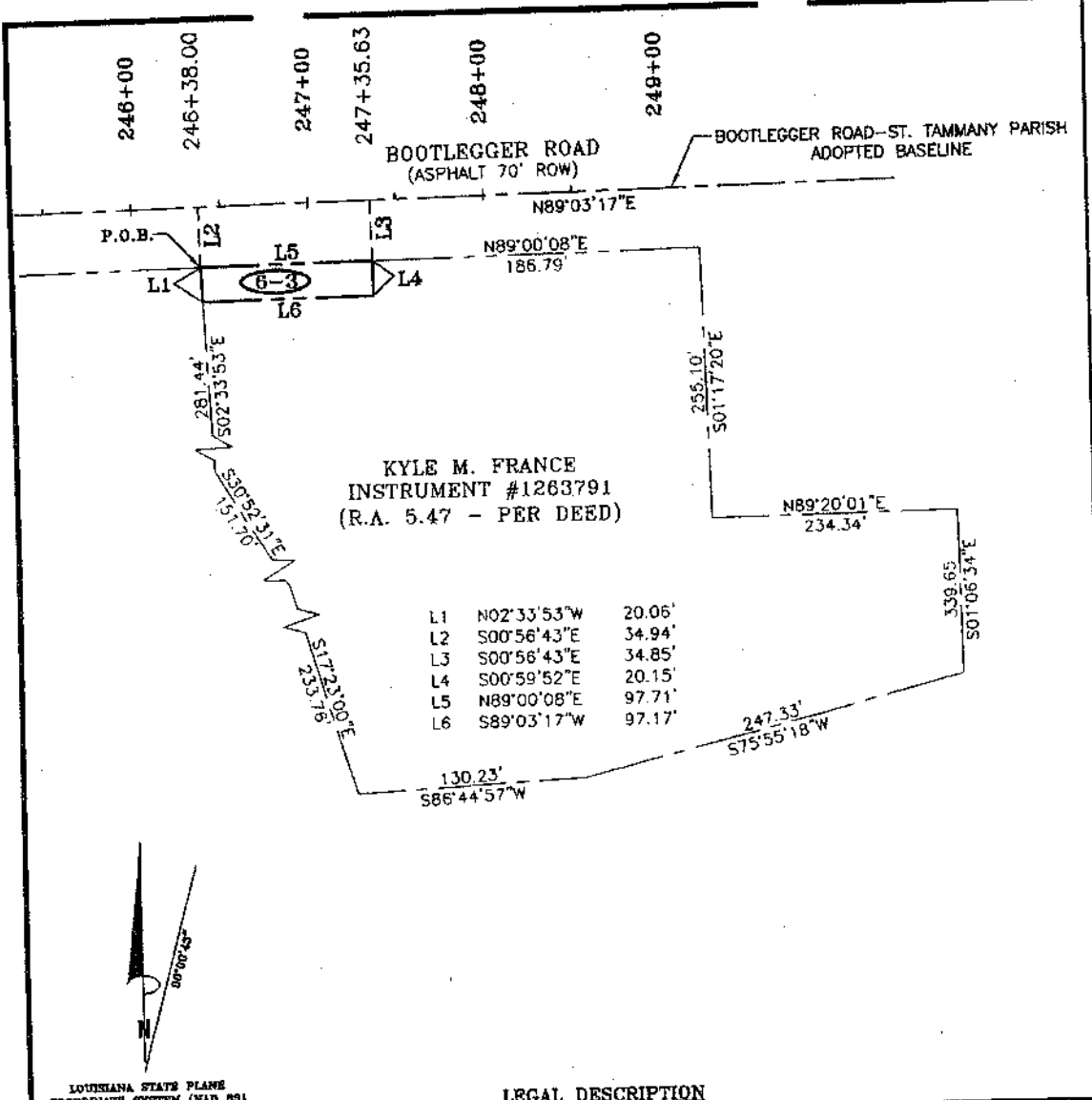
Survey No. 2005392 SOUTH_007 Drawn by: SPH Scale: 1" = 80'
Date: DECEMBER, 2007 Revised:

JOHN E. BONNEAU & ASSOCIATES, INC.
Professional Land Surveyors • Planners and Consultants
420 HWY. 1085, EXIT #57 • MADISONVILLE, LA. 70447
(985)845-1012 • (985)845-1013 • (985)845-1351 • FAX NO. (985)845-1778
www.JEBCOLandSurveying.com • e-mail: jebco1@bellsouth.net

This Survey is Certified True and Correct By

John E. Bonneau
Professional Land Surveyor
Registration No. 4423

6-3



LEGAL DESCRIPTION

A CERTAIN PIECE OR PORTION OF GROUND SITUATED IN SECTION 3, TOWNSHIP 7 SOUTH, RANGE 10 EAST, ST. TAMMANY PARISH, LOUISIANA, COMMENCING AT THE STATION 246+38.00 FROM BOOTLEGGER ROAD-ST. TAMMANY PARISH ADOPTED BASELINE RUN SOUTH 00 DEGREES 58 MINUTES 43 SECONDS EAST A DISTANCE OF 34.94 FEET TO A POINT ON THE SOUTHERLY RIGHT-OF-WAY LINE OF BOOTLEGGER ROAD AND THE POINT OF BEGINNING.

FROM THE POINT OF BEGINNING, RUN NORTH 89 DEGREES 00 MINUTES 08 SECONDS EAST A DISTANCE OF 97.71 FEET TO A POINT; THENCE LEAVING SAID RIGHT-OF-WAY, RUN SOUTH 00 DEGREES 59 MINUTES 52 SECONDS EAST A DISTANCE OF 20.15 FEET TO A POINT; THENCE RUN SOUTH 89 DEGREES 03 MINUTES 17 SECONDS WEST A DISTANCE 97.17 FEET TO A POINT; THENCE RUN NORTH 02 DEGREES 33 MINUTES 53 SECONDS WEST A DISTANCE OF 20.06 FEET BACK TO THE POINT OF BEGINNING.

SAID PIECE OR PORTION OF GROUND CONTAINS 0.04 ACRES (1,958.71 SQ. FT.) MORE OR LESS.

DETAIL MAP OF BOOTLEGGER ROAD-ST. TAMMANY PARISH

0.04 ACRES (1,958.71 SQ. FT.)

STATION 246+38.00 TO 247+35.63

ALONG BOOTLEGGER ROAD SOUTH RIGHT-OF-WAY LINE

St. Tammany Parish, Louisiana

for

ST. TAMMANY PARISH ROADWAY IMPROVEMENTS

Survey No. 2005392 SOUTH_008 Drawn by: SPH Scale: 1" = 80'

Date: DECEMBER, 2007 Revised:

JOHN E. BONNEAU & ASSOCIATES, INC.

Professional Land Surveyors • Planners and Consultants

420 HWY. 1085, EXIT #57 • MADISONVILLE, LA. 70447

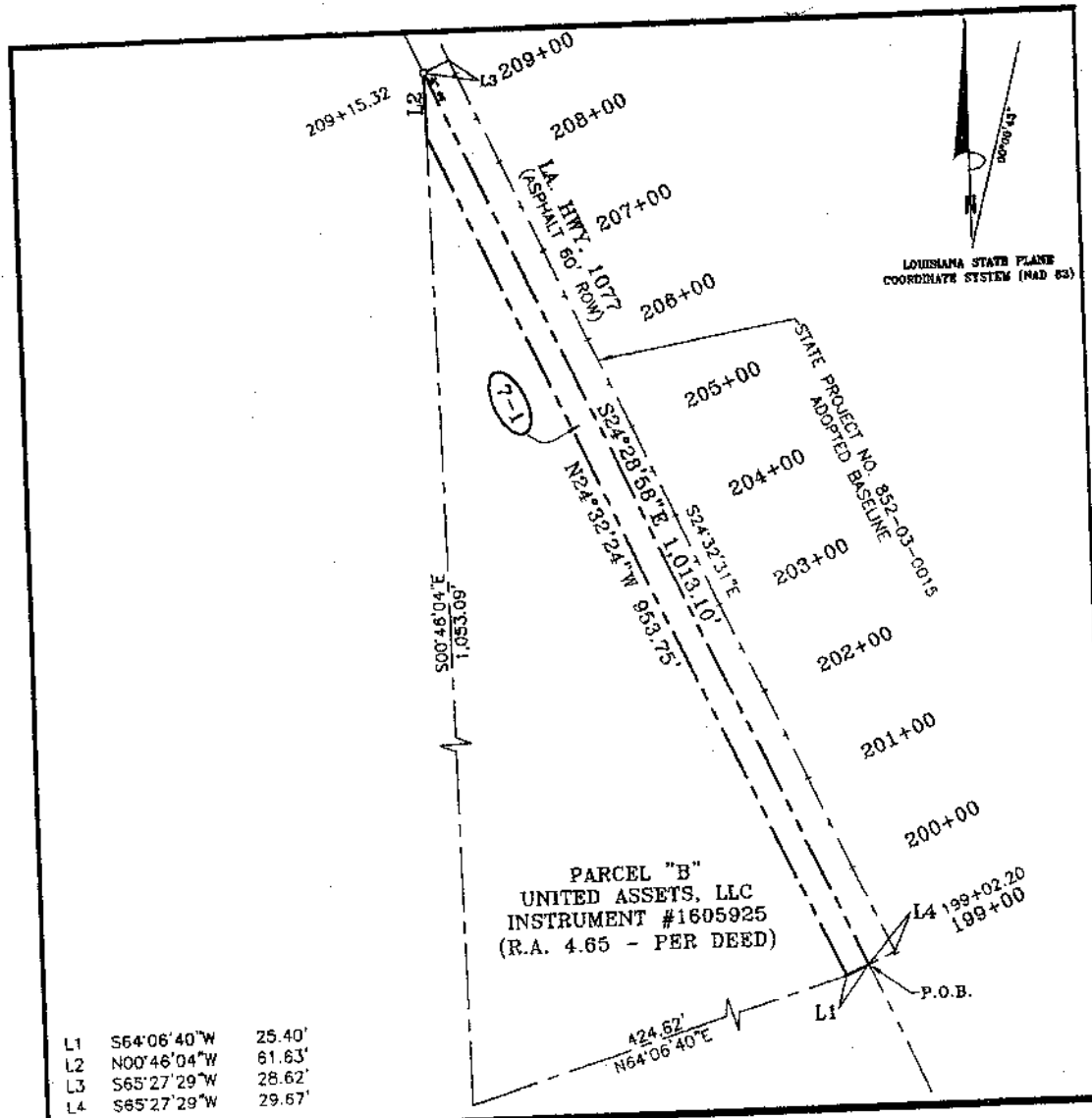
(985)845-1012 • (985)845-1013 • (985)845-1351 • FAX NO. (985)845-1778

www.JEBCOLandSurveying.com • e-mail: jebco1@bellsouth.net

This Survey is Certified True and Correct By

John E. Bonneau
Professional Land Surveyor
Registration No. 4423

7-1



LEGAL DESCRIPTION

A CERTAIN PIECE OR PORTION OF GROUND SITUATED IN SECTION 3, TOWNSHIP 7 SOUTH, RANGE 10 EAST, ST. TAMMANY PARISH, LOUISIANA, COMMENCING AT THE STATION 199+02.20 FROM STATE PROJECT NO. 852-03-0015 ADOPTED BASELINE RUN SOUTH 65 DEGREES 27 MINUTES 29 SECONDS WEST A DISTANCE OF 29.67 FEET TO A POINT ON THE WESTERLY RIGHT-OF-WAY LINE OF LA. HWY. 1077 AND THE POINT OF BEGINNING.

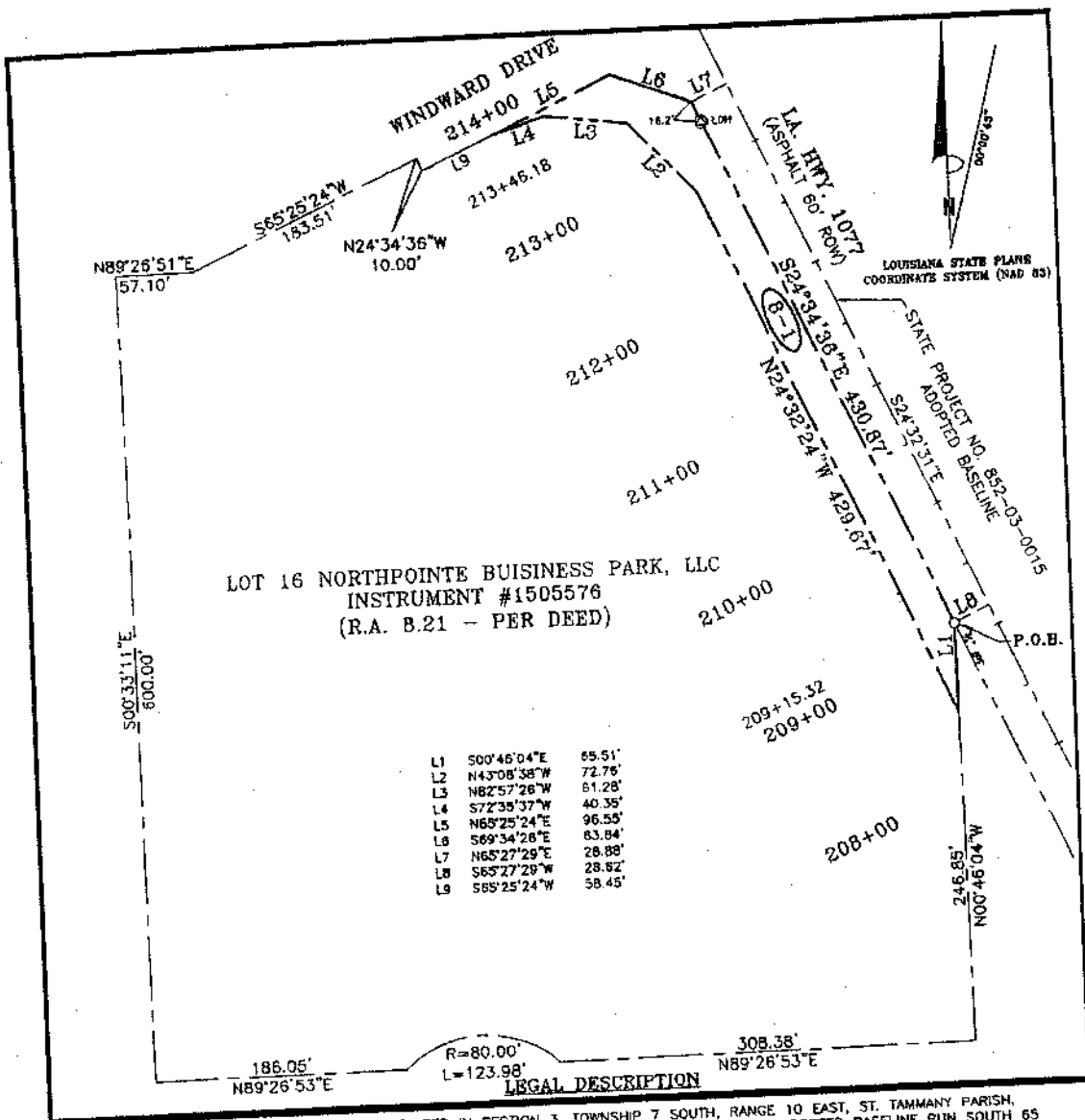
FROM THE POINT OF BEGINNING AND LEAVING SAID RIGHT-OF-WAY, RUN SOUTH 64 DEGREES 06 MINUTES 40 SECONDS WEST A DISTANCE OF 25.40 FEET TO A POINT; THENCE RUN NORTH 24 DEGREES 32 MINUTES 24 SECONDS WEST A DISTANCE OF 953.75 FEET TO A POINT; THENCE RUN NORTH 00 DEGREES 46 MINUTES 04 SECONDS WEST A DISTANCE OF 65.51 FEET TO A POINT ON THE WESTERLY RIGHT-OF-WAY OF LA. HWY. 1077; THENCE RUN ALONG SAID RIGHT-OF-WAY, SOUTH 24 DEGREES 28 MINUTES 58 SECONDS EAST A DISTANCE OF 1,013.10 FEET BACK TO THE POINT OF BEGINNING.

SAID PIECE OR PORTION OF GROUND CONTAINS 0.58 ACRES (25,454.87 SQ. FT.) MORE OR LESS.

DETAIL MAP OF STATE PROJECT NO. 852-03-0015
0.58 ACRES (25,454.87 SQ. FT.)
STATION 199+02.20 TO 209+15.32
ALONG LA. HWY. 1077 WEST RIGHT-OF-WAY LINE
 St. Tammany Parish, Louisiana
 for
ST. TAMMANY PARISH ROADWAY IMPROVEMENTS

Survey No. 2005392 WEST_003 Date: DECEMBER, 2007	Drawn by: SPH Revised:	Scale: 1" = 140'	This Survey is Certified True and Correct By John E. Bonneau Professional Land Surveyor Registration No. 4423
JOHN E. BONNEAU & ASSOCIATES, INC. Professional Land Surveyors • Planners and Consultants 420 HWY. 1085, EXIT #57 • MADISONVILLE, LA. 70447 (985)845-1012 • (985)845-1013 • (985)845-1351 • FAX NO. (985)845-1778 www.JEBCOLandSurveying.com • e-mail: jebco1@bellsouth.net			

8.1



A CERTAIN PIECE OR PORTION OF GROUND SITUATED IN SECTION 3, TOWNSHIP 7 SOUTH, RANGE 10 EAST, ST. TAMMANY PARISH, LOUISIANA, COMMENCING AT THE STATION 209+15.32 FROM STATE PROJECT NO. 852-03-0015 ADOPTED BASELINE RUN SOUTH 65 DEGREES 27 MINUTES 29 SECONDS WEST A DISTANCE OF 28.62 FEET TO A POINT ON THE WESTERLY RIGHT-OF-WAY LINE OF LA. HWY. 1077 AND THE POINT OF BEGINNING.

FROM THE POINT OF BEGINNING AND LEAVING SAID RIGHT-OF-WAY, RUN SOUTH 00 DEGREES 46 MINUTES 04 SECONDS EAST A DISTANCE OF 65.51 FEET TO A POINT; THENCE RUN NORTH 24 DEGREES 32 MINUTES 24 SECONDS WEST A DISTANCE OF 429.67 FEET TO A POINT; THENCE RUN NORTH 43 DEGREES 08 MINUTES 38 SECONDS WEST A DISTANCE OF 72.76 FEET TO A POINT; THENCE RUN NORTH 82 DEGREES 57 MINUTES 28 SECONDS WEST A DISTANCE OF 61.28 FEET TO A POINT; THENCE RUN SOUTH 72 DEGREES 35 MINUTES 37 SECONDS WEST A DISTANCE OF 40.35 FEET TO A POINT; THENCE RUN NORTH 65 DEGREES 25 MINUTES 24 SECONDS EAST A DISTANCE OF 96.55 FEET TO A POINT; THENCE RUN SOUTH 69 DEGREES 34 MINUTES 28 SECONDS EAST A DISTANCE OF 63.84 FEET TO A POINT; THENCE RUN SOUTH 65 DEGREES 27 SECONDS EAST A DISTANCE OF 28.88 FEET TO A POINT ON THE WESTERLY RIGHT-OF-WAY OF LA. HWY. 1077; THENCE RUN ALONG SAID RIGHT-OF-WAY SOUTH 24 DEGREES 34 MINUTES 36 SECONDS EAST A DISTANCE OF 430.87 FEET BACK TO THE POINT OF BEGINNING.

SAID PIECE OR PORTION OF GROUND CONTAINS 0.35 ACRES (15,138.77 SQ. FT.) MORE OR LESS.

DETAIL MAP OF STATE PROJECT NO. 852-03-0015

0.35 ACRES (15,138.77 SQ. FT.)
STATION 209+15.32 TO 213+46.18
ALONG LA. HWY. 1077 WEST RIGHT-OF-WAY LINE

St. Tammany Parish, Louisiana
for
ST. TAMMANY PARISH ROADWAY IMPROVEMENTS

Survey No. 2005392 WEST_002 Drawn by: SPH Scale: 1" = 80'
Date: DECEMBER, 2007 Revised:

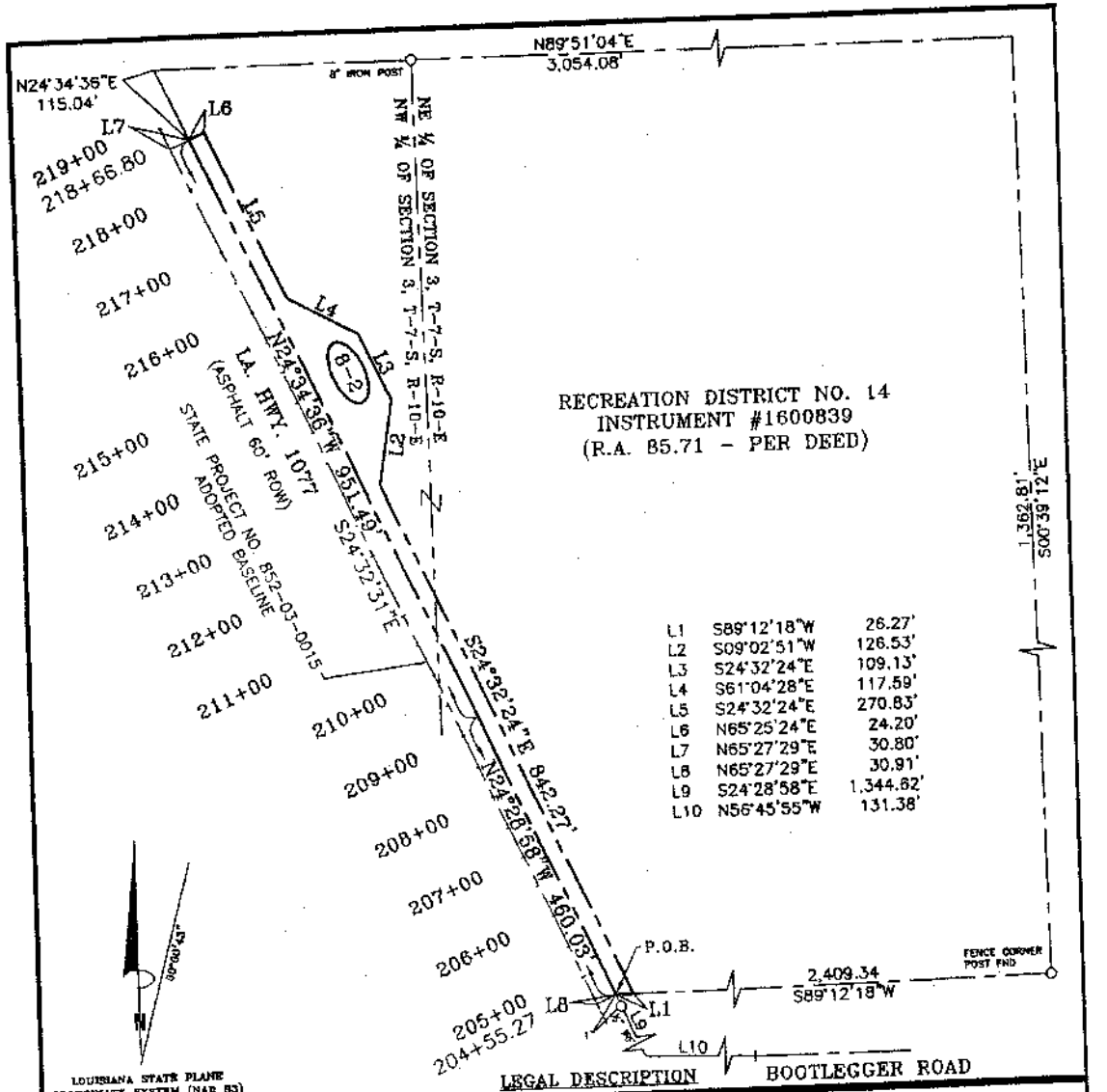
JOHN E. BONNEAU & ASSOCIATES, INC.
Planners and Consultants
Professional Land Surveyors

420 HWY. 1085, EXIT #57 • MADISONVILLE, LA. 70447
(985)845-1012 • (985)845-1013 • (985)845-1351 • FAX NO. (985)845-1778
www.JEBCOLandSurveying.com • e-mail: jebco1@bellsouth.net

This Survey is Certified True and Correct By

John E. Bonneau
Professional Land Surveyor
Registration No. 4423

8-2



LEGAL DESCRIPTION

BOOTLEGGERS ROAD

A CERTAIN PIECE OR PORTION OF GROUND SITUATED IN SECTION 3, TOWNSHIP 7 SOUTH, RANGE 10 EAST, ST. TAMMANY PARISH, LOUISIANA, COMMENCING AT THE STATION 204+55.27 FROM STATE PROJECT NO. 852-03-0015 ADOPTED BASELINE RUN NORTH 65 DEGREES 27 MINUTES 29 SECONDS EAST A DISTANCE OF 30.91 FEET TO A POINT ON THE EASTERLY RIGHT-OF-WAY LINE OF LA. HWY. 1077 AND THE POINT OF BEGINNING.

FROM THE POINT OF BEGINNING, RUN ALONG SAID RIGHT-OF-WAY NORTH 24 DEGREES 28 MINUTES 58 SECONDS WEST A DISTANCE OF 480.03 FEET TO A POINT; THENCE CONTINUE ALONG SAID RIGHT-OF-WAY NORTH 24 DEGREES 34 MINUTES 36 SECONDS WEST A DISTANCE OF 951.49 FEET TO A POINT; THENCE LEAVING SAID RIGHT-OF-WAY RUN NORTH 65 DEGREES 25 MINUTES 24 SECONDS EAST A DISTANCE OF 24.20 FEET TO A POINT; THENCE RUN SOUTH 24 DEGREES 32 MINUTES 24 SECONDS EAST A DISTANCE OF 270.83 FEET TO A POINT; THENCE RUN SOUTH 61 DEGREES 04 MINUTES 28 SECONDS EAST A DISTANCE OF 117.59 FEET TO A POINT; THENCE RUN SOUTH 24 DEGREES 32 MINUTES 24 SECONDS EAST A DISTANCE OF 109.13 FEET TO A POINT; THENCE RUN SOUTH 09 DEGREES 02 MINUTES 51 SECONDS WEST A DISTANCE OF 126.53 FEET TO A POINT; THENCE RUN SOUTH 24 DEGREES 32 MINUTES 24 SECONDS EAST A DISTANCE OF 26.27 FEET TO A POINT; THENCE RUN SOUTH 89 DEGREES 12 MINUTES 18 SECONDS WEST A DISTANCE OF 26.27 FEET BACK TO THE POINT OF BEGINNING.

SAID PIECE OR PORTION OF GROUND CONTAINS 1.11 ACRES (48,454.51 SQ. FT.) MORE OR LESS.

DETAIL MAP OF STATE PROJECT NO. 852-03-0015

1.11 ACRES (48,454.51 SQ. FT.)

STATION 204+55.27 TO 218+66.80

ALONG LA. HWY. 1077 EAST RIGHT-OF-WAY LINE

St. Tammany Parish, Louisiana

for

ST. TAMMANY PARISH ROADWAY IMPROVEMENTS

Survey No. 2005392 EAST_003 Drawn by: SPH Scale: 1" = 200'

Date: DECEMBER, 2007 Revised:

JOHN E. BONNEAU & ASSOCIATES, INC.

Professional Land Surveyors Planners and Consultants

420 HWY. 1085, EXIT #57 • MADISONVILLE, LA. 70447

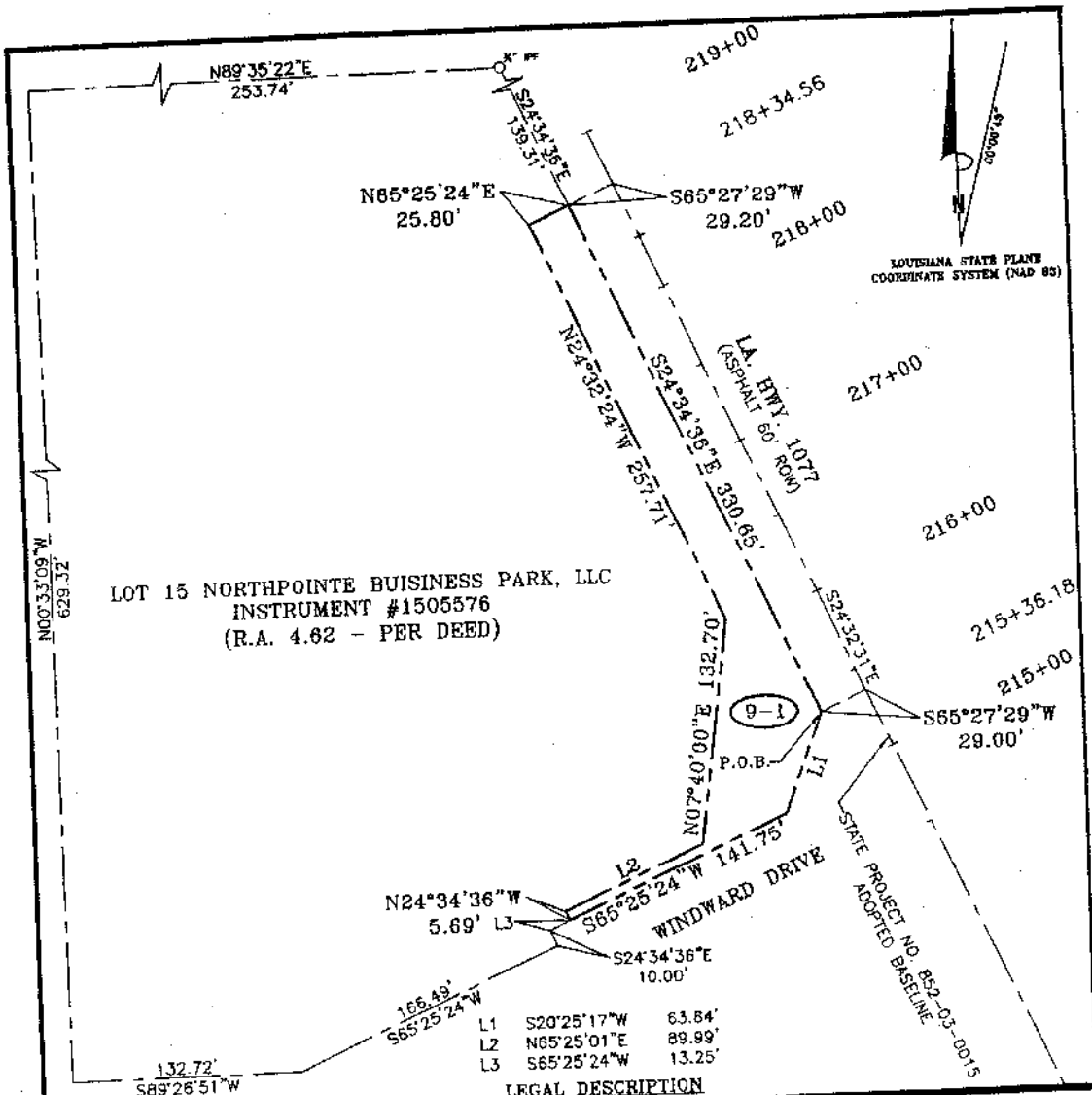
(985)845-1012 • (985)845-1013 • (985)845-1351 • FAX NO. (985)845-1778

www.JEBCOLandSurveying.com e-mail: jebco1@bellsouth.net

This Survey is Certified True and Correct By

John E. Bonneau
Professional Land Surveyor
Registration No. 4423

9-1



A CERTAIN PIECE OR PORTION OF GROUND SITUATED IN SECTION 3, TOWNSHIP 7 SOUTH, RANGE 10 EAST, ST. TAMMANY PARISH, LOUISIANA, COMMENCING AT THE STATION 215+36.18 FROM STATE PROJECT NO. 852-03-0015 ADOPTED BASELINE RUN SOUTH 65 DEGREES 27 MINUTES 29 SECONDS WEST A DISTANCE OF 29.00 FEET TO A POINT ON THE WESTERLY RIGHT-OF-WAY LINE OF LA. HWY. 1077 AND THE POINT OF BEGINNING.

FROM THE POINT OF BEGINNING AND LEAVING SAID RIGHT-OF-WAY, RUN SOUTH 20 DEGREES 25 MINUTES 17 SECONDS WEST A DISTANCE OF 63.84 FEET TO A POINT; THENCE RUN SOUTH 65 DEGREES 25 MINUTES 24 SECONDS WEST A DISTANCE OF 141.75 FEET TO A POINT; THENCE RUN NORTH 24 DEGREES 34 MINUTES 36 SECONDS WEST A DISTANCE OF 5.69 FEET TO A POINT; THENCE RUN NORTH 07 DEGREES 40 MINUTES 50 SECONDS EAST A DISTANCE OF 89.99 FEET TO A POINT; THENCE RUN NORTH 24 DEGREES 32 MINUTES 24 SECONDS WEST A DISTANCE OF 257.71 FEET TO A POINT; THENCE RUN NORTH 65 DEGREES 25 MINUTES 01 SECONDS EAST A DISTANCE OF 132.70 FEET TO A POINT; THENCE RUN NORTH 24 DEGREES 34 MINUTES 36 SECONDS WEST A DISTANCE OF 25.80 FEET TO A POINT; THENCE RUN NORTH 65 DEGREES 25 MINUTES 24 SECONDS EAST A DISTANCE OF 29.20 FEET TO A POINT ON THE WESTERLY RIGHT-OF-WAY OF LA. HWY. 1077; THENCE RUN ALONG SAID RIGHT-OF-WAY SOUTH 24 DEGREES 34 MINUTES 36 SECONDS EAST A DISTANCE OF 330.65 FEET BACK TO THE POINT OF BEGINNING.

SAID PIECE OR PORTION OF GROUND CONTAINS 0.31 ACRES (13,610.17 SQ. FT.) MORE OR LESS.

DETAIL MAP OF STATE PROJECT NO. 852-03-0015

0.31 ACRES (13,610.17 SQ. FT.)
STATION 215+36.18 TO 218+34.56
ALONG LA. HWY. 1077 WEST RIGHT-OF-WAY LINE

St. Tammany Parish, Louisiana
for
ST. TAMMANY PARISH ROADWAY IMPROVEMENTS

Survey No. 2005392 WEST_001 Drawn by: SPH Scale: 1" = 80'
Date: DECEMBER, 2007 Revised:

JOHN E. BONNEAU & ASSOCIATES, INC.
Professional Land Surveyors Planners and Consultants

420 HWY. 1085, EXIT #57 • MADISONVILLE, LA. 70447
(985)845-1012 • (985)845-1013 • (985)845-1351 • FAX NO. (985)845-1778
www.JEBCOLandSurveying.com • e-mail: jebcol@bellsouth.net

This Survey is Certified True and Correct By

John E. Bonneau
Professional Land Surveyor
Registration No. 4423