



ORDINANCE CALENDAR NUMBER: 4100

ORDINANCE COUNCIL SERIES NO. 09-

PAGE 2 OF 2

MOVED FOR ADOPTION BY: \_\_\_\_\_, SECONDED BY: \_\_\_\_\_

WHEREUPON THIS ORDINANCE WAS SUBMITTED TO A VOTE AND RESULTED  
IN THE FOLLOWING:

YEAS:

NAYS:

ABSTAIN:

ABSENT:

THIS ORDINANCE WAS DECLARED ADOPTED AT A REGULAR MEETING OF THE  
PARISH COUNCIL ON THE \_\_\_\_\_ DAY OF \_\_\_\_\_ 2009; AND BECOMES  
ORDINANCE COUNCIL SERIES NO. 09-.

\_\_\_\_\_  
JERRY BINDER, COUNCIL CHAIRMAN

ATTEST:

\_\_\_\_\_  
THERESA FORD, COUNCIL CLERK

\_\_\_\_\_  
KEVIN DAVIS, PARISH PRESIDENT

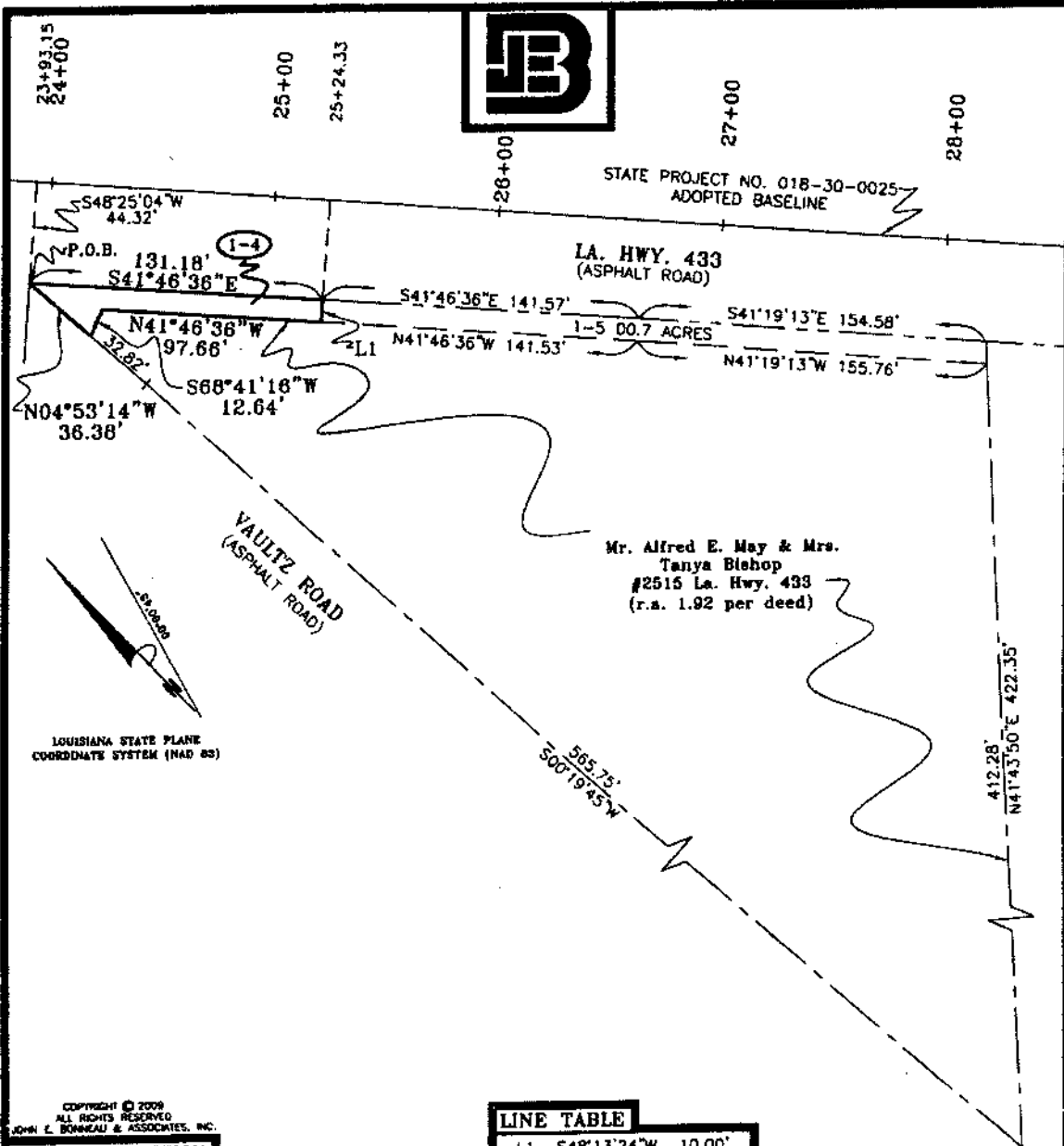
Published introduction: June 25, 2009

Published adoption on: \_\_\_\_\_, 2009

Delivered to Parish President: \_\_\_\_\_, 2009 @ \_\_\_\_\_

Returned to Council Clerk: \_\_\_\_\_, 2009 @ \_\_\_\_\_

Exhibit "A" Ordinance (agenda) NO. 7100



Copyright © 2009  
 All Rights Reserved  
 JOHN E. BONNEAU & ASSOCIATES, INC.

**LINE TABLE**

<b>LEGAL DESCRIPTION</b>	L1 S48°13'24"W 10.00'
--------------------------	-----------------------

A CERTAIN PIECE OR PORTION OF GROUND SITUATED IN SECTION 44, TOWNSHIP 9 SOUTH, RANGE 14 EAST, ST. TAMMANY PARISH, LOUISIANA, COMMENCING AT THE STATION 23+93.15 FROM STATE PROJECT NO. 018-30-0025 ADOPTED BASELINE RUN SOUTH 48 DEGREES 25 MINUTES 04 SECONDS WEST A DISTANCE OF 44.32 FEET TO A POINT ON THE SOUTHERLY RIGHT-OF-WAY LINE OF LA. HWY. 433 AND THE POINT OF BEGINNING.

FROM THE POINT OF BEGINNING, RUN ALONG SAID RIGHT-OF-WAY SOUTH 41 DEGREES 46 MINUTES 36 SECONDS EAST FOR A DISTANCE OF 131.18 FEET TO A POINT; THENCE LEAVING SAID RIGHT-OF-WAY RUN SOUTH 48 DEGREES 13 MINUTES 24 SECONDS WEST FOR A DISTANCE OF 10.00 FEET TO A POINT; THENCE RUN NORTH 41 DEGREES 46 MINUTES 36 SECONDS WEST FOR A DISTANCE OF 97.66 FEET TO A POINT; THENCE RUN SOUTH 68 DEGREES 41 MINUTES 16 SECONDS WEST FOR A DISTANCE OF 12.64 FEET TO A POINT ON THE NORTHEASTERLY RIGHT-OF-WAY OF VAULTZ ROAD; THENCE RUN ALONG SAID RIGHT-OF-WAY NORTH 04 DEGREES 53 MINUTES 14 SECONDS WEST FOR A DISTANCE OF 36.38 FEET BACK TO THE POINT OF BEGINNING.

SAID PIECE OR PORTION OF GROUND CONTAINS 0.03 ACRES (1,364.68 SQ. FT.) MORE OR LESS.

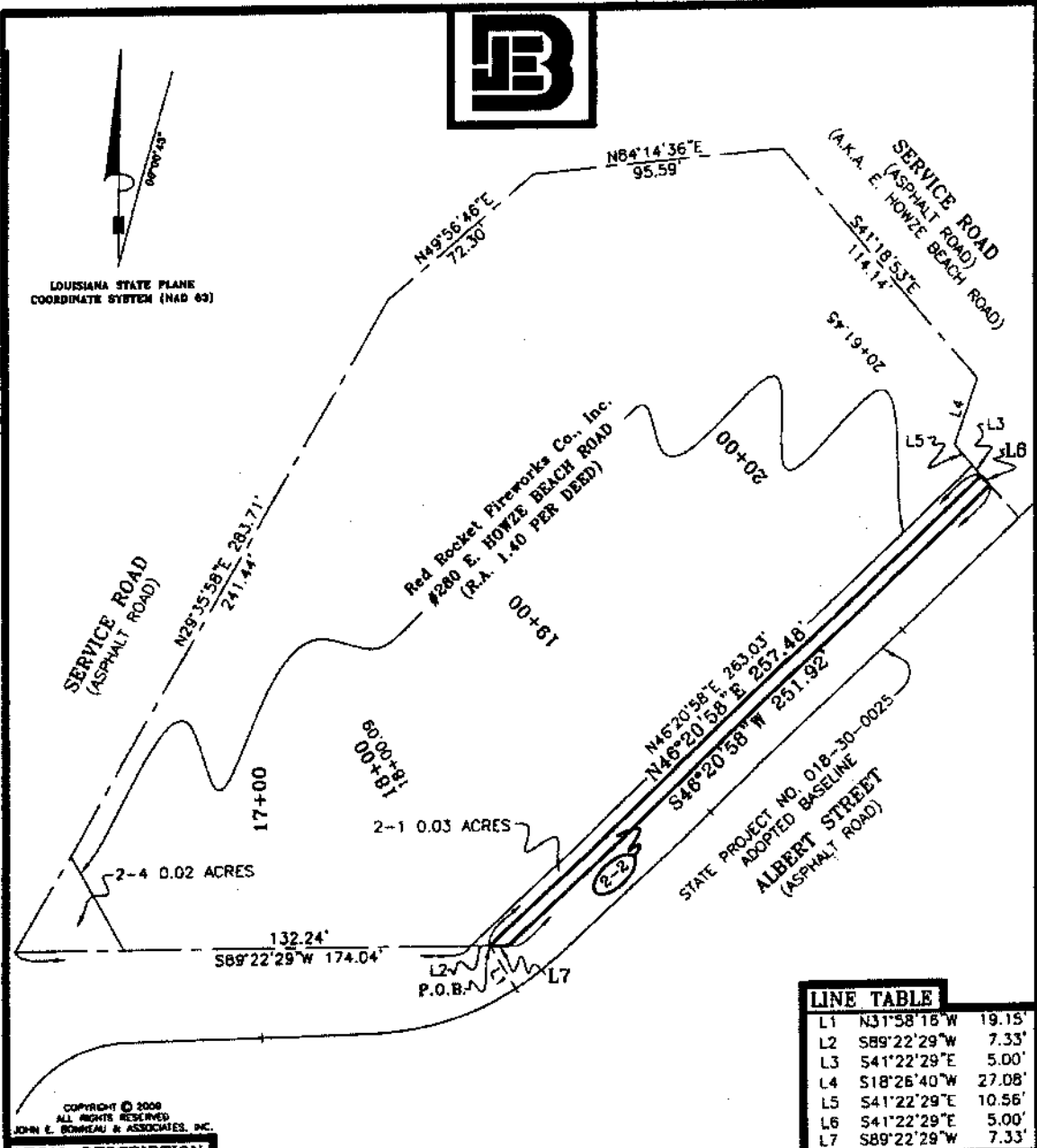
DETAIL MAP OF STATE PROJECT NO. 018-30-0025  
**0.03 ACRES (1,364.68 SQ. FT.)**  
**STATION 23+93.15 TO 25+24.33 ALONG LA. HWY. 433**  
**SOUTH RIGHT-OF-WAY LINE**  
 in  
 St. Tammany Parish, Louisiana  
 for  
**ST. TAMMANY PARISH ROADWAY IMPROVEMENTS &**  
**Mrs. Tanya Bishop, w/o & Mr. Alfred E. May**

Survey No. 2008489 PARCEL 1-4 Drawn by: SPH Scale: 1" = 60'  
 Date: MAY 27, 2009 Revised:

**JOHN E. BONNEAU & ASSOCIATES, INC.**  
 Professional Land Surveyors • Planners and Consultants  
 420 HWY. 1085, EXIT #57 • MADISONVILLE, LA. 70447  
 (985)845-1012 • (985)845-1013 • (985)845-1351 • FAX NO. (985)845-1778  
 www.JEBCOLandSurveying.com • e-mail: jebco1@bellsouth.net

This Survey is Certified True and Correct by  
**JOHN E. BONNEAU**  
 REG. No. 4423  
 REGISTERED PROFESSIONAL SURVEYOR  
 State of Louisiana  
 John E. Bonneau  
 Professional Land Surveyor  
 Registration No. 4423

Exhibit "A" (1) (2) (3) (4) (5) (6) (7) (8) (9) (10) (11) (12) (13) (14) (15) (16) (17) (18) (19) (20) (21) (22) (23) (24) (25) (26) (27) (28) (29) (30) (31) (32) (33) (34) (35) (36) (37) (38) (39) (40) (41) (42) (43) (44) (45) (46) (47) (48) (49) (50) (51) (52) (53) (54) (55) (56) (57) (58) (59) (60) (61) (62) (63) (64) (65) (66) (67) (68) (69) (70) (71) (72) (73) (74) (75) (76) (77) (78) (79) (80) (81) (82) (83) (84) (85) (86) (87) (88) (89) (90) (91) (92) (93) (94) (95) (96) (97) (98) (99) (100)



LINE TABLE	
L1	N31°58'18\" W 19.15'
L2	S89°22'29\" W 7.33'
L3	S41°22'29\" E 5.00'
L4	S18°26'40\" W 27.08'
L5	S41°22'29\" E 10.56'
L6	S41°22'29\" E 5.00'
L7	S89°22'29\" W 7.33'

COPYRIGHT © 2008  
ALL RIGHTS RESERVED  
JOHN E. BONNEAU & ASSOCIATES, INC.

**LEGAL DESCRIPTION**

A CERTAIN PIECE OR PORTION OF GROUND SITUATED IN SECTION 44, TOWNSHIP 9 SOUTH, RANGE 14 EAST, ST. TAMMANY PARISH, LOUISIANA, COMMENCING AT THE STATION 18+00.09 FROM STATE PROJECT NO. 018-30-0025 ADOPTED BASELINE RUN NORTH 31 DEGREES 58 MINUTES 18 SECONDS WEST A DISTANCE OF 19.15 FEET TO A POINT ON THE NORTHERLY RIGHT-OF-WAY LINE OF ALBERT STREET AND THE POINT OF BEGINNING.

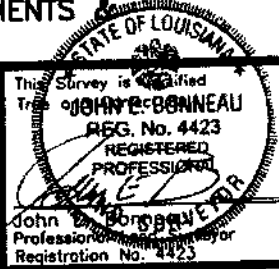
FROM THE POINT OF BEGINNING AND LEAVING SAID RIGHT-OF-WAY, RUN NORTH 46 DEGREES 20 MINUTES 58 SECONDS EAST FOR A DISTANCE OF 5.00 FEET TO A POINT; THENCE RUN SOUTH 41 DEGREES 22 MINUTES 29 SECONDS EAST FOR A DISTANCE OF 7.33 FEET TO A POINT; THENCE RUN SOUTH 46 DEGREES 20 MINUTES 58 SECONDS WEST FOR A DISTANCE OF 251.92 FEET TO A POINT; THENCE RUN SOUTH 89 DEGREES 22 MINUTES 29 SECONDS WEST FOR A DISTANCE OF 7.33 FEET BACK TO THE POINT OF BEGINNING.

SAID PIECE OR PORTION OF GROUND CONTAINS 0.03 ACRES (1,273.49 SQ. FT.) MORE OR LESS.

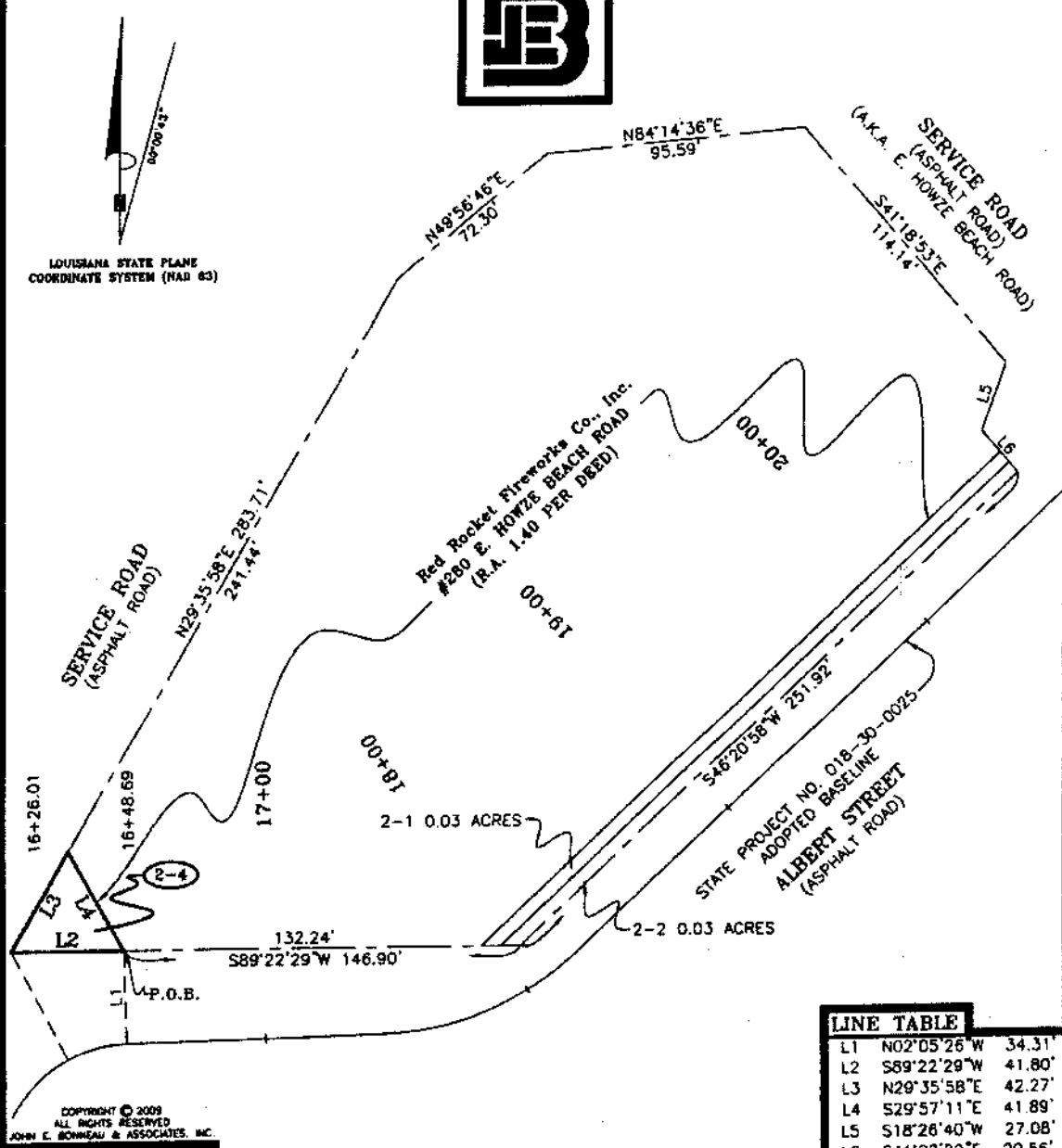
DETAIL MAP OF STATE PROJECT NO. 018-30-0025  
0.03 ACRES (1,273.49 SQ. FT.)  
STATION 18+00.09 TO 20+61.64 ALONG ALBERT STREET  
NORTH RIGHT-OF-WAY LINE  
in  
St. Tammany Parish, Louisiana  
for  
**ST. TAMMANY PARISH ROADWAY IMPROVEMENTS**  
**Red Rocket Fireworks Co., Inc.**

Survey No. 2008489 PARCEL 2-2 Drawn by: SPH Scale: 1" = 60'  
Date: MAY 27, 2009 Revised:

**JOHN E. BONNEAU & ASSOCIATES, INC.**  
Professional Land Surveyors • Planners and Consultants  
420 HWY. 1085, EXIT #57 • MADISONVILLE, LA. 70447  
(985)845-1012 • (985)845-1013 • (985)845-1351 • FAX NO. (985)845-1778  
www.JEBCOLandSurveying.com • e-mail: jebco1@bellsouth.net



Exp. of 1/1/11 (1) ...



COPYRIGHT © 2009  
ALL RIGHTS RESERVED  
JOHN E. BONNEAU & ASSOCIATES, INC.

LINE TABLE		
L1	N02°05'26"W	34.31'
L2	S89°22'29"W	41.80'
L3	N29°35'58"E	42.27'
L4	S29°57'11"E	41.89'
L5	S18°26'40"W	27.08'
L6	S41°22'29"E	20.56'

**LEGAL DESCRIPTION**

A CERTAIN PIECE OR PORTION OF GROUND SITUATED IN SECTION 44, TOWNSHIP 9 SOUTH, RANGE 14 EAST, ST. TAMMANY PARISH, LOUISIANA, COMMENCING AT THE STATION 16+48.69 FROM STATE PROJECT NO. 018-30-0025 ADOPTED BASELINE RUN NORTH 02 DEGREES 05 MINUTES 26 SECONDS WEST A DISTANCE OF 34.31 FEET TO A POINT ON THE NORTHERLY RIGHT-OF-WAY LINE OF ALBERT STREET AND THE POINT OF BEGINNING.

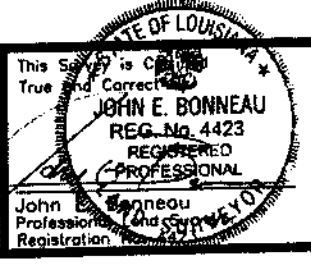
FROM THE POINT OF BEGINNING, CONTINUE ALONG SAID RIGHT-OF-WAY SOUTH 89 DEGREES 22 MINUTES 29 SECONDS WEST FOR A DISTANCE OF 41.80 FEET TO A POINT; THENCE LEAVING SAID RIGHT-OF-WAY, RUN NORTH 29 DEGREES 35 MINUTES 58 SECONDS EAST FOR A DISTANCE OF 42.27 FEET TO A POINT; THENCE RUN SOUTH 29 DEGREES 57 MINUTES 11 SECONDS EAST FOR A DISTANCE OF 41.89 FEET BACK TO THE POINT OF BEGINNING.

SAID PIECE OR PORTION OF GROUND CONTAINS 0.02 ACRES (763.23 SQ. FT.) MORE OR LESS.

DETAIL MAP OF STATE PROJECT NO. 018-30-0025  
0.02 ACRES (763.23 SQ. FT.)  
STATION 16+26.01 TO 16+48.69 ALONG ALBERT STREET  
NORTH RIGHT-OF-WAY LINE  
in  
St. Tammany Parish, Louisiana  
for  
**ST. TAMMANY PARISH ROADWAY IMPROVEMENTS &  
Red Rocket Fireworks Co., Inc.**

Survey No. 2008489 PARCEL 2-4 Drawn by: SPH Scale: 1" = 60'  
Date: MAY 27, 2009 Revised:

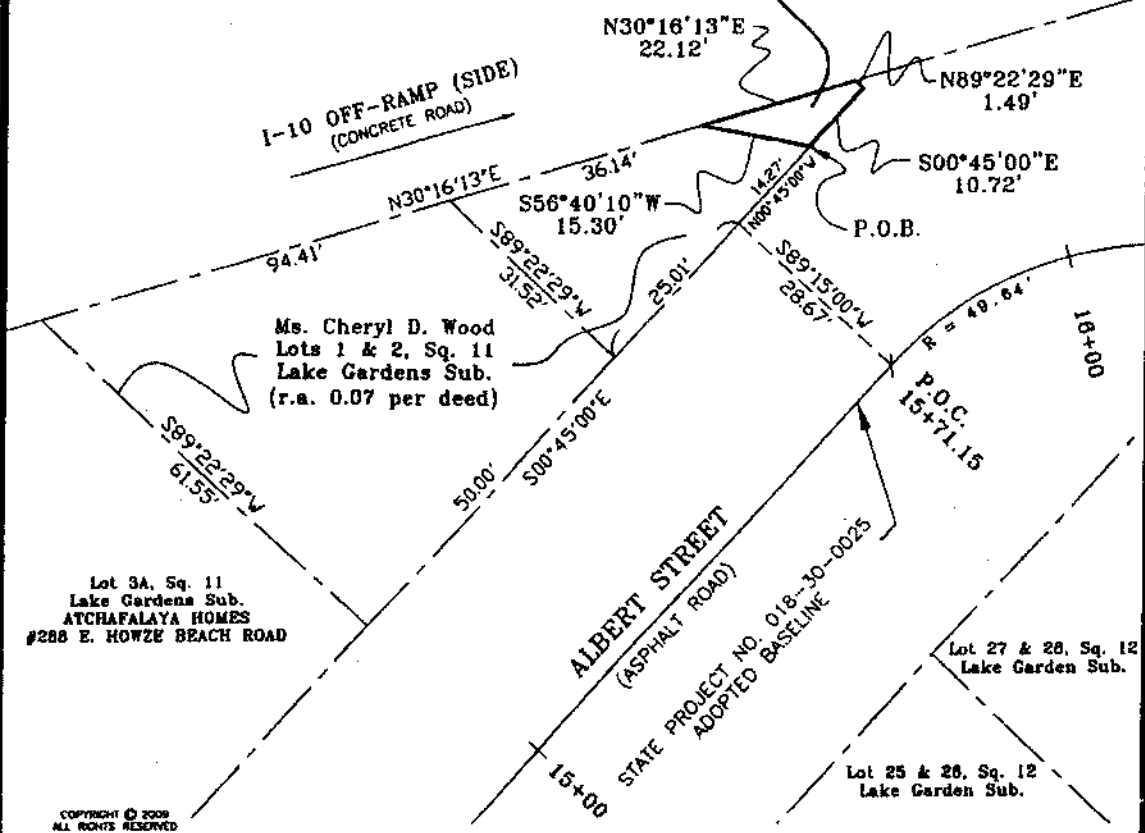
**JOHN E. BONNEAU & ASSOCIATES, INC.**  
Professional Land Surveyors • Planners and Consultants  
420 HWY. 1085, EXIT #57 • MADISONVILLE, LA. 70447  
(985)845-1012 • (985)845-1013 • (985)845-1351 • FAX NO. (985)845-1778  
www.JEBCOLandSurveying.com • e-mail: jebco1@bellsouth.net



Parcel 2-5 Under a Calendar No.



LOUISIANA STATE PLANE  
COORDINATE SYSTEM (NAD 83)



COPYRIGHT © 2009  
ALL RIGHTS RESERVED  
JOHN E. BONNEAU & ASSOCIATES, INC.

**LEGAL DESCRIPTION**

A CERTAIN PIECE OR PORTION OF GROUND SITUATED IN SECTION 44, TOWNSHIP 9 SOUTH, RANGE 14 EAST, ST. TAMMANY PARISH, LOUISIANA, COMMENCING AT THE STATION 15+71.15 FROM STATE PROJECT NO. 018-30-0025 ADOPTED BASELINE RUN SOUTH 89 DEGREES 15 MINUTES 00 SECONDS WEST A DISTANCE OF 28.67 FEET TO A POINT ON THE NORTHERLY RIGHT-OF-WAY LINE OF ALBERT STREET; THENCE RUN ALONG SAID RIGHT-OF-WAY NORTH 00 DEGREES 45 MINUTES 00 SECONDS WEST FOR A DISTANCE OF 14.27 FEET TO THE POINT OF BEGINNING.

FROM THE POINT OF BEGINNING, LEAVING SAID RIGHT-OF-WAY RUN SOUTH 56 DEGREES 40 MINUTES 10 SECONDS WEST FOR A DISTANCE OF 15.30 FEET TO A POINT ON THE SOUTHERLY RIGHT-OF-WAY OF INTERSTATE 10; THENCE RUN ALONG SAID RIGHT-OF-WAY NORTH 30 DEGREES 16 MINUTES 13 SECONDS EAST FOR A DISTANCE OF 22.12 FEET TO A POINT; THENCE LEAVING SAID RIGHT-OF-WAY RUN NORTH 89 DEGREES 22 MINUTES 29 SECONDS EAST FOR A DISTANCE OF 1.49 FEET TO A POINT ON THE NORTHERLY RIGHT-OF-WAY OF ALBERT STREET; THENCE RUN ALONG SAID RIGHT-OF-WAY SOUTH 00 DEGREES 45 MINUTES 00 SECONDS EAST FOR A DISTANCE OF 10.72 FEET BACK TO THE POINT OF BEGINNING.

SAID PIECE OR PORTION OF GROUND CONTAINS 0.00 ACRES (83.23 SQ. FT.) MORE OR LESS.

DETAIL MAP OF STATE PROJECT NO. 018-30-0025  
0.00 ACRES (83.23 SQ. FT.)  
STATION 15+71.15 TO 16+00.00 ALONG ALBERT STREET  
NORTH RIGHT-OF-WAY LINE  
in  
St. Tammany Parish, Louisiana  
for  
**ST. TAMMANY PARISH ROADWAY IMPROVEMENTS**  
Ms. Cheryl D. Wood

Survey No. 2008489 PARCEL 2-5 Drawn by: JBM Scale: 1" = 20'  
Date: MAY 27, 2009 Revised:

**JOHN E. BONNEAU & ASSOCIATES, INC.**  
Professional Land Surveyors • Planners and Consultants

420 HWY. 1085, EXIT #57 • MADISONVILLE, LA. 70447  
(985)845-1012 • (985)845-1013 • (985)845-1351 • FAX NO. (985)845-1778  
www.JEBCOLandSurveying.com • e-mail: jebco1@bellsouth.net

