

ST. TAMMANY PARISH COUNCIL

ORDINANCE

ORDINANCE CALENDAR NO. 4407 ORDINANCE COUNCIL SERIES NO. _____

COUNCIL SPONSOR: BINDER/DAVIS PROVIDED BY: President/Legal

INTRODUCED BY: MR. STEFANCIK SECONDED BY: MR. BURKHALTER

ON THE 7TH DAY OF OCTOBER, 2010

ORDINANCE TO AUTHORIZE THE PARISH OF ST. TAMMANY, THROUGH THE OFFICE OF THE PARISH PRESIDENT, TO PURCHASE, EXPROPRIATE OR OTHERWISE ACQUIRE CERTAIN PARCELS, RIGHTS OF WAY AND/OR SERVITUDES FOR THE HUNTWYCK VILLAGE DRAINAGE IMPROVEMENT PROJECT.

WHEREAS, the St. Tammany Parish Government desires to acquire certain immovable property (hereinafter referred to as "Property"); and

WHEREAS, there is a need and a public purpose for the acquisition of certain immovable property for drainage improvements in Huntwyck Village Subdivision; and

WHEREAS, the Parish of St. Tammany hereby desires to acquire the Property, rights of way and/or servitudes and authorizes the Office of the Parish President to do whatever is necessary to enter into negotiations and acquire said Property, servitudes and/or rights of way.

THE PARISH OF ST. TAMMANY HEREBY ORDAINS to authorize the Parish of St. Tammany, to acquire by purchase, donation or expropriation all that certain parcel of ground described in Exhibit "A" attached hereto; and

BE IF FURTHER RESOLVED that pursuant to all applicable provision of law, the Office of the Parish President is directed and authorized to do whatever is necessary to acquire the Property, servitudes and/or rights of way; and

THAT, the Office of the Parish President is authorized and instructed to proceed with the acquisition of the Property, servitudes and/or rights of way in a timely and orderly matter; and

THAT, the Office of the Parish President is authorized to exercise its discretion in acquiring the Property, servitudes and /or rights of way, together with all agreements and all transactions necessary to carry out the intent of this Ordinance; and

THAT, if purchased, the purchase price shall not exceed the fair market value of the Property as evidenced by an appraisal obtained or supplied to the Parish plus fees and costs; and

THAT, any and all actions previously taken by the Office of the Parish President in furtherance of the actions contemplated herein are ratified and accepted accordingly.

REPEAL: All Ordinances or parts of Ordinance in conflict herewith are hereby repealed.

ORDINANCE CALENDAR NO. 4407

ORDINANCE COUNCIL SERIES NO. _____

PAGE 2 OF 2

SEVERABILITY: If any provision of this Ordinance shall be held to be invalid, such invalidity shall not affect other provisions herein which can be given effect without the invalid provision and to this end the provisions of this Ordinance are hereby declared to be severable.

EFFECTIVE DATE: This Ordinance shall become effective immediately upon final adoption.

MOVED FOR ADOPTION BY: _____, SECONDED BY: _____

WHEREUPON THIS ORDINANCE WAS SUBMITTED TO A VOTE AND RESULTED IN THE FOLLOWING:

YEAS:

NAYS:

ABSTAIN:

ABSENT:

THIS ORDINANCE WAS DECLARED ADOPTED AT A REGULAR MEETING OF THE PARISH COUNCIL ON THE _____ DAY OF _____ 2010; AND BECOMES ORDINANCE COUNCIL SERIES NO. _____.

JERRY BINDER, COUNCIL CHAIRMAN

ATTEST:

THERESA FORD, COUNCIL CLERK

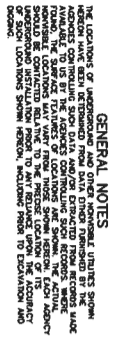
KEVIN DAVIS, PARISH PRESIDENT

Published introduction: SEPTEMBER 30, 2010

Published adoption on: _____, 2010

Delivered to Parish President: _____, 2010 @ _____

Returned to Council Clerk: _____, 2010 @ _____



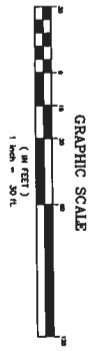
The Surveillance and Restriction shown on this survey are limited to Union set forth in the description furnished us and there are no other restrictions shown thereon. Surveillance and Restrictions are shown hereon. The surveyor has made no title search or public record search in compiling the data for this survey.

I have consulted the Federal Hazardous Waste Agency and the Environmental Protection Agency and found this property is not on a Special Flood Hazard Area.

FIELD NOTE: C

COMPLAINT: P.M.D. NO. 2230004-020 E & 22520004-015 C

- SURVEY REFERENCE:**
1. SECTION OF 13,415 ACRES OF LAND FOR REPARATION OF LOT 8 OF THE HUNTERS HILLS TRACT, HUNTERS HILLS ESTATE, BY JOHN H. BARNES, DATED NOVEMBER 26, 2002.
 2. TOWNSHIP PLAN FOR TOWNSHIP 3 SOUTH - RANGE 14 EAST, GREENSBORO TOWNSHIP, GREENSBORO COUNTY, NORTH CAROLINA, DATED FEBRUARY 14, 1983.
 3. RECORDS ARE BASED ON STATIC GPS OBSERVATIONS FROM COORS STATION "CONVENTION", COORS STATION "HOLY", AND COORS STATION "TIMBERS". THE HORIZONTAL COORDINATE USED IS THE COLOMBIA STATE PLATE COORDINATE.



2	ADDED PARCEL INSTRUMENT NUMBERS	01-18-10	J.S.T.	
1	ADDED SHEET 5 TO THE SHEET SET	11-13-09	J.S.T.	
MARK	DESCRIPTION	DATE	BY	CHK'D

HUNTWYCK DRAINAGE CANAL
SERVITUDE PARCEL MAP
SECTION 38, T 9 S - R 14 E,
GREENSBURG LAND DISTRICT
ST. TAMMANY PARISH, LOUISIANA

I certify that this plat represents the actual ground survey made by me or under my direction, and it does not conform to the requirements for the Minimum Standards for Property Boundary Surveys as found in Louisiana Administrative Code Title 48, Part 4, Chapter 23, for a Class "C" survey.

DIGITAL ENGINEERING AND IMAGING, INC.

BFM
CORPORATION, L.L.C.
Professional Land Surveyors

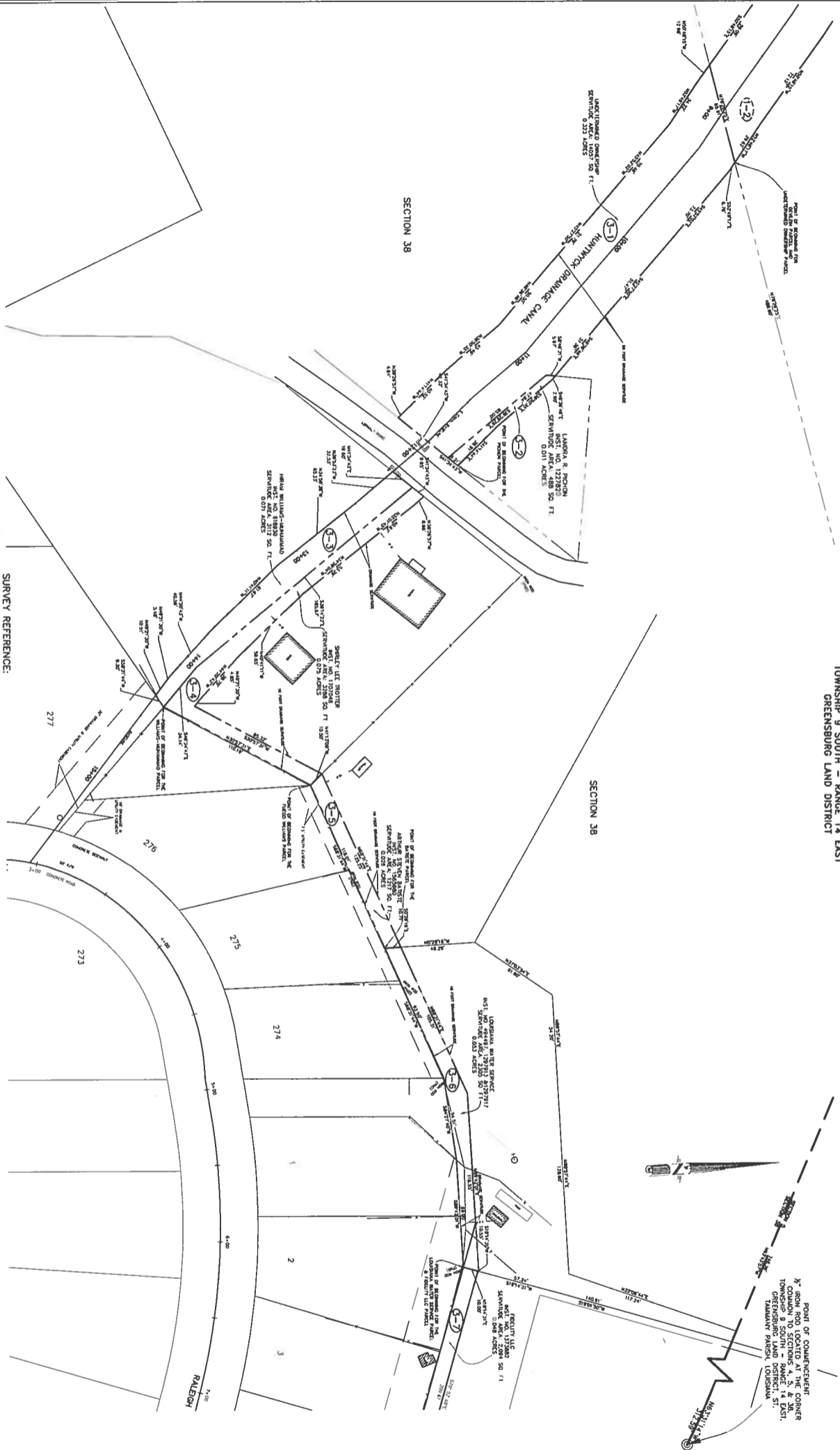
534 WILLIAMS BOULEVARD
E-mail: btfmcorp@btfmcorporation.com
(504) 448-8800
Fax No. (504) 447-0085
CITY OF KENNER
JEFFERSON PARISH, LOUISIANA, 70062

John A. Ferguson
REGISTERED PROFESSIONAL LAND SURVEYOR



EXHIBIT "A" CONTINUED

SECTION 38
TOWNSHIP 9 SOUTH - RANGE 14 EAST
GREENSBURG LAND DISTRICT



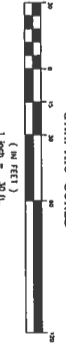
GENERAL NOTES

THE LOCATION OF UNDERGROUND AND OTHER HORIZONTAL UTILITIES SHOWN ON THIS MAP ARE BASED ON RECORDS OF THE PUBLIC UTILITIES COMMISSION. THE LOCATION OF UNDERGROUND UTILITIES SHOWN ON THIS MAP ARE BASED ON RECORDS OF THE PUBLIC UTILITIES COMMISSION. THE LOCATION OF UNDERGROUND UTILITIES SHOWN ON THIS MAP ARE BASED ON RECORDS OF THE PUBLIC UTILITIES COMMISSION.

SURVEY REFERENCE:

1. SURVEY OF A CERTAIN PARCEL OF LAND IN SECTION 38, T 9 S - R 14 E, ST. TAMMANY PARISH, LOUISIANA, BY RAY N. BORDEN, DATED APRIL, 1968, CACT.
2. SURVEY MAP OF TRACTS 1, 2 & 3, SITUATED IN SECTION 38, T 9 S, R 14 E, ST. TAMMANY PARISH, LOUISIANA, BY JOHN E. BORDEN, DATED FEBRUARY 26, 2000.
3. SURVEY MAP OF A CERTAIN PARCEL OF LAND SITUATED IN SECTION 38, T 9 S, R 14 E, ST. TAMMANY PARISH, LOUISIANA, BY JOHN E. BORDEN, DATED APRIL 17, 2006.
4. SURVEY MAP OF A CERTAIN PARCEL OF LAND SITUATED IN SECTION 38, T 9 S, R 14 E, ST. TAMMANY PARISH, LOUISIANA, BY JOHN E. BORDEN, DATED JUNE 20, 1978.
5. SURVEY OF HUNTWYCK DRAINAGE CANAL, BY BORDEN, DATED APRIL, 1968.
6. SURVEY OF HUNTWYCK DRAINAGE CANAL, BY BORDEN, DATED APRIL, 1968.
7. RECORDS ARE BASED ON STATE GPS OBSERVATIONS FROM GPS STATION HUNTWYCK, STATION NO. 1, AND GPS STATION HUNTWYCK, STATION NO. 2, BOTH SITUATED IN SECTION 38, T 9 S, R 14 E, ST. TAMMANY PARISH, LOUISIANA, DATED 1998 & 1999.

GRAPHIC SCALE



HUNTWYCK DRAINAGE CANAL
SERVITUDE PARCEL MAP
SECTION 38, T 9 S - R 14 E
GREENSBURG LAND DISTRICT
ST. TAMMANY PARISH, LOUISIANA

B.C.M.
CORPORATION, L.L.C.
Professional Land Surveyors
534 WILLIAM BOULEVARD
SUITE 200
GREENSBURG, MISSISSIPPI 39305
TEL: 601-483-8800
FAX: 601-483-8805
CITY OF GREENSBURG
ATTENTION: PUBLIC WORKS DEPARTMENT



John S. Hecard
REGISTERED PROFESSIONAL LAND SURVEYOR

I certify that this plat represents an actual ground survey made by me or under my direction, and it does not conform to the requirements for the minimum Standards for Property Boundary Surveys as stated in Louisiana Administrative Code Title 48, Part 111, Chapter 20.

DIGITAL ENGINEERING AND IMAGING, INC.

NO.	DESCRIPTION	DATE	BY	CHK'D
1	ADDED SHEET C TO THE SHEET SET AND MODIFIED THE LOUISIANA WATER SERVICE PARCEL.	11-11-08	JST	
2	ADDED PARCEL INSTRUMENT NUMBERS.	09-18-10	JST	
3	CHANGED LANDOWNER NAMES, WILLIAMS TO TROTTER AND BARTIS TO ARTHUR STEVEN BARTIS.	03-12-10	JST	
4	ADDED STRUCTURES CLOSE TO THE REQUIRED PARCELS.	03-12-10	JST	

SCALE: 1" = 20'

DRAWN BY: K.A.B.

CHECKED BY: J.S.T.

PROJECT NO. 0056

SHEET 3 OF 5

EXHIBIT "A" CONTINUED

SECTION 38
TOWNSHIP 9 SOUTH - RANGE 14 EAST
GREENSBURG LAND DISTRICT



GENERAL NOTES

THE LOCATION OF UNDERGROUND UTILITIES SHOWN HEREON HAVE BEEN DETERMINED FROM DATA FURNISHED BY THE UTILITY COMPANIES. THE LOCATION OF UNDERGROUND UTILITIES SHOWN HEREON ARE NOT TO BE CONSIDERED AS A GUARANTEE OF THE LOCATION OF SUCH UTILITIES. THE LOCATION OF SUCH UTILITIES SHOWN HEREON, INCLUDING PRIOR TO EXCAVATION AND REPAIR.

SURVEY REFERENCE:

1. SURVEY OF A CERTAIN PARCEL OF LAND IN SECTION 38, T. 9 S., R. 14 E., S. 17 N. GREENSBURG LAND DISTRICT, BY JOHN M. BORDEN, DATED JAN. 1984, EXACT DATE IS UNRECORDED.
2. SURVEY OF A CERTAIN PARCEL OF LAND IN SECTION 38, T. 9 S., R. 14 E., S. 17 N. GREENSBURG LAND DISTRICT, BY JOHN M. BORDEN, DATED FEBRUARY 25, 2000.
3. A 7.575 ACRE PARCEL, KNOWN AS PARCEL B, LOCATED NEAR THE CORNER OF SECTION 38, T. 9 S., R. 14 E., S. 17 N. GREENSBURG LAND DISTRICT, BY JOHN M. BORDEN, DATED JAN. 17, 2008.
4. SURVEY OF A CERTAIN PARCEL OF LAND SITUATED IN SECTION 38, T. 9 S., R. 14 E., S. 17 N. GREENSBURG LAND DISTRICT, BY JOHN M. BORDEN, DATED JAN. 20, 1979.
5. SURVEY OF HUNTWICK VALLEY PHASE IV, BY BORDEN ENGINEERING AND DATED MARCH 12, 1978.
6. SURVEY OF HUNTWICK VALLEY PHASE IV, BY BORDEN ENGINEERING AND DATED MARCH 12, 1978.
7. REVISIONS ARE BASED ON STAKE ORS OBSERVATIONS FROM CORNER STATION 7, CORNER STATION 100, AND CORNER STATION 100, THE SOUTH 100' AND 100'.

The boundaries and dimensions shown on this map are based on the survey of the land shown on the map. The boundaries and dimensions are shown on the map. The boundaries and dimensions are shown on the map. The boundaries and dimensions are shown on the map.

COMMUNITY PLANNING, LTD. 222504015 & 222504015 C
APR 21/2008/PHASE IV, APR 21, 1999 & APR 21, 1991



HUNTWICK DRAINAGE CANAL
SERVITUDE PARCEL MAP
SECTION 38, T 9 S - R 14 E,
GREENSBURG LAND DISTRICT
ST. TAMMANY PARISH, LOUISIANA

NO.	DESCRIPTION	DATE	BY	CHK'D
1	ADDED PARCEL INSTRUMENT NUMBERS	01-10-10	J.S.T.	
2	ADDED SHEET 5 TO THE SHEET SET	11-12-09	J.S.T.	

B&M
CORPORATION, L.L.C.
Professional Land Surveyors
534 WILLIAMS BOULEVARD
CITY OF KENNER, LOUISIANA 70062
REG. NO. 4633
EXPIRATION DATE 12/31/2011

John A. Tugade
REGISTERED PROFESSIONAL LAND SURVEYOR



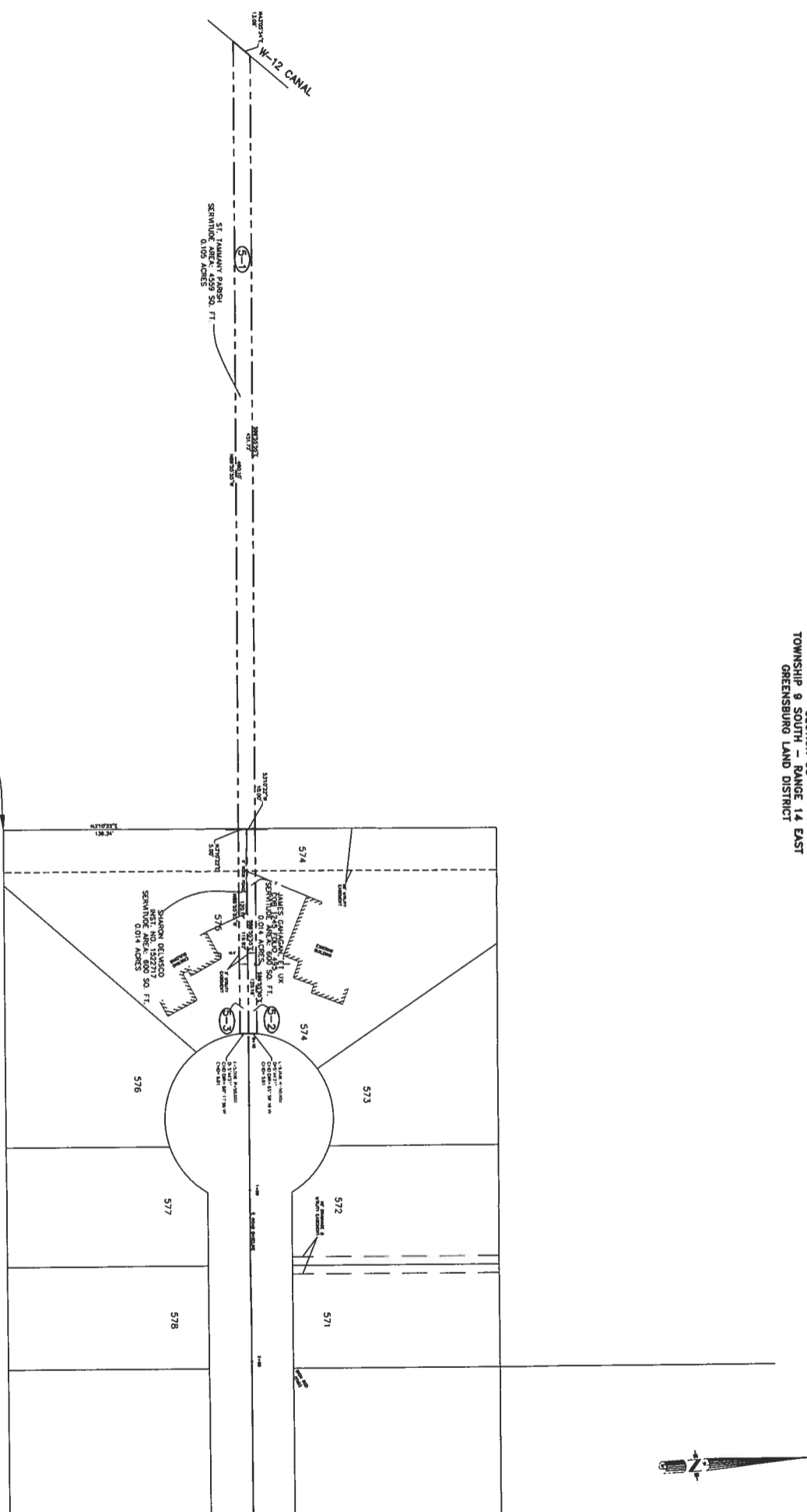
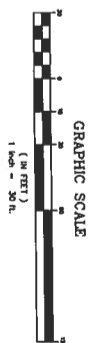
SECTION 38
TOWNSHIP 9 SOUTH - RANGE 14 EAST
GREENSBURG LAND DISTRICT

GENERAL NOTES

The Surveillance and Restrictions shown on this survey are limited to those set forth in the Federal Insecticide, Fungicide, and Rodenticide Act (FIFRA) and are not intended to be a representation that all species, varieties, and populations of the listed insects, fungi, and rodents are present in the survey area. The surveyor is not responsible for the accuracy or completeness of the information provided in this survey. The surveyor is not responsible for the accuracy or completeness of the information provided in this survey.

SURVEY REFERENCE:

1. PARCEL OF 13.413 ACRES OF LAND FOR RE-PARTITION OF LOT 6 OF THE PARTITION OF THE JOHN FERNANDEZ ESTATE, BY SEYM M. BARKER, DATED NOVEMBER 20, 2007.
2. TENNESSEE PLAT FOR TENNESSEE A SOUTH RANGE, LA EAST GEOGRAPHIC LAND DISTRICT, LOUISIANA BY A.M. BOYD DATED FEBRUARY 14, 1982.
3. READINGS ARE BASED ON STAIR CASE OBSERVATIONS FROM COGS STATION "CONVENTION", COGS STATION "WALL", AND COGS STATION "TIDES", THE HORIZONTAL DATUM USED IS THE LOUISIANA STATE PLANT COORDINATE SYSTEM, SOUTH ZONE, NAD 1983.



4	ADDED STRUCTURES CLOSE TO THE REQUIRED PARCELS	03-12-10	J.S.T.	
3	ADDED PARCEL INSTRUMENT NUMBERS	01-18-10	J.S.T.	
2	RENUMBERED SHEETS 4 & 5	01-18-10	J.S.T.	
1	ADDED SHEET 3 TO THE SHEET SET	11-13-08	J.S.T.	
MARK	DESCRIPTION	DATE	BY	CHK'D

**HUNTWYCK DRAINAGE CANAL
SERVITUDE PARCEL MAP
SECTION 38, T 9 S - R 14 E,
GREENSBURG LAND DISTRICT
ST. TAMMANY PARISH, LOUISIANA**

BFM
CORPORATION, LLC.
Professional Land Surveyors
534 WILLIAMS BOULEVARD
E-mail: bmcarr@bfmcorporation.com
(304) 468-8000
Fax No. (504) 467-0085
CITY OF KENNER
JEFFERSON PARISH, LOUISIANA, 70001

John S. Fitzgerald
REGISTERED PROFESSIONAL LAND SURVEYOR



EXHIBIT "A" CONTINUED

SECTION 38
TOWNSHIP 9 SOUTH - RANGE 14 EAST
GREENSBURG LAND DISTRICT

ST. TAMMANY PARISH
INST. NO. 1632524
SERVITUDE AREA: 10018 SQ. FT.
0.230 ACRES

ST. TAMMANY PARISH

SECTION 38

SECTION 38

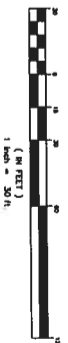
GENERAL NOTES

THE LOCATIONS OF UNDERGROUND AND OTHER NONVISIBLE UTILITIES SHOWN ON THE RECORDS OF THE BUREAU OF PUBLIC WORKS OR OTHER AGENCIES RESPONSIBLE FOR THE MAINTENANCE OF SUCH UTILITIES ARE NOT GUARANTEED BY THE AGENCIES. INFORMATION MADE AVAILABLE TO THE AGENCIES CONTROLLING SUCH RECORDS, WHETHER FROM THE SURFACE FEATURES OF LOCATIONS ARE SHOWN, THE ACTUAL NONVISIBLE LOCATIONS MAY VARY FROM THOSE SHOWN HEREON. NO LIABILITY SHOULD BE CONTACTED RELATIVE TO THE PRECISE LOCATION OF ITS UNDERGROUND INSTALLATION PRIOR TO ANY RELIANCE UPON THE ACCURACY OF SUCH LOCATIONS SHOWN HEREON, INCLUDING PRIOR TO EXCAVATION AND/OR

SURVEY REFERENCE:

1. SECTION OF 13.613 ACRES OF LAND FOR RE-PARTITION OF LOT 8 OF "H. PARTITION OF THE JOHN TROBESMAN ESTATE, BY JOHN M. ROBESMAN, DATED NOVEMBER 20, 1900."
2. TOWNSHIP PLAT FOR TOWNSHIP 9 SOUTH - RANGE 14 EAST, GREENSBURG LAND DISTRICT, LOUISIANA BY W.M. BOWD DATED FEBRUARY 14, 1932.
3. RECORDS ARE BASED ON STAVE GCS OBSERVATIONS AND GCS STATION "CONNECTION," GCS STATION "N4," AND GCS STATION "SIDINGS." THE COORDINATE DATA USED IS THE LOUISIANA STATE PLANE COORDINATE SYSTEM, SOUTH ZONE, YEAR 1983.

GRAPHIC SCALE



2	ADDED PARCEL INSTRUMENT NUMBERS.	01-18-10	J.S.T.
1	ADDED SHEET 5 TO THE SHEET SET	11-15-09	J.S.T.
MARK	DESCRIPTION	DATE	BY
	"DRAWING ROOM"		CHG

**HUNTWYCK DRAINAGE CANAL
SERVITUDE PARCEL MAP
SECTION 38, T 9 S - R 14 E,
GREENSBURG LAND DISTRICT
ST. TAMMANY PARISH, LOUISIANA**

BFM
CORPORATION, L.L.C.
Professional Land Surveyors

534 WILLIAMS BOULEVARD
E-mail: stnarry@bfcorporation.com
(504) 445-3000
Fax: (504) 447-0055
CITY OF KIDDER
JEFFERSON PARISH, LOUISIANA, 70067

John S. Teyarden
REGISTERED PROFESSIONAL LAND SURVEYOR



EXHIBIT "A" CONTINUED

DESCRIPTION OF PARCEL 1-1

THE HUNTWYCK DRAINAGE CANAL SERVITUDE LOCATED IN SECTION 38, TOWNSHIP 9 SOUTH - RANGE 14 EAST, GREENSBURG LAND DISTRICT, ST. TAMMANY PARISH, LOUISIANA

DESCRIPTION OF A 0.230 ACRE PARCEL OF LAND LOCATED IN THE PARISH OF ST. TAMMANY, STATE OF LOUISIANA IN ACCORDANCE WITH A PLAN ENTITLED HUNTWYCK DRAINAGE CANAL SERVITUDE PARCEL MAP SHEET 1, DATED MAY 06, 2009 AND REVISED JANUARY 18, 2010.

SAID 0.230 ACRE PARCEL BEING MORE FULLY DESCRIBED AS FOLLOWS:

COMMENCING AT AN 1/2" IRON ROD FOUND, SAID POINT BEING THE CORNER COMMON TO SECTIONS 4, 5 & 38, TOWNSHIP 9 SOUTH - RANGE 14 EAST, GREENSBURG LAND DISTRICT, ST. TAMMANY PARISH, LOUISIANA, THENCE NORTH 63°31'14" WEST FOR A DISTANCE OF 312.59 FEET TO A POINT AND CORNER; THENCE NORTH 63°43'57" WEST FOR A DISTANCE OF 748.36 FEET TO A POINT AND CORNER; THENCE NORTH 63°48'35"W FOR A DISTANCE OF 1035.20 FEET TO A POINT AND CORNER; THENCE SOUTH 40°53'16" WEST FOR A DISTANCE OF 124.30 FEET TO THE POINT OF BEGINNING.

THENCE SOUTH 40°53'16" WEST FOR A DISTANCE OF 54.65 FEET TO A POINT AND CORNER;

THENCE NORTH 25°18'43" WEST FOR A DISTANCE OF 54.85 FEET TO A POINT AND CORNER;

THENCE NORTH 30°13'41" WEST FOR A DISTANCE OF 39.57 FEET TO A POINT AND CORNER;

THENCE NORTH 40°28'10" WEST FOR A DISTANCE OF 77.75 FEET TO A POINT AND CORNER;

THENCE NORTH 51°38'38" WEST FOR A DISTANCE OF 27.69 FEET TO A POINT AND CORNER;

THENCE NORTH 38°21'22" EAST FOR A DISTANCE OF 50.00 FEET TO A POINT AND CORNER;

THENCE SOUTH 51°38'38" EAST FOR A DISTANCE OF 32.58 FEET TO A POINT AND CORNER;

THENCE SOUTH 40°28'10" EAST FOR A DISTANCE OF 87.12 FEET TO A POINT AND CORNER;

EXHIBIT "A" CONTINUED

THENCE SOUTH 30°13'41" EAST FOR A DISTANCE OF 46.20 FEET TO A POINT AND CORNER;

THENCE SOUTH 25°18'43" EAST FOR A DISTANCE OF 34.94 FEET TO THE **POINT OF BEGINNING.**

CONTAINING: 10,018 SQUARE FEET OR 0.230 ACRES OF LAND, MORE OR LESS.

EXHIBIT "A" CONTINUED

**DESCRIPTION OF PARCEL 1-2
THE HUNTWYCK DRAINAGE CANAL SERVITUDE LOCATED IN
SECTION 38, TOWNSHIP 9 SOUTH - RANGE 14 EAST,
GREENSBURG LAND DISTRICT,
ST. TAMMANY PARISH, LOUISIANA**

DESCRIPTION OF A 0.798 ACRE PARCEL OF LAND LOCATED PARISH OF ST. TAMMANY, STATE OF LOUISIANA IN ACCORDANCE WITH A PLAN ENTITLED HUNTWYCK DRAINAGE CANAL SERVITUDE PARCEL MAP SHEETS 1 AND 2, DATED MAY 6, 2009 AND REVISED JANUARY 18, 2010.

SAID 0.798 ACRE PARCEL BEING MORE FULLY DESCRIBED AS FOLLOWS:

COMMENCING AT AN 1/2" IRON ROD FOUND, SAID POINT BEING THE CORNER COMMON TO SECTIONS 4, 5 & 38, TOWNSHIP 9 SOUTH - RANGE 14 EAST, GREENSBURG LAND DISTRICT, ST. TAMMANY PARISH, LOUISIANA, THENCE NORTH 63°31'14" WEST FOR A DISTANCE OF 312.59 FEET TO A POINT AND CORNER; THENCE NORTH 63°43'57" WEST FOR A DISTANCE OF 748.36 FEET TO A POINT AND CORNER; THENCE SOUTH 78°26'25" WEST FOR A DISTANCE OF 488.80 FEET TO THE POINT OF BEGINNING.

THENCE SOUTH 78°26'25" WEST FOR A DISTANCE OF 65.91 FEET TO A POINT AND CORNER;

THENCE NORTH 50°48'15" WEST FOR A DISTANCE OF 59.09 FEET TO A POINT AND CORNER;

THENCE NORTH 52°57'36" WEST FOR A DISTANCE OF 53.39 FEET TO A POINT AND CORNER;

THENCE NORTH 52°50'22" WEST FOR A DISTANCE OF 121.39 FEET TO A POINT AND CORNER;

THENCE NORTH 52°52'16" WEST FOR A DISTANCE OF 42.52 FEET TO A POINT AND CORNER;

THENCE NORTH 52°02'16" WEST FOR A DISTANCE OF 34.85 FEET TO A POINT AND CORNER;

THENCE NORTH 53°38'16" WEST FOR A DISTANCE OF 37.22 FEET TO A POINT AND CORNER;

THENCE NORTH 59°07'07" WEST FOR A DISTANCE OF 70.25 FEET TO A POINT AND CORNER;

EXHIBIT "A" CONTINUED

THENCE NORTH 60°19'23" WEST FOR A DISTANCE OF 51.47 FEET TO A POINT AND CORNER;

THENCE NORTH 58°03'51" WEST FOR A DISTANCE OF 48.81 FEET TO A POINT AND CORNER;

THENCE NORTH 38°05'36" WEST FOR A DISTANCE OF 53.43 FEET TO A POINT AND CORNER;

THENCE NORTH 27°49'31" WEST FOR A DISTANCE OF 71.90 FEET TO A POINT AND CORNER;

THENCE NORTH 25°18'43" WEST FOR A DISTANCE OF 30.72 FEET TO A POINT AND CORNER;

THENCE NORTH 40°53'16" EAST FOR A DISTANCE OF 54.65 FEET TO A POINT AND CORNER;

THENCE SOUTH 25°18'43" EAST FOR A DISTANCE OF 51.67 FEET TO A POINT AND CORNER;

THENCE SOUTH 27°49'31" EAST FOR A DISTANCE OF 66.32 FEET TO A POINT AND CORNER;

THENCE SOUTH 38°05'36" EAST FOR A DISTANCE OF 40.14 FEET TO A POINT AND CORNER;

THENCE SOUTH 58°03'51" EAST FOR A DISTANCE OF 39.02 FEET TO A POINT AND CORNER;

THENCE SOUTH 60°19'23" EAST FOR A DISTANCE OF 51.01 FEET TO A POINT AND CORNER;

THENCE SOUTH 59°07'07" EAST FOR A DISTANCE OF 73.17 FEET TO A POINT AND CORNER;

THENCE SOUTH 53°38'16" EAST FOR A DISTANCE OF 40.31 FEET TO A POINT AND CORNER;

THENCE SOUTH 52°02'16" EAST FOR A DISTANCE OF 35.18 FEET TO A POINT AND CORNER;

THENCE SOUTH 52°52'16" EAST FOR A DISTANCE OF 42.17 FEET TO A POINT AND CORNER;

EXHIBIT "A" CONTINUED

THENCE SOUTH 52°50'22" EAST FOR A DISTANCE OF 121.35 FEET TO A POINT AND CORNER;

THENCE SOUTH 52°57'36" EAST FOR A DISTANCE OF 54.28 FEET TO A POINT AND CORNER;

THENCE SOUTH 50°48'15" EAST FOR A DISTANCE OF 72.13 FEET TO A POINT AND CORNER;

THENCE SOUTH 52°49'17" EAST FOR A DISTANCE OF 29.62 FEET TO THE **POINT OF BEGINNING**.

CONTAINING: 34,778 SQUARE FEET OR 0.798 ACRES OF LAND, MORE OR LESS.

EXHIBIT "A" CONTINUED

**DESCRIPTION OF PARCEL 3-1
THE HUNTWYCK DRAINAGE CANAL SERVITUDE LOCATED IN SECTION
38, TOWNSHIP 9 SOUTH - RANGE 14 EAST,
GREENSBURG LAND DISTRICT,
ST. TAMMANY PARISH, LOUISIANA**

DESCRIPTION OF A 0.323 ACRE PARCEL OF LAND LOCATED IN THE PARISH OF ST. TAMMANY, STATE OF LOUISIANA IN ACCORDANCE WITH A PLAN ENTITLED HUNTWYCK DRAINAGE CANAL SERVITUDE PARCEL MAP, SHEET 3, DATED MAY 06, 2009 AND REVISED JANUARY 18, 2010.

SAID 0.323 ACRE PARCEL BEING MORE FULLY DESCRIBED AS FOLLOWS:

COMMENCING AT AN 1/2" IRON ROD FOUND, SAID POINT BEING THE CORNER COMMON TO SECTIONS 4, 5 & 38, TOWNSHIP 9 SOUTH - RANGE 14 EAST, GREENSBURG LAND DISTRICT, ST. TAMMANY PARISH, LOUISIANA, THENCE NORTH 63°31'14" WEST FOR A DISTANCE OF 312.59 FEET TO A POINT AND CORNER; THENCE NORTH 63°43'57" WEST FOR A DISTANCE OF 748.36 FEET TO A POINT AND CORNER; THENCE SOUTH 78°26'25" WEST FOR A DISTANCE OF 488.80 FEET TO THE POINT OF BEGINNING.

THENCE SOUTH 52°49'17" EAST FOR A DISTANCE OF 6.76 FEET TO A POINT AND CORNER;

THENCE SOUTH 45°52'02" EAST FOR A DISTANCE OF 73.70 FEET TO A POINT AND CORNER;

THENCE SOUTH 45°27'50" EAST FOR A DISTANCE OF 51.47 FEET TO A POINT AND CORNER;

THENCE SOUTH 46°36'46" EAST FOR A DISTANCE OF 51.36 FEET TO A POINT AND CORNER;

THENCE SOUTH 08°46'31" WEST FOR A DISTANCE OF 5.97 FEET TO A POINT AND CORNER;

THENCE SOUTH 36°28'29" EAST FOR A DISTANCE OF 85.00 FEET TO A POINT AND CORNER;

THENCE SOUTH 41°34'43" WEST FOR A DISTANCE OF 42.32 FEET TO A POINT AND CORNER;

THENCE NORTH 38°26'57" WEST FOR A DISTANCE OF 4.64 FEET TO A POINT AND CORNER;

EXHIBIT "A" CONTINUED

THENCE NORTH 41°14'44" WEST FOR A DISTANCE OF 40.52 FEET TO A POINT AND CORNER;

THENCE NORTH 36°50'35" WEST FOR A DISTANCE OF 45.49 FEET TO A POINT AND CORNER;

THENCE NORTH 46°36'46" WEST FOR A DISTANCE OF 50.50 FEET TO A POINT AND CORNER;

THENCE NORTH 45°27'50" WEST FOR A DISTANCE OF 51.79 FEET TO A POINT AND CORNER;

THENCE NORTH 45°52'02" WEST FOR A DISTANCE OF 70.48 FEET TO A POINT AND CORNER;

THENCE NORTH 52°49'17" WEST FOR A DISTANCE OF 34.22 FEET TO A POINT AND CORNER;

THENCE NORTH 50°48'15" WEST FOR A DISTANCE OF 12.98 FEET TO A POINT AND CORNER;

THENCE NORTH 78°26'25" EAST FOR A DISTANCE OF 65.91 FEET TO THE **POINT OF BEGINNING.**

CONTAINING: 14057 SQUARE FEET OR 0.323 ACRES OF LAND, MORE OR LESS.

EXHIBIT "A" CONTINUED

**DESCRIPTION OF PARCEL 3-2
THE HUNTWYCK DRAINAGE CANAL SERVITUDE LOCATED IN
SECTION 38, TOWNSHIP 9 SOUTH - RANGE 14 EAST,
GREENSBURG LAND DISTRICT,
ST. TAMMANY PARISH, LOUISIANA**

DESCRIPTION OF A 0.011 ACRE PARCEL OF LAND LOCATED PARISH OF ST. TAMMANY, STATE OF LOUISIANA IN ACCORDANCE WITH A PLAN ENTITLED HUNTWYCK DRAINAGE CANAL SERVITUDE PARCEL MAP, SHEET 3, DATED MAY 6, 2009 AND REVISED JANUARY 18, 2010.

SAID 0.011 ACRE PARCEL BEING MORE FULLY DESCRIBED AS FOLLOWS:

COMMENCING AT AN 1/2" IRON ROD FOUND, SAID POINT BEING THE CORNER COMMON TO SECTIONS 4, 5 & 38, TOWNSHIP 9 SOUTH - RANGE 14 EAST, THENCE NORTH 63°31'14" WEST FOR A DISTANCE OF 312.59 FEET TO A POINT AND CORNER; THENCE NORTH 63°43'57" WEST FOR A DISTANCE OF 748.36 FEET TO A POINT AND CORNER; THENCE SOUTH 78°26'25" WEST FOR A DISTANCE OF 488.80 FEET TO A POINT AND CORNER; THENCE SOUTH 52°49'17" EAST FOR A DISTANCE OF 6.76 FEET TO A POINT AND CORNER; THENCE SOUTH 45°52'02" EAST FOR A DISTANCE OF 73.70 FEET TO A POINT AND CORNER; THENCE SOUTH 45°27'50" EAST FOR A DISTANCE OF 51.47 FEET TO A POINT AND CORNER; THENCE SOUTH 46°36'46" EAST FOR A DISTANCE OF 51.36 FEET TO A POINT AND CORNER; THENCE SOUTH 08°46'31" WEST FOR A DISTANCE OF 5.97 FEET TO A POINT AND CORNER; THENCE SOUTH 36°28'29" EAST FOR A DISTANCE OF 85.00 FEET TO THE POINT OF BEGINNING.

THENCE SOUTH 41°34'43" WEST FOR A DISTANCE OF 8.31 FEET TO A POINT AND CORNER;

THENCE NORTH 36°28'29" WEST FOR A DISTANCE OF 85.00 FEET TO A POINT AND CORNER;

THENCE NORTH 08°46'31" EAST FOR A DISTANCE OF 5.97 FEET TO A POINT AND CORNER;

THENCE SOUTH 46°36'46" EAST FOR A DISTANCE OF 2.90 FEET TO A POINT AND CORNER;

THENCE SOUTH 36°50'35" EAST FOR A DISTANCE OF 47.84 FEET TO A POINT AND CORNER;

THENCE SOUTH 41°14'44" EAST FOR A DISTANCE OF 36.91 FEET TO THE POINT OF BEGINNING.

CONTAINING: 488 SQUARE FEET OR 0.011 ACRES OF LAND, MORE OR LESS.

EXHIBIT "A" CONTINUED

**DESCRIPTION OF PARCEL 3-3
THE HUNTWYCK DRAINAGE CANAL SERVITUDE LOCATED IN
SECTION 38, TOWNSHIP 9 SOUTH - RANGE 14 EAST,
GREENSBURG LAND DISTRICT,
ST. TAMMANY PARISH, LOUISIANA**

DESCRIPTION OF A 0.071 ACRE PARCEL OF LAND LOCATED IN THE PARISH OF ST. TAMMANY, STATE OF LOUISIANA IN ACCORDANCE WITH A PLAN ENTITLED HUNTWYCK DRAINAGE CANAL SERVITUDE PARCEL MAP, SHEET 3, DATED MAY 06, 2009 AND REVISED JANUARY 18, 2010.

SAID 0.071 ACRE PARCEL BEING MORE FULLY DESCRIBED AS FOLLOWS:

COMMENCING AT AN 1/2" IRON ROD FOUND, SAID POINT BEING THE CORNER COMMON TO SECTIONS 4, 5 & 38, TOWNSHIP 9 SOUTH - RANGE 14 EAST, THENCE NORTH 63°31'14" WEST FOR A DISTANCE OF 312.59 FEET TO A POINT AND CORNER; THENCE SOUTH 19°15'27" WEST FOR A DISTANCE OF 132.23 FEET TO A POINT AND CORNER; THENCE NORTH 70°52'48" WEST FOR A DISTANCE OF 417.09 FEET TO A POINT AND CORNER; THENCE SOUTH 89°42'01" WEST FOR A DISTANCE OF 69.90 FEET TO A POINT AND CORNER; THENCE SOUTH 84°27'40" WEST FOR A DISTANCE OF 54.51 FEET TO A POINT AND CORNER; THENCE SOUTH 68°31'44" WEST FOR A DISTANCE OF 93.50 FEET TO A POINT AND CORNER; THENCE SOUTH 68°31'44" WEST FOR A DISTANCE OF 118.01 FEET TO A POINT AND CORNER; THENCE SOUTH 30°57'31" WEST FOR A DISTANCE OF 110.19 FEET TO THE **POINT OF BEGINNING;**

THENCE SOUTH 58°31'44" WEST FOR A DISTANCE OF 9.30 FEET TO A POINT AND CORNER;

THENCE NORTH 49°21'30" WEST FOR A DISTANCE OF 10.51 FEET TO A POINT AND CORNER;

THENCE NORTH 49°21'30" WEST FOR A DISTANCE OF 5.48 FEET TO A POINT AND CORNER;

THENCE NORTH 44°20'43" WEST FOR A DISTANCE OF 40.59 FEET TO A POINT AND CORNER;

THENCE NORTH 40°41'11" WEST FOR A DISTANCE OF 61.67 FEET TO A POINT AND CORNER;

THENCE NORTH 34°59'38" WEST FOR A DISTANCE OF 65.23 FEET TO A POINT AND CORNER;

THENCE NORTH 36°53'23" WEST FOR A DISTANCE OF 32.53 FEET TO A POINT AND CORNER;

EXHIBIT "A" CONTINUED

THENCE NORTH 41°34'43" EAST FOR A DISTANCE OF 16.60 FEET TO A POINT AND CORNER;

THENCE SOUTH 36°14'22" EAST FOR A DISTANCE OF 185.67 FEET TO A POINT AND CORNER;

THENCE SOUTH 46°34'47" EAST FOR A DISTANCE OF 34.14 FEET TO THE **POINT OF BEGINNING**.

CONTAINING: 3112 SQUARE FEET OR 0.071 ACRES OF LAND, MORE OR LESS.

EXHIBIT "A" CONTINUED

**DESCRIPTION OF PARCEL 3-4
THE HUNTWYCK DRAINAGE CANAL SERVITUDE LOCATED IN SECTION 38,
TOWNSHIP 9 SOUTH - RANGE 14 EAST,
GREENSBURG LAND DISTRICT,
ST. TAMMANY PARISH, LOUISIANA**

DESCRIPTION OF A 0.075 ACRE PARCEL OF LAND LOCATED IN THE PARISH OF ST. TAMMANY, STATE OF LOUISIANA IN ACCORDANCE WITH A PLAN ENTITLED HUNTWYCK DRAINAGE CANAL SERVITUDE PARCEL MAP SHEET 3, DATED MAY 06, 2009 AND REVISED JANUARY 18, 2010.

SAID 0.075 ACRE PARCEL BEING MORE FULLY DESCRIBED AS FOLLOWS:

COMMENCING AT AN 1/2" IRON ROD FOUND, SAID POINT BEING THE CORNER COMMON TO SECTIONS 4, 5 & 38, TOWNSHIP 9 SOUTH - RANGE 14 EAST, THENCE NORTH 63°31'14" WEST FOR A DISTANCE OF 312.59 FEET TO A POINT AND CORNER; THENCE SOUTH 19°15'27" WEST FOR A DISTANCE OF 132.23 FEET TO A POINT AND CORNER; THENCE NORTH 70°52'48" WEST FOR A DISTANCE OF 417.09 FEET TO A POINT AND CORNER; THENCE SOUTH 89°42'01" WEST FOR A DISTANCE OF 69.90 FEET TO A POINT AND CORNER; THENCE SOUTH 84°27'40" WEST FOR A DISTANCE OF 54.51 FEET TO A POINT AND CORNER; THENCE SOUTH 68°31'44" WEST FOR A DISTANCE OF 93.50 FEET TO A POINT AND CORNER; THENCE SOUTH 68°31'44" WEST FOR A DISTANCE OF 118.01 FEET TO THE POINT OF BEGINNING;

THENCE SOUTH 30°57'31" WEST FOR A DISTANCE OF 110.19 FEET TO A POINT AND CORNER;

THENCE NORTH 46°34'47" WEST FOR A DISTANCE OF 34.14 FEET TO A POINT AND CORNER;

THENCE NORTH 36°14'22" WEST FOR A DISTANCE OF 185.67 FEET TO A POINT AND CORNER;

THENCE NORTH 41°34'43" EAST FOR A DISTANCE OF 9.65 FEET TO A POINT AND CORNER;

THENCE SOUTH 38°26'57" EAST FOR A DISTANCE OF 8.66 FEET TO A POINT AND CORNER;

THENCE SOUTH 35°01'45" EAST FOR A DISTANCE OF 40.63 FEET TO A POINT AND CORNER;

THENCE SOUTH 34°59'04" EAST FOR A DISTANCE OF 53.29 FEET TO A POINT AND CORNER;

EXHIBIT "A" CONTINUED

THENCE SOUTH 40°41'11" EAST FOR A DISTANCE OF 59.65 FEET TO A POINT AND CORNER;

THENCE SOUTH 44°20'43" EAST FOR A DISTANCE OF 38.70 FEET TO A POINT AND CORNER;

THENCE SOUTH 49°21'30" EAST FOR A DISTANCE OF 4.85 FEET TO A POINT AND CORNER;

THENCE NORTH 30°57'31" EAST FOR A DISTANCE OF 95.32 FEET TO A POINT AND CORNER;

THENCE SOUTH 41°13'09" EAST FOR A DISTANCE OF 10.50 FEET TO THE **POINT OF BEGINNING**.

CONTAINING: 3288 SQUARE FEET OR 0.075 ACRES OF LAND, MORE OR LESS.

EXHIBIT "A" CONTINUED

**DESCRIPTION OF PARCEL 3-5
THE HUNTWYCK DRAINAGE CANAL SERVITUDE LOCATED IN
SECTION 38, TOWNSHIP 9 SOUTH - RANGE 14 EAST,
GREENSBURG LAND DISTRICT,
ST. TAMMANY PARISH, LOUISIANA**

DESCRIPTION OF A 0.028 ACRE PARCEL OF LAND LOCATED IN THE PARISH OF ST. TAMMANY, STATE OF LOUISIANA IN ACCORDANCE WITH A PLAN ENTITLED HUNTWYCK DRAINAGE CANAL SERVITUDE PARCEL MAP SHEET 3, DATED MAY 06, 2009 AND REVISED JANUARY 18, 2010.

SAID 0.028 ACRE PARCEL BEING MORE FULLY DESCRIBED AS FOLLOWS:

COMMENCING AT AN 1/2" IRON ROD FOUND, SAID POINT BEING THE CORNER COMMON TO SECTIONS 4, 5 & 38, TOWNSHIP 9 SOUTH - RANGE 14 EAST, THENCE NORTH 63°31'14" WEST FOR A DISTANCE OF 312.59 FEET TO A POINT AND CORNER; THENCE SOUTH 19°15'27" WEST FOR A DISTANCE OF 132.23 FEET TO A POINT AND CORNER; THENCE NORTH 70°52'48" WEST FOR A DISTANCE OF 417.09 FEET TO A POINT AND CORNER; THENCE SOUTH 89°42'01" WEST FOR A DISTANCE OF 69.90 FEET TO A POINT AND CORNER; THENCE SOUTH 84°27'40" WEST FOR A DISTANCE OF 54.51 FEET TO A POINT AND CORNER; THENCE SOUTH 68°31'44" WEST FOR A DISTANCE OF 93.50 FEET TO THE POINT OF BEGINNING;

THENCE SOUTH 68°31'44" WEST FOR A DISTANCE OF 118.01 FEET TO A POINT AND CORNER;

THENCE NORTH 41°13'09" WEST FOR A DISTANCE OF 10.50 FEET TO A POINT AND CORNER;

THENCE NORTH 30°57'31" EAST FOR A DISTANCE OF 0.19 FEET TO A POINT AND CORNER;

THENCE NORTH 68°31'44" EAST FOR A DISTANCE OF 125.25 FEET TO A POINT AND CORNER;

THENCE SOUTH 00°28'16" EAST FOR A DISTANCE OF 10.71 FEET TO THE POINT OF BEGINNING.

CONTAINING: 1217 SQUARE FEET OR 0.028 ACRES OF LAND, MORE OR LESS.

EXHIBIT "A" CONTINUED

**DESCRIPTION OF PARCEL 3-6
THE HUNTWYCK DRAINAGE CANAL SERVITUDE LOCATED IN
SECTION 38, TOWNSHIP 9 SOUTH - RANGE 14 EAST,
GREENSBURG LAND DISTRICT,
ST. TAMMANY PARISH, LOUISIANA**

DESCRIPTION OF A 0.053 ACRE PARCEL OF LAND LOCATED PARISH OF ST. TAMMANY, STATE OF LOUISIANA IN ACCORDANCE WITH A PLAN ENTITLED HUNTWYCK DRAINAGE CANAL SERVITUDE PARCEL MAP, SHEET 3, DATED MAY 6, 2009 AND REVISED JANUARY 18, 2010.

SAID 0.053 ACRE PARCEL BEING MORE FULLY DESCRIBED AS FOLLOWS:

COMMENCING AT AN 1/2" IRON ROD FOUND, SAID POINT BEING THE CORNER COMMON TO SECTIONS 4, 5 & 38, TOWNSHIP 9 SOUTH - RANGE 14 EAST, THENCE NORTH 63°31'14" WEST FOR A DISTANCE OF 312.59 FEET TO A POINT AND CORNER; THENCE SOUTH 19°15'27" WEST FOR A DISTANCE OF 132.23 FEET TO A POINT AND CORNER; THENCE NORTH 70°52'48" WEST FOR A DISTANCE OF 417.09 FEET TO THE POINT OF BEGINNING;

THENCE SOUTH 89°42'01" WEST FOR A DISTANCE OF 69.90 FEET TO A POINT AND CORNER;

THENCE SOUTH 84°27'40" WEST FOR A DISTANCE OF 54.51 FEET TO A POINT AND CORNER;

THENCE SOUTH 68°31'44" WEST FOR A DISTANCE OF 93.50 FEET TO A POINT AND CORNER;

THENCE NORTH 00°28'16" WEST FOR A DISTANCE OF 10.71 FEET TO A POINT AND CORNER;

THENCE NORTH 68°31'44" EAST FOR A DISTANCE OF 105.31 FEET TO A POINT AND CORNER;

THENCE NORTH 89°42'01" EAST FOR A DISTANCE OF 116.55 FEET TO A POINT AND CORNER;

THENCE SOUTH 18°14'31" WEST FOR A DISTANCE OF 10.55 FEET TO THE POINT OF BEGINNING.

CONTAINING: 2,305 SQUARE FEET OR 0.053 ACRES OF LAND, MORE OR LESS.

EXHIBIT "A" CONTINUED

**DESCRIPTION OF PARCEL 3-7
THE HUNTWYCK DRAINAGE CANAL SERVITUDE LOCATED IN
SECTION 38, TOWNSHIP 9 SOUTH - RANGE 14 EAST,
GREENSBURG LAND DISTRICT,
ST. TAMMANY PARISH, LOUISIANA**

DESCRIPTION OF A 0.048 ACRE PARCEL OF LAND LOCATED PARISH OF ST. TAMMANY, STATE OF LOUISIANA IN ACCORDANCE WITH A PLAN ENTITLED HUNTWYCK DRAINAGE CANAL SERVITUDE PARCEL MAP, SHEET 3, DATED MAY 6, 2009 AND REVISED JANUARY 18, 2010.

SAID 0.048 ACRE PARCEL BEING MORE FULLY DESCRIBED AS FOLLOWS:

COMMENCING AT AN 1/2" IRON ROD FOUND, SAID POINT BEING THE CORNER COMMON TO SECTIONS 4, 5 & 38, TOWNSHIP 9 SOUTH - RANGE 14 EAST, THENCE NORTH 63°31'14" WEST FOR A DISTANCE OF 312.59 FEET TO A POINT AND CORNER; THENCE SOUTH 19°15'27" WEST FOR A DISTANCE OF 132.23 FEET TO A POINT AND CORNER; THENCE NORTH 70°52'48" WEST FOR A DISTANCE OF 417.09 FEET TO THE POINT OF BEGINNING;

THENCE NORTH 18°14'31" EAST FOR A DISTANCE OF 10.00 FEET TO A POINT AND CORNER;

THENCE SOUTH 70°52'48" EAST FOR A DISTANCE OF 209.47 FEET TO A POINT AND CORNER;

THENCE SOUTH 19°15'27" WEST FOR A DISTANCE OF 10.00 FEET TO A POINT AND CORNER;

THENCE NORTH 70°52'48" WEST FOR A DISTANCE OF 209.32 TO A THE POINT OF BEGINNING.

CONTAINING: 2,094 SQUARE FEET OR 0.048 ACRES OF LAND, MORE OR LESS.

EXHIBIT "A" CONTINUED

DESCRIPTION OF PARCEL 4-1

THE HUNTWYCK DRAINAGE CANAL SERVITUDE LOCATED IN SECTION 38, TOWNSHIP 9 SOUTH - RANGE 14 EAST, GREENSBURG LAND DISTRICT, ST. TAMMANY PARISH, LOUISIANA

DESCRIPTION OF A 0.048 ACRE PARCEL OF LAND LOCATED IN THE PARISH OF ST. TAMMANY, STATE OF LOUISIANA IN ACCORDANCE WITH A PLAN ENTITLED HUNTWYCK DRAINAGE CANAL SERVITUDE PARCEL MAP, SHEET 4, DATED MAY 06, 2009 AND REVISED JANUARY 18, 2010.

SAID 0.048 ACRE PARCEL BEING MORE FULLY DESCRIBED AS FOLLOWS:

COMMENCING AT AN 1/2" IRON ROD FOUND, SAID POINT BEING THE CORNER COMMON TO SECTIONS 4, 5 & 38, TOWNSHIP 9 SOUTH - RANGE 14 EAST, THENCE NORTH 63°31'14" WEST FOR A DISTANCE OF 312.59 FEET TO A POINT AND CORNER; THENCE SOUTH 19°15'27" WEST FOR A DISTANCE OF 122.23 FEET TO THE POINT OF BEGINNING;

THENCE SOUTH 70°52'48" EAST FOR A DISTANCE OF 207.77 FEET TO A POINT AND CORNER;

THENCE SOUTH 19°15'27" WEST FOR A DISTANCE OF 10.00 FEET TO A POINT AND CORNER;

THENCE NORTH 70°52'48" WEST FOR A DISTANCE OF 207.77 FEET TO A POINT AND CORNER;

THENCE NORTH 19°15'27" EAST FOR A DISTANCE OF 10.00 FEET TO THE POINT OF BEGINNING.

CONTAINING: 2,078 SQUARE FEET OR 0.048 ACRES OF LAND, MORE OR LESS.

EXHIBIT "A" CONTINUED

DESCRIPTION OF PARCEL 4-2

THE HUNTWYCK DRAINAGE CANAL SERVITUDE LOCATED IN SECTION 38, TOWNSHIP 9 SOUTH - RANGE 14 EAST, GREENSBURG LAND DISTRICT, ST. TAMMANY PARISH, LOUISIANA

DESCRIPTION OF A 0.160 ACRE PARCEL OF LAND LOCATED IN THE PARISH OF ST. TAMMANY, STATE OF LOUISIANA IN ACCORDANCE WITH A PLAN ENTITLED HUNTWYCK DRAINAGE CANAL SERVITUDE PARCEL MAP, SHEET 4, DATED MAY 06, 2009 AND REVISED JANUARY 18, 2010.

SAID 0.160 ACRE PARCEL BEING MORE FULLY DESCRIBED AS FOLLOWS:

COMMENCING AT A 1/2" IRON ROD FOUND, SAID POINT BEING THE CORNER COMMON TO SECTIONS 4, 5 & 38, TOWNSHIP 9 SOUTH - RANGE 14 EAST, THENCE SOUTH 19°47'51" WEST FOR A DISTANCE OF 25.71 FEET TO A POINT AND CORNER; THENCE NORTH 63°31'14" WEST FOR A DISTANCE OF 147.67 FEET TO THE POINT OF BEGINNING;

THENCE SOUTH 38°40'33" EAST FOR A DISTANCE OF 31.17 FEET TO A POINT AND CORNER;

THENCE SOUTH 56°08'47" WEST FOR A DISTANCE OF 60.92 FEET TO A POINT AND CORNER;

THENCE NORTH 38°40'33" WEST FOR A DISTANCE OF 78.51 FEET TO A POINT AND CORNER;

THENCE NORTH 51°19'27" EAST FOR A DISTANCE OF 36.41 FEET TO A POINT AND CORNER;

THENCE NORTH 63°31'14" WEST FOR A DISTANCE OF 81.68 FEET TO A POINT AND CORNER;

THENCE SOUTH 19°15'27" WEST FOR A DISTANCE OF 103.80 FEET TO A POINT AND CORNER;

THENCE NORTH 70°52'48" WEST FOR A DISTANCE OF 25.00 FEET TO A POINT AND CORNER;

THENCE NORTH 19°15'27" EAST FOR A DISTANCE OF 10.00 FEET TO A POINT AND CORNER;

THENCE SOUTH 70°52'48" EAST FOR A DISTANCE OF 15.00 FEET TO A POINT AND CORNER;

EXHIBIT "A" CONTINUED

THENCE NORTH 19°15'27" EAST FOR A DISTANCE OF 105.17 FEET TO A POINT AND CORNER;

THENCE SOUTH 63°31'14" EAST FOR A DISTANCE OF 150.83 FEET TO A POINT AND CORNER;

THENCE SOUTH 26°28'46" WEST FOR A DISTANCE OF 10.00 FEET TO **THE POINT OF BEGINNING.**

CONTAINING: 6980 SQUARE FEET OR 0.160 ACRES OF LAND, MORE OR LESS.

EXHIBIT "A" CONTINUED

DESCRIPTION OF PARCEL 5-1

THE HUNTWYCK DRAINAGE CANAL SERVITUDE LOCATED IN SECTION 38, TOWNSHIP 9 SOUTH - RANGE 14 EAST, GREENSBURG LAND DISTRICT, ST. TAMMANY PARISH, LOUISIANA

DESCRIPTION OF A 0.105 ACRE PARCEL OF LAND LOCATED IN THE PARISH OF ST. TAMMANY, STATE OF LOUISIANA IN ACCORDANCE WITH A PLAN ENTITLED HUNTWYCK DRAINAGE CANAL SERVITUDE PARCEL MAP SHEET 5, DATED MAY 06, 2009 AND REVISED JANUARY 18, 2010.

SAID 0.105 ACRE PARCEL BEING MORE FULLY DESCRIBED AS FOLLOWS:

COMMENCING AT AN 1/2" IRON ROD FOUND, SAID POINT LOCATED AT THE SOUTHWEST CORNER OF LOT 575 ALSO BEING THE SOUTHWEST CORNER OF HUNTWYCK VILLAGE SUBDIVISION, PHASE VII LOCATED IN SECTIONS 4, 5, & 38, TOWNSHIP 9 SOUTH - RANGE 14 EAST, GREENSBURG LAND DISTRICT, ST. TAMMANY PARISH, LOUISIANA, THENCE NORTH 03°10'22" EAST FOR A DISTANCE OF 139.34 FEET TO THE POINT OF BEGINNING.

THENCE NORTH 86°55'55" WEST TO THE W-12 DRAINAGE CANAL SERVITUDE FOR A DISTANCE OF 460.10 FEET TO A POINT AND CORNER;

THENCE NORTH 43°05'54" EAST ALONG W-12 DRAINAGE CANAL SERVITUDE FOR A DISTANCE OF 13.06 FEET TO A POINT AND CORNER;

THENCE SOUTH 86°55'55" EAST FOR A DISTANCE OF 451.72 FEET TO A POINT AND CORNER;

THENCE SOUTH 03°10'22" WEST FOR A DISTANCE OF 10.00 FEET TO THE POINT OF BEGINNING.

CONTAINING: 4559 SQUARE FEET OR 0.105 ACRES OF LAND, MORE OR LESS.

EXHIBIT "A" CONTINUED

**DESCRIPTION OF PARCEL 5-2
THE 10 FOOT DRAINAGE SERVITUDE LOCATED IN SECTION 38,
TOWNSHIP 9 SOUTH - RANGE 14 EAST, GREENSBURG LAND DISTRICT,
ST. TAMMANY PARISH, LOUISIANA**

DESCRIPTION OF A 0.014 ACRE PARCEL OF LAND LOCATED IN THE PARISH OF ST. TAMMANY, STATE OF LOUISIANA IN ACCORDANCE WITH A PLAN ENTITLED HUNTWYCK DRAINAGE CANAL SERVITUDE PARCEL MAP SHEET 5, DATED MAY 06, 2009 AND REVISED JANUARY 18, 2010.

SAID 0.014 ACRE PARCEL BEING MORE FULLY DESCRIBED AS FOLLOWS:

COMMENCING AT AN 1/2" IRON ROD FOUND, SAID POINT LOCATED AT THE SOUTHWEST CORNER OF LOT 575 ALSO BEING THE SOUTHWEST CORNER OF HUNTWYCK VILLAGE SUBDIVISION, PHASE VII LOCATED IN SECTIONS 4, 5, & 38, TOWNSHIP 9 SOUTH - RANGE 14 EAST, GREENSBURG LAND DISTRICT, ST. TAMMANY PARISH, LOUISIANA, THENCE NORTH 03°10'22" EAST FOR A DISTANCE OF 144.34 FEET TO THE **POINT OF BEGINNING**.

THENCE NORTH 03°10'22" EAST FOR A DISTANCE OF 5.00 FEET TO A POINT AND CORNER;

THENCE SOUTH 86°55'55" EAST FOR A DISTANCE OF 119.92 FEET TO A POINT AND CORNER;

THENCE, ALONG A NON-TANGENT CURVE TO THE LEFT HAVING A RADIUS OF 50.00 FEET, A CENTRAL ANGLE OF 5°44'21.12", THE LONG CHORD OF WHICH BEARS SOUTH 00°11'55" WEST FOR A DISTANCE OF 5.01 FEET AND FOR AN ARC LENGTH OF 5.01 FEET TO A POINT;

THENCE NORTH 86°55'55" WEST FOR A DISTANCE OF 120.17 FEET THE **POINT OF BEGINNING**.

CONTAINING: 600 SQUARE FEET OR 0.014 ACRES OF LAND, MORE OR LESS.

EXHIBIT "A" CONTINUED

**DESCRIPTION OF PARCEL 5-3
A 10 FOOT DRAINAGE SERVITUDE LOCATED IN SECTION 38, TOWNSHIP
9 SOUTH - RANGE 14 EAST, GREENSBURG LAND DISTRICT, ST.
TAMMANY PARISH, LOUISIANA**

DESCRIPTION OF A 0.014 ACRE PARCEL OF LAND LOCATED IN THE PARISH OF ST. TAMMANY, STATE OF LOUISIANA IN ACCORDANCE WITH A PLAN ENTITLED HUNTWYCK DRAINAGE CANAL SERVITUDE PARCEL MAP, SHEET 5, DATED MAY 06, 2009 AND REVISED JANUARY 18, 2010.

SAID 0.014 ACRE PARCEL BEING MORE FULLY DESCRIBED AS FOLLOWS:

COMMENCING AT AN 1/2" IRON ROD FOUND, SAID POINT LOCATED AT THE SOUTHWEST CORNER OF LOT 575 ALSO BEING THE SOUTHWEST CORNER OF HUNTWYCK VILLAGE SUBDIVISION, PHASE VII LOCATED IN SECTIONS 4, 5, & 38, TOWNSHIP 9 SOUTH - RANGE 14 EAST, GREENSBURG LAND DISTRICT, ST. TAMMANY PARISH, LOUISIANA, THENCE NORTH 03°10'22" EAST FOR A DISTANCE OF 139.34 FEET TO THE POINT OF BEGINNING.

THENCE NORTH 03°10'22" EAST FOR A DISTANCE OF 5.00 FEET TO A POINT AND CORNER;

THENCE SOUTH 86°55'55" EAST FOR A DISTANCE OF 120.16 FEET TO A POINT AND CORNER;

THENCE, ALONG A NON-TANGENT CURVE TO THE LEFT HAVING A RADIUS OF 50.00 FEET, A CENTRAL ANGLE OF 5°44'21.12", THE LONG CHORD OF WHICH BEARS SOUTH 05°56'16" WEST FOR A DISTANCE OF 5.01 FEET AND FOR AN ARC LENGTH OF 5.01 FEET TO A POINT;

THENCE NORTH 86°55'55" WEST FOR A DISTANCE OF 119.92 FEET THE POINT OF BEGINNING.

CONTAINING: 600 SQUARE FEET OR 0.014 ACRES OF LAND, MORE OR LESS.