

ST. TAMMANY PARISH COUNCIL

ORDINANCE

ORDINANCE CALENDAR NO. 4407 ORDINANCE COUNCIL SERIES NO. _____

COUNCIL SPONSOR: BINDER/DAVIS PROVIDED BY: President/Legal

INTRODUCED BY: _____ SECONDED BY: _____

ON THE _____ DAY OF _____ 2010

ORDINANCE TO AUTHORIZE THE PARISH OF ST. TAMMANY, THROUGH THE OFFICE OF THE PARISH PRESIDENT, TO PURCHASE, EXPROPRIATE OR OTHERWISE ACQUIRE CERTAIN PARCELS, RIGHTS OF WAY AND/OR SERVITUDES FOR THE HUNTWYCK VILLAGE DRAINAGE IMPROVEMENT PROJECT.

WHEREAS, the St. Tammany Parish Government desires to acquire certain immovable property (hereinafter referred to as "Property"); and

WHEREAS, there is a need and a public purpose for the acquisition of certain immovable property for drainage improvements in Huntwyck Village Subdivision; and

WHEREAS, the Parish of St. Tammany hereby desires to acquire the Property, rights of way and/or servitudes and authorizes the Office of the Parish President to do whatever is necessary to enter into negotiations and acquire said Property, servitudes and/or rights of way.

THE PARISH OF ST. TAMMANY HEREBY ORDAINS to authorize the Parish of St. Tammany, to acquire by purchase, donation or expropriation all that certain parcel of ground described in Exhibit "A" attached hereto; and

BE IF FURTHER RESOLVED that pursuant to all applicable provision of law, the Office of the Parish President is directed and authorized to do whatever is necessary to acquire the Property, servitudes and/or rights of way; and

THAT, the Office of the Parish President is authorized and instructed to proceed with the acquisition of the Property, servitudes and/or rights of way in a timely and orderly matter; and

THAT, the Office of the Parish President is authorized to exercise its discretion in acquiring the Property, servitudes and /or rights of way, together with all agreements and all transactions necessary to carry out the intent of this Ordinance; and

THAT, if purchased, the purchase price shall not exceed the fair market value of the Property as evidenced by an appraisal obtained or supplied to the Parish plus fees and costs; and

THAT, any and all actions previously taken by the Office of the Parish President in furtherance of the actions contemplated herein are ratified and accepted accordingly.

REPEAL: All Ordinances or parts of Ordinance in conflict herewith are hereby repealed.

ORDINANCE CALENDAR NO. 4407

ORDINANCE COUNCIL SERIES NO. _____

PAGE 2 OF 2

SEVERABILITY: If any provision of this Ordinance shall be held to be invalid, such invalidity shall not affect other provisions herein which can be given effect without the invalid provision and to this end the provisions of this Ordinance are hereby declared to be severable.

EFFECTIVE DATE: This Ordinance shall become effective immediately upon final adoption.

MOVED FOR ADOPTION BY: _____, SECONDED BY: _____

WHEREUPON THIS ORDINANCE WAS SUBMITTED TO A VOTE AND RESULTED IN THE FOLLOWING:

YEAS:

NAYS:

ABSTAIN:

ABSENT:

THIS ORDINANCE WAS DECLARED ADOPTED AT A REGULAR MEETING OF THE PARISH COUNCIL ON THE _____ DAY OF _____ 2010; AND BECOMES ORDINANCE COUNCIL SERIES NO. _____.

JERRY BINDER, COUNCIL CHAIRMAN

ATTEST:

THERESA FORD, COUNCIL CLERK

KEVIN DAVIS, PARISH PRESIDENT

Published introduction: SEPTEMBER 30, 2010

Published adoption on: _____, 2010

Delivered to Parish President: _____, 2010 @ _____

Returned to Council Clerk: _____, 2010 @ _____

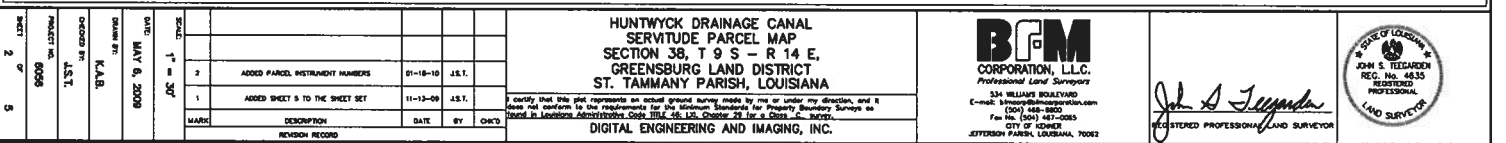
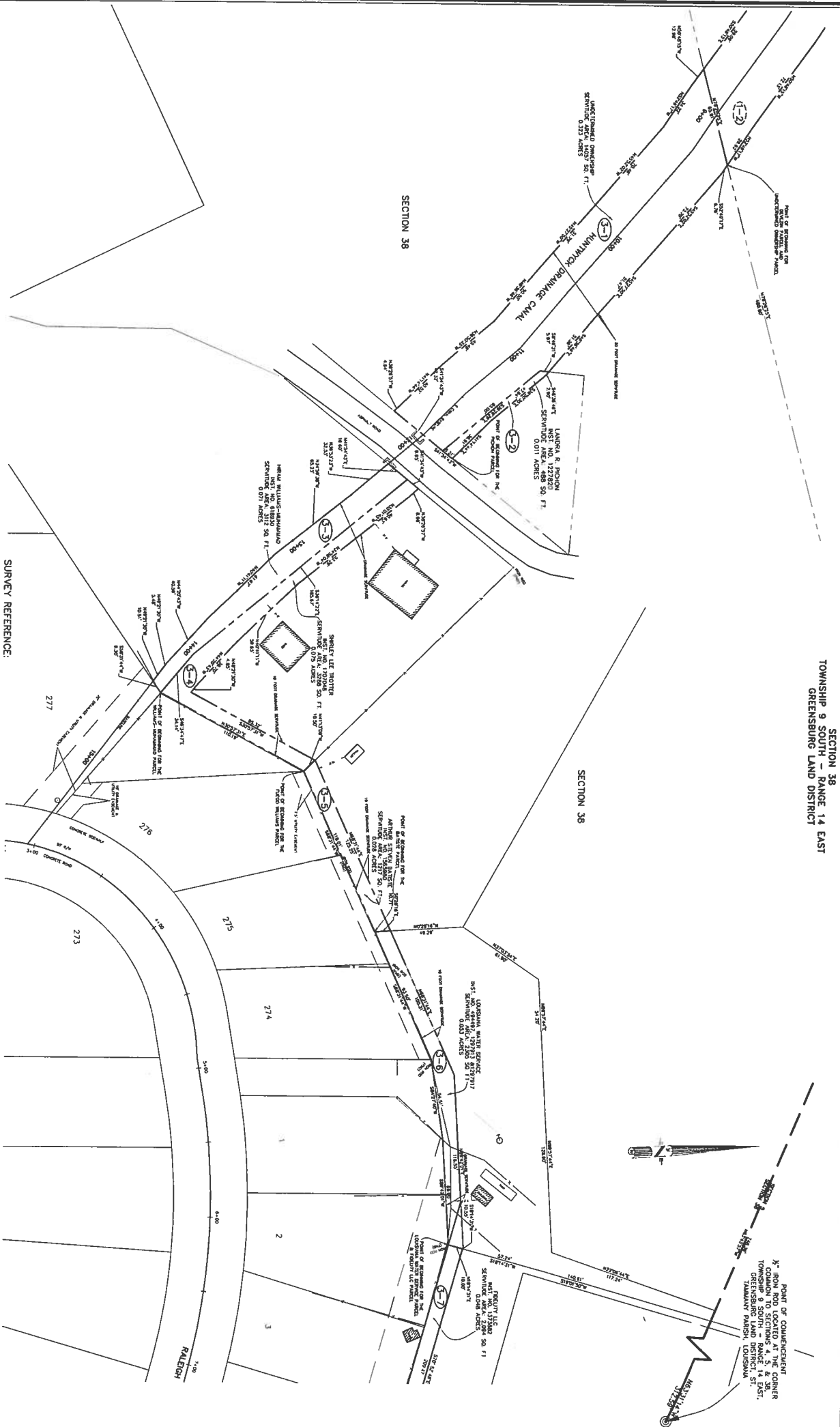


EXHIBIT "A" CONTINUED



GENERAL NOTES

THE LOCATIONS OF UNDERGROUND AND NON-HABITABLE UTILITIES SHOWN HEREON HAVE BEEN DETERMINED FROM DATA OTHER THAN THAT OF THE AGENCIES CONTROLLING SUCH DATA AND/OR EXTRACTED FROM RECORDS MADE AVAILABLE TO US BY THE AGENCIES CONTROLLING SUCH RECORDS. WHERE FOUND, THE SURFACE FEATURES OF LOCATIONS ARE SHOWN. THE ACTUAL NON-HABITABLE LOCATIONS MAY VARY FROM THOSE SHOWN HEREON. EACH AGENCY SHOULD BE CONTACTED RELATIVE TO THE PRECISE LOCATION OF ITS UNDERGROUND INSTALLATION PRIOR TO ANY RELIANCE UPON THE ACCURACY OF SUCH LOCATIONS SHOWN HEREON, INCLUDING PRIOR TO EXCAVATION AND

SURVEY REFERENCE:

- [illegible]

The Statistics and Regulations shown on this survey are limited to those set forth in the description furnished us and there is no representation that all applicable Surveys and Restrictions are shown herein. The lawyer has made no title search or public record search in compliance with the data for this survey.

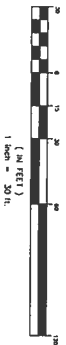
I have consulted the Federal Insurance Administration, Flood Hazard Boundary Maps and found this property is not in a Special Flood Hazard Area.

Special Flood

MAP DATED/REVISED: APRIL 21, 1999 & APRIL 2, 1991

MAP DATED/REVISED: APRIL 21, 1999 & APRIL 2, 1991

GRAPHIC SCALE



T = 30'	4	ADDED STRUCTURES CLOSE TO THE REQUIRED PARCELS	03-12-10	J.S.T.	
	3	CHANGED LANDOWNER NAMES, WILLIAMS TO FROSTER AND MARY BATISTE TO ARTHUR STEVEN BATISTE	01-18-10		
	2	ADDED PARCEL INSTRUMENT NUMBERS	01-18-10	J.S.T.	
	1	ADDED SHEET 3 TO THE WATER SET AND WOODED THE LOUISIANA BATH SERVICE PARCEL.	11-13-09	J.S.T.	
	MARK	DESCRIPTION	DATE	BY	CHK'D
	REVISION RECORD				

HUNTWYCK DRAINAGE CANAL
SERVITUDE PARCEL MAP
SECTION 38, T 9 S - R 14 E,
GREENSBURG LAND DISTRICT
ST. TAMMANY PARISH, LOUISIANA

I certify that this plot represents an actual ground survey made by me or under my direction, and it does not conform to the requirements for the Minimum Standards for Property Boundary Surveys as found in Ley-pang Administrative Code Title 48-121, Chapter 29.

DIGITAL ENGINEERING AND IMAGING, INC.

BFM
CORPORATION, L.L.C.
Professional Land Surveyors

554 WILLIAMS BOULEVARD
E-mail: bincorp@bincorporation.com
(504) 468-8800
Fax No. (504) 467-0065
CITY OF KENNER
JEFFERSON PARISH, LOUISIANA, 70062

John A. Teyarden
REGISTERED PROFESSIONAL LAND SURVEYOR

SECTION 38
TOWNSHIP 9 SOUTH - RANGE 14 EAST
GREENSBURG LAND DISTRICT



THE LOCATIONS OF UNDERGROUND AND OTHER NONUSUAL UTILITIES SHOWN HEREON HAVE BEEN DETERMINED FROM DATA EITHER FURNISHED BY THE AGENCIES CONTROLLING SUCH DATA AND/OR EXTRACTED FROM RECORDS MADE AVAILABLE TO US BY THE AGENCIES CONTROLLING SUCH RECORDS. WHERE FOUND, THE SURFACE FEATURES OF LOCATIONS ARE SHOWN. THE ACTUAL, NONUSUAL LOCATIONS MAY VARY FROM THOSE SHOWN HEREON. EACH AGENCY SHOULD BE CONTACTED RELATIVE TO THE PRECISE LOCATION OF ITS UNDERGROUND INSTALLATION PRIOR TO ANY RELIANCE UPON THE ACCURACY OF SUCH LOCATIONS SHOWN HEREON, INCLUDING PRIOR TO EXCAVATION AND DRIVING.

[illegible]

The Servitudes and Easements shown on the survey are limited to those set forth in the description furnished us and there is no representation that of application. Servitudes and Easements are shown as they appear on the title. No title search or public record search is compiling the data for this survey.

COMMUNITY PANEL NO. 2252050420 E & 2252050415
MAP DATED/REVISED: APRIL 21, 1999 & APRIL 2, 1999



ection, and 4
Surveys at

554 WILLIAMS BOULEVARD
E-mail: bmc@bmcincorporation.com
(504) 488-8800
Fax No. (504) 487-0025
CITY OF KENNER
JEFFERSON PARISH, LOUISIANA, 70062

John A. Ferguson
REGISTERED PROFESSIONAL LAND SURVEYOR



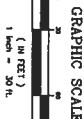
SECTION 38
TOWNSHIP 9 SOUTH -- RANGE 14 EAST
GREENSBURG LAND DISTRICT



THE LOCATIONS OF UNDERGROUND AND OTHER UNKNOWN UTILITIES SHOWN HEREON HAVE BEEN OBTAINED FROM DATA EITHER FURNISHED BY THE AGENCIES CONTROLLING SUCH DATA AND/OR EXTRACTED FROM RECORDS MADE AVAILABLE TO US BY THE AGENCIES CONTROLLING SUCH RECORDS. WHERE POSSIBLE, THE SURFACE FEATURES OF LOCATIONS ARE SHOWN. THE ACTUAL, NONVISIBLE LOCATIONS MAY VARY FROM THOSE SHOWN HEREON. EACH AGENCY SHOULD BE CONTACTED RELATIVE TO THE PRECISE LOCATION OF ITS UNDERGROUND INSTALLATION PRIOR TO ANY RELIANCE ON THE ACCURACY OF SUCH LOCATIONS SHOWN HEREON, INCLUDING PRIOR TO EXCAVATION AND DRILLING.

POINT OF COMMENCEMENT
1/2" IRON ROD LOCATED AT THE
SOUTHWEST CORNER OF LOT 5/5 ALSO
BEING THE SOUTHWEST CORNER OF
HUNTWICK VILLAGE SUBDIVISION, PHASE
IIA LOCATED IN SECTIONS 4, 5, & 38
TOWNSHIP 9 SOUTH - RANGE 14 EAST
GREENSBURG LAND DISTRICT, ST.
TAMMANY PARISH, LOUISIANA

1. SKETCH OF 13.415 ACRES OF LAND FOR RE-PARTITION OF LOT 8 OF PARCEL 1 OF THE JOHN TERRANCE ESTATE, BY SEYM M. BURGESS, DATED NOVEMBER 20, 2002.
2. TOPGRAPH PLAT FOR TOWNSHIP 9 SOUTH - RANGE 14 EAST, GEOGRAPHIC COORDINATE, LOUISIANA, BY R.M. BORD DATED FEBRUARY 14, 1932.
3. BEARINGS ARE BASED ON SLAVE CO'S OBSERVATIONS FROM CO'S STATION "CONVENTION," CO'S STATION "HOLA," AND CO'S STATION "SIDES," THE HORIZONTAL DATUM USED IS THE LOUISIANA STATE PLANT COORDINATE SYSTEM, SOUTH ZONE AND 1983.



HUNTWYCK DRAINAGE CANAL
SERVITUDE PARCEL MAP
SECTION 38, T 9 S - R 14 E,
GREENSBURG LAND DISTRICT
ST. TAMMANY PARISH, LOUISIANA

I certify that this plat represents an actual ground survey made by me or under my direction, and it does not conform to the requirements for the Minimum Standards for Property Boundary Surveys as found in Louisiana Administrative Code Title 48, Chapter 1000.

DIGITAL ENGINEERING AND IMAGING INC

I certify that this plot represents an actual ground survey made by me or under my direction, and it does not conform to the requirements for the Minimum Standards for Property Boundary Surveys as found in Louisiana Administrative Code Title 48:123, Chapter 24 for a Class C survey.

DIGITAL ENGINEERING AND IMAGING, INC.

BFM
CORPORATION, L.L.C.
Professional Land Surveyors

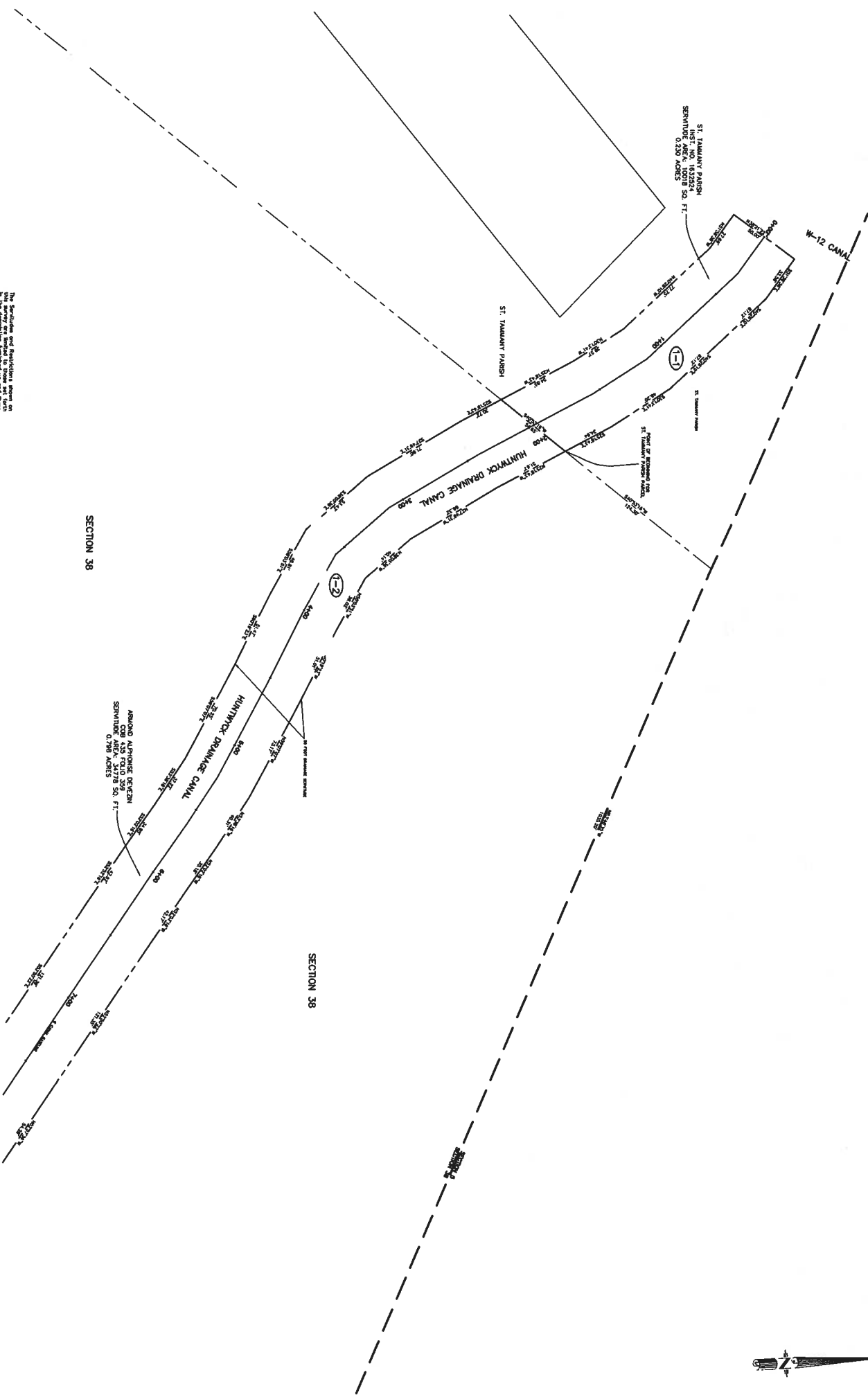
534 WILLIAMS BOULEVARD
E-mail: bformap@bformcorporation.com
(504) 488-8800
Fax: (504) 487-0085
CITY OF KENNER
JEFFERSON PARISH, LOUISIANA, 70002

John A. Teyssandier
REGISTERED PROFESSIONAL LAND SURVEYOR



EXHIBIT "A" CONTINUED

SECTION 38
TOWNSHIP 9 SOUTH - RANGE 14 EAST
GREENSBURG LAND DISTRICT



GENERAL NOTES

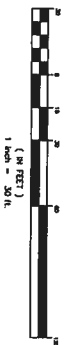
THE LOCATIONS OF INTERSECTIONS AND OTHER ADJACENT PLACES SHOWN ON THIS MAP ARE BASED ON THE LATEST AVAILABLE DATA. THE LOCATIONS OF INTERSECTIONS AND OTHER ADJACENT PLACES SHOWN ON THIS MAP ARE BASED ON THE LATEST AVAILABLE DATA. THE LOCATIONS OF INTERSECTIONS AND OTHER ADJACENT PLACES SHOWN ON THIS MAP ARE BASED ON THE LATEST AVAILABLE DATA.

The boundaries and locations shown on this map are based on the latest available data. The boundaries and locations shown on this map are based on the latest available data. The boundaries and locations shown on this map are based on the latest available data.

SURVEY REFERENCE:

- 1. SECTION OF 13.414 ACRES OF LAND FOR RE-DEVELOPMENT OF LOT 8 OF THE TOWNSHIP OF THE 2ND TOWNSHIP, RANGE 14 EAST, GREENSBURG LAND DISTRICT, LOUISIANA BY A.M. BOTT DATED FEBRUARY 14, 1983.
- 2. LAND DISTRICT, LOUISIANA BY A.M. BOTT DATED FEBRUARY 14, 1983.
- 3. RECORDS ARE BASED ON STATION 974 OBSERVATIONS FROM CORNER STATION 974, GREENSBURG LAND DISTRICT, LOUISIANA BY A.M. BOTT DATED FEBRUARY 14, 1983.

GRAPHIC SCALE



HUNTWYCK DRAINAGE CANAL
SERVITUDE PARCEL MAP
SECTION 38, T 9 S - R 14 E,
GREENSBURG LAND DISTRICT
ST. TAMMANY PARISH, LOUISIANA
DIGITAL ENGINEERING AND IMAGING, INC.

BEM
CORPORATION, L.L.C.
Professional Land Surveyors
534 WILLIAMS BOULEVARD
CITY OF NEW ORLEANS, LOUISIANA 70002

John A. Tappan
REGISTERED PROFESSIONAL LAND SURVEYOR



I certify that this map represents an actual ground survey made by me or under my direction, and it does not conform to the requirements for the Minimum Standards for Property Boundary Surveys as found in Louisiana Administrative Code Title 48, Part 1, Chapter 28, for a 20' or 30' accuracy.

REVISION RECORD	DESCRIPTION	DATE	BY	CHK'D
1	ADDED SHEET 5 TO THE SHEET SET	11-13-09	J.S.T.	
2	ADDED PARCEL INSTRUMENT NUMBERS	01-10-10	J.S.T.	

DATE: MAY 6, 2009
DRAWN BY: K.A.B.
CHECKED BY: J.S.T.
PLANTED BY: 6056
SHEET 1 OF 5

EXHIBIT "A" CONTINUED

**DESCRIPTION OF PARCEL 1-1
THE HUNTWYCK DRAINAGE CANAL SERVITUDE LOCATED IN SECTION
38, TOWNSHIP 9 SOUTH - RANGE 14 EAST, GREENSBURG LAND DISTRICT,
ST. TAMMANY PARISH, LOUISIANA**

**DESCRIPTION OF A 0.230 ACRE PARCEL OF LAND LOCATED IN THE PARISH
OF ST. TAMMANY, STATE OF LOUISIANA IN ACCORDANCE WITH A PLAN
ENTITLED HUNTWYCK DRAINAGE CANAL SERVITUDE PARCEL MAP SHEET
1, DATED MAY 06, 2009 AND REVISED JANUARY 18, 2010.**

SAID 0.230 ACRE PARCEL BEING MORE FULLY DESCRIBED AS FOLLOWS:

**COMMENCING AT AN 1/2" IRON ROD FOUND, SAID POINT BEING THE
CORNER COMMON TO SECTIONS 4, 5 & 38, TOWNSHIP 9 SOUTH - RANGE 14
EAST, GREENSBURG LAND DISTRICT, ST. TAMMANY PARISH, LOUISIANA,
THENCE NORTH 63°31'14" WEST FOR A DISTANCE OF 312.59 FEET TO A
POINT AND CORNER; THENCE NORTH 63°43'57" WEST FOR A DISTANCE OF
748.36 FEET TO A POINT AND CORNER; THENCE NORTH 63°48'35"W FOR A
DISTANCE OF 1035.20 FEET TO A POINT AND CORNER; THENCE SOUTH
40°53'16" WEST FOR A DISTANCE OF 124.30 FEET TO THE POINT OF
BEGINNING.**

**THENCE SOUTH 40°53'16" WEST FOR A DISTANCE OF 54.65 FEET TO A POINT
AND CORNER;**

**THENCE NORTH 25°18'43" WEST FOR A DISTANCE OF 54.85 FEET TO A POINT
AND CORNER;**

**THENCE NORTH 30°13'41" WEST FOR A DISTANCE OF 39.57 FEET TO A POINT
AND CORNER;**

**THENCE NORTH 40°28'10" WEST FOR A DISTANCE OF 77.75 FEET TO A POINT
AND CORNER;**

**THENCE NORTH 51°38'38" WEST FOR A DISTANCE OF 27.69 FEET TO A POINT
AND CORNER;**

**THENCE NORTH 38°21'22" EAST FOR A DISTANCE OF 50.00 FEET TO A POINT
AND CORNER;**

**THENCE SOUTH 51°38'38" EAST FOR A DISTANCE OF 32.58 FEET TO A POINT
AND CORNER;**

**THENCE SOUTH 40°28'10" EAST FOR A DISTANCE OF 87.12 FEET TO A POINT
AND CORNER;**

EXHIBIT "A" CONTINUED

THENCE SOUTH 30°13'41" EAST FOR A DISTANCE OF 46.20 FEET TO A POINT AND CORNER;

THENCE SOUTH 25°18'43" EAST FOR A DISTANCE OF 34.94 FEET TO THE POINT OF BEGINNING.

CONTAINING: 10,018 SQUARE FEET OR 0.230 ACRES OF LAND, MORE OR LESS.

EXHIBIT "A" CONTINUED

**DESCRIPTION OF PARCEL 1-2
THE HUNTWYCK DRAINAGE CANAL SERVITUDE LOCATED IN
SECTION 38, TOWNSHIP 9 SOUTH - RANGE 14 EAST,
GREENSBURG LAND DISTRICT,
ST. TAMMANY PARISH, LOUISIANA**

DESCRIPTION OF A 0.798 ACRE PARCEL OF LAND LOCATED PARISH OF ST. TAMMANY, STATE OF LOUISIANA IN ACCORDANCE WITH A PLAN ENTITLED HUNTWYCK DRAINAGE CANAL SERVITUDE PARCEL MAP SHEETS 1 AND 2, DATED MAY 6, 2009 AND REVISED JANUARY 18, 2010.

SAID 0.798 ACRE PARCEL BEING MORE FULLY DESCRIBED AS FOLLOWS:

COMMENCING AT AN 1/2" IRON ROD FOUND, SAID POINT BEING THE CORNER COMMON TO SECTIONS 4, 5 & 38, TOWNSHIP 9 SOUTH - RANGE 14 EAST, GREENSBURG LAND DISTRICT, ST. TAMMANY PARISH, LOUISIANA, THENCE NORTH 63°31'14" WEST FOR A DISTANCE OF 312.59 FEET TO A POINT AND CORNER; THENCE NORTH 63°43'57" WEST FOR A DISTANCE OF 748.36 FEET TO A POINT AND CORNER; THENCE SOUTH 78°26'25" WEST FOR A DISTANCE OF 488.80 FEET TO THE POINT OF BEGINNING.

THENCE SOUTH 78°26'25" WEST FOR A DISTANCE OF 65.91 FEET TO A POINT AND CORNER;

THENCE NORTH 50°48'15" WEST FOR A DISTANCE OF 59.09 FEET TO A POINT AND CORNER;

THENCE NORTH 52°57'36" WEST FOR A DISTANCE OF 53.39 FEET TO A POINT AND CORNER;

THENCE NORTH 52°50'22" WEST FOR A DISTANCE OF 121.39 FEET TO A POINT AND CORNER;

THENCE NORTH 52°52'16" WEST FOR A DISTANCE OF 42.52 FEET TO A POINT AND CORNER;

THENCE NORTH 52°02'16" WEST FOR A DISTANCE OF 34.85 FEET TO A POINT AND CORNER;

THENCE NORTH 53°38'16" WEST FOR A DISTANCE OF 37.22 FEET TO A POINT AND CORNER;

THENCE NORTH 59°07'07" WEST FOR A DISTANCE OF 70.25 FEET TO A POINT AND CORNER;

EXHIBIT "A" CONTINUED

THENCE NORTH 60°19'23" WEST FOR A DISTANCE OF 51.47 FEET TO A POINT AND CORNER;

THENCE NORTH 58°03'51" WEST FOR A DISTANCE OF 48.81 FEET TO A POINT AND CORNER;

THENCE NORTH 38°05'36" WEST FOR A DISTANCE OF 53.43 FEET TO A POINT AND CORNER;

THENCE NORTH 27°49'31" WEST FOR A DISTANCE OF 71.90 FEET TO A POINT AND CORNER;

THENCE NORTH 25°18'43" WEST FOR A DISTANCE OF 30.72 FEET TO A POINT AND CORNER;

THENCE NORTH 40°53'16" EAST FOR A DISTANCE OF 54.65 FEET TO A POINT AND CORNER;

THENCE SOUTH 25°18'43" EAST FOR A DISTANCE OF 51.67 FEET TO A POINT AND CORNER;

THENCE SOUTH 27°49'31" EAST FOR A DISTANCE OF 66.32 FEET TO A POINT AND CORNER;

THENCE SOUTH 38°05'36" EAST FOR A DISTANCE OF 40.14 FEET TO A POINT AND CORNER;

THENCE SOUTH 58°03'51" EAST FOR A DISTANCE OF 39.02 FEET TO A POINT AND CORNER;

THENCE SOUTH 60°19'23" EAST FOR A DISTANCE OF 51.01 FEET TO A POINT AND CORNER;

THENCE SOUTH 59°07'07" EAST FOR A DISTANCE OF 73.17 FEET TO A POINT AND CORNER;

THENCE SOUTH 53°38'16" EAST FOR A DISTANCE OF 40.31 FEET TO A POINT AND CORNER;

THENCE SOUTH 52°02'16" EAST FOR A DISTANCE OF 35.18 FEET TO A POINT AND CORNER;

THENCE SOUTH 52°52'16" EAST FOR A DISTANCE OF 42.17 FEET TO A POINT AND CORNER;

EXHIBIT "A" CONTINUED

THENCE SOUTH 52°50'22" EAST FOR A DISTANCE OF 121.35 FEET TO A POINT AND CORNER;

THENCE SOUTH 52°57'36" EAST FOR A DISTANCE OF 54.28 FEET TO A POINT AND CORNER;

THENCE SOUTH 50°48'15" EAST FOR A DISTANCE OF 72.13 FEET TO A POINT AND CORNER;

THENCE SOUTH 52°49'17" EAST FOR A DISTANCE OF 29.62 FEET TO THE **POINT OF BEGINNING**.

CONTAINING: 34,778 SQUARE FEET OR 0.798 ACRES OF LAND, MORE OR LESS.

EXHIBIT "A" CONTINUED

**DESCRIPTION OF PARCEL 3-1
THE HUNTWYCK DRAINAGE CANAL SERVITUDE LOCATED IN SECTION
38, TOWNSHIP 9 SOUTH - RANGE 14 EAST,
GREENSBURG LAND DISTRICT,
ST. TAMMANY PARISH, LOUISIANA**

DESCRIPTION OF A 0.323 ACRE PARCEL OF LAND LOCATED IN THE PARISH OF ST. TAMMANY, STATE OF LOUISIANA IN ACCORDANCE WITH A PLAN ENTITLED HUNTWYCK DRAINAGE CANAL SERVITUDE PARCEL MAP, SHEET 3, DATED MAY 06, 2009 AND REVISED JANUARY 18, 2010.

SAID 0.323 ACRE PARCEL BEING MORE FULLY DESCRIBED AS FOLLOWS:

COMMENCING AT AN 1/2" IRON ROD FOUND, SAID POINT BEING THE CORNER COMMON TO SECTIONS 4, 5 & 38, TOWNSHIP 9 SOUTH - RANGE 14 EAST, GREENSBURG LAND DISTRICT, ST. TAMMANY PARISH, LOUISIANA, THENCE NORTH 63°31'14" WEST FOR A DISTANCE OF 312.59 FEET TO A POINT AND CORNER; THENCE NORTH 63°43'57" WEST FOR A DISTANCE OF 748.36 FEET TO A POINT AND CORNER; THENCE SOUTH 78°26'25" WEST FOR A DISTANCE OF 488.80 FEET TO THE POINT OF BEGINNING.

THENCE SOUTH 52°49'17" EAST FOR A DISTANCE OF 6.76 FEET TO A POINT AND CORNER;

THENCE SOUTH 45°52'02" EAST FOR A DISTANCE OF 73.70 FEET TO A POINT AND CORNER;

THENCE SOUTH 45°27'50" EAST FOR A DISTANCE OF 51.47 FEET TO A POINT AND CORNER;

THENCE SOUTH 46°36'46" EAST FOR A DISTANCE OF 51.36 FEET TO A POINT AND CORNER;

THENCE SOUTH 08°46'31" WEST FOR A DISTANCE OF 5.97 FEET TO A POINT AND CORNER;

THENCE SOUTH 36°28'29" EAST FOR A DISTANCE OF 85.00 FEET TO A POINT AND CORNER;

THENCE SOUTH 41°34'43" WEST FOR A DISTANCE OF 42.32 FEET TO A POINT AND CORNER;

THENCE NORTH 38°26'57" WEST FOR A DISTANCE OF 4.64 FEET TO A POINT AND CORNER;

EXHIBIT "A" CONTINUED

THENCE NORTH 41°14'44" WEST FOR A DISTANCE OF 40.52 FEET TO A POINT AND CORNER;

THENCE NORTH 36°50'35" WEST FOR A DISTANCE OF 45.49 FEET TO A POINT AND CORNER;

THENCE NORTH 46°36'46" WEST FOR A DISTANCE OF 50.50 FEET TO A POINT AND CORNER;

THENCE NORTH 45°27'50" WEST FOR A DISTANCE OF 51.79 FEET TO A POINT AND CORNER;

THENCE NORTH 45°52'02" WEST FOR A DISTANCE OF 70.48 FEET TO A POINT AND CORNER;

THENCE NORTH 52°49'17" WEST FOR A DISTANCE OF 34.22 FEET TO A POINT AND CORNER;

THENCE NORTH 50°48'15" WEST FOR A DISTANCE OF 12.98 FEET TO A POINT AND CORNER;

THENCE NORTH 78°26'25" EAST FOR A DISTANCE OF 65.91 FEET TO THE **POINT OF BEGINNING.**

CONTAINING: 14057 SQUARE FEET OR 0.323 ACRES OF LAND, MORE OR LESS.

EXHIBIT "A" CONTINUED

**DESCRIPTION OF PARCEL 3-2
THE HUNTWYCK DRAINAGE CANAL SERVITUDE LOCATED IN
SECTION 38, TOWNSHIP 9 SOUTH - RANGE 14 EAST,
GREENSBURG LAND DISTRICT,
ST. TAMMANY PARISH, LOUISIANA**

DESCRIPTION OF A 0.011 ACRE PARCEL OF LAND LOCATED PARISH OF ST. TAMMANY, STATE OF LOUISIANA IN ACCORDANCE WITH A PLAN ENTITLED HUNTWYCK DRAINAGE CANAL SERVITUDE PARCEL MAP, SHEET 3, DATED MAY 6, 2009 AND REVISED JANUARY 18, 2010.

SAID 0.011 ACRE PARCEL BEING MORE FULLY DESCRIBED AS FOLLOWS:

COMMENCING AT AN 1/2" IRON ROD FOUND, SAID POINT BEING THE CORNER COMMON TO SECTIONS 4, 5 & 38, TOWNSHIP 9 SOUTH - RANGE 14 EAST, THENCE NORTH 63°31'14" WEST FOR A DISTANCE OF 312.59 FEET TO A POINT AND CORNER; THENCE NORTH 63°43'57" WEST FOR A DISTANCE OF 748.36 FEET TO A POINT AND CORNER; THENCE SOUTH 78°26'25" WEST FOR A DISTANCE OF 488.80 FEET TO A POINT AND CORNER; THENCE SOUTH 52°49'17" EAST FOR A DISTANCE OF 6.76 FEET TO A POINT AND CORNER; THENCE SOUTH 45°52'02" EAST FOR A DISTANCE OF 73.70 FEET TO A POINT AND CORNER; THENCE SOUTH 45°27'50" EAST FOR A DISTANCE OF 51.47 FEET TO A POINT AND CORNER; THENCE SOUTH 46°36'46" EAST FOR A DISTANCE OF 51.36 FEET TO A POINT AND CORNER; THENCE SOUTH 08°46'31" WEST FOR A DISTANCE OF 5.97 FEET TO A POINT AND CORNER; THENCE SOUTH 36°28'29" EAST FOR A DISTANCE OF 85.00 FEET TO THE POINT OF BEGINNING.

THENCE SOUTH 41°34'43" WEST FOR A DISTANCE OF 8.31 FEET TO A POINT AND CORNER;

THENCE NORTH 36°28'29" WEST FOR A DISTANCE OF 85.00 FEET TO A POINT AND CORNER;

THENCE NORTH 08°46'31" EAST FOR A DISTANCE OF 5.97 FEET TO A POINT AND CORNER;

THENCE SOUTH 46°36'46" EAST FOR A DISTANCE OF 2.90 FEET TO A POINT AND CORNER;

THENCE SOUTH 36°50'35" EAST FOR A DISTANCE OF 47.84 FEET TO A POINT AND CORNER;

THENCE SOUTH 41°14'44" EAST FOR A DISTANCE OF 36.91 FEET TO THE POINT OF BEGINNING.

CONTAINING: 488 SQUARE FEET OR 0.011 ACRES OF LAND, MORE OR LESS.

EXHIBIT "A" CONTINUED

**DESCRIPTION OF PARCEL 3-3
THE HUNTWYCK DRAINAGE CANAL SERVITUDE LOCATED IN
SECTION 38, TOWNSHIP 9 SOUTH - RANGE 14 EAST,
GREENSBURG LAND DISTRICT,
ST. TAMMANY PARISH, LOUISIANA**

DESCRIPTION OF A 0.071 ACRE PARCEL OF LAND LOCATED IN THE PARISH OF ST. TAMMANY, STATE OF LOUISIANA IN ACCORDANCE WITH A PLAN ENTITLED HUNTWYCK DRAINAGE CANAL SERVITUDE PARCEL MAP, SHEET 3, DATED MAY 06, 2009 AND REVISED JANUARY 18, 2010.

SAID 0.071 ACRE PARCEL BEING MORE FULLY DESCRIBED AS FOLLOWS:

COMMENCING AT AN 1/2" IRON ROD FOUND, SAID POINT BEING THE CORNER COMMON TO SECTIONS 4, 5 & 38, TOWNSHIP 9 SOUTH - RANGE 14 EAST, THENCE NORTH 63°31'14" WEST FOR A DISTANCE OF 312.59 FEET TO A POINT AND CORNER; THENCE SOUTH 19°15'27" WEST FOR A DISTANCE OF 132.23 FEET TO A POINT AND CORNER; THENCE NORTH 70°52'48" WEST FOR A DISTANCE OF 417.09 FEET TO A POINT AND CORNER; THENCE SOUTH 89°42'01" WEST FOR A DISTANCE OF 69.90 FEET TO A POINT AND CORNER; THENCE SOUTH 84°27'40" WEST FOR A DISTANCE OF 54.51 FEET TO A POINT AND CORNER; THENCE SOUTH 68°31'44" WEST FOR A DISTANCE OF 93.50 FEET TO A POINT AND CORNER; THENCE SOUTH 68°31'44" WEST FOR A DISTANCE OF 118.01 FEET TO A POINT AND CORNER; THENCE SOUTH 30°57'31" WEST FOR A DISTANCE OF 110.19 FEET TO THE POINT OF BEGINNING;

THENCE SOUTH 58°31'44" WEST FOR A DISTANCE OF 9.30 FEET TO A POINT AND CORNER;

THENCE NORTH 49°21'30" WEST FOR A DISTANCE OF 10.51 FEET TO A POINT AND CORNER;

THENCE NORTH 49°21'30" WEST FOR A DISTANCE OF 5.48 FEET TO A POINT AND CORNER;

THENCE NORTH 44°20'43" WEST FOR A DISTANCE OF 40.59 FEET TO A POINT AND CORNER;

THENCE NORTH 40°41'11" WEST FOR A DISTANCE OF 61.67 FEET TO A POINT AND CORNER;

THENCE NORTH 34°59'38" WEST FOR A DISTANCE OF 65.23 FEET TO A POINT AND CORNER;

THENCE NORTH 36°53'23" WEST FOR A DISTANCE OF 32.53 FEET TO A POINT AND CORNER;

EXHIBIT "A" CONTINUED

THENCE NORTH $41^{\circ}34'43''$ EAST FOR A DISTANCE OF 16.60 FEET TO A POINT AND CORNER;

THENCE SOUTH $36^{\circ}14'22''$ EAST FOR A DISTANCE OF 185.67 FEET TO A POINT AND CORNER;

THENCE SOUTH $46^{\circ}34'47''$ EAST FOR A DISTANCE OF 34.14 FEET TO THE **POINT OF BEGINNING.**

CONTAINING: 3112 SQUARE FEET OR 0.071 ACRES OF LAND, MORE OR LESS.

EXHIBIT "A" CONTINUED

**DESCRIPTION OF PARCEL 3-4
THE HUNTWYCK DRAINAGE CANAL SERVITUDE LOCATED IN SECTION 38,
TOWNSHIP 9 SOUTH - RANGE 14 EAST,
GREENSBURG LAND DISTRICT,
ST. TAMMANY PARISH, LOUISIANA**

DESCRIPTION OF A 0.075 ACRE PARCEL OF LAND LOCATED IN THE PARISH OF ST. TAMMANY, STATE OF LOUISIANA IN ACCORDANCE WITH A PLAN ENTITLED HUNTWYCK DRAINAGE CANAL SERVITUDE PARCEL MAP SHEET 3, DATED MAY 06, 2009 AND REVISED JANUARY 18, 2010.

SAID 0.075 ACRE PARCEL BEING MORE FULLY DESCRIBED AS FOLLOWS:

COMMENCING AT AN 1/2" IRON ROD FOUND, SAID POINT BEING THE CORNER COMMON TO SECTIONS 4, 5 & 38, TOWNSHIP 9 SOUTH - RANGE 14 EAST, THENCE NORTH 63°31'14" WEST FOR A DISTANCE OF 312.59 FEET TO A POINT AND CORNER; THENCE SOUTH 19°15'27" WEST FOR A DISTANCE OF 132.23 FEET TO A POINT AND CORNER; THENCE NORTH 70°52'48" WEST FOR A DISTANCE OF 417.09 FEET TO A POINT AND CORNER; THENCE SOUTH 89°42'01" WEST FOR A DISTANCE OF 69.90 FEET TO A POINT AND CORNER; THENCE SOUTH 84°27'40" WEST FOR A DISTANCE OF 54.51 FEET TO A POINT AND CORNER; THENCE SOUTH 68°31'44" WEST FOR A DISTANCE OF 93.50 FEET TO A POINT AND CORNER; THENCE SOUTH 68°31'44" WEST FOR A DISTANCE OF 118.01 FEET TO THE POINT OF BEGINNING;

THENCE SOUTH 30°57'31" WEST FOR A DISTANCE OF 110.19 FEET TO A POINT AND CORNER;

THENCE NORTH 46°34'47" WEST FOR A DISTANCE OF 34.14 FEET TO A POINT AND CORNER;

THENCE NORTH 36°14'22" WEST FOR A DISTANCE OF 185.67 FEET TO A POINT AND CORNER;

THENCE NORTH 41°34'43" EAST FOR A DISTANCE OF 9.65 FEET TO A POINT AND CORNER;

THENCE SOUTH 38°26'57" EAST FOR A DISTANCE OF 8.66 FEET TO A POINT AND CORNER;

THENCE SOUTH 35°01'45" EAST FOR A DISTANCE OF 40.63 FEET TO A POINT AND CORNER;

THENCE SOUTH 34°59'04" EAST FOR A DISTANCE OF 53.29 FEET TO A POINT AND CORNER;

EXHIBIT "A" CONTINUED

THENCE SOUTH 40°41'11" EAST FOR A DISTANCE OF 59.65 FEET TO A POINT AND CORNER;

THENCE SOUTH 44°20'43" EAST FOR A DISTANCE OF 38.70 FEET TO A POINT AND CORNER;

THENCE SOUTH 49°21'30" EAST FOR A DISTANCE OF 4.85 FEET TO A POINT AND CORNER;

THENCE NORTH 30°57'31" EAST FOR A DISTANCE OF 95.32 FEET TO A POINT AND CORNER;

THENCE SOUTH 41°13'09" EAST FOR A DISTANCE OF 10.50 FEET TO THE **POINT OF BEGINNING**.

CONTAINING: 3288 SQUARE FEET OR 0.075 ACRES OF LAND, MORE OR LESS.

EXHIBIT "A" CONTINUED

**DESCRIPTION OF PARCEL 3-5
THE HUNTWYCK DRAINAGE CANAL SERVITUDE LOCATED IN
SECTION 38, TOWNSHIP 9 SOUTH - RANGE 14 EAST,
GREENSBURG LAND DISTRICT,
ST. TAMMANY PARISH, LOUISIANA**

DESCRIPTION OF A 0.028 ACRE PARCEL OF LAND LOCATED IN THE PARISH OF ST. TAMMANY, STATE OF LOUISIANA IN ACCORDANCE WITH A PLAN ENTITLED HUNTWYCK DRAINAGE CANAL SERVITUDE PARCEL MAP SHEET 3, DATED MAY 06, 2009 AND REVISED JANUARY 18, 2010.

SAID 0.028 ACRE PARCEL BEING MORE FULLY DESCRIBED AS FOLLOWS:

COMMENCING AT AN 1/2" IRON ROD FOUND, SAID POINT BEING THE CORNER COMMON TO SECTIONS 4, 5 & 38, TOWNSHIP 9 SOUTH - RANGE 14 EAST, THENCE NORTH 63°31'14" WEST FOR A DISTANCE OF 312.59 FEET TO A POINT AND CORNER; THENCE SOUTH 19°15'27" WEST FOR A DISTANCE OF 132.23 FEET TO A POINT AND CORNER; THENCE NORTH 70°52'48" WEST FOR A DISTANCE OF 417.09 FEET TO A POINT AND CORNER; THENCE SOUTH 89°42'01" WEST FOR A DISTANCE OF 69.90 FEET TO A POINT AND CORNER; THENCE SOUTH 84°27'40" WEST FOR A DISTANCE OF 54.51 FEET TO A POINT AND CORNER; THENCE SOUTH 68°31'44" WEST FOR A DISTANCE OF 93.50 FEET TO THE **POINT OF BEGINNING;**

THENCE SOUTH 68°31'44" WEST FOR A DISTANCE OF 118.01 FEET TO A POINT AND CORNER;

THENCE NORTH 41°13'09" WEST FOR A DISTANCE OF 10.50 FEET TO A POINT AND CORNER;

THENCE NORTH 30°57'31" EAST FOR A DISTANCE OF 0.19 FEET TO A POINT AND CORNER;

THENCE NORTH 68°31'44" EAST FOR A DISTANCE OF 125.25 FEET TO A POINT AND CORNER;

THENCE SOUTH 00°28'16" EAST FOR A DISTANCE OF 10.71 FEET TO THE **POINT OF BEGINNING.**

CONTAINING: 1217 SQUARE FEET OR 0.028 ACRES OF LAND, MORE OR LESS.

EXHIBIT "A" CONTINUED

**DESCRIPTION OF PARCEL 3-6
THE HUNTWYCK DRAINAGE CANAL SERVITUDE LOCATED IN
SECTION 38, TOWNSHIP 9 SOUTH - RANGE 14 EAST,
GREENSBURG LAND DISTRICT,
ST. TAMMANY PARISH, LOUISIANA**

DESCRIPTION OF A 0.053 ACRE PARCEL OF LAND LOCATED PARISH OF ST. TAMMANY, STATE OF LOUISIANA IN ACCORDANCE WITH A PLAN ENTITLED HUNTWYCK DRAINAGE CANAL SERVITUDE PARCEL MAP, SHEET 3, DATED MAY 6, 2009 AND REVISED JANUARY 18, 2010.

SAID 0.053 ACRE PARCEL BEING MORE FULLY DESCRIBED AS FOLLOWS:

COMMENCING AT AN 1/2" IRON ROD FOUND, SAID POINT BEING THE CORNER COMMON TO SECTIONS 4, 5 & 38, TOWNSHIP 9 SOUTH - RANGE 14 EAST, THENCE NORTH 63°31'14" WEST FOR A DISTANCE OF 312.59 FEET TO A POINT AND CORNER; THENCE SOUTH 19°15'27" WEST FOR A DISTANCE OF 132.23 FEET TO A POINT AND CORNER; THENCE NORTH 70°52'48" WEST FOR A DISTANCE OF 417.09 FEET TO THE POINT OF BEGINNING;

THENCE SOUTH 89°42'01" WEST FOR A DISTANCE OF 69.90 FEET TO A POINT AND CORNER;

THENCE SOUTH 84°27'40" WEST FOR A DISTANCE OF 54.51 FEET TO A POINT AND CORNER;

THENCE SOUTH 68°31'44" WEST FOR A DISTANCE OF 93.50 FEET TO A POINT AND CORNER;

THENCE NORTH 00°28'16" WEST FOR A DISTANCE OF 10.71 FEET TO A POINT AND CORNER;

THENCE NORTH 68°31'44" EAST FOR A DISTANCE OF 105.31 FEET TO A POINT AND CORNER;

THENCE NORTH 89°42'01" EAST FOR A DISTANCE OF 116.55 FEET TO A POINT AND CORNER;

THENCE SOUTH 18°14'31" WEST FOR A DISTANCE OF 10.55 FEET TO THE POINT OF BEGINNING.

CONTAINING: 2,305 SQUARE FEET OR 0.053 ACRES OF LAND, MORE OR LESS.

EXHIBIT "A" CONTINUED

**DESCRIPTION OF PARCEL 3-7
THE HUNTWYCK DRAINAGE CANAL SERVITUDE LOCATED IN
SECTION 38, TOWNSHIP 9 SOUTH - RANGE 14 EAST,
GREENSBURG LAND DISTRICT,
ST. TAMMANY PARISH, LOUISIANA**

DESCRIPTION OF A 0.048 ACRE PARCEL OF LAND LOCATED PARISH OF ST. TAMMANY, STATE OF LOUISIANA IN ACCORDANCE WITH A PLAN ENTITLED HUNTWYCK DRAINAGE CANAL SERVITUDE PARCEL MAP, SHEET 3, DATED MAY 6, 2009 AND REVISED JANUARY 18, 2010.

SAID 0.048 ACRE PARCEL BEING MORE FULLY DESCRIBED AS FOLLOWS:

COMMENCING AT AN 1/2" IRON ROD FOUND, SAID POINT BEING THE CORNER COMMON TO SECTIONS 4, 5 & 38, TOWNSHIP 9 SOUTH - RANGE 14 EAST, THENCE NORTH 63°31'14" WEST FOR A DISTANCE OF 312.59 FEET TO A POINT AND CORNER; THENCE SOUTH 19°15'27" WEST FOR A DISTANCE OF 132.23 FEET TO A POINT AND CORNER; THENCE NORTH 70°52'48" WEST FOR A DISTANCE OF 417.09 FEET TO THE POINT OF BEGINNING;

THENCE NORTH 18°14'31" EAST FOR A DISTANCE OF 10.00 FEET TO A POINT AND CORNER;

THENCE SOUTH 70°52'48" EAST FOR A DISTANCE OF 209.47 FEET TO A POINT AND CORNER;

THENCE SOUTH 19°15'27" WEST FOR A DISTANCE OF 10.00 FEET TO A POINT AND CORNER;

THENCE NORTH 70°52'48" WEST FOR A DISTANCE OF 209.32 TO A THE POINT OF BEGINNING.

CONTAINING: 2,094 SQUARE FEET OR 0.048 ACRES OF LAND, MORE OR LESS.

EXHIBIT "A" CONTINUED

**DESCRIPTION OF PARCEL 4-1
THE HUNTWYCK DRAINAGE CANAL SERVITUDE LOCATED IN SECTION
38, TOWNSHIP 9 SOUTH - RANGE 14 EAST, GREENSBURG LAND DISTRICT,
ST. TAMMANY PARISH, LOUISIANA**

**DESCRIPTION OF A 0.048 ACRE PARCEL OF LAND LOCATED IN THE PARISH
OF ST. TAMMANY, STATE OF LOUISIANA IN ACCORDANCE WITH A PLAN
ENTITLED HUNTWYCK DRAINAGE CANAL SERVITUDE PARCEL MAP, SHEET
4, DATED MAY 06, 2009 AND REVISED JANUARY 18, 2010.**

SAID 0.048 ACRE PARCEL BEING MORE FULLY DESCRIBED AS FOLLOWS:

**COMMENCING AT AN 1/2" IRON ROD FOUND, SAID POINT BEING THE
CORNER COMMON TO SECTIONS 4, 5 & 38, TOWNSHIP 9 SOUTH - RANGE 14
EAST, THENCE NORTH 63°31'14" WEST FOR A DISTANCE OF 312.59 FEET TO A
POINT AND CORNER; THENCE SOUTH 19°15'27" WEST FOR A DISTANCE OF
122.23 FEET TO THE POINT OF BEGINNING;**

**THENCE SOUTH 70°52'48" EAST FOR A DISTANCE OF 207.77 FEET TO A POINT
AND CORNER;**

**THENCE SOUTH 19°15'27" WEST FOR A DISTANCE OF 10.00 FEET TO A POINT
AND CORNER;**

**THENCE NORTH 70°52'48" WEST FOR A DISTANCE OF 207.77 FEET TO A
POINT AND CORNER;**

**THENCE NORTH 19°15'27" EAST FOR A DISTANCE OF 10.00 FEET TO THE
POINT OF BEGINNING.**

**CONTAINING: 2,078 SQUARE FEET OR 0.048 ACRES OF LAND, MORE OR
LESS.**

EXHIBIT "A" CONTINUED

DESCRIPTION OF PARCEL 4-2
THE HUNTWYCK DRAINAGE CANAL SERVITUDE LOCATED IN SECTION
38, TOWNSHIP 9 SOUTH - RANGE 14 EAST, GREENSBURG LAND DISTRICT,
ST. TAMMANY PARISH, LOUISIANA

DESCRIPTION OF A 0.160 ACRE PARCEL OF LAND LOCATED IN THE PARISH OF ST. TAMMANY, STATE OF LOUISIANA IN ACCORDANCE WITH A PLAN ENTITLED HUNTWYCK DRAINAGE CANAL SERVITUDE PARCEL MAP, SHEET 4, DATED MAY 06, 2009 AND REVISED JANUARY 18, 2010.

SAID 0.160 ACRE PARCEL BEING MORE FULLY DESCRIBED AS FOLLOWS:

COMMENCING AT A 1/2" IRON ROD FOUND, SAID POINT BEING THE CORNER COMMON TO SECTIONS 4, 5 & 38, TOWNSHIP 9 SOUTH - RANGE 14 EAST, THENCE SOUTH 19°47'51" WEST FOR A DISTANCE OF 25.71 FEET TO A POINT AND CORNER; THENCE NORTH 63°31'14" WEST FOR A DISTANCE OF 147.67 FEET TO THE POINT OF BEGINNING;

THENCE SOUTH 38°40'33" EAST FOR A DISTANCE OF 31.17 FEET TO A POINT AND CORNER;

THENCE SOUTH 56°08'47" WEST FOR A DISTANCE OF 60.92 FEET TO A POINT AND CORNER;

THENCE NORTH 38°40'33" WEST FOR A DISTANCE OF 78.51 FEET TO A POINT AND CORNER;

THENCE NORTH 51°19'27" EAST FOR A DISTANCE OF 36.41 FEET TO A POINT AND CORNER;

THENCE NORTH 63°31'14" WEST FOR A DISTANCE OF 81.68 FEET TO A POINT AND CORNER;

THENCE SOUTH 19°15'27" WEST FOR A DISTANCE OF 103.80 FEET TO A POINT AND CORNER;

THENCE NORTH 70°52'48" WEST FOR A DISTANCE OF 25.00 FEET TO A POINT AND CORNER;

THENCE NORTH 19°15'27" EAST FOR A DISTANCE OF 10.00 FEET TO A POINT AND CORNER;

THENCE SOUTH 70°52'48" EAST FOR A DISTANCE OF 15.00 FEET TO A POINT AND CORNER;

EXHIBIT "A" CONTINUED

THENCE NORTH $19^{\circ}15'27''$ EAST FOR A DISTANCE OF 105.17 FEET TO A POINT AND CORNER;

THENCE SOUTH $63^{\circ}31'14''$ EAST FOR A DISTANCE OF 150.83 FEET TO A POINT AND CORNER;

THENCE SOUTH $26^{\circ}28'46''$ WEST FOR A DISTANCE OF 10.00 FEET TO **THE POINT OF BEGINNING.**

CONTAINING: 6980 SQUARE FEET OR 0.160 ACRES OF LAND, MORE OR LESS.

EXHIBIT "A" CONTINUED

**DESCRIPTION OF PARCEL 5-1
THE HUNTWYCK DRAINAGE CANAL SERVITUDE LOCATED IN SECTION
38, TOWNSHIP 9 SOUTH - RANGE 14 EAST, GREENSBURG LAND DISTRICT,
ST. TAMMANY PARISH, LOUISIANA**

**DESCRIPTION OF A 0.105 ACRE PARCEL OF LAND LOCATED IN THE PARISH
OF ST. TAMMANY, STATE OF LOUISIANA IN ACCORDANCE WITH A PLAN
ENTITLED HUNTWYCK DRAINAGE CANAL SERVITUDE PARCEL MAP SHEET
5, DATED MAY 06, 2009 AND REVISED JANUARY 18, 2010.**

SAID 0.105 ACRE PARCEL BEING MORE FULLY DESCRIBED AS FOLLOWS:

**COMMENCING AT AN 1/2" IRON ROD FOUND, SAID POINT LOCATED AT
THE SOUTHWEST CORNER OF LOT 575 ALSO BEING THE SOUTHWEST
CORNER OF HUNTWYCK VILLAGE SUBDIVISION, PHASE VII LOCATED IN
SECTIONS 4, 5, & 38, TOWNSHIP 9 SOUTH - RANGE 14 EAST, GREENSBURG
LAND DISTRICT, ST. TAMMANY PARISH, LOUISIANA, THENCE
NORTH 03°10'22" EAST FOR A DISTANCE OF 139.34 FEET TO THE POINT OF
BEGINNING.**

**THENCE NORTH 86°55'55" WEST TO THE W-12 DRAINAGE CANAL
SERVITUDE FOR A DISTANCE OF 460.10 FEET TO A POINT AND CORNER;**

**THENCE NORTH 43°05'54" EAST ALONG W-12 DRAINAGE CANAL SERVITUDE
FOR A DISTANCE OF 13.06 FEET TO A POINT AND CORNER;**

**THENCE SOUTH 86°55'55" EAST FOR A DISTANCE OF 451.72 FEET TO A POINT
AND CORNER;**

**THENCE SOUTH 03°10'22" WEST FOR A DISTANCE OF 10.00 FEET TO THE
POINT OF BEGINNING.**

**CONTAINING: 4559 SQUARE FEET OR 0.105 ACRES OF LAND, MORE OR
LESS.**

EXHIBIT "A" CONTINUED

**DESCRIPTION OF PARCEL 5-2
THE 10 FOOT DRAINAGE SERVITUDE LOCATED IN SECTION 38,
TOWNSHIP 9 SOUTH - RANGE 14 EAST, GREENSBURG LAND DISTRICT,
ST. TAMMANY PARISH, LOUISIANA**

DESCRIPTION OF A 0.014 ACRE PARCEL OF LAND LOCATED IN THE PARISH OF ST. TAMMANY, STATE OF LOUISIANA IN ACCORDANCE WITH A PLAN ENTITLED HUNTWYCK DRAINAGE CANAL SERVITUDE PARCEL MAP SHEET 5, DATED MAY 06, 2009 AND REVISED JANUARY 18, 2010.

SAID 0.014 ACRE PARCEL BEING MORE FULLY DESCRIBED AS FOLLOWS:

COMMENCING AT AN 1/2" IRON ROD FOUND, SAID POINT LOCATED AT THE SOUTHWEST CORNER OF LOT 575 ALSO BEING THE SOUTHWEST CORNER OF HUNTWYCK VILLAGE SUBDIVISION, PHASE VII LOCATED IN SECTIONS 4, 5, & 38, TOWNSHIP 9 SOUTH - RANGE 14 EAST, GREENSBURG LAND DISTRICT, ST. TAMMANY PARISH, LOUISIANA, THENCE NORTH 03°10'22" EAST FOR A DISTANCE OF 144.34 FEET TO THE POINT OF BEGINNING.

THENCE NORTH 03°10'22" EAST FOR A DISTANCE OF 5.00 FEET TO A POINT AND CORNER;

THENCE SOUTH 86°55'55" EAST FOR A DISTANCE OF 119.92 FEET TO A POINT AND CORNER;

THENCE, ALONG A NON-TANGENT CURVE TO THE LEFT HAVING A RADIUS OF 50.00 FEET, A CENTRAL ANGLE OF 5°44'21.12", THE LONG CHORD OF WHICH BEARS SOUTH 00°11'55" WEST FOR A DISTANCE OF 5.01 FEET AND FOR AN ARC LENGTH OF 5.01 FEET TO A POINT;

THENCE NORTH 86°55'55" WEST FOR A DISTANCE OF 120.17 FEET THE POINT OF BEGINNING.

CONTAINING: 600 SQUARE FEET OR 0.014 ACRES OF LAND, MORE OR LESS.

EXHIBIT "A" CONTINUED

**DESCRIPTION OF PARCEL 5-3
A 10 FOOT DRAINAGE SERVITUDE LOCATED IN SECTION 38, TOWNSHIP
9 SOUTH - RANGE 14 EAST, GREENSBURG LAND DISTRICT, ST.
TAMMANY PARISH, LOUISIANA**

DESCRIPTION OF A 0.014 ACRE PARCEL OF LAND LOCATED IN THE PARISH OF ST. TAMMANY, STATE OF LOUISIANA IN ACCORDANCE WITH A PLAN ENTITLED HUNTWYCK DRAINAGE CANAL SERVITUDE PARCEL MAP, SHEET 5, DATED MAY 06, 2009 AND REVISED JANUARY 18, 2010.

SAID 0.014 ACRE PARCEL BEING MORE FULLY DESCRIBED AS FOLLOWS:

COMMENCING AT AN 1/2" IRON ROD FOUND, SAID POINT LOCATED AT THE SOUTHWEST CORNER OF LOT 575 ALSO BEING THE SOUTHWEST CORNER OF HUNTWYCK VILLAGE SUBDIVISION, PHASE VII LOCATED IN SECTIONS 4, 5, & 38, TOWNSHIP 9 SOUTH - RANGE 14 EAST, GREENSBURG LAND DISTRICT, ST. TAMMANY PARISH, LOUISIANA, THENCE NORTH 03°10'22" EAST FOR A DISTANCE OF 139.34 FEET TO THE POINT OF BEGINNING.

THENCE NORTH 03°10'22" EAST FOR A DISTANCE OF 5.00 FEET TO A POINT AND CORNER;

THENCE SOUTH 86°55'55" EAST FOR A DISTANCE OF 120.16 FEET TO A POINT AND CORNER;

THENCE, ALONG A NON-TANGENT CURVE TO THE LEFT HAVING A RADIUS OF 50.00 FEET, A CENTRAL ANGLE OF 5°44'21.12", THE LONG CHORD OF WHICH BEARS SOUTH 05°56'16" WEST FOR A DISTANCE OF 5.01 FEET AND FOR AN ARC LENGTH OF 5.01 FEET TO A POINT;

THENCE NORTH 86°55'55" WEST FOR A DISTANCE OF 119.92 FEET THE POINT OF BEGINNING.

CONTAINING: 600 SQUARE FEET OR 0.014 ACRES OF LAND, MORE OR LESS.