

ST. TAMMANY PARISH COUNCIL

ORDINANCE

ORDINANCE CALENDAR NO: 4765

ORDINANCE COUNCIL SERIES NO: _____

COUNCIL SPONSOR: MR. GROBY

PROVIDED BY: COUNCIL OFFICE

INTRODUCED BY: MR. STEFANCIK

SECONDED BY: MR. ARTIGUE

ON THE 5 DAY OF APRIL , 2012

ORDINANCE TO AMEND PARISH CODE, CHAPTER 20 ROADS AND BRIDGES, ARTICLE III, ROAD LIGHTING DISTRICTS, SECTION 20-006.00 DISTRICT NO. 6, TO AMEND THE BOUNDARIES THEREOF.

WHEREAS, St. Tammany Parish Lighting District No. 6 was created and boundaries established pursuant to Ordinance No. 83-574 and thereafter amended by Ordinance Nos. 92-1627 and 00-0157, said ordinances being codified in the Parish Code of Ordinances as section 20-206.00; and

WHEREAS, there is a need to expand the boundaries of Lighting District No. 6 to include a portion of the Louisiana Highway 1088 Right-of-Way near, and including, the entirety of its interchange with I-12 and proceeding a certain distance along La. Hwy. 1088 generally northeast of I-12; and

WHEREAS, attached as Exhibit "A" is a map showing the proposed boundaries of Lighting District No. 6 as amended herein.

THE PARISH OF ST. TAMMANY HEREBY ORDAINS: that the boundaries of Lighting District No. 6 are hereby amended to include certain portions of the Louisiana Highway 1088 Right-of-Way, all as more fully shown on the attached Exhibit.

BE IT FURTHER ORDAINED that Section 20-206.00 of the Parish Code of Ordinances be amended as follows:

There is hereby created St. Tammany Parish Lighting District No. 6. The boundaries of such district shall be encompass only those areas of Ward 4 (as described in this Code of Ordinances in Chapter 2, Section 2-017.00) located in former Parish Police Jury District 7 as it existed on of August 20, 1992, less and except any portion or portions thereof situated within any incorporated area thereof at the time of District creation.

In addition, the boundaries of the District shall include a portion of the Louisiana Highway 1088 Right-of-Way, in its entirety and including all of the area of its interchange with Interstate Highway 12 (I-12), beginning at its intersection with Loretta Drive and proceeding northeast to its intersection with an imaginary line being the eastern-most end of Section 26, in Township 7 South, Range 12 East.

REPEAL: All ordinances or parts of Ordinances in conflict herewith are hereby repealed.

SEVERABILITY: If any provision of this Ordinance shall be held to be invalid, such invalidity shall not affect other provisions herein which can be given effect without the invalid provision and to this end the provisions of this Ordinance are hereby declared to be severable.

EFFECTIVE DATE: This Ordinance shall become effective fifteen (15) days after adoption.

MOVED FOR ADOPTION BY: _____ SECONDED BY: _____

WHEREUPON THIS ORDINANCE WAS SUBMITTED TO A VOTE AND RESULTED IN THE FOLLOWING:

YEAS: _____

NAYS: _____

ABSTAIN: _____

ABSENT: _____

THIS ORDINANCE WAS DECLARED DULY ADOPTED AT A REGULAR MEETING OF THE PARISH COUNCIL ON THE 3 DAY OF MAY, 2012; AND BECOMES ORDINANCE COUNCIL SERIES NO _____.

MARTIN W. GOULD, JR., COUNCIL CHAIRMAN

ATTEST:

THERESA L. FORD, COUNCIL CLERK

PATRICIA P. BRISTER, PARISH PRESIDENT

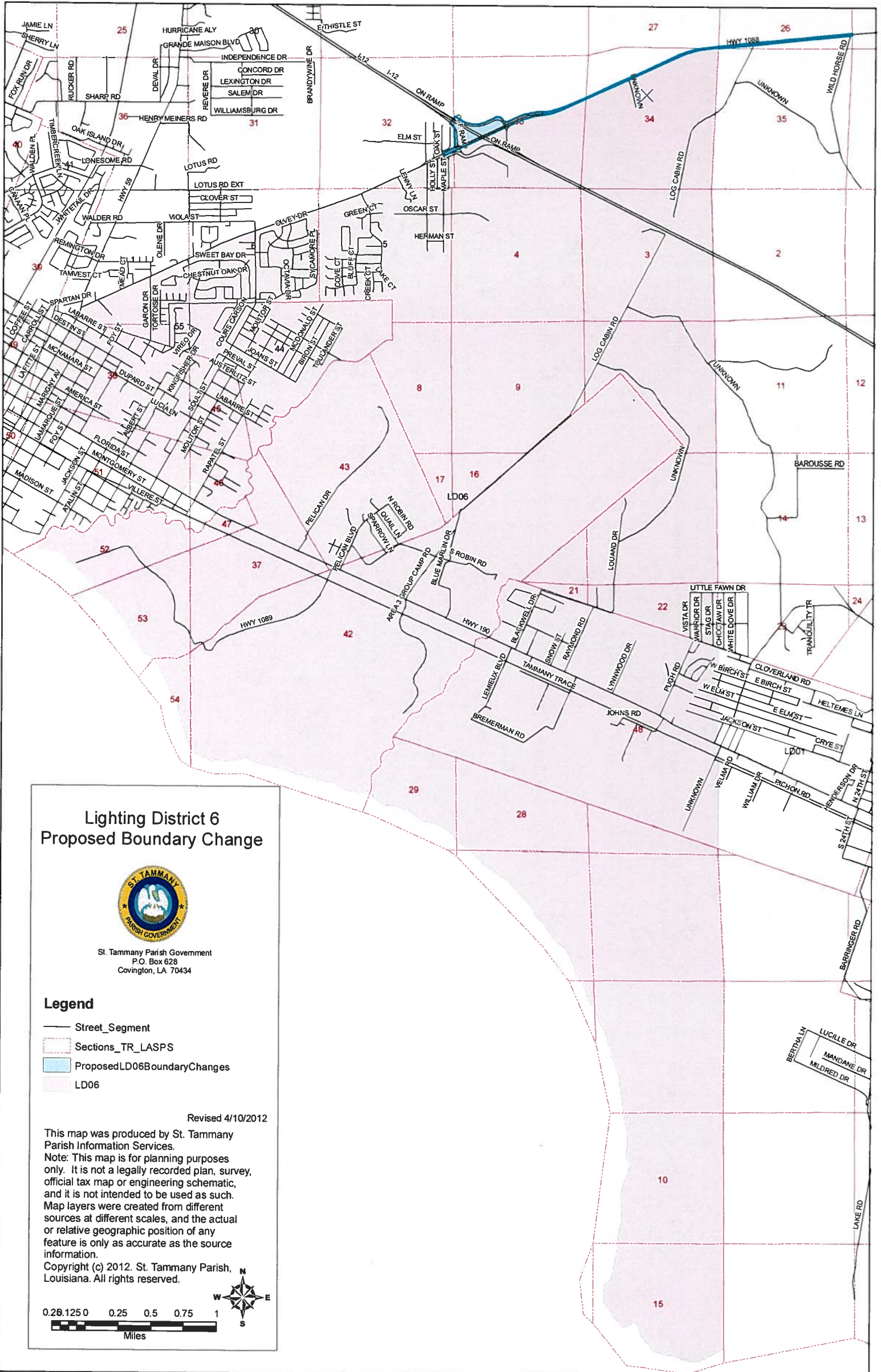
Published Introduction: March 29, 2012

Published Adoption: _____, 2012

Delivered to Parish President: _____, 2012 at _____

Returned to Council Clerk: _____, 2012 at _____

Ord Cal No 4765



Lighting District 6 Proposed Boundary Change



St. Tammany Parish Government
P.O. Box 628
Covington, LA 70434

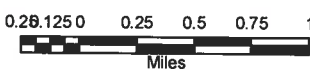
Legend

- Street_Segment
- Sections_TR_LASPS
- Proposed LD06 Boundary Changes
- LD06

Revised 4/10/2012

This map was produced by St. Tammany Parish Information Services.
Note: This map is for planning purposes only. It is not a legally recorded plan, survey, official tax map or engineering schematic, and it is not intended to be used as such. Map layers were created from different sources at different scales, and the actual or relative geographic position of any feature is only as accurate as the source information.

Copyright (c) 2012. St. Tammany Parish, Louisiana. All rights reserved.



St Tammany Parish Web Mapping Application

Find Address Print

GIS Map Disclaimer ESRI ESRI Support Center Help St Tammany Parish Government