

ST. TAMMANY PARISH COUNCIL

ORDINANCE

ORDINANCE CALENDAR NO: 4824

ORDINANCE COUNCIL SERIES NO: _____

COUNCIL SPONSOR: GOULD/BRISTER

PROVIDED BY: PUBLIC WORKS

INTRODUCED BY: MR. STEFANCIK

SECONDED BY: MR. SMITH

ON THE 12 DAY OF JULY , 2012

AN ORDINANCE TO AMEND PARISH CODE, CHAPTER 20, ROADS AND BRIDGES, ARTICLE III, ROAD LIGHTING DISTRICTS, SECTION 20-204.00 DISTRICT NO. 4 TO AMEND THE BOUNDARIES THEREOF.

WHEREAS, St. Tammany Parish Lighting District No. 4 was created and boundaries established pursuant to Ordinance No. 725, said ordinance being codified in the Parish Code of Ordinances as section 20-204.00; and

WHEREAS, there is a need to expand the boundaries of Lighting District No. 4 to include a portion of the US Highway 11 right-of-way near, and including, the entirety of its interchange with I-12 and proceeding a certain distance along US Highway 11 generally northwest of I-12; and

WHEREAS, attached as Exhibit "A" is a map showing the proposed boundaries of Lighting District No. 4 as amended herein.

THE PARISH OF ST. TAMMANY HEREBY ORDAINS: that the boundaries of Lighting District No. 4 are hereby amended to include a portion of the US Highway 11 right-of-way near, and including, the entirety of its interchange with I-12 and proceeding a certain distance along US Highway 11 generally northwest of I-12 as more fully shown on the attached Exhibit.

BE IT FURTHER ORDAINED that section 20-204.00 of the Parish Code of Ordinances be amended as follows:

There is hereby established St. Tammany Parish Lighting District No. 4. The boundaries of said district shall be all of the area included in the Ninth Ward of the Parish as it existed on August 18, 1977, less and except the area included within the boundaries of the municipality of Slidell as of August 18, 1977 and Precinct 9 of the Ninth Ward.

In addition, the boundaries of the District shall include a portion of the US Highway 11 right-of-way near, and including, the entirety of its interchange with I-12 and proceeding a certain distance along US Highway 11 generally northwest of I-12 located in the southwest corner of Section 26, Township 28 South, Range 14 East, as indicated in the attached Exhibit "A".

The District shall be administratively governed and controlled by the Parish President. All funds shall be maintained and controlled, as per law, by the office of the Parish President.

REPEAL: All ordinances or parts of Ordinances in conflict herewith are hereby repealed.

SEVERABILITY: If any provision of this Ordinance shall be held to be invalid, such invalidity shall not affect other provisions herein which can be given effect without the invalid provision and to this end the provisions of this Ordinance are hereby declared to be severable.

EFFECTIVE DATE: This Ordinance shall become effective fifteen (15) days after adoption.

MOVED FOR ADOPTION BY: _____ SECONDED BY: _____

WHEREUPON THIS ORDINANCE WAS SUBMITTED TO A VOTE AND RESULTED IN THE FOLLOWING:

YEAS: _____

NAYS: _____

ABSTAIN: _____

ABSENT: _____

THIS ORDINANCE WAS DECLARED DULY ADOPTED AT A REGULAR MEETING OF THE PARISH COUNCIL ON THE 2 DAY OF AUGUST, 2012; AND BECOMES ORDINANCE COUNCIL SERIES NO _____.

MARTIN W. GOULD, JR., COUNCIL CHAIRMAN

ATTEST:

THERESA L. FORD, COUNCIL CLERK

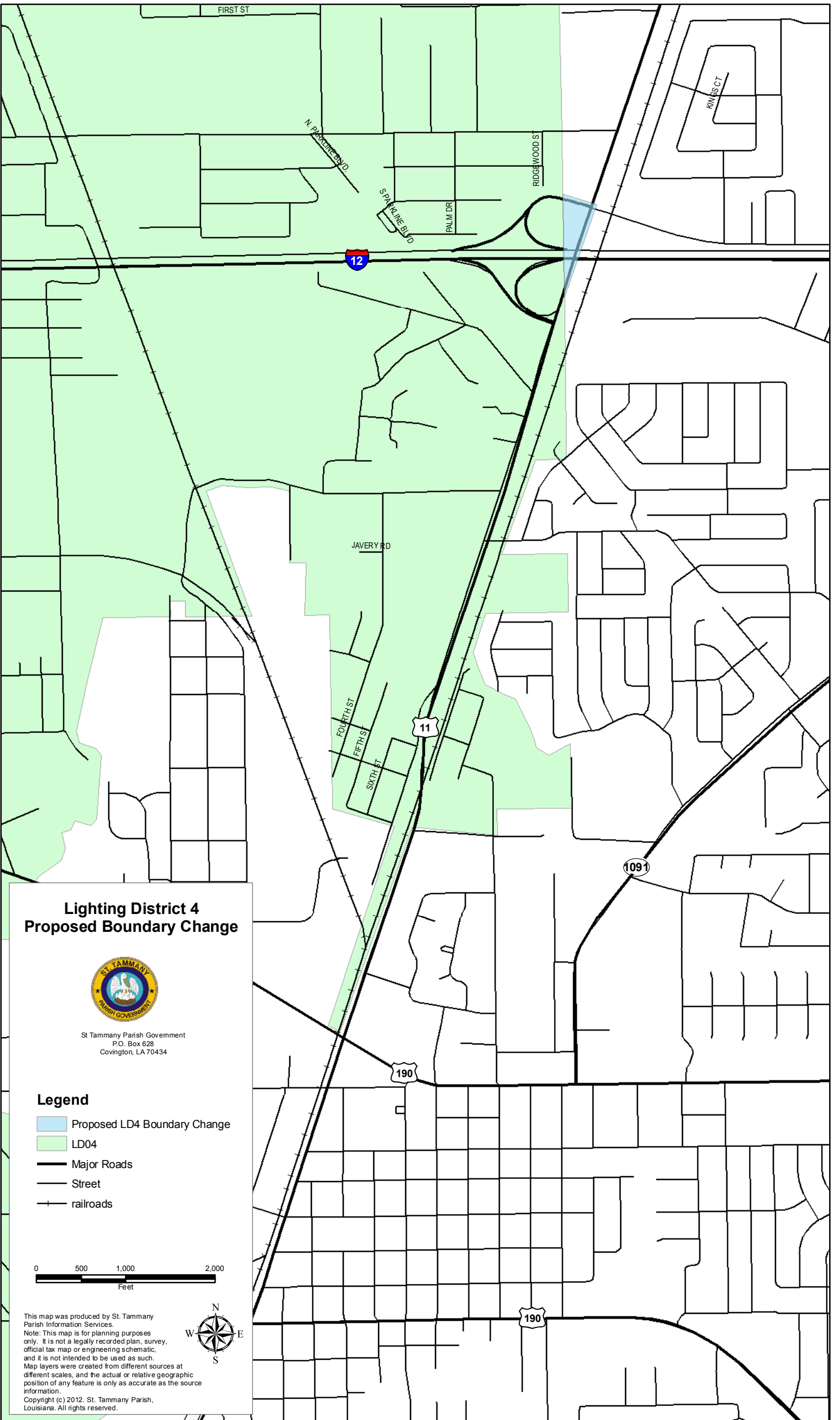
PATRICIA P. BRISTER, PARISH PRESIDENT

Published Introduction: JUNE 28, 2012

Published Adoption: _____, 2012

Delivered to Parish President: _____, 2012 at _____

Returned to Council Clerk: _____, 2012 at _____



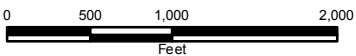
Lighting District 4 Proposed Boundary Change



St Tammany Parish Government
P.O. Box 629
Covington, LA 70434

Legend

- Proposed LD4 Boundary Change
- LD04
- Major Roads
- Street
- railroads



This map was produced by St. Tammany Parish Information Services.
 Note: This map is for planning purposes only. It is not a legally recorded plan, survey, official tax map or engineering schematic, and it is not intended to be used as such.
 Map layers were created from different sources at different scales, and the actual or relative geographic position of any feature is only as accurate as the source information.
 Copyright (c) 2012. St. Tammany Parish, Louisiana. All rights reserved.