

ST. TAMMANY PARISH COUNCIL

ORDINANCE

ORDINANCE CALENDAR NO: 4690

ORDINANCE COUNCIL SERIES NO:

COUNCIL SPONSOR: GOULD/DAVIS

PROVIDED BY: PLANNING

INTRODUCED BY: BURKHALTER

SECONDED BY: STEFANCIK

ON THE 1 DAY OF DECEMBER, 2011

AN ORDINANCE AMENDING THE OFFICIAL ZONING MAP OF ST. TAMMANY PARISH, LA, TO RECLASSIFY A CERTAIN PARCEL OF LAND LOCATED ON THE NORTHEAST CORNER OF LA HIGHWAY 59 & JOHN T. PRATS ROAD, BEING 75200 HIGHWAY 59, COVINGTON, AND WHICH PROPERTY COMPRISES A TOTAL 0.88 ACRE OF LAND MORE OR LESS, FROM ITS PRESENT A1-A (SUBURBAN DISTRICT) TO A PF-1 (PUBLIC FACILITIES DISTRICT). (WARD 10, DISTRICT 6) (ZC11-11-088)

WHEREAS, the Zoning Commission of the Parish of St. Tammany after hearing in accordance with law, Case No. ZC11-11-088, has recommended to the Council of the Parish of St. Tammany, Louisiana, that the zoning classification of the above referenced area be changed from its present A1-A (Suburban District) to a PF-1 (Public Facilities District) see Exhibit "A" for complete boundaries; and

WHEREAS, the St. Tammany Parish Council has held its public hearing in accordance with law; and

WHEREAS, the St. Tammany Parish Council has found it necessary for the purpose of protecting the public health, safety and general welfare, to designate the above described property as PF-1 (Public Facilities District).

THE PARISH OF ST. TAMMANY HEREBY ORDAINS, in regular session convened that:

SECTION I: The zoning classification of the above described property is hereby changed from its present A1-A (Suburban District) to a PF-1 (Public Facilities District).

SECTION II: The official zoning map of the Parish of St. Tammany shall be and is hereby amended to incorporate the zoning reclassification specified in Section I hereof.

REPEAL: All ordinances or parts of Ordinances in conflict herewith are hereby repealed.

SEVERABILITY: If any provision of this Ordinance shall be held to be invalid, such invalidity shall not affect other provisions herein which can be given effect without the invalid provision and to this end the provisions of this Ordinance are hereby declared to be severable.

EFFECTIVE DATE: This Ordinance shall become effective fifteen (15) days after adoption.

[REMAINDER OF PAGE INTENTIONALLY LEFT BLANK]

MOVED FOR ADOPTION BY: SECONDED BY:

WHEREUPON THIS ORDINANCE WAS SUBMITTED TO A VOTE AND RESULTED IN THE FOLLOWING:

YEAS:

NAYS:

ABSTAIN:

ABSENT:

THIS ORDINANCE WAS DECLARED DULY ADOPTED AT A REGULAR MEETING OF THE PARISH COUNCIL ON THE 2 DAY OF FEBRUARY, 2012; AND BECOMES ORDINANCE COUNCIL SERIES NO .

MARTIN W. GOULD, JR., COUNCIL CHAIRMAN

ATTEST:

THERESA L. FORD, COUNCIL CLERK

PATRICIA P. BRISTER, PARISH PRESIDENT

Published Introduction: NOVEMBER 24, 2011

Published Adoption: _____, 2012

Delivered to Parish President: _____, 2012 at _____

Returned to Council Clerk: _____, 2012 at _____

EXHIBIT "A"

ZC11-11-088

A CERTAIN PIECE OR PARCEL of ground, situated in St. Tammany Parish, Louisiana, together with all the buildings and improvements thereon and all the rights, ways, privileges, servitudes and advantages thereto belonging or in anywise appertaining, being situated in Section 18, Township 6 South, Range 12 East, and being designated as follows, to-wit:

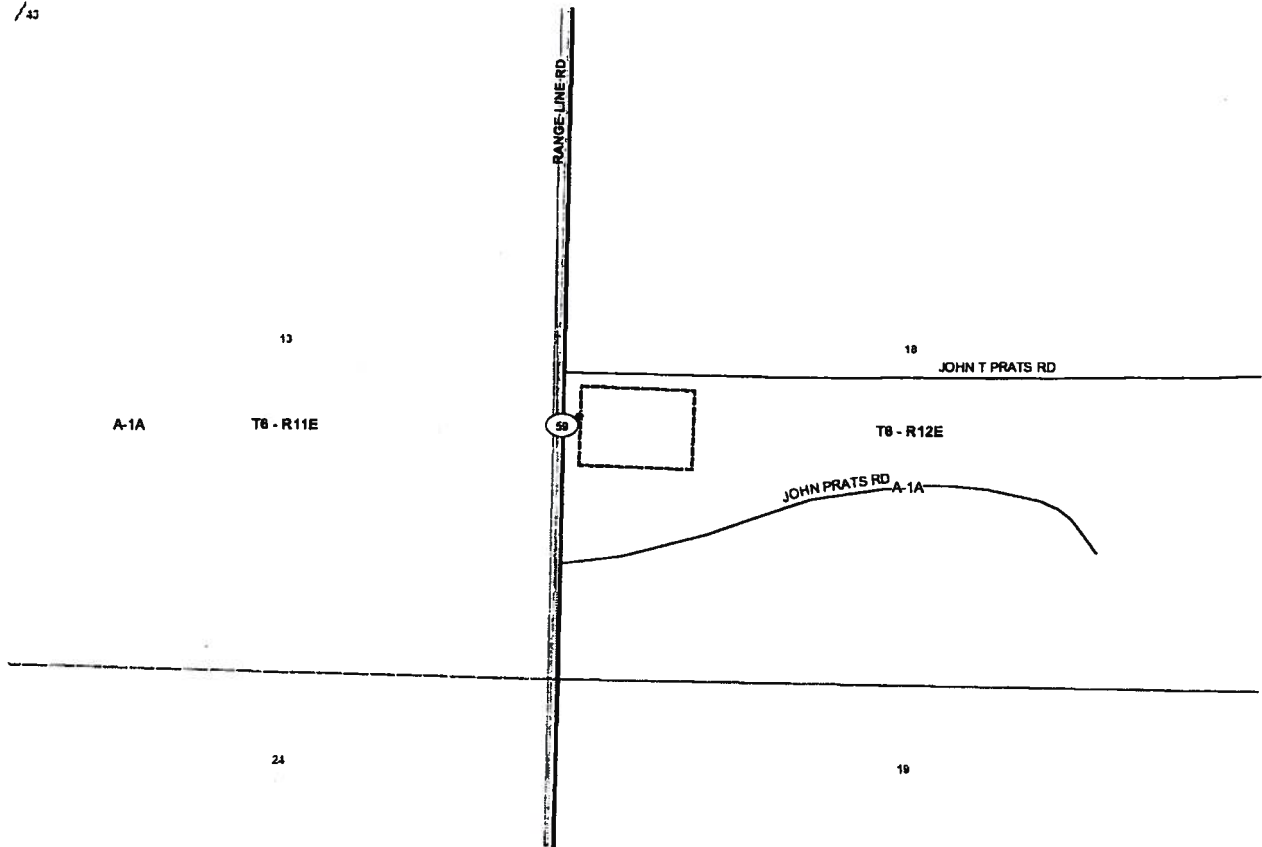
From the Section Corner common to Sections 17, 19 and 20, Township 6 South, Range 12 East, St. Tammany Parish, Louisiana run South 00 degrees 14 minutes 23 seconds West, 75.33 feet; thence North 89 degrees 48 minutes 34 seconds West, 5303.87 feet; thence North 00 degrees 08 minutes 06 seconds West, 563.61 feet to the Point of Beginning.

From the Point of Beginning run along the East Right-of-way of La. Hwy. 59, North 00 degrees 08 minutes 06 seconds West, 163.00 feet to a point; thence South 89 degrees 42 minutes 02 seconds East, 236.00 feet to a point; thence South 00 degrees 08 minutes 06 seconds East, 163.00 feet to a point; thence North 89 degrees 42 minutes 02 seconds West, 236.00 feet back to the Point of beginning.

This tract contains 0.88 Acre.

CASE NO.: ZC11-11-088
PETITIONER: Gregory J. Lemon
OWNER: Fire Protection District No.8 of the Parish of the St. Tammany
REQUESTED CHANGE: From A1-A (Suburban District) to PF-1 (Public Facilities District)
LOCATION: Parcel located on the northeast corner of LA Highway 59 & John T. Prats Road, being 75200 Highway 59, Covington; S18,T6S,R12E; Ward 10, District 6
SIZE: 0.88 acre

/43

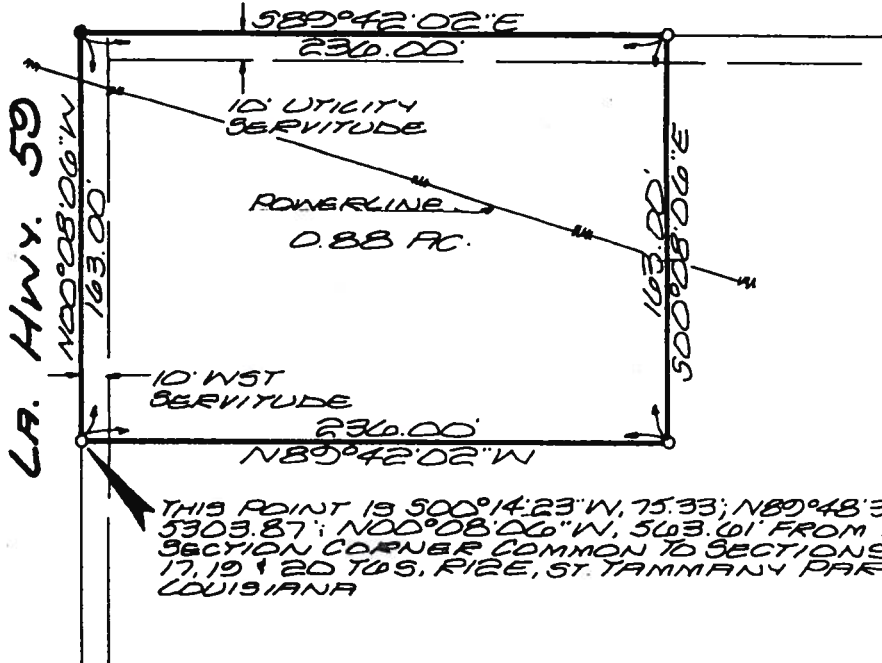


ZC11-11-088

SERVITUDES 3' WIDE HERSON (IF ANY) ARE NOT NECESSARILY TO BE SHOWN. SERVITUDE OF RECORD AS SHOWN ON TITLE OPINION OR TITLE POLICY WILL BE ADDED HEREON UPON REQUEST AS THE UNDERSIGNED HAS PERFORMED NO ABSTRACT OR TITLE SEARCH. THE UNDERSIGNED HAS MADE NO ATTEMPT TO LOCATE ANY BURIED UTILITIES OR ASSOCIATED PEDESTALS.

THIS PROPERTY IS LOCATED IN FLOOD ZONE C, AS PER FEMA FIRM COMM. PANEL NO. 225205 DISDC, MAP DATED 10-17-1989.

PRIVATE GRAVEL ROAD



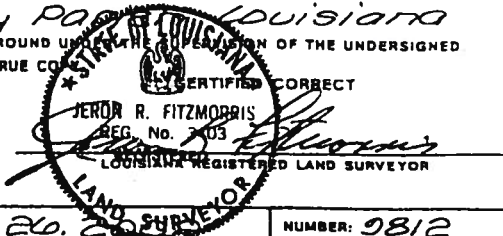
THIS MAP IS IN ACCORDANCE WITH THE MINIMUM STANDARD DETAILED REQUIREMENTS PURSUANT TO THE ACCURACY STANDARDS OF A D SURVEY AND THE APPLICABLE STANDARDS OF PRACTICE CITED IN LAC 40: LXI.

• 1/2" REBAR SET
• 1/2" REBAR FOUND

MAP PREPARED FOR **ST. TAMMANY PARISH FIRE DISTRICT NO. 8**
SHOWN A SURVEY MADE OF PROPERTY LOCATED IN SECTION 18 TOWNSHIP 6 SOUTH, RANGE 12 EAST, ST. TAMMANY PARISH, LOUISIANA

THIS MAP IS IN ACCORDANCE WITH A PHYSICAL SURVEY MADE ON THE GROUND UNDER THE SUPERVISION OF THE UNDERSIGNED SIGNATURE AND STAMPED SEAL MUST BE IN RED OR THIS PLAT IS NOT A TRUE COPY

LAND SURVEYING Inc.
COVINGTON, LOUISIANA



SCALE: 1"=60'

DATE: August 26, 2008

NUMBER: 9812