

ST. TAMMANY PARISH COUNCIL

ORDINANCE

ORDINANCE CALENDAR NO: 6106 ORDINANCE COUNCIL SERIES NO: _____

COUNCIL SPONSOR: MS. BLANCHARD PROVIDED BY: COUNCIL OFFICE

INTRODUCED BY: MS. O'BRIEN SECONDED BY: MR. BELLISARIO

ON THE 6 DAY OF DECEMBER , 2018

ORDINANCE TO AMEND ORDINANCE COUNCIL SERIES 14-3168 ADOPTED AUGUST 14, 2014 AND ORDINANCE COUNCIL SERIES 18-3966 ADOPTED NOVEMBER 1, 2018 TO PROVIDE LEGAL BOUNDARIES FOR PRECINCTS.

WHEREAS, LA R.S. 18:532 et. seq. and 18:1903 provide for the establishment of, and changes to, precincts and their respective legal boundaries; and

WHEREAS, the establishment of changes are necessary to comply with Louisiana Secretary of State regulations, and more particularly described in the amended attached Exhibit "A".

THE PARISH OF ST. TAMMANY HEREBY ORDAINS: that Ordinance Council Series No.14-3168 be amended to reflect the newly amended legal boundaries, due to recently adopted precinct splits, described in the attached, and to be effective upon adoption and implemented beginning with all officially calendared 2019 elections.

BE IT FURTHER ORDAINED: that the Registrar of Voters is hereby directed to process notification of any and all precinct changes affecting voters in the areas affected by these changes.

REPEAL: All ordinances or parts of Ordinances in conflict herewith are hereby repealed.

SEVERABILITY: If any provision of this Ordinance shall be held to be invalid, such invalidity shall not affect other provisions herein which can be given effect without the invalid provision and to this end the provisions of this Ordinance are hereby declared to be severable.

EFFECTIVE DATE: This Ordinance shall become effective fifteen (15) days after adoption.

MOVED FOR ADOPTION BY: _____ SECONDED BY: _____

WHEREUPON THIS ORDINANCE WAS SUBMITTED TO A VOTE AND RESULTED IN THE FOLLOWING:

YEAS: _____

NAYS: _____

ABSTAIN: _____

ABSENT: _____

THIS ORDINANCE WAS DECLARED DULY ADOPTED AT A REGULAR MEETING OF THE PARISH COUNCIL ON THE 3 DAY OF JANUARY , 2019 ; AND BECOMES ORDINANCE COUNCIL SERIES NO _____.

MICHAEL R. LORINO, COUNCIL CHAIRMAN

ATTEST:

THERESA L. FORD, COUNCIL CLERK

PATRICIA P. BRISTER, PARISH PRESIDENT

Published Introduction: NOVEMBER 28 , 2018

Published Adoption: _____, 2018

Delivered to Parish President: _____, 2018 at _____

Returned to Council Clerk: _____, 2018 at _____

St. Tammany Parish 2018 Precinct Changes

11 Precinct Splits

Adopted November 1, 2018

Ordinance Council Series 18-3966

Precinct	Dist.	# of voters	New Precinct name / #	Modified # of voters	Polling Location Changes / Ord. 6059 Introduced Nov. 1, 2018 **to-be-Adopted Dec. 6, 2018
102	04	2162	102	1110	102 Madisonville Junior High School 112 J.B. Lancaster Elem. School
			112	1052	
103	01	1830	103	1342	103 Holy Trinity Lutheran Church 113 Holy Trinity Lutheran Church
			113	488	
104	01	2065	104	854	104 Madisonville Elementary School 114 Madisonville Elementary School
			114	1211	
105	01	1895	105	943	105 Coquille Parks and Recreation 115 Avanti Senior Living Center
			115	952	
106	01	2316	106	1465	106 Coquille Parks & Recreation 116 J. B. Lancaster Elementary School
			116	851	
108	03	1808	108	569	108 Ward 1 Community Bldg. 118 Coquille Parks & Recreation
			118	1239	
411	05	2182	411	1125	411 Lake Harbor Middle School 430 Lake Harbor Middle School
			430	1057	
814	14	2115	814	1287	814 STP Govt. Towers Bldg. 818 STP Govt. Towers Bldg.
			818	828	
909	13	1797	909	1015	909 Salmen High School 922 Salmen High School
			922	782	
MO6	04	1958	M06	1101	M06 Tchefuncte Middle School M11 Tchefuncte Middle School
			M11	857	
S17	12	1901	S17	1145	S17 Salmen High School S20 Salmen High School
			S20	756	

LEGAL BOUNDARY DESCRIPTIONS ATTACHED

Agenda Attachment for December 6, 2018 Council Meeting:

ORDINANCE COUNCIL SERIES 18-3966 AMENDED ORDINANCE COUNCIL SERIES 14-3168, ADOPTED AUGUST 14, 2014 APPROVING PRECINCT SPLITS FOR POLLING LOCATIONS APPROACHING THE LOUISIANA SECRETARY OF STATE'S MAXIMUM VOTER CAPACITY.

ORDINANCE 6059 AMENDING POLLING LOCATION CHANGES REFLECTED ABOVE INTRODUCED NOVEMBER 1, 2018.
PROPOSED FOR ADOPTION DECEMBER 6, 2018.

SEC. 2-018.01 Precinct descriptions

**** References changes adopted November 1, 2018 / Council Series No. 18-3966**

Precinct A01

Commence at the intersection of United Church Road and Lowe Davis Road, also the point of beginning; thence follow Lowe Davis Road northeast and east to its intersection with Allen Rd; thence follow Allen Rd. southwest to its intersection with Hwy. 435; thence follow Hwy. 435 south, southwest to its intersection with Level Street; thence follow Level Street continuing west to its intersection with La. 36; thence follow Hwy. 36 west to its intersection with Dahlia Street; thence follow Dahlia Street north to its intersection with Progress Street; thence follow Progress Street west to its intersection with Rose Street; thence follow Rose Street north to its intersection with Emancipation Street; thence follow Emancipation Street west to its intersection with United Church Road; thence follow United Church Road north to its intersection with Lowe Davis Road, also the point of beginning.

Precinct A02

Commence at the intersection of Hoffman Road and Hwy. 59, also the point of beginning; thence follow Hwy. 59 south to its intersection with Parker Drive; thence follow Parker Drive northwest to its intersection with Soell Dr., thence follow Soell Dr. northeast to its intersection with 11th Ave.; thence follow 11th Ave. northwest to its intersection with North St.; thence follow North St. southwest to its intersection with Lincoln St.; thence follow Lincoln St. west to its intersection with 11th St.; thence follow 11th St. north to Washington Ave.; thence follow Washington Ave. east to Fuschia St.; thence follow Fuschia St. north to Harrison Ave.; thence follow Harrison Ave. east to its intersection with a canal leading into the southern branch of the Abita River; thence follow the canal north to its intersection with the southern branch of the Abita River; thence follow the southern branch of the Abita River east to its intersection with Hwy. 59; thence follow Hwy. 59 north into the Town of Abita Springs to its intersection with Level Street; thence follow Level Street east becoming Burvant Street; thence follow Burvant Street continuing east, then northeast and east to its intersection with Polaris Street; thence follow Polaris Street south and east to its intersection with Landry Lane; thence follow Landry Lane south, east, and south to its intersection with a branch of the Abita River; thence follow the branch of the Abita River west and northwest to its intersection with an unnamed road leading to Hwy. 36; thence follow the unnamed road southwest, southeast, and southwest to its intersection with Hwy. 36 (Hickory Hwy.); thence follow Hwy. 36 (Hickory Hwy.) northwest to its intersection with the southern branch of the Abita River; thence follow the southern branch of the Abita River southwest, west, and northwest to its intersection with the Tammany Trace; thence follow the Tammany Trace southwest to its intersection with Hoffman Road; thence follow Hoffman Road west to its intersection with Hwy. 59, also the point of beginning.

Precinct A03

Commence at the intersection of Allen Rd. and Lowe Davis Road, also the point of beginning; thence follow Lowe Davis Road northeast and east to its intersection with Beef Branch; thence follow Beef Branch southeast, south, southwest, and south to its intersection with an unnamed stream north of Hwy. 435; thence follow the unnamed stream west and southwest to its intersection with McIntyre Road; thence follow McIntyre Road southeast crossing Hwy. 435 and becoming Keen Road; thence follow Keen Road continuing southeast to its intersection with Abita Creek; thence follow Abita Creek southwest to its intersection with the Abita River; thence follow the Abita River northeast and southeast to its intersection with an unnamed road north of Burvant Street; thence follow the unnamed road southwest and south to its intersection with Burvant Street; thence follow Burvant Street southwest and west to its intersection with Hwy. 435; thence follow Hwy. 435 north and northeast to its intersection with Allen Rd.; thence follow Allen Rd. northeast to its intersection with Lowe Davis Rd., also the point of beginning.

Precinct A04

Commence at the intersection of Hwy. 36 and Level St. also the point of beginning; thence follow Level St. west to its intersection with Hwy. 59; thence follow Hwy. 59 south to its intersection with the Abita River; thence follow Abita River west, north west to its intersection with a northwestern branch of said river; thence follow said northwestern branch of the Abita River north, northwest to its intersection with Hwy. 36; thence follow LA Hwy 36 east and southeast to its intersection with Level St. and the point of beginning.

Precinct C01

Commence at the intersection of West 21st Avenue and Menetre Drive in the City of Covington, also the point of beginning; thence follow Menetre Drive southwest, south, and southwest to its intersection with the Tchefonctc River; thence follow the Tchefonctc River west, northwest, west, north, northeast, and north to its intersection with US Hwy. 190; thence follow US Hwy. 190 east to its intersection with West 21st Avenue; thence follow West 21st Avenue southeast to its intersection with Menetre Drive, also the point of beginning.

Precinct C02

Commence at the intersection of Menetre Drive and West 15th Avenue in the City of Covington, also the point of beginning; thence follow West 15th Avenue southeast to its intersection with South Jefferson Avenue; thence follow South Jefferson Avenue southwest to its intersection with West 8th Avenue; thence follow West 8th Avenue northwest to its intersection with an unnamed creek northeast of the Tchefonctc River; thence follow the unnamed creek southeast and southwest to its intersection with the Tchefonctc River; thence follow the Tchefonctc River northwest, north, and northwest to its intersection with Menetre Drive; thence follow Menetre Drive northeast to its intersection with West 15th Avenue, also the point of beginning.

Precinct C03

Commence at the intersection of West 15th Avenue and Menetre Drive in the City of Covington, also the point of beginning; thence follow Menetre Drive north and northeast to its intersection with West 21st Avenue; thence follow West 21st Avenue southeast to its intersection with North Jefferson Avenue; thence follow North Jefferson Avenue southwest to its intersection with West 15th Avenue; thence follow West 15th Avenue northwest to its intersection with Menetre Drive, also the point of beginning.

Precinct C04

Commence at the intersection of South Jefferson Avenue and West 21st Avenue in the City of Covington, also the point of beginning; thence follow West 21st Avenue southeast to its intersection with East Boston Street; thence follow East Boston Street continuing southeast, then northeast to its intersection with South Vermont Street; thence follow South Vermont Street south to its intersection with South Jahncke Avenue; thence follow South Jahncke Avenue southwest and southeast to its intersection with Old Landing Road; thence follow Old Landing Road southwest and south to its intersection with Riverview Drive; thence follow Riverview Drive east to its intersection with the Bogue Falaya River; thence follow the Bogue Falaya River southeast, south, and southwest to its intersection with the Tchefonctc River; thence follow the Tchefonctc River northwest, north, northeast, southeast, northeast, northwest, northeast, and northwest to its intersection with an unnamed creek northeast of the Tchefonctc River; thence follow the unnamed creek northeast and northwest to its intersection with West 8th Avenue; thence follow West 8th Avenue southeast to its intersection with South Jefferson Avenue; thence follow South Jefferson Avenue northeast to its intersection with West 21st Avenue, also the point of beginning.

Precinct C05

Commence at the intersection of East Boston Street and South Vermont Street in the City of Covington, also the point of beginning; thence follow South Vermont Street south to its intersection with South Jahncke Avenue; thence follow South Jahncke Avenue southwest and southeast to its intersection with Old Landing Road; thence follow Old Landing Road southwest and south to its intersection with Riverview Drive; thence follow Riverview Drive east to its intersection with the Bogue Falaya River; thence follow the Bogue Falaya River north, northeast, northwest, north, northeast, north, east, northeast, and north to its intersection with East Boston Street; thence follow East Boston Street southwest to its intersection with South Vermont Street, also the point of beginning.

Precinct C06

Commence at the intersection of West 23rd Avenue and North Tyler Street in the City of Covington, also the point of beginning; thence follow North Tyler Street northeast to its intersection with North Columbia Street; thence follow North Columbia Street northwest to its intersection with Hwy 190; thence follow Hwy. 190 southwest and west to its intersection with West 21st Street; thence follow West 21st Street southeast to its intersection with North Lincoln Street; thence follow North Lincoln Street northeast to its intersection with West 23rd Avenue; thence follow West 23rd Avenue southeast to its intersection with North Tyler Street, also the point of beginning.

Precinct C07

Commence at the intersection of West 23rd Avenue and North Tyler Street in the City of Covington, also the point of beginning; thence follow North Tyler Street northeast to its intersection with North Columbia Street; thence follow North Columbia Street southeast to its intersection with North Jefferson Avenue; thence follow North Jefferson Avenue southwest to its intersection with East 23rd Avenue; thence follow East 23rd Avenue northwest becoming West 23rd Avenue to its intersection with North Tyler Street, also the point of beginning.

Precinct C08

Commence at the intersection of East 33rd Avenue and North Columbia Street in the City of Covington, also the point of beginning; thence follow North Columbia Street southeast to its intersection with North Jefferson Avenue; thence follow North Jefferson Avenue southwest to its intersection with East Boston Avenue; thence follow East Boston Avenue southeast and northeast to its intersection with the Bogue Falaya River; thence follow the Bogue Falaya River northeast, north, northwest, northeast, and north to its intersection with the Little Bogue Falaya River; thence follow the Little Bogue Falaya River east, northeast, east, and northeast to its intersection with Holly Drive; thence follow Holly Drive northwest to its intersection with Dogwood Lane; thence follow Dogwood Lane north, northeast, and north to its intersection with Johnsen Road; thence follow Johnsen Road west to its intersection with Hwy. 437 (Lee Road); thence follow Hwy. 437 (Lee Road) southwest to its intersection with East 33rd Avenue; thence follow East 33rd Avenue southwest to its intersection with North Columbia Street, also the point of beginning.

Precinct C09

Commence at the intersection of East 33rd Avenue and North Columbia Street in the City of Covington, also the point of beginning; thence follow North Columbia Street northwest and north to its intersection with Hwy. 190; thence follow Hwy. 190 northwest becoming Hwy. 25; thence follow Hwy. 25 continuing northwest to its intersection with River Road; thence follow River Road northeast, southeast, east, and southeast to its intersection with Hosmer Mill Road; thence follow Hosmer Mill Road northeast to its intersection with the Bogue Falaya River; thence follow the Bogue Falaya River southeast, south, east, northeast, southeast, east, southeast, east, south, southeast, southwest, and southeast to its intersection with Hwy. 437 (Lee Road); thence follow Hwy. 437 (Lee Road) southwest to its intersection with East 33rd Avenue; thence follow East 33rd Avenue southwest to its intersection with North Columbia Street, also the point of beginning.

Precinct C10

Commence at the intersection of West 21st Avenue and Lincoln St, also the point of beginning; thence follow Lincoln St. north to its intersection with West 23rd Street; thence follow West 23rd Street southeast to its intersection with North Jefferson Avenue; thence follow North Jefferson Avenue southwest to its intersection with West 21st Avenue; thence follow West 21st Avenue northwest to its intersection with Lincoln St, also the point of beginning.

Precinct C11

Commence at the intersection of Hwy. 190 and the Tchefuncte River, also the point of beginning; thence follow the Tchefuncte River north, northeast, northwest to its intersection with Horse Branch; thence follow Horse Branch northeast to its intersection with an eastern branch of Horse Branch; thence follow said eastern branch of Horse Branch northeast to its intersection with Penn Mill Rd.; thence follow Penn Mill Rd. southeast and south to its intersection with an electric power line northwest of Covington High School; thence follow the electric power line northeast to intersection with Hwy 25; thence follow Hwy 25 southeast to its intersection with Hwy 190; thence follow Hwy 190 southwest and west to its intersection with the Tchefuncte River, also the point of beginning.

Precinct F01

Commence at the intersection of Hwy. 40 (Uneedus Road) and Anthony Road, also the point of beginning; thence follow Anthony Road north to its intersection with Lee Settlement Road; thence follow Lee Settlement Road east to its intersection with Hay Hollow Road; thence follow Hay Hollow Road northwest, north, east, north, east, north, and northeast to its intersection with Hwy. 25; thence follow Hwy. 25 southeast to its intersection with Verger Road; thence follow Verger Road east to its intersection with Varnado Road; thence follow Varnado Road north to its intersection with an unnamed road south of Dismal Branch; thence follow the unnamed road east, north, east, and northwest to its intersection with Dismal Branch; thence follow Dismal Branch east to its intersection with the Bogue Falaya River; thence follow the Bogue Falaya River southeast, south, southwest, southeast, south, and southeast to its intersection with Morgan Branch; thence follow Morgan Branch west, southwest, northwest, west, southwest, northwest, and north to its intersection with Hwy. 40 (Uneedus Road); thence follow Hwy. 40 (Uneedus Road) southwest and west to its intersection with Anthony Road, also the point of beginning.

Precinct MD1

Commence at the intersection of the Tchefuncte River and Bayou De Zaire, also the point of beginning; thence follow Bayou De Zaire north, northwest, and west to its intersection with Hwy. 21; thence follow Hwy. 21 north and northeast to its intersection with Dummy Line Road; thence follow Dummy Line Road northwest to its intersection with Black River; thence follow Black River south, southwest, south, southeast, and south to its intersection with the shore line of Lake Pontchartrain; thence follow the shore line of Lake Pontchartrain west, northwest, west, and southwest to its intersection with the St. Tammany Parish/Tangipahoa Parish boundary line; thence follow the St. Tammany Parish/Tangipahoa Parish boundary line into Lake Pontchartrain to its intersection with the St. Tammany Parish/Jefferson Parish boundary line; thence follow the St. Tammany Parish/Jefferson Parish boundary line southeast to its intersection with a straight line extension leading into the Tchefuncte River; thence follow the straight line extension north to its intersection with the Tchefuncte River; thence follow the Tchefuncte River northeast, north, northwest, and north to its intersection with Bayou De Zaire, also the point of beginning.

Precinct M01

Commence at the intersection of the Lake Pontchartrain Causeway and the St. Tammany Parish/Jefferson Parish boundary line in Lake Pontchartrain, also the point of beginning; thence follow the St. Tammany Parish/Jefferson Parish boundary line northwest to its intersection with a straight line extension leading to the east bank of the Tchefuncte River; thence follow the straight line extension north to its intersection with the east bank of the Tchefuncte River; thence follow the east bank of the Tchefuncte River northeast and east to its intersection with an unnamed canal which runs parallel with the shoreline of Lake Pontchartrain; thence follow the canal southeast, east, and southeast to its intersection with Bayou Chinchuba; thence follow Bayou Chinchuba northeast to its intersection with an unnamed road northwest of Lewisburg; thence follow the unnamed road northwest and north to its intersection with an electric power line; thence follow the electric power line southeast to its intersection with Skipper Drive; thence follow Skipper Drive northeast to its intersection with Live Oak Blvd.; thence follow Live Oak Blvd. northwest to its intersection with Chestnut Street; thence follow Chestnut Street northeast to its intersection with Weldon Park Drive; thence follow Weldon Park Drive southeast to its intersection with Hickory Street; thence follow Hickory Street northeast to its intersection with West Causeway Approach Hwy.; thence follow West Causeway Approach Hwy. southeast to its intersection with Bayou Chinchuba; thence follow Bayou Chinchuba northeast to its intersection with North Causeway Blvd.; thence follow North Causeway Blvd. southwest becoming the Lake Pontchartrain Causeway; thence follow the Lake Pontchartrain Causeway continuing southwest to its intersection with the St. Tammany Parish/Jefferson Parish boundary line, also the point of beginning.

Precinct M02

Commence at the intersection of North Causeway Blvd. and East Florida Street in the City of Mandeville, also the point of beginning; thence follow East Florida Street southeast to its intersection with Wilkinson Street; thence follow Wilkinson Street southwest to its intersection with Monroe Street; thence follow Monroe Street northwest to its intersection with North Causeway Blvd.; thence follow North Causeway Blvd. northeast to its intersection with East Florida Street, also the point of beginning.

Precinct M03

Commence at the intersection of North Causeway Blvd. and Monroe Street in the City of Mandeville, also the point of beginning; thence follow Monroe Street southeast to its intersection with Wilkinson Street; thence follow Wilkinson Street southwest to its intersection with Lakeshore Drive; thence follow Lakeshore Drive northwest to its intersection where Lakeshore Drive meets Lake Pontchartrain east of Sunset Point Park; thence follow a straight line extension into Lake Pontchartrain to its intersection with the St. Tammany Parish/Orleans Parish boundary line; thence follow the St. Tammany Parish/Orleans Parish boundary line northwest to its intersection with the St. Tammany Parish/Jefferson Parish boundary line; thence follow the St. Tammany Parish/Jefferson Parish boundary line continuing northwest to its intersection with the Lake Pontchartrain Causeway; thence follow the Lake Pontchartrain Causeway northeast becoming North Causeway Blvd. to its intersection with Monroe Street, also the point of beginning.

Precinct M04

Commence at the intersection of East Florida Street and Gerard Street in the City of Mandeville, also the point of beginning; thence follow Gerard Street southwest to its intersection with Lakeshore Drive; thence follow Lakeshore Drive southeast to its intersection with Little Bayou Castine; thence follow Little Bayou Castine south to its intersection with the shoreline of Lake Pontchartrain; thence follow the shoreline of Lake Pontchartrain northwest to its intersection where the shoreline meets Lakeshore Drive east of Sunset Point Park; thence follow Lakeshore Drive southeast to its intersection with Wilkinson Street; thence follow Wilkinson Street northeast to its intersection with East Florida Street; thence follow East Florida Street southeast to its intersection with Gerard Street, also the point of beginning.

Precinct M05

Commence at the intersection of Gerard Street and East Florida Street in the City of Mandeville, also the point of beginning; thence follow East Florida Street southeast to its intersection with Atalin Street; thence follow Atalin Street southwest to its intersection with a canal leading into Bayou Castine; thence follow the canal east and south to its intersection with Bayou Castine; thence follow Bayou Castine southwest to its intersection where Bayou Castine flows into Lake Pontchartrain; thence follow a straight line extension into Lake Pontchartrain south to its intersection with the St. Tammany Parish/Orleans Parish boundary line; thence follow the St. Tammany Parish/Orleans Parish boundary line northwest to its intersection with a straight line extension leading to a point east of Sunset Point Park; thence follow the straight line extension north to its intersection with the shoreline of Lake Pontchartrain; thence follow the shoreline of Lake Pontchartrain southeast to its intersection with Little Bayou Castine; thence follow Little Bayou Castine north to its intersection with Lakeshore Drive; thence follow Lakeshore Drive northwest to its intersection with Gerard Street; thence follow Gerard Street northeast to its intersection with East Florida Street, also the point of beginning.

****Precinct M06 (split into M06 & M11)**

Commence at the intersection of West Causeway Approach Hwy. and Hwy. 22, also the point of beginning; thence follow Hwy. 22 northwest to its intersection with Heavens Drive; thence follow Heavens Drive south, southeast, and south to its intersection with an electric power line south of Beau Rivage subdivision; thence follow the electric power line southeast to its intersection with Garden Avenue; thence follow Garden Avenue northeast to its intersection with West Causeway Approach Hwy.; thence follow West Causeway Approach Hwy. northwest to its intersection with Hwy. 22, also the point of beginning.

Precinct M07

Commence at the intersection of North Causeway Blvd. and Hwy. 190, also the point of beginning; thence follow Hwy. 190 north to its intersection with Ashbury Dr. (aka LA Hwy 3228); thence follow Ashbury Dr. southeast to Emerald Dr. also US Hwy 190; thence follow US Hwy 190 southeast its intersection with East Causeway Blvd.; thence follow East Causeway Blvd. northwest to its intersection with Florida St.; thence follow Florida St. northwest to North Causeway Blvd.; thence follow North Causeway Blvd. North to US Hwy. 190, also the point of beginning.

Precinct M08

Commence at the intersection of Hwy. 22 and West Causeway Approach Hwy., also the point of beginning; thence follow West Causeway Approach Hwy. southeast to its intersection with Bayou Chinchuba; thence follow Bayou Chinchuba northeast to its intersection with North Causeway Blvd.; thence follow North Causeway Blvd. north and northeast to its intersection with Hwy. 22; thence follow Hwy. 22 northwest to its intersection with West Causeway Approach Hwy., also the point of beginning.

Precinct M09

Commence at the intersection of Florida St. (a/k/a Hwy. 190) and Atalin St., also the point of beginning, thence follow Atalin St. south to its intersection with Bayou Castine; thence follow the meanderings of Bayou Castine northeast to its intersection with Florida St. (a/k/a Hwy. 190); thence follow Florida St. (a/k/a Hwy. 190) northwest to its intersection with Atalin St., also the point of beginning.

Precinct M10

Commence at the intersection of East Florida Street and Soult Street, also the point of beginning; thence follow Soult Street northeast to its intersection with a canal between Quail Creek South and New Canaan Hills subdivisions; thence follow the canal east, southeast, east, southeast, east, south, and east to its intersection with Log Cabin Road; thence follow Log Cabin Road northeast to its intersection with Cane Bayou; thence follow Cane Bayou south, southwest, south, southwest, and south to its intersection where Cane Bayou flows into Lake Pontchartrain; thence follow a straight line extension south into Lake Pontchartrain to its intersection with the St. Tammany Parish/Orleans Parish boundary line; thence follow the St. Tammany Parish/Orleans Parish boundary line northwest to its intersection with a straight line extension leading to Bayou Castine; thence follow the straight line extension north to its intersection with Bayou Castine; thence follow Bayou Castine northeast to its intersection with Florida St. (a/k/a Hwy. 190); thence follow Florida St. (a/k/a Hwy. 190) northwest to its intersection with Soult St., also the point of beginning.

****Precinct M11 (newly created / split from MO6)**

Commence at the intersection of West Causeway Approach Hwy. and Garden Avenue, also the point of beginning; thence follow Garden Avenue southwest to its intersection with an electric power line; thence follow the electric power line south and southeast to its intersection with Skipper Drive; thence follow Skipper Drive northeast to its intersection with Live Oak Blvd.; thence follow Live Oak Blvd. northwest to its intersection with Chestnut Street; thence follow Chestnut Street northeast to its intersection with Weldon Park Drive; thence follow Weldon Park Drive southeast to its intersection with Hickory Street; thence follow Hickory Street northeast to its intersection with West Causeway Approach Hwy.; thence follow West Causeway Approach Hwy. northwest to its intersection with Garden Avenue, also the point of beginning.

Precinct P01

Commence at the intersection of Hickory Street (Hwy. 41 Spur) and Hwy. 41, also the point of beginning; thence follow Hwy. 41 southwest, south, and southeast becoming Watts Road; thence follow Watts Road continuing southeast, then east to its intersection with Hwy. 1090 (Military Road); thence follow Hwy. 1090 (Military Road) south and southeast to its intersection with the I-59 Service Road; thence follow the I-59 Service Road northeast, northwest, north, and northeast to its intersection with Porter's River Road; thence follow Porter's River Road east, northeast, and north to its intersection with a boat launch leading into Porter's River; thence follow Porter's River northeast, northwest, and northeast to its intersection with the West Pearl River; thence follow the West Pearl River northwest to its intersection with I-59; thence follow I-59 southwest to its intersection with Gum Creek; thence follow Gum Creek northwest, west, northwest, west, south, southeast, and southwest to its intersection with Hickory Street (Hwy. 41 Spur); thence follow Hickory Street (Hwy. 41 Spur) northwest to its intersection with Hwy. 41, also the point of beginning.

Precinct S01

Commence at the intersection of Hwy. 11 (Front Street) and I-12, also the point of beginning; thence follow I-12 east and southeast to its intersection with Hwy. 1091 (Robert Blvd); thence follow Hwy. 1091 (Robert Blvd.) southwest to its intersection with Pinewood Drive; thence follow Pinewood Drive west to its intersection with Driftwood Circle; thence follow Driftwood Circle south, west, and northwest to its intersection with Ninth Street; thence follow Ninth Street southwest to its intersection with North Blvd.; thence follow North Blvd. west to its intersection with Hwy. 11 (Front Street); thence follow Hwy. 11 (Front Street) northeast to its intersection with I-12, also the point of beginning.

Precinct S02

Commence at the intersection of Pinewood Drive and Hwy. 1091 (Robert Blvd.), also the point of beginning; thence follow Hwy. 1091 (Robert Blvd.) southwest to its intersection with North Blvd.; thence follow North Blvd. northwest, west, northwest, and west to its intersection with Ninth street; thence follow Ninth Street northeast to its intersection with Driftwood Circle; thence follow Driftwood Circle southeast, east, and north to its intersection with Pinewood Drive; thence follow Pinewood Drive east to its intersection with Hwy. 1091 (Robert Blvd.), also the point of beginning.

Precinct S03

Commence at the intersection of North Blvd. and Hwy. 1091 (Robert Blvd.), also the point of beginning; thence follow Hwy. 1091 (Robert Blvd.) southwest to its intersection with the W-14 Canal; thence follow the W-14 Canal northwest, west, northwest, and northeast to its intersection with North Blvd.; thence follow North Blvd. east, southeast, east, and southeast to its intersection with Hwy. 1091 (Robert Blvd.), also the point of beginning.

Precinct S04

Commence at the intersection of Hwy. 1091 (Robert Blvd.) and Timberlane Drive, also the point of beginning; thence follow Timberlane Drive south to its intersection with Cardinal Drive; thence follow Cardinal Drive west, south, and west to its intersection with Audubon Drive; thence follow Audubon Drive south to its intersection with the W-15, L-1 Canal; thence follow the W-15, L-1 Canal west to its intersection with the W-14 Canal; thence follow the W-14 Canal north to its intersection with Hwy. 1091 (Robert Blvd.); thence follow Hwy. 1091 (Robert Blvd.) northeast to its intersection with Timberlane Drive, also the point of beginning.

Precinct S05

Commence at the intersection of Timberlane Drive and Hwy. 1091 (Robert Blvd.), also the point of beginning; thence follow Hwy. 1091 (Robert Blvd.) northeast to its intersection with I-12; thence follow I-12 southeast to its intersection with I-10; thence follow I-10 southwest to its intersection with the W-15, L-1 Canal; thence follow the W-15, L-1 Canal west to its intersection with Audubon Drive; thence follow Audubon Drive north to its intersection with Cardinal Drive; thence follow Cardinal Drive east, north, and east to its intersection with Timberlane Drive; thence follow Timberlane Drive north to its intersection with Hwy. 1091 (Robert Blvd.), also the point of beginning.

Precinct S06

Commence at the intersection of West Gause Blvd. (Hwy 190) and Hwy. 11 (Front Street), also the point of beginning; thence follow Hwy. 11 (Front Street) southwest to its intersection with Bayou Pattasat; thence follow Bayou Pattasat northwest to its intersection with Bayou Bonfouca; thence follow Bayou Bonfouca southwest to its intersection with Bayou Liberty Road; thence follow Bayou Liberty Road northwest to its intersection with East Street; thence follow East Street north to its intersection with Sloat Road; thence follow Sloat Road east to its intersection with Vincent Road; thence follow Vincent Road northeast and north to its intersection with Salmen Street; thence follow Salmen Street east to its intersection with Sullivan Road; thence follow Sullivan Road northwest to its intersection with Forestwood Drive; thence follow Forestwood Drive north to its intersection with West Hall Avenue; thence follow West Hall Avenue east to its intersection with Kaycee Drive; thence follow Kaycee Drive north to its intersection with Twin Oaks Drive (St. Christopher Drive); thence follow Twin Oaks Drive (St. Christopher Drive) east to its intersection with St. Scholastica Drive; thence follow St. Scholastica Drive south, southeast, and south to its intersection with West Hall Avenue; thence follow West Hall Avenue east to its intersection with Bayou Vincent; thence follow Bayou Vincent northeast and north to its intersection with West Gause Blvd. (Hwy. 190); thence follow West Gause Blvd. (Hwy. 190) southeast to its intersection with Hwy. 11 (Front Street), also the point of beginning.

Precinct S07

Commence at the intersection of West Gause Blvd. (Hwy 190) and Carroll Road, also the point of beginning; thence follow Carroll Road south and southwest to its intersection with Bayou Liberty Road; thence follow Bayou Liberty Road east and southeast to its intersection with East Street; thence follow East Street north to its intersection with Sloat Road; thence follow Sloat Road east to its intersection with Vincent Road; thence follow Vincent Road northeast to its intersection with Salmen Street; thence follow Salmen Street east to its intersection with Sullivan Road; thence follow Sullivan Road northwest to its intersection with Forestwood Drive; thence follow Forestwood Drive north to its intersection with West Hall Avenue; thence follow West Hall Avenue east to its intersection with Kaycee Drive; thence follow Kaycee Drive north to its intersection with Twin Oaks Drive (St. Christopher Drive); thence follow Twin Oaks Drive (St. Christopher Drive) east to its intersection with St. Scholastica Drive; thence follow St. Scholastica Drive south, southeast, and south to its intersection with West Hall Avenue; thence follow West Hall Avenue east to its intersection with Bayou Vincent; thence follow Bayou Vincent northeast and north to its intersection with West Gause Blvd. (Hwy. 190); thence follow West Gause Blvd. (Hwy. 190) north to its intersection with Carroll Road, also the point of beginning.

Precinct S08

Commence at the intersection of I-10 and Gause Blvd., also the point of beginning; thence follow Gause Blvd. west to its intersection with Rue Rochelle; thence follow Rue Rochelle north to its intersection with Independence Drive; thence follow Independence Drive west to its intersection with the W-14 Canal; thence follow the W-14 Canal north to its intersection with the W-15, L-1 Canal; thence follow the W-15, L-1 Canal east to its intersection with I-10; thence follow I-10 southwest to its intersection with Gause Blvd., also the point of beginning.

Precinct S09

Commence at the intersection of Gause Blvd. and Rue Rochelle, also the point of beginning; thence follow Rue Rochelle north to its intersection with Independence Drive; thence follow Independence Drive west to its intersection with the W-14 Canal; thence follow the W-14 Canal south to its intersection with Gause Blvd.; thence follow Gause Blvd. east to its intersection with Rue Rochelle, also the point of beginning.

Precinct S10

Commence at the intersection of Hwy. 11 and Indiana Street, also the point of beginning; ; thence follow Indiana Street east to its intersection with Ninth Street; thence follow Ninth Street south to its intersection with Stadium Drive; thence follow Stadium Drive east and south to its intersection with Tower Drive; thence follow Tower Drive east to its intersection with Robert Blvd.; thence follow Robert Blvd. south to its intersection with Gause Blvd.; thence follow Gause Blvd. east to its intersection with 14th Street; thence follow 14th Street south to its intersection with Florida Street; thence follow Florida Street east to its intersection with the W-14 Canal; thence follow the W-14 Canal south and southwest to its intersection with Fremaux Avenue; thence follow Fremaux Avenue west to its intersection with 9th Street; thence follow 9th Street south to its intersection with the extension of Warren Street; thence follow the extension of and Warren Street west to its intersection with 5th Street; thence follow 5th Street south to its intersection with Erlanger Street; thence follow Erlanger Street west to its intersection with 2nd Street; thence follow 2nd Street south to its intersection with Robert Street; thence follow Robert Street west to its intersection with 1st Street; thence follow 1st Street south to its intersection with Brakefield Street; thence follow Brakefield Street west to its intersection with Carey Street; thence follow Carey Street south to its intersection with a southern branch of Bayou Bonfouca; thence follow the branch of Bayou Bonfouca southeast to its intersection with Cleveland Street; thence follow Cleveland Street northwest to its intersection with Mary Street; thence follow Mary Street southwest to its intersection with Codifer Street; thence follow Codifer Street southeast to its intersection with Sargent Alfred Street; thence follow Sargent Alfred Street southwest to its intersection with Hwy. 433; thence follow Hwy. 433 northwest and west to its intersection with Pontchartrain Drive; thence follow Pontchartrain Drive northwest to its intersection with Hwy. 11; thence follow Hwy. 11 northeast to its intersection with Indiana Street, also the point of beginning.

Precinct S11

Commence at the intersection of Lakewood Avenue and Old Fremaux Avenue, also the point of beginning; thence follow Old Fremaux Avenue east to its intersection with Marsha Drive; thence follow Marsha Drive south to its intersection with Alice Avenue; thence follow Alice Avenue east to its intersection with McKinney Road; thence follow McKinney Road south to its intersection with Hwy. 190 Business (Fremaux Avenue or Shortcut Road); thence follow Hwy. 190 Business (Fremaux Avenue or Shortcut Road) northwest and west to its intersection with the W-14 Canal; thence follow the W-14 Canal northeast and north to its intersection with Florida Avenue; thence follow Florida Avenue east to its intersection with Lakewood Drive; thence follow Lakewood Drive south, southwest, and south to its intersection with Fremaux Avenue, also the point of beginning.

Precinct S13

Commence at the intersection of Hwy. 11 (Front Street) and Pontchartrain Drive, also the point of beginning; thence follow Pontchartrain Drive a short distance northwest to its intersection with the west tracks of the Illinois Central Gulf Railroad; thence follow the west tracks of the Illinois Central Gulf Railroad southwest to its intersection with Bayou Lasseigne; thence follow Bayou Lasseigne northwest to its intersection with Bayou Bonfouca; thence follow Bayou Bonfouca northeast, southeast, and northeast to its intersection with Bayou Pattasat; thence follow Bayou Pattasat southeast to its intersection with Hwy. 11 (Front Street); thence follow Hwy. 11 (Front Street) southwest to its intersection with Pontchartrain Drive, also the point of beginning.

Precinct S15

Commence at the intersection of Pontchartrain Drive and the west tracks of the Illinois Central Railroad, also the point of beginning; thence follow the west tracks of the Illinois Central Railroad southwest and southeast to its intersection with the Illinois Central Railroad; thence follow the Illinois Central Railroad southwest to its intersection with Schneider Canal; thence follow Schneider Canal southeast to its intersection with Pontchartrain Drive; thence follow Pontchartrain Drive northeast and northwest to its intersection with the west tracks of the Illinois Central Railroad, also the point of beginning.

Precinct S16

Commence at the intersection of Pontchartrain Drive and Old Spanish Trail, also the point of beginning; thence follow Old Spanish Trail southeast to its intersection with Lopez Street; thence follow Lopez Street west to its intersection with Hickory Drive; thence follow Hickory Drive northwest and west to its intersection with Broad Street; thence follow Broad Street northwest to its intersection with Pontchartrain Drive; thence follow Pontchartrain Drive northeast and northwest to its intersection with Old Spanish Trail, also the point of beginning.

****Precinct S17 (split into S17 & S20)**

Commence at the intersection of Pontchartrain Drive and Broad Street, also the point of beginning; thence follow Broad Street southeast to Hickory Drive; thence follow Hickory Drive southeast to its intersection with the W-20 Canal; thence follow W-20 Canal south and southeast to its intersection with a Lauren Plaza Ditch, thence follow Lauren Plaza Ditch west and southwest to its intersection with Spartan Drive; thence follow Spartan Drive northwest to its intersection with Pontchartrain Drive; thence follow Pontchartrain Drive northeast to its intersection with Broad Street, also the point of beginning.

Precinct S18

Commence at the intersection of Bayou Bonfouca and Bayou Lasseigne, also the point of beginning; thence follow Bayou Lasseigne southeast to its intersection with the west tracks of the Illinois Central Gulf Railroad; thence follow the west tracks of the Illinois Central Gulf Railroad southwest and southeast to its intersection with the Illinois Central Railroad; thence follow the Illinois Central Railroad continuing southwest to its intersection with Schneider Canal; thence follow Schneider Canal southeast to its intersection with Pontchartrain Drive (Hwy. 11); thence follow Pontchartrain Drive (Hwy. 11) southwest to its intersection with the St. Tammany Parish/Orleans Parish boundary line in Lake Pontchartrain; thence follow the St. Tammany Parish/Orleans Parish boundary line west and northwest to its intersection with a straight line extension from the point where Bayou Bonfouca flows into Lake Pontchartrain; thence follow the straight line extension north to its intersection with Bayou Bonfouca; thence follow Bayou Bonfouca northeast to its intersection with Bayou Liberty; thence follow Bayou Liberty north, northwest, north, northeast, east, and northeast to its intersection with Thompson Road; thence follow Thompson Road southeast to its intersection with Bayou Liberty Road; thence follow Bayou Liberty Road east to its intersection with Nunez Road; thence follow Nunez Road south to its intersection with Laurent Road; thence follow Laurent Road northeast to its intersection with Baldwin Drive; thence follow Baldwin Drive southeast to its intersection with Ridgewood Drive; thence follow Ridgewood Drive southwest to its intersection with Dunbar Drive; thence follow Dunbar Drive southeast to its intersection with a gravel driveway into the Baldwin property; thence follow the gravel driveway continuing southeast, then east, southeast, and south to its intersection with a cleared path leading to a boat launch on the property leading into Bayou Bonfouca; thence follow the cleared path southeast and southwest to its intersection with a boat launch leading into Bayou Bonfouca; thence follow the boat launch south to its intersection with Bayou Bonfouca; thence follow Bayou Bonfouca generally east to its intersection with Bayou Lasseigne, also the point of beginning.

Precinct S19

Commence at the intersection of West Gause Blvd. and North Harrison Road, also the point of beginning; thence follow North Harrison Road northwest to its intersection with LaGrange Road; thence follow LaGrange Road northeast to its intersection with a drainage canal which flows into Bayou Vincent; thence follow the drainage canal southeast to its intersection with Bayou Vincent; thence follow Bayou Vincent northeast, northwest, north, and northeast to its intersection with the abandoned Illinois Central Railroad; thence follow the abandoned Illinois Central Railroad northwest to its intersection with Browns Village Road; thence follow Browns Village Road east to its intersection with Hwy. 11 (Front Street); thence follow Hwy. 11 (Front Street) southwest to its intersection with North Blvd.; thence follow North Blvd. east to its intersection with the W-14 Canal; thence follow the W-14 Canal southwest, south, southeast, east, northeast, southeast, south, southeast, and southwest to its intersection with Gause Blvd.; thence follow Gause Blvd. west to its intersection with Robert Blvd.; thence follow Robert Blvd. north to its intersection with Tower Drive; thence follow Tower Drive west to its intersection with Stadium Drive; thence follow Stadium Drive north and west to its intersection with Ninth Street; thence follow Ninth Street north to its intersection with Indiana Street; thence follow Indiana Street west to its intersection with Hwy. 11 (Front Street); thence follow Hwy. 11 (Front Street) southwest to its intersection with West Gause Blvd.; thence follow W. Gause Blvd. northwest to its intersection with North Harrison Road, also the point of beginning.

****Precinct S20 (newly created / split from S17)**

Commence at the intersection of Pontchartrain Drive and Schneider Canal, also the point of beginning; thence follow Schneider Canal east, south, east, and southeast to its intersection with West Howze Beach Road; thence follow West Howze Beach Road northeast to its intersection with Old Spanish Trail; thence follow Old Spanish Trail northwest to its intersection with Lopez Street; thence follow Lopez Street west to its intersection with Hickory Drive; thence follow Hickory Drive northwest to its intersection with a W-20 Canal; thence follow W-20 Canal south and southeast to its intersection with a Lauren Plaza Ditch, thence follow Lauren Plaza Ditch west and southwest to its intersection with Spartan Drive; thence follow Spartan Drive northwest to its intersection with Pontchartrain Drive; thence follow Pontchartrain Drive southwest to its intersection with the Schneider Canal, also the point of beginning.

Precinct S21

Commence at the intersection of Hwy. 190 East and Brookter Road, also the point of beginning; thence follow Brookter Road south and southeast to its intersection with Kingspoint Road; thence follow Kingspoint Road southwest to its intersection with Windrift Drive; thence follow Windrift Drive northwest to its intersection with the W-14 Canal; thence follow the W-14 Canal continuing northwest, then southwest, west, northwest, north, northwest, north, and northeast to its intersection with Fremaux Avenue; thence follow Fremaux Avenue east becoming Hwy. 190 East; thence follow Hwy. 190 East continuing east, then southeast to its intersection with Brookter Road, also the point of beginning.

Precinct S22

Commence at the intersection of Eden Isles Blvd. and Oak Harbor Blvd., also the point of beginning; thence follow Oak Harbor Blvd. east, northeast, west, southwest, north, and west to its intersection with Hwy. 11; thence follow Hwy. 11 northeast to its intersection with Schneider Canal; thence follow Schneider Canal east, southeast, east, and southeast to its intersection with West Howze Beach Road; thence follow West Howze Beach Road northeast to its intersection with Hwy. 433 (Old Spanish Trail); thence follow Hwy. 433 (Old Spanish Trail) northwest to its intersection with Terrance Avenue; thence follow Terrance Avenue northeast and north to its intersection with Ash Street; thence follow Ash Street west to its intersection with 10th Avenue; thence follow 10th Avenue north to its intersection with Daney Street; thence follow Daney Street east to its intersection with the W-14 Canal; thence follow the meanderings of the W-14 Canal southeast, east, and northeast to its intersection with I-10; thence follow I-10 southwest to its intersection with an unnamed stream; thence follow the unnamed stream northwest to its intersection with the I-10 Service Road; thence follow the I-10 Service Road northeast to its intersection with Eden Isles Blvd.; thence follow Eden Isles Blvd. northwest to its intersection with Oak Harbor Blvd., also the point of beginning.

Precinct S23

Commence at the intersection of I-10 and Gause Blvd., also the point of beginning; thence follow Gause Blvd. west to its intersection with 14th Street; thence follow 14th Street south to its intersection with Florida Avenue, thence follow Florida Avenue east to its intersection with Lakewood Drive; thence follow Lakewood Drive south and west to its intersection with Old Fremaux Avenue; thence follow Old Fremaux Avenue east to its intersection with Marsha Drive, thence follow Marsha Drive south to its intersection with Alice Avenue, thence follow Alice Avenue east to its intersection with McKinney Road, thence follow McKinney Road south to Fremaux Avenue (Shortcut Road), thence follow Fremaux Avenue (Shortcut Road) southeast to I-10; thence follow I-10 northeast to its intersection with Gause Blvd., also the point of beginning.

Precinct S24

Commence at the intersection of Sargent Alfred St. and Old Spanish Trail, also the point of beginning; thence follow Old Spanish Trail southeast to its intersection with Terrace Avenue; thence follow Terrace Avenue northeast and north to its intersection with Ash Street; thence follow Ash Street west to its intersection with 10th Street; thence follow 10th Street north to its intersection with Public Street; thence follow Public Street west to its intersection with 8th Street; thence follow 8th Street north to its intersection with Cleveland Street; thence follow Cleveland Street west, northwest, west, and northwest to its intersection with Mary St.; thence follow Mary St. south to its intersection with Codifer St.; thence follow Codifer St. southeast to its intersection with Sgt. Alfred Dr.; thence follow Sgt. Alfred Dr. southwest to its intersection with Old Spanish Trail, also the point of beginning.

Precinct S25

Commence at the intersection of 9th St. and Fremaux Avenue, also the point of beginning; thence follow Fremaux Avenue east to its intersection with the W-14 Canal; thence follow the W-14 Canal southwest, south, southeast, and south to its intersection with Daney Street; thence follow Daney Street west to its intersection with 10th Avenue; thence follow 10th Avenue south to its intersection with Public Street; thence follow Public Street west to its intersection with 8th Street; thence follow 8th Street north to its intersection with Cleveland Street; thence follow Cleveland Street west, northwest, west to its intersection with a southern branch of Bayou Bonfouca; thence follow said branch northwest to its intersection with Carey St.; thence follow Carey St. north to its intersection with Brakefield St.; thence follow Brakefield St. east to its intersection with 1st St.; thence follow 1st St. north to its intersection with Robert St.; thence follow Robert St. east to its intersection with 2nd St.; thence follow 2nd St. north to its intersection with Erlanger St.; thence follow Erlanger St. east to its intersection with 5th St.; thence follow 5th St. north to its intersection with Warren St.; thence follow Warren St. east to its intersection with 9th St.; thence follow 9th St. north to its intersection with Fremaux Avenue, also the point of beginning.

Precinct S26

Commence at the intersection of Pontchartrain Drive and Spartan Drive, also the point of beginning; thence follow Spartan Drive southeast to its intersection with Lauren Plaza Ditch, thence follow Lauren Plaza Ditch north east and east to its intersection of W-20 Canal; thence follow the W-20 Canal northwest and north to its intersection of Hickory Drive; thence follow Hickory Drive northwest and west to its intersection with Broad Street; thence follow Broad Street northwest to its intersection with Pontchartrain Drive; thence follow Pontchartrain Drive southwest to its intersection with Spartan Drive, also the point of beginning.

Precinct 101

Commence at the intersection of the St. Tammany Parish/Tangipahoa Parish boundary line and the Tchefoncté River, also the point of beginning; thence follow the Tchefoncté River southeast, south, southeast, southwest and south to its intersection with Hwy. 190; thence follow Hwy. 190 west, north west and west to its intersection with the St. Tammany Parish/Tangipahoa Parish boundary line; thence follow the St. Tammany Parish/Tangipahoa Parish boundary line north to its intersection with the Tchefoncté River, also the point of beginning.

****Precinct 102 (split into 102 & 112)**

Commence at the intersection of the St. Tammany Parish/Tangipahoa Parish boundary line and Hwy. 22, also the point of beginning; thence follow Hwy. 22 east and southeast to its intersection with Black River; thence follow the meanderings of Black River in a general southerly direction to its intersection with the shore line of Lake Pontchartrain; thence follow the shore line and its meanderings west and southwest to its intersection with the St. Tammany Parish/Tangipahoa Parish boundary line; thence follow the St. Tammany Parish/Tangipahoa Parish boundary line north to its intersection with Hwy 22, also the point of beginning.

****Precinct 103 (split into 103 & 113)**

Commence at the intersection of Christwood Blvd. and Hwy, 21, also the point of beginning; thence follow Hwy. 21 southwest and south to its intersection with Bayou De Zaire; thence follow Bayou De Zaire east and southeast to its intersection with the Tchefoncté River; thence follow the Tchefoncté River north, east, north, northwest, east, north, northwest, north, northeast, southeast, northeast, south, southeast, east, north, east, southeast, east, north, northeast, and northwest to its intersection with an overhead powerline; thence follow powerline west and northwest to its intersection with Christwood Blvd.; thence follow Christwood Blvd. south, southeast, southwest, west, northwest and west to its intersection with Hwy. 21, also the point of beginning.

****Precinct 104 (split into 104 & 114)**

Commence at the intersection of Hwy. 1077 and Brewster Road, also the point of beginning; thence follow Hwy. 1077 southeast to its intersection with Dummy Line Road; thence follow Dummy Line Road northwest to its intersection with Black River; thence follow the meanderings of Black River in a general northerly direction to its intersection with Brewster Road; thence follow Brewster Road east to its intersection with Hwy. 1077, also the point of beginning.

****Precinct 105 (split into 105 & 115)**

Commence at the intersection of Hwy. 1085 (Bootlegger Road) and Hwy. 1077, also the point of beginning; thence follow Hwy. 1085 (Bootlegger Road) east to its intersection with Ochsner Blvd.; thence follow Ochsner Blvd. south and southeast to its intersection with Hwy. 21; thence follow Hwy. 21 south to its intersection with I-12; thence follow I-12 northwest to its intersection with Hwy. 1077; thence follow Hwy. 1077 northwest to its intersection with Hwy. 1085 (Bootlegger Road), also the point of beginning.

****Precinct 106 (split into 106 & 116)**

Commence at the intersection of the St. Tammany Parish/Tangipahoa Parish boundary line and I-12, also the point of beginning; thence follow I-12 southeast to its intersection with Hwy. 1085 (Bootlegger Road); thence follow Hwy. 1085 (Bootlegger Road) southwest and south to its intersection with Hwy. 22; thence follow Hwy. 22 west to its intersection with the St. Tammany Parish/Tangipahoa Parish boundary line; thence follow the St. Tammany Parish/Tangipahoa Parish boundary line north to its intersection with I-12, also the point of beginning.

Precinct 107

Commence at the intersection of Hwy. 1077 and I-12, also the point of beginning; thence follow I-12 southeast to its intersection with Hwy. 21; thence follow Hwy. 21 southwest to its intersection with Dummy Line Road; thence follow Dummy Line Road northwest to its intersection Hwy. 1077; thence follow Hwy. 1077 north and northwest to its intersection with I-12, also the point of beginning.

****Precinct 108 (split into 108 & 118)**

Commence at the intersection of the St. Tammany Parish/Tangipahoa Parish boundary line and the intersection with Hwy. 190; thence follow Hwy. 190 east and southeast to its intersection with Hwy. 1077; thence follow Hwy. 1077 southeast to its intersection with I-12; thence follow I-12 northwest to its intersection of St. Tammany Parish/Tangipahoa Parish boundary line; thence follow the St. Tammany Parish/Tangipahoa Parish boundary line north to its intersection with the Hwy. 190, also the point of beginning.

Precinct 109

Commence at the intersection of Hwy. 1077 and Brewster Rd, also the point of the beginning; thence follow Hwy. 1077 southeast to its intersection with Dummy Line Road; thence follow Dummy Line Road northwest to its intersection with the Black River; thence follow the meanderings of the Black River in a general northerly direction to its intersection with Brewster Road; thence follow Brewster Road east to its intersection with Hwy. 1077, also the point of beginning.

Precinct 110

Commence at the intersection of I-12 and the Tchefuncte River, also the point of beginning; thence follow the Tchefuncte River northeast, north, west, north, northeast, northwest, west, and northwest to its intersection with Soap and Tallow Branch; thence follow Soap and Tallow Branch west, northwest, and southwest to its intersection with Rousseau Drive; thence follow Rousseau Drive southeast to its intersection with Hwy. 1085 (Bootlegger Road); thence follow Hwy. 1085 (Bootlegger Road east and southeast to its intersection with Hwy. 21; thence follow Hwy. 21 south west to its intersection with I-12; thence follow I-12 southeast to its intersection with the Tchefuncte River, also the point of beginning.

Precinct 111

Commence at the intersection of Brewster Road and Perrilloux Road, also the point of beginning; thence follow Perrilloux Road south, east, and southwest to its intersection with Hwy. 22; thence follow Hwy. 22 northwest and west to its intersection with Hwy. 1085 (Bootlegger Road), thence follow Hwy. 1085 (Bootlegger Road) north to its intersection of Brewster Road; thence follow Brewster Road east to its intersection of Perrilloux Road, also the point of beginning.

****Precinct 112 (newly created / split from 102)**

Commence at the intersection of Hwy. 22 and Perrilloux Road, also the point of beginning; thence follow Perrilloux Road northeast, west, and north to its intersection with Brewster Road; thence follow Brewster Road east to its intersection with the Black River; thence follow the meanderings of the Black River in a general southerly direction to its intersection with Hwy. 22; thence follow Hwy. 22 northwest to its intersection with Perrilloux Road, also the point of beginning.

****Precinct 113 (newly created / split from 103)**

Commence at the intersection of Christwood Blvd. and Hwy. 21, also the point of beginning; thence follow Hwy. 21 northeast to its intersection with I-12; thence follow I-12 southeast to its intersection with the Tchefuncte River; thence follow the Tchefuncte River south and southeast to its intersection with an overhead powerline; thence follow powerline west and northwest to its intersection with Christwood Blvd.; thence follow Christwood Blvd. south, southeast, southwest, west, northwest and west to its intersection with Hwy. 21, also the point of beginning.

**** Precinct 114 (newly created / split from 104)**

Commence at the intersection of I-12 and Hwy. 1077, also the point of the beginning; thence follow Hwy. 1077 southeast to its intersection with Brewster Road; thence follow Brewster Road west to its intersection with Perrilloux Road; thence follow Perrilloux Road north to its intersection with Hwy. 1085; thence follow Hwy. 1085 northeast to its intersection with I-12; thence follow I-12 southeast to its intersection with Hwy. 1077, also the point of beginning

****Precinct 115 (newly created / split from 105)**

Commence at the intersection of Ochsner Blvd. and Hwy. 1085 (Bootlegger Road), also the point of beginning; thence follow Hwy. 1085 (Bootlegger Road) east and southeast to its intersection with Hwy. 21; thence follow Hwy. 21 southwest to its intersection with Ochsner Blvd.; thence follow Ochsner Blvd. northwest and north to its intersection with Hwy. 1085 (Bootlegger Road), also the point of beginning.

****Precinct 116 (newly created / split from 106)**

Commence at the intersection of Hwy. 1085 (Bootlegger Road) and Perrilloux Road; thence follow Perrilloux Road south to its intersection with Brewster Road; thence follow Brewster Road west to its intersection with Hwy. 1085 (Bootlegger Road); thence follow Hwy. 1085 (Bootlegger Road) north and northeast to its intersection with Perrilloux Road, also the point of beginning.

****Precinct 118 (newly created / split from 108)**

Commence at the intersection of Hwy. 1077 and Hwy. 190; thence follow Hwy. 190 southeast and east to its intersection with the Tchefuncte River; thence follow the Tchefuncte River generally southeast to its intersection with Soap and Tallow Branch; thence follow Soap and Tallow Branch west, northwest, and southwest to its intersection with Rousseau Drive; thence follow Rousseau Drive southeast to its intersection with Hwy. 1085 (Bootlegger Road); thence follow Hwy. 1085 (Bootlegger Road) west to its intersection of Hwy. 1077; thence follow Hwy. 1077 northwest to its intersection with Hwy. 190, also the point of beginning.

Precinct 201

Commence at the intersection of the St. Tammany Parish/Washington Parish boundary line and the Tchefuncte River, which is also the St. Tammany Parish/Tangipahoa Parish boundary line, also the point of beginning; thence follow the Tchefuncte River south, southeast, south, southeast, south, southwest, southeast, and south to its intersection with Hwy. 40 (Uneedus Road); thence follow Hwy. 40 (Uneedus Road) southeast and south to its intersection with Anthony Road; thence follow Anthony Road north to its intersection with Lee Settlement Road; thence follow Lee Settlement Road east to its intersection with Hay Hollow Road; thence follow Hay Hollow Road northwest, north, east, north, east, north, and northeast to its intersection with Hwy. 25; thence follow Hwy. 25 southeast to its intersection with Verger Road; thence follow Verger Road east to its intersection with Varnado Road; thence follow Varnado Road north to its intersection with an unnamed road south of Dismal Branch; thence follow the unnamed road east, north, east, and northwest to its intersection with Dismal Branch; thence follow Dismal Branch east to its intersection with the Bogue Falaya River; thence follow the Bogue Falaya River southeast, south, and southwest to its intersection with Hwy. 40 (Bush-Folsom Road); thence follow Hwy. 40 (Bush-Folsom Road) east to its intersection with Hwy. 1080 (a/ka Factory Rd.); thence follow Hwy. 1080 (a/ka Factory Rd.) north, east and north to its intersection with Hwy. 437; thence follow Hwy. 437 north to its intersection with the St. Tammany Parish/Washington Parish boundary line; thence follow said line northwest to its intersection with the St. Tammany Parish/Tangipahoa Parish boundary line and the Tchefuncte River, also the point of beginning.

Precinct 202

Commence at the intersection of Hwy. 40 (Uneedus Road) and the Tchefuncte River, which is also the St. Tammany Parish/Tangipahoa Parish boundary line, also the point of beginning; thence follow the Tchefuncte River south, southwest, east, south, southeast, southwest, east, south, southwest, and southeast to its intersection with Hwy. 1077 & Hwy. 1078 (Bennett Bridge Road); thence follow Hwy. 1077 & Hwy. 1078 (Bennett Bridge Road) northeast, east, and southeast to its intersection with Hwy. 1077 (Savannah Road); thence follow Hwy. 1077 (Savannah Road) northeast to its intersection with Hwy. 1077 (Willie Road); thence follow Hwy. 1077 (Willie Road) southeast, east, southeast, and east to its intersection with Hwy. 25; thence follow Hwy. 25 southeast to its intersection with Million Dollar Road; thence follow Million Dollar Road east to its intersection with the Bogue Falaya River; thence follow the Bogue Falaya River northeast, north, northwest, north, northeast, and north to its intersection with Simalusa Creek; thence follow Simalusa Creek northeast, southeast, and northeast to its intersection with an unnamed road connecting Bruhl Road and Jesse Hyatt Road; thence follow the unnamed road west to its intersection with Bruhl Road; thence follow Bruhl Road north, west, and southwest to its intersection with the Bogue Falaya River; thence follow the Bogue Falaya River northwest, north, northwest, north, and northwest to its intersection with Beason Creek; thence follow Beason Creek north northeast, north, and northeast to its intersection with Hwy. 40; thence follow Hwy. 40 west to its intersection with the Bogue Falaya River; thence follow the Bogue Falaya River southwest, southeast, south, and southeast to its intersection with Morgan Branch; thence follow Morgan Branch west, southwest, northwest, west, southwest, northwest, and north to its intersection with Hwy. 40 (Uneedus Road); thence follow Hwy. 40 (Uneedus Road) southwest, west, and north to its intersection with the Tchefuncte River, which is also the St. Tammany Parish/Tangipahoa Parish boundary line, also the point of beginning.

Precinct 203

Commence at the intersection of the St. Tammany Parish/Washington Parish boundary line and Hwy. 437 (Middle Road), also the point of beginning; thence follow Hwy. 437 (Middle Road) southwest, southeast, south, southwest, south, and southeast to its intersection with Bill's Creek; thence follow Bill's Creek southwest, west, southwest, south, southwest, south, southwest, and southeast to its intersection with Simalusa Creek; thence follow Simalusa Creek south, southwest, northwest, and southwest to its intersection with the Bogue Falaya River; thence follow the Bogue Falaya River south, southwest, south, southeast, south, and southwest to its intersection with Million Dollar Road; thence follow Million Dollar Road east, north, east, north, and east to its intersection with La Tice Branch; thence follow La Tice Branch northeast, east, and northeast to its intersection with Hwy. 40 (Bush-Folsom Road); thence follow Hwy. 40 (Bush-Folsom Road) northwest to its intersection with Jarrell Road; thence follow Jarrell Road northeast, north, and east to its intersection with Hwy. 1129 (Lee Road); thence follow Hwy. 1129 (Lee Road) north and northwest to its intersection with Lee Road; thence follow Lee Road north, northeast, north, northwest, northeast, and north to its intersection with the St. Tammany Parish/Washington Parish boundary line; thence follow the St. Tammany Parish/Washington Parish boundary line northwest to its intersection with Hwy. 437 (Middle Road), also the point of beginning.

Precinct 204

Commence at the intersection of Hwy. 1080 (North Factory Road) and Hwy. 437 (Middle Road), also the point of beginning; thence follow Hwy. 437 (Middle Road) southwest, southeast, south, southwest, south, and southeast to its intersection with Bill's Creek; thence follow the meanderings of Bill's Creek southwest, west, southwest, south, southwest, south, southwest, and southeast to its intersection with Simalusa Creek; thence follow the meanderings of Simalusa Creek south and southwest to its intersection with an unnamed road connecting Bruhl Road and Jesse Hyatt Road; thence follow the unnamed road west to its intersection with Bruhl Road; thence follow Bruhl Road north, west, and southwest to its intersection with the Bogue Falaya River; thence follow the meanderings of the Bogue Falaya River northwest, north, northwest, north, and northwest to its intersection with Beason Creek; thence follow the meanderings of Beason Creek north, northeast, north, northeast, north, and northeast to its intersection with Hwy. 40; thence follow Hwy. 40 west to its intersection with Hwy. 1080 (North Factory Road); thence follow Hwy. 1080 (North Factory Road) north, northeast, east, north, and northeast to its intersection with Hwy. 437 (Middle Road), also the point of beginning.

Precinct 205

Commence at the intersection of the St. Tammany Parish/Washington Parish boundary line and Lee Road, also the point of beginning; thence follow Lee Road south, southwest, southeast, south, southwest, and south to its intersection with Hwy. 1129 (Lee Road); thence follow Hwy. 1129 (Lee Road) southeast and south to its intersection with Fairhaven Road; thence follow Fairhaven Road east to its intersection with a Louisiana Gas pipeline and right-of-way; thence follow the Louisiana Gas pipeline and right-of-way south and southeast to its intersection with Hwy. 1081 (Stafford Road); thence follow Hwy. 1081 (Stafford Road) east and southeast to its intersection with Pat O'Brien Road; thence follow Pat O'Brien Road north, northwest, north, and east to its intersection with Hwy. 1082 (Old Military Road); thence follow Hwy. 1082 (Old Military Road) northeast, north, and northeast to its intersection with Hwy. 40 (Bush-Folsom Road); thence follow Hwy. 40 (Bush-Folsom Road) northwest to its intersection with Isabel Swamp Road; thence follow Isabel Swamp Road continuing northwest, then northeast, north, northwest, and northeast to its intersection with the St. Tammany Parish/Washington Parish boundary line; thence follow the St. Tammany Parish/Washington Parish boundary line northwest to its intersection with Lee Road, also the point of beginning.

Precinct 206

Commence at the intersection of La Tice Branch and Hwy. 40 (Bush-Folsom Road), also the point of beginning; thence follow Hwy. 40 (Bush-Folsom Road) northwest to its intersection with Jarrell Road; thence follow Jarrell Road northeast, north, and east to its intersection with Hwy. 1129 (Lee Road); thence follow Hwy. 1129 (Lee Road) north to its intersection with Fairhaven Road; thence follow Fairhaven Road east to its intersection with a Louisiana Gas pipeline and right-of-way; thence follow the Louisiana Gas pipeline and right-of-way south and southeast to its intersection with Hwy. 1081 (Stafford Road); thence follow Hwy. 1081 (Stafford Road) east and southeast to its intersection with Pat O'Brien Road; thence follow Pat O'Brien Road north, northwest, north, and east to its intersection with Hwy. 1082 (Old Military Road); thence follow Hwy. 1082 (Old Military Road) southwest to its intersection with a Louisiana Gas pipeline and right-of-way; thence follow the Louisiana Gas pipeline and right-of-way northwest to its intersection with an electric power line; thence follow the electric power line southwest to its intersection with North Fitzmorris Road; thence follow North Fitzmorris Road northwest and west to its intersection with La Tice Branch; thence follow La Tice Branch north, northeast, north, northeast, north, northwest, and northeast to its intersection with Hwy. 40 (Bush-Folsom Road), also the point of beginning.

Precinct 207

Commence at the intersection of Hwy. 25 and Hwy. 1078 (Bennett Bridge Road), also the point of beginning; thence follow Hwy. 1078 (Bennett Bridge Road) west and northwest to its intersection with Cowpen Branch; thence follow Cowpen Branch south and southwest to its intersection with the Tchefuncte River; thence follow the Tchefuncte River northwest, west, northwest, north, and northwest to its intersection with Hwy. 1077 & Hwy. 1078 (Bennett Bridge Road); thence follow Hwy. 1077 & Hwy. 1078 (Bennett Bridge Road) northeast, east, and southeast to its intersection with Hwy. 1077 (Savannah Road); thence follow Hwy. 1077 (Savannah Road) northeast to its intersection with Hwy. 1077 (Willie Road); thence follow Hwy. 1077 (Willie Road) southeast, east, southeast, and east to its intersection with Hwy. 25; thence follow Hwy. 25 southeast to its intersection with Hwy. 1078 (Bennett Bridge Road), also the point of beginning.

Precinct 301

Commence at the intersection of Hwy. 25 and Hwy. 1078 (Bennett Bridge Road), also the point of beginning; thence follow Hwy. 1078 (Bennett Bridge Road) west and northwest to its intersection with Cowpen Branch; thence follow Cowpen Branch south and southwest to its intersection with the Tchefuncte River; thence follow the Tchefuncte River southeast, south, southeast, south, and southeast to its intersection with Horse Branch; thence follow Horse Branch north, northeast to its intersection with an eastern branch of Horse Branch; thence follow said eastern branch of Horse Branch north, northeast to its intersection with Horse Branch Road; thence follow Horse Branch Road north, east and north to its intersection with Lake Ramsey Road, thence follow Lake Ramsey Road east to its Hwy. 25; thence follow Hwy. 25 northwest to its intersection with Hwy. 1078 (Bennett Bridge Road), also the point of beginning.

Precinct 302

Commence at the intersection of La Tice Branch and Million Dollar Road, also the point of beginning; thence follow Million Dollar Road west, south, west, south, and west to its intersection with Hwy. 25; thence follow Hwy. 25 southeast to its intersection with River Road; thence follow River Road northeast, southeast, east, and southeast to its intersection with Hosmer Mill Road; thence follow Hosmer Mill Road northeast to its intersection with the Bogue Falaya River; thence follow the Bogue Falaya River southeast, south, east, northeast, southeast, east, southeast, east, south, southeast, southwest, and southeast to its intersection with Hwy. 437 (Lee Road); thence follow Hwy. 437 (Lee Road) northeast and north to its intersection with North Fitzmorris Road; thence follow North Fitzmorris Road northwest to its intersection with La Tice Branch; thence follow La Tice Branch north, northeast, north, northeast, and north to its intersection with Million Dollar Road, also the point of beginning.

Precinct 303

Commence at the intersection of Hwy. 21 (Military Road) and Hwy. 1082 (Old Military Road), also the point of beginning; thence follow Hwy. 1082 (Old Military Road) north and northeast to its intersection with a Louisiana Gas pipeline and right-of-way; thence follow the Louisiana Gas pipeline and right-of-way northwest to its intersection with an electric power line; thence follow the electric power line southwest to its intersection with Hwy. 437 (Lee Road); thence follow Hwy. 437 (Lee Road) south and southwest to its intersection with Johnsen Road; thence follow Johnsen Road east to its intersection with Dogwood Lane; thence follow Dogwood Lane south, southwest, and south to its intersection with Holly Drive; thence follow Holly Drive southeast to its intersection with Hwy. 21 (Military Road); thence follow Hwy. 21 (Military Road) northeast to its intersection with Wilson Road; thence follow Wilson Road east to its intersection with Hwy. 59; thence follow Hwy. 59 north to its intersection with Hwy. 21 (Military Road); thence follow Hwy. 21 (Military Road) southwest to its intersection with Hwy. 1082 (Old Military Road), also the point of beginning.

Precinct 304

Commence at the intersection of Hwy. 59 and Wilson Road, also the point of beginning; thence follow Wilson Road west to its intersection with Hwy. 21 (Military Road); thence follow Hwy. 21 (Military Road) south and southwest to its intersection with Holly Drive; thence follow Holly Drive northwest to its intersection with the Little Bogue Falaya River; thence follow the Little Bogue Falaya River southwest, west, southwest, and west to its intersection with the Bogue Falaya River; thence follow the Bogue Falaya River south, southwest, southeast, south, and southwest to its intersection with Hwy. 190; thence follow Hwy. 190 northeast to its intersection with Hwy. 21 (Military Road); thence follow Hwy. 21 (Military Road) north and northeast to its intersection with Hwy. 36; thence follow Hwy. 36 east to its intersection with Dahlia Street; thence follow Dahlia Street north to its intersection with Progress Street; thence follow Progress Street west to its intersection with Rose Street; thence follow Rose Street north to its intersection with Emancipation Street; thence follow Emancipation Street west to its intersection with United Church Road; thence follow United Church Road north to its intersection with Lowe Davis Road; thence follow Lowe Davis Road northeast to its intersection with Hwy. 59; thence follow Hwy. 59 north to its intersection with Wilson Road, also the point of beginning.

Precinct 305

Commence at the intersection of Hwy. 36 and Hwy. 21 (Military Road), also the point of beginning; thence follow Hwy. 21 (Military Road) southwest and south to its intersection with Hwy. 190; thence follow Hwy. 190 southeast to its intersection with the Abita River; thence follow the Abita River east, northeast, east, northeast, east, and northeast to its intersection with an unnamed branch of the Abita River; thence follow the unnamed branch north and northwest to its intersection with Hwy. 36; thence follow Hwy. 36 west and southwest to its intersection with Hwy. 21 (Military Road), also the point of beginning.

Precinct 306

Commence at the intersection of Hwy. 190 and Ponchitalawa Creek, also the point of beginning; thence follow Ponchitalawa Creek west to its intersection with the Tchefuncte River; thence follow the Tchefuncte River northwest and northeast to its intersection with the Interstate 12; thence follow Interstate 12, southeast to its intersection with Hwy. 190; thence follow Hwy. 190 southwest to its intersection with Ponchitalawa Creek, also the point of beginning.

Precinct 307

Commence at the intersection of Hwy. 190 and Ninth Avenue, also the point of beginning; thence follow Ninth Avenue east to its intersection with K Street; thence follow K Street north to its intersection with Quincy Avenue; thence follow Quincy Avenue east to its intersection with Seventh Street; thence follow Seventh Street south to its intersection with Madison Avenue; thence follow Madison Avenue east to its intersection with Eleventh Street; thence follow Eleventh Street south to its intersection with Helenbirg Road; thence follow Helenbirg Road southwest to its intersection with an unnamed creek; thence follow the unnamed creek northwest to its intersection with a drainage canal; thence follow the drainage canal north, northeast, northwest, and north to its intersection with Crestwood Blvd.; thence follow Crestwood Blvd. west to its intersection with Hwy. 190; thence follow Hwy. 190 north to its intersection with Ninth Avenue, also the point of beginning.

Precinct 308

Commence at the intersection of Hwy. 190 and 2nd Avenue, also the point of beginning; thence follow 2nd Avenue east and northeast to its intersection with Harrison Avenue; thence follow Harrison Avenue east to its intersection with a canal leading into the southern branch of the Abita River; thence follow the canal north to its intersection with the southern branch of the Abita River; thence follow the southern branch of the Abita River west and northwest to its intersection with the Abita River; thence follow the Abita River west, southwest, west, southwest, and west to its intersection with Hwy. 190; thence follow Hwy. 190 southeast to its intersection with 2nd Avenue, also the point of beginning.

Precinct 309

Commence at the intersection of Hwy. 190 and Harrison Avenue, also the point of beginning; thence follow Harrison Avenue east, northeast, and east to its intersection with Sixth Street; thence follow Sixth Street south to its intersection with Quincy Avenue; thence follow Quincy Avenue west, south, and west to its intersection with Hwy. 190; thence follow Hwy. 190 north to its intersection with Harrison Avenue, also the point of beginning.

Precinct 310

Commence at the intersection of Hwy. 190 and Interstate 12, also the point of beginning; thence follow Interstate 12 west to its intersection with the Tchefuncte River; thence follow the Tchefuncte River northwest and northeast to its intersection with the Bogue Falaya River; thence follow the Bogue Falaya River continuing northeast, then north, northeast, northwest, north, northeast, north, east, northeast, north, and northeast to its intersection with Hwy. 190; thence follow Hwy. 190 northeast, south, southeast, and south to its intersection with Interstate 12, also the point of beginning.

Precinct 312

Commence at the intersection of Lincoln Street and Eleventh Street, also the point of beginning; thence follow Eleventh Street south to its intersection with Helenbirg Road; thence follow Helenbirg Road southwest to its intersection with an unnamed creek; thence follow the unnamed creek northwest to its intersection with a drainage canal; thence follow the drainage canal north, northeast, northwest, and north to its intersection with Crestwood Blvd.; thence follow Crestwood Blvd. west to its intersection with Hwy. 190; thence follow Hwy. 190 south to its intersection with the Ponchitalawa Creek; thence follow the meanderings of the Ponchitalawa Creek east and northeast to its intersection with Hwy. 59; thence follow Hwy. 59 north to its intersection with Parker Drive; thence follow Parker Drive northwest to its intersection with Soell Drive; thence follow Soell Drive northeast to its intersection with Eleventh Avenue; thence follow Eleventh Avenue northwest to its intersection with North Street; thence follow North Street southwest to its intersection with Lincoln Street; thence follow Lincoln Street west to its intersection with Eleventh Street, also the point of beginning.

Precinct 313

Commence at the intersection of Sixth Street and Harrison Avenue, also the point of beginning; thence follow Harrison Avenue east to its intersection with Fuchsia Street; thence follow Fuchsia Street south to its intersection with Washington Avenue; thence follow Washington Avenue west to its intersection with Eleventh Street; thence follow Eleventh Street south to its intersection with Madison Avenue; thence follow Madison Avenue west to its intersection with Seventh Street; thence follow Seventh Street north to its intersection with Quincy Avenue; thence follow Quincy Avenue west to its intersection with Sixth Street; thence follow Sixth Street north to its intersection with Harrison Avenue, also the point of beginning.

Precinct 314

Commence at the intersection of Hwy. 25 and Lake Ramsey Road, also the point of beginning; thence follow Lake Ramsey Road west to its intersection with Horse Branch Road; thence follow Horse Branch Road south, west and south to its intersection with Penn Mill Rd.; thence follow Penn Mill Rd. southeast, south, to its intersection with an electric power line; thence follow the electric power line northeast to its intersection with Hwy. 25; thence follow Hwy. 25 northwest to its intersection with Lake Ramsey Road, also the point of beginning.

Precinct 401

Commence at the intersection of Hwy. 22 and the Tchefuncte River, also the point of beginning; thence follow the meanderings of the Tchefuncte River south, southwest, and south to its intersection with an unnamed canal which runs parallel with the shoreline of Lake Pontchartrain; thence follow the unnamed canal southeast, east, and southeast to its intersection with Bayou Chinchuba; thence follow Bayou Chinchuba northeast to its intersection with an unnamed creek northwest of Lewisburg; thence follow the unnamed creek northwest to its intersection with an unnamed road extension of Heavens Drive; thence follow along the extension north, northwest, and northeast to its intersection with an electric power line running to the northwest and southeast; thence follow the electric power line northwest approximately 1,050', thence continue north along said power line approximately 420' thence continue west along said power line approximately 700', thence continue northwest along said power line approximately 840' to its intersection with an electric power line that runs to the north; thence follow the north bound electric power line north approximately 570', thence continue northwest along said power line approximately 890' to a point approximately 230' east of Woodridge Boulevard, thence follow the power line as it runs parallel to Woodridge Boulevard approximately 4,000' to its intersection with Hwy. 22; thence follow Hwy. 22 west, southwest and west to its intersection with the Tchefuncte River, also the point of beginning.

Precinct 402

Commence at the intersection of Hwy. 22 and the Tchefuncte River, also the point of beginning; thence follow the Tchefuncte River north, east, north, northwest, east, north, northwest, north, northeast, southeast, northeast, and south to its intersection with a branch of the Tchefuncte River; thence follow the branch of the Tchefuncte River southwest to its intersection with the boat launch of Beau Chene Marina; thence follow the boat launch west, south, and east to its intersection with Marina Blvd.; thence follow Marina Blvd. southeast, southwest, southeast, and southwest to its intersection with Hwy. 22; thence follow Hwy. 22 northwest and southwest to its intersection with the Tchefuncte River, also the point of beginning.

Precinct 403

Commence at the intersection of Hwy. 190 and Greenleaves Blvd., also the point of beginning; thence follow Greenleaves Blvd. northeast to its intersection with the retention pond between Chateau Loire Blvd. and Richard Drive West; thence follow the retention pond southeast and southwest to its intersection with a drainage ditch; thence follow the drainage ditch south and southeast to its intersection with Sandlewood Drive; thence follow Sandlewood Drive east to its intersection with Goldenwood Street; thence follow Goldenwood Street southwest to its intersection with Driftwood Street; thence follow Driftwood Street southeast to its intersection with Wilkinson Street; thence follow Wilkinson Street southwest to its intersection with America Street; thence follow America Street southeast to its intersection with the Tammany Trace; thence follow the Tammany Trace northeast to its intersection with Destin Street; thence follow Destin Street southeast to its intersection with Lamarque Street; thence follow Lamarque Street southwest to its intersection with East Florida Street; thence follow East Florida Street northwest to its intersection with Hwy. 190; thence follow Hwy. 190 north and northwest to its intersection with Greenleaves Blvd., also the point of beginning.

Precinct 404

Commence at the intersection of Hwy. 190 and Country Club Drive, also the point of beginning; thence follow Country Club Drive west and northwest to its intersection where Country Club Drive meets the boat launch of Covington Country Club; thence follow the boat launch continuing northwest to its intersection with the Tchefuncte River; thence follow the Tchefuncte River southwest and south to its intersection with Bayou Tete L'Ours; thence follow Bayou Tete L'Ours southeast to its intersection with Hwy. 190; thence follow Hwy. 190 north to its intersection with Country Club Drive, also the point of beginning.

Precinct 405

Commence at the intersection of Hwy. 59 and Sharp Road, also the point of beginning; thence follow Sharp Road west, southwest, northwest, and west to its intersection with Westwood Drive; thence follow Westwood Drive northeast and north to its intersection with Dove Park Road; thence follow Dove Park Road east to its intersection with Buras Ranch Road; thence follow Buras Ranch Road north to its intersection with Little Ponchitalawa Creek; thence follow Little Ponchitalawa Creek west and northwest to its intersection with Ponchitalawa Creek; thence follow Ponchitalawa Creek north to its intersection with I-12; thence follow I-12 southeast to its intersection with Hwy. 59; thence follow Hwy. 59 south and southwest to its intersection with Sharp Road, also the point of beginning.

Precinct 406

Commence at the intersection of Hwy. 1088 and Kipp Road, also the point of beginning; thence follow Kipp Road north and northeast to its intersection with Hwy. 36 (Hickory Hwy.); thence follow Hwy. 36 (Hickory Hwy.) northwest to its intersection with the southern branch of the Abita River; thence follow the southern branch of the Abita River southwest, west, and northwest to its intersection with the Tammany Trace; thence follow the Tammany Trace southwest to its intersection with Hoffman Road; thence follow Hoffman Road west to its intersection with Hwy. 59; thence follow Hwy. 59 south to its intersection with Ponchitalawa Creek; thence follow Ponchitalawa Creek east, southeast, south, southeast, southwest, southeast, east, and northeast to its intersection with an electric power line; thence follow the electric power line southeast to its intersection with another electric power line; thence follow this electric power line east and southeast to its intersection with Hwy. 1088; thence follow Hwy. 1088 northeast, east, and northeast to its intersection with Kipp Road, also the point of beginning.

Precinct 407

Commence at the intersection of Sharp Road and the Tammany Trace, also the point of beginning; thence follow the Tammany Trace south to its intersection with Bayou Chinchuba; thence follow Bayou Chinchuba southwest, south, and southwest to its intersection with Hwy. 190; thence follow Hwy. 190 northwest to its intersection with Meadowbrook Blvd.; thence follow Meadowbrook Blvd. east to its intersection with Meadowbrook Drive; thence follow Meadowbrook Drive north to its intersection with Clearwater Drive; thence follow Clearwater Drive northeast to its intersection with Springwater Drive; thence follow Springwater Drive northwest to its intersection with Ridge Way Drive; thence follow Ridge Way Drive northeast to its intersection with Spanish Moss Court; thence follow Spanish Moss Court northwest to its intersection with a drainage ditch leading into a retention pond; thence follow the drainage ditch north to its intersection with the retention pond; thence follow the retention pond northwest to its intersection where the northwest corner of the retention pond flows into a culvert; thence follow the culvert continuing northwest to its intersection with Sharp Road; thence follow Sharp Road east, southeast, northeast, and east to its intersection with the Tammany Trace, also the point of beginning.

Precinct 408

Commence at the intersection of Butternut Lane and Sout Street, also the point of beginning; thence follow Sout Street south and southwest to its intersection with Labarre Street; thence follow Labarre Street northwest to its intersection with Albert Street; thence follow Albert Street southwest to its intersection with Dupard Street; thence follow Dupard Street northwest to its intersection with Lamarque Street; thence follow Lamarque Street northeast to its intersection with Destin Street; thence follow Destin Street northwest to its intersection with Hwy. 59; thence follow Hwy. 59 northeast and north to its intersection with Hwy. 1088; thence follow Hwy. 1088 northeast to its intersection with Spring Blvd.; thence follow Spring Blvd. southeast to its intersection with Sweet Bay Drive; thence follow Sweet Bay Drive southwest to its intersection with Chestnut Oak Drive; thence follow Chestnut Oak Drive south, southeast, and northeast to its intersection of Red Maple Drive; thence follow Red Maple Drive south to its intersection with Butternut Lane, thence follow Butternut Lane east to its intersection with Sout Street Sout Street, also the point of beginning.

Precinct 409

Commence at the intersection of Hwy. 1088 and I-12, also the point of beginning; thence follow I-12 southeast to its intersection with Log Cabin Road; thence follow Log Cabin Road southwest to its intersection with Cane Bayou; thence follow Cane Bayou south, southwest, and south to its intersection with Hwy. 190; thence follow Hwy. 190 southeast to its intersection with North Pontchartrain Drive; thence follow North Pontchartrain Drive north, northeast, east, and southeast to its intersection with Fish Hatchery Road; thence follow Fish Hatchery Road northeast, northwest, north, northeast, and north to its intersection with Beaver Ball Road; thence follow Beaver Ball Road northeast, north, northwest, north, and northwest to its intersection with Hwy. 1088; thence follow Hwy. 1088 southwest, west, and southwest to its intersection with I-12, also the point of beginning.

Precinct 410

Commence at the intersection of Lonesome Road and Greenleaves Blvd., also the point of beginning; thence follow Greenleaves Blvd. southeast and southwest to its intersection with the retention pond between Chateau Loire Blvd. and Richard Drive West; thence follow the retention pond southeast and southwest to its intersection with a drainage ditch; thence follow the drainage ditch south and southeast to its intersection with Sandlewood Drive; thence follow Sandlewood Drive east to its intersection with Goldenwood Street; thence follow Goldenwood Street southwest to its intersection with Driftwood Street; thence follow Driftwood Street southeast to its intersection with Wilkinson Street; thence follow Wilkinson Street southwest to its intersection with America Street; thence follow America Street southeast to its intersection with the Tammany Trace; thence follow the Tammany Trace northeast to its intersection with Lonesome Road; thence follow Lonesome Road west and southwest to its intersection with Greenleaves Blvd., also the point of beginning.

**Precinct 411 (split into 411 & 430)

Commence at the intersection of I-12 and Hwy. 59, also the point of beginning; thence follow Hwy. 59 south and southwest to its intersection with Lotus Road; thence follow Lotus Road and Lotus Road Extension east to its intersection with Bay Street; thence follow Bay Street south to its intersection with Viola Street; thence follow Viola Street east and south to its intersection with Hwy 1088; thence follow Hwy 1088 northeast to its intersection with I-12; thence follow I-12 northwest to its intersection with Hwy. 59, also the point of beginning.

Precinct 412

Commence at the intersection of Sycamore St. and Sout Street, also the point of beginning; thence follow Sout Street south to its intersection with a canal between Quail Creek South and New Canaan Hills subdivisions; thence follow the canal east, southeast, east, southeast, east, south, and east to its intersection with Log Cabin Road; thence follow Log Cabin Road northeast to its intersection with I-12; thence follow I-12 northwest to its intersection with Hwy. 1088; thence follow Hwy. 1088 southwest to its intersection with Sycamore St.; thence follow Sycamore St. south and west to its intersection with Sout Street, also the point of beginning.

Precinct 413

Commence at the intersection of Hwy. 190 and Hwy. 22, also the point of beginning; thence follow Hwy. 22 northwest to its intersection with Beau Chene Blvd.; thence follow Beau Chene Blvd. northeast to its intersection with Beau Chene Drive; thence follow Beau Chene Drive southeast, east, and north to its intersection with North Beau Chene Drive; thence follow North Beau Chene Drive northwest and west to its intersection with Kiskatom Lane; thence follow Kiskatom Lane northwest and north to its intersection with Bayou Tete L'Ours; thence follow Bayou Tete L'Ours southeast to its intersection with Hwy. 190; thence follow Hwy. 190 southwest to its intersection with Hwy. 22, also the point of beginning.

Precinct 414

Commence at the intersection of Lonesome Road and Hwy. 190; follow Hwy 190 northwest to its intersection with Bayou Chinchuba; thence follow the meanderings of Bayou Chinchuba northeast and east to its intersection with the Tammany Trace; thence follow the Tammany Trace southwest to its intersection with Lonesome Road; thence follow Lonesome Road northwest and southwest to its intersection with Hwy. 190, also the point of beginning.

Precinct 415

Commence at the intersection of Hwy. 190 and Lonesome Road, also the point of beginning; thence follow Lonesome Road northeast to its intersection with Greenleaves Blvd.; thence follow Greenleaves Blvd. southeast and southwest to its intersection with Hwy. 190; thence follow Hwy. 190 northwest to its intersection with Lonesome Road, also the point of beginning.

Precinct 416

Commence at the intersection of Desoto St. and Hwy. 190, also the point of beginning; thence follow Hwy. 190 southwest and south east to its intersection with Meadowbrook Blvd.; thence follow Meadowbrook Blvd. north east and east to its intersection with Meadowbrook Drive; thence follow Meadowbrook Drive north to its intersection with Clearwater Drive; thence follow Clearwater Drive northeast to its intersection with Springwater Drive; thence follow Springwater Drive northwest to its intersection with Ridge Way Drive; thence follow Ridge Way Drive northeast to its intersection with Spanish Moss Court; thence follow Spanish Moss Court east to its intersection with a drainage ditch leading into a retention pond; thence follow the drainage ditch north to its intersection with the retention pond; thence follow the retention pond northwest to its intersection where the northwest corner of the retention pond flows into a culvert; thence follow the culvert continuing northeast to its intersection with Sharp Road; thence follow Sharp Road west and southwest to its continuation of Desoto Street, thence continue on Desoto Street to its intersection of Hwy. 190, also the point of beginning.

Precinct 417

Commence at the intersection of Desoto Street and Hwy 190., also the point of beginning; thence follow Desoto Street northeast to its continuation as Sharp Road; thence follow Sharp Road continuing northeast, then east to its intersection with Westwood Drive; thence follow Westwood Drive northeast and north to its intersection with Judge Tanner Boulevard; thence follow Judge Tanner Boulevard west southwest and west to its intersection with Hwy. 190; thence follow Hwy. 190 south to its intersection with Desoto Street, also the point of beginning.

Precinct 418

Commence at the intersection of Hwy. 190 and Country Club Drive, also the point of beginning; thence follow Country Club Drive west and northwest to its intersection where Country Club Drive meets the boat launch of Covington Country Club; thence follow the boat launch continuing northwest to its intersection with the Tchefoncté River; thence follow the Tchefoncté River northeast to its intersection with Ponchitalawa Creek; thence follow Ponchitalawa Creek east to its intersection with Hwy. 190; thence follow Hwy. 190 south and southwest to its intersection with Country Club Drive, also the point of beginning.

Precinct 419

Commence at the intersection of Hwy. 22 and Beau Chene Blvd., also the point of beginning; thence follow Beau Chene Blvd. northeast to its intersection with Beau Chene Drive; thence follow Beau Chene Drive southeast, east, and north to its intersection with North Beau Chene Drive; thence follow North Beau Chene Drive northwest and west to its intersection with Kiskatom Lane; thence follow Kiskatom Lane northwest and north to its intersection with Bayou Tete L'Ours; thence follow Bayou Tete L'Ours northwest to its intersection with the Tchefoncté River; thence follow the Tchefoncté River west, northwest, west, southwest, west, northwest, and north to its intersection with a branch of the Tchefoncté River; thence follow the branch of the Tchefoncté River southwest to its intersection with the boat launch of Beau Chene Marina; thence follow the boat launch west, south, and east to its intersection with Marina Blvd.; thence follow Marina Blvd. southeast, southwest, southeast, and southwest to its intersection with Hwy. 22; thence follow Hwy. 22 southeast to its intersection with Beau Chene Blvd., also the point of beginning.

Precinct 420

Commence at the intersection of I-12 and Ponchitalawa Creek, also the point of beginning; thence follow Ponchitalawa Creek northwest, northeast, east, northwest, northeast, southeast, northeast, southeast, east, southeast, south, southeast, southwest, southeast, east, and northeast to its intersection with an electric power line; thence follow the electric power line southeast to its intersection with another electric power line; thence follow this electric power line east and southeast to its intersection with Hwy. 1088; thence follow Hwy. 1088 southwest to its intersection with I-12; thence follow I-12 northwest to its intersection with Ponchitalawa Creek, also the point of beginning.

Precinct 421

Commence at the intersection of Hwy. 22 and Heavens Drive, also the point of beginning, thence follow Heavens Drive south and southeast to its intersection with its unnamed road extension; thence follow along the extension south to its intersection with an electric power line running to the northwest and southeast; thence follow the electric power line northwest approximately 1,050', thence continue north along said power line approximately 420' thence continue west along said power line approximately 700', thence continue northwest along said power line approximately 840' to its intersection with an electric power line that runs to the north; thence follow the north bound electric power line north approximately 570', thence continue northwest along said power line approximately 890' to a point approximately 230' east of Woodridge Boulevard, thence follow the power line as it runs parallel to Woodridge Boulevard approximately 4,000' to its intersection with Hwy. 22; thence follow Hwy. 22 southeast to its intersection with Heavens Drive, also the point of beginning.

Precinct 422

Commence at the intersection of Hwy. 1088 and Soult St., also the point of beginning; thence follow Soult St. south to its intersection with Sycamore St.; thence follow Sycamore St. east and north to its intersection with Hwy. 1088; thence follow Hwy. 1088 southwest to its intersection with Soult St., also the point of beginning.

Precinct 426

Commence at the intersection of Soult Street and Labarre Street, also the point of beginning; thence follow Labarre Street northwest to its intersection with Albert Street; thence follow Albert Street southwest to its intersection with Dupard Street; thence follow Dupard Street northwest to its intersection with Lamarque Street; thence follow Lamarque Street southwest to its intersection with Florida Street (Hwy. 190); thence follow Florida Street (Hwy. 190) southeast to its intersection with Soult Street; thence follow Soult Street northeast to its intersection with Labarre Street, also the point of beginning.

Precinct 427

Commence at the intersection of the Tammany Trace and Sharp Road, also the point of beginning; thence follow Sharp Road east to its intersection with Hwy. 59; thence follow Hwy. 59 southwest to its intersection with Destin Street; thence follow Destin Street northwest to its intersection with the Tammany Trace; thence follow the Tammany Trace northeast to its intersection with Sharp Road, also the point of beginning.

Precinct 428

Commence at the intersection of Viola Street and Hwy 59, also the point of beginning; thence follow Hwy. 59 south and southwest to its intersection with Hwy. 1088; thence follow Hwy. 1088 northeast to its intersection with Spring Blvd.; thence follow Spring Blvd. southeast to its intersection with Sweet Bay Drive; thence follow Sweet Bay Drive southwest to its intersection with Chestnut Oak Drive; thence follow Chestnut Oak Drive south, southeast and northeast to its intersection with Red Maple Drive; thence follow Red Maple Drive south to its intersection with Butternut Lane, thence follow Butternut Lane east to its intersection with Soult Street; thence follow Soult Street north to its intersection with Hwy. 1088; thence follow the continuation of Viola Street north and west to its intersection with Hwy 59, also the point of beginning

Precinct 429

Commence at the intersection of Hwy. 190 and Judge Tanner Boulevard, also the point of beginning; thence follow Judge Tanner Boulevard thence follow Westwood Drive northeast and north to its intersection with Dove Park Road; thence follow Dove Park Road east to its intersection with Buras Ranch Road; thence follow Buras Ranch Road north to its intersection with Little Ponchitalawa Creek; thence follow Little Ponchitalawa Creek west and northwest to its intersection with Ponchitalawa Creek; thence follow Ponchitalawa Creek west, southwest, and west to its intersection with Hwy. 190; thence follow Hwy. 190 south to its intersection with Judge Tanner Boulevard., also the point of beginning.

****Precinct 430 (newly created / split from 411)**

Commence at the intersection of Hwy. 59 and Lotus Road, also the point of beginning; thence follow Lotus Road and Lotus Road extension east to its intersection with Bay Street; thence follow Bay Street south to its intersection with Viola Street; thence follow Viola Street east and south to its continuation and start of Soult Street; thence follow Soult Street south to its intersection with Butternut Lane; thence follow Butternut Lane west to its intersection with Red Maple Drive; thence follow Red Maple Drive north to its intersection with Chestnut Oak Drive; thence follow Chestnut Oak Drive west and northwest to its intersection with Sweet Bay Drive; thence follow Sweet Bay Drive northeast to its intersection with Spring Blvd.; thence follow Spring Blvd. northwest to its intersection with Hwy. 1088; thence follow Hwy. 1088 southwest to its intersection with Hwy. 59; thence follow Hwy 59 northeast to its intersection with Lotus Rd., also the point of beginning.

Precinct 501

Commence at the intersection of the St. Tammany Parish/Washington Parish boundary line and the Bogue Chitto River, also the point of beginning; thence follow the Bogue Chitto River southeast, east, northeast, south, southeast, east, southeast, east, northeast, southeast, east, southeast, east, south, and southwest to its intersection with Dobson Bayou; thence follow Dobson Bayou east, northeast, north, east, and southeast to its intersection with Hell's Gate Bayou; thence follow Hell's Gate Bayou east, northeast, and east to its intersection with the Pearl River, which is also the St. Tammany Parish boundary line at the Louisiana/Mississippi border; thence follow the Pearl River north, east, northeast, north, west, northwest, north, northeast, northwest, west, southwest, north, west, north, northeast, southeast, and north to its intersection with the St. Tammany Parish/Washington Parish boundary line; thence follow the St. Tammany Parish/Washington Parish boundary line west to its intersection with the Bogue Chitto River, also the point of beginning.

Precinct 502

Commence at the intersection of the St. Tammany Parish/Washington Parish boundary line and the Bogue Chitto River, also the point of beginning; thence follow the Bogue Chitto River southeast, east, northeast, south, southeast, east, southeast, east, northeast, and southeast to its intersection with Hwy. 21 (Military Road); thence follow Hwy. 21 (Military Road) south, southwest, west, and southwest to its intersection with Hwy. 1083 (Ben Williams Road); thence follow Hwy. 1083 (Ben Williams Road) north, northwest, north, northeast, north, northwest, and north to its intersection with Hwy. 40 (Bush-Folsom Road); thence follow Hwy. 40 (Bush-Folsom Road) northwest, west, and northwest to its intersection with Isabel Swamp Road; thence follow Isabel Swamp Road continuing northwest, then northeast, north, northwest, and northeast to its intersection with the St. Tammany Parish/Washington Parish boundary line; thence follow the St. Tammany Parish/Washington Parish boundary line northwest and west to its intersection with the Bogue Chitto River, also the point of beginning.

Precinct 503

Commence at the intersection of the Bogue Chitto River and Hwy. 21 (Military Road), also the point of beginning; thence follow Hwy. 21 (Military Road) south, southwest, west, and southwest to its intersection with Money Hill Pkwy.; thence follow Money Hill Pkwy. east, southeast, south, southwest, southeast, south, southeast, west, and southwest to its intersection with Hwy. 435 (Talisheek Hwy.); thence follow Hwy. 435 (Talisheek Hwy.) northeast, east, and northeast to its intersection with an unnamed gravel road; thence follow the unnamed gravel road north, northwest, northeast, and northwest to its intersection with Talisheek Creek; thence follow Talisheek Creek north and northeast to its intersection with the Gulf Mobile and Ohio Railroad; thence follow the Gulf Mobile and Ohio Railroad southeast to its intersection with LeBlanc Road; thence follow LeBlanc Road east to its intersection with Vernon Talley Road; thence follow Vernon Talley Road northeast and east to its intersection with Hwy. 41 (Bogalusa Hwy.); thence follow Hwy. 41 (Bogalusa Hwy.) northeast and north to its intersection with Hickory Fields Road; thence follow Hickory Fields Road east, south, southwest, southeast, east, and southeast to its intersection with a boat launch leading into the Pearl River Canal; thence follow the boat launch east to its intersection with the Pearl River Canal; thence follow the Pearl River Canal southeast, south, and southeast to its intersection with a gas pipeline southeast of Meyers Road; thence follow the gas pipeline northeast to its intersection with the West Pearl River; thence follow the West Pearl River northwest, northeast, northwest, west, north, northwest, north, west, northwest, and north to its intersection with Wilson Slough; thence follow Wilson Slough northeast, east, southeast, and east to its intersection with the Pearl River which is also the St. Tammany Parish boundary line at the Louisiana/Mississippi border; thence follow the Pearl River northeast, northwest, southeast, north, northwest, west, northwest, east, northwest, north, northwest, south, west, and north to its intersection with Hell's Gate Bayou; thence follow Hell's Gate Bayou west, southwest, and west to its intersection with Dobson Bayou; thence follow Dobson Bayou northwest, west, south, southwest, and west to its intersection with the Bogue Chitto River; thence follow the Bogue Chitto River northeast, north, west, northwest, west, and northwest to its intersection with Hwy. 21 (Military Road), also the point of beginning.

Precinct 504

Commence at the intersection of Hwy. 1083 and Lowe Davis Rd., also the point of beginning; thence follow Hwy. 1038 north to its intersection with LA Hwy 21; thence follow LA Hwy 21 northeast to its intersection with Money Hill Pkwy.; thence follow Money Hill Pkwy. south to its intersection with Hwy. 435 (Talisheek Hwy.); thence follow Hwy. 435 (Talisheek Hwy.) south and southwest to its intersection with McIntyre Rd.; thence follow McIntyre Rd. north to its intersection with a branch of the Abita River, thence follow said branch east and northeast and west, northwest to its intersection with Hwy. 1083 and Lowe Davis Rd., also the point of beginning.

Precinct 505

Commence at the intersection of Hwy. 1082 (Old Military Road) and Hwy. 21 (Military Road), also the point of beginning; thence follow Hwy. 21 (Military Road) northeast to its intersection with Hwy. 59; thence follow Hwy. 59 south to its intersection with Lowe Davis Road; thence follow Lowe Davis Road northeast and east to its intersection with Hwy. 1083; thence follow Hwy. 1083 north and northwest to its intersection with Hwy. 21 (Military Rd.); thence follow Hwy. 21 (Military Rd.) northeast to its intersection with the northern part of Hwy. 1083; thence follow Hwy. 1083 north, northeast and northwest to its intersection with Hwy. 40 (Bush-Folsom Road); thence follow Hwy. 40 (Bush-Folsom Road) northwest and west to its intersection with Hwy. 1082 (Old Military Road); thence follow Hwy. 1082 (Old Military Road) south, southwest, and south to its intersection with Hwy. 21 (Military Road), also the point of beginning.

Precinct 601

Commence at the intersection of Hwy. 435 and Keen Road, also the point of beginning; thence follow Keen Road southeast to its intersection with Abita Creek; thence follow Abita Creek southwest to its intersection with the Abita River; thence follow the Abita River northeast and southeast to its intersection with an unnamed road north of Burvant Street; thence follow the unnamed road southwest and south to its intersection with Burvant Street; thence follow Burvant Street northeast and east to its intersection with Polaris Street; thence follow Polaris Street south and east to its intersection with Landry Lane; thence follow Landry Lane south, east, and south to its intersection with a branch of the Abita River; thence follow the branch of the Abita River west and northwest to its intersection with an unnamed road leading to Hwy. 36; thence follow the unnamed road southwest, southeast, and southwest to its intersection with Hwy. 36; thence follow Hwy. 36 southeast and east to its intersection with Pine Island Road; thence go northeast along Pine Island Road to its intersection with John Bennett Road; thence follow John Bennett Road northwest to its intersection with Peg Keller Road; thence follow Peg Keller Road southeast and northeast approximately 13,200 feet to its intersection with an unnamed gravel road; thence follow the unnamed gravel road northwest, north, northwest, west, and northwest to its intersection with Woodland Road; thence follow Woodland Road south to its intersection with an unnamed road connecting Woodland Road and Mule Bay; thence follow the unnamed road southwest and northwest crossing Mule Bay, then continue northwest, then southwest, north, northwest, east, northeast, north, northwest, and north to its intersection with Hwy. 435; thence follow Hwy. 435 southwest, west, southwest, west, and southwest to its intersection with Keen Road, also the point of beginning.

Precinct 602

Commence at the intersection of Wilson Slough and the Pearl River which is also the St. Tammany Parish boundary line at the Louisiana/Mississippi border, also the point of beginning; thence follow the meanderings of the Pearl River southwest, southeast, northwest, southeast, southwest, southeast, east, northeast, east, south, southwest, northwest, southwest, south, southeast, south, west, southwest, southeast, southwest, south, west, southeast, northeast, southwest, southeast, southwest, south, east, northeast, south, southwest, southeast, west, southwest, and southeast to its intersection with Holmes Bayou; thence follow the meanderings of Holmes Bayou south, west, south, southeast, south, southeast, southwest, southeast, and south to its intersection with the West Pearl River; thence follow the meanderings of the West Pearl River west, northwest, and southwest to its intersection with the Pearl River Canal; thence follow the meanderings of the Pearl River Canal west and northwest to its intersection with a boat launch leading to Lock No. 1 Road; thence follow the boat launch southwest to its intersection with Lock No. 1; thence follow Lock No. 1 Road west, northwest, and southwest to its intersection with Hwy. 41; thence follow Hwy. 41 northwest to its intersection with Fire tower Road; thence follow Fire tower Road southwest and northwest to its intersection with Peg Keller Road; thence follow Peg Keller Road west and southwest to its intersection with an unnamed gravel road; thence follow the unnamed gravel road north, northwest, north, northwest, west, and northwest to its intersection with Woodland Road; thence follow Woodland Road south to its intersection with an unnamed road connecting Woodland Road and Mule Bay; thence follow the unnamed road southwest and northwest crossing Mule Bay, then continue northwest, then southwest, north, northwest, east, northeast, north, northwest, and north to its intersection with Hwy. 435 (Talisheek Hwy.); thence follow Hwy. 435 (Talisheek Hwy.) northeast to its intersection with an unnamed gravel road; thence follow the unnamed gravel road north, northwest, northeast, and northwest to its intersection with Talisheek Creek; thence follow the meanderings of Talisheek Creek north and northeast to its intersection with the Gulf Mobile and Ohio Railroad tracks; thence follow the Gulf Mobile and Ohio Railroad tracks southeast to its intersection with LeBlanc Lane; thence follow LeBlanc Lane southeast and east to its intersection with Vernon Talley Road; thence follow Vernon Talley Road northeast and east to its intersection with Hwy. 41 (Bogalusa Hwy.); thence follow Hwy. 41 (Bogalusa Hwy.) northeast and north to its intersection with Hickory Fields Road; thence follow Hickory Fields Road east, south, southwest, southeast, east, and southeast to its intersection with a boat launch leading into the Pearl River Canal; thence follow the boat launch east to its intersection with the Pearl River Canal; thence follow the meanderings of the Pearl River Canal southeast, south, and southeast to its intersection with a gas pipeline southeast of Meyers Road; thence follow the gas pipeline northeast to its intersection with the West Pearl River; thence follow the meanderings of the West Pearl River northwest, northeast, northwest, west, north, northwest, north, west, northwest, and north to its intersection with Wilson Slough; thence follow Wilson Slough northeast, east, southeast, and east to its intersection with the Pearl River which is also the St. Tammany Parish boundary line at the Louisiana/Mississippi border, also the point of beginning.

Precinct 603

Commence at the intersection of Hwy. 36 and Hwy. 41, also the point of beginning; thence follow Hwy. 41 southeast, south, southwest, and southeast to its intersection with Pine Street Extension; thence follow Pine Street Extension southwest, west, northwest, west, and southwest to its intersection with CC 19 Road; thence follow CC 19 Road northwest to its intersection with an electric power line; thence follow the electric power line continuing northwest and north to its intersection with Hwy. 36; thence follow Hwy. 36 southeast and east to its intersection with Hwy. 41, also the point of beginning.

Precinct 604

Commence at the intersection of I-59 and Old Hwy. 11, also the point of beginning; thence follow Old Hwy. 11 southeast, east, and northeast to its intersection with the Pearl River which is also the St. Tammany Parish boundary line at the Louisiana/Mississippi border; thence follow the Pearl River northwest, northeast, north, northwest, west, northwest, west, and southwest to its intersection with Holmes Bayou; thence follow Holmes Bayou south, west, south, southeast, south, southeast, southwest, southeast, and south to its intersection with the West Pearl River; thence follow the West Pearl River west, northwest, and southwest to its intersection with the Pearl River Canal; thence follow the Pearl River Canal west and northwest to its intersection with a boat launch leading to Lock No. 1 Road; thence follow the boat launch southwest to its intersection with Lock No. 1 Road; thence follow Lock No. 1 Road west, northwest, and southwest to its intersection with Hwy. 41; thence follow Hwy. 41 southeast, southwest, south, southeast, and south to its intersection with Hickory Street; thence follow Hickory Street southeast to its intersection with Gum Creek; thence follow Gum Creek northeast, north, northwest, and east to its intersection with Old Channel; thence follow Old Channel southeast, east, south; southeast, and east to its intersection with I-59; thence follow I-59 northeast to its intersection with Old Hwy. 11, also the point of beginning.

Precinct 605

Commence at the intersection of Fish Hatchery Road and Beaver Ball Road, also the point of beginning; thence follow Beaver Ball Road northeast, north, northwest, north, and northwest to its intersection with Hwy. 1088; thence follow Hwy. 1088 southwest to its intersection with Kipp Road; thence follow Kipp Road north to its intersection with Hwy. 36; thence follow Hwy. 36 southeast to its intersection with an electric power line; thence follow the electric power line south and southeast to its intersection with CC19 Rd.; thence follow CC19 Rd. northwest to its intersection with Dixie Ranch Rd.; thence follow Dixie Ranch Rd. south and southeast to its intersection with an electric power line; thence follow said electric power line west and northwest to its intersection with Bayou Lacombe; thence follow Bayou Lacombe north to its intersection with Krentel Rd.; thence follow Krentel Rd. northwest to its intersection with Fish Hatchery Rd.; thence follow Fish Hatchery Rd. northeast to its intersection with Beaver Ball Road, also the point of beginning.

Precinct 606

Commence at the intersection of Hwy. 36 (Hickory Hwy.) and Hwy. 41 (Bogalusa Hwy.), also the point of beginning; thence follow Hwy. 41 (Bogalusa Hwy.) northwest, north, northeast, and northwest to its intersection with Fire tower Road; thence follow Fire tower Road southwest and northwest to its intersection with Peg Keller Road; thence follow Peg Keller Road west to its intersection with the Gulf Mobile and Ohio Railroad; thence follow the Gulf Mobile and Ohio Railroad southeast to its intersection with Hwy. 36 (Hickory Hwy.); thence follow Hwy. 36 (Hickory Hwy.) east to its intersection with Hwy. 41 (Bogalusa Hwy.), also the point of beginning.

Precinct 609 (Precinct 601 split into Precinct 601 and 609)

Commence at the intersection of Hwy. 36 and Pine Island Road; thence go northeast along Pine Island Road to its intersection with John Bennett Road; thence follow John Bennett Road northwest to its intersection with Peg Keller Road; thence follow Peg Keller Road southeast and northeast to its intersection with the Gulf Mobile and Ohio Railroad; thence follow the Gulf Mobile and Ohio Railroad southeast to its intersection with Hwy. 36; thence follow Hwy. 36 northwest to its intersection with Pine Island Road, also the point of beginning.

Precinct 701

Commence at the intersection of Hwy. 434 and Hwy. 190, also the point of beginning; thence follow Hwy. 190 southwest, west, and northwest to its intersection with North Pontchartrain Drive; thence follow North Pontchartrain Drive north, northeast, east, and southeast to its intersection with Fish Hatchery Road; thence follow Fish Hatchery Road northeast, northwest, north, and northeast to its intersection with Krentel Road; thence follow Krentel Road southeast to its intersection with Bayou Lacombe; thence follow Bayou Lacombe southwest to its intersection with an electric power line; thence follow the electric power line southeast and east to its intersection with Hwy. 434; thence follow Hwy. 434 southwest, south, and southwest to its intersection with Hwy. 190, also the point of beginning.

Precinct 702

Commence at the intersection of Hwy. 190 and Hwy. 434, also the point of beginning; thence follow Hwy. 434 northeast, north, and northeast to its intersection with an electric power line; thence follow the electric power line northeast to Fire tower Road; thence follow Fire tower Road south to its intersection with Cypress Bayou; thence follow Cypress Bayou southwest and south to its intersection with Berry Todd Road; thence follow Berry Todd Road west, southwest, west, and southwest to its intersection with Mill Road; thence follow Mill Road south, west, southwest, northwest, and south to its intersection with Hwy. 190; thence follow Hwy. 190 northwest, west, and southwest to its intersection with Hwy. 434, also the point of beginning.

Precinct 703

Commence at the intersection of Hwy. 190 and Bayou Lacombe, also the point of beginning; thence follow Bayou Lacombe southeast, east, southeast, southwest, southeast, southwest, south, and southeast to its intersection where Bayou Lacombe flows into Lake Pontchartrain; thence follow a straight line extension south to its intersection with the St. Tammany Parish/Orleans Parish boundary line in Lake Pontchartrain; thence follow the St. Tammany Parish/Orleans Parish boundary line southeast, east, and northeast to its intersection with a straight line extension leading to Cane Bayou; thence follow the straight line extension north to its intersection with Cane Bayou; thence follow Cane Bayou continuing north, then northeast to its intersection with Hwy. 190; thence follow Hwy. 190 southeast and northeast to its intersection with Bayou Lacombe, also the point of beginning.

Precinct 704

Commence at the intersection of Hwy. 190 and Bayou Lacombe, also the point of beginning; thence follow Bayou Lacombe southeast, east, southeast, southwest, southeast, southwest, south, and southeast to its intersection with the shore line of Lake Pontchartrain; thence follow the shore line of Lake Pontchartrain east and southeast to its intersection with a pipeline leading into Lake Pontchartrain; thence follow the pipeline northeast to its intersection with Bayou Paquet Road; thence follow Bayou Paquet Road east and southeast to its intersection with Transmitter Road; thence follow Transmitter Road north to its intersection with Hwy. 190; thence follow Hwy. 190 west, northwest, and southwest to its intersection with Bayou Lacombe, also the point of beginning.

Precinct 705

Commence at the intersection of Transmitter Road and the Tammany Trace, also the point of beginning; thence follow the Tammany Trace east to its intersection with Park Avenue; thence follow Park Avenue south and southwest to its intersection with Bayou Paquet; thence follow Bayou Paquet southeast and south to its intersection with Bayou Paquet Road; thence follow Bayou Paquet Road southeast to its intersection with Thompson Road; thence follow Thompson Road southwest and southeast to its intersection with Bayou Liberty; thence follow Bayou Liberty southwest, west, southwest, and southeast to its intersection with Bayou Bonfouca; thence follow Bayou Bonfouca southwest to its intersection with where Bayou Bonfouca flows into Lake Pontchartrain; thence follow a straight line extension south to its intersection with the St. Tammany Parish/Orleans Parish boundary line in Lake Pontchartrain; thence follow the St. Tammany Parish/Orleans Parish boundary line west and southwest to its intersection with a straight line extension leading to Bayou Lacombe; thence follow the straight line extension north to its intersection where Bayou Lacombe meets the shoreline of Lake Pontchartrain; thence follow the shoreline of Lake Pontchartrain east and southeast to its intersection with a pipeline leading into Lake Pontchartrain; thence follow the pipeline northeast to its intersection with Bayou Paquet Road; thence follow Bayou Paquet Road east and southeast to its intersection with Transmitter Road; thence follow Transmitter Road north to its intersection with the Tammany Trace, also the point of beginning.

Precinct 706

Commence at the intersection of Berry Todd Road and Cypress Bayou, also the point of beginning; thence follow Cypress Bayou south, west, and southwest to its intersection with Shannon Drive; thence follow Shannon Drive east to its intersection with North Tranquility Road; thence follow North Tranquility Road south to its intersection with Hwy. 190; thence follow Hwy. 190 northwest a short distance to its intersection with South Tranquility Road; thence follow South Tranquility Road south to its intersection with the Tammany Trace; thence follow the Tammany Trace west to its intersection with Transmitter Road; thence follow Transmitter Road north to its intersection with Hwy. 190; thence follow Hwy. 190 west and northwest to its intersection with Mill Road; thence follow Mill Road north, southeast, northeast, east, and north to its intersection with Berry Todd Road; thence follow Berry Todd Road northeast, east, northeast, and east to its intersection with Cypress Bayou, also the point of beginning.

Precinct 801

Commence at the intersection of I-59 and Old Hwy. 11, also the point of beginning; thence follow Old Hwy. 11 southeast, east, and northeast to its intersection with the Pearl River which is also the St. Tammany Parish boundary line at the Louisiana/Mississippi border; thence follow the Pearl River southeast, southwest, and southeast to its intersection with English Bayou; thence follow English Bayou southwest, west, and northwest to its intersection with Craddock Slough; thence follow Craddock Slough southwest, south, west, northwest, and south to its intersection with Otter Bayou; thence follow Otter Bayou southwest to its intersection with the West Pearl River; thence follow the West Pearl River southeast, south, and southwest to its intersection with Davis Landing boat launch; thence follow Davis Landing boat launch west and southwest to its intersection with Davis Landing Road; thence follow Davis Landing Road west, south, and west to its intersection with Hwy. 1090 (Military Road); thence follow Hwy. 1090 (Military Road) northwest, northeast, north, northwest, north, northeast, and northwest to its intersection with the I-59 Service Road; thence follow the I-59 Service Road northeast, northwest, north, and northeast to its intersection with Porter's River Road; thence follow Porter's River Road east, northeast, and north to its intersection with a boat launch leading into Porter's River; thence follow Porter's River northeast, northwest, and northeast to its intersection with the West Pearl River; thence follow the West Pearl River northwest to its intersection with I-59; thence follow I-59 northeast to its intersection with Old Hwy. 11, also the point of beginning.

Precinct 802

Commence at the intersection of I-12 and Hwy. 11, also the point of beginning; thence follow Hwy. 11 northeast to its intersection with Haas Road; thence follow Haas Road east to its intersection with Pebblebrook Drive; thence follow Pebblebrook Drive south to its intersection with Hunter's Creek Road; thence follow Hunter's Creek Road west to its intersection with Miller's Creek Lane; thence follow Miller's Creek Lane southwest to its intersection with Kelly Drive; thence follow Kelly Drive west to its intersection with Bluefield Drive; thence follow Bluefield Drive southeast and south to its intersection with Meredith Drive; thence follow Meredith Drive west to its intersection with Defiance Drive; thence follow Defiance Drive south to its intersection with Lenwood Drive; thence follow Lenwood Drive west to its intersection with Whisperwood Blvd.; thence follow Whisperwood Blvd. southwest, south, southeast, and south to its intersection with Brownswitch Road; thence follow Brownswitch Road east to its intersection with Hwy. 1091 (Robert Road); thence follow Hwy. 1091 (Robert Road) southwest to its intersection with I-12; thence follow I-12 northwest and west to its intersection with Hwy. 11, also the point of beginning.

Precinct 803

Commence at the intersection of Haas Road and Hwy. 1091, also the point of beginning; thence follow Hwy. 1091 south and southeast to its intersection with Dean Road; thence follow Dean Road and its extension northeast to its intersection with I-59; thence follow I-59 south and southwest to its intersection with I-12; thence follow I-12 northeast to its intersection with Hwy. 1091; thence follow Hwy. 1091 northeast to its intersection with Brownswitch Road; thence follow Brownswitch Road west to its intersection with Whisperwood Blvd; thence follow Whisperwood Blvd. north, northwest, north, and northeast to its intersection with Lenwood Drive; thence follow Lenwood Drive east to its intersection with Defiance Drive; thence follow Defiance Drive north to its intersection with Meredith Drive; thence follow Meredith Drive east to its intersection with Bluefield Drive; thence follow Bluefield Drive north and northwest to its intersection with Kelly Drive; thence follow Kelly Drive east to its intersection with Millers Creek Lane; thence follow Millers Creek Lane northeast to its intersection with Hunters Creek Road; thence follow Hunters Creek Road east to its intersection with Pebblebrook Drive; thence follow Pebblebrook Drive north to its intersection with Haas Road; thence follow Haas Road east to its intersection with Hwy. 1091, also the point of beginning.

Precinct 804

Commence at the intersection of I-59 and I-10, also the point of beginning; thence follow I-10 southeast, east, and northeast to its intersection with the Pearl River which is also the St. Tammany Parish boundary line at the Louisiana/Mississippi border; thence follow the Pearl River north, northeast, northwest, north, and northwest to its intersection with English Bayou; thence follow English Bayou southwest, west, and northwest to its intersection with Craddock Slough; thence follow Craddock Slough southwest, south, west, northwest, and south to its intersection with Otter Bayou; thence follow Otter Bayou southwest to its intersection with the West Pearl River; thence follow the West Pearl River southeast, south, and southwest to its intersection with Davis Landing boat launch; thence follow Davis Landing boat launch west and southwest to its intersection with Davis Landing Road; thence follow Davis Landing Road west, south, and west to its intersection with Hwy. 1090 (Military Road); thence follow Hwy. 1090 (Military Road) northwest, northeast, north, northwest, north, northeast, and northwest to its intersection with I-59; thence follow I-59 south and southwest to its intersection with I-10, also the point of beginning.

Precinct 805

Commence at the intersection of I-10 and Gause Blvd., also the point of beginning; thence follow Gause Blvd. east and northeast to its intersection with Amber Street; thence follow Amber Street north to its intersection with Lake Village Blvd.; thence follow Lake Village Blvd. east and southeast to its intersection with Cross Gates Blvd.; thence follow Cross Gates Blvd. northeast to its intersection with Hwy. 1090 (North Military Road); thence follow Hwy. 1090 (North Military Road) northwest to its intersection with I-10; thence follow I-10 northwest and southwest to its intersection with Gause Blvd., also the point of beginning.

Precinct 806

Commence at the intersection of Gause Blvd. East (Hwy. 190) and French Branch, also the point of beginning; thence follow the meanderings of French Branch southeast to its intersection with Hwy. 1090 (Military Road); thence follow Hwy. 1090 (Military Road) southwest to its intersection with Rue Esplanade; thence follow Rue Esplanade and its extension northwest to its intersection with Rue Holiday; thence follow Rue Holiday continuing northwest, then west to its intersection with Pearl Acres Road; thence follow Pearl Acres Road north to its intersection with Gause Blvd. East (Hwy. 190); thence follow Gause Blvd. East (Hwy. 190) northeast to its intersection with French Branch, also the point of beginning.

Precinct 807

Commence at the intersection of I-10 and Hwy. 1090 (Military Road), also the point of beginning; thence follow Hwy. 1090 (Military Road) southeast to its intersection with Herwig Bluff Road; thence follow Herwig Bluff Road and its extension east and northeast to a branch leading to the West Pearl River; thence follow the branch southeast to its intersection with the West Pearl River; thence follow the meanderings of the West Pearl River northwest to its intersection with I-10; thence follow I-10 west and northwest to its intersection with Hwy. 1090 (Military Road), also the point of beginning.

Precinct 808

Commence at the intersection of Doubloon Branch and Hwy. 1090 (Military Road), also the point of beginning; thence follow Hwy. 1090 (Military Road) northeast to its intersection with an electric power line; thence follow the electric power line northeast to its intersection with the West Pearl River; thence follow the West Pearl River southeast to its intersection with Doubloon Branch; thence follow Doubloon Branch west, southwest, and northwest to its intersection with Hwy. 1090 (Military Road), also the point of beginning.

Precinct 809

Commence at the intersection of Doubloon Branch and Hwy. 190 East, also the point of beginning; thence follow Hwy. 190 East northwest, west, and northwest to its intersection with Brookter Road; thence follow Brookter Road south and southeast to its intersection with Kingspoint Blvd.; thence follow Kingspoint Blvd. southwest to its intersection with Voters Road; thence follow Voters Road east to its intersection with Brookter Road; thence follow Brookter Road south to its intersection with the levee which encircles New Kingspoint subdivision; thence follow the levee east, south, and west to its intersection with the W-14 Canal via the pumping station; thence follow the W-14 Canal southeast to its intersection with Doubloon Branch; thence follow Doubloon Branch northeast, east, north, northwest, east, northeast, northwest, and northeast to its intersection with Hwy. 190 East, also the point of beginning.

Precinct 810

Commence at the intersection of Doubloon Branch and Hwy. 1090 (Military Road), also the point of beginning; thence follow Hwy. 1090 (Military Road) south to its intersection with Hwy. 190 East; thence follow Hwy. 190 East southeast and east to its intersection with Hwy. 90; thence follow Hwy. 90 northeast and east to its intersection with the Pearl River, which is also the St. Tammany Parish boundary line at the Louisiana/Mississippi border; thence follow the Pearl River north, northwest, north, east, north, northwest, north, northwest, west, north, northeast, and north to its intersection with I-10; thence follow I-10 southwest and west to its intersection with the West Pearl River; thence follow the West Pearl River southeast, south, and southeast to its intersection with Doubloon Branch; thence follow Doubloon Branch west, southwest, and northwest to its intersection with Hwy. 1090 (Military Road), also the point of beginning.

Precinct 811

Commence at the intersection of Hwy. 1090 (Military Road) and Gause Blvd., also the point of beginning; thence follow Gause Blvd. southwest to its intersection with French Branch; thence follow French Branch southeast to its intersection with Hwy. 1090 (Military Road); thence follow Hwy. 1090 (Military Road) north, northeast, and northwest to its intersection with Gause Blvd., also the point of beginning.

Precinct 812

Commence at the intersection of Hwy. 1090 (Military Road) and Gause Blvd., also the point of beginning; thence follow Gause Blvd. southwest to its intersection with Amber Street; thence follow Amber Street north to its intersection with Lake Village Blvd.; thence follow Lake Village Blvd. east and southeast to its intersection with Cross Gates Blvd.; thence follow Cross Gates Blvd. northeast to its intersection with Hwy. 1090 (Military Road); thence follow Hwy. 1090 (Military Road) southeast to its intersection with Gause Blvd., also the point of beginning.

Precinct 813

Commence at the intersection of I-10 and Gause Blvd., also the point of beginning; thence follow Gause Blvd. east and northeast to its intersection with Pearl Acres Road; thence follow Pearl Acres Road south to its intersection with Rue Holiday; thence follow Rue Holiday west to its intersection with North Holiday Drive; thence follow North Holiday Drive southwest and west to its intersection with an electric power line; thence follow the electric power line southeast to its intersection with Hwy. 190 East; thence follow Hwy. 190 East west and northwest becoming Hwy. 190 West; thence follow Hwy. 190 West continuing northwest to its intersection with I-10; thence follow I-10 northeast to its intersection with Gause Blvd., also the point of beginning.

****Precinct 814 (split into 814 & 818)**

Commence at the intersection of Voters Road and W-14 Canal, also the point of beginning; thence follow W-14 Canal southeast to the intersection with the levee which encircles Kingspoint subdivision; thence follow the levee south, west, north and northeast to its intersection with Kingspoint Blvd.; thence follow Kingspoint Blvd. northwest to its intersection with Voters Road; thence follow Voters Road east to its intersection with W-14 Canal, also the point of beginning.

Precinct 815

Commence at the intersection of Dean Road and Hwy. 1091, also the point of beginning; thence follow Hwy. 1091 northwest, north, and northwest to its intersection with the Illinois Central Railroad tracks; thence follow the Illinois Central Railroad tracks northeast to its intersection with Watts Road; thence follow Watts Road southeast to its intersection with Hwy. 1090; thence follow Hwy. 1090 continuing southeast to its intersection with I-59; thence follow I-59 south to its intersection with the extension of Dean Road; thence follow the extension of Dean Road southwest to its intersection with Hwy. 1091, also the point of beginning.

Precinct 816

Commence at the intersection of Hwy. 1090 (Military Road) and Rue Esplanade, also the point of beginning; thence follow Rue Esplanade and its extension northwest to its intersection with Rue Holiday; thence follow Rue Holiday continuing northwest, then west to its intersection with North Holiday Drive; thence follow North Holiday Drive southwest and west to its intersection with an electric power line; thence follow the electric power line southeast to its intersection with Hwy. 190 Business (Shortcut Hwy.); thence follow Hwy. 190 Business (Shortcut Hwy.) east and southeast to its intersection with Hwy. 1090 (Military Road); thence follow Hwy. 1090 (Military Road) north and northeast to its intersection with Rue Esplanade, also the point of beginning.

Precinct 817

Commence at the intersection of Hwy. 1090 (Military Road) and Herwig Bluff Road, also the point of beginning; thence follow Herwig Bluff Road and its extension east and northeast to a branch leading to the West Pearl River; thence follow the branch southeast to its intersection with the West Pearl River; thence follow the meanderings of the West Pearl River southeast and south to its intersection with an electric power line; thence follow the electric power line southwest to its intersection with Hwy. 1090 (Military Road); thence follow Hwy. 1090 (Military Road) north and northwest to its intersection with Herwig Bluff Road, also the point of beginning.

****Precinct 818 (newly created / split from 814**

Commence at the intersection of Voters Road and Brookter Road, also the point of beginning; thence follow Brookter Road south to its intersection with the levee which encircles New Kingspoint subdivision; thence follow the levee east, south, and west to its intersection with the W-14 Canal; thence follow the W-14 Canal northwest to its intersection with Voters Road; thence follow Voters Road east to its intersection with Brookter Street, also the point of beginning.

Precinct 901

Commence at the intersection of Hwy. 190 and the Tammany Trace, also the point of beginning; thence follow the Tammany Trace east to its intersection with Camp Villere Road; thence follow Camp Villere Road north to its intersection with I-12; thence follow I-12 northwest to its intersection with Bayou Liberty; thence follow Bayou Liberty north and northwest to its intersection with the west branch of Bayou Liberty; thence follow the west branch of Bayou Liberty west, northwest, north, and northwest to its intersection with CC19 Road; thence follow CC19 Road northwest and west to its intersection with Dixie Ranch Road; thence follow Dixie Ranch Road south, southeast, and south to its intersection with Cypress Bayou; thence follow Cypress Bayou west, southwest, south, west, and southwest to its intersection with Shannon Drive; thence follow Shannon Drive east to its intersection with North Tranquility Road; thence follow North Tranquility Road south to its intersection with Hwy. 190; thence follow Hwy. 190 northwest a short distance to its intersection with South Tranquility Road; thence follow South Tranquility Road south to its intersection with the Tammany Trace; thence follow the Tammany Trace east to its intersection with Thompson Road; thence follow Thompson Road northeast to its intersection with Hwy. 190; thence follow Hwy. 190 southeast, east, northeast, and southeast to its intersection with the Tammany Trace, also the point of beginning.

Precinct 902

Commence at the intersection of Camp Villere Road and I-12, also the point of beginning; thence follow I-12 east to its intersection with a drainage canal which flows into Bayou Vincent; thence follow the drainage canal southeast to its intersection with Bayou Vincent; thence follow Bayou Vincent northeast, northwest, north, and northeast to its intersection with the abandoned Illinois Central Railroad; thence follow the abandoned Illinois Central Railroad northwest to its intersection with Browns Village Road; thence follow Browns Village Road east to its intersection with Bayou Vincent; thence follow Bayou Vincent northeast, north, northeast, northwest, north, northeast, north, northwest, northeast, and north to its intersection with Receiving Station Road; thence follow Receiving Station Road west, northwest, west, and northwest to its intersection with CC 33 Road; thence follow CC33 Road southwest to its intersection with CC19 Road; thence follow CC19 Road southeast and south to its intersection with an unnamed gravel road north of Camp Villere; thence follow the unnamed gravel road west to its intersection with Camp Villere Road; thence follow Camp Villere Road southeast, southwest, and south to its intersection with I-12, also the point of beginning.

Precinct 903

Commence at the intersection of Receiving Station Road and CC33 Road, also the point of beginning; thence follow CC33 Road northeast and east to its intersection with Pine Street Extension; thence follow Pine Street Extension continuing east, then southeast, east, and northeast to its intersection with Watts Road; thence follow Watts Road southeast to its intersection with Gum Bayou; thence follow Gum Bayou south, southwest, and southeast to its intersection with Son Moore Road; thence follow Son Moore Road west, southeast, and east to its intersection with Gum Bayou; thence follow Gum Bayou southwest and southeast to its intersection with Hwy. 11; thence follow Hwy. 11 southwest to its intersection with 5th Avenue; thence follow 5th Avenue northwest to its intersection with 8th Street; thence follow 8th Street northeast to its intersection with Pearl River Street; thence follow Pearl River Street west to its intersection with 12th Street; thence follow 12th Street southwest to its intersection with 4th Avenue; thence follow 4th Avenue northwest to its intersection with 15th Street; thence follow 15th Street northeast and northwest to its intersection with Pearl River Street; thence follow Pearl River Street west to its intersection with 17th Street; thence follow 17th Street southwest to its intersection with 3rd Avenue; thence follow 3rd Avenue northwest and west to its intersection with Receiving Station Road; thence follow Receiving Station Road northwest, west, and northwest to its intersection with CC 33 Road, also the point of beginning.

Precinct 904

Commence at the intersection of Bayou Liberty and Hwy. 190 (Gause Blvd. West), also the point of beginning; thence follow Hwy. 190 (Gause Blvd. West) east and southeast to its intersection with Carroll Road; thence follow Carroll Road south and southwest to its intersection with Liberty Drive; thence follow Liberty Drive west to its intersection with East Avenue; thence follow East Avenue south to its intersection with Garden Drive; thence follow Garden Drive and its extension northwest to its intersection with the W-12 L1 Canal; thence follow the W-12 L1 Canal southwest to its intersection with Bayou Liberty; thence follow the meanderings of Bayou Liberty northwest to its intersection with Hwy. 190 (Gause Blvd. West), also the point of beginning.

Precinct 905

Commence at the intersection of the Tammany Trace and Hwy. 433 (Thompson Road), also the point of beginning; thence follow Hwy. 433 (Thompson Road) southwest to its intersection with a Drainage Canal which encircles Ozone Woods subdivision; thence follow the meanderings of the Drainage Canal northwest and northeast encircling Ozone Woods subdivision to its intersection with the Tammany Trace; thence follow the Tammany Trace east to its intersection with Hwy. 433 (Thompson Road), also the point of beginning.

Precinct 906

Commence at the intersection of Thompson Road and Hwy. 190, also the point of beginning; thence follow Hwy. 190 east to its intersection with Bayou Liberty; thence follow Bayou Liberty south, southeast, south, southeast, and south to its intersection with Jefferson Avenue; thence follow Jefferson Avenue northeast and southeast to its intersection with Bayou Liberty Road; thence follow Bayou Liberty Road southwest to its intersection with Napoleon Avenue; thence follow Napoleon Avenue southeast to its intersection with Benjamin Road; thence follow Benjamin Road southwest and southeast to its intersection with Laurent Road; thence follow Laurent Road southwest, northwest, and southwest to its intersection with Nunez Road; thence follow Nunez Road north to its intersection with Bayou Liberty Road; thence follow Bayou Liberty Road west to its intersection with Thompson Road; thence follow Thompson Road northwest and northeast to its intersection with Hwy. 190, also the point of beginning.

Precinct 907

Commence at the intersection of Carroll Road and Bayou Liberty Road, also the point of beginning; thence follow Bayou Liberty Road southwest to its intersection with Jefferson Avenue; thence follow Jefferson Avenue northwest and southwest to its intersection with Bayou Liberty; thence follow Bayou Liberty north and northwest to its intersection with the W-12, L-1 Canal; thence follow the W-12, L-1 Canal northeast to its intersection with Garden Drive; thence follow Garden Drive east and southeast to its intersection with East Street; thence follow East Street northeast to its intersection with Liberty Drive; thence follow Liberty Drive east to its intersection with Carroll Road; thence follow Carroll Road southeast to its intersection with Bayou Liberty Road, also the point of beginning.

****Precinct 909 (split into 909 & 922)**

Commence at the intersection of the St. Tammany Parish/Orleans Parish boundary line in Lake Pontchartrain and I-10; thence follow I-10 northeast to its intersection with the No. 6 canal; thence follow the No. 6 canal southeast, northeast, and southeast to its intersection with Salt Bayou; thence follow Salt Bayou south and southwest to the St. Tammany Parish/Orleans Parish boundary line; thence follow the St. Tammany Parish/Orleans Parish boundary line into Lake Pontchartrain to its intersection with I-10, also the point of beginning.

Precinct 910

Commence at the intersection of Moonraker Drive and Eden Isles Blvd., also the point of beginning; thence follow Eden Isles Blvd. southeast to its intersection with Howze Beach Road; thence follow Howze Beach Road southwest to its intersection with an unnamed stream; thence follow the unnamed stream southeast to its intersection with I-10; thence follow I-10 southwest to its intersection with the shoreline of Lake Pontchartrain; thence follow the shoreline of Lake Pontchartrain northwest to its intersection with the mouth of Grand Lagoon; thence follow Grand Lagoon northeast to its intersection with the Diversion Canal; thence follow the Diversion Canal northwest, northeast, and northwest to its intersection with the bridge on Moonraker Drive; thence follow Moonraker Drive northeast to its intersection with Eden Isles Blvd., also the point of beginning.

Precinct 911

Commence at the intersection of Hwy. 11 and the St. Tammany Parish/Orleans Parish boundary line in Lake Pontchartrain, also the point of beginning; thence follow the St. Tammany Parish/Orleans Parish boundary line east and southeast to its intersection with I-10; thence follow I-10 northeast to its intersection with the shoreline of Lake Pontchartrain; thence follow the shoreline of Lake Pontchartrain northwest to its intersection with the mouth of Grand Lagoon; thence follow Grand Lagoon northeast to its intersection with the Diversion Canal; thence follow the Diversion Canal northwest, northeast, and northwest to its intersection with the bridge on Moonraker Drive; thence follow Moonraker Drive northeast to its intersection with Eden Isles Blvd.; thence follow Eden Isles Blvd. northwest to its intersection with Hwy. 11; thence follow Hwy. 11 southwest to its intersection with the St. Tammany Parish/Orleans Parish boundary line in Lake Pontchartrain, also the point of beginning.

Precinct 912

Commence at the intersection of Bayou Bonfouca and Bayou Liberty Road, also the point of beginning; thence follow Bayou Liberty Road northwest, west, and southwest to its intersection with Napoleon Avenue; thence follow Napoleon Avenue southeast to its intersection with Benjamin Road; thence follow Benjamin Road southwest and southeast to its intersection with Laurent Road; thence follow Laurent Road southwest, northwest, and southwest to its intersection with Baldwin Drive; thence follow Baldwin Drive southeast to its intersection with Ridgewood Drive; thence follow Ridgewood Drive southwest to its intersection with Dunbar Drive; thence follow Dunbar Drive southeast to its intersection with a gravel driveway into the Baldwin property; thence follow the gravel driveway continuing southeast, then east, southeast, and south to its intersection with a cleared path leading to a boat launch on the property leading into Bayou Bonfouca; thence follow the cleared path southeast and southwest to its intersection with a boat launch leading into Bayou Bonfouca; thence follow the boat launch south to its intersection with Bayou Bonfouca; thence follow Bayou Bonfouca east, northeast, north, northeast, southeast, and northeast to its intersection with Bayou Liberty Road, also the point of beginning.

Precinct 913

Commence at the intersection of Journey Road and the west branch of Bayou Liberty, also the point of beginning; thence follow the west branch of Bayou Liberty southeast and east to its intersection with the east branch of Bayou Liberty south of Belair subdivision; thence follow the east branch of Bayou Liberty north, northeast, east, northeast, and north to its intersection with Journey Road; thence follow Journey Road northwest and west to its intersection with Bayou Liberty, also the point of beginning.

Precinct 914

Commence at the intersection of Browns Village Road and the Hwy. 11, also the point of beginning; thence follow Hwy. 11 northeast to its intersection with Haas Road; thence follow Haas Road east to its intersection with Hwy. 1091 (Robert Road); thence follow Hwy. 1091 (Robert Road) northwest, north, and northwest to its intersection with the Illinois Central Railroad; thence follow the Illinois Central Railroad northeast to its intersection with Watts Road; thence follow Watts Road northwest to its intersection with Gum Bayou; thence follow Gum Bayou south, southwest, and southeast to its intersection with Son Moore Road; thence follow Son Moore Road west, southeast, and east to its intersection with Gum Bayou; thence follow Gum Bayou southwest and southeast to its intersection with Hwy. 11; thence follow Hwy. 11 southwest to its intersection with 5th Avenue; thence follow 5th Avenue northwest to its intersection with 8th Street; thence follow 8th Street northeast to its intersection with Pearl River Street; thence follow Pearl River Street west to its intersection with 12th Street; thence follow 12th Street southwest to its intersection with 4th Avenue; thence follow 4th Avenue northwest to its intersection with 15th Street; thence follow 15th Street northeast and northwest to its intersection with Pearl River Street; thence follow Pearl River Street west to its intersection with 17th Street; thence follow 17th Street southwest to its intersection with 3rd Avenue; thence follow 3rd Avenue northwest and west to its intersection with Receiving Station Road; thence follow Receiving Station Road northwest and west to its intersection with Bayou Vincent; thence follow Bayou Vincent south, southwest, southeast, southwest, south, and southwest to its intersection with Browns Village Road; thence follow Browns Village Road east to its intersection with Hwy. 11, also the point of beginning.

Precinct 915

Commence at the intersection of I-12 and Bayou Liberty, also the point of beginning; thence follow Bayou Liberty northwest to its intersection with the east branch of Bayou Liberty south of Belair subdivision; thence follow the east branch of Bayou Liberty north, northeast, east, northeast, and north to its intersection with Journey Road; thence follow Journey Road northwest, west, and northwest to its intersection with the west branch of Bayou Liberty; thence follow the west branch of Bayou Liberty northwest, north, and northwest to its intersection with CC19 Road; thence follow CC19 Road southeast and south to its intersection with an unnamed gravel road north of Camp Villere; thence follow the unnamed gravel road west to its intersection with Camp Villere Road; thence follow Camp Villere Road southeast, southwest, and south to its intersection with I-12; thence follow I-12 west and northwest to its intersection with Bayou Liberty, also the point of beginning.

Precinct 916

Commence at the intersection of the Tammany Trace and Hwy. 190 (Gause Blvd. West), also the point of beginning; thence follow Hwy. 190 (Gause Blvd. West) southeast to its intersection with North Harrison Road; thence follow North Harrison Road northwest to its intersection with Lagrange Road; thence follow Lagrange Road northeast to its intersection with a drainage canal which flows into Bayou Vincent; thence follow the meanderings of the Bayou Vincent Drainage Canal northwest, north, and northwest to its intersection with I-12; thence follow I-12 west to its intersection with the extension of Camp Villere Road; thence follow the extension of Camp Villere Road south to its intersection with the Tammany Trace; thence follow the Tammany Trace west to its intersection with Hwy. 190 (Gause Blvd. West); also the point of beginning.

Precinct 917

Commence at the intersection of Hwy. 433 (Thompson Road) and Bayou Paquet Road, also the point of beginning; thence follow Bayou Paquet Road northwest to its intersection with Bayou Paquet; thence follow the meanderings of Bayou Paquet in a general north and northwest direction to its intersection with Park Avenue; thence follow Park Avenue northeast and north to its intersection with the Tammany Trace; thence follow the Tammany Trace east to its intersection with a Drainage Canal which encircles Ozone Woods subdivision; thence follow the meanderings of the Drainage Canal southwest and southeast encircling Ozone Woods subdivision to its intersection with Hwy. 433 (Thompson Road); thence follow Hwy. 433 (Thompson Road) southwest to its intersection with Bayou Paquet Road, also the point of beginning.

Precinct 918

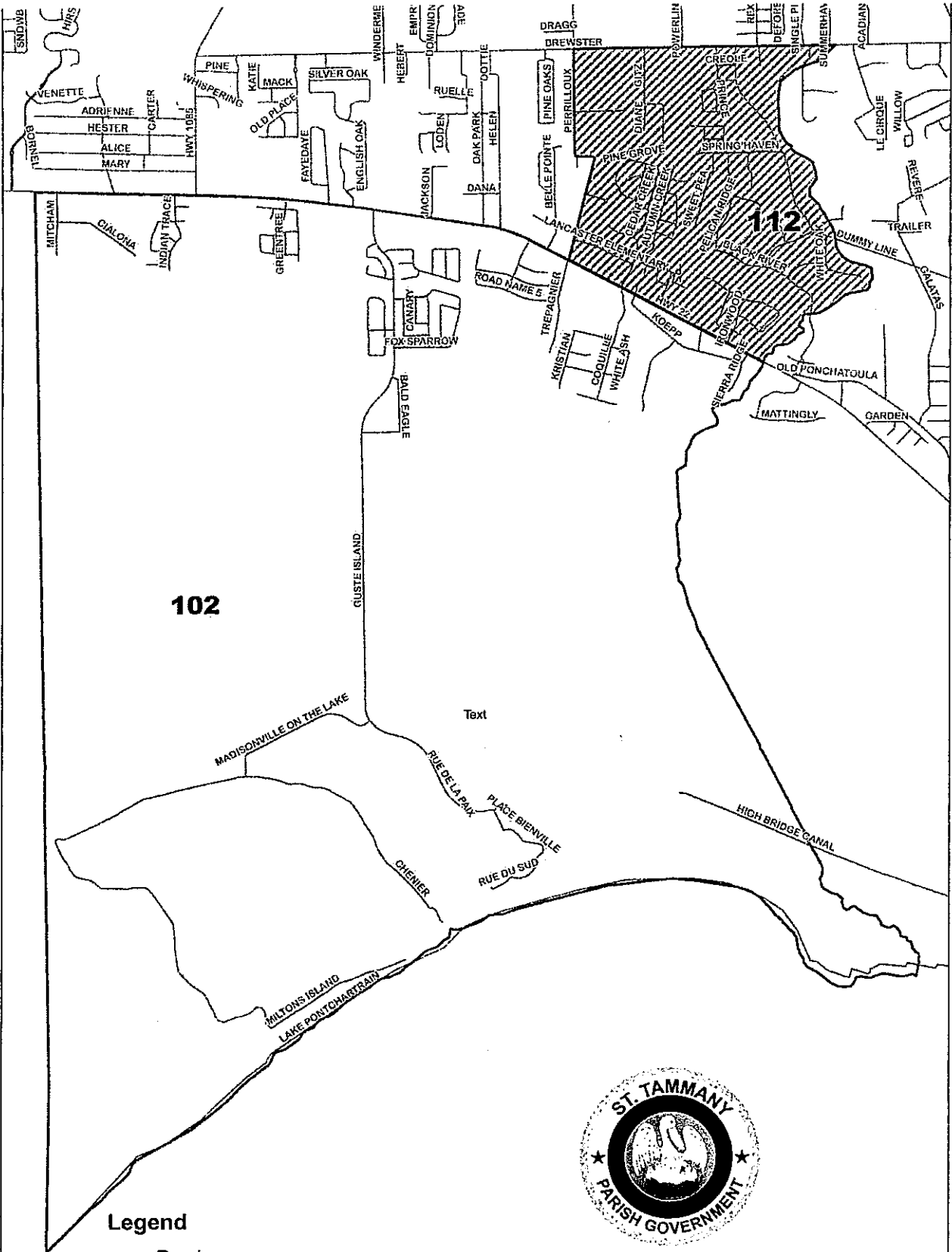
Commence at the intersection of Hwy. 190 Business (Shortcut Hwy.) and Doubloon Branch; thence follow the meanderings of Doubloon Branch south, southeast, southwest, west, northwest, south, southeast, west, and southwest to its intersection with the W-14 canal; thence follow the W-14 canal southeast, southwest and south to its intersection with Salt bayou, thence follow Salt bayou west and southwest to its intersection with the St. Tammany Parish/Orleans Parish boundary line in the Rigolets; thence follow the St. Tammany Parish/Orleans Parish boundary line southeast, east, northeast, east, southeast, northeast and southeast to its intersection with the St. Tammany Parish/St. Bernard Parish boundary line; thence follow the St. Tammany Parish/St. Bernard Parish boundary line continuing southeast, then east and northeast through Lake Borgne to its intersection with the Pearl River, which is also the St. Tammany Parish boundary line at the Louisiana/Mississippi border; thence follow the meanderings of the Pearl River northwest, west, southwest, west, northwest, and north to its intersection with Hwy. 90; thence follow Hwy. 90 west and southwest to its intersection Hwy. 190 Business (Shortcut Hwy.); thence follow Hwy 190 Business (Shortcut Hwy.) west and northwest to its intersection with Doubloon Branch, also the point of beginning.

Precinct 921

Commence at the intersection Hwy. 11 (Pontchartrain Drive) and Eden Isles Blvd., also the point of beginning; thence follow Eden Isles Blvd. southeast to its intersection with Oak Harbor Blvd; thence follow Oak Harbor Blvd. east, northeast, west, southwest, north, and west to its intersection with Hwy. 11 (Pontchartrain Drive); thence follow Hwy. 11 (Pontchartrain Drive) southwest to its intersection with Eden Isles Blvd., also the point of beginning.

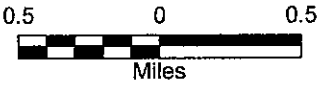
****Precinct 922 (newly created / split from 909)**

Commence at the intersection of I-10 and the No. 6 canal; thence follow the No. 6 canal southeast, northeast, and southeast to its intersection with Salt Bayou; thence follow Salt Bayou south and southwest to the St. Tammany Parish/Orleans Parish boundary line; thence follow the St. Tammany Parish/Orleans Parish boundary line to an extension of the W-14 canal; thence follow the W-14 canal north, northeast and northwest to its intersection with the levee which encircles the New Kingspoint Subdivision; thence follow the levee south, west, north, and northeast to its intersection with Kingspoint Blvd.; thence follow Kingspoint Blvd. north and northeast to its intersection with Winddrift Drive; thence follow Winddrift Drive and its extension west to its intersection with I-10; thence follow I-10 southwest to its intersection with the No. 6 canal, also the point of beginning.



Legend

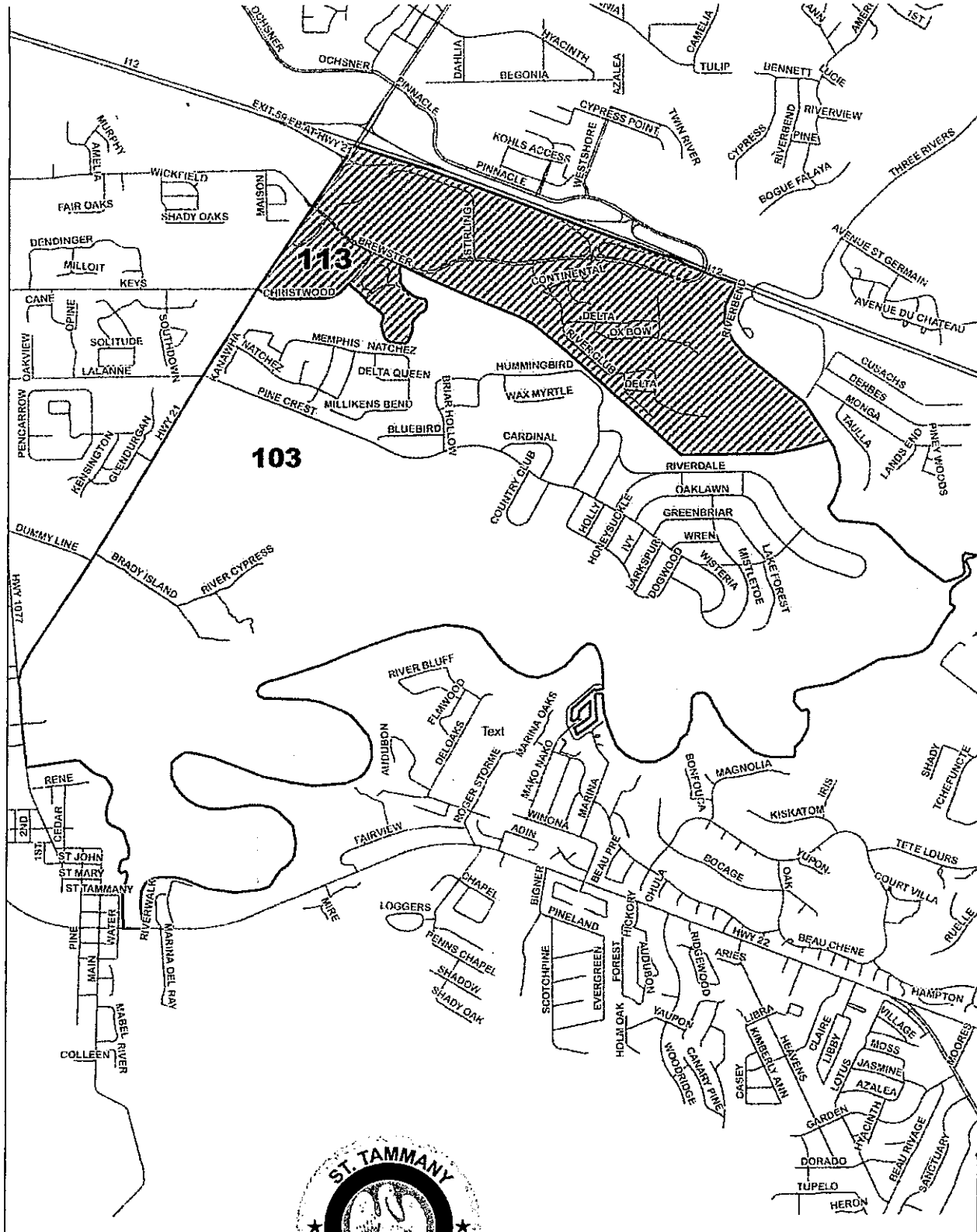
- Roads
- Precinct 102
- ▨ Precinct 112



**Precinct Division 102
Into 102 and 112**

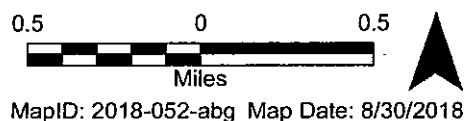
This map was produced by the GIS Section of St. Tammany Parish Department of Technology. Note: This map is for planning purposes only. It is not a legally recorded plan, survey, official tax map or engineering schematic, and it is not intended to be used as such. Map layers were created from different sources at different scales, and the actual or relative geographic position of any feature is only as accurate as the source information. Copyright (c) 2018. St. Tammany Parish, Louisiana. All rights reserved.

MapID: 2018-051-abg Map Date: 8/30/2018



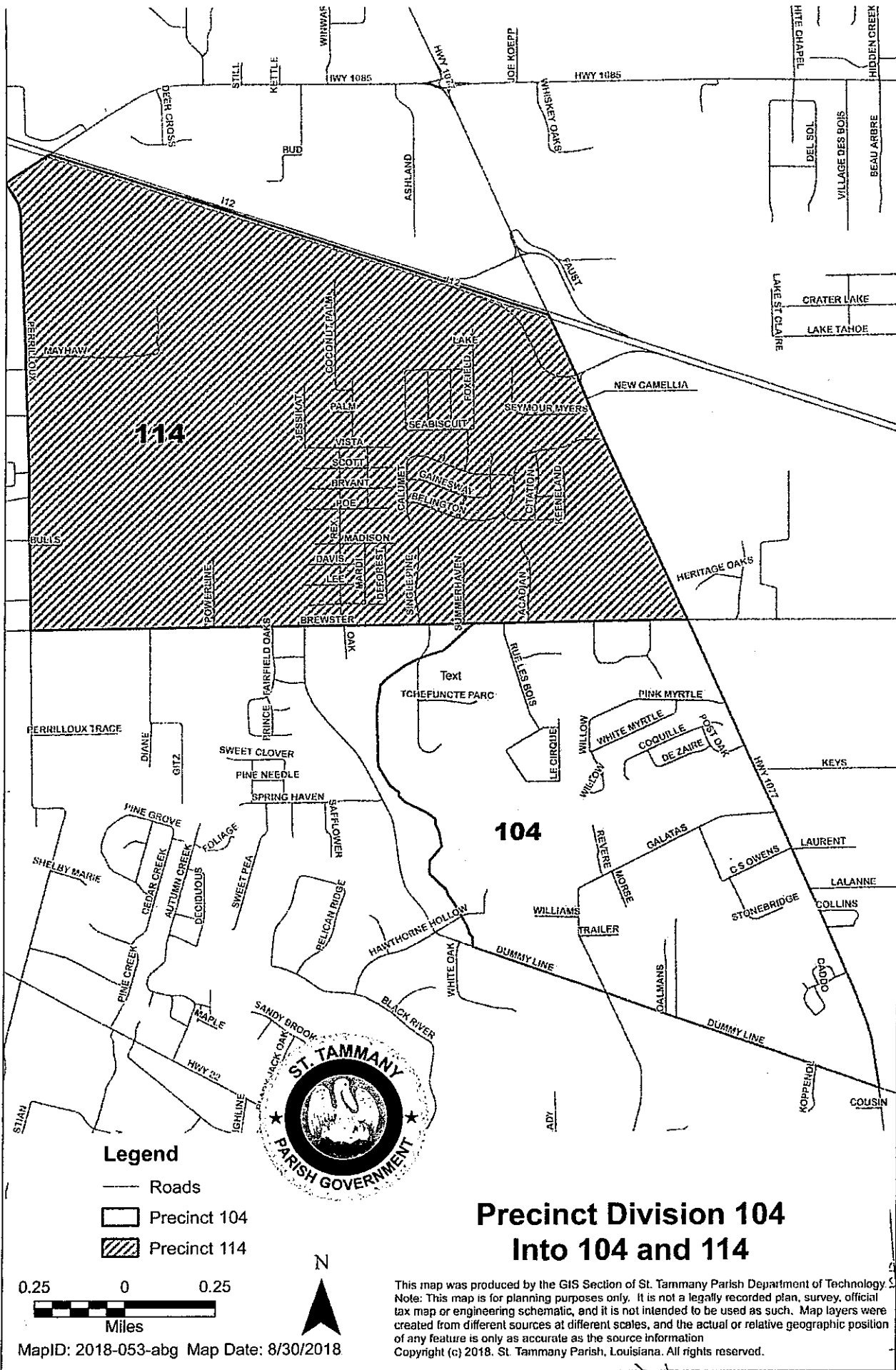
- Legend**
- Roads
 - ▭ Precinct 103
 - ▨ Precinct 113

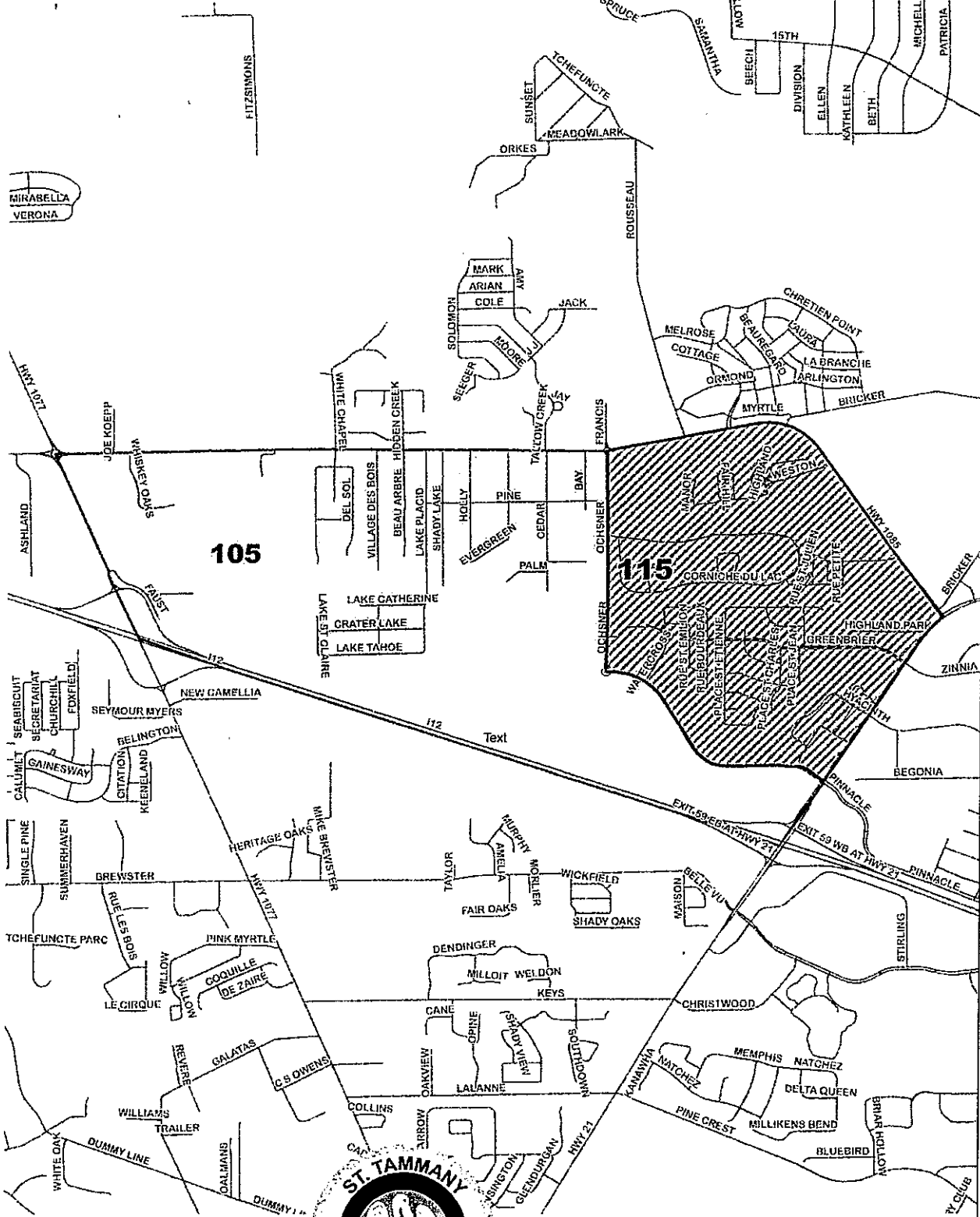
Precinct Division 103 Into 103 and 113



MapID: 2018-052-abg Map Date: 8/30/2018

This map was produced by the GIS Section of St. Tammany Parish Department of Technology. Note: This map is for planning purposes only. It is not a legally recorded plan, survey, official tax map or engineering schematic, and it is not intended to be used as such. Map layers were created from different sources at different scales, and the actual or relative geographic position of any feature is only as accurate as the source information. Copyright (c) 2018. St. Tammany Parish, Louisiana. All rights reserved.





Legend

- Roads
- Precinct 105
- ▨ Precinct 115

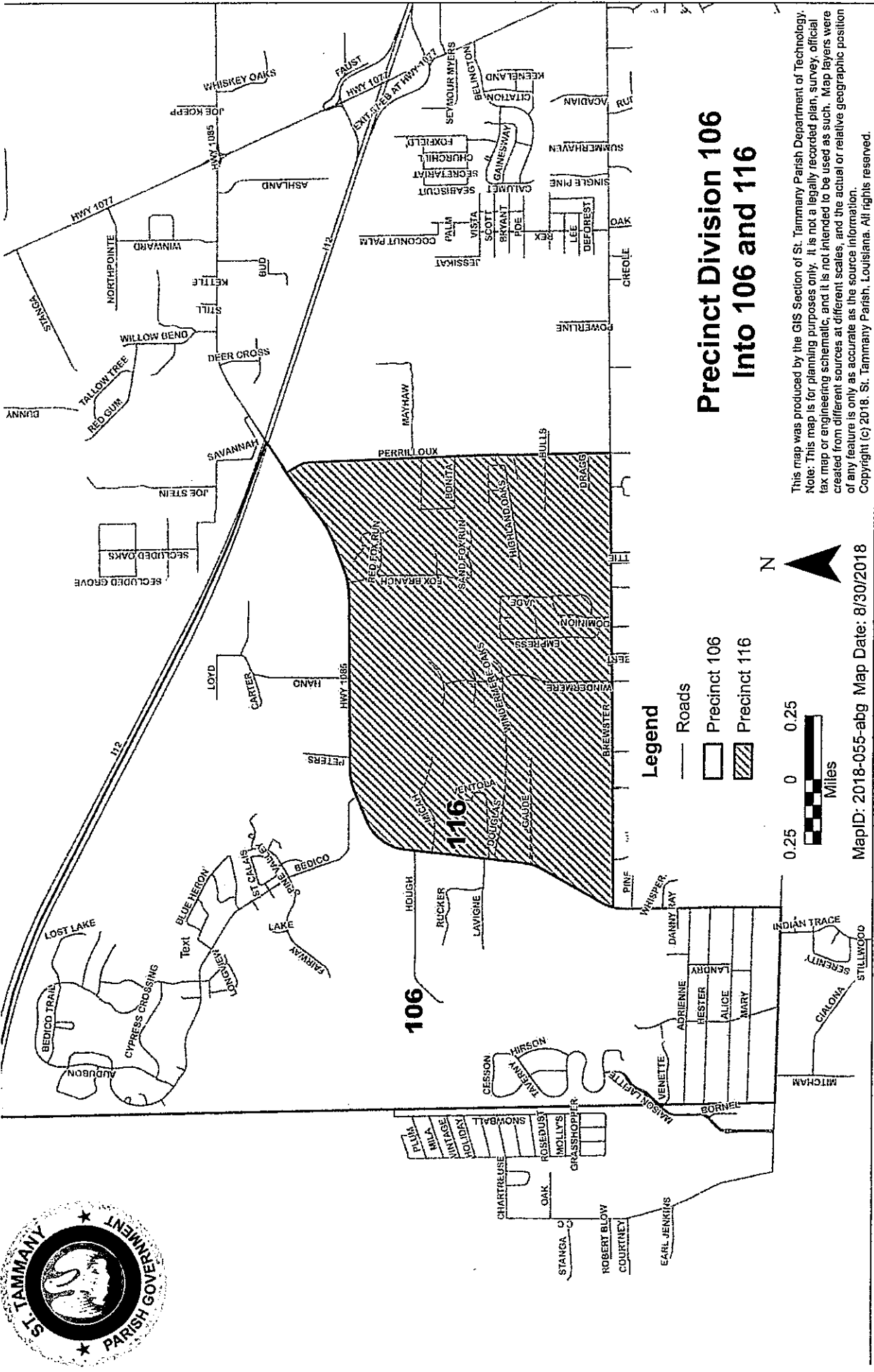


**Precinct Division 105
Into 105 and 115**



This map was produced by the GIS Section of St. Tammany Parish Department of Technology. Note: This map is for planning purposes only. It is not a legally recorded plan, survey, official tax map or engineering schematic, and it is not intended to be used as such. Map layers were created from different sources at different scales, and the actual or relative geographic position of any feature is only as accurate as the source information. Copyright (c) 2018. St. Tammany Parish, Louisiana. All rights reserved.

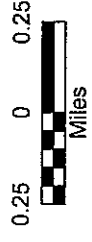
MapID: 2018-054-abg Map Date: 8/30/2018



Precinct Division 106 Into 106 and 116

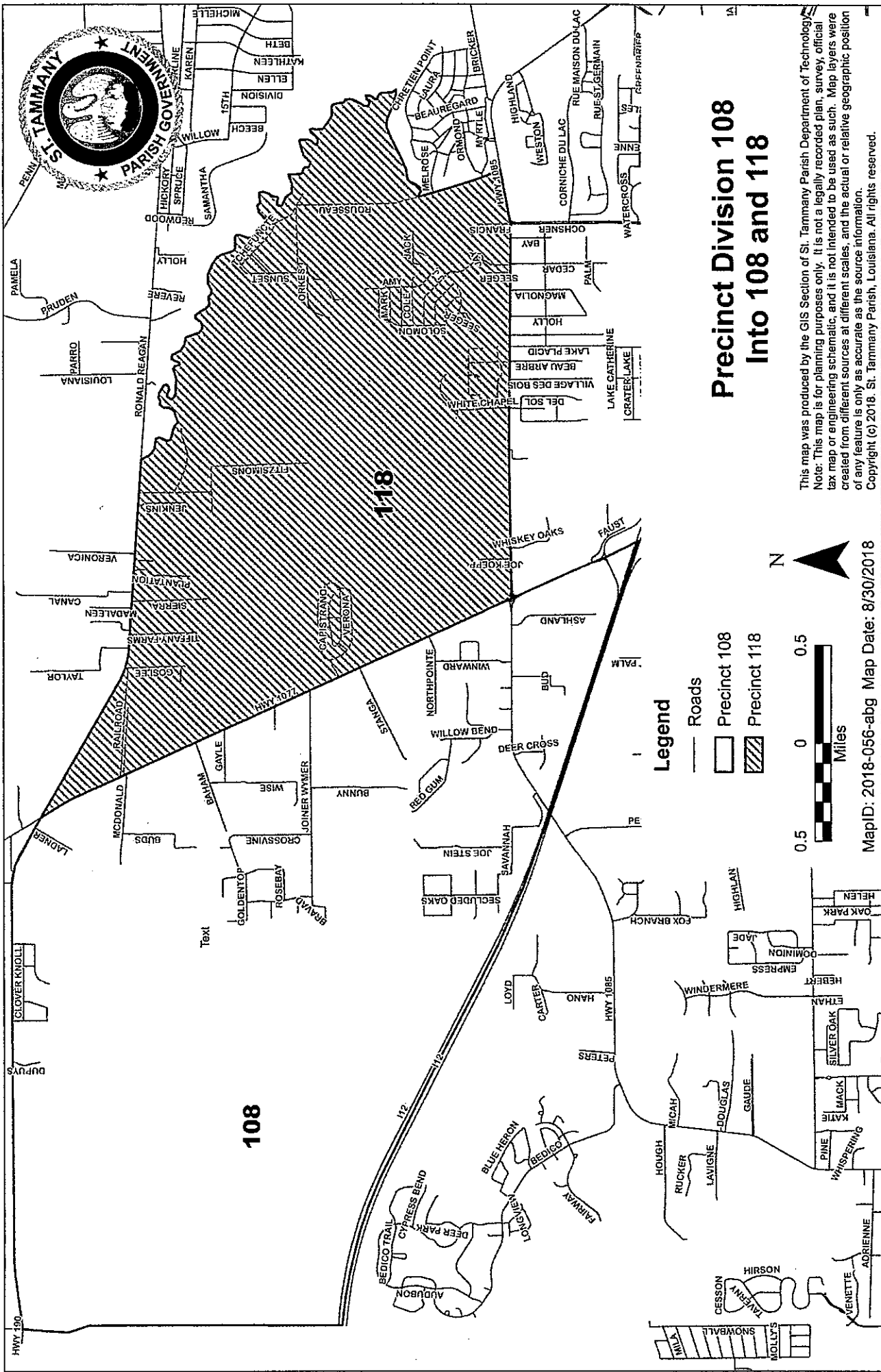
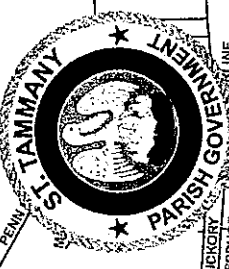
Legend

- Roads
- Precinct 106
- ▨ Precinct 116



MapID: 2018-055-abg Map Date: 8/30/2018

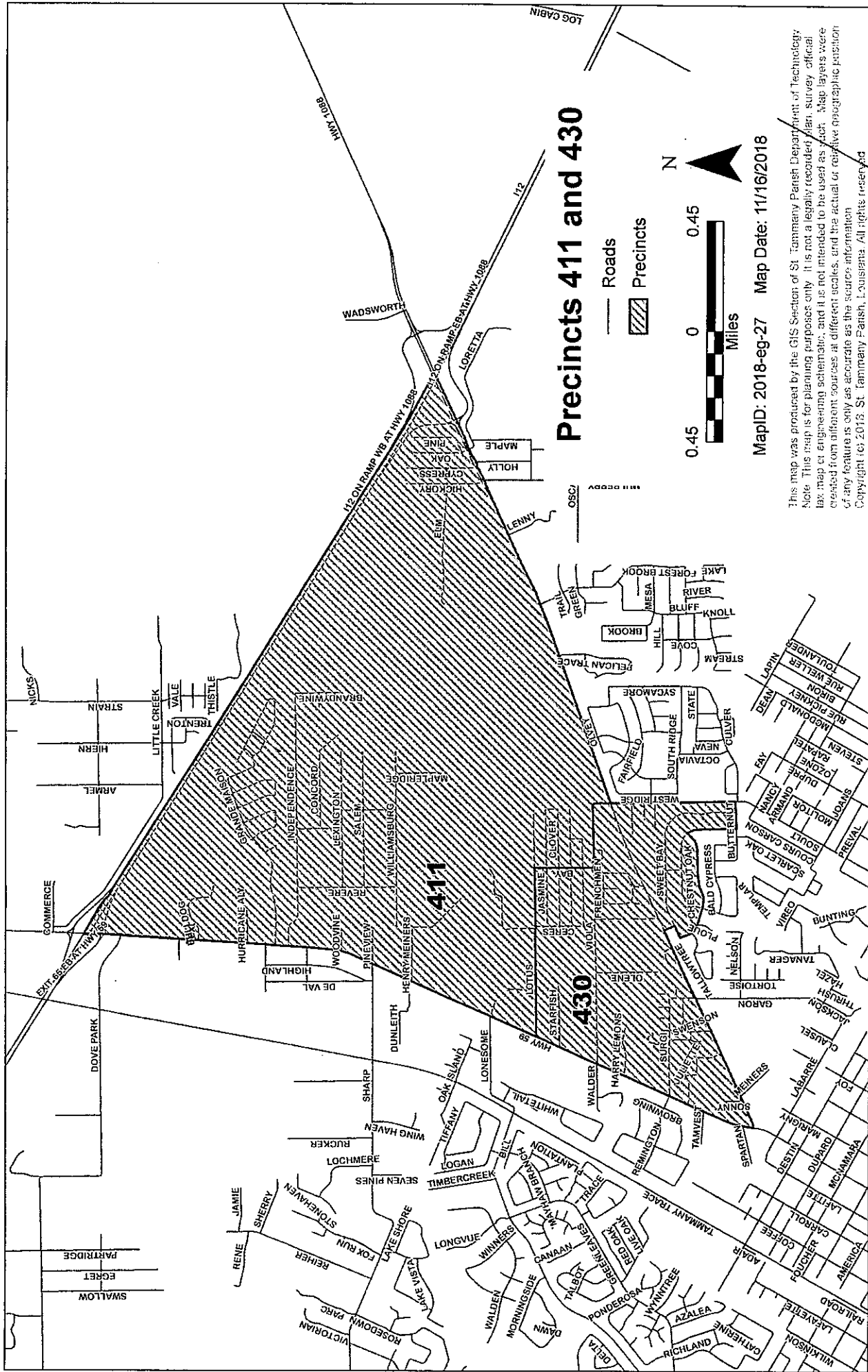
This map was produced by the GIS Section of St. Tammany Parish Department of Technology. Note: This map is for planning purposes only. It is not a legally recorded plan, survey, official tax map or engineering schematic, and it is not intended to be used as such. Map layers were created from different sources at different scales, and the actual or relative geographic position of any feature is only as accurate as the source information. Copyright (c) 2018. St. Tammany Parish, Louisiana. All rights reserved.



Precinct Division 108 Into 108 and 118

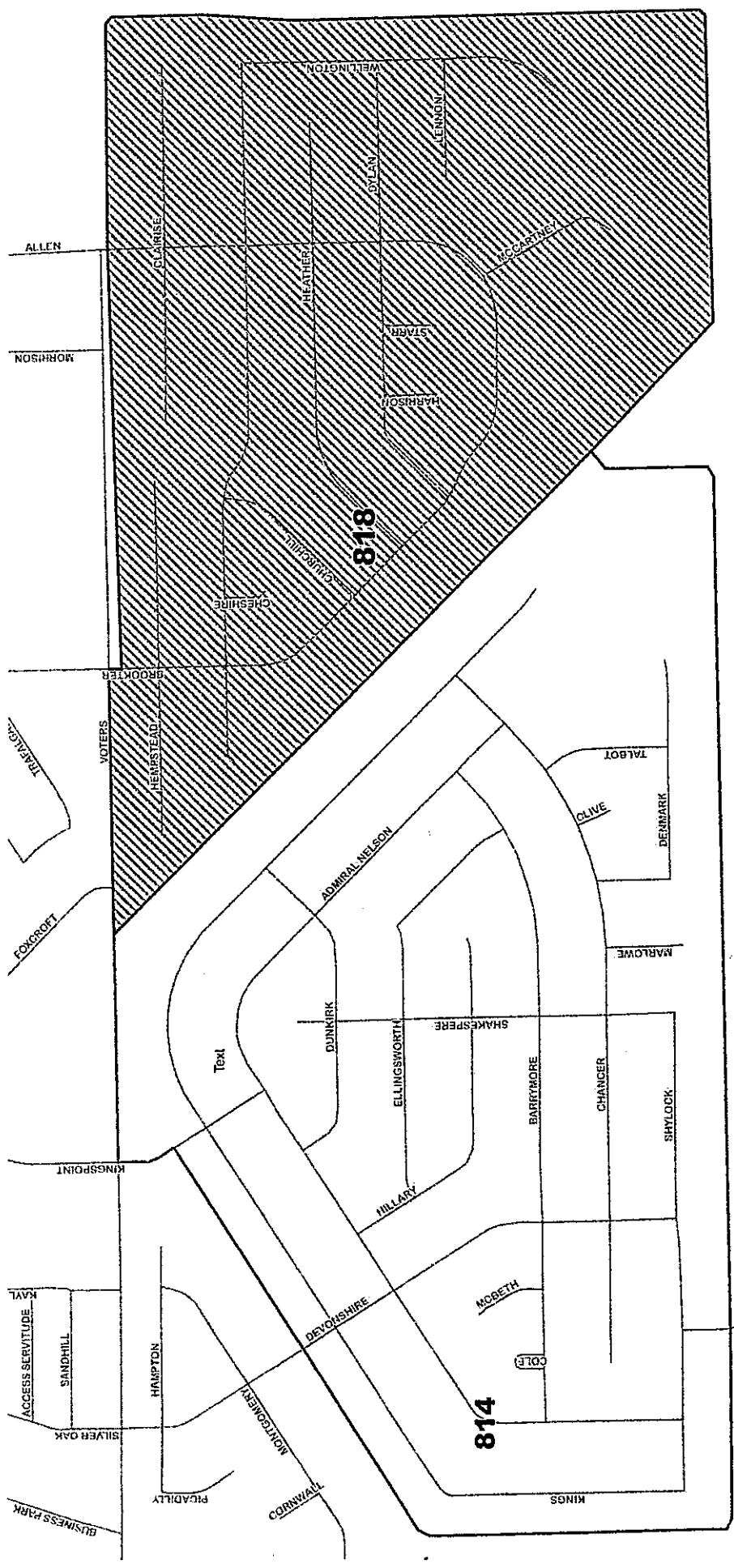
This map was produced by the GIS Section of St. Tammany Parish Department of Technology. Note: This map is for planning purposes only. It is not a legally recorded plan, survey, official tax map or engineering schematic, and it is not intended to be used as such. Map layers were created from different sources at different scales, and the actual or relative geographic position of any feature is only as accurate as the source information. Copyright (c) 2018. St. Tammany Parish, Louisiana. All rights reserved.

MapID: 2018-056-abg Map Date: 8/30/2018



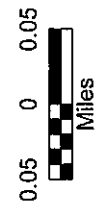
This map was produced by the GIS Section of St. Tammany Parish Department of Technology. Note: This map is for planning purposes only. It is not a legally recorded plan, survey official, tax map or engineering schematic, and it is not intended to be used as such. Map layers were created from different sources at different scales, and the actual or relative geographic position of any feature is only as accurate as the source information.

Copyright © 2018, St. Tammany Parish, Louisiana. All rights reserved.



Legend

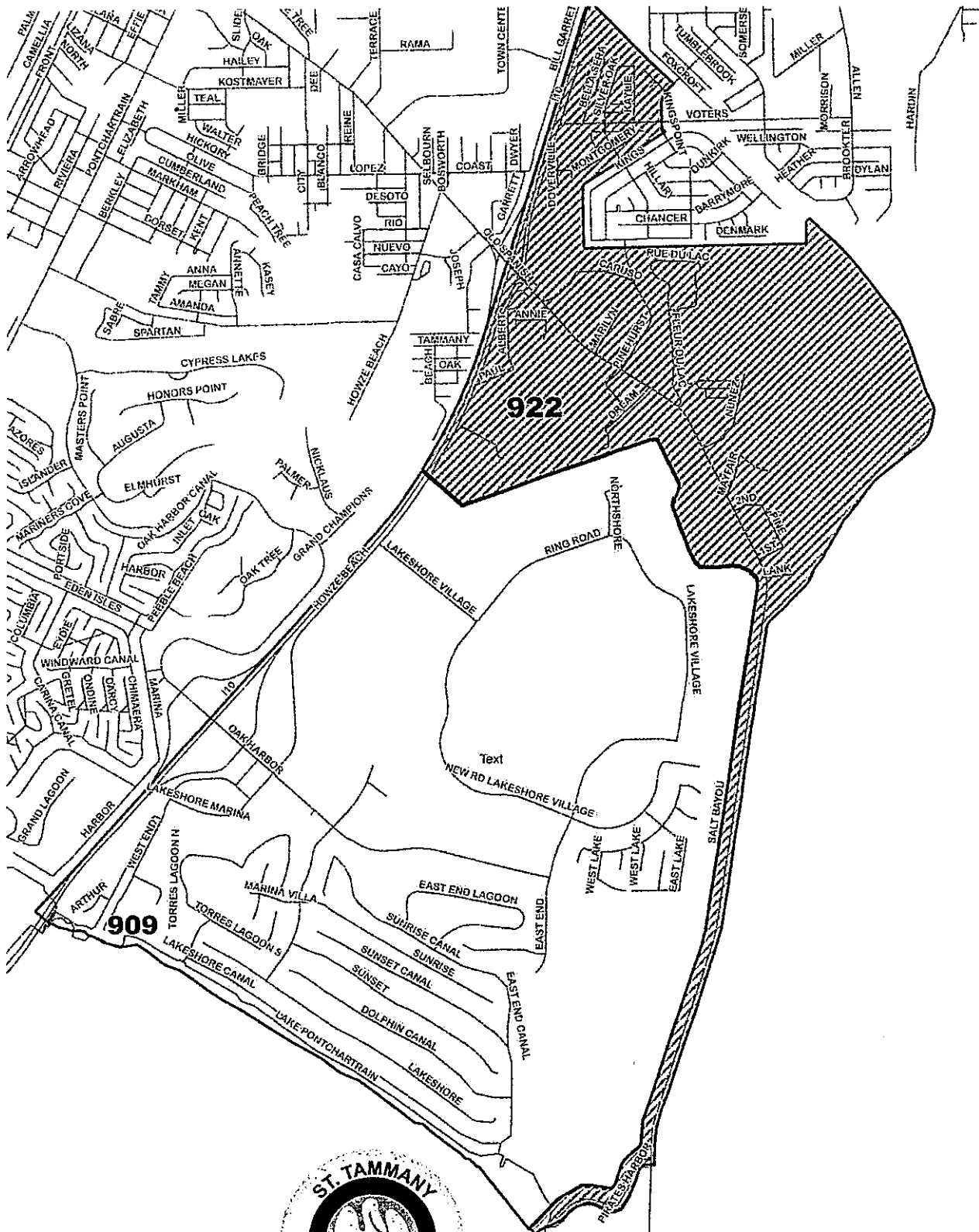
- Roads
- Precinct 814
- ▨ Precinct 818



MapID: 2018-058-abg Map Date: 8/30/2018

Precinct Division 814 Into 814 and 818

This map was produced by the GIS Section of St. Tammany Parish Department of Technology. Note: This map is for planning purposes only. It is not a legally recorded plan, survey, official tax map or engineering schematic, and it is not intended to be used as such. Map layers were created from different sources at different scales, and the actual or relative geographic position of any feature is only as accurate as the source information. Copyright (c) 2018, St. Tammany Parish, Louisiana. All rights reserved.

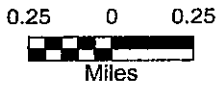


Legend

- Roads
- ▭ Precinct 909
- ▨ Precinct 922

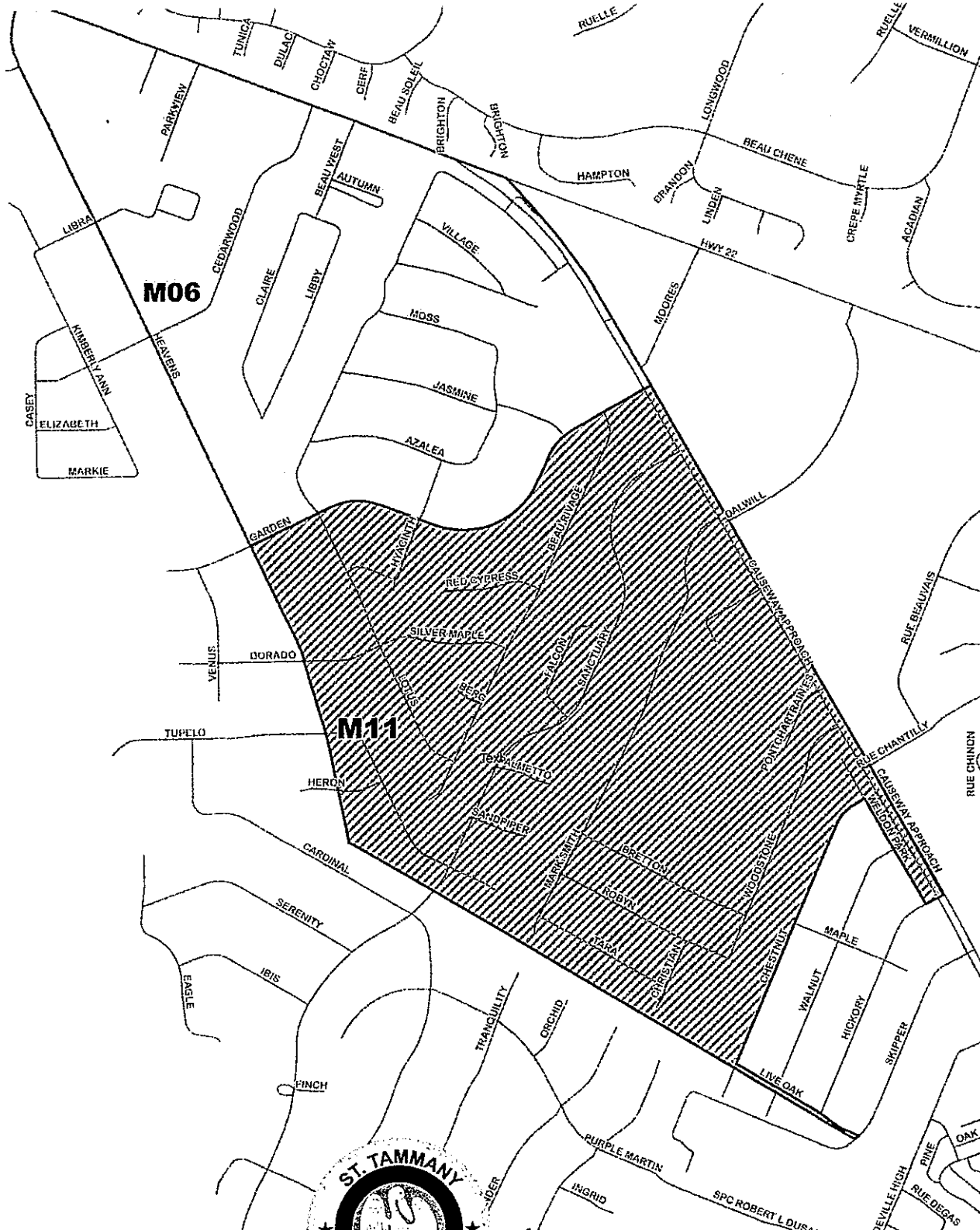


**Precinct Division 909
Into 909 and 922**



MapID: 2018-059-abg Map Date: 8/30/2018

This map was produced by the GIS Section of St. Tammany Parish Department of Technology. Note: This map is for planning purposes only. It is not a legally recorded plan, survey, official tax map or engineering schematic, and it is not intended to be used as such. Map layers were created from different sources at different scales, and the actual or relative geographic position of any feature is only as accurate as the source information. Copyright (c) 2018. St. Tammany Parish, Louisiana. All rights reserved.



- Legend**
- Roads
 - ▭ Precinct M06
 - ▨ Precinct M11

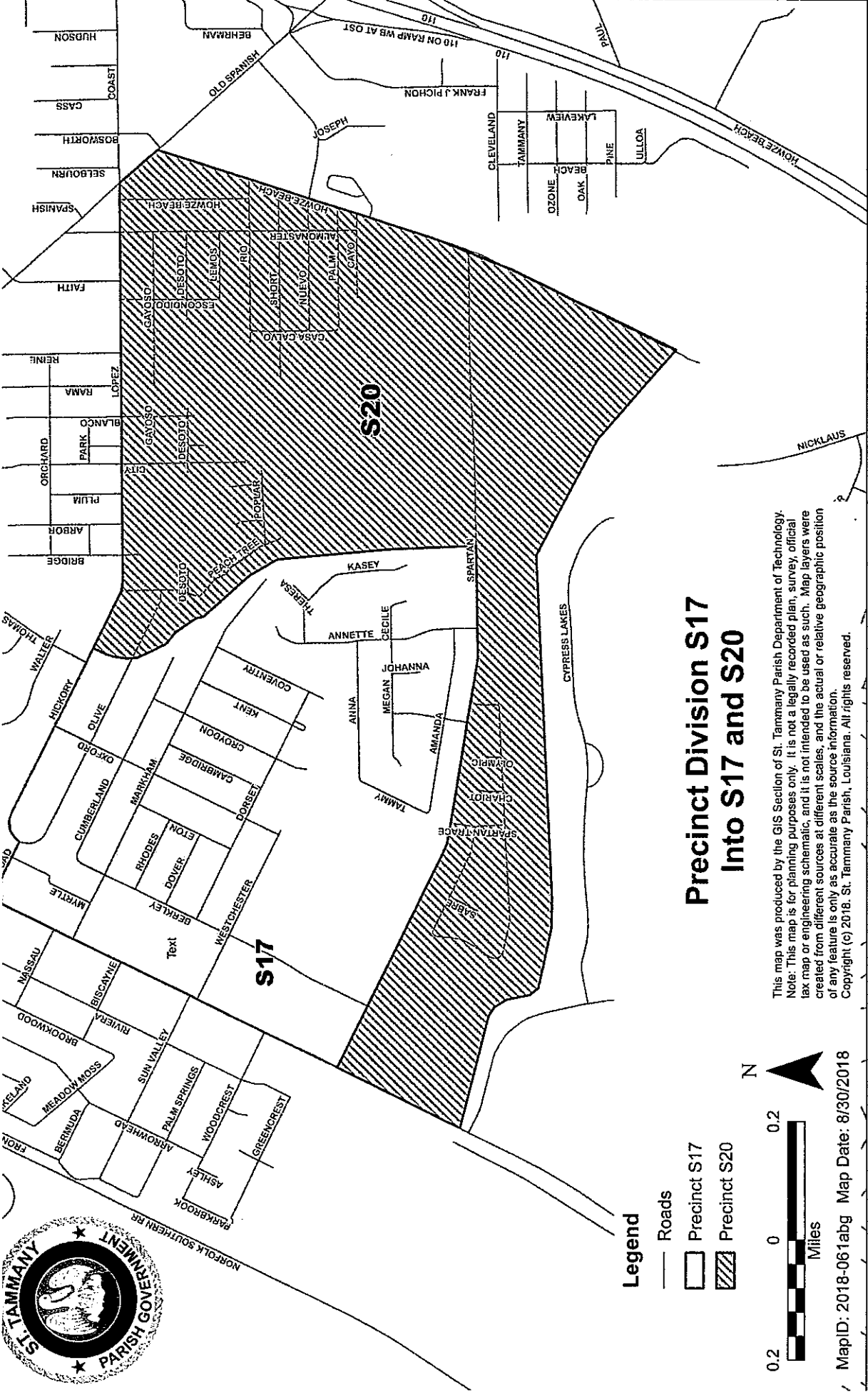


Precinct Division M06 Into M06 and M11



This map was produced by the GIS Section of St. Tammany Parish Department of Technology. Note: This map is for planning purposes only. It is not a legally recorded plan, survey, official tax map or engineering schematic, and it is not intended to be used as such. Map layers were created from different sources at different scales, and the actual or relative geographic position of any feature is only as accurate as the source information. Copyright (c) 2018. St. Tammany Parish, Louisiana. All rights reserved.

MapID: 2018-060abg Map Date: 8/30/2018

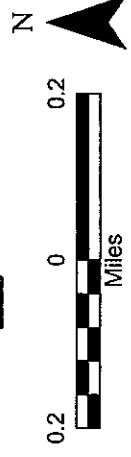


Precinct Division S17 Into S17 and S20

This map was produced by the GIS Section of St. Tammany Parish Department of Technology.
 Note: This map is for planning purposes only. It is not a legally recorded plan, survey, official tax map or engineering schematic, and it is not intended to be used as such. Map layers were created from different sources at different scales, and the actual or relative geographic position of any feature is only as accurate as the source information.
 Copyright (c) 2018, St. Tammany Parish, Louisiana. All rights reserved.

Legend

- Roads
- Precinct S17
- ▨ Precinct S20



MapID: 2018-061abg Map Date: 8/30/2018