

ST. TAMMANY PARISH COUNCIL

ORDINANCE

ORDINANCE CALENDAR NO: 6715

ORDINANCE COUNCIL SERIES NO: _____

COUNCIL SPONSOR: LORINO/COOPER

PROVIDED BY: PUBLIC WORK

INTRODUCED BY: MR. DAVIS

SECONDED BY: MR. TOLEDANO

ON THE 8 DAY OF JULY, 2021

AN ORDINANCE ACCEPTING FINALIZED SUBDIVISIONS INTO THE ROAD AND DRAINAGE INVENTORIES, SPECIFICALLY WATERCROSS PARKWAY (WARD 1, DISTRICT 1)

WHEREAS, Developer/Owner(s) have dedicated the rights of way to the public as indicated on the finalized subdivision plat recorded in the Clerk of Court’s office.

THE PARISH OF ST. TAMMANY HEREBY ORDAINS: that all area within right-of-way, the road base, surface drainage ditches, culverts, laterals, canals and appurtenances thereunto belonging to or otherwise appertaining to the below indicated developments and authorized in the Resolution/Ordinance stated shall be incorporated in the Parish Maintenance System.

BE IT FURTHER ORDAINED: that all parish regulations, policies, procedures and operating methods pertaining to the Parish Selective Maintenance System.

Streets to be accepted into the maintenance system are named:

DEVELOPMENT/SUBDIVISION STREET/POND NAME:

Watercross Parkway for 2,039 ft. (R01E042)

Watercross Parkway Bridge - 45 ft. timber bridge (B01E042)

REPEAL: All ordinances or parts of Ordinances in conflict herewith are hereby repealed.

SEVERABILITY: If any provision of this Ordinance shall be held to be invalid, such invalidity shall not affect other provisions herein which can be given effect without the invalid provision and to this end the provisions of this Ordinance are hereby declared to be severable.

EFFECTIVE DATE: This Ordinance shall become effective fifteen (15) days after adoption.

MOVED FOR ADOPTION BY: _____ SECONDED BY: _____

WHEREUPON THIS ORDINANCE WAS SUBMITTED TO A VOTE AND RESULTED IN THE FOLLOWING:

YEAS: _____

NAYS: _____

ABSTAIN: _____

ABSENT: _____

THIS ORDINANCE WAS DECLARED DULY ADOPTED AT A REGULAR MEETING OF THE PARISH COUNCIL ON THE 5 DAY OF AUGUST , 2021 ; AND BECOMES ORDINANCE COUNCIL SERIES NO _____.

MICHAEL R. LORINO, JR. , COUNCIL CHAIRMAN

ATTEST:

KATRINA L. BUCKLEY, COUNCIL CLERK

MICHAEL B. COOPER, PARISH PRESIDENT

Published Introduction: JUNE 30 , 2021

Published Adoption: _____, 2021

Delivered to Parish President: _____, 2021 at _____

Returned to Council Clerk: _____, 2021 at _____

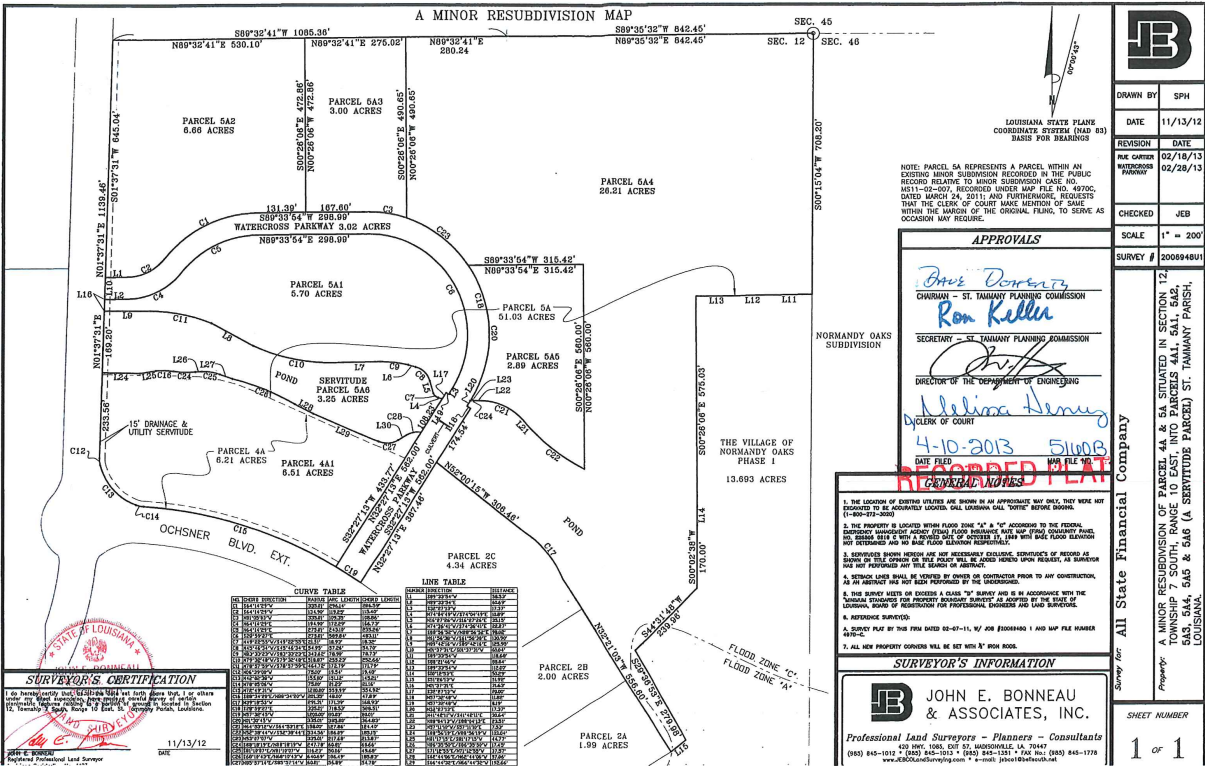
ADMINISTRATIVE COMMENT

Reference No. _____

Administrative Department: Public Works

PURPOSE: To accept finalized subdivision into the road inventory.
Developer/Owners(s) have dedicated the rights of way to the public as indicated on the finalized subdivision plats recorded in the Clerk of Court's Office.

RECOMMENDATION: The Public Works Department recommends adoption.



A MINOR RESUBDIVISION MAP

LINE NO.	BEARING	DISTANCE	AREA
1	S89°32'41" E	539.10'	
2	S89°32'41" E	276.02'	
3	S89°35'32" E	642.45'	
4	S89°32'41" E	289.24'	
5	S89°35'32" E	642.45'	
6	S00°28'00" W	477.80'	
7	S00°28'00" W	477.80'	
8	S00°28'00" W	400.95'	
9	S00°28'00" W	400.95'	
10	S00°28'00" W	400.95'	
11	S00°28'00" W	400.95'	
12	S00°28'00" W	400.95'	
13	S00°28'00" W	400.95'	
14	S00°28'00" W	400.95'	
15	S00°28'00" W	400.95'	
16	S00°28'00" W	400.95'	
17	S00°28'00" W	400.95'	
18	S00°28'00" W	400.95'	
19	S00°28'00" W	400.95'	
20	S00°28'00" W	400.95'	
21	S00°28'00" W	400.95'	
22	S00°28'00" W	400.95'	
23	S00°28'00" W	400.95'	
24	S00°28'00" W	400.95'	
25	S00°28'00" W	400.95'	
26	S00°28'00" W	400.95'	
27	S00°28'00" W	400.95'	
28	S00°28'00" W	400.95'	
29	S00°28'00" W	400.95'	
30	S00°28'00" W	400.95'	
31	S00°28'00" W	400.95'	
32	S00°28'00" W	400.95'	
33	S00°28'00" W	400.95'	
34	S00°28'00" W	400.95'	
35	S00°28'00" W	400.95'	
36	S00°28'00" W	400.95'	
37	S00°28'00" W	400.95'	
38	S00°28'00" W	400.95'	
39	S00°28'00" W	400.95'	
40	S00°28'00" W	400.95'	
41	S00°28'00" W	400.95'	
42	S00°28'00" W	400.95'	
43	S00°28'00" W	400.95'	
44	S00°28'00" W	400.95'	
45	S00°28'00" W	400.95'	
46	S00°28'00" W	400.95'	
47	S00°28'00" W	400.95'	
48	S00°28'00" W	400.95'	
49	S00°28'00" W	400.95'	
50	S00°28'00" W	400.95'	
51	S00°28'00" W	400.95'	
52	S00°28'00" W	400.95'	
53	S00°28'00" W	400.95'	
54	S00°28'00" W	400.95'	
55	S00°28'00" W	400.95'	
56	S00°28'00" W	400.95'	
57	S00°28'00" W	400.95'	
58	S00°28'00" W	400.95'	
59	S00°28'00" W	400.95'	
60	S00°28'00" W	400.95'	
61	S00°28'00" W	400.95'	
62	S00°28'00" W	400.95'	
63	S00°28'00" W	400.95'	
64	S00°28'00" W	400.95'	
65	S00°28'00" W	400.95'	
66	S00°28'00" W	400.95'	
67	S00°28'00" W	400.95'	
68	S00°28'00" W	400.95'	
69	S00°28'00" W	400.95'	
70	S00°28'00" W	400.95'	
71	S00°28'00" W	400.95'	
72	S00°28'00" W	400.95'	
73	S00°28'00" W	400.95'	
74	S00°28'00" W	400.95'	
75	S00°28'00" W	400.95'	
76	S00°28'00" W	400.95'	
77	S00°28'00" W	400.95'	
78	S00°28'00" W	400.95'	
79	S00°28'00" W	400.95'	
80	S00°28'00" W	400.95'	
81	S00°28'00" W	400.95'	
82	S00°28'00" W	400.95'	
83	S00°28'00" W	400.95'	
84	S00°28'00" W	400.95'	
85	S00°28'00" W	400.95'	
86	S00°28'00" W	400.95'	
87	S00°28'00" W	400.95'	
88	S00°28'00" W	400.95'	
89	S00°28'00" W	400.95'	
90	S00°28'00" W	400.95'	
91	S00°28'00" W	400.95'	
92	S00°28'00" W	400.95'	
93	S00°28'00" W	400.95'	
94	S00°28'00" W	400.95'	
95	S00°28'00" W	400.95'	
96	S00°28'00" W	400.95'	
97	S00°28'00" W	400.95'	
98	S00°28'00" W	400.95'	
99	S00°28'00" W	400.95'	
100	S00°28'00" W	400.95'	

APPROVALS

Bois Dorez
CHAIRMAN - ST. TAMMANY PLANNING COMMISSION

Ron Keller
SECRETARY - ST. TAMMANY PLANNING COMMISSION

[Signature]
DIRECTOR OF THE DEPARTMENT OF ENGINEERING

Melissa Henry
CLERK OF COURT

DATE FILED: 4-10-2013
FILE NO: 51003

RECORDED PLAT

1. THE LOCATION OF BOUNDARIES SHOWN ARE SHOWN AS NEAR APPROXIMATE BUT NOT TO BE CONSIDERED AS ACCURATELY LOCATED, CALL EXAMINA CALL "VERIFY" BEFORE BIDDING. (1-400-571-8102)

2. THE PROPERTY IS LOCATED WITHIN FLOOD ZONE "A" & "C" ACCORDING TO THE FLOODING SURVEY CONDUCTED BY THE STATE OF LOUISIANA. THE FLOODING SURVEY WAS CONDUCTED BY THE STATE OF LOUISIANA AND IS A RECORDED MAP OF THE STATE OF LOUISIANA. THE FLOODING SURVEY WAS CONDUCTED BY THE STATE OF LOUISIANA AND IS A RECORDED MAP OF THE STATE OF LOUISIANA. THE FLOODING SURVEY WAS CONDUCTED BY THE STATE OF LOUISIANA AND IS A RECORDED MAP OF THE STATE OF LOUISIANA.

3. BIDDERS SHALL VERIFY AND NOT NECESSARILY OBTAIN STRUCTURES OF RECORD AS SHOWN ON THIS MAP OR THIS PLAT WILL BE DONE PRIOR TO ANY BIDDING. AS BIDDING HAS NOT YET BEEN PERFORMED ANY TITLE SEARCH IS HEREBY.

4. THIS SURVEY SHALL BE REVIEWED BY OWNER OR CONTRACTOR PRIOR TO ANY CONSTRUCTION, AS AN ABSTRACT HAS NOT BEEN PERFORMED BY THE UNDERWRITER.

5. THE SURVEY SHALL BE CONDUCTED IN ACCORDANCE WITH THE STANDARD STANDARD FOR PROPERTY BOUNDARY SURVEYS AS ADOPTED BY THE STATE OF LOUISIANA, BOARD OF SURVEYORS FOR PROFESSIONAL ENGINEERS AND LAND SURVEYORS.

6. REFERENCE SURVEYS:

7. ALL NEW PROPERTY CORNERS WILL BE SET WITH AN IRON ROD.

SURVEYOR'S INFORMATION

JOHN E. BONNEAU & ASSOCIATES, INC.

Professional Land Surveyors - Planners - Consultants
429 8th St., Metairie, LA 70001
(504) 885-1012 • (504) 885-1013 • (504) 885-1014 • (504) 885-1015 • (504) 885-1016 • (504) 885-1017 • (504) 885-1018 • (504) 885-1019 • (504) 885-1020 • (504) 885-1021 • (504) 885-1022 • (504) 885-1023 • (504) 885-1024 • (504) 885-1025 • (504) 885-1026 • (504) 885-1027 • (504) 885-1028 • (504) 885-1029 • (504) 885-1030 • (504) 885-1031 • (504) 885-1032 • (504) 885-1033 • (504) 885-1034 • (504) 885-1035 • (504) 885-1036 • (504) 885-1037 • (504) 885-1038 • (504) 885-1039 • (504) 885-1040 • (504) 885-1041 • (504) 885-1042 • (504) 885-1043 • (504) 885-1044 • (504) 885-1045 • (504) 885-1046 • (504) 885-1047 • (504) 885-1048 • (504) 885-1049 • (504) 885-1050 • (504) 885-1051 • (504) 885-1052 • (504) 885-1053 • (504) 885-1054 • (504) 885-1055 • (504) 885-1056 • (504) 885-1057 • (504) 885-1058 • (504) 885-1059 • (504) 885-1060 • (504) 885-1061 • (504) 885-1062 • (504) 885-1063 • (504) 885-1064 • (504) 885-1065 • (504) 885-1066 • (504) 885-1067 • (504) 885-1068 • (504) 885-1069 • (504) 885-1070 • (504) 885-1071 • (504) 885-1072 • (504) 885-1073 • (504) 885-1074 • (504) 885-1075 • (504) 885-1076 • (504) 885-1077 • (504) 885-1078 • (504) 885-1079 • (504) 885-1080 • (504) 885-1081 • (504) 885-1082 • (504) 885-1083 • (504) 885-1084 • (504) 885-1085 • (504) 885-1086 • (504) 885-1087 • (504) 885-1088 • (504) 885-1089 • (504) 885-1090 • (504) 885-1091 • (504) 885-1092 • (504) 885-1093 • (504) 885-1094 • (504) 885-1095 • (504) 885-1096 • (504) 885-1097 • (504) 885-1098 • (504) 885-1099 • (504) 885-1100 • (504) 885-1101 • (504) 885-1102 • (504) 885-1103 • (504) 885-1104 • (504) 885-1105 • (504) 885-1106 • (504) 885-1107 • (504) 885-1108 • (504) 885-1109 • (504) 885-1110 • (504) 885-1111 • (504) 885-1112 • (504) 885-1113 • (504) 885-1114 • (504) 885-1115 • (504) 885-1116 • (504) 885-1117 • (504) 885-1118 • (504) 885-1119 • (504) 885-1120 • (504) 885-1121 • (504) 885-1122 • (504) 885-1123 • (504) 885-1124 • (504) 885-1125 • (504) 885-1126 • (504) 885-1127 • (504) 885-1128 • (504) 885-1129 • (504) 885-1130 • (504) 885-1131 • (504) 885-1132 • (504) 885-1133 • (504) 885-1134 • (504) 885-1135 • (504) 885-1136 • (504) 885-1137 • (504) 885-1138 • (504) 885-1139 • (504) 885-1140 • (504) 885-1141 • (504) 885-1142 • (504) 885-1143 • (504) 885-1144 • (504) 885-1145 • (504) 885-1146 • (504) 885-1147 • (504) 885-1148 • (504) 885-1149 • (504) 885-1150 • (504) 885-1151 • (504) 885-1152 • (504) 885-1153 • (504) 885-1154 • (504) 885-1155 • (504) 885-1156 • (504) 885-1157 • (504) 885-1158 • (504) 885-1159 • (504) 885-1160 • (504) 885-1161 • (504) 885-1162 • (504) 885-1163 • (504) 885-1164 • (504) 885-1165 • (504) 885-1166 • (504) 885-1167 • (504) 885-1168 • (504) 885-1169 • (504) 885-1170 • (504) 885-1171 • (504) 885-1172 • (504) 885-1173 • (504) 885-1174 • (504) 885-1175 • (504) 885-1176 • (504) 885-1177 • (504) 885-1178 • (504) 885-1179 • (504) 885-1180 • (504) 885-1181 • (504) 885-1182 • (504) 885-1183 • (504) 885-1184 • (504) 885-1185 • (504) 885-1186 • (504) 885-1187 • (504) 885-1188 • (504) 885-1189 • (504) 885-1190 • (504) 885-1191 • (504) 885-1192 • (504) 885-1193 • (504) 885-1194 • (504) 885-1195 • (504) 885-1196 • (504) 885-1197 • (504) 885-1198 • (504) 885-1199 • (504) 885-1200 • (504) 885-1201 • (504) 885-1202 • (504) 885-1203 • (504) 885-1204 • (504) 885-1205 • (504) 885-1206 • (504) 885-1207 • (504) 885-1208 • (504) 885-1209 • (504) 885-1210 • (504) 885-1211 • (504) 885-1212 • (504) 885-1213 • (504) 885-1214 • (504) 885-1215 • (504) 885-1216 • (504) 885-1217 • (504) 885-1218 • (504) 885-1219 • (504) 885-1220 • (504) 885-1221 • (504) 885-1222 • (504) 885-1223 • (504) 885-1224 • (504) 885-1225 • (504) 885-1226 • (504) 885-1227 • (504) 885-1228 • (504) 885-1229 • (504) 885-1230 • (504) 885-1231 • (504) 885-1232 • (504) 885-1233 • (504) 885-1234 • (504) 885-1235 • (504) 885-1236 • (504) 885-1237 • (504) 885-1238 • (504) 885-1239 • (504) 885-1240 • (504) 885-1241 • (504) 885-1242 • (504) 885-1243 • (504) 885-1244 • (504) 885-1245 • (504) 885-1246 • (504) 885-1247 • (504) 885-1248 • (504) 885-1249 • (504) 885-1250 • (504) 885-1251 • (504) 885-1252 • (504) 885-1253 • (504) 885-1254 • (504) 885-1255 • (504) 885-1256 • (504) 885-1257 • (504) 885-1258 • (504) 885-1259 • (504) 885-1260 • (504) 885-1261 • (504) 885-1262 • (504) 885-1263 • (504) 885-1264 • (504) 885-1265 • (504) 885-1266 • (504) 885-1267 • (504) 885-1268 • (504) 885-1269 • (504) 885-1270 • (504) 885-1271 • (504) 885-1272 • (504) 885-1273 • (504) 885-1274 • (504) 885-1275 • (504) 885-1276 • (504) 885-1277 • (504) 885-1278 • (504) 885-1279 • (504) 885-1280 • (504) 885-1281 • (504) 885-1282 • (504) 885-1283 • (504) 885-1284 • (504) 885-1285 • (504) 885-1286 • (504) 885-1287 • (504) 885-1288 • (504) 885-1289 • (504) 885-1290 • (504) 885-1291 • (504) 885-1292 • (504) 885-1293 • (504) 885-1294 • (504) 885-1295 • (504) 885-1296 • (504) 885-1297 • (504) 885-1298 • (504) 885-1299 • (504) 885-1300 • (504) 885-1301 • (504) 885-1302 • (504) 885-1303 • (504) 885-1304 • (504) 885-1305 • (504) 885-1306 • (504) 885-1307 • (504) 885-1308 • (504) 885-1309 • (504) 885-1310 • (504) 885-1311 • (504) 885-1312 • (504) 885-1313 • (504) 885-1314 • (504) 885-1315 • (504) 885-1316 • (504) 885-1317 • (504) 885-1318 • (504) 885-1319 • (504) 885-1320 • (504) 885-1321 • (504) 885-1322 • (504) 885-1323 • (504) 885-1324 • (504) 885-1325 • (504) 885-1326 • (504) 885-1327 • (504) 885-1328 • (504) 885-1329 • (504) 885-1330 • (504) 885-1331 • (504) 885-1332 • (504) 885-1333 • (504) 885-1334 • (504) 885-1335 • (504) 885-1336 • (504) 885-1337 • (504) 885-1338 • (504) 885-1339 • (504) 885-1340 • (504) 885-1341 • (504) 885-1342 • (504) 885-1343 • (504) 885-1344 • (504) 885-1345 • (504) 885-1346 • (504) 885-1347 • (504) 885-1348 • (504) 885-1349 • (504) 885-1350 • (504) 885-1351 • (504) 885-1352 • (504) 885-1353 • (504) 885-1354 • (504) 885-1355 • (504) 885-1356 • (504) 885-1357 • (504) 885-1358 • (504) 885-1359 • (504) 885-1360 • (504) 885-1361 • (504) 885-1362 • (504) 885-1363 • (504) 885-1364 • (504) 885-1365 • (504) 885-1366 • (504) 885-1367 • (504) 885-1368 • (504) 885-1369 • (504) 885-1370 • (504) 885-1371 • (504) 885-1372 • (504) 885-1373 • (504) 885-1374 • (504) 885-1375 • (504) 885-1376 • (504) 885-1377 • (504) 885-1378 • (504) 885-1379 • (504) 885-1380 • (504) 885-1381 • (504) 885-1382 • (504) 885-1383 • (504) 885-1384 • (504) 885-1385 • (504) 885-1386 • (504) 885-1387 • (504) 885-1388 • (504) 885-1389 • (504) 885-1390 • (504) 885-1391 • (504) 885-1392 • (504) 885-1393 • (504) 885-1394 • (504) 885-1395 • (504) 885-1396 • (504) 885-1397 • (504) 885-1398 • (504) 885-1399 • (504) 885-1400 • (504) 885-1401 • (504) 885-1402 • (504) 885-1403 • (504) 885-1404 • (504) 885-1405 • (504) 885-1406 • (504) 885-1407 • (504) 885-1408 • (504) 885-1409 • (504) 885-1410 • (504) 885-1411 • (504) 885-1412 • (504) 885-1413 • (504) 885-1414 • (504) 885-1415 • (504) 885-1416 • (504) 885-1417 • (504) 885-1418 • (504) 885-1419 • (504) 885-1420 • (504) 885-1421 • (504) 885-1422 • (504) 885-1423 • (504) 885-1424 • (504) 885-1425 • (504) 885-1426 • (504) 885-1427 • (504) 885-1428 • (504) 885-1429 • (504) 885-1430 • (504) 885-1431 • (504) 885-1432 • (504) 885-1433 • (504) 885-1434 • (504) 885-1435 • (504) 885-1436 • (504) 885-1437 • (504) 885-1438 • (504) 885-1439 • (504) 885-1440 • (504) 885-1441 • (504) 885-1442 • (504) 885-1443 • (504) 885-1444 • (504) 885-1445 • (504) 885-1446 • (504) 885-1447 • (504) 885-1448 • (504) 885-1449 • (504) 885-1450 • (504) 885-1451 • (504) 885-1452 • (504) 885-1453 • (504) 885-1454 • (504) 885-1455 • (504) 885-1456 • (504) 885-1457 • (504) 885-1458 • (504) 885-1459 • (504) 885-1460 • (504) 885-1461 • (504) 885-1462 • (504) 885-1463 • (504) 885-1464 • (504) 885-1465 • (504) 885-1466 • (504) 885-1467 • (504) 885-1468 • (504) 885-1469 • (504) 885-1470 • (504) 885-1471 • (504) 885-1472 • (504) 885-1473 • (504) 885-1474 • (504) 885-1475 • (504) 885-1476 • (504) 885-1477 • (504) 885-1478 • (504) 885-1479 • (504) 885-1480 • (504) 885-1481 • (504) 885-1482 • (504) 885-1483 • (504) 885-1484 • (504) 885-1485 • (504) 885-1486 • (504) 885-1487 • (504) 885-1488 • (504) 885-1489 • (504) 885-1490 • (504) 885-1491 • (504) 885-1492 • (504) 885-1493 • (504)

ST. TAMMANY PARISH COUNCIL

RESOLUTION

RESOLUTION COUNCIL SERIES NO. C-6318

COUNCIL SPONSOR: LORINO/COOPER PROVIDED BY: ENGINEERING
 RESOLUTION TO TAKE ACTION ON WARRANTY AND
 PERFORMANCE OBLIGATIONS

WHEREAS, The Department of Finance and the Department of Engineering have notified the Parish Council that certain securities for subdivision Performance and Warranty Obligations are maturing in the near future; and

WHEREAS, these Performance and Warranty Obligations have been reviewed by said Departments which have made recommendations thereon to the Parish Council.

THE PARISH OF ST. TAMMANY HEREBY RESOLVES, by the St. Tammany Parish Council acting in its capacity as the governing authority, that it hereby accepts the recommendation of the Department of Finance and the Department of Engineering, and approves the following action regarding Performance and Warranty Obligations as shown.

BE IT FURTHER RESOLVED, that failure to renew or to post an acceptable security on its due date will cause same to be called, and the Department of Finance and the Department of Engineering are hereby authorized and directed to do so.

NAME OF SUBDIVISION	OBLIGATION	RECOMMENDATION
Ashton Parc Subdivision, 2nd Filing Amount: \$ 73,800.00 Expires: October 27, 2020 Ward 8, District 8	WARRANTY (Extended)	Release
Bedico Creek Subdivision, Parcel C-1 Amount: \$ 18,800.00 Expires: October 18, 2020 Ward 1, District 1	WARRANTY	Release upon expiration
Grand Oaks Subdivision, Phase 2-C Amount: \$ 54,600.00 Expires: October 18, 2020 Ward 1, District 1	WARRANTY (Extended)	Extend for one (1) year or until the work is satisfactorily accomplished.
Guste Island Estates Subdivision, Parcel D-2 Amount: \$ 64,300.00 Expires: October 9, 2020 Ward 1, District 4	WARRANTY (Extended)	Extend for one (1) year or until the work is satisfactorily accomplished.
Sherry Court (Angelic Estates Subdivision) Amount: \$ 4,400.00 Expires: October 16, 2020 Ward 3, District 2	WARRANTY	Extend for one (1) year or until the work is satisfactorily accomplished.
The Preserve at River Chase Subdivision, Phase 1-B Amount: \$ 14,300.00 Expires: October 19, 2020 Ward 1, District 1	WARRANTY	Extend for one (1) year or until the work is satisfactorily accomplished.

Watercross Parkway (Timber Vehicular Bridge)	WARRANTY	Release
Minor Subdivision #MS13-01-003		
Amount: \$ 25,000.00		
Expires: January 8, 2021		
Ward 1, District 1		
Watercross Parkway (Roadway)	WARRANTY	Release
Minor Subdivision #MS13-01-003		
Amount: \$ 48,000.00		
Expires: January 8, 2021		
Ward 1, District 1		

THIS RESOLUTION HAVING BEEN SUBMITTED TO A VOTE, THE VOTE THEREON WAS AS FOLLOWS:

MOVED FOR ADOPTION BY: MR. STEFANCIK SECONDED BY: MS. TANNER

YEAS: DEAN, CAZAUBON, LORINO, TOLEDANO, TANNER, DAVIS, CANULETTE, M. SMITH, O'BRIEN, STEFANCIK, BINDER, AIREY, T. SMITH (13)

NAYS: (0)

ABSTAIN: (0)

ABSENT: FITZGERALD (1)

THIS RESOLUTION WAS DECLARED ADOPTED ON THE 3 DAY OF SEPTEMBER, 2020, AT A REGULAR MEETING OF THE PARISH COUNCIL, A QUORUM OF THE MEMBERS BEING PRESENT AND VOTING.

ATTEST:


KATRINA L. BUCKLEY, COUNCIL CLERK


MICHAEL R. LORINO, JR., COUNCIL CHAIRMAN



ST. TAMMANY PARISH
MICHAEL B. COOPER
PARISH PRESIDENT

ADMINISTRATIVE COMMENT

The following recommendations for the below listed Performance & Warranty Obligations are as follows:

1. Ashton Parc Subdivision - 2nd Filing
Extended Warranty Obligation - \$75,800.00 - Release
2. Badico Creek Subdivision - Parcel C-1
Warranty Obligation - \$18,800.00 - Release upon expiration
3. Grand Oaks Subdivision, Phase 2-C
Extended Warranty Obligation - \$54,600.00 - Extend
4. Guste Island Estates Subdivision, Parcel D-2
Extended Warranty Obligation - \$64,300.00 - Extend
5. The Preserve at River Chase, Phase 1B
Warranty Obligation - \$14,300.00 - Extend
6. Sherry Court (Angelic Estates Subdivision)
Warranty Obligation - \$4,400.00 - Extend
7. Watercross Parkway (Timber Vehicular Bridge)
Warranty Obligation - \$25,000.00 - Release
8. Watercross Parkway (Roadway)
Warranty Obligation - \$48,600.00 - Release

NAME OF SUBDIVISION	OBLIGATION	RECOMMENDATION
Ashton Parc Subdivision, 2nd Filing Amount: \$73,800.00 Expires: October 27, 2020 Ward 8, District 8	WARRANTY (Extended)	Release
Redico Creek Subdivision, Parcel C-1 Amount: \$18,800.00 Expires: October 18, 2020 Ward 1, District 1	WARRANTY	Release upon expiration
Grand Oaks Subdivision, Phase 2-C Amount: \$34,600.00 Expires: October 18, 2020 Ward 1, District 1	WARRANTY (Extended)	Extend for one (1) year or until the work is satisfactorily accomplished.
Coiste Island Estates Subdivision, Parcel D-2 Amount: \$49,300.00 Expires: October 3, 2020 Ward 1, District 4	WARRANTY (Extended)	Extend for one (1) year or until the work is satisfactorily accomplished.
Sherry Court (Angelic Estates Subdivision) Amount: \$4,400.00 Expires: October 16, 2020 Ward 3, District 2	WARRANTY	Extend for one (1) year or until the work is satisfactorily accomplished.
The Pines at River Chase Subdivision, Phase 1-S Amount: \$14,300.00 Expires: October 19, 2020 Ward 1, District 1	WARRANTY	Extend for one (1) year or until the work is satisfactorily accomplished.
Watercross Parkway (Timber Vehicular Bridge) Minor Subdivision #MS13-01-003 Amount: \$25,000.00 Expires: January 8, 2021 Ward 1, District 1	WARRANTY	Release
Watercross Parkway (Roadway) Minor Subdivision #MS13-01-003 Amount: \$48,600.00 Expires: January 8, 2021 Ward 1, District 1	WARRANTY	Release



ST. TAMMANY PARISH
MICHAEL WATSON
PARISH PRESIDENT

August 21, 2020

St. Tammany Parish Council
P.O. Box 628
Covington, LA 70434

Re: Watercross Parkway (Timber Vehicular Bridge) - Minor Subdivision #MS13-01-003
Warranty Obligation - \$25,000.00 - LOC #540

Honorable Council Members,

The Warranty Obligation in the amount of \$25,000.00 expires January 8, 2021, and is scheduled for review by the Parish Council at the September 9, 2020 meeting.

This office has inspected the site. All work covered by this Warranty Obligation is satisfactory.

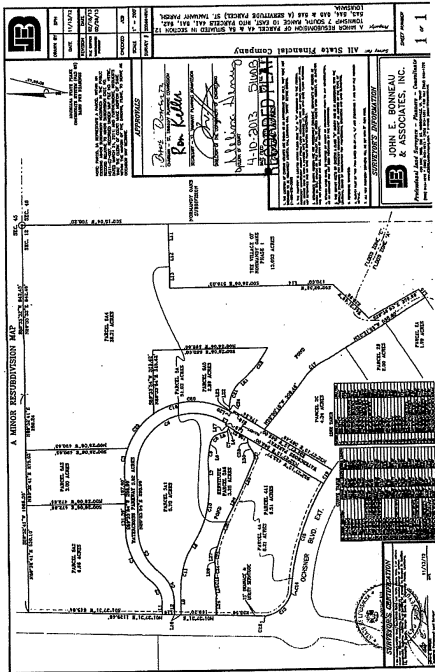
Therefore, it is recommended that the Warranty Obligation be released. This is a public access subdivision and the Parish is responsible for all maintenance.

Sincerely,


Jay B. Watson, P.E.
Parish Engineer

Attachments: Recorded Resubdivision Map No. 51608

- cc: Honorable Marty Dean
Mr. Ross Linder, AICP, PTP, CFM
Ms. Helen Lambert
Ms. Leslie Long
Ms. Tim Brown
Mr. Cary Meinard w/the Recorded Resubdivision Map
Mr. Shannon Davis w/the Recorded Resubdivision Map
Ms. Deborah Henton
Mr. Earl Wagner
Mr. Christopher Tisius, P.E.
Mr. Theodore Shields, P.E.
Mr. Jan Coburn, P.E.
Ms. Holly Thomas, P.E.
Mr. Truman Sharp, III
Mr. Joey Lebrano w/the Recorded Resubdivision Map
Ms. Tania Miller w/the Recorded Resubdivision Map
Ms. Jan Pavur
Mr. Bruce Wainner, All State Financial Company
Mr. Josh Wainner, All State Financial Company
Mr. James E. Powell, P.E., Kyle Associates, LLC



JOHN E. BONNEAU & ASSOCIATES, INC.
 10000 W. 10th Avenue, Suite 100, Denver, CO 80202
 Telephone: (303) 751-1100
 Fax: (303) 751-1101

ALL STATE FINANCIAL COMPANY
 A SUBSIDIARY OF FIRST AMERICAN FINANCIAL GROUP, INC.
 10000 W. 10th Avenue, Suite 100, Denver, CO 80202
 Telephone: (303) 751-1100
 Fax: (303) 751-1101

APPROVED PLAN
 4-10-2003
 [Signatures]

REVISIONS

NO.	DATE	DESCRIPTION
1	4-10-2003	AS SHOWN

PROPERTY

NO.	DATE	DESCRIPTION
1	4-10-2003	AS SHOWN

OWNER

NO.	DATE	DESCRIPTION
1	4-10-2003	AS SHOWN



ST. TAMMANY PARISH
MICHAEL COOPER
PARISH PRESIDENT

August 21, 2020

St. Tammany Parish Council
P.O. Box 628
Covington, LA 70434

Re: Watercross Parkway (Roadway) - Minor Subdivision #MS15-01-003
Warranty Obligation - \$48,600.00 - LOC #536

Honorable Council Members,

The Warranty Obligation in the amount of \$48,600.00 expires January 8, 2021 and is scheduled for review by the Parish Council at the September 3, 2020 meeting.

This office has inspected the site. All work covered by this Warranty Obligation is satisfactory.

Therefore, it is recommended that the Warranty Obligation be released. This is a public access subdivision and the Parish is responsible for all maintenance.

Sincerely,


Jay B. Watson, P.E.
Parish Engineer

Attachments: Recorded Resubdivision Map No. 51608

- cc: Honorable Marty Dean
Mr. Ross Linder, AICP, PTP, CFM
Ms. Helen Lambert
Ms. Leslie Long
Ms. Tim Brown
Mr. Cary Menard w/the Recorded Resubdivision Map
Mr. Shannon Davis w/the Recorded Resubdivision Map
Ms. Deborah Henton
Mr. Eric Wagner
Mr. Christopher Tinsie, P.E.
Mr. Thomas Reynolds, P.E.
Mr. Jason Cambre, P.E.
Ms. Holly Thomas, P.E.
Mr. Truman Sharp, III
Mr. Joey Lohrano w/the Recorded Resubdivision Map
Ms. Tania Miller w/the Recorded Resubdivision Map
Ms. Jan Pawur
Mr. Bruce Wainer, All State Financial Company
Mr. Josh Wainer, All State Financial Company
Mr. James E. Powell, P.E., Kyle Associates, LLC

