

ST. TAMMANY PARISH COUNCIL

ORDINANCE

ORDINANCE CALENDAR NO: 6816

ORDINANCE COUNCIL SERIES NO: _____

COUNCIL SPONSOR: LORINO/COOPER

PROVIDED BY: PUBLIC WORKS

INTRODUCED BY: MR. TOLEDANO

SECONDED BY: MR. DAVIS

ON THE 4 DAY OF NOVEMBER , 2021

AN ORDINANCE ACCEPTING FINALIZED SUBDIVISIONS INTO THE ROAD AND DRAINAGE INVENTORIES SPECIFICALLY GUSTE ISLAND ESTATES, PARCEL D-2, "THE OAKS" (WARD 1, DISTRICT 4)

WHEREAS, Developer/Owner(s) have dedicated the rights of way to the public as indicated on the finalized subdivision plat recorded in the Clerk of Court’s office.

THE PARISH OF ST. TAMMANY HEREBY ORDAINS: that all the area within the right-of-way, the road base, drainage ditches, culverts, laterals, canals and appurtenances thereunto belonging to or otherwise appertaining to the below indicated developments and authorized in the Resolution/Ordinance stated shall be incorporated in the Parish Selective Maintenance System.

BE IT FURTHER ORDAINED: that all parish regulations, policies, procedures, and operating methods pertain to the Parish Selective Maintenance System shall apply to the aforementioned developments:

Streets to be accepted into the maintenance system are named:

House Sparrow Dr. (R01M028) for a distance of 593 ft.

Scarlet Tanager Dr. (R01M029) for a distance of 593 ft.

Canary Dr. (R01M030) for a distance of 650 ft.

Fox Sparrow Loop (R01M031) for a distance of 782 ft.

REPEAL: All ordinances or parts of Ordinances in conflict herewith are hereby repealed.

SEVERABILITY: If any provision of this Ordinance shall be held to be invalid, such invalidity shall not affect other provisions herein which can be given effect without the invalid provision and to this end the provisions of this Ordinance are hereby declared to be severable.

EFFECTIVE DATE: This Ordinance shall become effective fifteen (15) days after adoption.

MOVED FOR ADOPTION BY: _____ SECONDED BY: _____

WHEREUPON THIS ORDINANCE WAS SUBMITTED TO A VOTE AND RESULTED IN THE FOLLOWING:

YEAS: _____

NAYS: _____

ABSTAIN: _____

ABSENT: _____

THIS ORDINANCE WAS DECLARED DULY ADOPTED AT A REGULAR MEETING OF THE PARISH COUNCIL ON THE 2 DAY OF DECEMBER , 2021 ; AND BECOMES ORDINANCE COUNCIL SERIES NO _____.

MICHAEL R. LORINO, JR. , COUNCIL CHAIRMAN

ATTEST:

KATRINA L. BUCKLEY, COUNCIL CLERK

MICHAEL B. COOPER, PARISH PRESIDENT

Published Introduction: OCTOBER 27 , 2021

Published Adoption: _____ , 2021

Delivered to Parish President: _____ , 2021 at _____

Returned to Council Clerk: _____ , 2021 at _____

ADMINISTRATIVE COMMENT

Reference No. _____

Administrative Department: Public Works

PURPOSE: To accept finalized subdivision into the road inventory.
Developer/Owners(s) have dedicated the rights of way to the public as indicated on the finalized subdivision plats recorded in the Clerk of Court's Office.

RECOMMENDATION: The Public Works Department recommends adoption.

ROAD INVENTORY #

R01M028

ST. TAMMANY ROAD INVENTORY
SUMMARY DATA

COMMUNITY Madisonville
(to be filled out by office personnel)

WARD 1

DISTRICT 4

CLOSEST STATE HWY 22

BARN 1515

ROAD NAME	GENERAL LOCATION	SECTION TOWNSHIP RANGE	STATION	ROADWAY DATA		REMARKS: INTERSECTION/ SURFACE TYPE/ STREET DIRECTION
				LENGTH	CONDITION SURFACE WIDTH	
House Sparrow Dr.	Euste Island Estates Parcel 0.2 "The Oaks"	20-7-10	0	593	C	runs south of of Fox Sparrow Loop
			593			ends at intersection with Scarlet Janasp Dr.
ROW: <u>600</u>						
MAP NO.:						
ORDINANCE NO.:						
ORDINANCE DATE:						

ROAD INVENTORY #
ReImo30

ST. TAMMANY ROAD INVENTORY
SUMMARY DATA
COMMUNITY Madisonville
(to be filled out by office personnel)

WARD 1
DISTRICT 4
CLOSEST STATE HWY 22
BARN 1515

ROAD NAME	GENERAL LOCATION	SECTION TOWNSHIP RANGE	ROADWAY DATA				REMARKS: INTERSECTION/ SURFACE TYPE/ STREET DIRECTION
			STATION	LENGTH	CONDITION		
					SURFACE	WIDTH	
<u>Canary Dr.</u>	<u>Guste Island Estates Parcel D-2 "The Oaks"</u>	<u>20-7-10</u>	<u>0</u>	<u>620</u>	<u>C</u>		<u>runs south off of Fox Sparrow Loop</u>
			<u>620</u>				<u>ends at intersection with Scarletanager</u>
ROW:	<u>60</u>						
MAP NO.:							
ORDINANCE NO.:							
ORDINANCE DATE:							

ROAD INVENTORY #

R01M031

ST. TAMMANY ROAD INVENTORY
SUMMARY DATA

COMMUNITY Madisonville
(to be filled out by office personnel)

WARD 1

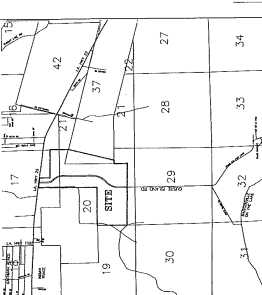
DISTRICT 4

CLOSEST STATE HWY 22

BARN 1515

ROAD NAME	GENERAL LOCATION	SECTION TOWNSHIP RANGE	ROADWAY DATA				REMARKS: INTERSECTION/SURFACE TYPE/ STREET DIRECTION
			STATION	LENGTH	CONDITION		
					SURFACE	WIDTH	
<u>Fox Sparrow Loop</u>	<u>Guste Island Estates</u>	<u>20-7-10</u>	<u>0</u>	<u>782</u>	<u>C</u>		<u>runs east off of Duarte Roland Rd</u>
	<u>Parcel 0-2</u>						
	<u>"The Oaks"</u>		<u>782</u>				<u>ends at phase line</u>
ROW: <u>60</u>							
MAP NO.:							
ORDINANCE NO.:							
ORDINANCE DATE:							

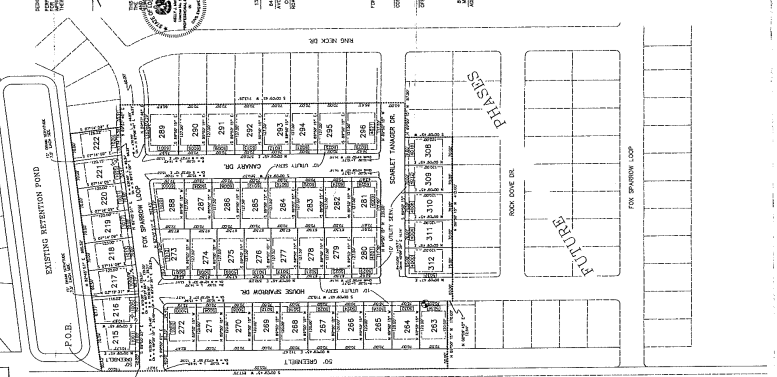
GUSTE ISLAND ESTATES, PARCEL D-2, "THE OAKS" SECTION 20, T-7-S, R-10-E, ST. TAMMANY PARISH, LOUISIANA.



VICINITY MAP

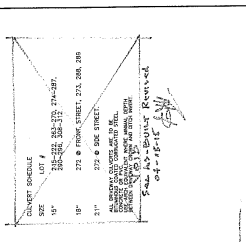
THIS MAP WAS PREPARED BY THE ENGINEER, STATE OF LOUISIANA, IN ACCORDANCE WITH THE PROVISIONS OF THE PUBLIC ASSISTANCE ACT OF 1936, AS AMENDED. THE ENGINEER HAS EXAMINED THE RECORD MAP AND THE SURVEY AND FINDS THAT THE SAME CONFORM TO THE REQUIREMENTS OF SAID ACT. THE ENGINEER'S OFFICE IS NOT RESPONSIBLE FOR THE ACCURACY OF THE INFORMATION CONTAINED HEREIN. THE ENGINEER'S OFFICE IS NOT A PARTY TO ANY AGREEMENT BETWEEN THE STATE AND THE ENGINEER. THE ENGINEER'S OFFICE IS NOT A PARTY TO ANY AGREEMENT BETWEEN THE STATE AND THE ENGINEER. THE ENGINEER'S OFFICE IS NOT A PARTY TO ANY AGREEMENT BETWEEN THE STATE AND THE ENGINEER. THE ENGINEER'S OFFICE IS NOT A PARTY TO ANY AGREEMENT BETWEEN THE STATE AND THE ENGINEER.

- ### GENERAL NOTES:
1. THE SURVEY WAS MADE BY THE ENGINEER, STATE OF LOUISIANA, ON OR ABOUT THE 15th DAY OF JANUARY, 1951.
 2. THE SURVEY WAS MADE BY THE ENGINEER, STATE OF LOUISIANA, ON OR ABOUT THE 15th DAY OF JANUARY, 1951.
 3. THE SURVEY WAS MADE BY THE ENGINEER, STATE OF LOUISIANA, ON OR ABOUT THE 15th DAY OF JANUARY, 1951.
 4. THE SURVEY WAS MADE BY THE ENGINEER, STATE OF LOUISIANA, ON OR ABOUT THE 15th DAY OF JANUARY, 1951.
 5. THE SURVEY WAS MADE BY THE ENGINEER, STATE OF LOUISIANA, ON OR ABOUT THE 15th DAY OF JANUARY, 1951.
 6. THE SURVEY WAS MADE BY THE ENGINEER, STATE OF LOUISIANA, ON OR ABOUT THE 15th DAY OF JANUARY, 1951.
 7. THE SURVEY WAS MADE BY THE ENGINEER, STATE OF LOUISIANA, ON OR ABOUT THE 15th DAY OF JANUARY, 1951.
 8. THE SURVEY WAS MADE BY THE ENGINEER, STATE OF LOUISIANA, ON OR ABOUT THE 15th DAY OF JANUARY, 1951.
 9. THE SURVEY WAS MADE BY THE ENGINEER, STATE OF LOUISIANA, ON OR ABOUT THE 15th DAY OF JANUARY, 1951.
 10. THE SURVEY WAS MADE BY THE ENGINEER, STATE OF LOUISIANA, ON OR ABOUT THE 15th DAY OF JANUARY, 1951.
 11. THE SURVEY WAS MADE BY THE ENGINEER, STATE OF LOUISIANA, ON OR ABOUT THE 15th DAY OF JANUARY, 1951.
 12. THE SURVEY WAS MADE BY THE ENGINEER, STATE OF LOUISIANA, ON OR ABOUT THE 15th DAY OF JANUARY, 1951.
 13. THE SURVEY WAS MADE BY THE ENGINEER, STATE OF LOUISIANA, ON OR ABOUT THE 15th DAY OF JANUARY, 1951.
 14. THE SURVEY WAS MADE BY THE ENGINEER, STATE OF LOUISIANA, ON OR ABOUT THE 15th DAY OF JANUARY, 1951.
 15. THE SURVEY WAS MADE BY THE ENGINEER, STATE OF LOUISIANA, ON OR ABOUT THE 15th DAY OF JANUARY, 1951.
 16. THE SURVEY WAS MADE BY THE ENGINEER, STATE OF LOUISIANA, ON OR ABOUT THE 15th DAY OF JANUARY, 1951.
 17. THE SURVEY WAS MADE BY THE ENGINEER, STATE OF LOUISIANA, ON OR ABOUT THE 15th DAY OF JANUARY, 1951.
 18. THE SURVEY WAS MADE BY THE ENGINEER, STATE OF LOUISIANA, ON OR ABOUT THE 15th DAY OF JANUARY, 1951.
 19. THE SURVEY WAS MADE BY THE ENGINEER, STATE OF LOUISIANA, ON OR ABOUT THE 15th DAY OF JANUARY, 1951.
 20. THE SURVEY WAS MADE BY THE ENGINEER, STATE OF LOUISIANA, ON OR ABOUT THE 15th DAY OF JANUARY, 1951.
 21. THE SURVEY WAS MADE BY THE ENGINEER, STATE OF LOUISIANA, ON OR ABOUT THE 15th DAY OF JANUARY, 1951.
 22. THE SURVEY WAS MADE BY THE ENGINEER, STATE OF LOUISIANA, ON OR ABOUT THE 15th DAY OF JANUARY, 1951.
 23. THE SURVEY WAS MADE BY THE ENGINEER, STATE OF LOUISIANA, ON OR ABOUT THE 15th DAY OF JANUARY, 1951.
 24. THE SURVEY WAS MADE BY THE ENGINEER, STATE OF LOUISIANA, ON OR ABOUT THE 15th DAY OF JANUARY, 1951.
 25. THE SURVEY WAS MADE BY THE ENGINEER, STATE OF LOUISIANA, ON OR ABOUT THE 15th DAY OF JANUARY, 1951.
 26. THE SURVEY WAS MADE BY THE ENGINEER, STATE OF LOUISIANA, ON OR ABOUT THE 15th DAY OF JANUARY, 1951.
 27. THE SURVEY WAS MADE BY THE ENGINEER, STATE OF LOUISIANA, ON OR ABOUT THE 15th DAY OF JANUARY, 1951.
 28. THE SURVEY WAS MADE BY THE ENGINEER, STATE OF LOUISIANA, ON OR ABOUT THE 15th DAY OF JANUARY, 1951.
 29. THE SURVEY WAS MADE BY THE ENGINEER, STATE OF LOUISIANA, ON OR ABOUT THE 15th DAY OF JANUARY, 1951.
 30. THE SURVEY WAS MADE BY THE ENGINEER, STATE OF LOUISIANA, ON OR ABOUT THE 15th DAY OF JANUARY, 1951.
 31. THE SURVEY WAS MADE BY THE ENGINEER, STATE OF LOUISIANA, ON OR ABOUT THE 15th DAY OF JANUARY, 1951.
 32. THE SURVEY WAS MADE BY THE ENGINEER, STATE OF LOUISIANA, ON OR ABOUT THE 15th DAY OF JANUARY, 1951.
 33. THE SURVEY WAS MADE BY THE ENGINEER, STATE OF LOUISIANA, ON OR ABOUT THE 15th DAY OF JANUARY, 1951.
 34. THE SURVEY WAS MADE BY THE ENGINEER, STATE OF LOUISIANA, ON OR ABOUT THE 15th DAY OF JANUARY, 1951.



THE ENGINEER HAS EXAMINED THE RECORD MAP AND THE SURVEY AND FINDS THAT THE SAME CONFORM TO THE REQUIREMENTS OF SAID ACT. THE ENGINEER'S OFFICE IS NOT RESPONSIBLE FOR THE ACCURACY OF THE INFORMATION CONTAINED HEREIN. THE ENGINEER'S OFFICE IS NOT A PARTY TO ANY AGREEMENT BETWEEN THE STATE AND THE ENGINEER. THE ENGINEER'S OFFICE IS NOT A PARTY TO ANY AGREEMENT BETWEEN THE STATE AND THE ENGINEER. THE ENGINEER'S OFFICE IS NOT A PARTY TO ANY AGREEMENT BETWEEN THE STATE AND THE ENGINEER.

DATE MADE	1951
BY	STATE OF LOUISIANA
APPROVED	[Signature]
TITLE	PLAT
SECTION	20
TOWNSHIP	T-7-S
RANGE	R-10-E



- ### NOTES:
1. THE SURVEY WAS MADE BY THE ENGINEER, STATE OF LOUISIANA, ON OR ABOUT THE 15th DAY OF JANUARY, 1951.
 2. THE SURVEY WAS MADE BY THE ENGINEER, STATE OF LOUISIANA, ON OR ABOUT THE 15th DAY OF JANUARY, 1951.
 3. THE SURVEY WAS MADE BY THE ENGINEER, STATE OF LOUISIANA, ON OR ABOUT THE 15th DAY OF JANUARY, 1951.
 4. THE SURVEY WAS MADE BY THE ENGINEER, STATE OF LOUISIANA, ON OR ABOUT THE 15th DAY OF JANUARY, 1951.

RECORDED PLAT

GUSTE ISLAND ESTATES, PARCEL D-2, "THE OAKS" SECTION 20, T-7-S, R-10-E, ST. TAMMANY PARISH, LOUISIANA.	
REGISTERED	KELLY MARSH & ASSOCIATES 205 CANAL ST., SUITE 1100 MONROE, LA.
DATE	1951
BY	STATE OF LOUISIANA
APPROVED	[Signature]

