

ST. TAMMANY PARISH COUNCIL

ORDINANCE

ORDINANCE CALENDAR NO: 6655 ORDINANCE COUNCIL SERIES NO: _____

COUNCIL SPONSOR: LORINO/COOPER PROVIDED BY: PUBLIC WORKS

INTRODUCED BY: MR. CANULETTE SECONDED BY: MR. DEAN

ON THE 6 DAY OF MAY , 2021

ORDINANCE ESTABLISHING A NO PARKING ZONE ON GUSTE ISLAND RD. (R01M016) WARD 1, DISTRICT 4

SEE ATTACHED MAP FOR PLACEMENT OF SIGNS

WHEREAS, St. Tammany Parish Government is charged with protecting the safety and welfare of citizens of St. Tammany Parish.

THE PARISH OF ST. TAMMANY HEREBY ORDAINS: that

SECTION I: A "No Parking" zone is hereby established on Guste Island Rd. (RO1M016) See attached map for placement of signs

SECTION II: The Parish Department of Public Works is directed to post the appropriate signage at the location.

REPEAL: All ordinances or parts of Ordinances in conflict herewith are hereby repealed.

SEVERABILITY: If any provision of this Ordinance shall be held to be invalid, such invalidity shall not affect other provisions herein which can be given effect without the invalid provision and to this end the provisions of this Ordinance are hereby declared to be severable.

EFFECTIVE DATE: This Ordinance shall become effective fifteen (15) days after adoption.

MOVED FOR ADOPTION BY: _____ SECONDED BY: _____

WHEREUPON THIS ORDINANCE WAS SUBMITTED TO A VOTE AND RESULTED IN THE FOLLOWING:

YEAS: _____

NAYS: _____

ABSTAIN: _____

ABSENT: _____

THIS ORDINANCE WAS DECLARED DULY ADOPTED AT A REGULAR MEETING OF THE PARISH COUNCIL ON THE 6 DAY OF MAY , 2021 ; AND BECOMES ORDINANCE COUNCIL SERIES NO _____.

MICHAEL R. LORINO, JR. , COUNCIL CHAIRMAN

ATTEST:

KATRINA L. BUCKLEY, COUNCIL CLERK

MICHAEL B. COOPER, PARISH PRESIDENT

Published Introduction: April 28 , 2021

Published Adoption: _____, 2021

Delivered to Parish President: _____, 2021 at _____

Returned to Council Clerk: _____, 2021 at _____

ADMINISTRATIVE COMMENT

Reference No. _____

Administrative Department: Public Works

PURPOSE: No Parking signs have been requested by the Councilman for the safety of vehicular traffic.

RECOMMENDATION: The Public Works Department recommends adoption.



ST. TAMMANY PARISH

MICHAEL B. COOPER
PARISH PRESIDENT

Date: March 22, 2021

To: Joey Lobrano
Right Of Way Coordinator
Department of Public Works

From: Mitchell Roniger
Project Engineer

Council Ordinance Required:

Yes: **X**

No:

Re: District 4
Signage Installation
Guste Island Rd. 1-M-16
4- NO PARKING signs
4- NO BOAT LAUNCH signs
12- NO PARKING DOUBLE ARROW signs
12- NO BOAT LAUNCH DOUBLE ARROW signs

The Department of Engineering recommends the installation of signage to be installed in District 4.

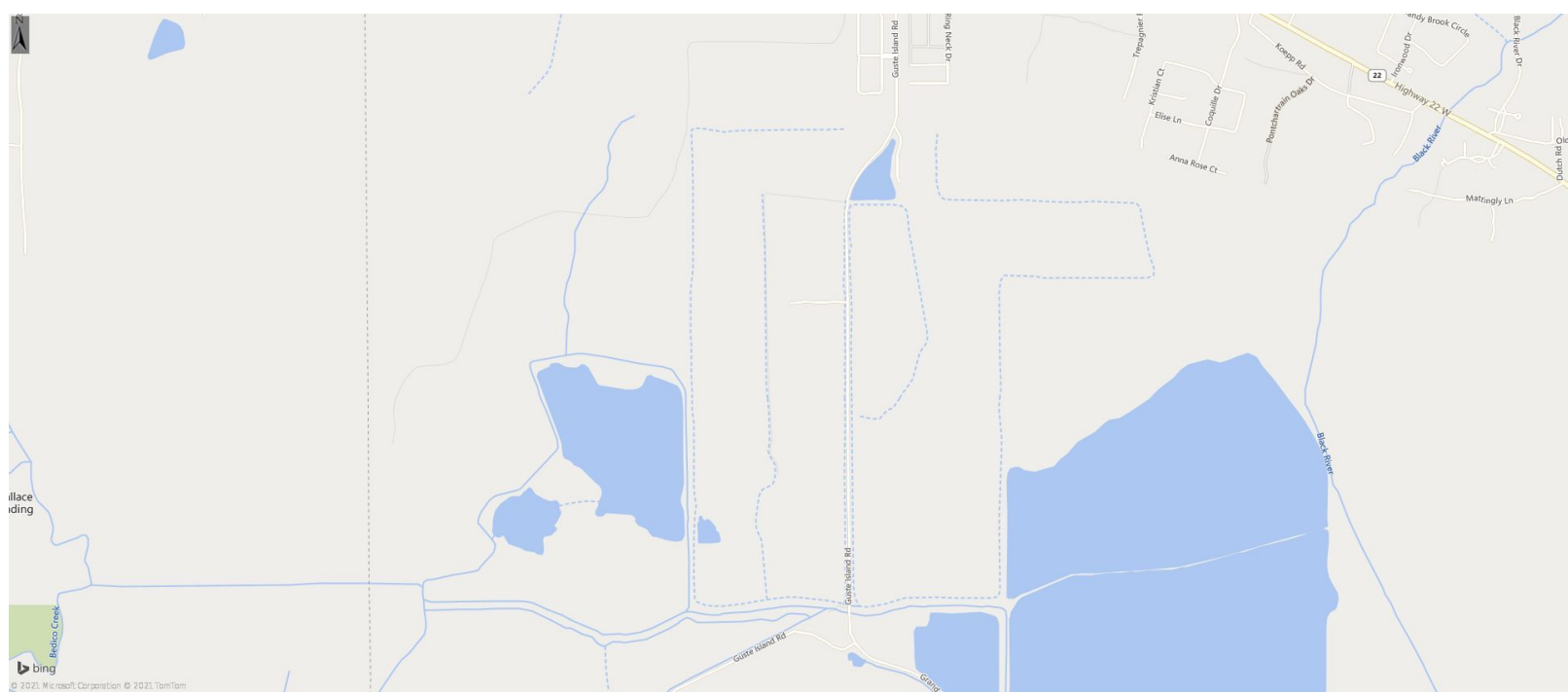
As per MUTCD, when signs with arrows are used to indicate the restricted parking zones, the signs with the arrows should be set at an angle of not less than 30 degrees and not more than 45 degrees with the line of traffic flow in order to be visible to approaching traffic.

1. Install NO PARKING sign and NO BOAT LAUNCH sign on Guste Island Rd approx. 4,400' from intersection of Guste Island Rd. and Hwy 22.
2. Install NO PARKING sign and NO BOAT LAUNCH sign on Guste Island Rd. across from #1.
3. Install NO PARKING DOUBLE ARROW sign and NO BOAT LAUNCH DOUBLE ARROW sign, approx. 2,000' from #1.
4. Install NO PARKING DOUBLE ARROW sign and NO BOAT LAUNCH DOUBLE ARROW sign across from #3.
5. Install NO PARKING DOUBLE ARROW sign and NO BOAT LAUNCH DOUBLE ARROW sign, approx. 2,000' from #3.
6. Install NO PARKING DOUBLE ARROW sign and NO BOAT LAUNCH DOUBLE ARROW sign across from #5.
7. Install NO PARKING DOUBLE ARROW sign and NO BOAT LAUNCH DOUBLE ARROW sign, approx. 2,000' from #5.
8. Install NO PARKING DOUBLE ARROW sign and NO BOAT LAUNCH DOUBLE ARROW sign across from #7.
9. Install NO PARKING DOUBLE ARROW sign and NO BOAT LAUNCH DOUBLE ARROW sign at bridge.

10. Install NO PARKING DOUBLE ARROW sign and NO BOAT LAUNCH DOUBLE ARROW sign at bridge.
11. Install NO PARKING DOUBLE ARROW sign and NO BOAT LAUNCH DOUBLE ARROW sign, approx. 800' from end of bridge.
12. Install NO PARKING DOUBLE ARROW sign and NO BOAT LAUNCH DOUBLE ARROW sign across from #11.
13. Install NO PARKING DOUBLE ARROW sign and NO BOAT LAUNCH DOUBLE ARROW sign, approx. 1,500' from #11.
14. Install NO PARKING DOUBLE ARROW sign and NO BOAT LAUNCH DOUBLE ARROW sign across from #13.
15. Install NO PARKING sign and NO BOAT LAUNCH sign on Guste Island Rd at end of Parish maintained road.
16. Install NO PARKING sign and NO BOAT LAUNCH sign on Guste Island Rd across from #15.

Cc: Councilman Michael Lorino, Jr.
Jay Watson, P.E., Director of Engineering

Guste Island Signage (North)



Guste Island No Parking No Launch Signs

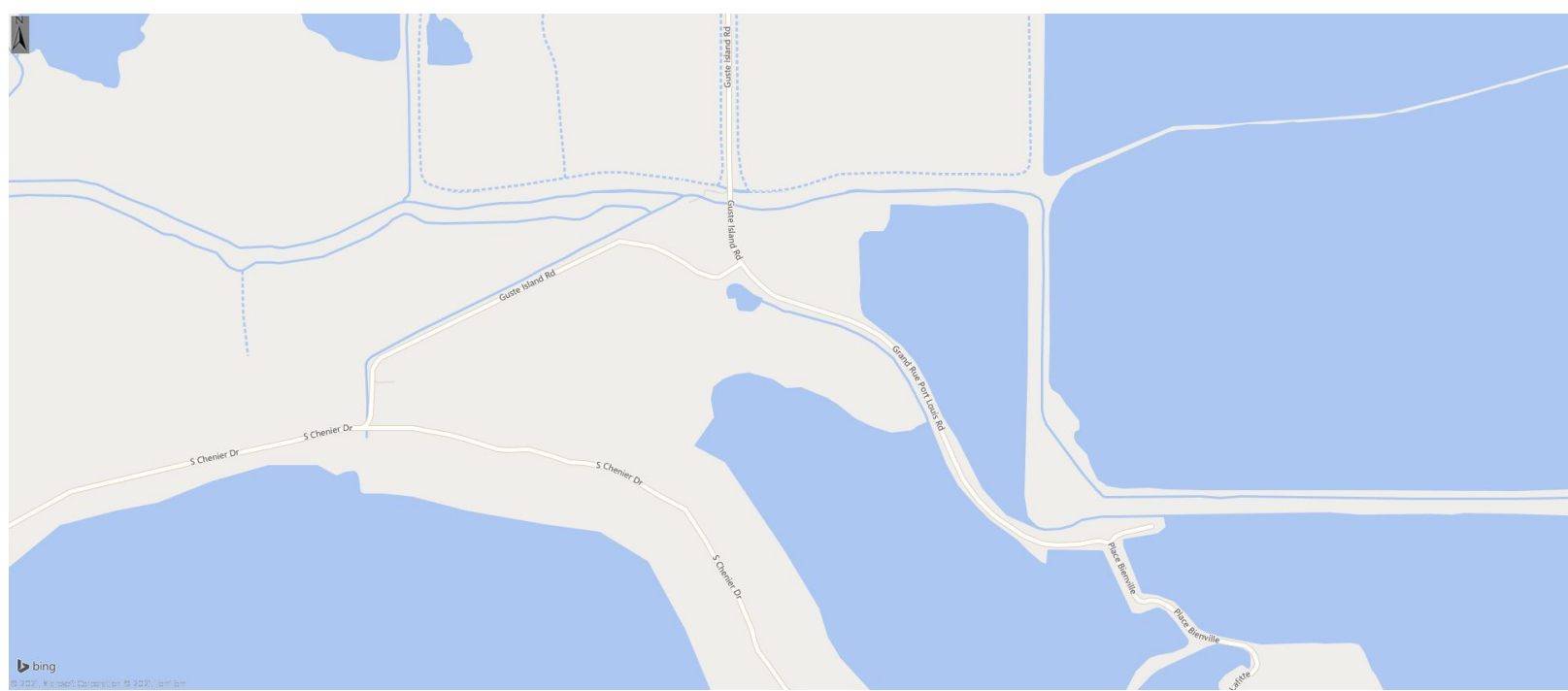
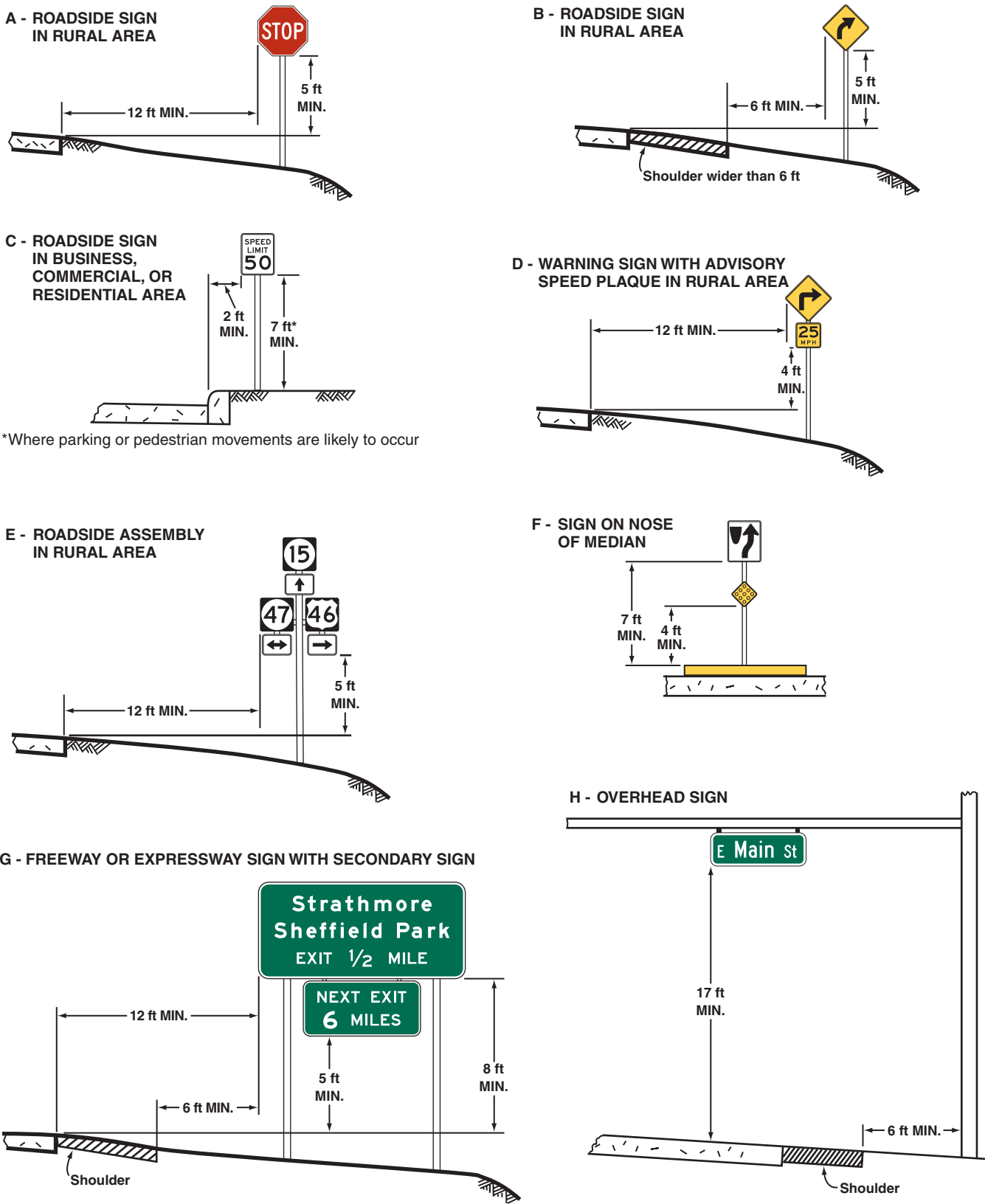


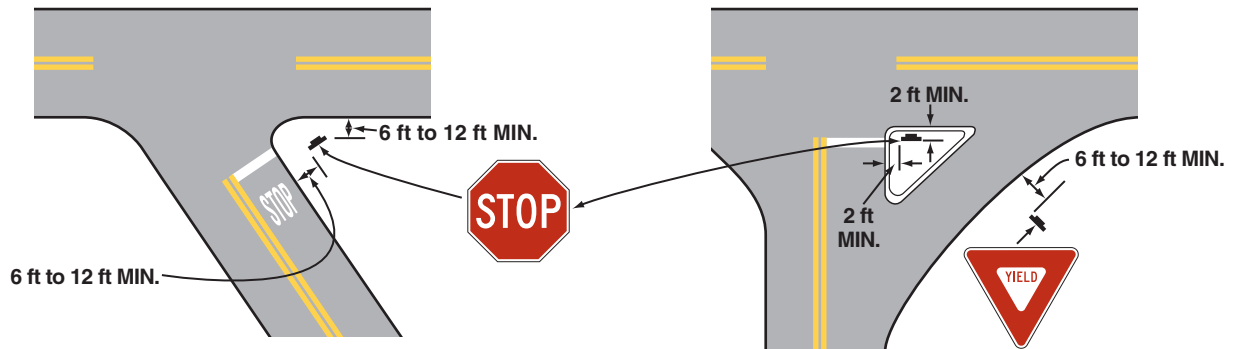
Figure 2A-2. Examples of Heights and Lateral Locations of Sign Installations



*Where parking or pedestrian movements are likely to occur

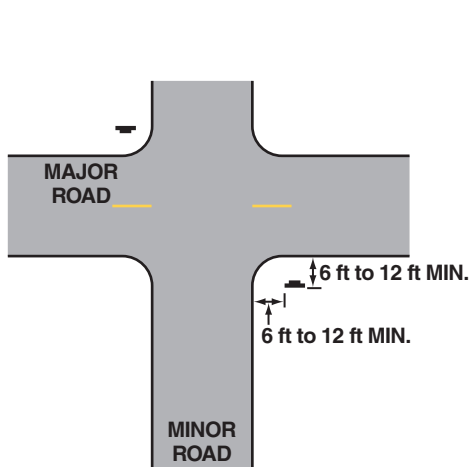
Note:
See Section 2A.19 for reduced lateral offset distances that may be used in areas where lateral offsets are limited, and in business, commercial, or residential areas where sidewalk width is limited or where existing poles are close to the curb.

Figure 2A-3. Examples of Locations for Some Typical Signs at Intersections

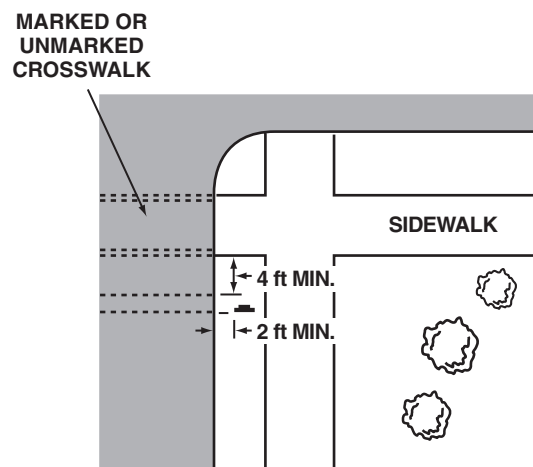


A - ACUTE ANGLE INTERSECTION

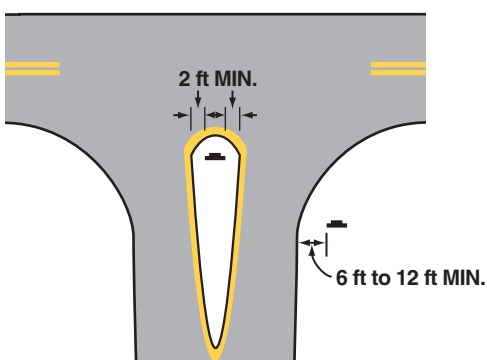
B - CHANNELIZED INTERSECTION



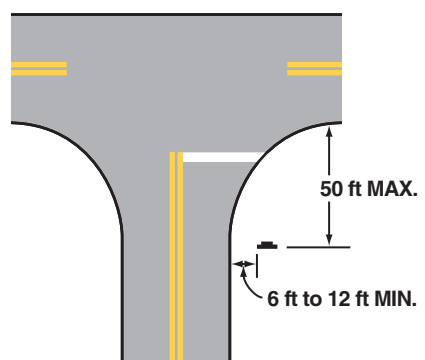
C - MINOR CROSSROAD



D - URBAN INTERSECTION



E - DIVISIONAL ISLAND



F - WIDE THROAT INTERSECTION

Note: Lateral offset is a minimum of 6 feet measured from the edge of the shoulder, or 12 feet measured from the edge of the traveled way. See Section 2A.19 for lower minimums that may be used in urban areas, or where lateral offset space is limited.