

ST. TAMMANY PARISH COUNCIL

ORDINANCE

ORDINANCE CALENDAR NO: 6811 ORDINANCE COUNCIL SERIES NO: \_\_\_\_\_

COUNCIL SPONSOR: LORINO/COOPER PROVIDED BY: PUBLIC WORKS

INTRODUCED BY: \_\_\_\_\_ SECONDED BY: \_\_\_\_\_

ON THE 4 DAY OF NOVEMBER , 2021

AN ORDINANCE ACCEPTING FINALIZED SUBDIVISIONS INTO THE ROAD AND DRAINAGE INVENTORIES, SPECIFICALLY GRAND OAKS SUBDIVISION PH. 2A-2 AND PH. 2-C (WARD 1, DISTRICT 1)

WHEREAS, Developer/Owner(s) have dedicated the rights of ways to the public as indicated on the finalized subdivision plat recorded in the Clerk of Court’s office.

THE PARISH OF ST. TAMMANY HEREBY ORDAINS: that all the area within the right-of-way, the road base, drainage ditches, culverts, laterals, canals and appurtenances belonging to or otherwise appertaining to the below indicated developments and authorized in the Resolution/Ordinance stated shall be incorporated in the Parish Maintenance System.

BE IT FURTHER ORDAINED: that all parish regulations, policies, procedures, and operating methods pertain to the Parish Selective Maintenance System shall apply to the aforementioned developments:

Streets to be accepted into the maintenance system are named:

Silver Oaks Dr., Ph. 2A-2 for a distance of 277 feet

Grand Oaks Dr., Ph. 2-C for a distance of 1,790 feet

Silver Oaks Dr., Ph. 2-C for a distance of 792 feet

REPEAL: All ordinances or parts of Ordinances in conflict herewith are hereby repealed.

SEVERABILITY: If any provision of this Ordinance shall be held to be invalid, such invalidity shall not affect other provisions herein which can be given effect without the invalid provision and to this end the provisions of this Ordinance are hereby declared to be severable.

EFFECTIVE DATE: This Ordinance shall become effective fifteen (15) days after adoption.

MOVED FOR ADOPTION BY: \_\_\_\_\_ SECONDED BY: \_\_\_\_\_

WHEREUPON THIS ORDINANCE WAS SUBMITTED TO A VOTE AND RESULTED IN THE FOLLOWING:

YEAS: \_\_\_\_\_

NAYS: \_\_\_\_\_

ABSTAIN: \_\_\_\_\_

ABSENT: \_\_\_\_\_

THIS ORDINANCE WAS DECLARED DULY ADOPTED AT A REGULAR MEETING OF THE PARISH COUNCIL ON THE 4 DAY OF NOVEMBER , 2021 ; AND BECOMES ORDINANCE COUNCIL SERIES NO \_\_\_\_\_.

\_\_\_\_\_  
MICHAEL R. LORINO, JR. , COUNCIL CHAIRMAN

ATTEST:

\_\_\_\_\_  
KATRINA L. BUCKLEY, COUNCIL CLERK

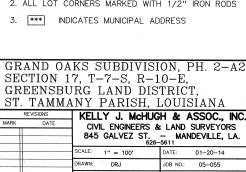
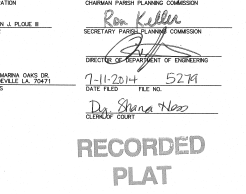
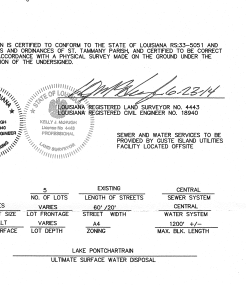
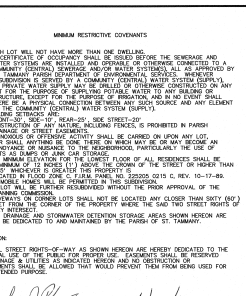
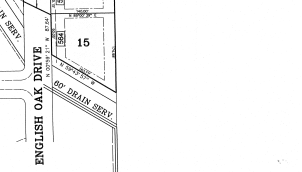
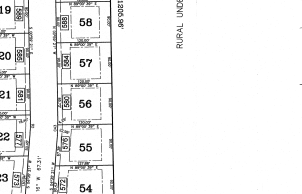
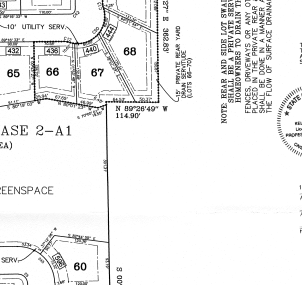
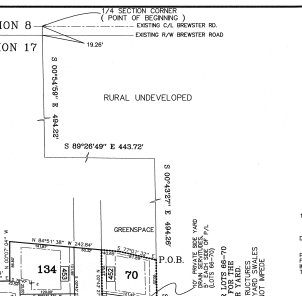
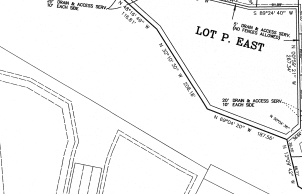
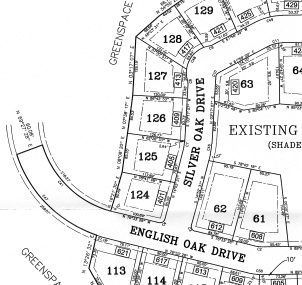
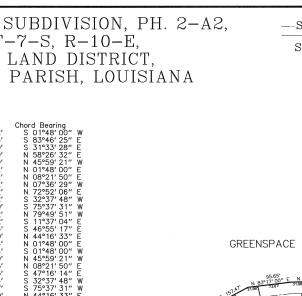
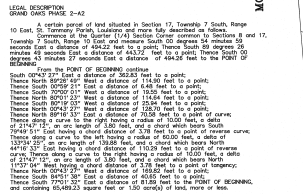
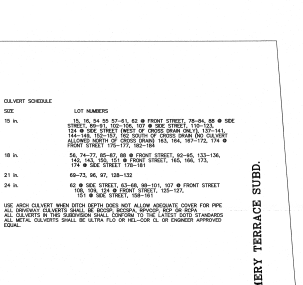
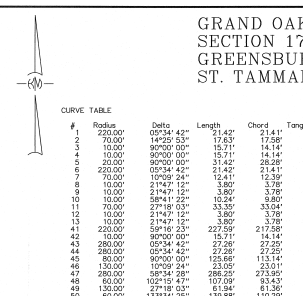
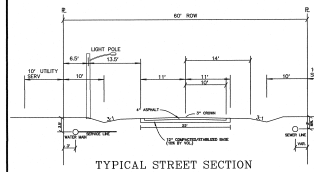
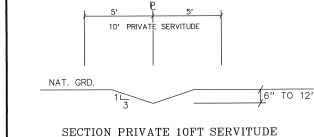
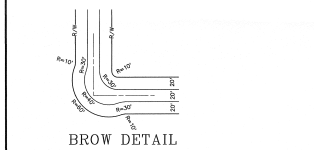
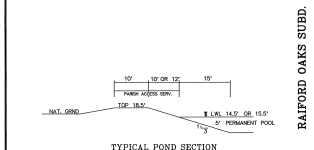
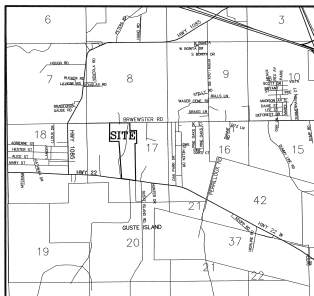
\_\_\_\_\_  
MICHAEL B. COOPER, PARISH PRESIDENT

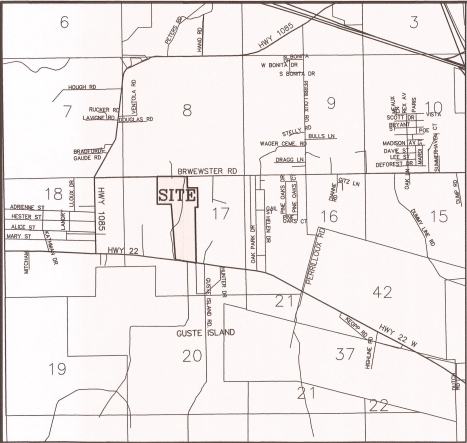
Published Introduction: OCTOBER 27 , 2021

Published Adoption: \_\_\_\_\_, 2021

Delivered to Parish President: \_\_\_\_\_, 2021 at \_\_\_\_\_

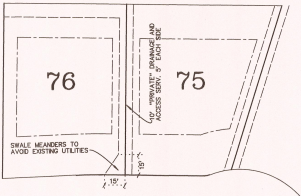
Returned to Council Clerk: \_\_\_\_\_, 2021 at \_\_\_\_\_





VICINITY MAP

GRAND OAKS SUBDIVISION, PH. 2-C,  
SECTION 17, T-7-S, R-10-E,  
ST. TAMMANY PARISH, LOUISIANA

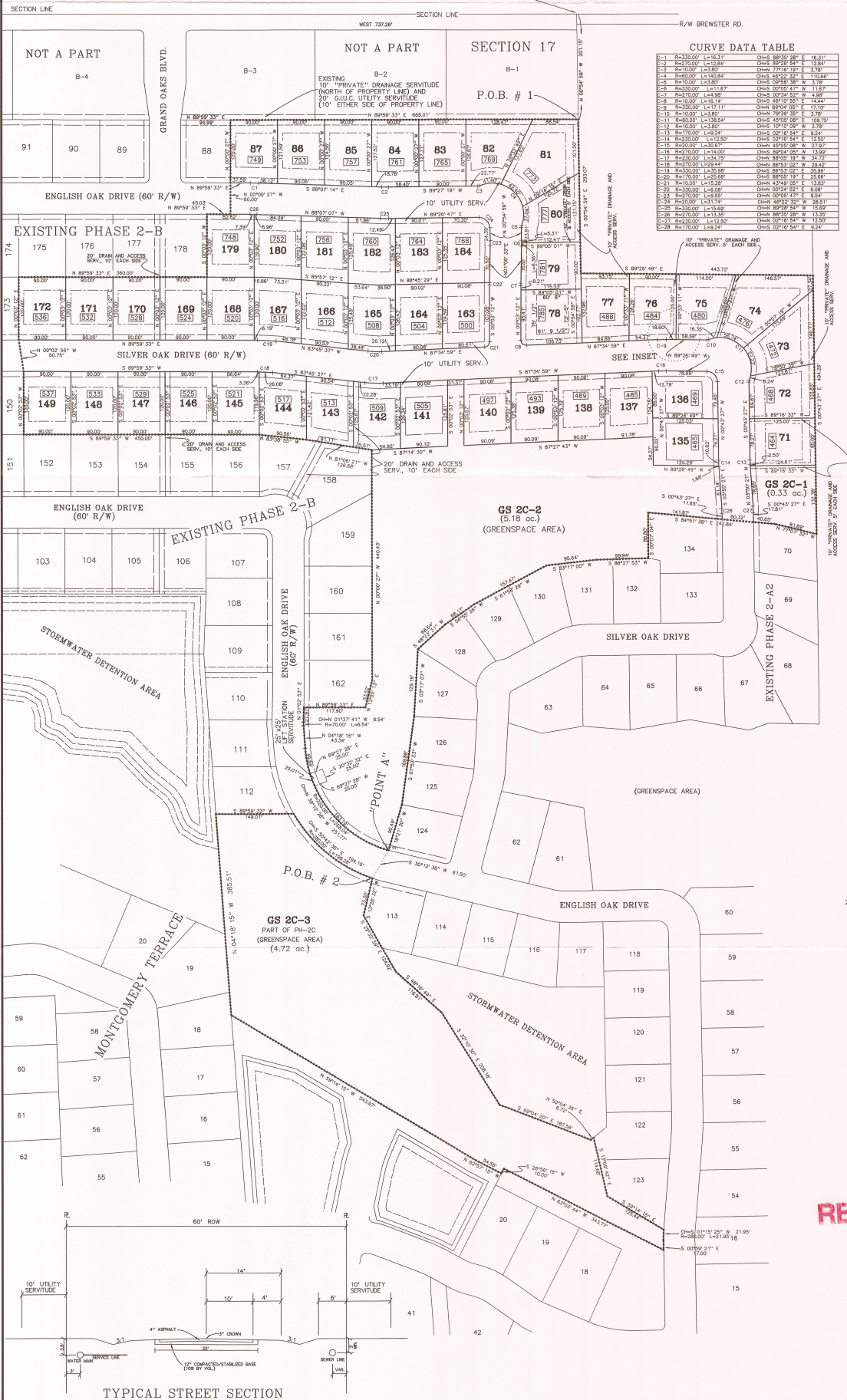


INSET  
(DETAIL OF PRIVATE DRAINAGE  
SERVICE FOR LOTS 75 & 76)

1/4 SECTION CORNER

SECTION 8

BREWSTER ROAD



- MINIMUM RESTRICTIVE COVENANTS
- EACH LOT WILL NOT HAVE MORE THAN ONE DWELLING.
  - NO CERTIFICATE OF OCCUPANCY SHALL BE ISSUED BEFORE THE SEWERAGE AND WATER SYSTEMS ARE INSTALLED AND OPERABLE OR OTHERWISE CONNECTED TO A COMMUNITY (CENTRAL) SEWERAGE AND/OR WATER SYSTEMS. ALL AS APPROVED BY ST. TAMMANY PARISH DEPARTMENT OF ENVIRONMENTAL SERVICES. WHENEVER A SUBDIVISION IS SERVED BY A CENTRAL WATER SYSTEM (SUPPLY), NO PRIVATE WATER SUPPLY MAY BE DRILLED OR OTHERWISE CONSTRUCTED ON ANY LOT FOR THE PURPOSE OF SUPPLYING POTABLE WATER TO ANY BUILDING OR STRUCTURE, EXCEPT FOR THE PURPOSE OF IRRIGATION, AND IN NO EVENT SHALL THERE BE A PHYSICAL CONNECTION BETWEEN ANY SUCH SOURCE AND ANY ELEMENT OF THE COMMUNITY (CENTRAL) WATER SYSTEM (SUPPLY).
  - BUILDING SETBACKS ARE:
    - FRONT-30' SIDE-10' REAR-25' SIDE STREET-20'
  - CONSTRUCTION OF ANY NATURE, INCLUDING FENCES, IS PROHIBITED IN PARISH DRAINAGE OR STREET EASEMENTS, FENCES OR DRIVEWAYS CONSTRUCTED IN PRIVATE DRAINAGE SERVICES SHALL BE DONE IN A MANNER WHICH DOES NOT IMPEDE FLOW OF SURFACE DRAINAGE.
  - NO NOISY OR OFFENSIVE ACTIVITY SHALL BE CARRIED ON UPON ANY LOT.
  - NO SHALL ANYTHING BE DONE OR PERFORMED ON WHICH MAY BE OR MAY BECOME AN ANNOYANCE OR NUISANCE TO THE NEIGHBORHOOD, PARTICULARLY THE USE OF.
  - THE MINIMUM ELEVATION FOR THE LOWEST FLOOR OF ALL RESIDENCES SHALL BE A MINIMUM OF 12 INCHES (1') ABOVE THE CROWN OF THE STREET OR HIGHER THAN 18.5' WHICHEVER IS GREATER THIS PROPERTY IS.
  - CONSTRUCTION OF ANY NATURE, INCLUDING FENCES, IS PROHIBITED IN PARISH DRAINAGE OR STREET EASEMENTS, FENCES OR DRIVEWAYS CONSTRUCTED IN PRIVATE DRAINAGE SERVICES SHALL BE DONE IN A MANNER WHICH DOES NOT IMPEDE FLOW OF SURFACE DRAINAGE.
  - NO MOBILE HOMES WILL BE PERMITTED IN THIS SUBDIVISION.
  - NO LOT WILL BE FURTHER REDIVIDED WITHOUT THE PRIOR APPROVAL OF THE PLANNING COMMISSION.
  - DRIVEWAYS ON CORNER LOTS SHALL NOT BE LOCATED ANY CLOSER THAN SIXTY (60') FEET FROM THE CORNER OF THE PROPERTY WHERE THE SAID TWO STREET RIGHTS OF WAY INTERSECT.
  - ALL STREET RIGHTS-OF-WAY AS SHOWN HEREON ARE HEREBY DEDICATED TO THE PERPETUAL USE OF THE PUBLIC FOR PROPER USE. EASEMENTS SHALL BE RESERVED FOR DRAINAGE & UTILITIES AS INDICATED HEREON AND NO OBSTRUCTION OR IMPROVEMENTS SHALL BE ALLOWED THAT WOULD PREVENT THEM FROM BEING USED FOR THEIR INTENDED PURPOSE.
  - THE STREET NAME SIGNS, TRAFFIC CONTROL SIGNAGE AND THE MOUNTING POLES PLACED WITHIN THIS SUBDIVISION ARE TO BE OWNED AND MAINTAINED BY THE HOMEOWNERS ASSOCIATION.
- DEDICATION:  
ALL STREET RIGHTS-OF-WAY AS SHOWN HEREON ARE HEREBY DEDICATED TO THE PERPETUAL USE OF THE PUBLIC FOR PROPER USE. EASEMENTS SHALL BE RESERVED FOR DRAINAGE & UTILITIES AS INDICATED HEREON AND NO OBSTRUCTION OR IMPROVEMENTS SHALL BE ALLOWED THAT WOULD PREVENT THEM FROM BEING USED FOR THEIR INTENDED PURPOSE.
- John J. Ploie II* 11/6/17  
OWNER DATE

THIS PLAN IS CERTIFIED TO CONFORM TO THE STATE OF LOUISIANA RS-33-5051 AND THE LAWS AND ORDINANCES OF ST. TAMMANY PARISH TO BE CORRECT AND IN ACCORDANCE WITH A PHYSICAL SURVEY MADE ON THE GROUND UNDER THE SUPERVISION OF THE UNDERSIGNED.



**CURVE DATA TABLE**

STATION	CHORD BEARING	CHORD LENGTH	CHORD BEARING	CHORD LENGTH
1+00.00	S 89°59'33" E	12.84	CH 89°59'33" E	12.84
1+12.84	S 89°59'33" E	12.84	CH 89°59'33" E	12.84
1+25.68	S 89°59'33" E	12.84	CH 89°59'33" E	12.84
1+38.52	S 89°59'33" E	12.84	CH 89°59'33" E	12.84
1+51.36	S 89°59'33" E	12.84	CH 89°59'33" E	12.84
1+64.20	S 89°59'33" E	12.84	CH 89°59'33" E	12.84
1+77.04	S 89°59'33" E	12.84	CH 89°59'33" E	12.84
1+89.88	S 89°59'33" E	12.84	CH 89°59'33" E	12.84
2+02.72	S 89°59'33" E	12.84	CH 89°59'33" E	12.84
2+15.56	S 89°59'33" E	12.84	CH 89°59'33" E	12.84
2+28.40	S 89°59'33" E	12.84	CH 89°59'33" E	12.84
2+41.24	S 89°59'33" E	12.84	CH 89°59'33" E	12.84
2+54.08	S 89°59'33" E	12.84	CH 89°59'33" E	12.84
2+66.92	S 89°59'33" E	12.84	CH 89°59'33" E	12.84
2+79.76	S 89°59'33" E	12.84	CH 89°59'33" E	12.84
2+92.60	S 89°59'33" E	12.84	CH 89°59'33" E	12.84
3+05.44	S 89°59'33" E	12.84	CH 89°59'33" E	12.84
3+18.28	S 89°59'33" E	12.84	CH 89°59'33" E	12.84
3+31.12	S 89°59'33" E	12.84	CH 89°59'33" E	12.84
3+43.96	S 89°59'33" E	12.84	CH 89°59'33" E	12.84
3+56.80	S 89°59'33" E	12.84	CH 89°59'33" E	12.84
4+09.64	S 89°59'33" E	12.84	CH 89°59'33" E	12.84
4+22.48	S 89°59'33" E	12.84	CH 89°59'33" E	12.84
4+35.32	S 89°59'33" E	12.84	CH 89°59'33" E	12.84
4+48.16	S 89°59'33" E	12.84	CH 89°59'33" E	12.84
4+61.00	S 89°59'33" E	12.84	CH 89°59'33" E	12.84
4+73.84	S 89°59'33" E	12.84	CH 89°59'33" E	12.84
4+86.68	S 89°59'33" E	12.84	CH 89°59'33" E	12.84
4+99.52	S 89°59'33" E	12.84	CH 89°59'33" E	12.84
5+12.36	S 89°59'33" E	12.84	CH 89°59'33" E	12.84
5+25.20	S 89°59'33" E	12.84	CH 89°59'33" E	12.84
5+38.04	S 89°59'33" E	12.84	CH 89°59'33" E	12.84
5+50.88	S 89°59'33" E	12.84	CH 89°59'33" E	12.84
5+63.72	S 89°59'33" E	12.84	CH 89°59'33" E	12.84
5+76.56	S 89°59'33" E	12.84	CH 89°59'33" E	12.84
5+89.40	S 89°59'33" E	12.84	CH 89°59'33" E	12.84
6+02.24	S 89°59'33" E	12.84	CH 89°59'33" E	12.84
6+15.08	S 89°59'33" E	12.84	CH 89°59'33" E	12.84
6+27.92	S 89°59'33" E	12.84	CH 89°59'33" E	12.84
6+40.76	S 89°59'33" E	12.84	CH 89°59'33" E	12.84
6+53.60	S 89°59'33" E	12.84	CH 89°59'33" E	12.84
6+66.44	S 89°59'33" E	12.84	CH 89°59'33" E	12.84
6+79.28	S 89°59'33" E	12.84	CH 89°59'33" E	12.84
6+92.12	S 89°59'33" E	12.84	CH 89°59'33" E	12.84
7+04.96	S 89°59'33" E	12.84	CH 89°59'33" E	12.84
7+17.80	S 89°59'33" E	12.84	CH 89°59'33" E	12.84
7+30.64	S 89°59'33" E	12.84	CH 89°59'33" E	12.84
7+43.48	S 89°59'33" E	12.84	CH 89°59'33" E	12.84
7+56.32	S 89°59'33" E	12.84	CH 89°59'33" E	12.84
7+69.16	S 89°59'33" E	12.84	CH 89°59'33" E	12.84
7+82.00	S 89°59'33" E	12.84	CH 89°59'33" E	12.84
7+94.84	S 89°59'33" E	12.84	CH 89°59'33" E	12.84
8+07.68	S 89°59'33" E	12.84	CH 89°59'33" E	12.84
8+20.52	S 89°59'33" E	12.84	CH 89°59'33" E	12.84
8+33.36	S 89°59'33" E	12.84	CH 89°59'33" E	12.84
8+46.20	S 89°59'33" E	12.84	CH 89°59'33" E	12.84
8+59.04	S 89°59'33" E	12.84	CH 89°59'33" E	12.84
9+11.88	S 89°59'33" E	12.84	CH 89°59'33" E	12.84
9+24.72	S 89°59'33" E	12.84	CH 89°59'33" E	12.84
9+37.56	S 89°59'33" E	12.84	CH 89°59'33" E	12.84
9+50.40	S 89°59'33" E	12.84	CH 89°59'33" E	12.84
9+63.24	S 89°59'33" E	12.84	CH 89°59'33" E	12.84
9+76.08	S 89°59'33" E	12.84	CH 89°59'33" E	12.84
9+88.92	S 89°59'33" E	12.84	CH 89°59'33" E	12.84
10+01.76	S 89°59'33" E	12.84	CH 89°59'33" E	12.84
10+14.60	S 89°59'33" E	12.84	CH 89°59'33" E	12.84
10+27.44	S 89°59'33" E	12.84	CH 89°59'33" E	12.84
10+40.28	S 89°59'33" E	12.84	CH 89°59'33" E	12.84
10+53.12	S 89°59'33" E	12.84	CH 89°59'33" E	12.84
10+65.96	S 89°59'33" E	12.84	CH 89°59'33" E	12.84
10+78.80	S 89°59'33" E	12.84	CH 89°59'33" E	12.84
10+91.64	S 89°59'33" E	12.84	CH 89°59'33" E	12.84
11+04.48	S 89°59'33" E	12.84	CH 89°59'33" E	12.84
11+17.32	S 89°59'33" E	12.84	CH 89°59'33" E	12.84
11+30.16	S 89°59'33" E	12.84	CH 89°59'33" E	12.84
11+43.00	S 89°59'33" E	12.84	CH 89°59'33" E	12.84
11+55.84	S 89°59'33" E	12.84	CH 89°59'33" E	12.84
12+08.68	S 89°59'33" E	12.84	CH 89°59'33" E	12.84
12+21.52	S 89°59'33" E	12.84	CH 89°59'33" E	12.84
12+34.36	S 89°59'33" E	12.84	CH 89°59'33" E	12.84
12+47.20	S 89°59'33" E	12.84	CH 89°59'33" E	12.84
12+60.04	S 89°59'33" E	12.84	CH 89°59'33" E	12.84
12+72.88	S 89°59'33" E	12.84	CH 89°59'33" E	12.84
12+85.72	S 89°59'33" E	12.84	CH 89°59'33" E	12.84
12+98.56	S 89°59'33" E	12.84	CH 89°59'33" E	12.84
13+11.40	S 89°59'33" E	12.84	CH 89°59'33" E	12.84
13+24.24	S 89°59'33" E	12.84	CH 89°59'33" E	12.84
13+37.08	S 89°59'33" E	12.84	CH 89°59'33" E	12.84
13+49.92	S 89°59'33" E	12.84	CH 89°59'33" E	12.84
13+62.76	S 89°59'33" E	12.84	CH 89°59'33" E	12.84
13+75.60	S 89°59'33" E	12.84	CH 89°59'33" E	12.84
13+88.44	S 89°59'33" E	12.84	CH 89°59'33" E	12.84
14+01.28	S 89°59'33" E	12.84	CH 89°59'33" E	12.84
14+14.12	S 89°59'33" E	12.84	CH 89°59'33" E	12.84
14+26.96	S 89°59'33" E	12.84	CH 89°59'33" E	12.84
14+39.80	S 89°59'33" E	12.84	CH 89°59'33" E	12.84
14+52.64	S 89°59'33" E	12.84	CH 89°59'33" E	12.84
14+65.48	S 89°59'33" E	12.84	CH 89°59'33" E	12.84
14+78.32	S 89°59'33" E	12.84	CH 89°59'33" E	12.84
14+91.16	S 89°59'33" E	12.84	CH 89°59'33" E	12.84
15+04.00	S 89°59'33" E	12.84	CH 89°59'33" E	12.84
15+16.84	S 89°59'33" E	12.84	CH 89°59'33" E	12.84
15+29.68	S 89°59'33" E	12.84	CH 89°59'33" E	12.84
15+42.52	S 89°59'33" E	12.84	CH 89°59'33" E	12.84
15+55.36	S 89°59'33" E	12.84	CH 89°59'33" E	12.84
15+68.20	S 89°59'33" E	12.84	CH 89°59'33" E	12.84
15+81.04	S 89°59'33" E	12.84	CH 89°59'33" E	12.84
15+93.88	S 89°59'33" E	12.84	CH 89°59'33" E	12.84
16+06.72	S 89°59'33" E	12.84	CH 89°59'33" E	12.84
16+19.56	S 89°59'33" E	12.84	CH 89°59'33" E	12.84
16+32.40	S 89°59'33" E	12.84	CH 89°59'33" E	12.84
16+45.24	S 89°59'33" E	12.84	CH 89°59'33" E	12.84
16+58.08	S 89°59'33" E	12.84	CH 89°59'33" E	12.84
17+10.92	S 89°59'33" E	12.84	CH 89°59'33" E	12.84
17+23.76	S 89°59'33" E	12.84	CH 89°59'33" E	12.84
17+36.60	S 89°59'33" E	12.84	CH 89°59'33" E	12.84
17+49.44	S 89°59'33" E	12.84	CH 89°59'33" E	12.84
17+62.28	S 89°59'33" E	12.84	CH 89°59'33" E	12.84
17+75.12	S 89°59'33" E	12.84	CH 89°59'33" E	12.84
17+87.96	S 89°59'33" E	12.84	CH 89°59'33" E	12.84
18+00.80	S 89°59'33" E	12.84	CH 89°59'33" E	12.84
18+13.64	S 89°59'33" E	12.84	CH 89°59'33" E	12.84
18+26.48	S 89°59'33" E	12.84	CH 89°59'33" E	12.84
18+39.32	S 89°59'33" E	12.84	CH 89°59'33" E	12.84
18+52.16	S 89°59'33" E	12.84	CH 89°59'33" E	12.84
18+65.00	S 89°59'33" E	12.84	CH 89°59'33" E	12.84
18+77.84	S 89°59'33" E	12.84	CH 89°59'33" E	12.84
18+90.68	S 89°59'33" E	12.84	CH 89°59'33" E	12.84
19+03.52	S 89°59'33" E	12.84	CH 89°59'33" E	12.84
19+16.36	S 89°59'33" E	12.84	CH 89°59'33" E	12.84
19+29.20	S 89°59'33" E	12.84	CH 89°59'33" E	12.84
19+42.04	S 89°59'33" E	12.84	CH 89°59'33" E	12.84
19+54.88	S 89°59'33" E	12.84	CH 89°59'33" E	12.84
20+07.72	S 89°59'33" E	12.84	CH 89°59'33" E	12.84
20+20.56	S 89°59'33" E	12.84	CH 89°59'33" E	12.84
20+33.40	S 89°59'33" E	12.84	CH 89°59'33" E	12.84
20+46.24	S 89°59'33" E	12.84	CH 89°59'33" E	12.84
20+59.08	S 89°59'33" E	12.84	CH 89°59'33" E	12.84
21+11.92	S 89°59'33" E	12.84	CH 89°59'33" E	12.84
21+24.76	S 89°59'33" E	12.84	CH 89°59'33" E	12.84
21+37.60	S 89°59'33" E	12.84	CH 89°59'33" E	12.84
21+50.44	S 89°59'33" E	12.84	CH 89°59'33" E	12.84
21+63.28	S 89°59'33" E	12.84	CH 89°59'33" E	12.84
21+76.12	S 89°59'33" E	12.84	CH 89°59'33" E	12.84
21+88.96	S 89°59'33" E	12.84	CH 89°59'33" E	12.84
22+01.80	S 89°59'33" E	12.84	CH 89°59'33" E	12.84
22+14.64	S 89°59'33" E	12.84	CH 89°59'33" E	12.84
22+27.48	S 89°59'33" E	12.84	CH 89°59'33" E	12.84
22+40.32	S 89°59'33" E	12.84	CH 89°59'33" E	12.84
22+53.16	S 89°59'33" E	12.84	CH 89°59'33" E	12.84
22+66.00	S 89°59'33" E	12.84	CH 89°59'33" E	12.84
22+78.84	S 89°59'33" E	12.84	CH 89°59'33" E	12.84
22+91.68	S 89°59'33" E	12.84	CH 89°59'33" E	12.84
23+04.52	S 89°59'33" E			

## ADMINISTRATIVE COMMENT

Reference No. \_\_\_\_\_

Administrative Department: Public Works

PURPOSE: To accept finalized subdivision into the road inventory.  
Developer/Owners(s) have dedicated the rights of way to the public as indicated on the finalized subdivision plats recorded in the Clerk of Court's Office.

RECOMMENDATION: The Public Works Department recommends adoption.