

ST. TAMMANY PARISH COUNCIL

ORDINANCE

ORDINANCE CALENDAR NO: 6995

ORDINANCE COUNCIL SERIES NO: _____

COUNCIL SPONSOR: BINDER/COOPER

PROVIDED BY: CIVIL DIVISION ADA

INTRODUCED BY: _____

SECONDED BY: _____

ON THE 2 DAY OF JUNE , 2022

ORDINANCE TO DECLARE CERTAIN PARCELS ALONG
HIGHWAY 434 AS SURPLUS PROPERTY AND TO AUTHORIZE
THE TRANSFER OF SAID PROPERTY TO THE STATE OF
LOUISIANA, DEPARTMENT OF TRANSPORTATION AND
DEVELOPMENT (WARD 7, DISTRICT 11)

WHEREAS, St. Tammany Parish owns the property identified as parcels 2-5, 8-1, 9-2 and 10-1 in the attachment hereto; and

WHEREAS, the State of Louisiana, Department of Transportation and Development, has identified this property as being desirable for construction of their Highway 3241, Segment 1, I-12/La 434 to La 36 project; and

WHEREAS, Parish desires to transfer the fee parcels via cash sale for appraised value in order to facilitate DOTD's project.

THE PARISH OF ST. TAMMANY HEREBY ORDAINS: that the property described in the attachment hereto as Parcels 2-5, 8-1, 9-2 and 10-1 are surplus property to be sold to the State of Louisiana, Department of Transportation and Development for appraised value and/or by any other method provided by Louisiana law; and

BE IT FURTHER ORDAINED: that pursuant to all applicable provisions of law, the Office of the Parish President is authorized to assess, deem, designate and determine that such immovable property to be sold is now surplus; and

BE IT FURTHER ORDAINED: that the Office of the Parish President is authorized to exercise its discretion in selling the property for the purpose of facilitating the construction of the Hwy 3241 project; and

BE IT FURTHER ORDAINED: that all actions previously taken by the Office of the Parish President in furtherance of the actions contemplated herein are ratified and accepted accordingly.

REPEAL: All ordinances or parts of Ordinances in conflict herewith are hereby repealed.

SEVERABILITY: If any provision of this Ordinance shall be held to be invalid, such invalidity shall not affect other provisions herein which can be given effect without the invalid provision and to this end the provisions of this Ordinance are hereby declared to be severable.

EFFECTIVE DATE: This Ordinance shall become effective fifteen (15) days after adoption.

MOVED FOR ADOPTION BY: _____SECONDED BY: _____

WHEREUPON THIS ORDINANCE WAS SUBMITTED TO A VOTE AND RESULTED IN THE FOLLOWING:

YEAS: _____

NAYS: _____

ABSTAIN: _____

ABSENT: _____

THIS ORDINANCE WAS DECLARED DULY ADOPTED AT A REGULAR MEETING OF THE PARISH COUNCIL ON THE 7 DAY OF JULY , 2022 ; AND BECOMES ORDINANCE COUNCIL SERIES NO _____.

JERRY BINDER, COUNCIL CHAIRMAN

ATTEST:

KATRINA L. BUCKLEY, COUNCIL CLERK

MICHAEL B. COOPER, PARISH PRESIDENT

Published Introduction: MAY 25 , 2022

Published Adoption: _____, 2022

Delivered to Parish President: _____, 2022 at _____

Returned to Council Clerk: _____, 2022 at _____

Ordinance Administrative Comment

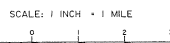
ORDINANCE TO DECLARE CERTAIN PARCELS ALONG HIGHWAY 434 AS SURPLUS PROPERTY AND TO AUTHORIZE THE TRANSFER OF SAID PROPERTY TO THE STATE OF LOUISIANA, DEPARTMENT OF TRANSPORTATION AND DEVELOPMENT (WARD 7, DISTRICT 11)

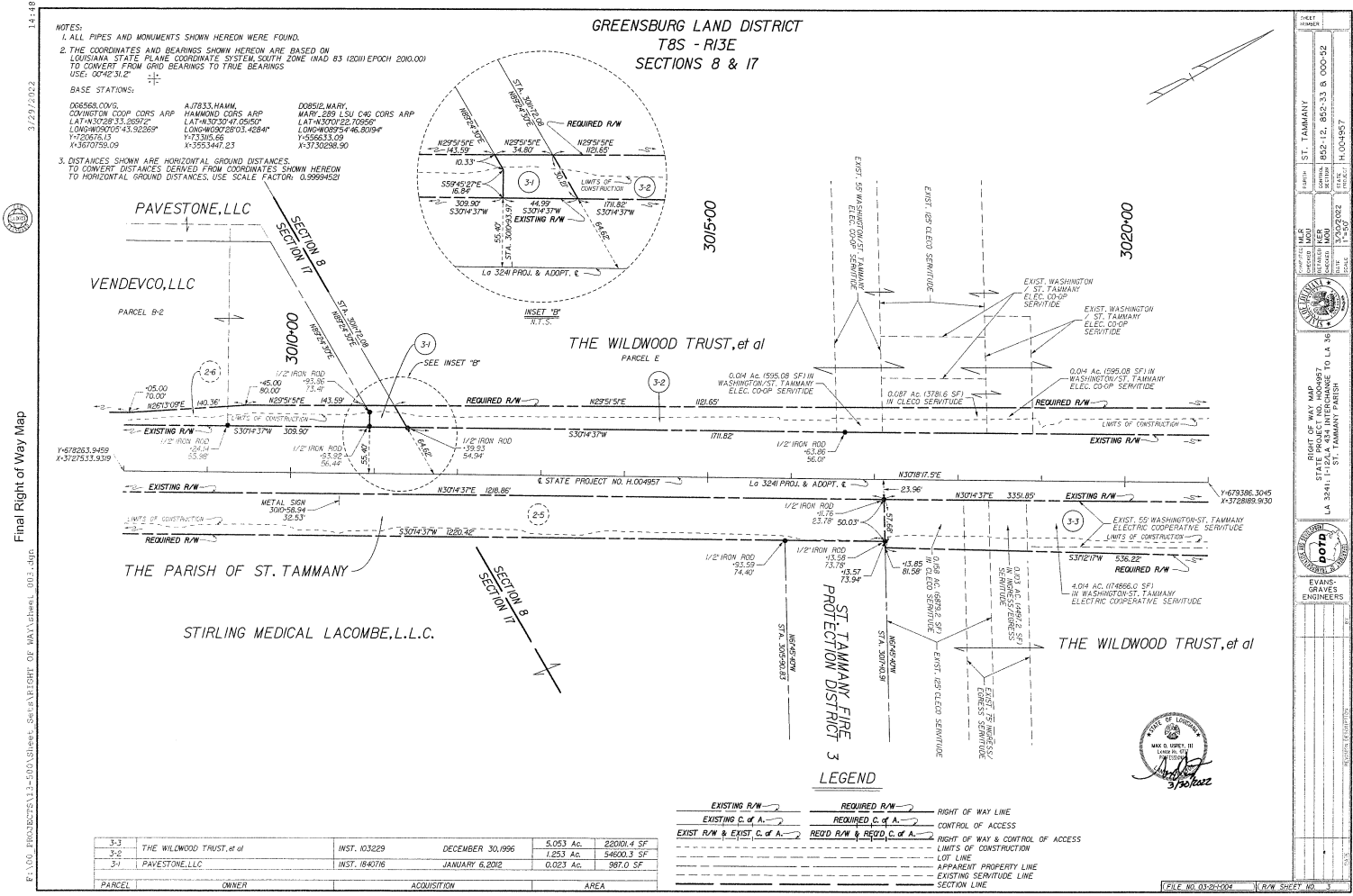
LaDOTD has requested Parish's assistance by selling the parcels identified as 2-5, 8-1, 9-2 and 10-1 to LaDOTD for advancement of Segment 1 of the project for construction of Highway 3241 to Bush. Parcels will be sold to LaDOTD for appraised value and in full ownership.

ST. TAMMANY PARISH



END CONSTRUCTION
TAMANEND WAY
C.S. 000-52
STA. 502+69.39





1. \mathcal{C}_1 is a \mathcal{C}_2 -subalgebra of \mathcal{C}_1 if and only if \mathcal{C}_1 is a \mathcal{C}_2 -subalgebra of \mathcal{C}_1 .

R/W SHEET NO. 8

[illegible]

Final Right of Way Map

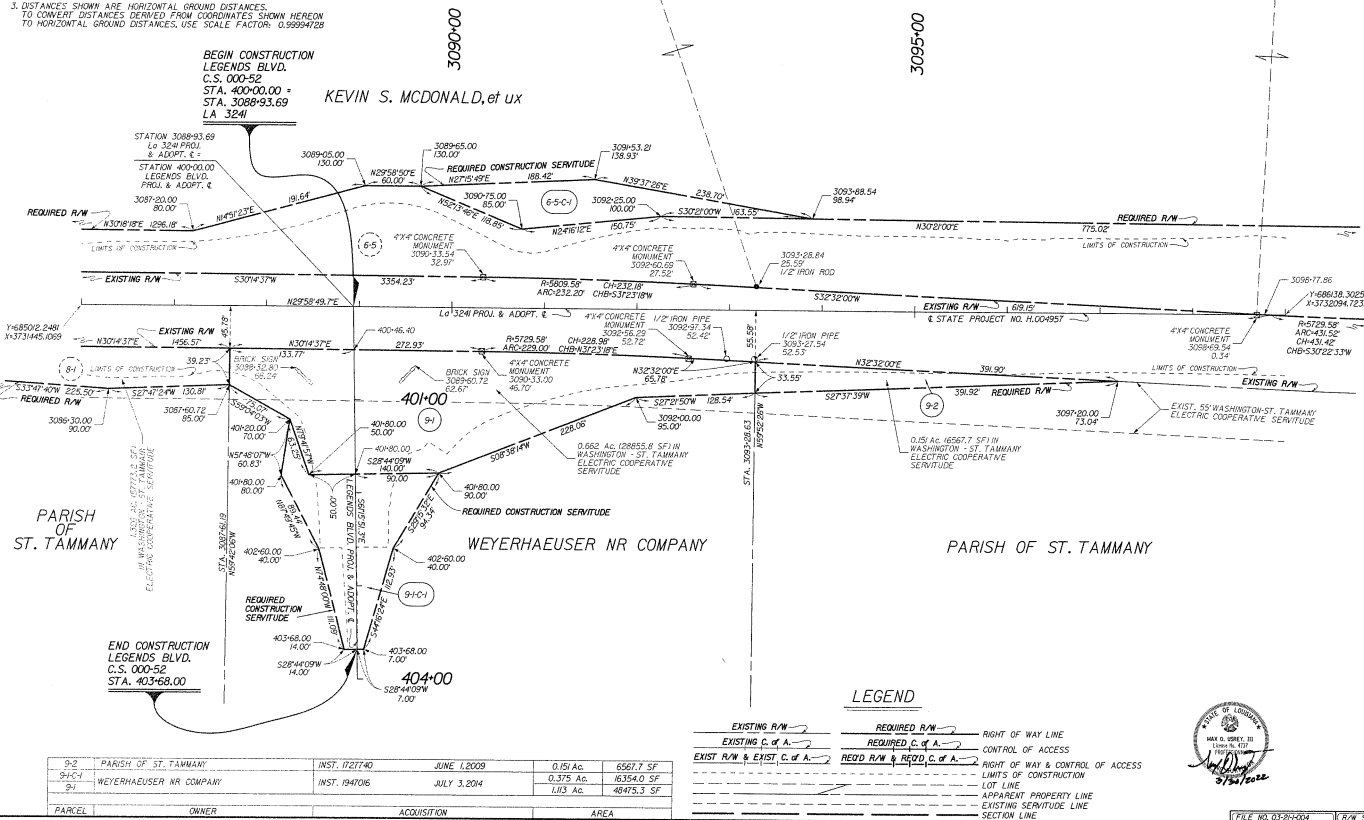
NOTES:
1. ALL PIPES AND MONUMENTS SHOWN HEREON WERE FOUND.
2. THE COORDINATES AND BEARINGS SHOWN HEREON ARE BASED ON LOUISIANA STATE PLANE COORDINATE SYSTEM SOUTH ZONE (NAD 83 (2011) EPOCH 2010.00) TO CONVERT FROM GRID BEARINGS TO TRUE BEARINGS USE: 074253.9"
3. DISTANCES SHOWN ARE HORIZONTAL GROUND DISTANCES. TO CONVERT DISTANCES DERIVED FROM COORDINATES SHOWN HEREON TO HORIZONTAL GROUND DISTANCES, USE SCALE FACTOR: 0.99994728

BASE STATIONS:
D8568.00V6
DOWNTOWN CORP CORP ARP
LAT: N3028°33.2872"
LONG: W90°05'43.32269"
Y: 1700676.13
X: 5610729.09

AJ7833.HAMM
HAMMOND CORP ARP
LAT: N3028°34'05.50"
LONG: W90°05'43.4284"
Y: 173395.68
X: 5553447.23

D8562.MARY
MARY-289 (151) C&S CORP ARP
LAT: N3028°22'70.956"
LONG: W90°05'46.6094"
Y: 173395.68
X: 5730298.90

GREENSBURG LAND DISTRICT
T8S - R13E
SECTION 4



LEGEND

- EXISTING R/W
- REQUIRED R/W
- RIGHT OF WAY LINE
- EXIST. R/W & EXIST. C.O.A.
- REQUIRED C.O.A.
- CONTROL OF ACCESS
- RIGHT OF WAY & CONTROL OF ACCESS
- LIMITS OF CONSTRUCTION
- LOT LINE
- APPARENT PROPERTY LINE
- EXISTING SERVITUDE LINE
- SECTION LINE

PARCEL	OWNER	ACQUISITION	AREA
9-2	PARISH OF ST. TAMMANY	INST. 0721740	JUNE 1, 2009
9-1	WEYERHAEUSER NR COMPANY	INST. 0947016	JULY 3, 2004



FILE NO. 0320404

SHEET NO. 9

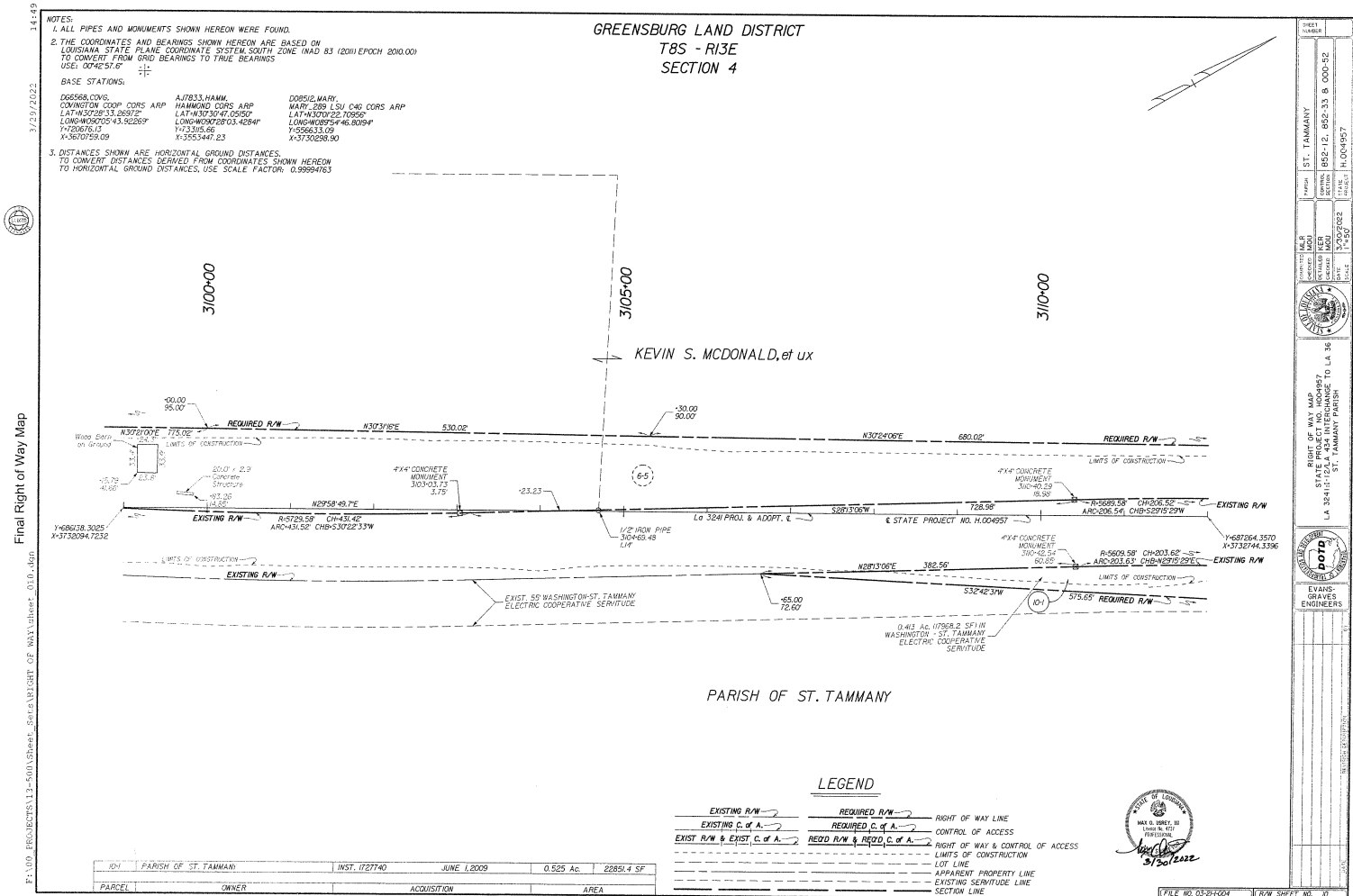
ST. TAMMANY

882-12, 882-33 & 000-12

3/24/2022

H. 004957

EVANS GRAVES ENGINEERS



14.49

3/23/2023

Final Right of Way Map

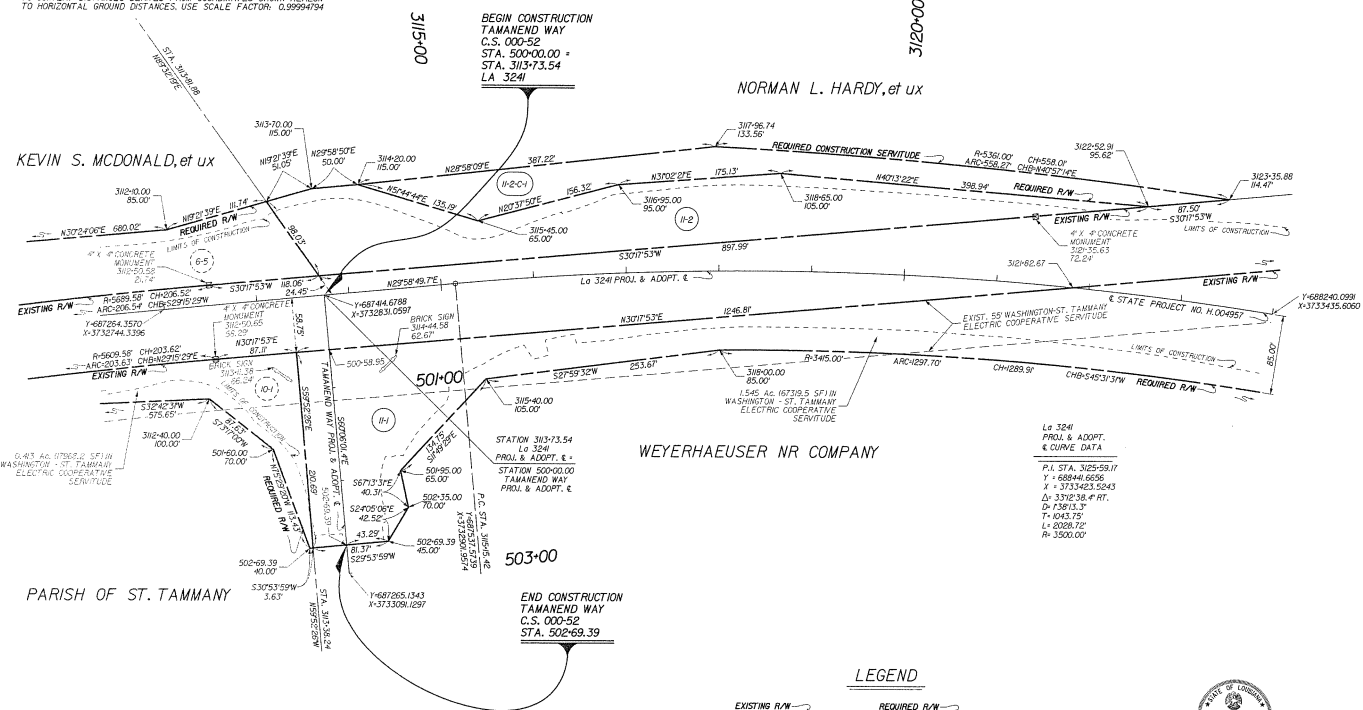
P:\NO. 1902\TEXT\13-500\Sheet - Right of Way\Drawn - 011.dgn

- NOTES:
1. ALL PIPES AND MONUMENTS SHOWN HEREON WERE FOUND.
 2. THE COORDINATES AND BEARINGS SHOWN HEREON ARE BASED ON LOUISIANA STATE PLANE COORDINATE SYSTEM SOUTH ZONE (NAD 83 (2011) EPOCH 2010.00) TO CONVERT FROM GRID BEARINGS TO TRUE BEARINGS USE: 0°43'0.7"
 3. DISTANCES SHOWN ARE HORIZONTAL GROUND DISTANCES. TO CONVERT DISTANCES DERIVED FROM COORDINATES SHOWN HEREON TO HORIZONTAL GROUND DISTANCES, USE SCALE FACTOR: 0.99994794

BASE STATIONS:

DE568.COVG	AJ7833.HAMM	D08512.MARY
CONVENTION CORP. CORP. ARP	HAMMOND CORP. ARP	MARY 288 (S) C4G CORP. ARP
LAT: N307°58'33.2697"	LAT: N307°50'47.0550"	LAT: N307°02'22.70966"
LONG: W007°05'43.36289"	LONG: W007°03'03.4284"	LONG: W007°05'46.8094"
Y: 30076.13	Y: 33065.66	Y: 33663.33
X: 3010759.09	X: 3555447.23	X: 3130298.90

GREENSBURG LAND DISTRICT
T8S - R13E
SECTION 4



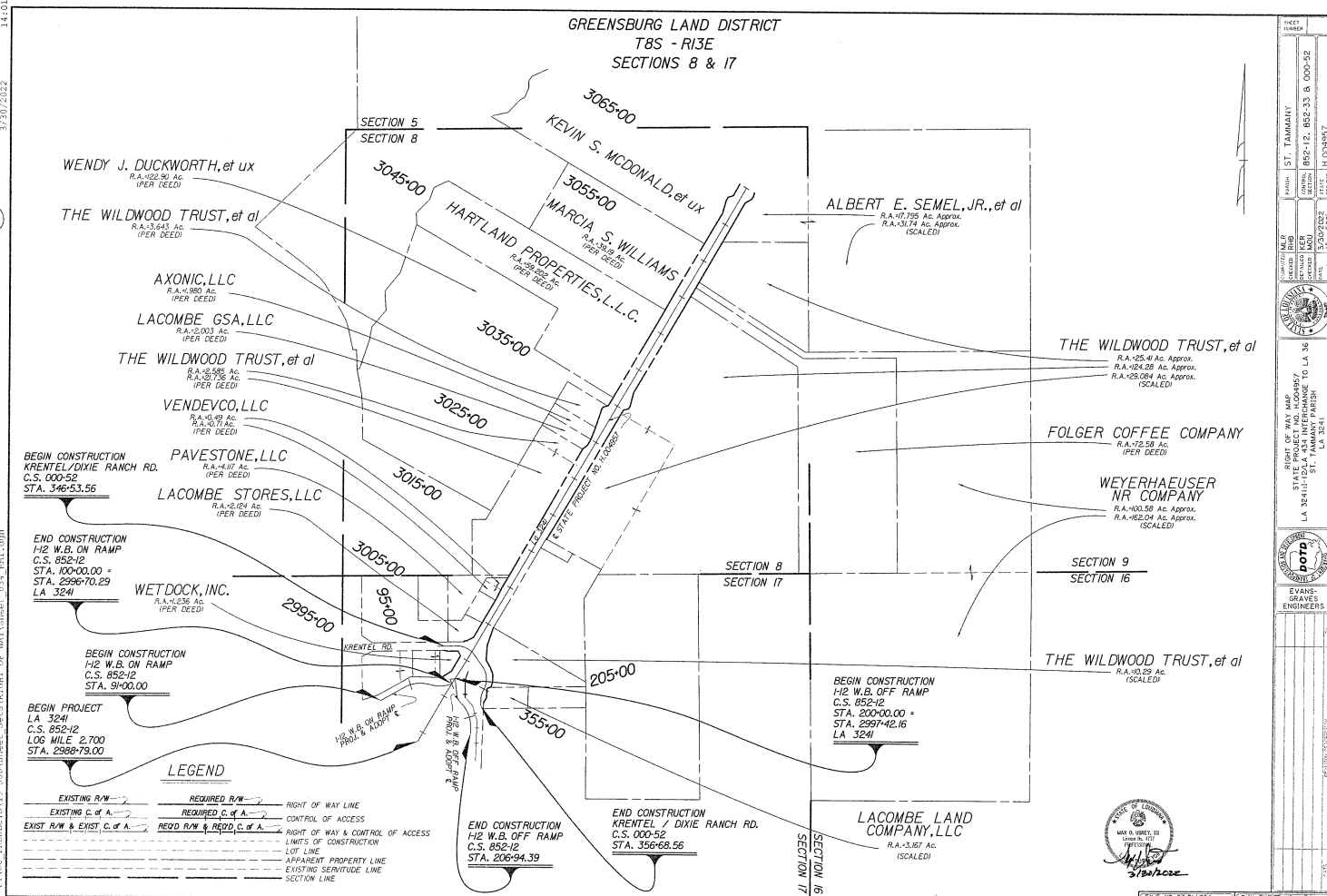
PARCEL	OWNER	ACQUISITION	AREA
I-2-C1	NORMAN L. HARDY, et ux	INST. 994940 MAY 3, 1996	0.592 Ac. 25786.8 SF
I-2	NORMAN L. HARDY, et ux	INST. 159706 JULY 3, 2014	1.159 Ac. 50470.2 SF
I-1	WEYERHAEUSER NR COMPANY	INST. 1547016 JULY 3, 2014	22.186 Ac. 966440.6 SF

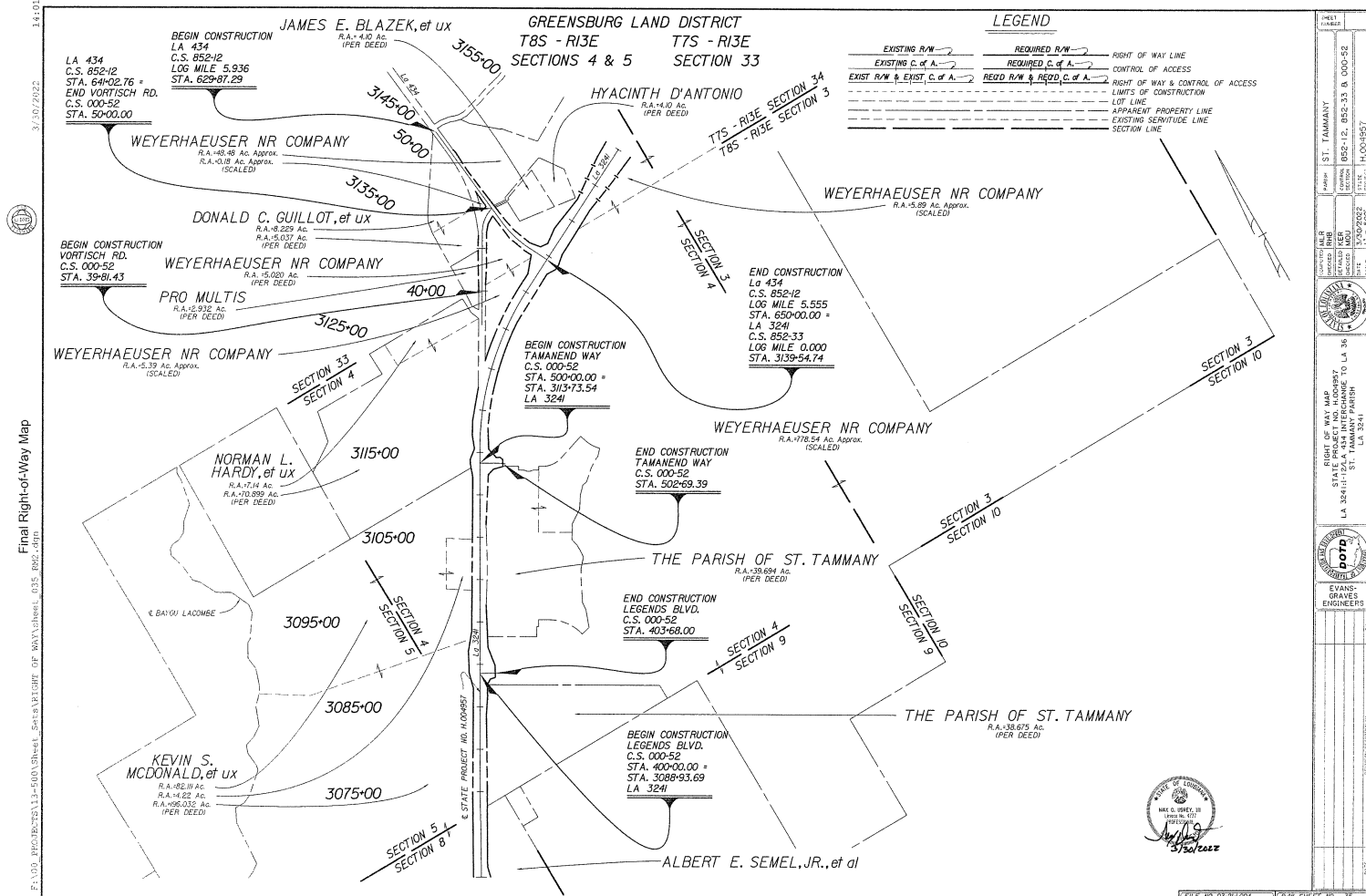
EXISTING R/W	REQUIRED R/W	RIGHT OF WAY LINE
EXISTING C.O.A.	REQUIRED C.O.A.	CONTROL OF ACCESS
EXIST R/W & EXIST. C.O.A.	REQD. R/W & REQD. C.O.A.	RIGHT OF WAY & CONTROL OF ACCESS
		LIMITS OF CONSTRUCTION
		LOT LINE
		APPARENT PROPERTY LINE
		EXISTING SERVICE LINE
		SECTION LINE

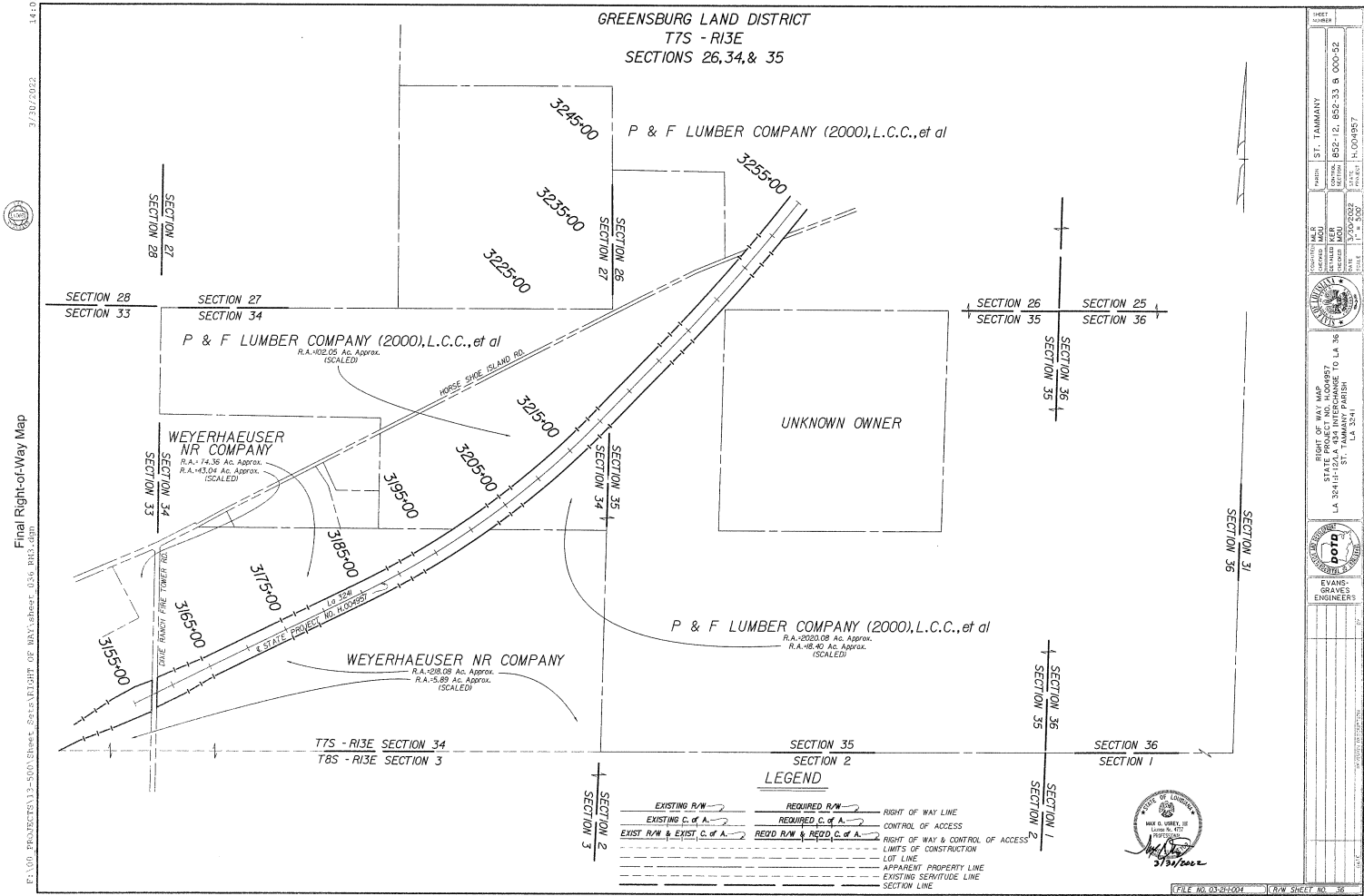


FILE NO. 03-21-004 R/W SHEET NO. 8

SHEET	8
PROJECT	ST. TAMMANY
DATE	3/23/2023
BY	MAX A. VIREL, III
CHECKED	MAX A. VIREL, III
APPROVED	MAX A. VIREL, III
SCALE	1"=50'
PROJECT NO.	03-21-004
SECTION	SECTION 4
DATE	3/23/2023
BY	MAX A. VIREL, III
CHECKED	MAX A. VIREL, III
APPROVED	MAX A. VIREL, III
SCALE	1"=50'
PROJECT NO.	03-21-004
SECTION	SECTION 4
DATE	3/23/2023
BY	MAX A. VIREL, III
CHECKED	MAX A. VIREL, III
APPROVED	MAX A. VIREL, III
SCALE	1"=50'
PROJECT NO.	03-21-004
SECTION	SECTION 4
DATE	3/23/2023
BY	MAX A. VIREL, III
CHECKED	MAX A. VIREL, III
APPROVED	MAX A. VIREL, III
SCALE	1"=50'
PROJECT NO.	03-21-004
SECTION	SECTION 4
DATE	3/23/2023
BY	MAX A. VIREL, III
CHECKED	MAX A. VIREL, III
APPROVED	MAX A. VIREL, III
SCALE	1"=50'
PROJECT NO.	03-21-004
SECTION	SECTION 4
DATE	3/23/2023
BY	MAX A. VIREL, III
CHECKED	MAX A. VIREL, III
APPROVED	MAX A. VIREL, III
SCALE	1"=50'
PROJECT NO.	03-21-004
SECTION	SECTION 4
DATE	3/23/2023
BY	MAX A. VIREL, III
CHECKED	MAX A. VIREL, III
APPROVED	MAX A. VIREL, III
SCALE	1"=50'
PROJECT NO.	03-21-004
SECTION	SECTION 4
DATE	3/23/2023
BY	MAX A. VIREL, III
CHECKED	MAX A. VIREL, III
APPROVED	MAX A. VIREL, III
SCALE	1"=50'
PROJECT NO.	03-21-004
SECTION	SECTION 4
DATE	3/23/2023
BY	MAX A. VIREL, III
CHECKED	MAX A. VIREL, III
APPROVED	MAX A. VIREL, III
SCALE	1"=50'
PROJECT NO.	03-21-004
SECTION	SECTION 4
DATE	3/23/2023
BY	MAX A. VIREL, III
CHECKED	MAX A. VIREL, III
APPROVED	MAX A. VIREL, III
SCALE	1"=50'
PROJECT NO.	03-21-004
SECTION	SECTION 4
DATE	3/23/2023
BY	MAX A. VIREL, III
CHECKED	MAX A. VIREL, III
APPROVED	MAX A. VIREL, III
SCALE	1"=50'
PROJECT NO.	03-21-004
SECTION	SECTION 4
DATE	3/23/2023
BY	MAX A. VIREL, III
CHECKED	MAX A. VIREL, III
APPROVED	MAX A. VIREL, III
SCALE	1"=50'
PROJECT NO.	03-21-004
SECTION	SECTION 4
DATE	3/23/2023
BY	MAX A. VIREL, III
CHECKED	MAX A. VIREL, III
APPROVED	MAX A. VIREL, III
SCALE	1"=50'
PROJECT NO.	03-21-004
SECTION	SECTION 4
DATE	3/23/2023
BY	MAX A. VIREL, III
CHECKED	MAX A. VIREL, III
APPROVED	MAX A. VIREL, III
SCALE	1"=50'
PROJECT NO.	03-21-004
SECTION	SECTION 4
DATE	3/23/2023
BY	MAX A. VIREL, III
CHECKED	MAX A. VIREL, III
APPROVED	MAX A. VIREL, III
SCALE	1"=50'
PROJECT NO.	03-21-004
SECTION	SECTION 4
DATE	3/23/2023
BY	MAX A. VIREL, III
CHECKED	MAX A. VIREL, III
APPROVED	MAX A. VIREL, III
SCALE	1"=50'
PROJECT NO.	03-21-004
SECTION	SECTION 4
DATE	3/23/2023
BY	MAX A. VIREL, III
CHECKED	MAX A. VIREL, III
APPROVED	MAX A. VIREL, III
SCALE	1"=50'
PROJECT NO.	03-21-004
SECTION	SECTION 4
DATE	3/23/2023
BY	MAX A. VIREL, III
CHECKED	MAX A. VIREL, III
APPROVED	MAX A. VIREL, III
SCALE	1"=50'
PROJECT NO.	03-21-004
SECTION	SECTION 4
DATE	3/23/2023
BY	MAX A. VIREL, III
CHECKED	MAX A. VIREL, III
APPROVED	MAX A. VIREL, III
SCALE	1"=50'
PROJECT NO.	03-21-004
SECTION	SECTION 4
DATE	3/23/2023
BY	MAX A. VIREL, III
CHECKED	MAX A. VIREL, III
APPROVED	MAX A. VIREL, III
SCALE	1"=50'
PROJECT NO.	03-21-004
SECTION	SECTION 4
DATE	3/23/2023
BY	MAX A. VIREL, III
CHECKED	MAX A. VIREL, III
APPROVED	MAX A. VIREL, III
SCALE	1"=50'
PROJECT NO.	03-21-004
SECTION	SECTION 4
DATE	3/23/2023
BY	MAX A. VIREL, III
CHECKED	MAX A. VIREL, III
APPROVED	MAX A. VIREL, III
SCALE	1"=50'
PROJECT NO.	03-21-004
SECTION	SECTION 4
DATE	3/23/2023
BY	MAX A. VIREL, III
CHECKED	MAX A. VIREL, III
APPROVED	MAX A. VIREL, III
SCALE	1"=50'
PROJECT NO.	03-21-004
SECTION	SECTION 4
DATE	3/23/2023
BY	MAX A. VIREL, III
CHECKED	MAX A. VIREL, III
APPROVED	MAX A. VIREL, III
SCALE	1"=50'
PROJECT NO.	03-21-004
SECTION	SECTION 4
DATE	3/23/2023
BY	MAX A. VIREL, III
CHECKED	MAX A. VIREL, III
APPROVED	MAX A. VIREL, III
SCALE	1"=50'
PROJECT NO.	03-21-004
SECTION	SECTION 4
DATE	3/23/2023
BY	MAX A. VIREL, III
CHECKED	MAX A. VIREL, III
APPROVED	MAX A. VIREL, III
SCALE	1"=50'
PROJECT NO.	03-21-004
SECTION	SECTION 4
DATE	3/23/2023
BY	MAX A. VIREL, III
CHECKED	MAX A. VIREL, III
APPROVED	MAX A. VIREL, III
SCALE	1"=50'
PROJECT NO.	03-21-004
SECTION	SECTION 4
DATE	3/23/2023
BY	MAX A. VIREL, III
CHECKED	MAX A. VIREL, III
APPROVED	MAX A. VIREL, III
SCALE	1"=50'
PROJECT NO.	03-21-004
SECTION	SECTION 4
DATE	3/23/2023
BY	MAX A. VIREL, III
CHECKED	MAX A. VIREL, III
APPROVED	MAX A. VIREL, III
SCALE	1"=50'
PROJECT NO.	03-21-004
SECTION	SECTION 4
DATE	3/23/2023
BY	MAX A. VIREL, III
CHECKED	MAX A. VIREL, III
APPROVED	MAX A. VIREL, III
SCALE	1"=50'
PROJECT NO.	03-21-004
SECTION	SECTION 4
DATE	3/23/2023
BY	MAX A. VIREL, III
CHECKED	MAX A. VIREL, III
APPROVED	MAX A. VIREL, III
SCALE	1"=50'
PROJECT NO.	03-21-004
SECTION	SECTION 4
DATE	3/23/2023
BY	MAX A. VIREL, III
CHECKED	MAX A. VIREL, III
APPROVED	MAX A. VIREL, III
SCALE	1"=50'
PROJECT NO.	03-21-004
SECTION	SECTION 4
DATE	3/23/2023
BY	MAX A. VIREL, III
CHECKED	MAX A. VIREL, III
APPROVED	MAX A. VIREL, III
SCALE	1"=50'
PROJECT NO.	03-21-004
SECTION	SECTION 4
DATE	3/23/2023
BY	MAX A. VIREL, III
CHECKED	MAX A. VIREL, III
APPROVED	MAX A. VIREL, III
SCALE	1"=50'
PROJECT NO.	03-21-004
SECTION	SECTION 4
DATE	3/23/2023
BY	MAX A. VIREL, III
CHECKED	MAX A. VIREL, III
APPROVED	MAX A. VIREL, III
SCALE	1"=50'
PROJECT NO.	03-21-004
SECTION	SECTION 4
DATE	3/23/2023
BY	MAX A. VIREL, III
CHECKED	MAX A. VIREL, III
APPROVED	MAX A. VIREL, III
SCALE	1"=50'
PROJECT NO.	03-21-004
SECTION	SECTION 4
DATE	3/23/2023
BY	MAX A. VIREL, III
CHECKED	MAX A. VIREL, III
APPROVED	MAX A. VIREL, III
SCALE	1"=50'
PROJECT NO.	03-21-004
SECTION	SECTION 4
DATE	3/23/2023
BY	MAX A. VIREL, III
CHECKED	MAX A. VIREL, III
APPROVED	MAX A. VIREL, III
SCALE	1"=50'
PROJECT NO.	03-21-004
SECTION	SECTION 4
DATE	3/23/2023
BY	MAX A. VIREL, III
CHECKED	MAX A. VIREL, III
APPROVED	MAX A. VIREL, III
SCALE	1"=50'
PROJECT NO.	03-21-004
SECTION	SECTION 4
DATE	3/23/2023
BY	MAX A. VIREL, III
CHECKED	MAX A. VIREL, III
APPROVED	MAX A. VIREL, III
SCALE	1"=50'
PROJECT NO.	03-21-004
SECTION	SECTION 4
DATE	3/23/2023
BY	MAX A. VIREL, III
CHECKED	MAX A. VIREL, III
APPROVED	MAX A. VIREL, III
SCALE	1"=50'
PROJECT NO.	03-21-004
SECTION	SECTION 4
DATE	3/23/2023
BY	MAX A. VIREL, III
CHECKED	MAX A. VIREL, III
APPROVED	MAX A. VIREL, III
SCALE	1"=50'
PROJECT NO.	03-21-004
SECTION	SECTION 4
DATE	3/23/2023
BY	MAX A. VIREL, III
CHECKED	MAX A. VIREL, III
APPROVED	MAX A. VIREL, III
SCALE	1"=50'
PROJECT NO.	03-21-004
SECTION	SECTION 4
DATE	3/23/2023
BY	MAX A. VIREL, III
CHECKED	MAX A. VIREL, III
APPROVED	MAX A. VIREL, III
SCALE	1"=50'
PROJECT NO.	03-21-004
SECTION	SECTION 4
DATE	3/23/2023
BY	MAX A. VIREL, III
CHECKED	MAX A. VIREL, III
APPROVED	MAX A. VIREL, III
SCALE	1"=50'
PROJECT NO.	03-21-004
SECTION	SECTION 4
DATE	3/23/2023
BY	MAX A. VIREL, III
CHECKED	MAX A. VIREL, III
APPROVED	MAX A. VIREL, III
SCALE	1"=50'
PROJECT NO.	03-21-004
SECTION	SECTION 4
DATE	3/23/2023
BY	MAX A. VIREL, III
CHECKED	MAX A. VIREL, III
APPROVED	MAX A. VIREL, III
SCALE	1"=50'
PROJECT NO.	03-21-004
SECTION	SECTION 4
DATE	3/23/2023
BY	MAX A. VIREL, III
CHECKED	MAX A. VIREL, III
APPROVED	MAX A. VIREL, III
SCALE	1"=50'
PROJECT NO.	03-21-004
SECTION	SECTION 4
DATE	3/23/2023
BY	MAX A. VIREL, III
CHECKED	MAX A. VIREL, III
APPROVED	MAX A. VIREL, III
SCALE	1"=50'
PROJECT NO.	03-21-004
SECTION	SECTION 4
DATE	3/23/2023
BY	MAX A. VIREL, III
CHECKED	MAX A. VIREL, III
APPROVED	MAX A. VIREL, III
SCALE	1"=50'
PROJECT NO.	03-21-004
SECTION	SECTION 4
DATE	3/23/2023
BY	MAX A. VIREL, III
CHECKED	MAX A. VIREL, III
APPROVED	MAX A. VIREL, III
SCALE	1"=50'
PROJECT NO.	03-21-004
SECTION	SECTION 4
DATE	3/23/2023
BY	MAX A. VIREL, III
CHECKED	MAX A. VIREL, III
APPROVED	MAX A. VIREL, III
SCALE	1"=50'
PROJECT NO.	03-21-004
SECTION	SECTION 4
DATE	3/23/2023
BY	MAX A. VIREL, III
CHECKED	MAX A. VIREL, III
APPROVED	MAX A. VIREL, III
SCALE	1"=50'
PROJECT NO.	03-21-004
SECTION	SECTION 4
DATE	3/23/2023
BY	MAX A. VIREL, III
CHECKED	MAX A. VIREL, III
APPROVED	MAX A. VIREL, III
SCALE	1"=50'
PROJECT NO.	03-21-004
SECTION	SECTION 4
DATE	3/23/2023
BY	MAX A. VIREL, III
CHECKED	MAX A. VIREL, III
APPROVED	MAX A. VIREL, III
SCALE	1"=50'
PROJECT NO.	03-21-004
SECTION	SECTION 4
DATE	3/23/2023
BY	MAX A. VIREL, III
CHECKED	MAX A. VIREL, III
APPROVED	MAX A. VIREL, III
SCALE	1"=50'
PROJECT NO.	03-21-004
SECTION	SECTION 4
DATE	3/23/2023
BY	MAX A. VIREL, III
CHECKED	MAX A. VIREL, III
APPROVED	MAX A. VIREL, III
SCALE	1"=50'
PROJECT NO.	03-21-004
SECTION	SECTION 4
DATE	3/23/2023
BY	MAX A. VIREL, III
CHECKED	MAX A. VIREL, III
APPROVED	MAX A. VIREL, III
SCALE	1"=50'
PROJECT NO.	03-21-004
SECTION	SECTION 4
DATE	3/23/2023
BY	MAX A. VIREL, III
CHECKED	MAX A. VIREL, III
APPROVED	MAX A. VIREL, III
SCALE	1"=50'
PROJECT NO.	03-21-004
SECTION	SECTION 4
DATE	3/23/2023
BY	MAX A. VIREL, III
CHECKED	MAX A. VIREL, III
APPROVED	MAX A. VIREL, III
SCALE	1"=50'
PROJECT NO.	03-21-004
SECTION	SECTION 4
DATE	3/23/2023
BY	MAX A. VIREL, III
CHECKED	MAX A. VIREL, III
APPROVED	MAX A. VIREL, III
SCALE	1"=50'
PROJECT NO.	03-21-004
SECTION	SECTION 4
DATE	3/23/2023
BY	MAX A. VIREL, III
CHECKED	MAX A. VIREL, III
APPROVED	MAX A. VIREL, III
SCALE	1"=50'
PROJECT NO.	03-21-004
SECTION	SECTION 4
DATE	3/23/2023
BY	MAX A. VIREL, III
CHECKED	MAX A. VIREL, III
APPROVED	MAX A. VIREL, III
SCALE	1"=50'
PROJECT NO.	03-21-004
SECTION	SECTION 4
DATE	3/23/2023
BY	MAX A. VIREL, III
CHECKED	MAX A. VIREL, III
APPROVED	MAX A. VIREL, III
SCALE	1"=50'
PROJECT NO.	03-21-004
SECTION	SECTION 4
DATE	3/23/2023
BY	MAX A. VIREL, III
CHECKED	MAX A. VIREL, III
APPROVED	MAX A. VIREL, III
SCALE	1"=50'
PROJECT NO.	03-21-004
SECTION	SECTION 4
DATE	3/23/2023
BY	MAX A. VIREL, III
CHECKED	MAX A. VIREL, III
APPROVED	MAX A. VIREL, III
SCALE	1"=50'







Final Right-of-Way Map

SECTION 28
SECTION 27
SECTION 26
SECTION 25
SECTION 33
SECTION 34
SECTION 35
SECTION 36
SECTION 31
SECTION 30

GREENSBURG LAND DISTRICT
T7S - R13E
SECTIONS 26, 34, & 35

P & F LUMBER COMPANY (2000), L.C.C., et al

WEYERHAEUSER NR COMPANY

UNKNOWN OWNER

3155+00
3165+00
3175+00
3185+00
3195+00
3205+00
3215+00
3225+00
3235+00
3245+00
3255+00

HORSE SHOE ISLAND RD.

STATE PROJECT NO. 11-000000

T7S - R13E SECTION 34
T8S - R13E SECTION 3

LEGEND

EXISTING R/W
EXISTING C. of A.
EXIST R/W & EXIST. C. of A.

REQUIRED R/W
REQUIRED C. of A.
REQD R/W & REQD C. of A.

RIGHT OF WAY LINE
CONTROL OF ACCESS
RIGHT OF WAY & CONTROL OF ACCESS
LIMITS OF CONSTRUCTION
LOT LINE
APPARENT PROPERTY LINE
EXISTING SERVITUDE LINE
SECTION LINE

FILE NO. 03-21104 R/W SHEET NO. 36

FILE NO.	03-21104
R/W SHEET NO.	36
SECTION	26, 34, & 35
TOWNSHIP	13N
RANGE	13E
COUNTY	ST. TAMMANY
STATE	LA
DATE	03/30/2022
BY	MA & SHER
CHECKED BY	MA & SHER
APPROVED BY	MA & SHER
ENGINEER	EVANGRADES ENGINEERS
PROJECT NO.	03-21104
PROJECT NAME	RIGHT OF WAY MAP FOR THE PROPOSED INTERCHANGE TO LA 36
PROJECT LOCATION	STATE ROUTE 124 A 433 INTERCHANGE TO LA 36
PROJECT DESCRIPTION	ST. TAMMANY PARISH, LA 36

