

ST. TAMMANY PARISH COUNCIL

ORDINANCE

ORDINANCE CALENDAR NO: 6994 ORDINANCE COUNCIL SERIES NO: _____

COUNCIL SPONSOR: BINDER/COOPER PROVIDED BY: PUBLIC WORKS

INTRODUCED BY: _____ SECONDED BY: _____

ON THE 2 DAY OF JUNE , 2022

AN ORDINANCE ACCEPTING FINALIZED SUBDIVISIONS INTO
THE ROAD AND DRAINAGE INVENTORIES, SPECIFICALLY
OAKLAWN TRACE SUBDIVISION PH. 1 (WARD7, DISTRICT 7)

WHEREAS, Developer/Owner(s) have dedicated the right of ways to the public as indicated on the finalized subdivision plat recorded in the Clerk of Court’s office.

THE PARISH OF ST. TAMMANY HEREBY ORDAINS: that all the area within the right-of-way, the road base, drainage ditches, culverts, laterals, canals and appurtenances belonging to or otherwise appertaining to the below indicated developments and authorized in the Resolution/Ordinance stated shall be incorporated in the Parish Maintenance System.

BE IT FURTHER ORDAINED: that all parish regulations, policies, procedures, and operating methods pertain to the Parish Selective Maintenance System shall apply to the aforementioned developments:

Streets to be accepted into the maintenance system are named:

Sunset Oak Blvd. (R07I021) for a distance of 2,678 ft.

Rowley Dr. (R07I022) for a distance of 804 ft.

Brownstone Dr. (R07I023) for a distance of 430 ft.

Oaklawn Trace Pond #1 (P07IW01021)

Oaklawn Trace Pond #2 (P07IW02021)

Sunset Oak Blvd. lateral #1 (D07IW01021) runs east off of Sunset Oak Blvd. for approximately 20ft.

Sunset Oak Blvd. lateral #2 (D07IW02021) runs south off of Sunset Oak Blvd. for approximately 20 ft.

Rowley Dr, lateral (D07IW01022) runs west off of Rowley Dr. for approximately 144 ft.

REPEAL: All ordinances or parts of Ordinances in conflict herewith are hereby repealed.

SEVERABILITY: If any provision of this Ordinance shall be held to be invalid, such invalidity shall not affect other provisions herein which can be given effect without the invalid provision and to this end the provisions of this Ordinance are hereby declared to be severable.

EFFECTIVE DATE: This Ordinance shall become effective fifteen (15) days after adoption.

MOVED FOR ADOPTION BY: _____SECONDED BY: _____

WHEREUPON THIS ORDINANCE WAS SUBMITTED TO A VOTE AND RESULTED IN THE FOLLOWING:

YEAS: _____

NAYS: _____

ABSTAIN: _____

ABSENT: _____

THIS ORDINANCE WAS DECLARED DULY ADOPTED AT A REGULAR MEETING OF THE PARISH COUNCIL ON THE 7 DAY OF JULY , 2022 ; AND BECOMES ORDINANCE COUNCIL SERIES NO ____.

JERRY BINDER, COUNCIL CHAIRMAN

ATTEST:

KATRINA L. BUCKLEY, COUNCIL CLERK

MICHAEL B. COOPER, PARISH PRESIDENT

Published Introduction: MAY 25 , 2022

Published Adoption: _____, 2022

Delivered to Parish President: _____, 2022 at _____

Returned to Council Clerk: _____, 2022 at _____

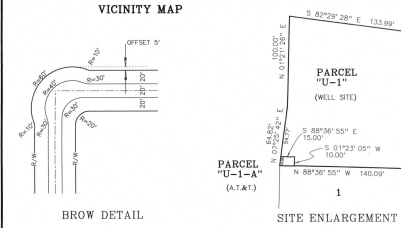
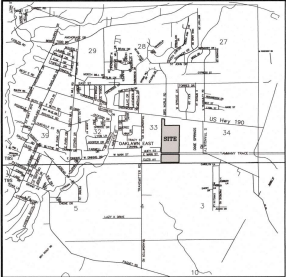
ADMINISTRATIVE COMMENT

Reference No. _____

Administrative Department: Public Works

PURPOSE: To accept finalized subdivision into the road inventory.
Developer/Owners(s) have dedicated the rights of way to the public as indicated on the finalized subdivision plats recorded in the Clerk of Court's Office.

RECOMMENDATION: The Public Works Department recommends adoption.



LEGAL DESCRIPTION

Range 13 East, 33rd Township 8 South, Louisiana and more fully described as follows:

Commence at the Section Corner common to Sections 33 & 4 Township 8 South, Range 13 East, and measure North 0°52'42" West a distance of 183.144 feet to the POINT OF BEGINNING.

From the POINT OF BEGINNING measure:

North 89°07'18" West a distance of 170.00 feet to a point;

Thence North 89°07'18" West a distance of 124.74 feet to a point;

Thence North 89°07'18" West a distance of 63.26 feet to a point;

Thence North 89°07'18" West a distance of 32.20 feet to a point;

Thence North 89°07'18" West a distance of 27.31 feet to a point;

Thence North 89°07'18" West a distance of 100.00 feet to a point;

Thence North 89°07'18" West a distance of 62.85 feet to a point;

Thence North 89°07'18" West a distance of 28.00 feet to a point;

Thence North 89°07'18" West a distance of 59.57 feet to a point;

Thence North 89°07'18" West a distance of 158.75 feet to a point;

Thence North 89°07'18" West a distance of 14.48 feet to a point;

Thence North 89°07'18" West a distance of 480.18 feet to a point;

Thence North 89°07'18" West a distance of 218.93 feet to a point;

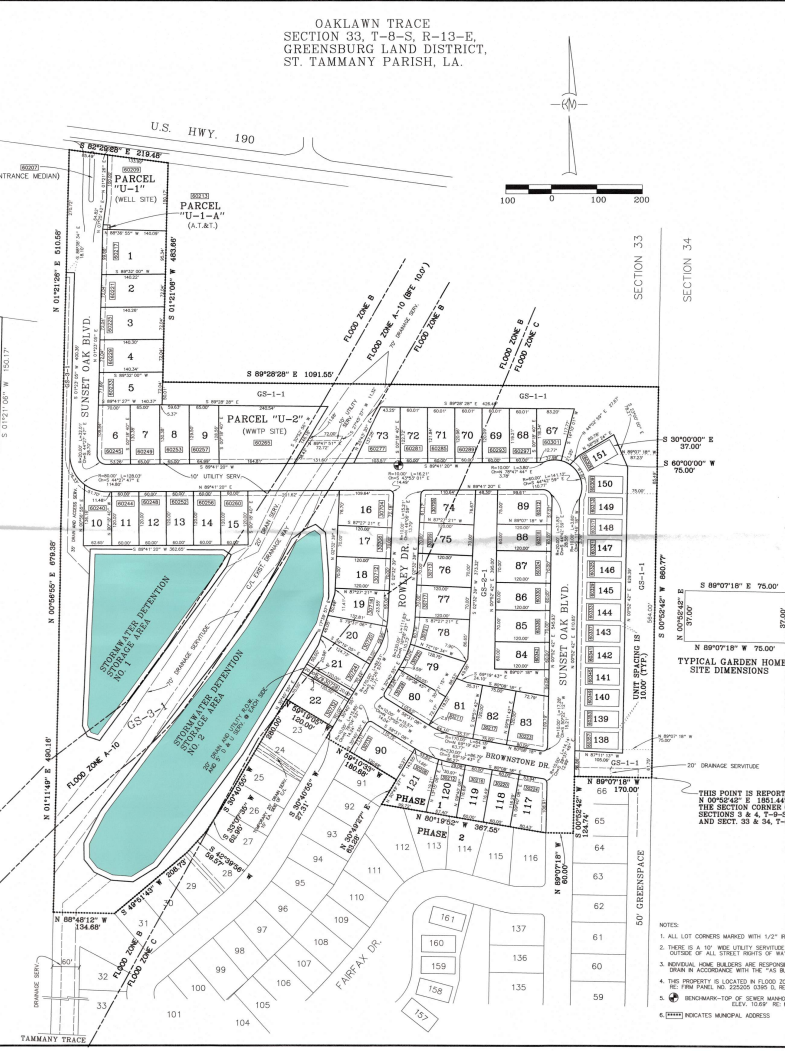
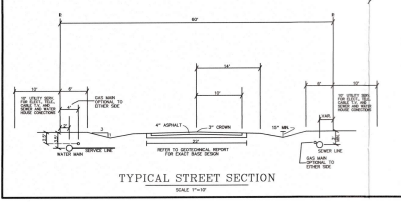
Thence North 89°07'18" West a distance of 510.58 feet to a point;

Thence North 89°07'18" West a distance of 483.65 feet to a point;

Thence North 89°07'18" West a distance of 102.150 feet to a point;

Thence North 89°07'18" West a distance of 860.77 feet to a point;

Thence North 89°07'18" West a distance of 134.121326 square feet or 30.798 acres of land, more or less.



RESTRICTIVE COVENANTS

1. EACH LOT WILL NOT HAVE MORE THAN ONE DWELLING.
2. NO OPERATIONS OF BUSINESS SHALL BE PERMITTED WITHIN THE WETLANDS AND WATER SYSTEMS ARE INSTALLED AND OPERABLE OR OTHERWISE CONNECTED TO A COMMUNITY WATER SUPPLY SYSTEM. ANY BUSINESS OPERATIONS SHALL BE LIMITED TO THE USE OF A SUBSIDIZED OR COMMUNITY (CONTROL) WATER SYSTEM (SUPPLY) AND SHALL BE LIMITED TO THE USE OF A SUBSIDIZED OR COMMUNITY (CONTROL) WATER SYSTEM (SUPPLY) AND SHALL BE LIMITED TO THE USE OF A SUBSIDIZED OR COMMUNITY (CONTROL) WATER SYSTEM (SUPPLY).
3. NO OPERATIONS OF BUSINESS SHALL BE PERMITTED WITHIN THE WETLANDS AND WATER SYSTEMS ARE INSTALLED AND OPERABLE OR OTHERWISE CONNECTED TO A COMMUNITY WATER SUPPLY SYSTEM. ANY BUSINESS OPERATIONS SHALL BE LIMITED TO THE USE OF A SUBSIDIZED OR COMMUNITY (CONTROL) WATER SYSTEM (SUPPLY) AND SHALL BE LIMITED TO THE USE OF A SUBSIDIZED OR COMMUNITY (CONTROL) WATER SYSTEM (SUPPLY).
4. NO OPERATIONS OF BUSINESS SHALL BE PERMITTED WITHIN THE WETLANDS AND WATER SYSTEMS ARE INSTALLED AND OPERABLE OR OTHERWISE CONNECTED TO A COMMUNITY WATER SUPPLY SYSTEM. ANY BUSINESS OPERATIONS SHALL BE LIMITED TO THE USE OF A SUBSIDIZED OR COMMUNITY (CONTROL) WATER SYSTEM (SUPPLY) AND SHALL BE LIMITED TO THE USE OF A SUBSIDIZED OR COMMUNITY (CONTROL) WATER SYSTEM (SUPPLY).
5. NO OPERATIONS OF BUSINESS SHALL BE PERMITTED WITHIN THE WETLANDS AND WATER SYSTEMS ARE INSTALLED AND OPERABLE OR OTHERWISE CONNECTED TO A COMMUNITY WATER SUPPLY SYSTEM. ANY BUSINESS OPERATIONS SHALL BE LIMITED TO THE USE OF A SUBSIDIZED OR COMMUNITY (CONTROL) WATER SYSTEM (SUPPLY) AND SHALL BE LIMITED TO THE USE OF A SUBSIDIZED OR COMMUNITY (CONTROL) WATER SYSTEM (SUPPLY).
6. NO OPERATIONS OF BUSINESS SHALL BE PERMITTED WITHIN THE WETLANDS AND WATER SYSTEMS ARE INSTALLED AND OPERABLE OR OTHERWISE CONNECTED TO A COMMUNITY WATER SUPPLY SYSTEM. ANY BUSINESS OPERATIONS SHALL BE LIMITED TO THE USE OF A SUBSIDIZED OR COMMUNITY (CONTROL) WATER SYSTEM (SUPPLY) AND SHALL BE LIMITED TO THE USE OF A SUBSIDIZED OR COMMUNITY (CONTROL) WATER SYSTEM (SUPPLY).
7. NO OPERATIONS OF BUSINESS SHALL BE PERMITTED WITHIN THE WETLANDS AND WATER SYSTEMS ARE INSTALLED AND OPERABLE OR OTHERWISE CONNECTED TO A COMMUNITY WATER SUPPLY SYSTEM. ANY BUSINESS OPERATIONS SHALL BE LIMITED TO THE USE OF A SUBSIDIZED OR COMMUNITY (CONTROL) WATER SYSTEM (SUPPLY) AND SHALL BE LIMITED TO THE USE OF A SUBSIDIZED OR COMMUNITY (CONTROL) WATER SYSTEM (SUPPLY).
8. NO OPERATIONS OF BUSINESS SHALL BE PERMITTED WITHIN THE WETLANDS AND WATER SYSTEMS ARE INSTALLED AND OPERABLE OR OTHERWISE CONNECTED TO A COMMUNITY WATER SUPPLY SYSTEM. ANY BUSINESS OPERATIONS SHALL BE LIMITED TO THE USE OF A SUBSIDIZED OR COMMUNITY (CONTROL) WATER SYSTEM (SUPPLY) AND SHALL BE LIMITED TO THE USE OF A SUBSIDIZED OR COMMUNITY (CONTROL) WATER SYSTEM (SUPPLY).
9. NO OPERATIONS OF BUSINESS SHALL BE PERMITTED WITHIN THE WETLANDS AND WATER SYSTEMS ARE INSTALLED AND OPERABLE OR OTHERWISE CONNECTED TO A COMMUNITY WATER SUPPLY SYSTEM. ANY BUSINESS OPERATIONS SHALL BE LIMITED TO THE USE OF A SUBSIDIZED OR COMMUNITY (CONTROL) WATER SYSTEM (SUPPLY) AND SHALL BE LIMITED TO THE USE OF A SUBSIDIZED OR COMMUNITY (CONTROL) WATER SYSTEM (SUPPLY).
10. NO OPERATIONS OF BUSINESS SHALL BE PERMITTED WITHIN THE WETLANDS AND WATER SYSTEMS ARE INSTALLED AND OPERABLE OR OTHERWISE CONNECTED TO A COMMUNITY WATER SUPPLY SYSTEM. ANY BUSINESS OPERATIONS SHALL BE LIMITED TO THE USE OF A SUBSIDIZED OR COMMUNITY (CONTROL) WATER SYSTEM (SUPPLY) AND SHALL BE LIMITED TO THE USE OF A SUBSIDIZED OR COMMUNITY (CONTROL) WATER SYSTEM (SUPPLY).
11. NO OPERATIONS OF BUSINESS SHALL BE PERMITTED WITHIN THE WETLANDS AND WATER SYSTEMS ARE INSTALLED AND OPERABLE OR OTHERWISE CONNECTED TO A COMMUNITY WATER SUPPLY SYSTEM. ANY BUSINESS OPERATIONS SHALL BE LIMITED TO THE USE OF A SUBSIDIZED OR COMMUNITY (CONTROL) WATER SYSTEM (SUPPLY) AND SHALL BE LIMITED TO THE USE OF A SUBSIDIZED OR COMMUNITY (CONTROL) WATER SYSTEM (SUPPLY).
12. NO OPERATIONS OF BUSINESS SHALL BE PERMITTED WITHIN THE WETLANDS AND WATER SYSTEMS ARE INSTALLED AND OPERABLE OR OTHERWISE CONNECTED TO A COMMUNITY WATER SUPPLY SYSTEM. ANY BUSINESS OPERATIONS SHALL BE LIMITED TO THE USE OF A SUBSIDIZED OR COMMUNITY (CONTROL) WATER SYSTEM (SUPPLY) AND SHALL BE LIMITED TO THE USE OF A SUBSIDIZED OR COMMUNITY (CONTROL) WATER SYSTEM (SUPPLY).

DEDICATION

ALL RIGHTS OF WAY AS SHOWN HEREON ARE HEREBY DEDICATED TO THE PUBLIC FOR THE PURPOSES OF STREETS, DRAINAGE, SEWERAGE, STORMWATER DETENTION AREAS, STREET LIGHTS, AND UTILITIES. THE DEDICATION IS SUBJECT TO THE APPROVAL OF THE ST. TAMMANY PARISH PLANNING COMMISSION.

APPROVED: *[Signature]* DATE: 7-20-20

SECRETARY OF ST. TAMMANY PARISH PLANNING COMMISSION

CLERK OF COURT: Pamela M. Tapp, Deputy Clerk

FOR: AME DEVELOPMENT LLC CORPORATION

IN WITNESS WHEREOF, I have hereunto set my hand and the seal of the corporation at Metairie, Louisiana, this 20th day of July, 2020.

210 HONOR BEACH RD. SUITE 100, METairie, LA 70001

ADDRESS

OAKLAWN TRACE, PHASE 1, SECTION 33, T-8-S, R-13-E, GREENSBURG LAND DISTRICT, ST. TAMMANY PARISH, LA.

KELLY V. McHUGH & ASSOC., INC. CIVIL ENGINEERS & LAND SURVEYORS 845 GALEZ ST. - WABDEVILLE, LA 70056

DATE	BY	REVISION
07-20-20	KVM	1. INITIAL DESIGN
07-20-20	KVM	2. FINAL DESIGN
07-20-20	KVM	3. AS-BUILT

SCALE: 1" = 100'

DATE: 07-20-20

PROJECT: OAKLAWN TRACE, PHASE 1, SECTION 33, T-8-S, R-13-E, GREENSBURG LAND DISTRICT, ST. TAMMANY PARISH, LA.

DRAWN: KVM

CHECKED: KVM

DATE: 07-20-20

PROJECT: OAKLAWN TRACE, PHASE 1, SECTION 33, T-8-S, R-13-E, GREENSBURG LAND DISTRICT, ST. TAMMANY PARISH, LA.