

ST. TAMMANY PARISH COUNCIL

ORDINANCE

ORDINANCE CALENDAR NO: 6243AA ORDINANCE COUNCIL SERIES NO: _____

COUNCIL SPONSOR: MR. LORINO PROVIDED BY: COUNCIL OFFICE

INTRODUCED BY: MR. BELLISARIO SECONDED BY: MR. TOLEDANO

ON THE 7 DAY OF NOVEMBER , 2019

ORDINANCE TO AMEND PRECINCT BOUNDARY LEGAL DESCRIPTIONS WITHIN ST. TAMMANY PARISH TO COMPLY WITH THE LOUISIANA SECRETARY OF STATE’S OFFICE REGULATIONS.

WHEREAS, the St. Tammany Registrar of Voter’s Office, the St. Tammany Parish Council Office, and the Louisiana Secretary of State have deemed it necessary to revise language of three (3) precinct legal boundary descriptions (Precinct 910, Precint S21, Precinct S22) to provide improved geographical clarity. Revised Decriptions and Maps Attached.

WHEREAS, said amendments are to provide improved geogrpahical clarity and do not impact voters, voter precincts, voter districts or polling locations.

THE PARISH OF ST. TAMMANY HEREBY ORDAINS: TO AMEND PRECINCT BOUNDARY DESCRIPTIONS WITHIN ST. TAMMANY PARISH TO COMPLY WITH THE LOUISIANA SECRETARY OF STATE’S OFFICE REGULATIONS.

REPEAL: All ordinances or parts of Ordinances in conflict herewith are hereby repealed.

SEVERABILITY: If any provision of this Ordinance shall be held to be invalid, such invalidity shall not affect other provisions herein which can be given effect without the invalid provision and to this end the provisions of this Ordinance are hereby declared to be severable.

EFFECTIVE DATE: This Ordinance shall become effective fifteen (15) days after adoption.

MOVED FOR ADOPTION BY: _____ SECONDED BY: _____

WHEREUPON THIS ORDINANCE WAS SUBMITTED TO A VOTE AND RESULTED IN THE FOLLOWING:

YEAS: _____

NAYS: _____

ABSTAIN: _____

ABSENT: _____

THIS ORDINANCE WAS DECLARED DULY ADOPTED AT A REGULAR MEETING OF THE PARISH COUNCIL ON THE 5 DAY OF DECEMBER , 2019 ; AND BECOMES ORDINANCE COUNCIL SERIES NO _____.

MICHAEL R. LORINO, JR. , COUNCIL CHAIRMAN

ATTEST:

THERESA L. FORD, COUNCIL CLERK

PATRICIA P. BRISTER, PARISH PRESIDENT

Published Introduction: SEPTEMBER 25 , 2019

Published Adoption: _____, 2019

Delivered to Parish President: _____, 2019 at _____

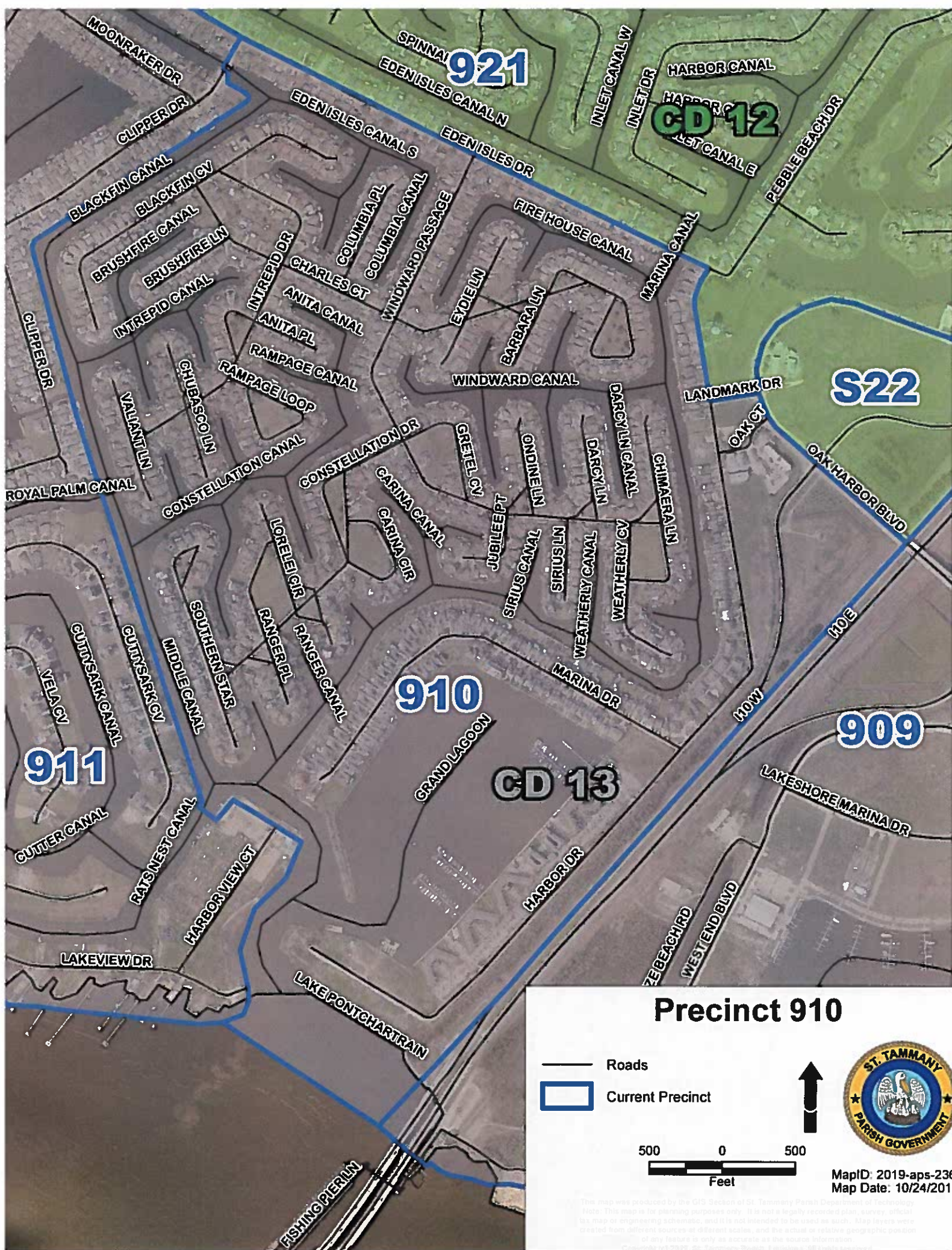
Returned to Council Clerk: _____, 2019 at _____

Precinct 910 (current legal description)

Commence at the intersection of Moonraker Drive and Eden Isles Blvd., also the point of beginning; thence follow Eden Isles Blvd. southeast to its intersection with Howze Beach Road; thence follow Howze Beach Road southwest to its intersection with an unnamed stream; thence follow the unnamed stream southeast to its intersection with I-10; thence follow I-10 southwest to its intersection with the shoreline of Lake Pontchartrain; thence follow the shoreline of Lake Pontchartrain northwest to its intersection with the mouth of Grand Lagoon; thence follow Grand Lagoon northeast to its intersection with the Diversion Canal; thence follow the Diversion Canal northwest, northeast, and northwest to its intersection with the bridge on Moonraker Drive; thence follow Moonraker Drive northeast to its intersection with Eden Isles Blvd., also the point of beginning.

Precinct 910 (revised legal description)

Commence at the intersection of Clipper Drive and Eden Isles Drive., also the point of beginning; thence follow Eden Isles Drive southeast to its intersection with Marina Drive; thence follow Marina Drive to its intersection with Landmark Drive; thence follow Landmark Drive to its intersection with Oak Harbor Blvd.; thence follow Oak Harbor Blvd. to its intersection with I-10; thence follow I-10 southwest to its intersection with the shoreline of Lake Pontchartrain; thence follow the shoreline of Lake Pontchartrain northwest to its intersection with the mouth of Oak Harbor Pass; thence follow Oak Harbor Pass northwest, northeast, and northwest to its intersection with Middle Canal; thence follow Middle Canal northwest to its intersection with Blackfin Canal; thence follow Blackfin Canal northeast to its intersection with Eden Isles Canal S, thence follow Eden Isles Canal S northwest to its intersection with the bridge on Clipper Dr; thence follow Clipper Dr northeast to its intersection with Eden Isles drive., also the point of beginning.

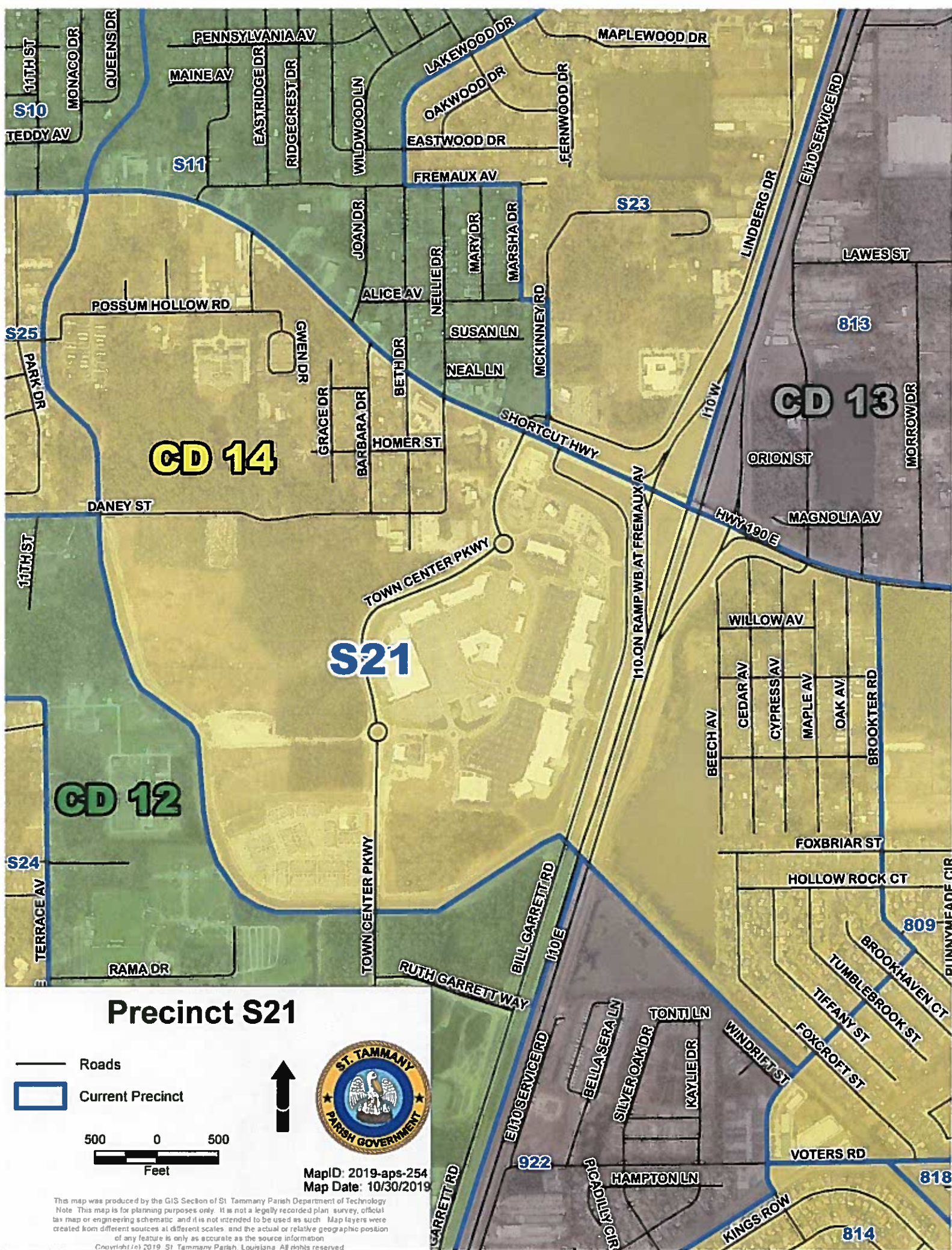


Precinct S21 (current legal description)

Commence at the intersection of Highway 190 East and Brookter Road, also the point of beginning; thence follow Brookter Road south and southeast to its intersection with Kingspoint Road; thence follow Kingspoint Road southwest to its intersection with Windrift Drive; thence follow Windrift Drive northwest to its intersection with the W-14 Canal; thence follow the W-14 Canal continuing northwest, then southwest, west, northwest, north, northwest, north, and northeast to its intersection with Fremaux Avenue; thence follow Fremaux Avenue east becoming Highway 190 East; thence follow Highway 190 East continuing east, then southeast to its intersection with Brookter Road, also the point of beginning.

Precinct S21 (revised legal description)

Commence at the intersection of Highway 190 East and Brookter Road, also the point of beginning; thence follow Brookter Road south and southeast to its intersection with Kingspoint Road; thence follow Kingspoint Road southwest to its intersection with the W-14 Canal; thence follow the W-14 Canal continuing northwest, then southwest, west, northwest, north, northwest, north, and northeast to its intersection with Fremaux Avenue; thence follow Fremaux Avenue east becoming Highway 190 East; thence follow Highway 190 East continuing east, then southeast to its intersection with Brookter Road, also the point of beginning.



Precinct S22 (current legal description)

Commence at the intersection of Eden Isle Blvd. and Oak Harbor Blvd., also the point of beginning; thence follow Oak Harbor Blvd. east, northeast, west, southwest, north, and west to its intersection with Hwy. 11; thence follow Hwy. 11 northeast to its intersection with Schneider Canal; thence follow Schneider Canal east, southeast, east, and southeast to its intersection with West Howze Beach Road; thence follow West Howze Beach Road northeast to its intersection with Hwy. 433 (Old Spanish Trail); thence follow Hwy. 433 (Old Spanish Trail) northwest to its intersection with Terrance Avenue; thence follow Terrance Avenue northeast and north to its intersection with Ash Street; thence follow Ash Street west to its intersection with 10th Avenue; thence follow 10th Avenue north to its intersection with Daney Street; thence follow Daney Street east to its intersection with the W-14 Canal; thence follow the meanderings of the W-14 Canal southeast, east, and northeast to its intersection with I-10; thence follow I-10 southwest to its intersection with an unnamed stream; thence follow the unnamed stream northwest to its intersection with the I-10 Service Road; thence follow the I-10 Service Road northeast to its intersection with Eden Isles Blvd.; thence follow Eden Isles Blvd. northwest to its intersection with Oak Harbor Blvd., also the point of beginning.

Precinct S22 (revised legal description)

Commence at the intersection of Landmark Drive and Oak Harbor Blvd., also the point of beginning; thence follow Oak Harbor Blvd. north, east, northeast, west, and northwest to its intersection with Hwy. 11; thence follow Hwy. 11 northeast to its intersection with Schneider Canal; thence follow Schneider Canal east, southeast, east, and southeast to its intersection with West Howze Beach Road; thence follow West Howze Beach Road northeast to its intersection with Hwy. 433 (Old Spanish Trail); thence follow Hwy. 433 (Old Spanish Trail) northwest to its intersection with East Terrance Avenue; thence follow Terrance Avenue northeast and north to its intersection with Ash Street; thence follow Ash Street west to its intersection with 10th Street; thence follow 10th Street north to its intersection with Daney Street; thence follow Daney Street east to its intersection with the W-14 Canal; thence follow the meanderings of the W-14 Canal southeast, east, and northeast to its intersection with I-10; thence follow I-10 southwest to its intersection with the Oak Harbor Blvd. bridge; thence follow Oak Harbor Blvd. northwest to the intersection of Landmark Drive; also the point of beginning.

