

ST. TAMMANY PARISH COUNCIL

ORDINANCE

ORDINANCE CALENDAR NO: 6284                      ORDINANCE COUNCIL SERIES NO: \_\_\_\_\_  
COUNCIL SPONSOR: LORINO/BRISTER                      PROVIDED BY: PLANNING DEVELOPMENT  
INTRODUCED BY: MR. DEAN                      SECONDED BY: MR. STEFANCIK  
ON THE 7 DAY OF NOVEMBER , 2019

(2019-1530-ZC) AN ORDINANCE AMENDING THE OFFICIAL ZONING MAP OF ST. TAMMANY PARISH, LA, TO RECLASSIFY A CERTAIN PARCEL LOCATED ON THE SOUTH & WEST SIDES OF OCHSNER, WEST OF LA HIGHWAY 21, COVINGTON AND WHICH PROPERTY COMPRISES A TOTAL OF 69.46 ACRES OF LAND MORE OR LESS, FROM ITS PRESENT PBC-2 (PLANNED BUSINESS CENTER) TO AN AML (ADVANCED MANUFACTURING AND LOGISTICS DISTRICT) (WARD 1, DISTRICT 1). (2019-1530-ZC)

WHEREAS, the Zoning Commission of the Parish of St. Tammany after hearing in accordance with law, Case No. 2019-1530-ZC the motion to approve failed and that the zoning classification of the above referenced area remains PBC-2 (Planned Business Center) and;

WHEREAS, the St. Tammany Parish Council has held its public hearing in accordance with law; and

WHEREAS, the St. Tammany Parish Council has found it necessary for the purpose of protecting the public health, safety and general welfare, to designate the above described property as AML (Advanced Manufacturing and Logistics District) see Exhibit "A" for complete.

THE PARISH OF ST. TAMMANY HEREBY ORDAINS, in regular session convened that:

SECTION I: The zoning classification of the above described property is hereby changed from its present PBC-2 (Planned Business Center) to an AML (Advanced Manufacturing and Logistics District).

SECTION II: The official zoning map of the Parish of St. Tammany shall be and is hereby amended to incorporate the zoning reclassification specified in Section I hereof.

REPEAL: All ordinances or parts of Ordinances in conflict herewith are hereby repealed.

SEVERABILITY: If any provision of this Ordinance shall be held to be invalid, such invalidity shall not affect other provisions herein which can be given effect without the invalid provision and to this end the provisions of this Ordinance are hereby declared to be severable.

EFFECTIVE DATE: This Ordinance shall become effective fifteen (15) days after adoption.

MOVED FOR ADOPTION BY: \_\_\_\_\_ SECONDED BY: \_\_\_\_\_

WHEREUPON THIS ORDINANCE WAS SUBMITTED TO A VOTE AND RESULTED IN THE FOLLOWING:

YEAS: \_\_\_\_\_

NAYS: \_\_\_\_\_

ABSTAIN: \_\_\_\_\_

ABSENT: \_\_\_\_\_

THIS ORDINANCE WAS DECLARED DULY ADOPTED AT A REGULAR MEETING OF THE PARISH COUNCIL ON THE 5 DAY OF DECEMBER , 2019 ; AND BECOMES ORDINANCE COUNCIL SERIES NO \_\_\_\_\_.

\_\_\_\_\_  
MICHAEL R. LORINO, JR. , COUNCIL CHAIRMAN

ATTEST:

\_\_\_\_\_  
THERESA L. FORD, COUNCIL CLERK

\_\_\_\_\_  
PATRICIA P. BRISTER, PARISH PRESIDENT

Published Introduction: NOVEMBER 28 , 2019

Published Adoption: \_\_\_\_\_, 2019

Delivered to Parish President: \_\_\_\_\_, 2019 at \_\_\_\_\_

Returned to Council Clerk: \_\_\_\_\_, 2019 at \_\_\_\_\_

EXHIBIT "A"

2019-1530-ZC

LEGAL DESCRIPTION OF PARCEL 7A1-AD2

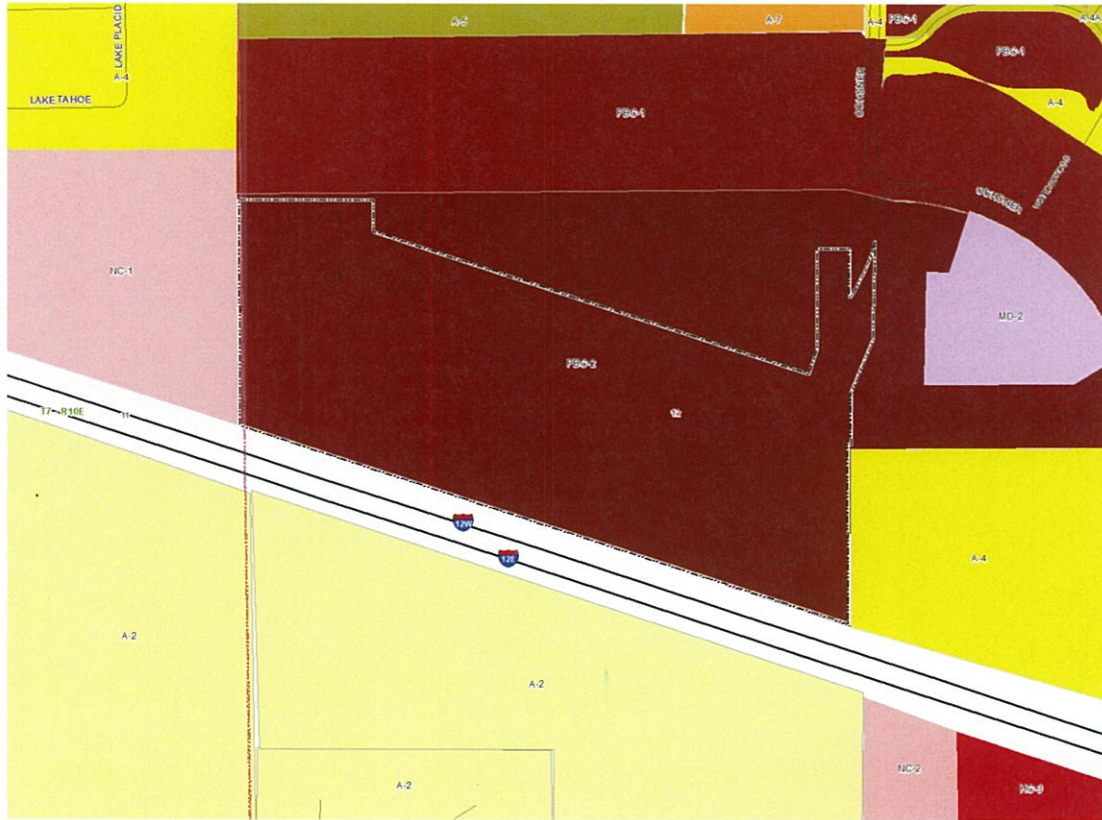
A CERTAIN PIECE OR PORTION OF LAND SITUATED IN SECTION 12, TOWNSHIP 7 SOUTH, RANGE 10 EAST, ST. TAMMANY PARISH, LOUISIANA BEING MORE FULLY DESCRIBED AS FOLLOWS:

FROM THE SECTION CORNER COMMON TO SECTIONS 12, 45, & 46 TOWNSHIP 7 SOUTH, RANGE 10 EAST, ST. TAMMANY PARISH, LOUISIANA RUN SOUTH 89 DEGREES 35 MINUTES 32 SECONDS WEST FOR A DISTANCE OF 842.45 FEET TO A POINT; THENCE RUN SOUTH 89 DEGREES 32 MINUTES 41 SECONDS WEST FOR A DISTANCE OF 1185.42 FEET TO A POINT ON THE WEST RIGHT-OF-WAY LINE OF OCHSNER BOULEVARD EXTENSION; THENCE CONTINUING ALONG SAID WEST RIGHT-OF-WAY LINE RUN SOUTH 01 DEGREES 37 MINUTES 31 SECONDS WEST FOR A DISTANCE OF 619.37 FEET TO A POINT; THENCE CONTINUE ALONG SAID WEST RIGHT-OF-WAY LINE OF OCHSNER BOULEVARD EXTENSION THE FOLLOWING COURSES: SOUTH 01 DEGREES 37 MINUTES 31 SECONDS WEST FOR A DISTANCE OF 555.98 FEET TO A POINT ON A CURVE TO THE RIGHT (CLOCKWISE & TANGENT); THENCE RUN ALONG SAID CURVE WITH A RADIUS OF 75.00 FEET, AN ARC LENGTH OF 23.83 FEET, A CHORD BEARING OF SOUTH 10 DEGREES 43 MINUTES 38 SECONDS WEST AND A CHORD LENGTH OF 23.73 FEET TO A POINT ON A CURVE TO THE RIGHT (CLOCKWISE & NON-TANGENT); THENCE RUN ALONG SAID CURVE WITH A RADIUS OF 135.00 FEET, AN ARC LENGTH OF 52.96 FEET, A CHORD BEARING OF SOUTH 31 DEGREES 04 MINUTES 07 SECONDS WEST AND A CHORD LENGTH OF 52.62 FEET TO A POINT ON A CURVE TO THE LEFT (COUNTERCLOCKWISE & TANGENT); THENCE RUN ALONG SAID CURVE WITH A RADIUS OF 105.00 FEET, AN ARC LENGTH OF 181.48 FEET, A CHORD BEARING OF SOUTH 07 DEGREES 12 MINUTES 24 SECONDS EAST AND A CHORD LENGTH OF 159.72 FEET TO A POINT ON A CURVE TO THE RIGHT (CLOCKWISE & NON-TANGENT); THENCE RUN ALONG SAID CURVE WITH A RADIUS OF 40.00 FEET, AN ARC LENGTH OF 17.22 FEET, A CHORD BEARING OF SOUTH 10 DEGREES 31 MINUTES 31 SECONDS EAST AND A CHORD LENGTH OF 17.09 FEET TO A POINT ON A CURVE TO THE LEFT (COUNTERCLOCKWISE & NON-TANGENT); THENCE LEAVING SAID RIGHT-OF-WAY, RUN ALONG SAID CURVE WITH A RADIUS OF 119.23 FEET, AN ARC LENGTH OF 24.85 FEET, A CHORD BEARING OF SOUTH 56 DEGREES 59 MINUTES 58 SECONDS EAST AND A CHORD LENGTH OF 24.80 FEET TO A POINT ON A CURVE TO THE LEFT (COUNTERCLOCKWISE & TANGENT); THENCE RUN ALONG SAID CURVE WITH A RADIUS OF 122.00 FEET, AN ARC LENGTH OF 83.03 FEET, A CHORD BEARING OF SOUTH 70 DEGREES 31 MINUTES 30 SECONDS EAST AND A CHORD LENGTH OF 81.43 FEET TO A POINT; THENCE LEAVING SAID CURVE, RUN SOUTH 89 DEGREES 58 MINUTES 43 SECONDS WEST FOR A DISTANCE OF 84.45 FEET TO THE POINT; THENCE RUN SOUTH 00 DEGREES 01 MINUTES 17 SECONDS EAST FOR A DISTANCE OF 212.37 FEET TO THE POINT OF BEGINNING.

FROM THE POINT OF BEGINNING, RUN NORTH 89 DEGREES 58 MINUTES 43 SECONDS EAST FOR A DISTANCE OF 143.97 FEET TO A POINT; THENCE RUN SOUTH 00 DEGREES 28 MINUTES 41 SECONDS EAST FOR A DISTANCE OF 214.87 FEET TO A POINT ON A CURVE TO THE LEFT (COUNTER-CLOCKWISE & NON-TANGENT); THENCE RUN ALONG SAID CURVE WITH A RADIUS OF 800.00 FEET, AN ARC LENGTH OF 273.51 FEET, A CHORD BEARING OF NORTH 24 DEGREES 31 MINUTES 11 SECONDS EAST AND A CHORD LENGTH OF 272.18 FEET TO A POINT; THENCE LEAVING SAID CURVE, RUN SOUTH 01 DEGREE 39 MINUTES 49 SECONDS WEST FOR A DISTANCE OF 436.65 FEET TO A POINT; THENCE RUN SOUTH 22 DEGREES 37 MINUTES 58 SECONDS WEST FOR A DISTANCE OF 253.45 FEET TO A POINT; THENCE RUN SOUTH 00 DEGREES 50 MINUTES 57 SECONDS EAST FOR A DISTANCE OF 232.38 FEET TO A POINT; THENCE RUN SOUTH 89 DEGREES 42 MINUTES 27 SECONDS WEST FOR A DISTANCE OF 15.54 FEET TO A POINT; THENCE RUN SOUTH 00 DEGREES 28 MINUTES 41 SECONDS EAST FOR A DISTANCE OF 801.37 FEET TO A POINT; THENCE RUN NORTH 72 DEGREES 00 MINUTES 54 SECONDS WEST FOR A DISTANCE OF 2856.22 FEET TO A POINT; THENCE RUN NORTH 00 DEGREES 19 MINUTES 28 SECONDS WEST FOR A DISTANCE OF 1000.88 FEET TO A POINT; THENCE RUN NORTH 89 DEGREES 58 MINUTES 43 SECONDS EAST FOR A DISTANCE OF 600.83 FEET TO A POINT; THENCE RUN SOUTH 00 DEGREES 23 MINUTES 11 SECONDS EAST FOR A DISTANCE OF 139.02 FEET TO A POINT; THENCE RUN SOUTH 72 DEGREES 00 MINUTES 54 SECONDS EAST FOR A DISTANCE OF 2039.98 FEET TO A POINT; THENCE RUN NORTH 18 DEGREES 00 MINUTES 18 SECONDS EAST FOR A DISTANCE OF 120.76 FEET TO A POINT; THENCE RUN NORTH 00 DEGREES 01 MINUTE 17 SECONDS WEST FOR A DISTANCE OF 442.41 FEET BACK TO THE POINT OF BEGINNING.

SAID PARCEL OF LAND CONTAINS 69.46 ACRES MORE OR LESS.

**SIZE:** 69.46 acres





2019-1530-ZC

A-4

A-5

A-7

OCHSNER  
A-4

PBC-1

A-4A

PBC-1

A-4

PBC-1

NC-1

PBC-2

MD-2

11

T7S - R10E

12

A-4

A-2

CHRISTINE  
MURPHY

A-2

AMELIA

TAYLOR

A-2

NC-2

CBF-1

BREWSTER

14

A-2

FAIROAKS

A-3

13

SHADY OAKS

WICKFIELD

A-4

WOODLAWN