

ST. TAMMANY PARISH COUNCIL

ORDINANCE

ORDINANCE CALENDAR NO: 5739                      ORDINANCE COUNCIL SERIES NO: \_\_\_\_\_

COUNCIL SPONSOR: STEFANCIK/BRISTER            PROVIDED BY: LEGAL DEPARTMENT

INTRODUCED BY: MR. LORINO                      SECONDED BY: MR. TANNER

ON THE 5 DAY OF JANUARY , 2017

ORDINANCE TO AUTHORIZE THE PARISH OF ST. TAMMANY, THROUGH THE OFFICE OF THE PARISH PRESIDENT, TO PURCHASE OR OTHERWISE ACQUIRE CERTAIN PARCELS, RIGHTS OF WAY, AND/OR SERVITUDES FOR THE RIVER GLEN DRAINAGE PROJECT (WARD 3, DISTRICT 2).

WHEREAS, St. Tammany Parish Government desires to acquire servitudes upon certain immovable property (hereinafter referred to as "Property"); and

WHEREAS, there is a need an a public purpose for the acquisition of servitudes upon certain immovable property for drainage improvements; and

WHEREAS, St. Tammany Parish Government hereby desires to acquire the Property, rights of way and/or servitudes and authorizes the Office of the Parish President to do whatever is necessary to enter into negotiations and acquire said Property, servitudes and/or rights of way.

THE PARISH OF ST. TAMMANY HEREBY ORDAINS: to authorize the Parish of St. Tammany to acquire by purchase, donation or servitude, all or parts of those proposed drainage servitudes and/or rights of way described and depicted in Exhibit "A" attached hereto; and

BE IT FURTHER ORDAINED that pursuant to all applicable provisions of law, the Office of the Parish President is directed and authorized to do whatever is necessary to acquire the Property; and

BE IT FURTHER ORDAINED that the Office of the Parish President is authorized and instructed to proceed with the acquisition of the Property in a timely and orderly manner; and

BE IT FURTHER ORDAINED that the Office of the Parish President is authorized to exercise its discretion in acquiring the Property, together with all agreements and all transactions necessary to carry out the intent of this Ordinance; and

BE IT FURTHER ORDAINED that, if purchased, the purchase price shall not exceed the fair market value of the Property as evidenced by an appraisal obtained or supplied to the Parish plus fees and costs; and

BE IT FURTHER ORDAINED that any and all actions previously taken by the Office of the Parish President in furtherance of the actions contemplated herein are ratified and accepted accordingly.

REPEAL: All ordinances or parts of Ordinances in conflict herewith are hereby repealed.

SEVERABILITY: If any provision of this Ordinance shall be held to be invalid, such invalidity shall not affect other provisions herein which can be given effect without the invalid provision and to this end the provisions of this Ordinance are hereby declared to be severable.

EFFECTIVE DATE: This Ordinance shall become effective fifteen (15) days after adoption.

MOVED FOR ADOPTION BY: \_\_\_\_\_ SECONDED BY: \_\_\_\_\_

WHEREUPON THIS ORDINANCE WAS SUBMITTED TO A VOTE AND RESULTED IN THE FOLLOWING:

YEAS: \_\_\_\_\_

NAYS: \_\_\_\_\_

ABSTAIN: \_\_\_\_\_

ABSENT: \_\_\_\_\_

THIS ORDINANCE WAS DECLARED DULY ADOPTED AT A REGULAR MEETING OF THE PARISH COUNCIL ON THE 2 DAY OF FEBRUARY, 2017; AND BECOMES ORDINANCE COUNCIL SERIES NO \_\_\_\_\_.

\_\_\_\_\_  
STEVE STEFANCIK, COUNCIL CHAIRMAN

ATTEST:

\_\_\_\_\_  
THERESA L. FORD, COUNCIL CLERK

\_\_\_\_\_  
PATRICIA P. BRISTER, PARISH PRESIDENT

Published Introduction: DECEMBER 29, 2016

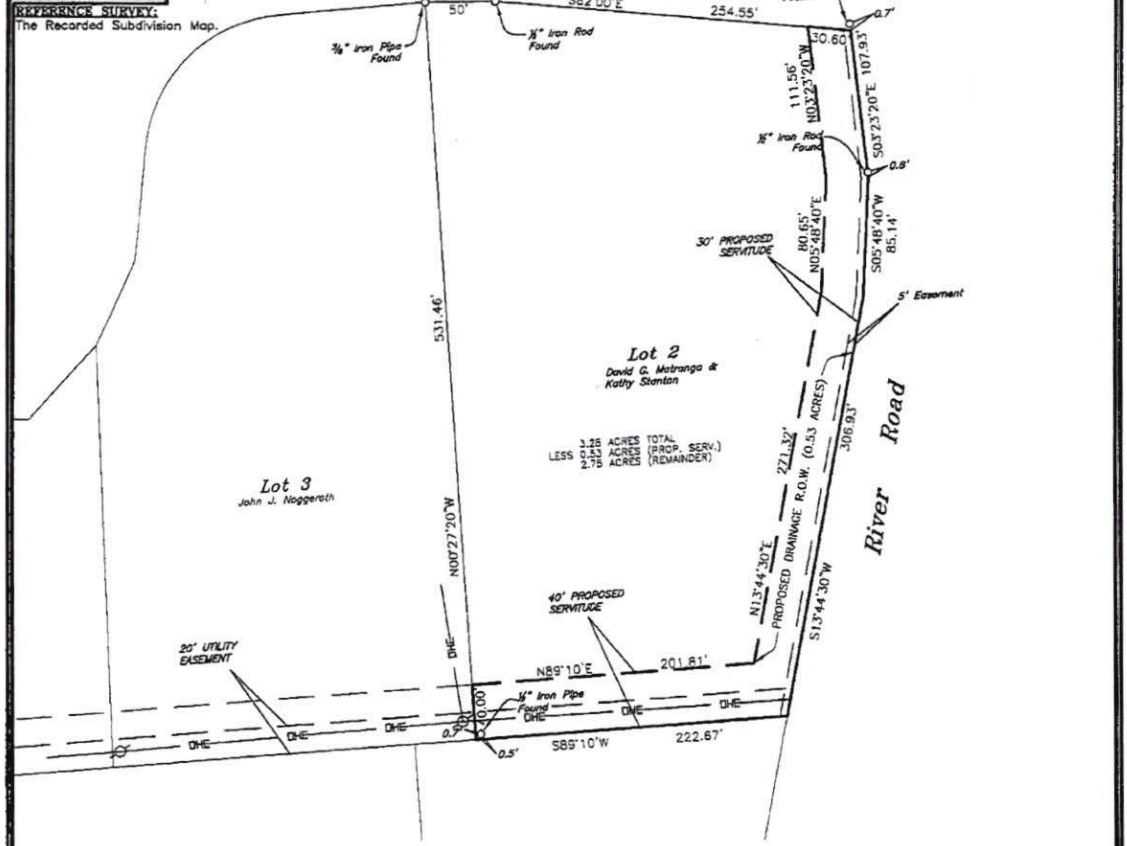
Published Adoption: \_\_\_\_\_, 2017

Delivered to Parish President: \_\_\_\_\_, 2017 at \_\_\_\_\_

Returned to Council Clerk: \_\_\_\_\_, 2017 at \_\_\_\_\_



COPYRIGHT © 2016  
ALL RIGHTS RESERVED  
JOHN E. BONNEAU & ASSOCIATES, INC.



**LEGAL DESCRIPTION:**  
A CERTAIN PIECE OR PORTION OF GROUND SITUATED IN RIVER GLEN ESTATES, PHASE TWO, SECTION 45, T-6-S, R-11-E, ST. TAMMANY PARISH, LOUISIANA AND IS MORE FULLY DESCRIBED AS FOLLOWS:

COMMENCING AT THE SECTION CORNER COMMON TO SECTIONS 21, 22, & 45 TOWNSHIP 6 SOUTH, RANGE 11 EAST, ST. TAMMANY PARISH, LOUISIANA, RUN NORTH 89 DEGREES 30 MINUTES 00 SECONDS EAST FOR A DISTANCE OF 1061.3 FEET TO A POINT; THENCE RUN SOUTH 20 DEGREES 00 MINUTES 00 SECONDS EAST FOR A DISTANCE OF 400.0 FEET TO A POINT; THENCE RUN SOUTH 16 DEGREES 00 MINUTES 00 SECONDS EAST FOR A DISTANCE OF 200.0 FEET TO A POINT; THENCE RUN SOUTH 13 DEGREES 30 MINUTES 00 SECONDS EAST FOR A DISTANCE OF 200.0 FEET; THENCE RUN SOUTH 13 DEGREES 14 MINUTES 30 SECONDS EAST FOR A DISTANCE OF 300.30 FEET; THENCE RUN SOUTH 11 DEGREES 03 MINUTES 30 SECONDS EAST FOR A DISTANCE OF 299.34 FEET; THENCE RUN SOUTH 7 DEGREES 48 MINUTES 40 SECONDS EAST FOR A DISTANCE OF 188.41 FEET; THENCE RUN SOUTH 5 DEGREES 15 MINUTES 40 SECONDS EAST FOR A DISTANCE OF 260.21 FEET; THENCE RUN SOUTH 3 DEGREES 23 MINUTES 20 SECONDS EAST FOR A DISTANCE OF 153.64 FEET TO THE POINT OF BEGINNING.

FROM THE POINT OF BEGINNING, RUN SOUTH 3 DEGREES 23 MINUTES 20 SECONDS EAST FOR A DISTANCE OF 107.93 FEET; THENCE RUN SOUTH 5 DEGREES 48 MINUTES 40 SECONDS WEST FOR A DISTANCE OF 85.14 FEET; THENCE RUN SOUTH 13 DEGREES 44 MINUTES 30 SECONDS WEST FOR A DISTANCE OF 306.93 FEET; THENCE RUN SOUTH 89 DEGREES 10 MINUTES 00 SECONDS WEST FOR A DISTANCE OF 222.67 FEET; THENCE RUN NORTH 00 DEGREES 27 MINUTES 20 SECONDS WEST FOR A DISTANCE OF 40.00 FEET; THENCE RUN NORTH 89 DEGREES 10 MINUTES 00 SECONDS EAST FOR A DISTANCE OF 201.81 FEET; THENCE RUN NORTH 13 DEGREES 44 MINUTES 30 SECONDS EAST FOR A DISTANCE OF 271.32 FEET; THENCE RUN NORTH 5 DEGREES 48 MINUTES 40 SECONDS EAST FOR A DISTANCE OF 80.65 FEET; THENCE RUN NORTH 03 DEGREES 23 MINUTES 20 SECONDS WEST FOR A DISTANCE OF 30.60 FEET; THENCE RUN SOUTH 82 DEGREES 00 MINUTES 00 SECONDS EAST FOR A DISTANCE OF 30.60 FEET BACK TO THE POINT OF BEGINNING.

SAID PARCEL OF LAND CONTAINS 0.53 ACRES OR 22,942.49 SQUARE FEET MORE OR LESS.

THIS IS TO CERTIFY THAT THIS SURVEY WAS DONE UNDER MY DIRECT SUPERVISION AND CONTROL; AND THAT THE SURVEY WAS DONE ON THE GROUND AND IS IN ACCORDANCE WITH THE "MINIMUM STANDARDS FOR PROPERTY BOUNDARY SURVEYS" AS ADOPTED BY THE STATE OF LOUISIANA, BOARD OF REGISTRATION FOR PROFESSIONAL ENGINEERS AND LAND SURVEYORS FOR A CLASS D SURVEY.

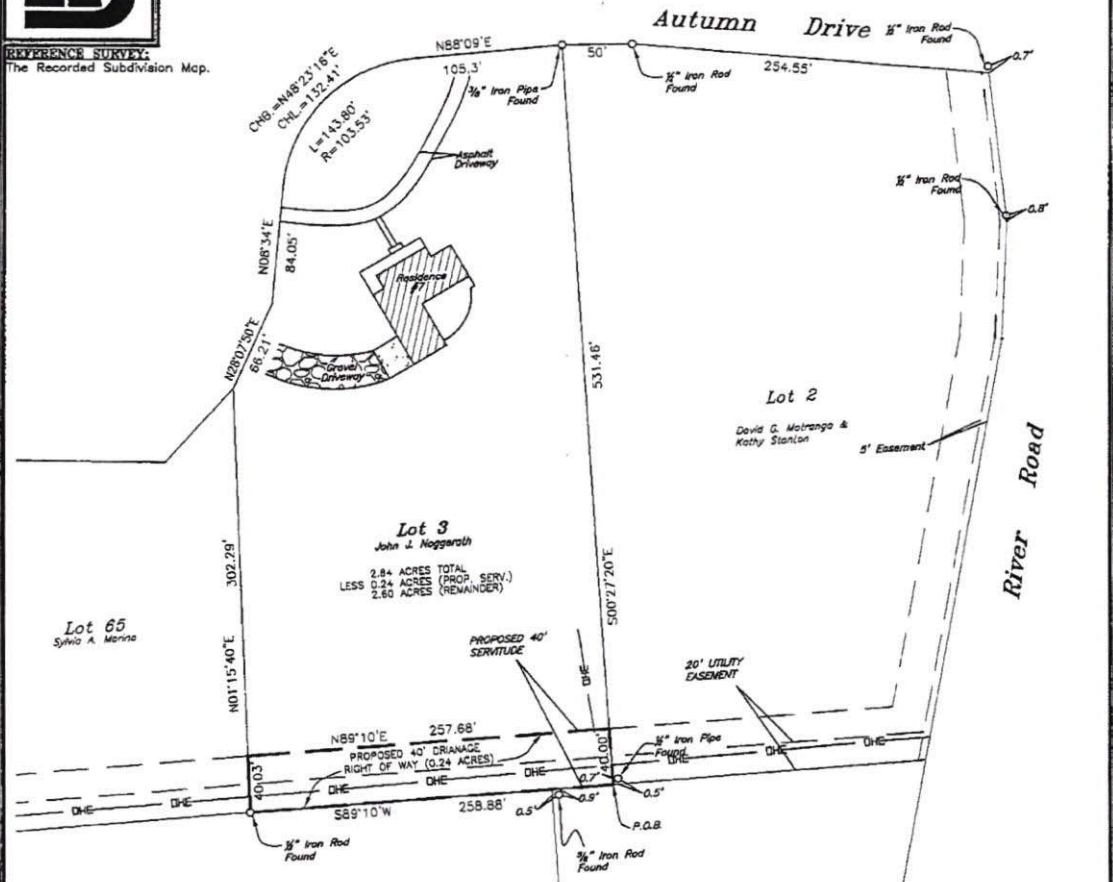
**SURVEY MAP OF**  
**A PROPOSED 40' SERVITUDE BEING A PART OF SERVITUDE OF DRAIN AND PASSAGE, LOT 2, RIVER GLEN ESTATES, PHASE 2,**  
situated in  
SECTION 45, T-6-S, R-11-E  
St. Tammany Parish, Louisiana  
for  
**ST. TAMMANY PARISH GOVERNMENT**

Survey No. 2016 489-2	Drawn by: SPH / JCB	Scale: 1" = 100'	This Survey is Certified True and Correct By
Date: NOVEMBER 2, 2016	Revised:		
<b>JOHN E. BONNEAU &amp; ASSOCIATES, INC.</b>			John E. Bonneau Professional Land Surveyor Registration No. 4423
Professional Land Surveyors • Planners and Consultants			
633 NORTH LOTUS DRIVE • MANDEVILLE, LA 70471			
(985)845-1012 • (985)845-1013 • FAX NO. (985)845-1778 www.JEBCOLandSurveying.com • e-mail: info@jebcosurvey.com			



COPYRIGHT © 2018  
ALL RIGHTS RESERVED  
JOHN E. BONNEAU & ASSOCIATES, INC.

REFERENCE SURVEY:  
The Recorded Subdivision Map.



**LEGAL DESCRIPTION:**  
A CERTAIN PIECE OR PORTION OF GROUND SITUATED IN RIVER GLEN ESTATES, PHASE TWO, SECTION 45, T-6-S, R-11-E, ST. TAMMANY PARISH, LOUISIANA AND IS MORE FULLY DESCRIBED AS FOLLOWS:

COMMENCING AT THE SECTION CORNER COMMON TO SECTIONS 21, 22, & 45 TOWNSHIP 6 SOUTH, RANGE 11 EAST, ST. TAMMANY PARISH, LOUISIANA, RUN NORTH 89 DEGREES 30 MINUTES 00 SECONDS EAST FOR A DISTANCE OF 1081.3 FEET TO A POINT; THENCE RUN SOUTH 20 DEGREES 00 MINUTES 00 SECONDS EAST FOR A DISTANCE OF 400.0 FEET TO A POINT; THENCE RUN SOUTH 16 DEGREES 00 MINUTES 00 SECONDS EAST FOR A DISTANCE OF 200.0 FEET TO A POINT; THENCE RUN SOUTH 13 DEGREES 30 MINUTES 00 SECONDS EAST FOR A DISTANCE OF 200.0 FEET; THENCE RUN SOUTH 13 DEGREES 14 MINUTES 30 SECONDS EAST FOR A DISTANCE OF 300.30 FEET; THENCE RUN SOUTH 11 DEGREES 03 MINUTES 30 SECONDS EAST FOR A DISTANCE OF 299.34 FEET; THENCE RUN SOUTH 7 DEGREES 48 MINUTES 40 SECONDS EAST FOR A DISTANCE OF 188.41 FEET; THENCE RUN SOUTH 5 DEGREES 15 MINUTES 40 SECONDS EAST FOR A DISTANCE OF 260.21 FEET; THENCE RUN SOUTH 3 DEGREES 23 MINUTES 20 SECONDS EAST FOR A DISTANCE OF 153.64 FEET; THENCE RUN SOUTH 3 DEGREES 23 MINUTES 20 SECONDS EAST FOR A DISTANCE OF 107.93 FEET; THENCE RUN SOUTH 5 DEGREES 48 MINUTES 40 SECONDS WEST FOR A DISTANCE OF 85.14 FEET; THENCE RUN SOUTH 13 DEGREES 44 MINUTES 30 SECONDS WEST FOR A DISTANCE OF 306.93 FEET; THENCE RUN SOUTH 89 DEGREES 10 MINUTES 00 SECONDS FOR A DISTANCE OF 222.67 FEET TO THE POINT OF BEGINNING.

FROM THE POINT OF BEGINNING, RUN SOUTH 89 DEGREES 10 MINUTES 00 SECONDS WEST FOR A DISTANCE OF 258.88 FEET; THENCE RUN NORTH 01 DEGREES 15 MINUTES 40 SECONDS EAST FOR A DISTANCE OF 40.03 FEET; THENCE RUN NORTH 89 DEGREES 10 MINUTES 00 SECONDS EAST FOR A DISTANCE OF 257.68 FEET; THENCE RUN SOUTH 00 DEGREES 27 MINUTES 20 SECONDS EAST FOR A DISTANCE OF 40.00 FEET BACK TO THE POINT OF BEGINNING.

SAID PARCEL OF LAND CONTAINS 0.24 ACRES OR 10,331.22 SQUARE FEET MORE OR LESS.

THIS IS TO CERTIFY THAT THIS SURVEY WAS DONE UNDER MY DIRECT SUPERVISION AND CONTROL; AND THAT THE SURVEY WAS DONE ON THE GROUND AND IS IN ACCORDANCE WITH THE "MINIMUM STANDARDS FOR PROPERTY BOUNDARY SURVEYS" AS ADOPTED BY THE STATE OF LOUISIANA, BOARD OF REGISTRATION FOR PROFESSIONAL ENGINEERS AND LAND SURVEYORS FOR A CLASS D SURVEY.

SURVEY MAP OF  
A PROPOSED 40' SERVITUDE BEING A PART OF SERVITUDE OF  
DRAIN AND PASSAGE, LOT 3, RIVER GLEN ESTATES, PHASE 2,  
situated in  
SECTION 45, T-6-S, R-11-E  
St. Tammany Parish, Louisiana  
for  
**ST. TAMMANY PARISH GOVERNMENT**

Survey No. 2016 489-3      Drawn by: SPH / JCB      Scale: 1" = 100'  
Date: NOVEMBER 2, 2016      Revised:

This Survey is Certified  
True and Correct By

**JOHN E. BONNEAU & ASSOCIATES, INC.**

Professional Land Surveyors      Planners and Consultants

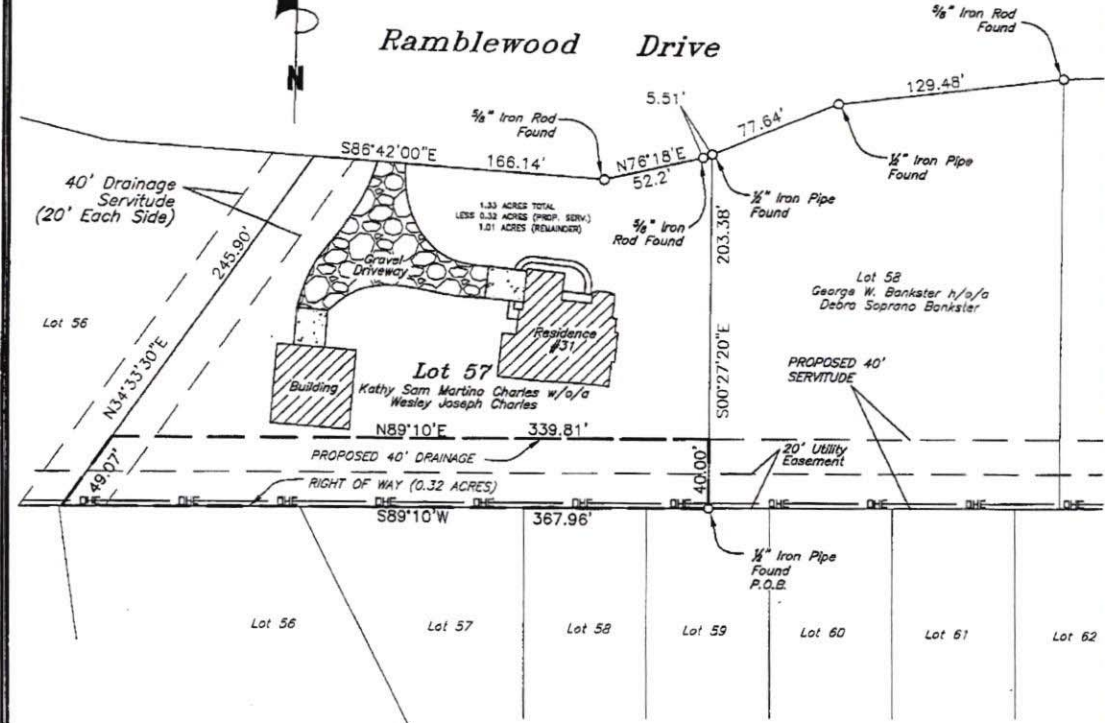
633 NORTH LOTUS DRIVE • MANDEVILLE, LA 70471  
(985)845-1012 • (985)845-1013 • FAX NO. (985)845-1778  
www.JEBCOLandSurveying.com • e-mail: info@jebcosurvey.com

John E. Bonneau  
Professional Land Surveyor  
Registration No. 4423



COPYRIGHT © 2016  
ALL RIGHTS RESERVED  
JOHN E. BONNEAU & ASSOCIATES, INC.

REFERENCE SURVEY:  
The Recorded Subdivision Map.



**LEGAL DESCRIPTION:**

A CERTAIN PIECE OR PORTION OF GROUND SITUATED IN RIVER GLEN ESTATES, PHASE TWO, SECTION 45, T-6-S, R-11-E, ST. TAMMANY PARISH, LOUISIANA AND IS MORE FULLY DESCRIBED AS FOLLOWS:

COMMENCING AT THE SECTION CORNER COMMON TO SECTIONS 21, 22, & 45 TOWNSHIP 6 SOUTH, RANGE 11 EAST, ST. TAMMANY PARISH, LOUISIANA, RUN NORTH 89 DEGREES 30 MINUTES 00 SECONDS EAST FOR A DISTANCE OF 1061.3 FEET TO A POINT; THENCE RUN SOUTH 20 DEGREES 00 MINUTES 00 SECONDS EAST FOR A DISTANCE OF 400.0 FEET TO A POINT; THENCE RUN SOUTH 16 DEGREES 00 MINUTES 00 SECONDS EAST FOR A DISTANCE OF 200.0 FEET TO A POINT; THENCE RUN SOUTH 13 DEGREES 30 MINUTES 00 SECONDS EAST FOR A DISTANCE OF 200.0 FEET; THENCE RUN SOUTH 13 DEGREES 14 MINUTES 30 SECONDS EAST FOR A DISTANCE OF 300.30 FEET; THENCE RUN SOUTH 11 DEGREES 03 MINUTES 30 SECONDS EAST FOR A DISTANCE OF 299.34 FEET; THENCE RUN SOUTH 7 DEGREES 48 MINUTES 40 SECONDS EAST FOR A DISTANCE OF 188.41 FEET; THENCE RUN SOUTH 5 DEGREES 15 MINUTES 40 SECONDS EAST FOR A DISTANCE OF 280.21 FEET; THENCE RUN SOUTH 3 DEGREES 23 MINUTES 20 SECONDS EAST FOR A DISTANCE OF 153.64 FEET; THENCE RUN SOUTH 3 DEGREES 23 MINUTES 20 SECONDS EAST FOR A DISTANCE OF 107.93 FEET; THENCE RUN SOUTH 5 DEGREES 48 MINUTES 40 SECONDS WEST FOR A DISTANCE OF 85.14 FEET; THENCE RUN SOUTH 13 DEGREES 44 MINUTES 30 SECONDS WEST FOR A DISTANCE OF 306.93 FEET; THENCE RUN SOUTH 89 DEGREES 10 MINUTES 00 SECONDS WEST FOR A DISTANCE OF 2056.18 FEET TO THE POINT OF BEGINNING.

FROM THE POINT OF BEGINNING, RUN SOUTH 89 DEGREES 10 MINUTES 00 SECONDS WEST FOR A DISTANCE OF 367.96 FEET; THENCE RUN NORTH 34 DEGREES 33 MINUTES 30 SECONDS WEST FOR A DISTANCE OF 49.07 FEET; THENCE RUN NORTH 89 DEGREES 10 MINUTES 00 SECONDS EAST FOR A DISTANCE OF 339.81 FEET; THENCE RUN SOUTH 00 DEGREES 27 MINUTES 20 SECONDS EAST FOR A DISTANCE OF 40.00 FEET BACK TO THE POINT OF BEGINNING.

SAID PARCEL OF LAND CONTAINS 0.32 ACRES OR 14,155.32 SQUARE FEET MORE OR LESS.

THIS IS TO CERTIFY THAT THIS SURVEY WAS DONE UNDER MY DIRECT SUPERVISION AND CONTROL; AND THAT THE SURVEY WAS DONE ON THE GROUND AND IS IN ACCORDANCE WITH THE "MINIMUM STANDARDS FOR PROPERTY BOUNDARY SURVEYS" AS ADOPTED BY THE STATE OF LOUISIANA, BOARD OF REGISTRATION FOR PROFESSIONAL ENGINEERS AND LAND SURVEYORS FOR A CLASS D SURVEY.

SURVEY MAP OF  
A PROPOSED 40' SERVITUDE BEING A PART OF SERVITUDE OF  
DRAIN AND PASSAGE, LOT 57, RIVER GLEN ESTATES, PHASE 2,  
situated in  
SECTION 45, T-6-S, R-11-E  
St. Tammany Parish, Louisiana  
for  
**ST. TAMMANY PARISH GOVERNMENT**

Survey No. 2016 489-57  
Date: NOVEMBER 2, 2016

Drawn by: SPH / JCB  
Revised:

Scale: 1" = 80'

This Survey is Certified  
True and Correct By

**JOHN E. BONNEAU & ASSOCIATES, INC.**  
Professional Land Surveyors • Planners and Consultants

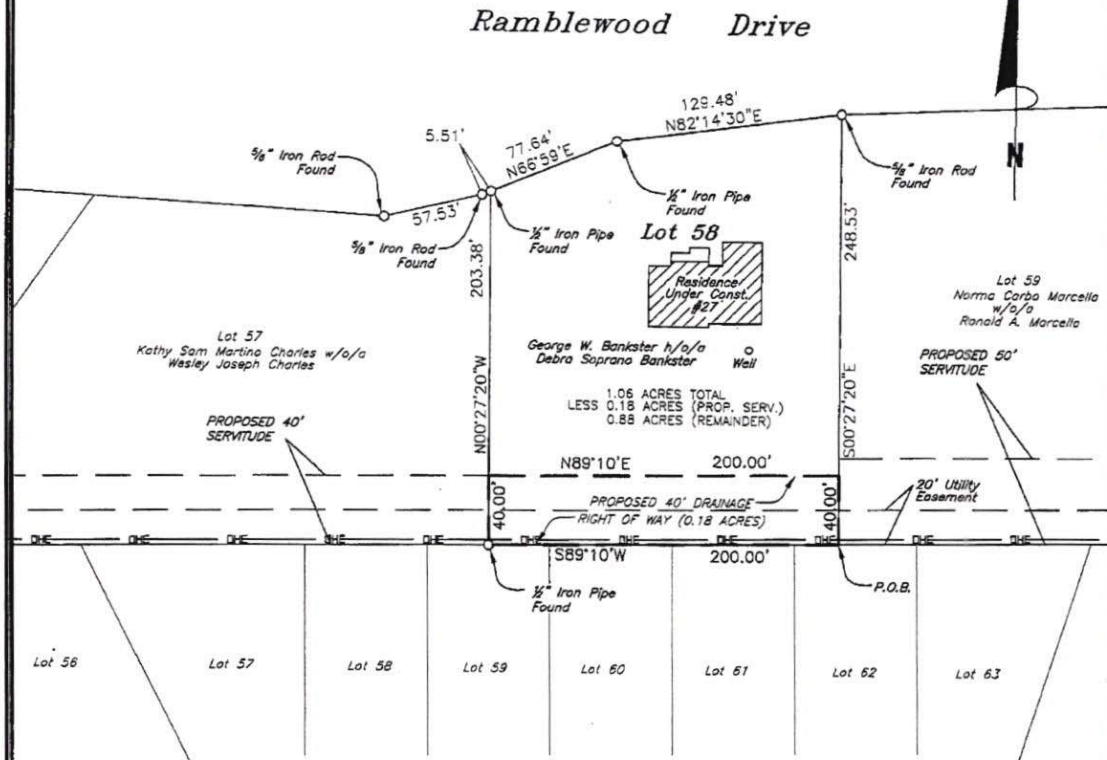
633 NORTH LOTUS DRIVE • MANDEVILLE, LA 70471  
(985)845-1012 • (985)845-1013 • FAX NO. (985)845-1778  
www.JEBCOLandSurveying.com • e-mail: info@jebcosurvey.com

John E. Bonneau  
Professional Land Surveyor  
Registration No. 4423



COPYRIGHT © 2016  
ALL RIGHTS RESERVED  
JOHN E. BONNEAU & ASSOCIATES, INC.

REFERENCE SURVEY:  
The Recorded Subdivision Map.



**LEGAL DESCRIPTION:**

A CERTAIN PIECE OR PORTION OF GROUND SITUATED IN RIVER GLEN ESTATES, PHASE TWO, SECTION 45, T-6-S, R-11-E, ST. TAMMANY PARISH, LOUISIANA AND IS MORE FULLY DESCRIBED AS FOLLOWS:

COMMENCING AT THE SECTION CORNER COMMON TO SECTIONS 21, 22, & 45 TOWNSHIP 6 SOUTH, RANGE 11 EAST, ST. TAMMANY PARISH, LOUISIANA, RUN NORTH 89 DEGREES 30 MINUTES 00 SECONDS EAST FOR A DISTANCE OF 1061.3 FEET TO A POINT; THENCE RUN SOUTH 20 DEGREES 00 MINUTES 00 SECONDS EAST FOR A DISTANCE OF 400.0 FEET TO A POINT; THENCE RUN SOUTH 16 DEGREES 00 MINUTES 00 SECONDS EAST FOR A DISTANCE OF 200.0 FEET TO A POINT; THENCE RUN SOUTH 13 DEGREES 30 MINUTES 00 SECONDS EAST FOR A DISTANCE OF 200.0 FEET; THENCE RUN SOUTH 13 DEGREES 14 MINUTES 30 SECONDS EAST FOR A DISTANCE OF 300.30 FEET; THENCE RUN SOUTH 11 DEGREES 03 MINUTES 30 SECONDS EAST FOR A DISTANCE OF 299.34 FEET; THENCE RUN SOUTH 7 DEGREES 48 MINUTES 40 SECONDS EAST FOR A DISTANCE OF 188.41 FEET; THENCE RUN SOUTH 5 DEGREES 15 MINUTES 40 SECONDS EAST FOR A DISTANCE OF 260.21 FEET; THENCE RUN SOUTH 3 DEGREES 23 MINUTES 20 SECONDS EAST FOR A DISTANCE OF 153.64 FEET; THENCE RUN SOUTH 3 DEGREES 23 MINUTES 20 SECONDS EAST FOR A DISTANCE OF 107.93 FEET; THENCE RUN SOUTH 5 DEGREES 48 MINUTES 40 SECONDS WEST FOR A DISTANCE OF 85.14 FEET; THENCE RUN SOUTH 13 DEGREES 44 MINUTES 30 SECONDS WEST FOR A DISTANCE OF 306.93 FEET; THENCE RUN SOUTH 89 DEGREES 10 MINUTES 00 SECONDS EAST FOR A DISTANCE OF 1856.18 FEET TO THE POINT OF BEGINNING.  
FROM THE POINT OF BEGINNING, RUN SOUTH 89 DEGREES 10 MINUTES 00 SECONDS WEST FOR A DISTANCE OF 200.00 FEET; THENCE RUN NORTH 00 DEGREES 27 MINUTES 20 SECONDS WEST FOR A DISTANCE OF 40.00 FEET; THENCE RUN NORTH 89 DEGREES 10 MINUTES 00 SECONDS EAST FOR A DISTANCE OF 200.00 FEET; THENCE RUN SOUTH 00 DEGREES 27 MINUTES 20 SECONDS EAST FOR A DISTANCE OF 40.00 FEET BACK TO THE POINT OF BEGINNING.

SAID PARCEL OF LAND CONTAINS 0.18 ACRES OR 8000.00 SQUARE FEET MORE OR LESS.

THIS IS TO CERTIFY THAT THIS SURVEY WAS DONE UNDER MY DIRECT SUPERVISION AND CONTROL; AND THAT THE SURVEY WAS DONE ON THE GROUND AND IS IN ACCORDANCE WITH THE "MINIMUM STANDARDS FOR PROPERTY BOUNDARY SURVEYS" AS ADOPTED BY THE STATE OF LOUISIANA, BOARD OF REGISTRATION FOR PROFESSIONAL ENGINEERS AND LAND SURVEYORS FOR A CLASS D SURVEY.

SURVEY MAP OF  
A PROPOSED 40' SERVITUDE BEING A PART OF SERVITUDE OF  
DRAIN AND PASSAGE, LOT 58, RIVER GLEN ESTATES, PHASE 2,  
situated in  
SECTION 45, T-6-S, R-11-E  
St. Tammany Parish, Louisiana  
for  
**ST. TAMMANY PARISH GOVERNMENT**

Survey No. 2016 489-58  
Date: NOVEMBER 2, 2016

Drawn by: SPH / JCB  
Revised:

Scale: 1" = 80'

This Survey is Certified  
True and Correct By

**JOHN E. BONNEAU & ASSOCIATES, INC.**

Professional Land Surveyors • Planners and Consultants

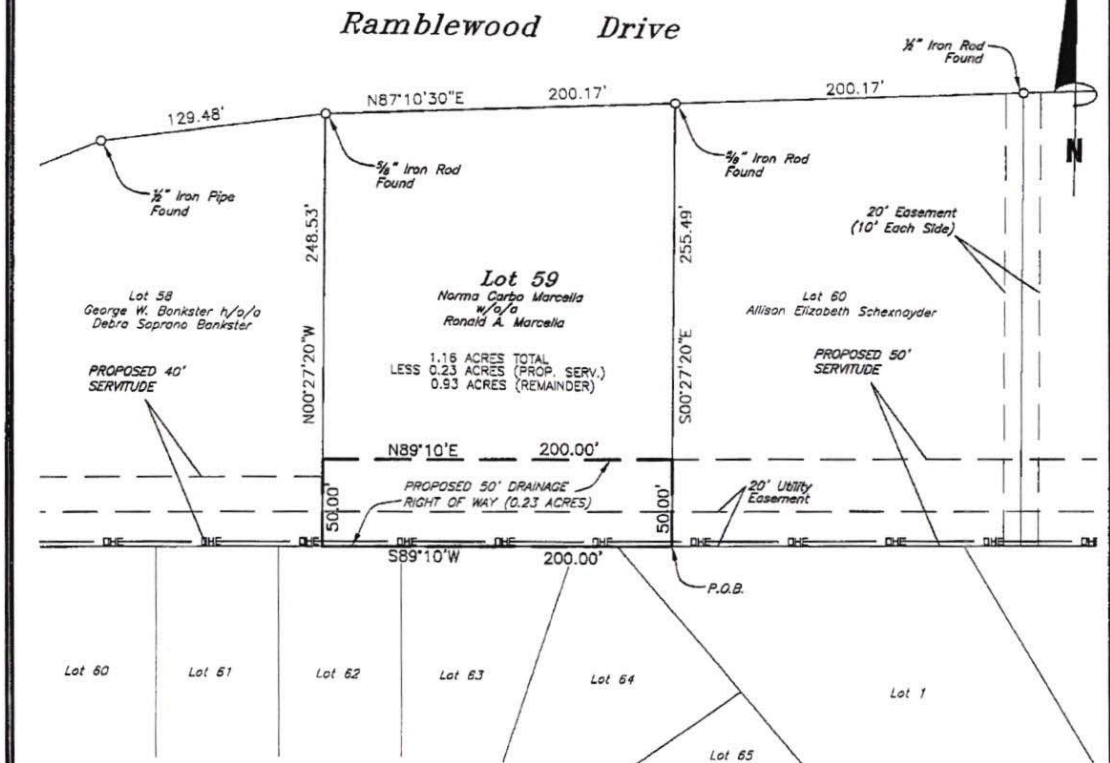
633 NORTH LOTUS DRIVE • MANDEVILLE, LA 70471  
(985)845-1012 • (985)845-1013 • FAX NO. (985)845-1778  
www.JEBCOLandSurveying.com • e-mail: info@jebcosurvey.com

John E. Bonneau  
Professional Land Surveyor  
Registration No. 4423



COPYRIGHT © 2016  
ALL RIGHTS RESERVED  
JOHN E. BONNEAU & ASSOCIATES, INC.

REFERENCE SURVEY:  
The Recorded Subdivision Map.



**LEGAL DESCRIPTION:**

A CERTAIN PIECE OR PORTION OF GROUND SITUATED IN RIVER GLEN ESTATES, PHASE TWO, SECTION 45, T-6-S, R-11-E, ST. TAMMANY PARISH, LOUISIANA AND IS MORE FULLY DESCRIBED AS FOLLOWS:

COMMENCING AT THE SECTION CORNER COMMON TO SECTIONS 21, 22, & 45 TOWNSHIP 6 SOUTH, RANGE 11 EAST, ST. TAMMANY PARISH, LOUISIANA, RUN NORTH 89 DEGREES 30 MINUTES 00 SECONDS EAST FOR A DISTANCE OF 1081.3 FEET TO A POINT; THENCE RUN SOUTH 20 DEGREES 00 MINUTES 00 SECONDS EAST FOR A DISTANCE OF 400.0 FEET TO A POINT; THENCE RUN SOUTH 16 DEGREES 00 MINUTES 00 SECONDS EAST FOR A DISTANCE OF 200.0 FEET TO A POINT; THENCE RUN SOUTH 13 DEGREES 30 MINUTES 00 SECONDS EAST FOR A DISTANCE OF 200.0 FEET; THENCE RUN SOUTH 13 DEGREES 14 MINUTES 30 SECONDS EAST FOR A DISTANCE OF 300.30 FEET; THENCE RUN SOUTH 11 DEGREES 03 MINUTES 30 SECONDS EAST FOR A DISTANCE OF 299.34 FEET; THENCE RUN SOUTH 7 DEGREES 48 MINUTES 40 SECONDS EAST FOR A DISTANCE OF 188.41 FEET; THENCE RUN SOUTH 5 DEGREES 15 MINUTES 40 SECONDS EAST FOR A DISTANCE OF 260.21 FEET; THENCE RUN SOUTH 3 DEGREES 23 MINUTES 20 SECONDS EAST FOR A DISTANCE OF 153.64 FEET; THENCE RUN SOUTH 3 DEGREES 23 MINUTES 20 SECONDS EAST FOR A DISTANCE OF 107.95 FEET; THENCE RUN SOUTH 5 DEGREES 48 MINUTES 40 SECONDS WEST FOR A DISTANCE OF 85.14 FEET; THENCE RUN SOUTH 13 DEGREES 44 MINUTES 30 SECONDS WEST FOR A DISTANCE OF 306.93 FEET; THENCE RUN SOUTH 89 DEGREES 10 MINUTES 00 SECONDS WEST FOR A DISTANCE OF 1656.18 FEET TO THE POINT OF BEGINNING.

FROM THE POINT OF BEGINNING, RUN SOUTH 89 DEGREES 10 MINUTES 00 SECONDS WEST FOR A DISTANCE OF 200.00 FEET; THENCE RUN NORTH 00 DEGREES 27 MINUTES 20 SECONDS WEST FOR A DISTANCE OF 50.00 FEET; THENCE RUN NORTH 89 DEGREES 10 MINUTES 00 SECONDS EAST FOR A DISTANCE OF 200.00 FEET; THENCE RUN SOUTH 00 DEGREES 27 MINUTES 20 SECONDS EAST FOR A DISTANCE OF 50.00 FEET BACK TO THE POINT OF BEGINNING.

SAID PARCEL OF LAND CONTAINS 0.23 ACRES OR 10,000.00 SQUARE FEET MORE OR LESS.

THIS IS TO CERTIFY THAT THIS SURVEY WAS DONE UNDER MY DIRECT SUPERVISION AND CONTROL; AND THAT THE SURVEY WAS DONE ON THE GROUND AND IS IN ACCORDANCE WITH THE "MINIMUM STANDARDS FOR PROPERTY BOUNDARY SURVEYS" AS ADOPTED BY THE STATE OF LOUISIANA, BOARD OF REGISTRATION FOR PROFESSIONAL ENGINEERS AND LAND SURVEYORS FOR A CLASS D SURVEY.

SURVEY MAP OF  
A PROPOSED 50' SERVITUDE BEING A PART OF SERVITUDE OF  
DRAIN AND PASSAGE, LOT 59, RIVER GLEN ESTATES, PHASE 2,  
situated in  
SECTION 45, T-6-S, R-11-E  
St. Tammany Parish, Louisiana  
for  
**ST. TAMMANY PARISH GOVERNMENT**

Survey No. 2016 489-59      Drawn by: SPH / JCB      Scale: 1" = 80'  
Date: NOVEMBER 2, 2016      Revised:

**JOHN E. BONNEAU & ASSOCIATES, INC.**  
Professional Land Surveyors      Planners and Consultants  
633 NORTH LOTUS DRIVE • MANDEVILLE, LA 70471  
(985)845-1012 • (985)845-1013 • FAX NO. (985)845-1778  
www.JEBCOLandSurveying.com • e-mail: info@jebcosurvey.com

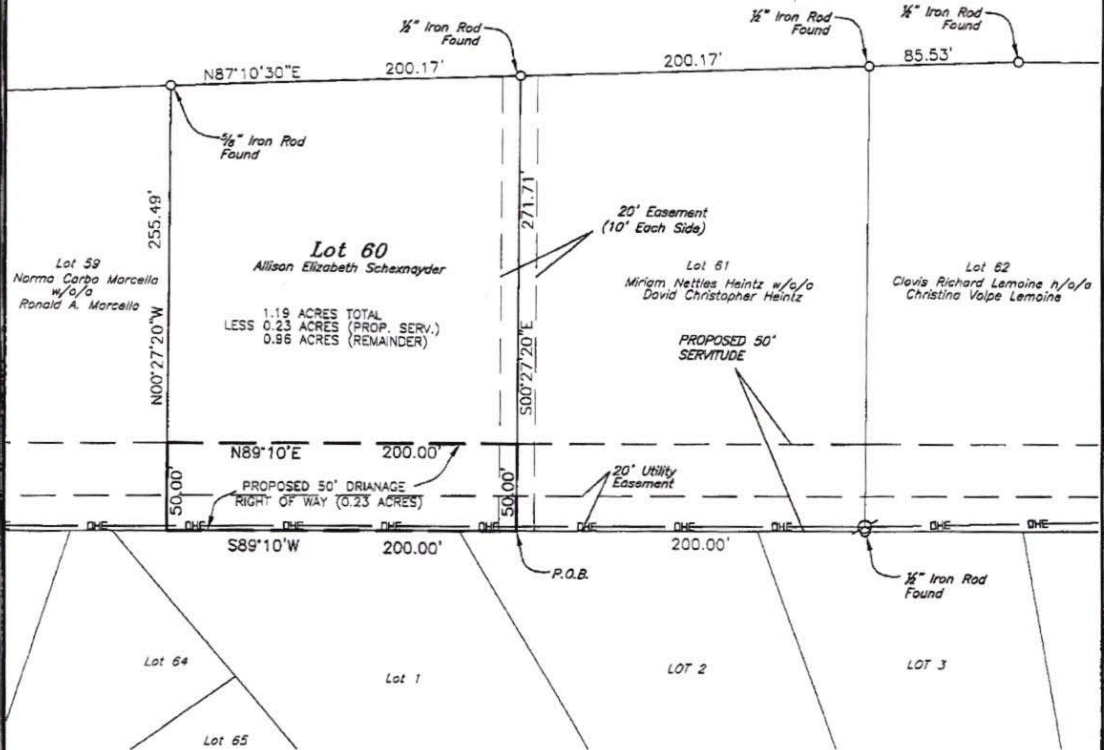
This Survey is Certified  
True and Correct By  
  
John E. Bonneau  
Professional Land Surveyor  
Registration No. 4423



COPYRIGHT © 2016  
ALL RIGHTS RESERVED  
JOHN E. BONNEAU & ASSOCIATES, INC.

## Ramblewood Drive

REFERENCE SURVEY:  
The Recorded Subdivision Map.



**LEGAL DESCRIPTION:**

A CERTAIN PIECE OR PORTION OF GROUND SITUATED IN RIVER GLEN ESTATES, PHASE TWO, SECTION 45, T-6-S, R-11-E, ST. TAMMANY PARISH, LOUISIANA AND IS MORE FULLY DESCRIBED AS FOLLOWS:

COMMENCING AT THE SECTION CORNER COMMON TO SECTIONS 21, 22, & 45 TOWNSHIP 6 SOUTH, RANGE 11 EAST, ST. TAMMANY PARISH, LOUISIANA, RUN NORTH 89 DEGREES 30 MINUTES 00 SECONDS EAST FOR A DISTANCE OF 1061.3 FEET TO A POINT; THENCE RUN SOUTH 20 DEGREES 00 MINUTES 00 SECONDS EAST FOR A DISTANCE OF 400.0 FEET TO A POINT; THENCE RUN SOUTH 16 DEGREES 00 MINUTES 00 SECONDS EAST FOR A DISTANCE OF 200.0 FEET TO A POINT; THENCE RUN SOUTH 13 DEGREES 30 MINUTES 00 SECONDS EAST FOR A DISTANCE OF 200.0 FEET; THENCE RUN SOUTH 13 DEGREES 14 MINUTES 30 SECONDS EAST FOR A DISTANCE OF 300.30 FEET; THENCE RUN SOUTH 11 DEGREES 03 MINUTES 30 SECONDS EAST FOR A DISTANCE OF 299.34 FEET; THENCE RUN SOUTH 7 DEGREES 49 MINUTES 40 SECONDS EAST FOR A DISTANCE OF 188.41 FEET; THENCE RUN SOUTH 5 DEGREES 15 MINUTES 40 SECONDS EAST FOR A DISTANCE OF 260.21 FEET; THENCE RUN SOUTH 3 DEGREES 23 MINUTES 20 SECONDS EAST FOR A DISTANCE OF 153.64 FEET; THENCE RUN SOUTH 3 DEGREES 23 MINUTES 20 SECONDS EAST FOR A DISTANCE OF 107.93 FEET; THENCE RUN SOUTH 5 DEGREES 48 MINUTES 40 SECONDS WEST FOR A DISTANCE OF 85.14 FEET; THENCE RUN SOUTH 13 DEGREES 44 MINUTES 30 SECONDS WEST FOR A DISTANCE OF 306.93 FEET; THENCE RUN SOUTH 89 DEGREES 10 MINUTES 00 SECONDS WEST FOR A DISTANCE OF 1456.18 FEET TO THE POINT OF BEGINNING.

FROM THE POINT OF BEGINNING, RUN SOUTH 89 DEGREES 10 MINUTES 00 SECONDS WEST FOR A DISTANCE OF 200.00 FEET; THENCE RUN NORTH 00 DEGREES 27 MINUTES 20 SECONDS WEST FOR A DISTANCE OF 50.00 FEET; THENCE RUN NORTH 89 DEGREES 10 MINUTES 00 SECONDS EAST FOR A DISTANCE OF 200.00 FEET; THENCE RUN SOUTH 00 DEGREES 27 MINUTES 20 SECONDS EAST FOR A DISTANCE OF 50.00 FEET BACK TO THE POINT OF BEGINNING.

SAID PARCEL OF LAND CONTAINS 0.23 ACRES OR 10,000.00 SQUARE FEET MORE OR LESS.

THIS IS TO CERTIFY THAT THIS SURVEY WAS DONE UNDER MY DIRECT SUPERVISION AND CONTROL; AND THAT THE SURVEY WAS DONE ON THE GROUND AND IS IN ACCORDANCE WITH THE "MINIMUM STANDARDS FOR PROPERTY BOUNDARY SURVEYS" AS ADOPTED BY THE STATE OF LOUISIANA, BOARD OF REGISTRATION FOR PROFESSIONAL ENGINEERS AND LAND SURVEYORS FOR A CLASS D SURVEY.

SURVEY MAP OF  
A PROPOSED 50' SERVITUDE BEING A PART OF SERVITUDE OF  
DRAIN AND PASSAGE, LOT 60, RIVER GLEN ESTATES, PHASE 2,  
situated in  
SECTION 45, T-6-S, R-11-E  
St. Tammany Parish, Louisiana  
for  
**ST. TAMMANY PARISH GOVERNMENT**

Survey No. 2016 489-60  
Date: NOVEMBER 2, 2016

Drawn by: SPH / JCB  
Revised:

Scale: 1" = 80'

This Survey is Certified  
True and Correct By

**JOHN E. BONNEAU & ASSOCIATES, INC.**  
Professional Land Surveyors • Planners and Consultants

633 NORTH LOTUS DRIVE • MANDEVILLE, LA 70471  
(985)845-1012 • (985)845-1013 • FAX NO. (985)845-1778  
www.JEBCOLandSurveying.com • e-mail: info@jebcosurvey.com

John E. Bonneau  
Professional Land Surveyor  
Registration No. 4423

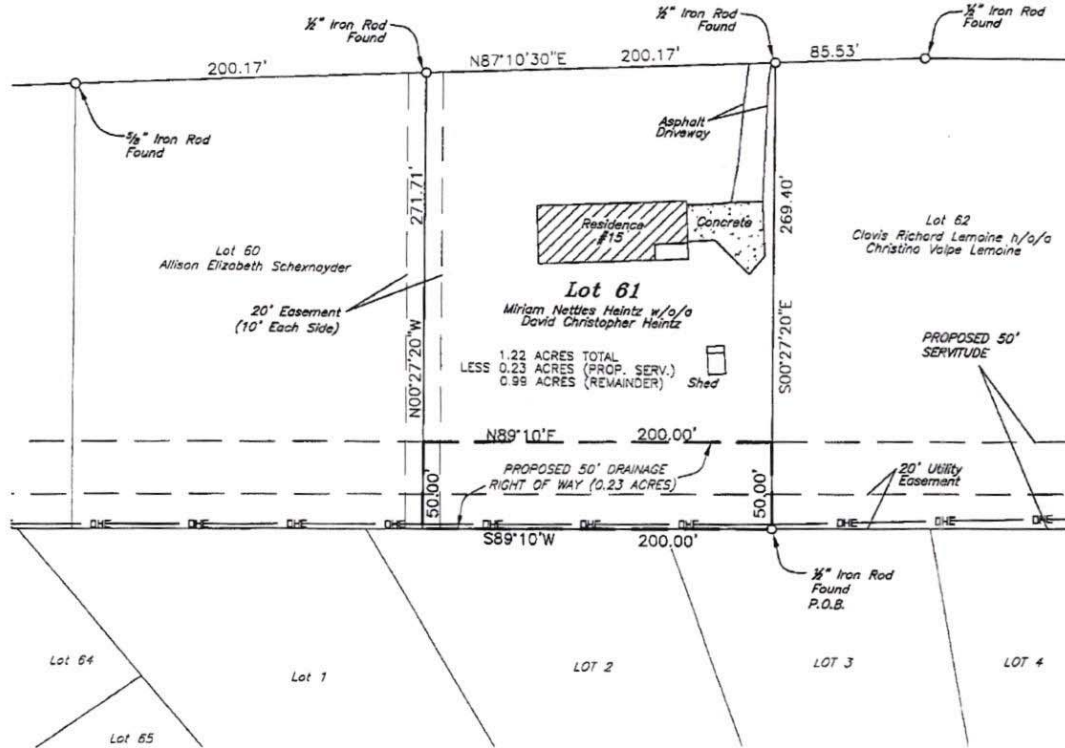




COPYRIGHT © 2016  
ALL RIGHTS RESERVED  
JOHN E. BONNEAU & ASSOCIATES, INC.

### Ramblewood Drive

REFERENCE SURVEY:  
The Recorded Subdivision Map.



**LEGAL DESCRIPTION:**

A CERTAIN PIECE OR PORTION OF GROUND SITUATED IN RIVER GLEN ESTATES, PHASE TWO, SECTION 45, T-6-S, R-11-E, ST. TAMMANY PARISH, LOUISIANA AND IS MORE FULLY DESCRIBED AS FOLLOWS:

COMMENCING AT THE SECTION CORNER COMMON TO SECTIONS 21, 22, & 45 TOWNSHIP 6 SOUTH, RANGE 11 EAST, ST. TAMMANY PARISH, LOUISIANA, RUN NORTH 89 DEGREES 30 MINUTES 00 SECONDS EAST FOR A DISTANCE OF 1061.3 FEET TO A POINT; THENCE RUN SOUTH 20 DEGREES 00 MINUTES 00 SECONDS EAST FOR A DISTANCE OF 400.0 FEET TO A POINT; THENCE RUN SOUTH 16 DEGREES 00 MINUTES 00 SECONDS EAST FOR A DISTANCE OF 200.0 FEET TO A POINT; THENCE RUN SOUTH 13 DEGREES 30 MINUTES 00 SECONDS EAST FOR A DISTANCE OF 200.0 FEET; THENCE RUN SOUTH 13 DEGREES 14 MINUTES 30 SECONDS EAST FOR A DISTANCE OF 300.30 FEET; THENCE RUN SOUTH 11 DEGREES 03 MINUTES 30 SECONDS EAST FOR A DISTANCE OF 289.34 FEET; THENCE RUN SOUTH 7 DEGREES 48 MINUTES 40 SECONDS EAST FOR A DISTANCE OF 188.41 FEET; THENCE RUN SOUTH 5 DEGREES 15 MINUTES 40 SECONDS EAST FOR A DISTANCE OF 280.21 FEET; THENCE RUN SOUTH 3 DEGREES 23 MINUTES 20 SECONDS EAST FOR A DISTANCE OF 153.64 FEET; THENCE RUN SOUTH 3 DEGREES 23 MINUTES 20 SECONDS EAST FOR A DISTANCE OF 107.93 FEET; THENCE RUN SOUTH 5 DEGREES 48 MINUTES 40 SECONDS WEST FOR A DISTANCE OF 85.14 FEET; THENCE RUN SOUTH 13 DEGREES 44 MINUTES 30 SECONDS WEST FOR A DISTANCE OF 306.93 FEET; THENCE RUN SOUTH 88 DEGREES 10 MINUTES 00 SECONDS WEST FOR A DISTANCE OF 1256.18 FEET TO THE POINT OF BEGINNING.  
 FROM THE POINT OF BEGINNING, RUN SOUTH 89 DEGREES 10 MINUTES 00 SECONDS WEST FOR A DISTANCE OF 200.00 FEET; THENCE RUN NORTH 00 DEGREES 27 MINUTES 20 SECONDS WEST FOR A DISTANCE OF 50.00 FEET; THENCE RUN NORTH 89 DEGREES 10 MINUTES 00 SECONDS EAST FOR A DISTANCE OF 200.00 FEET; THENCE RUN SOUTH 00 DEGREES 27 MINUTES 20 SECONDS EAST FOR A DISTANCE OF 50.00 FEET BACK TO THE POINT OF BEGINNING.

SAID PARCEL OF LAND CONTAINS 0.23 ACRES OR 10,000.00 SQUARE FEET MORE OR LESS.

THIS IS TO CERTIFY THAT THIS SURVEY WAS DONE UNDER MY DIRECT SUPERVISION AND CONTROL; AND THAT THE SURVEY WAS DONE ON THE GROUND AND IS IN ACCORDANCE WITH THE "MINIMUM STANDARDS FOR PROPERTY BOUNDARY SURVEYS" AS ADOPTED BY THE STATE OF LOUISIANA, BOARD OF REGISTRATION FOR PROFESSIONAL ENGINEERS AND LAND SURVEYORS FOR A CLASS D SURVEY.

**SURVEY MAP OF  
A PROPOSED 50' SERVITUDE BEING A PART OF SERVITUDE OF  
DRAIN AND PASSAGE, LOT 61, RIVER GLEN ESTATES, PHASE 2,**

situated in  
SECTION 45, T-6-S, R-11-E  
St. Tammany Parish, Louisiana  
for

**ST. TAMMANY PARISH GOVERNMENT**

Survey No. 2016 489-61  
Date: NOVEMBER 2, 2016

Drawn by: SPH / JCB  
Revised:

Scale: 1" = 80'

This Survey is Certified  
True and Correct By

**JOHN E. BONNEAU & ASSOCIATES, INC.**

Professional Land Surveyors • Planners and Consultants

633 NORTH LOTUS DRIVE • MANDEVILLE, LA 70471  
(985)845-1012 • (985)845-1013 • FAX NO. (985)845-1778  
www.JEBCOLandSurveying.com • e-mail: info@jebcosurvey.com

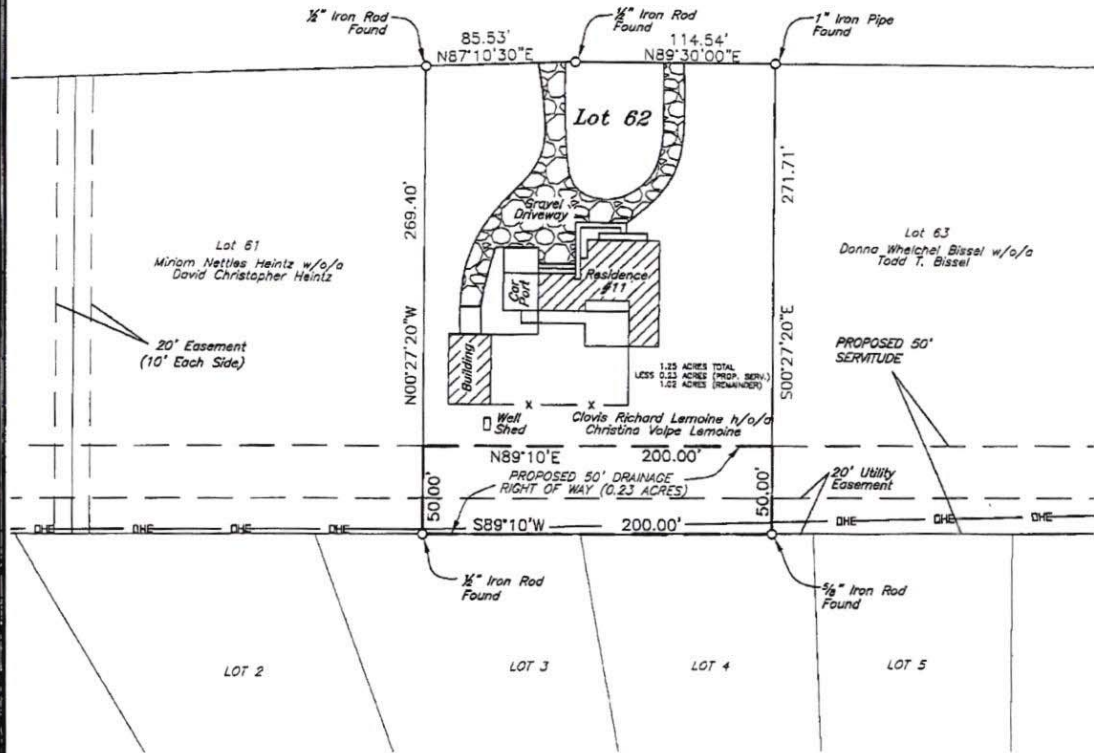
John E. Bonneau  
Professional Land Surveyor  
Registration No. 4423



COPYRIGHT © 2016  
ALL RIGHTS RESERVED  
JOHN E. BONNEAU & ASSOCIATES, INC.

### Ramblewood Drive

REFERENCE SURVEY:  
The Recorded Subdivision Map.



**LEGAL DESCRIPTION:**

A CERTAIN PIECE OR PORTION OF GROUND SITUATED IN RIVER GLEN ESTATES, PHASE TWO, SECTION 45, T-6-S, R-11-E, ST. TAMMANY PARISH, LOUISIANA AND IS MORE FULLY DESCRIBED AS FOLLOWS:

COMMENCING AT THE SECTION CORNER COMMON TO SECTIONS 21, 22, & 45 TOWNSHIP 6 SOUTH, RANGE 11 EAST, ST. TAMMANY PARISH, LOUISIANA, RUN NORTH 89 DEGREES 30 MINUTES 00 SECONDS EAST FOR A DISTANCE OF 1061.3 FEET TO A POINT; THENCE RUN SOUTH 20 DEGREES 00 MINUTES 00 SECONDS EAST FOR A DISTANCE OF 400.0 FEET TO A POINT; THENCE RUN SOUTH 16 DEGREES 00 MINUTES 00 SECONDS EAST FOR A DISTANCE OF 200.0 FEET TO A POINT; THENCE RUN SOUTH 13 DEGREES 30 MINUTES 00 SECONDS EAST FOR A DISTANCE OF 200.0 FEET; THENCE RUN SOUTH 13 DEGREES 14 MINUTES 30 SECONDS EAST FOR A DISTANCE OF 300.30 FEET; THENCE RUN SOUTH 11 DEGREES 03 MINUTES 30 SECONDS EAST FOR A DISTANCE OF 299.34 FEET; THENCE RUN SOUTH 7 DEGREES 48 MINUTES 40 SECONDS EAST FOR A DISTANCE OF 188.41 FEET; THENCE RUN SOUTH 5 DEGREES 15 MINUTES 40 SECONDS EAST FOR A DISTANCE OF 260.21 FEET; THENCE RUN SOUTH 3 DEGREES 23 MINUTES 20 SECONDS EAST FOR A DISTANCE OF 153.64 FEET; THENCE RUN SOUTH 3 DEGREES 23 MINUTES 20 SECONDS EAST FOR A DISTANCE OF 107.93 FEET; THENCE RUN SOUTH 5 DEGREES 48 MINUTES 40 SECONDS WEST FOR A DISTANCE OF 85.14 FEET; THENCE RUN SOUTH 13 DEGREES 44 MINUTES 30 SECONDS WEST FOR A DISTANCE OF 306.93 FEET; THENCE RUN SOUTH 89 DEGREES 10 MINUTES 00 SECONDS WEST FOR A DISTANCE OF 1056.18 FEET TO THE POINT OF BEGINNING.

FROM THE POINT OF BEGINNING, RUN SOUTH 89 DEGREES 10 MINUTES 00 SECONDS WEST FOR A DISTANCE OF 200.00 FEET; THENCE RUN NORTH 00 DEGREES 27 MINUTES 20 SECONDS WEST FOR A DISTANCE OF 50.00 FEET; THENCE RUN NORTH 89 DEGREES 10 MINUTES 00 SECONDS EAST FOR A DISTANCE OF 200.00 FEET; THENCE RUN SOUTH 00 DEGREES 27 MINUTES 20 SECONDS EAST FOR A DISTANCE OF 50.00 FEET BACK TO THE POINT OF BEGINNING.

SAID PARCEL OF LAND CONTAINS 0.23 ACRES OR 10,000.00 SQUARE FEET MORE OR LESS.

THIS IS TO CERTIFY THAT THIS SURVEY WAS DONE UNDER MY DIRECT SUPERVISION AND CONTROL; AND THAT THE SURVEY WAS DONE ON THE GROUND AND IS IN ACCORDANCE WITH THE "MINIMUM STANDARDS FOR PROPERTY BOUNDARY SURVEYS" AS ADOPTED BY THE STATE OF LOUISIANA, BOARD OF REGISTRATION FOR PROFESSIONAL ENGINEERS AND LAND SURVEYORS FOR A CLASS D SURVEY.

**SURVEY MAP OF  
A PROPOSED 50' SERVITUDE BEING A PART OF SERVITUDE OF  
DRAIN AND PASSAGE, LOT 62, RIVER GLEN ESTATES, PHASE 2,**

situated in  
SECTION 45, T-6-S, R-11-E  
St. Tammany Parish, Louisiana

for  
**ST. TAMMANY PARISH GOVERNMENT**

Survey No. 2016 489-62  
Date: NOVEMBER 2, 2016

Drawn by: SPH / JCB  
Revised:

Scale: 1" = 80'

This Survey is Certified  
True and Correct By

**JOHN E. BONNEAU & ASSOCIATES, INC.**  
Professional Land Surveyors • Planners and Consultants

633 NORTH LOTUS DRIVE • MANDEVILLE, LA 70471  
(985)845-1012 • (985)845-1013 • FAX NO. (985)845-1778  
www.JEBCOLandSurveying.com • e-mail: info@jebcosurvey.com

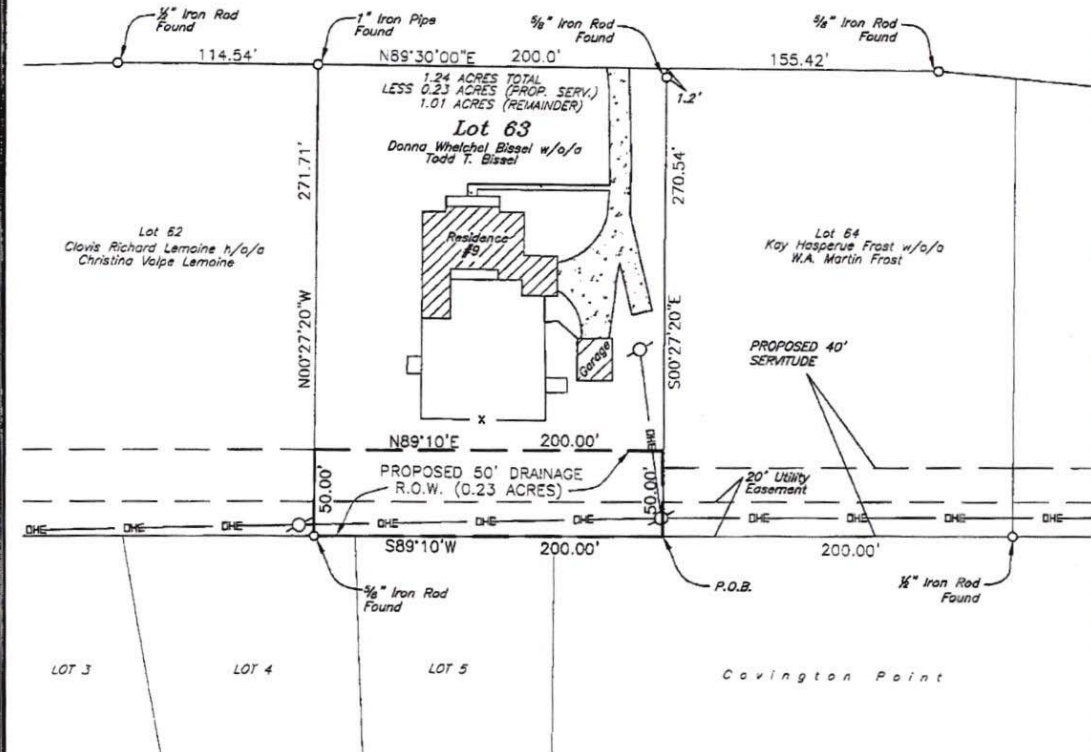
John E. Bonneau  
Professional Land Surveyor  
Registration No. 4423



COPYRIGHT © 2016  
ALL RIGHTS RESERVED  
JOHN E. BONNEAU & ASSOCIATES, INC.

## Ramblewood Drive

REFERENCE SURVEY:  
The Recorded Subdivision Map.



**LEGAL DESCRIPTION:**

A CERTAIN PIECE OR PORTION OF GROUND SITUATED IN RIVER GLEN ESTATES, PHASE TWO, SECTION 45, T-6-S, R-11-E, ST. TAMMANY PARISH, LOUISIANA AND IS MORE FULLY DESCRIBED AS FOLLOWS:

COMMENCING AT THE SECTION CORNER COMMON TO SECTIONS 21, 22, & 45 TOWNSHIP 6 SOUTH, RANGE 11 EAST, ST. TAMMANY PARISH, LOUISIANA, RUN NORTH 89 DEGREES 30 MINUTES 00 SECONDS EAST FOR A DISTANCE OF 1061.3 FEET TO A POINT; THENCE RUN SOUTH 20 DEGREES 00 MINUTES 00 SECONDS EAST FOR A DISTANCE OF 400.0 FEET TO A POINT; THENCE RUN SOUTH 18 DEGREES 00 MINUTES 00 SECONDS EAST FOR A DISTANCE OF 200.0 FEET TO A POINT; THENCE RUN SOUTH 13 DEGREES 30 MINUTES 00 SECONDS EAST FOR A DISTANCE OF 200.0 FEET; THENCE RUN SOUTH 13 DEGREES 14 MINUTES 30 SECONDS EAST FOR A DISTANCE OF 300.30 FEET; THENCE RUN SOUTH 11 DEGREES 03 MINUTES 30 SECONDS EAST FOR A DISTANCE OF 299.34 FEET; THENCE RUN SOUTH 7 DEGREES 48 MINUTES 40 SECONDS EAST FOR A DISTANCE OF 188.41 FEET; THENCE RUN SOUTH 5 DEGREES 15 MINUTES 40 SECONDS EAST FOR A DISTANCE OF 260.21 FEET; THENCE RUN SOUTH 3 DEGREES 23 MINUTES 20 SECONDS EAST FOR A DISTANCE OF 153.64 FEET; THENCE RUN SOUTH 3 DEGREES 23 MINUTES 20 SECONDS EAST FOR A DISTANCE OF 107.93 FEET; THENCE RUN SOUTH 5 DEGREES 48 MINUTES 40 SECONDS WEST FOR A DISTANCE OF 85.14 FEET; THENCE RUN SOUTH 13 DEGREES 44 MINUTES 30 SECONDS WEST FOR A DISTANCE OF 306.93 FEET; THENCE RUN SOUTH 89 DEGREES 10 MINUTES 00 SECONDS WEST FOR A DISTANCE OF 856.18 FEET TO THE POINT OF BEGINNING.

FROM THE POINT OF BEGINNING, RUN SOUTH 89 DEGREES 10 MINUTES 00 SECONDS WEST FOR A DISTANCE OF 200.00 FEET; THENCE RUN NORTH 00 DEGREES 27 MINUTES 20 SECONDS WEST FOR A DISTANCE OF 50.00 FEET; THENCE RUN NORTH 89 DEGREES 10 MINUTES 00 SECONDS EAST FOR A DISTANCE OF 200.00 FEET; THENCE RUN SOUTH 00 DEGREES 27 MINUTES 20 SECONDS EAST FOR A DISTANCE OF 50.00 FEET BACK TO THE POINT OF BEGINNING.

SAID PARCEL OF LAND CONTAINS 0.23 ACRES OR 10,000.00 SQUARE FEET MORE OR LESS.

THIS IS TO CERTIFY THAT THIS SURVEY WAS DONE UNDER MY DIRECT SUPERVISION AND CONTROL; AND THAT THE SURVEY WAS DONE ON THE GROUND AND IS IN ACCORDANCE WITH THE "MINIMUM STANDARDS FOR PROPERTY BOUNDARY SURVEYS" AS ADOPTED BY THE STATE OF LOUISIANA, BOARD OF REGISTRATION FOR PROFESSIONAL ENGINEERS AND LAND SURVEYORS FOR A CLASS D SURVEY.

SURVEY MAP OF  
A PROPOSED 50' SERVITUDE BEING A PART OF SERVITUDE OF  
DRAIN AND PASSAGE, LOT 63, RIVER GLEN ESTATES, PHASE 2,  
situated in  
SECTION 45, T-6-S, R-11-E  
St. Tammany Parish, Louisiana  
for  
**ST. TAMMANY PARISH GOVERNMENT**

Survey No. 2016 489-63  
Date: NOVEMBER 2, 2016

Drawn by: SPH / JCB  
Revised:

Scale: 1" = 80'

This Survey is Certified  
True and Correct By

**JOHN E. BONNEAU & ASSOCIATES, INC.**

Professional Land Surveyors • Planners and Consultants

633 NORTH LOTUS DRIVE • MANDEVILLE, LA 70471  
(985)845-1012 • (985)845-1013 • FAX NO. (985)845-1778  
www.JEBCOLandSurveying.com • e-mail: info@jebcosurvey.com

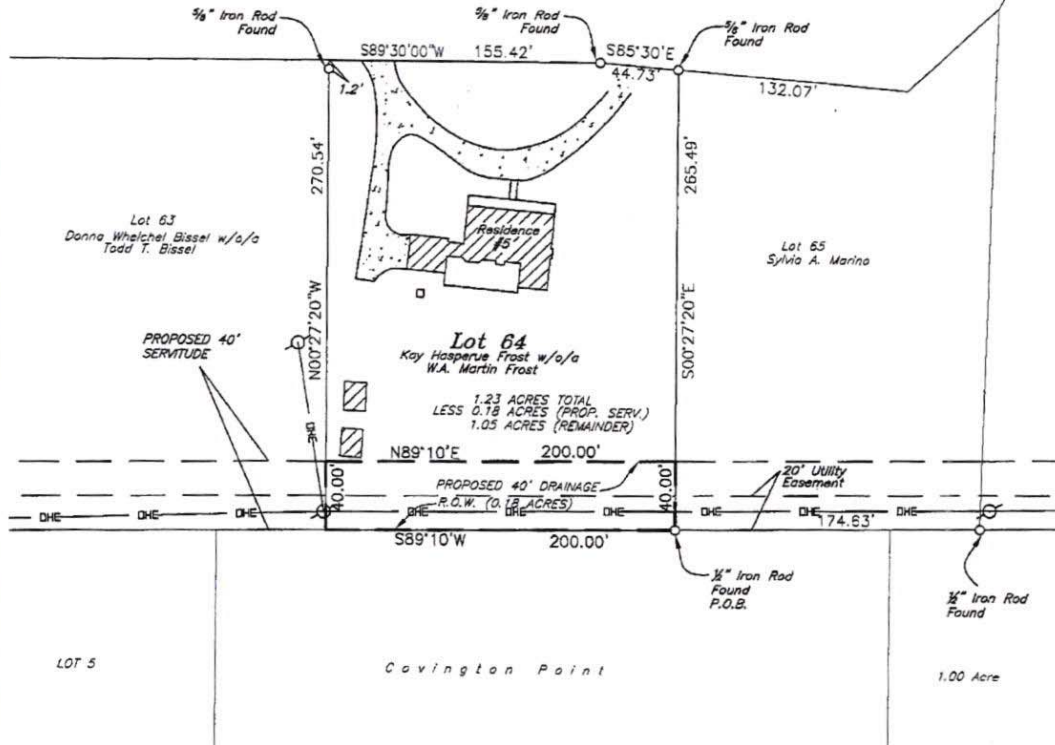
John E. Bonneau  
Professional Land Surveyor  
Registration No. 4423



COPYRIGHT © 2016  
ALL RIGHTS RESERVED  
JOHN E. BONNEAU & ASSOCIATES, INC.

REFERENCE SURVEY:  
The Recorded Subdivision Map.

### Ramblewood Drive



**LEGAL DESCRIPTION:**

A CERTAIN PIECE OR PORTION OF GROUND SITUATED IN RIVER GLEN ESTATES, PHASE TWO, SECTION 45, T-6-S, R-11-E, ST. TAMMANY PARISH, LOUISIANA AND IS MORE FULLY DESCRIBED AS FOLLOWS:

COMMENCING AT THE SECTION CORNER COMMON TO SECTIONS 21, 22, & 45 TOWNSHIP 6 SOUTH, RANGE 11 EAST, ST. TAMMANY PARISH, LOUISIANA, RUN NORTH 89 DEGREES 30 MINUTES 00 SECONDS EAST FOR A DISTANCE OF 1061.3 FEET TO A POINT; THENCE RUN SOUTH 20 DEGREES 00 MINUTES 00 SECONDS EAST FOR A DISTANCE OF 400.0 FEET TO A POINT; THENCE RUN SOUTH 16 DEGREES 00 MINUTES 00 SECONDS EAST FOR A DISTANCE OF 200.0 FEET TO A POINT; THENCE RUN SOUTH 13 DEGREES 30 MINUTES 00 SECONDS EAST FOR A DISTANCE OF 200.0 FEET; THENCE RUN SOUTH 13 DEGREES 14 MINUTES 30 SECONDS EAST FOR A DISTANCE OF 300.30 FEET; THENCE RUN SOUTH 11 DEGREES 03 MINUTES 30 SECONDS EAST FOR A DISTANCE OF 299.34 FEET; THENCE RUN SOUTH 7 DEGREES 48 MINUTES 40 SECONDS EAST FOR A DISTANCE OF 188.41 FEET; THENCE RUN SOUTH 5 DEGREES 15 MINUTES 40 SECONDS EAST FOR A DISTANCE OF 280.21 FEET; THENCE RUN SOUTH 3 DEGREES 23 MINUTES 20 SECONDS EAST FOR A DISTANCE OF 153.64 FEET; THENCE RUN SOUTH 3 DEGREES 23 MINUTES 20 SECONDS EAST FOR A DISTANCE OF 107.93 FEET; THENCE RUN SOUTH 5 DEGREES 48 MINUTES 40 SECONDS WEST FOR A DISTANCE OF 85.14 FEET; THENCE RUN SOUTH 13 DEGREES 44 MINUTES 30 SECONDS WEST FOR A DISTANCE OF 306.93 FEET; THENCE RUN SOUTH 89 DEGREES 10 MINUTES 00 SECONDS WEST FOR A DISTANCE OF 656.18 FEET TO THE POINT OF BEGINNING.

FROM THE POINT OF BEGINNING, RUN SOUTH 89 DEGREES 10 MINUTES 00 SECONDS WEST FOR A DISTANCE OF 200.00 FEET; THENCE RUN NORTH 00 DEGREES 27 MINUTES 20 SECONDS WEST FOR A DISTANCE OF 40.00 FEET; THENCE RUN NORTH 89 DEGREES 10 MINUTES 00 SECONDS EAST FOR A DISTANCE OF 200.00 FEET; THENCE RUN SOUTH 00 DEGREES 27 MINUTES 20 SECONDS EAST FOR A DISTANCE OF 40.00 FEET BACK TO THE POINT OF BEGINNING.

SAID PARCEL OF LAND CONTAINS 0.18 ACRES OR 8000.00 SQUARE FEET MORE OR LESS.

THIS IS TO CERTIFY THAT THIS SURVEY WAS DONE UNDER MY DIRECT SUPERVISION AND CONTROL; AND THAT THE SURVEY WAS DONE ON THE GROUND AND IS IN ACCORDANCE WITH THE "MINIMUM STANDARDS FOR PROPERTY BOUNDARY SURVEYS" AS ADOPTED BY THE STATE OF LOUISIANA, BOARD OF REGISTRATION FOR PROFESSIONAL ENGINEERS AND LAND SURVEYORS FOR A CLASS D SURVEY.

SURVEY MAP OF  
A PROPOSED 40' SERVITUDE BEING A PART OF SERVITUDE OF  
DRAIN AND PASSAGE, LOT 64, RIVER GLEN ESTATES, PHASE 2,  
situated in  
SECTION 45, T-6-S, R-11-E  
St. Tammany Parish, Louisiana  
for  
**ST. TAMMANY PARISH GOVERNMENT**

Survey No. 2016 489-64  
Date: NOVEMBER 2, 2016

Drawn by: SPH / JCB  
Revised:

Scale: 1" = 80'

This Survey is Certified  
True and Correct By

**JOHN E. BONNEAU & ASSOCIATES, INC.**  
Professional Land Surveyors • Planners and Consultants

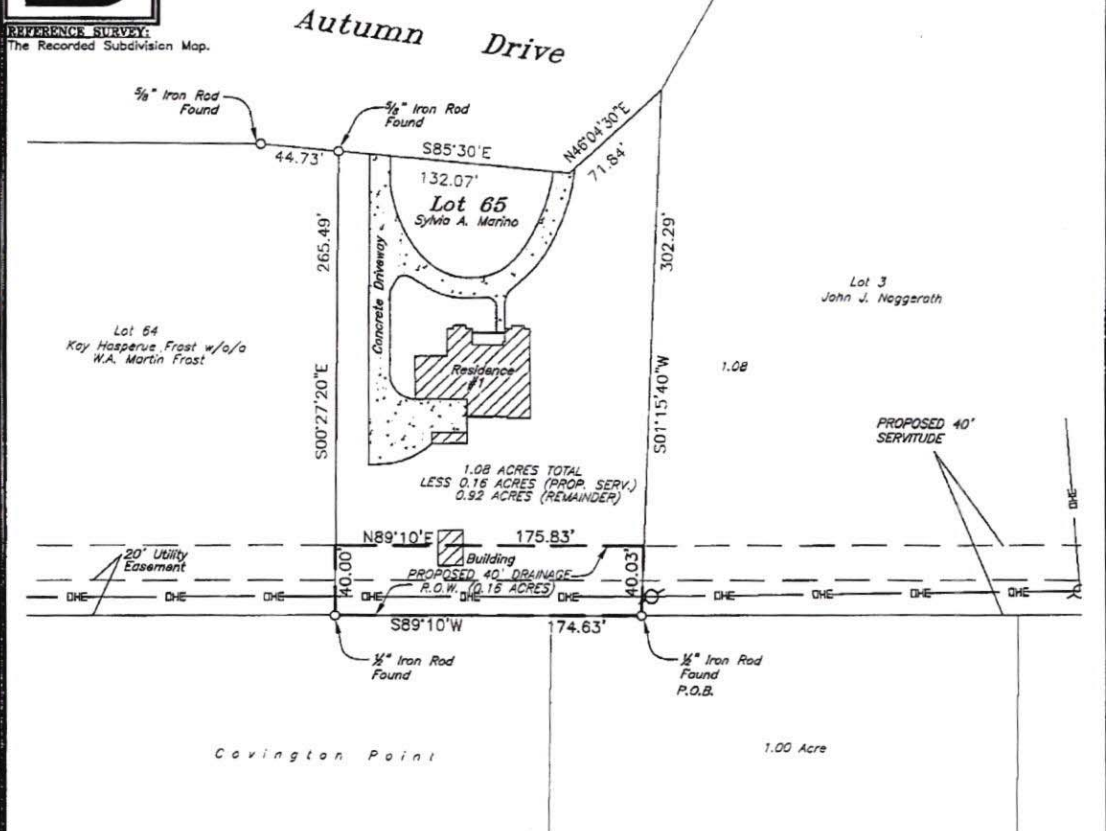
633 NORTH LOTUS DRIVE • MANDEVILLE, LA 70471  
(985)845-1012 • (985)845-1013 • FAX NO. (985)845-1778  
www.JEBCOLandSurveying.com • e-mail: info@jebcosurvey.com

John E. Bonneau  
Professional Land Surveyor  
Registration No. 4423



COPYRIGHT © 2016  
ALL RIGHTS RESERVED  
JOHN E. BONNEAU & ASSOCIATES, INC.

REFERENCE SURVEY:  
The Recorded Subdivision Map.



**LEGAL DESCRIPTION:**

A CERTAIN PIECE OR PORTION OF GROUND SITUATED IN RIVER GLEN ESTATES, PHASE TWO, SECTION 45, T-6-S, R-11-E, ST. TAMMANY PARISH, LOUISIANA AND IS MORE FULLY DESCRIBED AS FOLLOWS:

COMMENCING AT THE SECTION CORNER COMMON TO SECTIONS 21, 22, & 45 TOWNSHIP 6 SOUTH, RANGE 11 EAST, ST. TAMMANY PARISH, LOUISIANA, RUN NORTH 89 DEGREES 30 MINUTES 00 SECONDS EAST FOR A DISTANCE OF 1061.3 FEET TO A POINT; THENCE RUN SOUTH 20 DEGREES 00 MINUTES 00 SECONDS EAST FOR A DISTANCE OF 400.0 FEET TO A POINT; THENCE RUN SOUTH 16 DEGREES 00 MINUTES 00 SECONDS EAST FOR A DISTANCE OF 200.0 FEET TO A POINT; THENCE RUN SOUTH 13 DEGREES 30 MINUTES 00 SECONDS EAST FOR A DISTANCE OF 200.0 FEET; THENCE RUN SOUTH 13 DEGREES 14 MINUTES 30 SECONDS EAST FOR A DISTANCE OF 300.30 FEET; THENCE RUN SOUTH 11 DEGREES 03 MINUTES 30 SECONDS EAST FOR A DISTANCE OF 299.34 FEET; THENCE RUN SOUTH 7 DEGREES 48 MINUTES 40 SECONDS EAST FOR A DISTANCE OF 188.41 FEET; THENCE RUN SOUTH 5 DEGREES 15 MINUTES 40 SECONDS EAST FOR A DISTANCE OF 260.21 FEET; THENCE RUN SOUTH 3 DEGREES 23 MINUTES 20 SECONDS EAST FOR A DISTANCE OF 153.64 FEET; THENCE RUN SOUTH 3 DEGREES 23 MINUTES 20 SECONDS EAST FOR A DISTANCE OF 107.93 FEET; THENCE RUN SOUTH 5 DEGREES 48 MINUTES 40 SECONDS WEST FOR A DISTANCE OF 85.14 FEET; THENCE RUN SOUTH 13 DEGREES 44 MINUTES 30 SECONDS WEST FOR A DISTANCE OF 306.93 FEET; THENCE RUN SOUTH 89 DEGREES 10 MINUTES 00 SECONDS FOR A DISTANCE OF 481.55 FEET; THENCE RUN SOUTH 89 DEGREES 10 MINUTES 00 SECONDS WEST FOR A DISTANCE OF 258.88 FEET TO THE POINT OF BEGINNING.

FROM THE POINT OF BEGINNING, RUN SOUTH 89 DEGREES 10 MINUTES 00 SECONDS WEST FOR A DISTANCE OF 174.63 FEET; THENCE RUN NORTH 00 DEGREES 27 MINUTES 20 SECONDS WEST FOR A DISTANCE OF 40.00 FEET; THENCE RUN NORTH 89 DEGREES 10 MINUTES 00 SECONDS EAST FOR A DISTANCE OF 175.83 FEET; THENCE RUN SOUTH 01 DEGREES 15 MINUTES 40 SECONDS WEST FOR A DISTANCE OF 40.03 FEET BACK TO THE POINT OF BEGINNING.

SAID PARCEL OF LAND CONTAINS 0.16 ACRES OR 7009.18 SQUARE FEET MORE OR LESS.

THIS IS TO CERTIFY THAT THIS SURVEY WAS DONE UNDER MY DIRECT SUPERVISION AND CONTROL; AND THAT THE SURVEY WAS DONE ON THE GROUND AND IS IN ACCORDANCE WITH THE "MINIMUM STANDARDS FOR PROPERTY BOUNDARY SURVEYS" AS ADOPTED BY THE STATE OF LOUISIANA, BOARD OF REGISTRATION FOR PROFESSIONAL ENGINEERS AND LAND SURVEYORS FOR A CLASS D SURVEY.

**SURVEY MAP OF  
A PROPOSED 40' SERVITUDE BEING A PART OF SERVITUDE OF  
DRAIN AND PASSAGE, LOT 65, RIVER GLEN ESTATES, PHASE 2,**

situated in  
SECTION 45, T-6-S, R-11-E  
St. Tammany Parish, Louisiana  
for  
**ST. TAMMANY PARISH GOVERNMENT**

Survey No. 2016 489-65  
Date: NOVEMBER 2, 2016

Drawn by: SPH / JCB  
Revised:

Scale: 1" = 80'

This Survey is Certified  
True and Correct By

**JOHN E. BONNEAU & ASSOCIATES, INC.**  
Professional Land Surveyors • Planners and Consultants

633 NORTH LOTUS DRIVE • MANDEVILLE, LA 70471  
(985)845-1012 • (985)845-1013 • FAX NO. (985)845-1778  
www.JEBCOLandSurveying.com • e-mail: info@jebcosurvey.com

John E. Bonneau  
Professional Land Surveyor  
Registration No. 4423

### **Ordinance Administrative Comment**

ORDINANCE TO AUTHORIZE THE PARISH OF ST. TAMMANY, THROUGH THE OFFICE OF THE PARISH PRESIDENT, TO PURCHASE OR OTHERWISE ACQUIRE CERTAIN PARCELS, RIGHTS OF WAY, AND/OR SERVITUDES FOR THE RIVER GLEN DRAINAGE PROJECT (WARD 3, DISTRICT 2).

St. Tammany Parish seeks to acquire servitudes across multiple parcels for a drainage project. Parish intends to pay no more than appraised value or less, plus costs and fees.