

ST. TAMMANY PARISH COUNCIL

ORDINANCE

ORDINANCE CALENDAR NO: 4825

ORDINANCE COUNCIL SERIES NO: _____

COUNCIL SPONSOR: GOULD/BRISTER

PROVIDED BY: PRESIDENT/LEGAL

INTRODUCED BY: _____

SECONDED BY: _____

ON THE 12 DAY OF JULY , 2012

ORDINANCE TO AUTHORIZE THE PARISH OF ST. TAMMANY, THROUGH THE OFFICE OF THE PARISH PRESIDENT, TO ACQUIRE BY DONATION, CERTAIN WATER LINES, SEWER LINES, A SEWER FORCE MAIN, A LIFT STATION AND ALL RELATED EQUIPMENT LOCATED IN THE PARISH'S RIGHT-OF-WAY ON NORVAL STREET, LOCATED BETWEEN MOLITOR STREET AND DUPREE STREET AND ON MOLITOR STREET, LOCATED BETWEEN NORVAL STREET AND NELSON STREET.

WHEREAS, St. Tammany Parish Government desires to acquire water/sewer infrastructure being installed/constructed by William Johnson, over and upon certain immovable property (hereinafter referred to as "Property"); and

WHEREAS, there is a need and a public purpose for the acquisition of the water and sewer infrastructure located in the right-of-way of Norval Street, located between Molitor Street and Dupre Street and in the right of way of Molitor Street, located between Norval Street and Nelson Street; and

WHEREAS, the Parish of St. Tammany hereby desires to acquire the Property, and authorized the office of the Parish President to do whatever is necessary to acquire equipment/infrastructure.

THE PARISH OF ST. TAMMANY HEREBY ORDAINS: to authorize the Parish of St. Tammany to acquire by donation the water/sewer infrastructure, generally depicted in the water and sewer plans in Exhibit "A" attached hereto; and

BE IT FURTHER ORDAINED that pursuant to all applicable provision of law, the Office of the Parish President is directed and authorized to do whatever is necessary to acquire the equipment/infrastructure.

BE IT FURTHER ORDAINED that the acquisition of equipment/infrastructure shall be by donation.

BE IT FURTHER ORDAINED that the Office of the Parish President is authorized and instructed to proceed with the acquisition of the Equipment/Infrastructure in a timely and orderly matter.

BE IT FURTHER ORDAINED that the Office of the Parish President is authorized to exercise its discretion in acquiring the equipment/infrastructure, together with all agreements and all transactions necessary to carry out the intent of this Ordinance.

BE IT FURTHER ORDAINED that any all actions previously taken by the Office of the Parish President in furtherance of the actions contemplated herein are ratified and accepted accordingly.

REPEAL: All ordinances or parts of Ordinances in conflict herewith are hereby repealed.

SEVERABILITY: If any provision of this Ordinance shall be held to be invalid, such invalidity shall not affect other provisions herein which can be given effect without the invalid provision and to this end the provisions of this Ordinance are hereby declared to be severable.

EFFECTIVE DATE: This Ordinance shall become effective fifteen (15) days after adoption.

MOVED FOR ADOPTION BY: _____ SECONDED BY: _____

WHEREUPON THIS ORDINANCE WAS SUBMITTED TO A VOTE AND RESULTED IN THE FOLLOWING:

YEAS: _____

NAYS: _____

ABSTAIN: _____

ABSENT: _____

THIS ORDINANCE WAS DECLARED DULY ADOPTED AT A REGULAR MEETING OF THE PARISH COUNCIL ON THE 2 DAY OF AUGUST, 2012; AND BECOMES ORDINANCE COUNCIL SERIES NO _____.

MARTIN W. GOULD, JR., COUNCIL CHAIRMAN

ATTEST:

THERESA L. FORD, COUNCIL CLERK

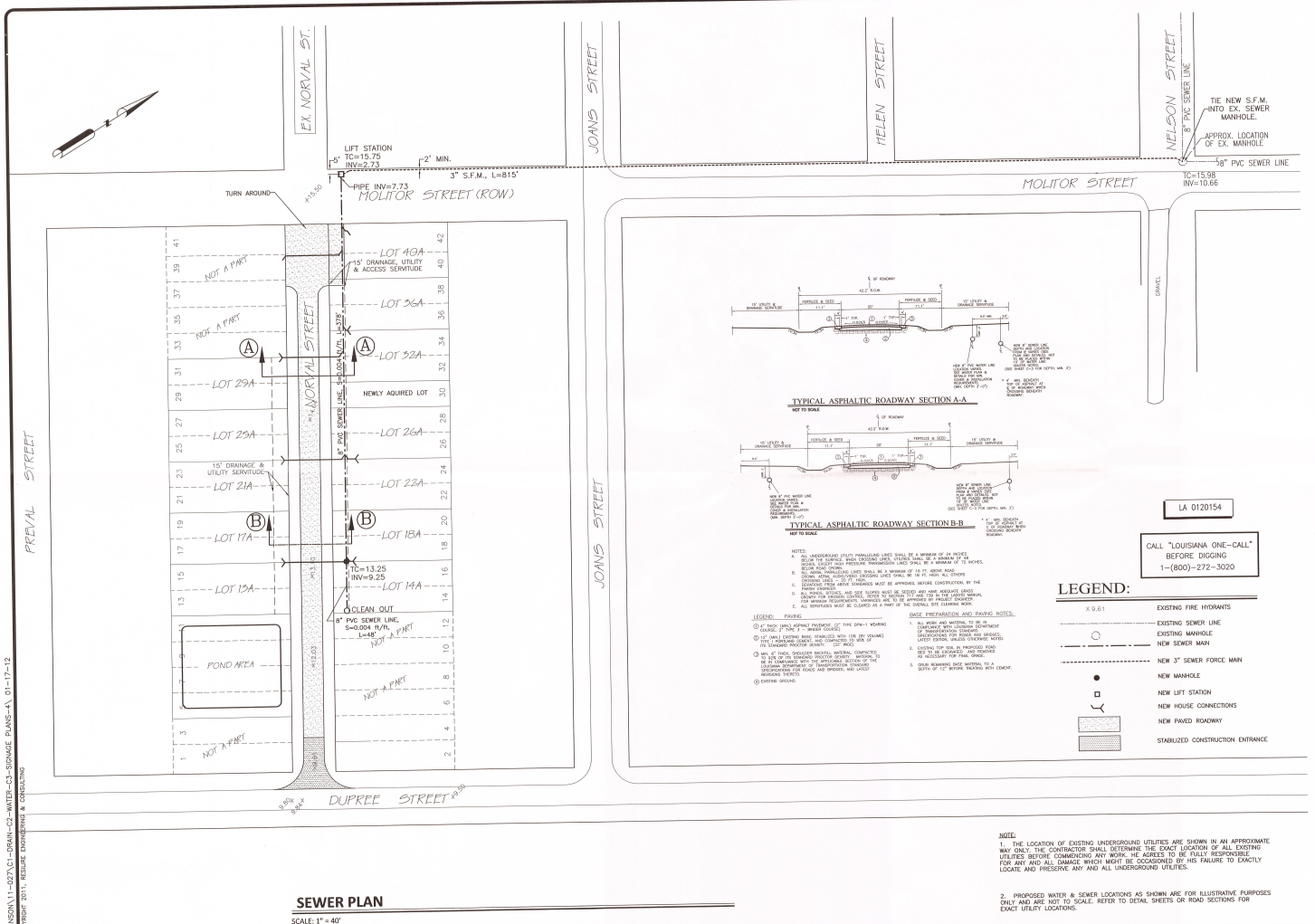
PATRICIA P. BRISTER, PARISH PRESIDENT

Published Introduction: JUNE 28, 2012

Published Adoption: _____, 2012

Delivered to Parish President: _____, 2012 at _____

Returned to Council Clerk: _____, 2012 at _____



C:\JOHNSON\1-027\1-URBAN-02-WATER-03-SIGNAGE PLANS-A-01-17-12
 COPYRIGHT 2011, RESILIRE ENGINEERING & CONSULTING

REVISION	NO.
ADDED ROAD PAVING	1
REVISED: 01/17/12	

RESILIRE
ENGINEERING & CONSULTING
3701 HIGHWAY 59 SUITE A, MANDEVILLE, LOUISIANA
70471 (985)898-0182
RESILIREGROUP.COM

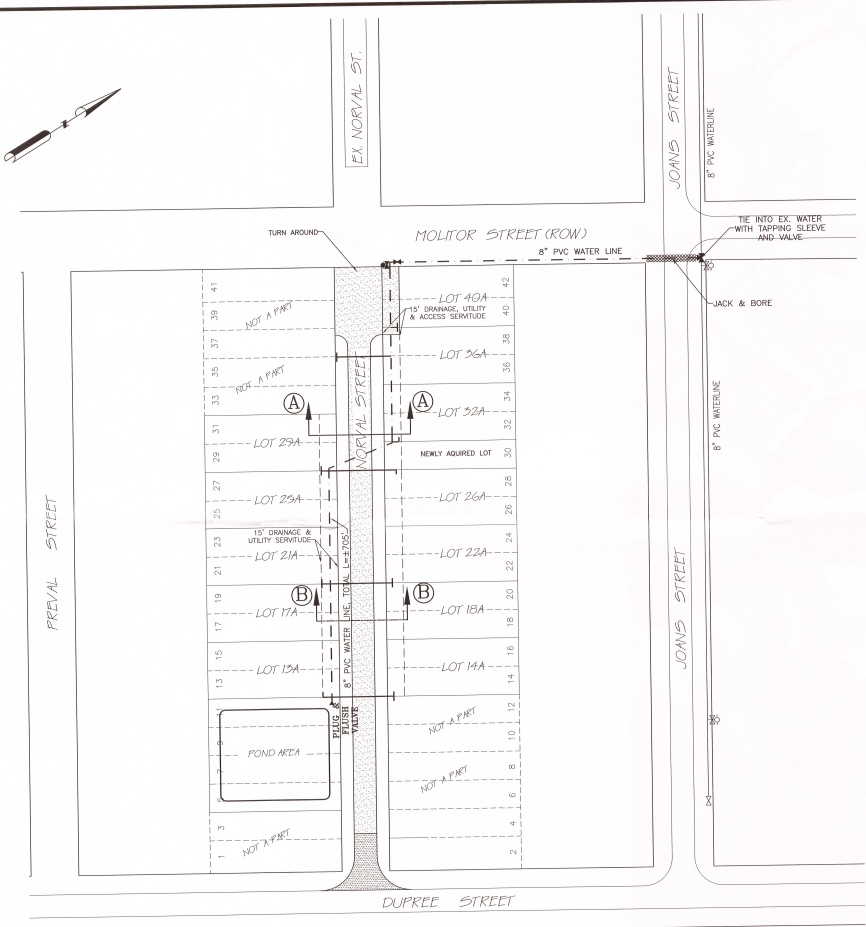


PLANS FOR
NORVAL STREET ENTER THE R.O.W.
 SECTION 44, TOWNSHIP 8 SOUTH, RANGE 12 EAST
 ST. TAMMANY PARISH, LOUISIANA

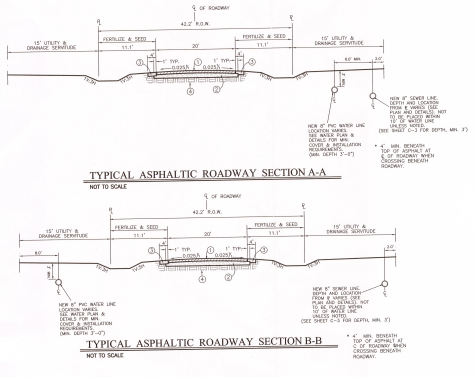
DESIGNED	RSB
CHECKED	RSB
DRAWN	RSB
DATE	11/17/11
SCALE	1"=40'
SHEET	C-3
PROJECT NO.	011-027
SHEET	

C-3

C:\JOHNSON\11-027\CT-DRAIN-C2-WATER-C3-SEWAGE PLANS-A\ 01/17/12
 COPYRIGHT 2011 RESILIRE ENGINEERING & CONSULTING



WATER PLAN
 SCALE: 1" = 40'

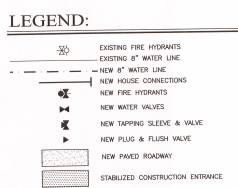


- NOTES:**
- ALL UNDERGROUND UTILITY PARALLELING LINES SHALL BE A MINIMUM OF 24 INCHES BELOW THE SURFACE WHEN CROSSING LINES. UTILITIES SHALL BE A MINIMUM OF 48 INCHES BELOW ANY PRESSURE TRANSPORTATION LINES SHALL BE A MINIMUM OF 72 INCHES BELOW ANY OTHER LINES.
 - ALL OPEN PARALLELING LINES SHALL BE A MINIMUM OF 18 FT. ABOVE ROAD SURFACE FROM ANY PRESSURE TRANSPORTATION LINES SHALL BE 18 FT. FROM ALL OTHER LINES.
 - CONNECTIONS FROM ABOVE STANDARDS MUST BE APPROVED, BEFORE CONSTRUCTION, BY THE TARRANT COUNTY ENGINEER.
 - ALL OPEN UTILITIES SHALL BE COVERED WITH AN APPROVED GRADE. SLOPES FOR EROSION CONTROL, REFER TO SECTION 117 AND 202 IN THE SOUTH MANUAL FOR TARRANT COUNTY STANDARDS AND TO BE APPROVED BY TARRANT COUNTY ENGINEER.
 - ALL UTILITIES MUST BE CLOTTED AS A PART OF THE ORIGINAL THE UTILITY WORK.
- LEGEND - DAWING:**
- 1" TYPICAL SPALL REPAIR TREATMENT OF TYPE SPW-1 WEARING COURSE, 2" TYP. 3" BINDER COURSE
 - 1" TYPICAL EXISTING ROAD, 2" TYPICAL NEW (SEE VOLUMES) TYP. 1" TYPICAL CURBS AND CONCRETE TO SEE OF THE STANDARD PRACTICE ORDER SHEET (SEE SPEC)
 - NEW 8" TYP. SHOULDER BUCKLE WEARING COURSE TO BE SET FOR THE STANDARD PROPOSED SECTION OF THE TARRANT COUNTY DEPARTMENT OF TRANSPORTATION STANDARDS (REFER TO THE ROAD AND BRIDGE, AND STREET DESIGN HANDBOOK)
 - EXISTING GROUND
- BASE CONSTRUCTION AND FINISHING NOTES:**
- ALL WORK AND MATERIAL TO BE IN ACCORDANCE WITH TARRANT COUNTY DEPARTMENT OF TRANSPORTATION STANDARDS (REFER TO THE ROAD AND BRIDGE, AND STREET DESIGN HANDBOOK)
 - SPRING FOR SOIL IS PROPOSED SOIL TO BE DETERMINED AND REPORTED AS NECESSARY FOR FINAL DRAINAGE.
 - SOIL REMOVAL SHALL BE LIMITED TO A DEPTH OF 12" BEFORE REPAIR WITH CEMENT

PWS #103 079
 CALL "LOUISIANA ONE-CALL" BEFORE DIGGING
 1-(800)-272-3020

NOTE:

- THE LOCATION OF EXISTING UNDERGROUND UTILITIES ARE SHOWN IN AN APPROXIMATE WAY ONLY. THE CONTRACTOR SHALL DETERMINE THE EXACT LOCATION OF ALL EXISTING UTILITIES BEFORE COMMENCING ANY WORK. HE AGREES TO BE FULLY RESPONSIBLE FOR ANY AND ALL DAMAGE WHICH MIGHT BE OCCURRED BY HIS FAILURE TO EXACTLY LOCATE AND PRESERVE ANY AND ALL UNDERGROUND UTILITIES.
- PROPOSED WATER & SEWER LOCATIONS AS SHOWN ARE FOR ILLUSTRATIVE PURPOSES ONLY AND ARE NOT TO SCALE. REFER TO DETAIL SHEETS OR ROAD SECTIONS FOR EXACT UTILITY LOCATIONS.



REVISION	NO.
REVISED 12/20/11	1
ADDED JACK & BORE	1
REVISED 01/17/12	2
ADDED FINISH ROAD	2

RESILIRE
 ENGINEERING & CONSULTING
 3701 HIGHWAY 59 SUITE A, MANDEVILLE, LOUISIANA
 70471 (985)898-0182
 RESILIREGROUP.COM



PLANS FOR
NORVAL STREET ENTER THE R.O.W.
 SECTION 44, TOWNSHIP 8 SOUTH, RANGE 12 EAST
 ST. TAMMANY PARISH, LOUISIANA

JOHN	ISS
CHERRY	MC
DATE	11/11/11
SCALE	1"=40'
WATER	PLAN
RESILIRE PROJECT NO.	111-027
SHEET	

C-2

Ordinance Administrative Comment

ORDINANCE TO AUTHORIZE THE PARISH OF ST. TAMMANY, THROUGH THE OFFICE OF THE PARISH PRESIDENT, TO ACQUIRE BY DONATION CERTAIN WATER LINES, SEWER LINES, SEWER FORCE MAIN, LIFT STATION AND RELATED EQUIPMENT LOCATED IN PARISH RIGHT OF WAY ON NORVAL STREET BETWEEN MOLITOR AND DUPREE STREETS AND ON MOLITOR STREET BETWEEN NORVAL AND NELSON STREETS.

This ordinance is for acquisition by donation of the water/sewer infrastructure improvements constructed by developer on Norval Street, all to be more fully described in the Utility Service Agreement to be effected with the developer. Access to Parish's existing water/sewer lines requires developer to extend lines along Molitor Street to connect to Parish's system.