

ST. TAMMANY PARISH COUNCIL

ORDINANCE

ORDINANCE CALENDAR NO: 4833                      ORDINANCE COUNCIL SERIES NO: \_\_\_\_\_  
COUNCIL SPONSOR: GOULD/BRISTER                      PROVIDED BY: PRESIDENT/LEGAL  
INTRODUCED BY: \_\_\_\_\_                      SECONDED BY: \_\_\_\_\_

ON THE 12 DAY OF JULY , 2012

ORDINANCE TO AUTHORIZE THE PARISH OF ST. TAMMANY, THROUGH THE OFFICE OF THE PARISH PRESIDENT, TO ACCEPT THE ACT OF DEDICATION AND DONATION FOR WESTSHORE DRIVE FOR USE AS A PUBLIC STREET, FROM CP NORD DU LAC JV, L.L.C. AND FURTHER FOR THE PARISH TO INCORPORATE THE DEDICATED PROPERTY INTO THE MAINTENANCE SYSTEM.

WHEREAS, St. Tammany Parish Government desires to acquire certain immovable property which is the right-of-way for Westshore Drive (hereinafter referred to as "Property"); and

WHEREAS, there is a need and a public purpose for the acceptance of the Act of Dedication and Donation from CP Nord Du Lac JV, L.L.C. of immovable property within Colonial Pinnacle Nord Du Lac Subdivision for further enhancement and future expansion of the Parish roadways, as shown on the attached survey, Exhibit "A"; and

WHEREAS, the Parish of St. Tammany hereby desires to incorporate Westshore Drive into the St. Tammany Parish Selective Road Maintenance System Inventory and the acceptance is subject to approval of the roadway standards set by the Parish Council and the Department of Engineering and a Warranty Obligation.

THE PARISH OF ST. TAMMANY HEREBY ORDAINS: to authorize the Parish of St. Tammany, to acquire by Act of Dedication and Donation all that certain parcel of ground described in Exhibit "A", attached hereto and referred to as Westshore Drive.

BE IT FURTHER ORDAINED to authorize the incorporation of Westshore Drive into the St. Tammany Parish Selective Road Maintenance System and for the Department of Public Works to provide appropriate maintenance thereto; the acceptance is subject to approval of the roadway standards set by the Parish Council and the Department of Engineering and a Warranty Obligation.

BE IT FURTHER ORDAINED that the Office of the Parish President is authorized to exercise its discretion in acquiring Property, servitudes, and/or rights-of-way, together with signing all documents, agreements and all transactions necessary to carry out the intent of this Ordinance.

BE IT FURTHER ORDAINED that the Office of the Parish President is authorized to exercise its discretion in acquiring the Property, servitudes and/or rights-of-way, together with all agreements and all transactions necessary to carry out the intent of this Ordinance.

REPEAL: All ordinances or parts of Ordinances in conflict herewith are hereby repealed.

SEVERABILITY: If any provision of this Ordinance shall be held to be invalid, such invalidity shall not affect other provisions herein which can be given effect without the invalid provision and to this end the provisions of this Ordinance are hereby declared to be severable.

EFFECTIVE DATE: This Ordinance shall become effective fifteen (15) days after adoption.

MOVED FOR ADOPTION BY: \_\_\_\_\_ SECONDED BY: \_\_\_\_\_

WHEREUPON THIS ORDINANCE WAS SUBMITTED TO A VOTE AND RESULTED IN THE FOLLOWING:

YEAS: \_\_\_\_\_

NAYS: \_\_\_\_\_

ABSTAIN: \_\_\_\_\_

ABSENT: \_\_\_\_\_

THIS ORDINANCE WAS DECLARED DULY ADOPTED AT A REGULAR MEETING OF THE PARISH COUNCIL ON THE 2 DAY OF AUGUST, 2012; AND BECOMES ORDINANCE COUNCIL SERIES NO \_\_\_\_\_.

\_\_\_\_\_  
MARTIN W. GOULD, JR., COUNCIL CHAIRMAN

ATTEST:

\_\_\_\_\_  
THERESA L. FORD, COUNCIL CLERK

\_\_\_\_\_  
PATRICIA P. BRISTER, PARISH PRESIDENT

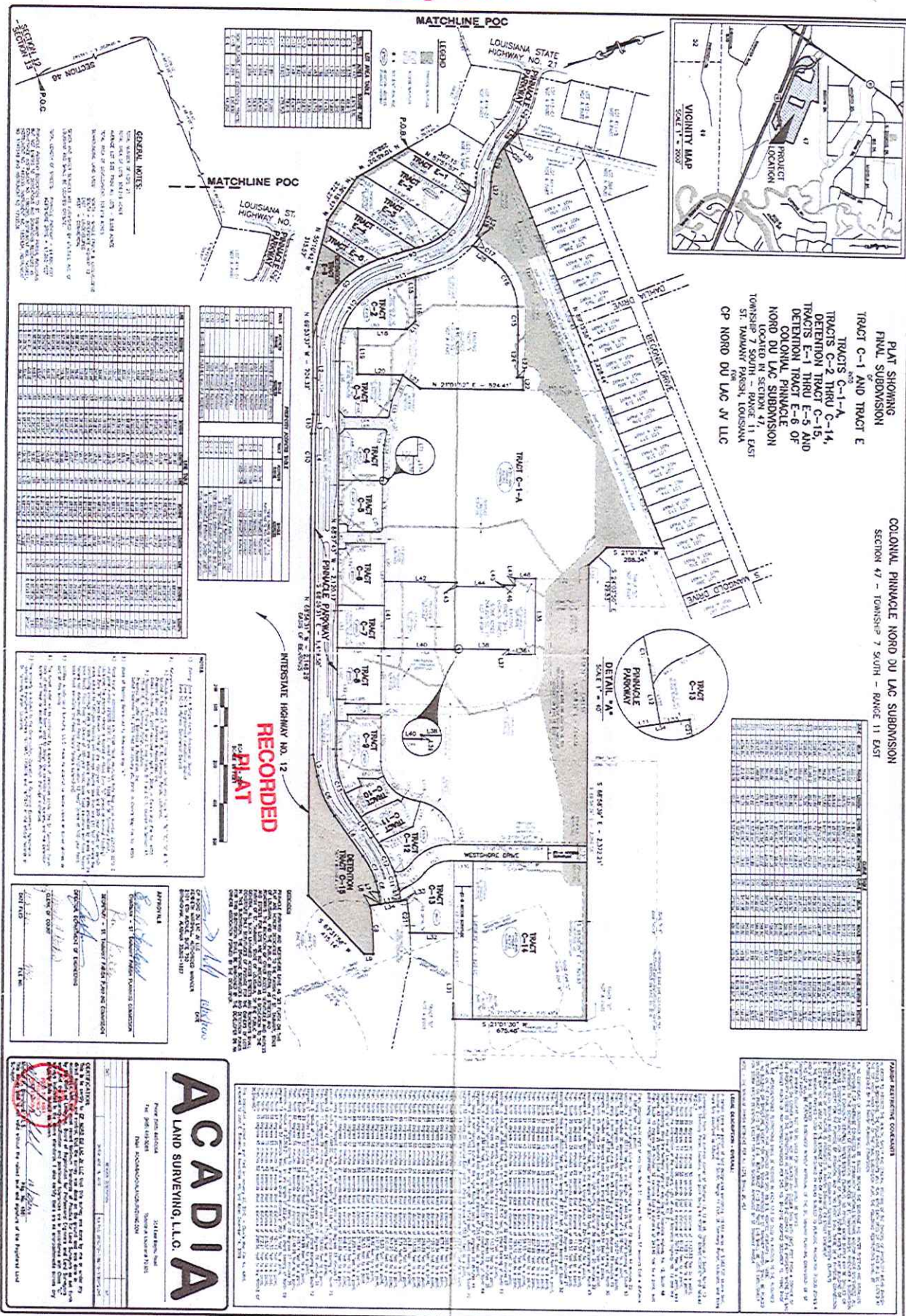
Published Introduction: JUNE 28, 2012

Published Adoption: \_\_\_\_\_, 2012

Delivered to Parish President: \_\_\_\_\_, 2012 at \_\_\_\_\_

Returned to Council Clerk: \_\_\_\_\_, 2012 at \_\_\_\_\_

**EXHIBIT "A"**  
Page 1 of 3





**EXHIBIT "A"**  
**Page 2 of 3**

A certain piece or portion of land designated as "WESTSHORE DRIVE" containing 1.971 acres or 85,860 square feet, located in Section 47, Township 7 South, Range 11 East, St. Tammany Parish, Louisiana, described and delineated according to a survey by Acadian Land Surveying, Inc. dated June 16, 2010, filed for record in the map file records of St. Tammany Parish on November 8, 2010 in Clerk's Map File 4946, and being more fully described as follows:

Commencing from the common corner of Sections 12, 13 & 46, Township 7 South, Range 10 East, St. Tammany Parish, Louisiana, said point being the "POINT OF COMMENCEMENT,"

Then, North 00 degrees 40 minutes 50 seconds East a distance of 1,423.63 feet to a point; Then, North 89 degrees 23 minutes 30 seconds East a distance of 1,109.12 feet to a point; Then, North 89 degrees 14 minutes 55 seconds East a distance of 95.62 feet to a point; Then, North 89 degrees 17 minutes 06 seconds East a distance of 700.84 feet to a point, said point being the intersection of the northerly right of way of Interstate Highway No. 12 and the easterly right of way line of Louisiana State Highway No. 21; Then, proceeding along the Northerly right of way line of Interstate Highway No. 12, South 48 degrees 43 minutes 29 seconds East a distance of 326.61 feet to a point; Then, South 10 degrees 45 minutes 52 seconds East a distance of 542.02 feet to a point; Then, South 36 degrees 18 minutes 47 seconds East a distance of 272.27 feet to a point; Then, South 55 degrees 10 minutes 42 seconds East a distance of 315.57 feet to a point; Then, South 69 degrees 53 minutes 37 seconds East a distance of 704.32 feet to a point; Then, South 64 degrees 20 minutes 14 seconds East a distance of 101.17 feet to a point; Then, proceeding along a curve to the right having a delta of 00 degrees 37 minutes 35 seconds, a radius of 23,068.31 feet, an arc length of 252.24 feet, a chord bearing of South 69 degrees 13 minutes 51 seconds East and a chord distance of 252.24 feet to a point; Then, South 68 degrees 56 minutes 31 seconds East a distance of 2,148.28 feet to a point; Then, North 67 degrees 31 minutes 58 seconds East a distance of 415.14 feet to a point; Then, North 20 degrees 52 minutes 52 seconds East a distance of 44.99 feet to a point; Then, proceeding along a non-tangent curve to the left having a delta of 11 degrees 06 minutes 26 seconds, a radius of 1,310.00 feet, an arc length of 253.96 feet, a chord bearing of North 72 degrees 57 minutes 13 seconds West and a chord distance of 253.56 feet to a point; Then, North 11 degrees 29 minutes 34 seconds East a distance of 157.60 feet to a point; Then, departing the northerly right of way of Interstate Highway No. 12 and continuing along the northerly right of way line of Pinnacle Parkway,

**EXHIBIT "A"**  
**Page 3 of 3**

North 79 degrees 06 minutes 26 seconds West a distance of 41.72 feet to a point, said point being the "POINT OF BEGINNING,"

Then, North 79 degrees 06 minutes 26 seconds West a distance of 21.30 feet to a point, Then, proceeding along a curve to the left having a delta of 07 degrees 09 minutes 24 seconds, a radius of 565.11 feet, an arc length of 70.59 feet, a chord bearing of North 82 degrees 41 minutes 08 seconds West and a chord distance of 70.54 feet to a point; Then, departing said right of way line, proceeding along a non-tangent curve to the left having a delta of 02 degrees 39 minutes 22 seconds, a radius of 566.30 feet, an arc length of 27.04 feet, a chord bearing of North 87 degrees 35 minutes 31 seconds West and a chord distance of 27.04 feet to a point; Then, proceeding along a non-tangent curve to the left having a delta of 58 degrees 52 minutes 22 seconds, a radius of 52.00 feet, an arc length of 53.43 feet, a chord bearing of North 14 degrees 44 minutes 01 seconds East and a chord distance of 51.11 feet to a point; Then, proceeding along a curve to the left having a delta of 18 degrees 31 minutes 07 seconds, a radius of 158.00 feet, an arc length of 51.07 feet, a chord bearing of North 23 degrees 57 minutes 43 seconds West and a chord distance of 50.85 feet to a point; Then, proceeding along a curve to the right having a delta of 54 degrees 14 minutes 38 seconds, a radius of 242.00 feet, an arc length of 229.11 feet, a chord bearing of North 06 degrees 05 minutes 58 seconds West and a chord distance of 220.65 feet to a point; Then, North 21 degrees 01 minutes 21 seconds East a distance of 697.35 feet to a point; Then, South 68 degrees 58 minutes 39 seconds East a distance of 84.00 feet to a point; Then, South 21 degrees 01 minutes 21 seconds West a distance of 697.35 feet to a point; Then, proceeding along a curve to the left having a delta of 54 degrees 14 minutes 38 seconds, a radius of 158.00 feet, an arc length of 149.58 feet, a chord bearing of South 06 degrees 05 minutes 58 seconds East and a chord distance of 144.06 feet to a point; Then, proceeding along a curve to the right having a delta of 28 degrees 35 minutes 09 seconds, a radius of 242.00 feet, an arc length of 120.74 feet, a chord bearing of South 18 degrees 55 minutes 42 seconds East and a chord distance of 119.49 feet to a point; Then, South 04 degrees 38 minutes 08 seconds East a distance of 9.96 feet to a point; Then, proceeding along a curve to the left having a delta of 41 degrees 22 minutes 07 seconds, a radius of 52.00 feet, an arc length of 37.55 feet, a chord bearing of South 25 degrees 19 minutes 12 seconds East and a chord distance of 36.73 feet to the "POINT OF BEGINNING."

Westshore Drive is described and delineated according to a survey by Acadian Land Surveying, Inc. dated June 16, 2010, filed for record in the map file records of St. Tammany Parish on November 8, 2010 in Clerk's Map File 4946.

### **Ordinance Administrative Comment**

ORDINANCE TO AUTHORIZE THE PARISH OF ST. TAMMANY, THROUGH THE OFFICE OF THE PARISH PRESIDENT, TO ACCEPT THE ACT OF DEDICATION AND DONATION FOR WESTSHORE DRIVE FOR USE AS A PUBLIC STREET, FROM CP NORD DU LAC JV, L.L.C. AND FURTHER FOR THE PARISH TO INCORPORATE THE DEDICATED PROPERTY AND IMPROVEMENTS INTO THE MAINTENANCE SYSTEM.

Pursuant to the Development and the approved and recorded Colonial Pinnacle Nord du Lac Subdivision Plat prepared by Acadia Land Surveying, LLC dated November 8, 2010, filed for record in the map file records of St. Tammany Parish on November 8, 2010 in Clerk's Map File 4946, St. Tammany Parish agreed to accept the dedication and donation of Westwood Drive, which is located within Colonial Pinnacle Nord du Lac Subdivision.