

ST. TAMMANY PARISH COUNCIL

ORDINANCE

ORDINANCE CALENDAR NO: 4582

ORDINANCE COUNCIL SERIES NO: _____

COUNCIL SPONSOR: GOULD/DAVIS

PROVIDED BY: PRESIDENT/LEGAL

INTRODUCED BY: BELLISARIO

SECONDED BY: THOMPSON

ON THE 2 DAY OF JUNE, 2011

ORDINANCE TO AUTHORIZE THE PARISH OF ST. TAMMANY, THROUGH THE OFFICE OF THE PARISH PRESIDENT, TO ACQUIRE CERTAIN PARCELS, RIGHTS OF WAY AND/OR SERVITUDES FOR PROJECT ICEBOX INFRASTRUCTURE-84 LUMBER ROAD CONNECTOR.

WHEREAS, the St. Tammany Parish Government desires to acquire certain immovable property (hereinafter referred to as "Property"); and

WHEREAS, there is a need and a public purpose for the acquisition of certain immovable property for road improvements; and

WHEREAS, the Parish of St. Tammany hereby desires to acquire the Property, rights of way and/or servitudes and authorizes the Office of the Parish President to do whatever is necessary to enter into negotiations and acquire said Property, servitudes and/or rights of way.

THE PARISH OF ST. TAMMANY HEREBY ORDAINS: to authorize the Parish of St. Tammany, to acquire by purchase, donation or servitude, all that certain parcel of ground described in Exhibit "A" attached hereto; and

That the Office of the Parish President is authorized and instructed to proceed with the acquisition of the Property, servitudes and/or rights of way in a timely and orderly matter; and

That the Office of the Parish President is authorized to exercise its discretion in acquiring the Property, servitudes and /or rights of way, together with all agreements and all transactions necessary to carry out the intent of this Ordinance; and

That, if purchased, the purchase price shall not exceed the fair market value of the Property as evidenced by an appraisal obtained or supplied to the Parish plus fees and costs; and

That, any and all actions previously taken by the Office of the Parish President in furtherance of the actions contemplated herein are ratified and accepted accordingly.

REPEAL: All ordinances or parts of Ordinances in conflict herewith are hereby repealed.

SEVERABILITY: If any provision of this Ordinance shall be held to be invalid, such invalidity shall not affect other provisions herein which can be given effect without the invalid provision and to this end the provisions of this Ordinance are hereby declared to be severable.

EFFECTIVE DATE: This Ordinance shall become effective fifteen (15) days after adoption.

MOVED FOR ADOPTION BY: _____ SECONDED BY: _____

WHEREUPON THIS ORDINANCE WAS SUBMITTED TO A VOTE AND RESULTED IN THE FOLLOWING:

YEAS: _____

NAYS: _____

ABSTAIN: _____

ABSENT: _____

THIS ORDINANCE WAS DECLARED DULY ADOPTED AT A REGULAR MEETING OF THE PARISH COUNCIL ON THE 7 DAY OF July, 2011; AND BECOMES ORDINANCE COUNCIL SERIES NO _____.

MARTIN W. GOULD, JR., COUNCIL CHAIRMAN

ATTEST:

THERESA L. FORD, COUNCIL CLERK

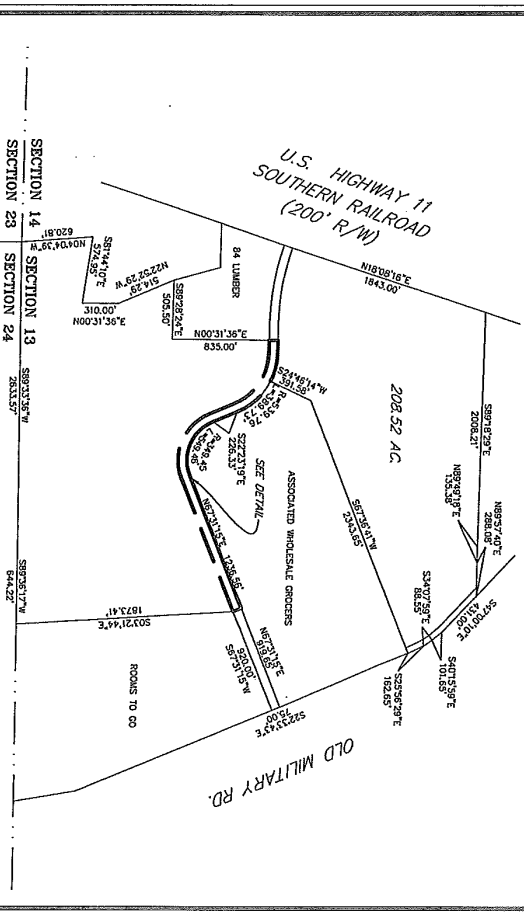
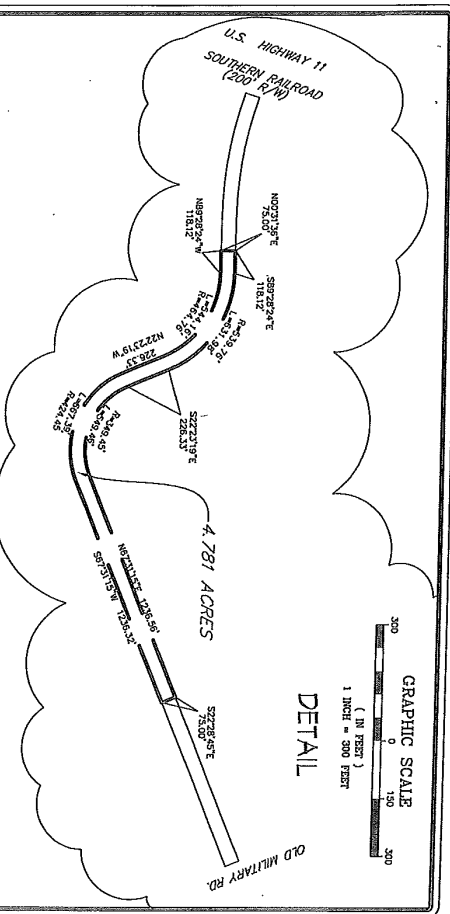
KEVIN DAVIS, PARISH PRESIDENT

Published Introduction: MAY 26, 2011

Published Adoption: _____, 2011

Delivered to Parish President: _____, 2011 at _____

Returned to Council Clerk: _____, 2011 at _____



LEGEND
 ○ 1/2" Iron Rod Set
 ● 1/2" Iron Rod Found
 ⊗ Cross
 ADDRESS: OLD MILITARY ROAD

GRAPHIC SCALE
 1" = 100' (1/4" FEET)
 1" = 500' (1/8" FEET)

BUILDING SETBACKS
 (As per City Ordinance)
 Front Setback.....
 Side Setback.....
 Rear Setback.....

SECTION 14 SECTION 13 SECTION 24
 SECTION 23 SECTION 24

GRAPHIC SCALE
 1" = 100' (1/4" FEET)
 1" = 500' (1/8" FEET)

ENGINEERING
J.V. Burkes & Associates, Inc.
 ENVIRONMENTAL
 2950 Fock Course Blvd., Suite B
 Slidell, Louisiana 70458
 Phone: 985-649-0075 Fax: 985-658-0134
 E-mail: jvoburkes@jvoburkes.com

DRAWN BY: JDL
CHECKED BY: SMB
SCALE: 1" = 500'

DATE: 4/7/10
DRAWING NO.: 20091097ACC

ENGINEERING
J.V. Burkes & Associates, Inc.
 ENVIRONMENTAL
 2950 Fock Course Blvd., Suite B
 Slidell, Louisiana 70458
 Phone: 985-649-0075 Fax: 985-658-0134
 E-mail: jvoburkes@jvoburkes.com

**A SKETCH MAP OF A
 4.781 ACRE PARCEL OF LAND
 SITUATED IN SECTION 13,
 TOWNSHIP 8 SOUTH, RANGE 14 EAST,
 ST. TAMMANY PARISH, LOUISIANA**

**CERTIFIED
 TO: ST. TAMMANY PARISH**

EXHIBIT "A" CONTINUED

J. V. Burkes & Associates, Inc.
1805 Shortcut Hwy., Slidell, La. 70458
phone (985) 649-0075 ♦ fax (985) 649-0154
Engineering ♦ Surveying ♦ Environmental

April 28, 2011
Attachment to J. V. Burkes & Assoc. survey #20091097 (01-04-2010)

for St. Tammany Parish
LEGAL DESCRIPTION – 75 ft. ACCESS & UTILITY EASEMENT
SECTION 13 TOWNSHIP 8 SOUTH – RANGE 14 EAST
SAINT TAMMANY PARISH, LOUISIANA
For: St. Tammany Parish

A certain seventy-five foot wide Access and Utility Easement situated and located in Section 13, Township 8 South, Range 14 East, Saint Tammany Parish, Louisiana and more fully described as follows.

Commencing at a spike find in an asphalt road, the section corner common to Sections 13, 14, 23 and 24, Township 8 South, Range 14 East, St. Tammany Parish, Louisiana run North 04 Degrees 04 Minutes 39 Seconds West a distance of 620.81 feet to a point; Thence run South 81 Degrees 44 Minutes 10 Seconds East a distance of 574.95 feet to a point; Thence run North 00 Degrees 31 Minutes 36 Seconds East a distance of 310.00 feet to a point; Thence run North 22 Degrees 52 Minutes 29 Seconds West a distance of 514.29 feet to a point and the **Point of Beginning**.

From the **Point of Beginning** run North 00 Degrees 31 Minutes 36 Seconds East a distance of 75.00 feet to a point; Thence run South 89 Degrees 28 Minutes 24 Seconds East a distance of 118.12 feet to a point; Thence run along a curve to the right with a radius of 539.76 feet and an arc length of 631.98 feet with a chord bearing and distance of S 55 Degrees 55 Minutes 52 Seconds East – 596.49 feet to a point of tangency; Thence run South 22 Degrees 23 Minutes 19 Seconds East a distance of 226.33 ft. to a point; Thence run along a curve to the left with a radius of 349.45 feet and an arc length of 549.46 feet with a chord bearing and distance of South 67 Degrees 26 Minutes 02 Seconds East – 494.58 feet to a point of tangency; Thence run North 67 Degrees 31 Minutes 15 Seconds East a distance of 1236.56 feet to a point; Thence run South 22 Degrees 28 Minutes 45 Seconds East a distance of 75.00 feet to a ½" iron rod found; Thence go South 67 Degrees 31 Minutes 15 Seconds West a distance of 1236.32 feet to a point; Thence run along a curve to the right with a radius of 424.45 feet and an arc length of 667.39 feet with a chord bearing and distance of North 67 Degrees 26 Minutes 02 Seconds West – 600.73 feet to a point of tangency; Thence run North 22 Degrees 23 Minutes 19 Seconds West a distance of 226.33 feet to a point; Thence run along a curve to the left with a radius of 464.76 feet and an arc length of 544.16 feet with a chord bearing and distance of North 55 Degrees 55 Minutes 52 Seconds West – 513.61 feet to a point of tangency; Thence go North 89 Degrees 28 Minutes 24 Seconds West a distance of 118.12 feet to a point and back to the **Point of Beginning**.

Containing **4.781 acres of land more or less**. A certain seventy-five foot wide Access and Utility Easement situated and located in Town of Pearl River and Section 13, Township 8 South, Range 14 East, Saint Tammany Parish, Louisiana.