

ST. TAMMANY PARISH COUNCIL

ORDINANCE

ORDINANCE CALENDAR NO: 6338                      ORDINANCE COUNCIL SERIES NO: \_\_\_\_\_  
COUNCIL SPONSOR: LORINO/COOPER                      PROVIDED BY: TU/CIVIL DIVISION ADA  
INTRODUCED BY: \_\_\_\_\_                      SECONDED BY: \_\_\_\_\_

ON THE 5 DAY OF MARCH , 2020

ORDINANCE TO AUTHORIZE THE PARISH OF ST. TAMMANY, THROUGH THE OFFICE OF THE PARISH PRESIDENT, TO ENTER INTO A UTILITY SERVICES AGREEMENT FOR WATER AND SEWER SERVICES FOR WINGFIELD SUBDIVISION (WARD 1, DISTRICT 3)

WHEREAS, St. Tammany Parish Government desires to enter into a Utility Services Agreement with the developer of Wingfield Subdivision to provide water and sewer treatment services to the subdivision; and

WHEREAS, the developer will install the water/sewer lines and related equipment needed to connect to Parish’s existing systems, at their expense and as more fully described in the Utility Services Agreement to be effected; and

WHEREAS, upon completion and acceptance of the water and sewer lines and related equipment, the developer shall donate said lined and equipment to Parish, as more fully described in the Utility Services Agreement to be effected.

THE PARISH OF ST. TAMMANY HEREBY ORDAINS: that the Office of the Parish President is authorized to exercise its discretion in entering into a Utility Services Agreement for provision of water and sewer services to Wingfield Subdivision and to take all actions necessary, including entering into all agreements or negotiations in furtherance of the actions contemplated herein;

BE IT FURTHER RESOLVED: that all actions previously taken by the Office of the Parish President in furtherance of the actions or agreements contemplated herein are hereby ratified and approved.

REPEAL: All ordinances or parts of Ordinances in conflict herewith are hereby repealed.

SEVERABILITY: If any provision of this Ordinance shall be held to be invalid, such invalidity shall not affect other provisions herein which can be given effect without the invalid provision and to this end the provisions of this Ordinance are hereby declared to be severable.

EFFECTIVE DATE: This Ordinance shall become effective fifteen (15) days after adoption.

MOVED FOR ADOPTION BY: \_\_\_\_\_ SECONDED BY: \_\_\_\_\_

WHEREUPON THIS ORDINANCE WAS SUBMITTED TO A VOTE AND RESULTED IN THE FOLLOWING:

YEAS: \_\_\_\_\_

NAYS: \_\_\_\_\_

ABSTAIN: \_\_\_\_\_

ABSENT: \_\_\_\_\_

THIS ORDINANCE WAS DECLARED DULY ADOPTED AT A REGULAR MEETING OF THE PARISH COUNCIL ON THE 2 DAY OF APRIL , 2020 ; AND BECOMES ORDINANCE COUNCIL SERIES NO \_\_\_\_\_.

\_\_\_\_\_  
MICHAEL R. LORINO, JR. , COUNCIL CHAIRMAN

ATTEST:

\_\_\_\_\_  
THERESA L. FORD, COUNCIL CLERK

\_\_\_\_\_  
MICHAEL B. COOPER, PARISH PRESIDENT

Published Introduction: FEBRUARY 26 , 2020

Published Adoption: \_\_\_\_\_, 2020

Delivered to Parish President: \_\_\_\_\_, 2020 at \_\_\_\_\_

Returned to Council Clerk: \_\_\_\_\_, 2020 at \_\_\_\_\_

### **Ordinance Administrative Comment**

ORDINANCE TO AUTHORIZE THE PARISH OF ST. TAMMANY, THROUGH THE OFFICE OF THE PARISH PRESIDENT, TO ENTER INTO A UTILITY SERVICES AGREEMENT FOR WATER AND SEWER SERVICES FOR WINGFIELD SUBDIVISION (WARD 1, DISTRICT 3)

St. Tammany Parish seeks to enter into a Utility Services Agreement for provision of water/sewer services to Wingfield Subdivision. Appurtenant to the Utility Services Agreement will include the donation of lines constructed and/or extended and all related equipment necessary to facilitate such services. This will also include all necessary servitudes for future operation and maintenance by Tammany Utilities.



**TAMMANY UTILITIES**  
DEPT. OF ENVIRONMENTAL SERVICES  
ST. TAMMANY PARISH GOVERNMENT

April 10, 2019

Arrow Engineering and Consulting, Inc.  
Attn: Darrell Fussell  
P.O. Box 881  
Madisonville, LA 70447  
(985) 237-3908  
Email: darrfuss123@gmail.com

**RE: Wingfield Subdivision – 47 lots – Joiner Wymer Road– Covington, LA 70433**

To Whom It May Concern:

Tammany Utilities (TU) will be able to service water to the above referenced development through the existing Faubourg Coquille water system (PWS LA1130149).

At this time, TU is in the final planning stages of an expansion of our West St. Tammany Regional WWTP (LA0120235). Once this expansion is complete, we will have the available sewer capacity to service your development.

It is the developer's responsibility to have a reputable engineer design the infrastructure for the development, including details of the connections for both the water distribution and sewer collection systems. These plans must be submitted to Tammany Utilities for review and approval before applying for tentative subdivision approval with St. Tammany Parish. Tammany Utilities also needs to approve the Louisiana Licensed Contractor that will construct the tie in and the infrastructure before any work may begin. At such time that the plans have been accepted by Tammany Utilities, our legal counsel will draft a Utility Services Agreement between Tammany Utilities and you, as the developer.

Using the information provided to TU by the developer and the State Sanitary Code Loading Criteria, the following sewer and water capacities were calculated for this development:

<b>Item</b>	<b>Quantity</b>	<b>Units</b>	<b>GPD</b>	<b>Total (Gallons)</b>
Water/Sewer Services	47	Lots	400	18,800

Estimated fees may include, but are not limited to:

<u>Fees</u>	<u>Quantity</u>	<u>Units</u>	<u>Rate</u>	<u>Total:</u>
Capacity--Water	18,800	Gallons	\$2.35	\$44,180.00
Capacity--Sewer	18,800	Gallons	\$4.70	\$88,360.00
Lift Station	1		\$25,000.00	\$25,000.00
Legal Fees, Permits, etc.	1		\$2,000.00	\$2,000.00

**Grand Total:** **\$159,540.00**

Please be advised that the above-referenced water system and sewer treatment plant each have limited capacity. This letter should not be construed as a reservation of such capacity. Until such time as a written Utility Services Agreement is executed, Tammany Utilities expressly reserves the right to sell said capacity to any third party. Should the remaining capacity of either the water system or sewer treatment plant be purchased by others before a written Utility Services Agreement is executed and the terms and conditions therein have been fulfilled, Tammany Utilities may be unable to provide such service and you may need to find other alternatives for providing central water and sewer services to your development.

**Finally, any and all fees and charges contained herein are estimates.** Any and all such fees are subject to change up and until the execution of a written Utility Services Agreement between the developer and Tammany Utilities.

At your convenience, please forward to Tammany Utilities one (1) full sized copy and one (1) digital copy of the engineered plans, once prepared, for our review, as well as an estimated project timeline. In addition to this, Tammany Utilities requires three (3) full sized copies and one (1) digital copy of the as built plans, upon completion.

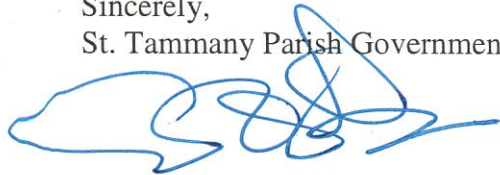
Please send both the full sized plans for review and the as built plans (once completed) to:

Tammany Utilities  
Attn: Amanda Osborn-Kurall  
620 N. Tyler St.  
Covington, LA 70433

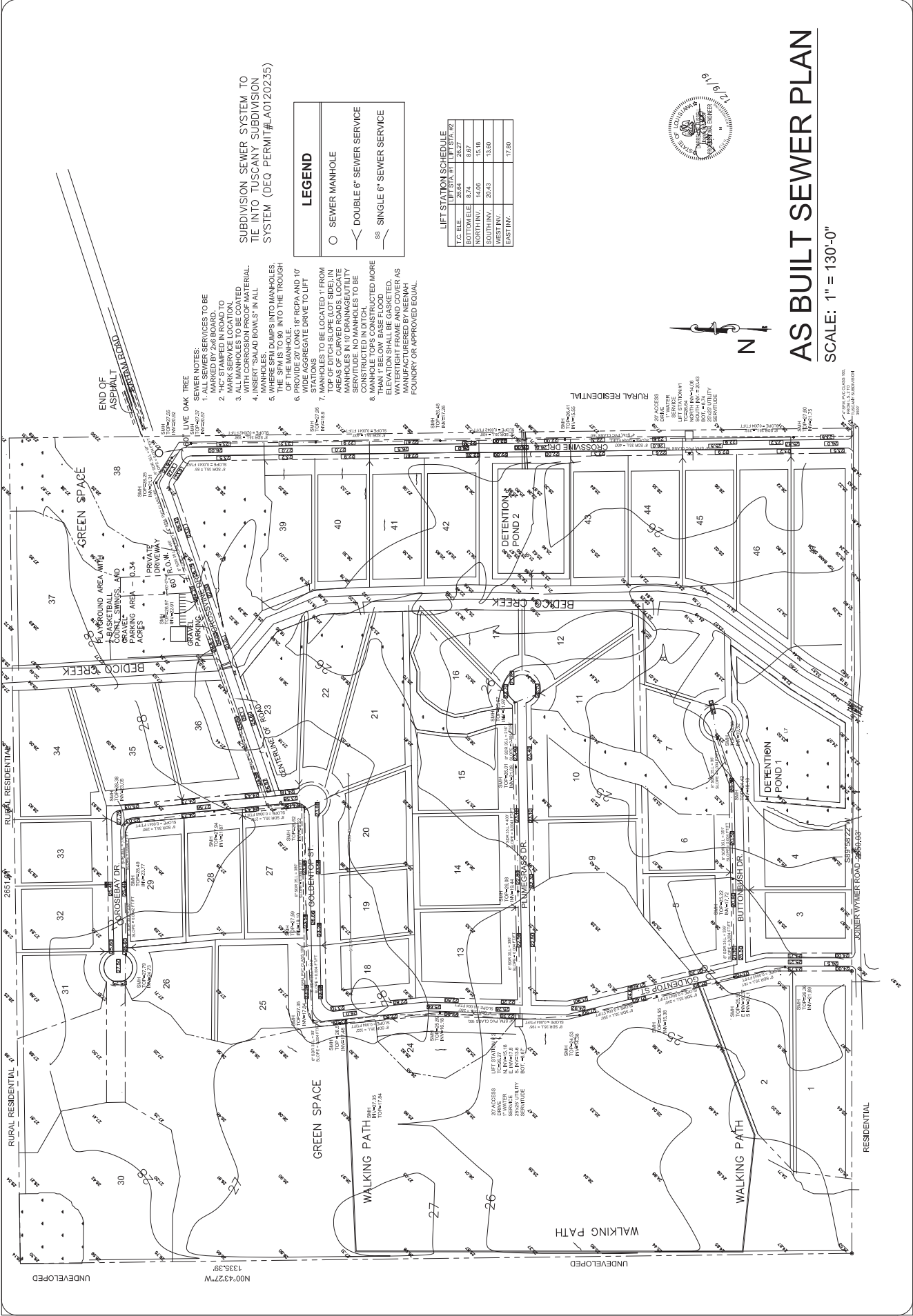
Please send the digital copies of the plans to [amosborn-kurall@stpgov.org](mailto:amosborn-kurall@stpgov.org)

If you have any further questions please call me at 985-893-1717.

Sincerely,  
St. Tammany Parish Government



Amanda Osborn-Kurall  
Tammany Utilities – New Development Coordinator



SUBDIVISION SEWER SYSTEM TO  
TIE INTO TUSCANY SUBDIVISION  
SYSTEM (DEQ PERMIT #A0120235)

LEGEND

○

SEWER MANHOLE

↘

DOUBLE 6" SEWER SERVICE

↘

SINGLE 6" SEWER SERVICE

LIFT STATION SCHEDULE			
	LIFT STA. #1	LIFT STA. #2	
T.C. ELE.	26.64	26.27	
BOTTOM ELE.	8.74	8.67	
NORTH INV.	14.06	15.18	
SOUTH INV.	20.43	13.60	
WEST INV.			
EAST INV.		17.80	





Issue	A	AS ULT	12-9-19
Description	B	Revised	12-9-19

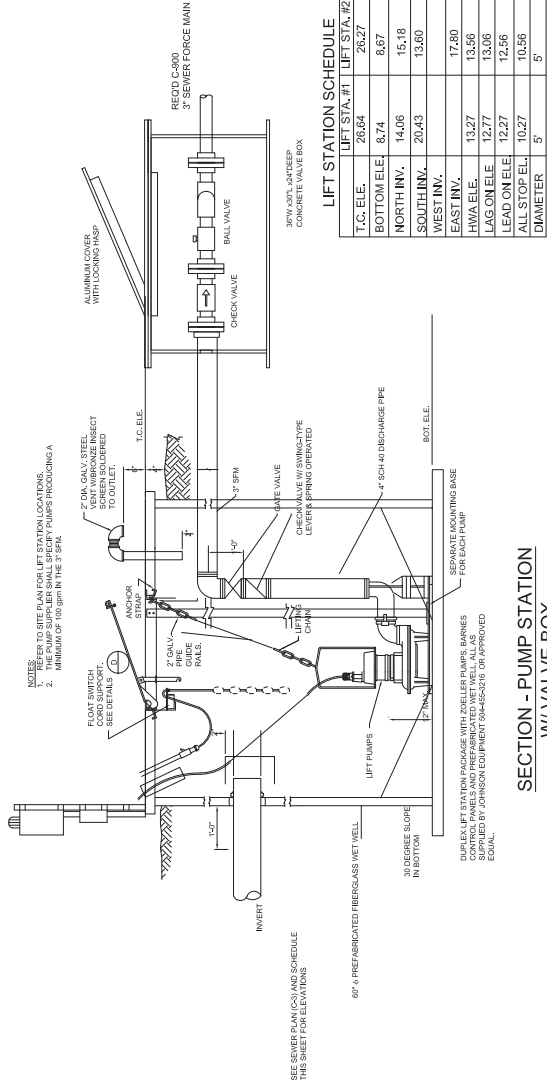
FINAL PLANS  
RECEIVED  
12/10/2019  
DEVELOPMENT  
REVIEW COPY  
ENGINEERING

AS - BUILT  
WINGFIELD SUBDIVISION, PHASE 1  
PLANNED UNIT DEVELOPMENT  
JOINER WYMER ROAD  
ST. TAMMANY PARISH

ARROW ENGINEERING  
& CONSULTING  
DARRELL FUSSELL, P.E.  
Phone: 985-237-3908

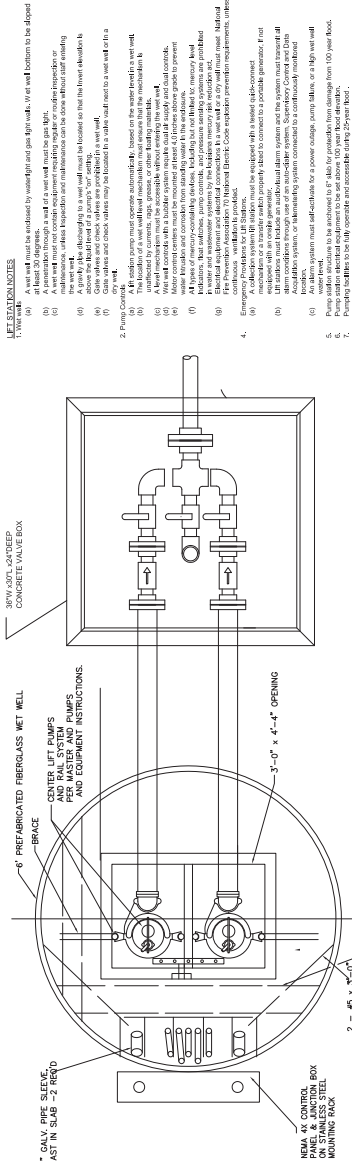
558 Chocoma Drive  
Abitia Springs, LA 70420

C6



LIFT STATION SCHEDULE	
T.C. ELE.	LIFT STA. #1
26.04	26.27
BOTTOM ELE.	8.74
NORTH INV.	14.06
SOUTH INV.	15.18
WEST INV.	20.43
EAST INV.	17.80
HVA ELE.	13.27
LAG ONE ELE.	12.77
LAG TWO ELE.	12.27
ALL STOP ELE.	10.56
DIAMETER	5'

SECTION - PUMP STATION  
W/ VALVE BOX  
NOT TO SCALE



PLAN VIEW - PUMP STATION  
W/ VALVE BOX  
NOT TO SCALE

PUMPS AND CONTROLS TO BE  
INSTALLED BY TAMMANY UTILITIES

AS-BUILT LIFT STATION PLAN VIEW -  
PUMP STATION  
NOT TO SCALE



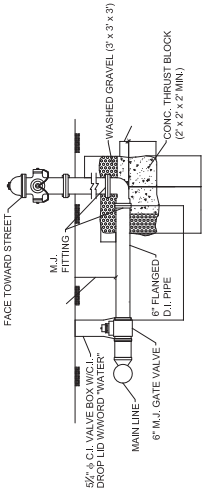
- LIFT STATION NOTES**
1. Wet well
- A wet well must be enclosed by ventilation and gas-free valve, or wet well bottom to be sloped at least 30 degrees.
- (a) A wet well must be enclosed by ventilation and gas-free valve, or wet well bottom to be sloped at least 30 degrees.
- (b) A wet well must not contain equipment requiring regular maintenance or inspection.
- (c) A wet well must not contain equipment requiring regular maintenance or inspection.
- (d) A wet well must not contain equipment requiring regular maintenance or inspection.
- (e) A wet well must not contain equipment requiring regular maintenance or inspection.
- (f) A wet well must not contain equipment requiring regular maintenance or inspection.
- (g) A wet well must not contain equipment requiring regular maintenance or inspection.
- (h) A wet well must not contain equipment requiring regular maintenance or inspection.
- (i) A wet well must not contain equipment requiring regular maintenance or inspection.
- (j) A wet well must not contain equipment requiring regular maintenance or inspection.
- (k) A wet well must not contain equipment requiring regular maintenance or inspection.
- (l) A wet well must not contain equipment requiring regular maintenance or inspection.
- (m) A wet well must not contain equipment requiring regular maintenance or inspection.
- (n) A wet well must not contain equipment requiring regular maintenance or inspection.
- (o) A wet well must not contain equipment requiring regular maintenance or inspection.
- (p) A wet well must not contain equipment requiring regular maintenance or inspection.
- (q) A wet well must not contain equipment requiring regular maintenance or inspection.
- (r) A wet well must not contain equipment requiring regular maintenance or inspection.
- (s) A wet well must not contain equipment requiring regular maintenance or inspection.
- (t) A wet well must not contain equipment requiring regular maintenance or inspection.
- (u) A wet well must not contain equipment requiring regular maintenance or inspection.
- (v) A wet well must not contain equipment requiring regular maintenance or inspection.
- (w) A wet well must not contain equipment requiring regular maintenance or inspection.
- (x) A wet well must not contain equipment requiring regular maintenance or inspection.
- (y) A wet well must not contain equipment requiring regular maintenance or inspection.
- (z) A wet well must not contain equipment requiring regular maintenance or inspection.
2. Pump Controls
- (a) A wet well must not contain equipment requiring regular maintenance or inspection.
- (b) A wet well must not contain equipment requiring regular maintenance or inspection.
- (c) A wet well must not contain equipment requiring regular maintenance or inspection.
- (d) A wet well must not contain equipment requiring regular maintenance or inspection.
- (e) A wet well must not contain equipment requiring regular maintenance or inspection.
- (f) A wet well must not contain equipment requiring regular maintenance or inspection.
- (g) A wet well must not contain equipment requiring regular maintenance or inspection.
- (h) A wet well must not contain equipment requiring regular maintenance or inspection.
- (i) A wet well must not contain equipment requiring regular maintenance or inspection.
- (j) A wet well must not contain equipment requiring regular maintenance or inspection.
- (k) A wet well must not contain equipment requiring regular maintenance or inspection.
- (l) A wet well must not contain equipment requiring regular maintenance or inspection.
- (m) A wet well must not contain equipment requiring regular maintenance or inspection.
- (n) A wet well must not contain equipment requiring regular maintenance or inspection.
- (o) A wet well must not contain equipment requiring regular maintenance or inspection.
- (p) A wet well must not contain equipment requiring regular maintenance or inspection.
- (q) A wet well must not contain equipment requiring regular maintenance or inspection.
- (r) A wet well must not contain equipment requiring regular maintenance or inspection.
- (s) A wet well must not contain equipment requiring regular maintenance or inspection.
- (t) A wet well must not contain equipment requiring regular maintenance or inspection.
- (u) A wet well must not contain equipment requiring regular maintenance or inspection.
- (v) A wet well must not contain equipment requiring regular maintenance or inspection.
- (w) A wet well must not contain equipment requiring regular maintenance or inspection.
- (x) A wet well must not contain equipment requiring regular maintenance or inspection.
- (y) A wet well must not contain equipment requiring regular maintenance or inspection.
- (z) A wet well must not contain equipment requiring regular maintenance or inspection.
3. Emergency Procedures for Lift Station
- (a) A wet well must not contain equipment requiring regular maintenance or inspection.
- (b) A wet well must not contain equipment requiring regular maintenance or inspection.
- (c) A wet well must not contain equipment requiring regular maintenance or inspection.
- (d) A wet well must not contain equipment requiring regular maintenance or inspection.
- (e) A wet well must not contain equipment requiring regular maintenance or inspection.
- (f) A wet well must not contain equipment requiring regular maintenance or inspection.
- (g) A wet well must not contain equipment requiring regular maintenance or inspection.
- (h) A wet well must not contain equipment requiring regular maintenance or inspection.
- (i) A wet well must not contain equipment requiring regular maintenance or inspection.
- (j) A wet well must not contain equipment requiring regular maintenance or inspection.
- (k) A wet well must not contain equipment requiring regular maintenance or inspection.
- (l) A wet well must not contain equipment requiring regular maintenance or inspection.
- (m) A wet well must not contain equipment requiring regular maintenance or inspection.
- (n) A wet well must not contain equipment requiring regular maintenance or inspection.
- (o) A wet well must not contain equipment requiring regular maintenance or inspection.
- (p) A wet well must not contain equipment requiring regular maintenance or inspection.
- (q) A wet well must not contain equipment requiring regular maintenance or inspection.
- (r) A wet well must not contain equipment requiring regular maintenance or inspection.
- (s) A wet well must not contain equipment requiring regular maintenance or inspection.
- (t) A wet well must not contain equipment requiring regular maintenance or inspection.
- (u) A wet well must not contain equipment requiring regular maintenance or inspection.
- (v) A wet well must not contain equipment requiring regular maintenance or inspection.
- (w) A wet well must not contain equipment requiring regular maintenance or inspection.
- (x) A wet well must not contain equipment requiring regular maintenance or inspection.
- (y) A wet well must not contain equipment requiring regular maintenance or inspection.
- (z) A wet well must not contain equipment requiring regular maintenance or inspection.





NOTES:

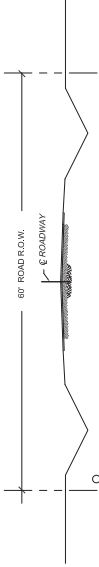
1. WATER LINE SHALL BE PROVIDED AND INSTALLED ACCORDING TO CURRENT SPECIFICATIONS OF THE GOVERNING WATER COMPANY.
2. WATER LINE SHALL BE SDR-26 PVC CLASS 160, ASTM D3139, ASTM F442, ASTM D3139.
3. ALL BENDS AND FITTINGS SHALL BE BACKED WITH CONCRETE AS SHOWN ON PLAN.
4. ALL JOINTS AND RESTRAINTS MUST BE USED WHERE DUCTILE IRON FITTINGS CONTACT CURB.
5. FIRE HYDRANTS SHALL BE INSTALLED WITHIN THE STREET TO MARK THE LOCATION OF NEW FIRE HYDRANTS.
6. PROVIDE TRACER WIRE FOR FULL LENGTH OF WATER LINES.
7. WHERE WATER LINES CROSS SEWER LINES, THE WATER LINE MUST BE 1' ABOVE THE SEWER LINE.
8. PIPING FITTINGS AND FIRE HYDRANTS SHALL CONFORM TO APPLICABLE AWWA AND/OR NSF STANDARDS.
9. WATER TEST SHALL BE 125 PSI FOR 2HRS. AND SPW SHALL BE 75 PSI FOR 2HRS. TAMMANY UTILITIES TO BE NOTIFIED 48 HRS PRIOR TO SCHEDULE TEST.
10. THE PROPOSED WATER DISTRIBUTION SYSTEM WILL BE FLOUSED AND DISINFECTED IN ACCORDANCE WITH LAC 51: XI, 355.A.
11. A MINIMUM HORIZONTAL AND VERTICAL SEPARATION OF 6" AND 18" RESPECTIVELY, SHALL BE MAINTAINED BETWEEN WATER LINES AND SEWER LINES. THE EDGE OF ANY SEWER MANHOLE, MET WELLS, FORCE MAINS, AND GRAVITY MAINS, TRENCH WALLS SHALL BE POLISHED GRANITE AND UNBROKEN MATERIAL. WHERE TRENCH WALL HAS BEEN DISTURBED, ECCAVATE ALL LOOSE MATERIAL AND EXTEND THRUST BLOCK TO UNDISTURBED MATERIAL.
12. THRUST BLOCKS SHALL BE POLISHED GRANITE AND UNBROKEN MATERIAL. WHERE TRENCH WALL HAS BEEN DISTURBED, ECCAVATE ALL LOOSE MATERIAL AND EXTEND THRUST BLOCK TO UNDISTURBED MATERIAL.
13. BACKFILL SHALL CONSIST OF CLEAN SAND.
14. ALL THRUST BLOCKS SHALL BE CAST IN PLACE WITH 2500 P.S.I. CONCRETE.
15. CONTRACTOR TO COORDINATE METER CONSTRUCTION WITH TAMMANY UTILITIES. IN ACCORDANCE WITH LAC 51: XI, 355.A.
16. CONTRACTOR TO REFER TO TAMMANY UTILITIES STANDARD DETAIL SHEET.
17. ALL FIRE HYDRANTS TO BE 1" INSIDE R.O.W.
18. LENGTH OF WATER LINE = 2.867'
19. WATER LINE TO BE CONSTRUCTED ON BACKSIDE OF DITCH
20. ALL DRIVEWAY CROSSINGS TO BE BORED. 8" SDR-26 PVC CLASS 160, ASTM D3139, ASTM F442, ASTM D3139.



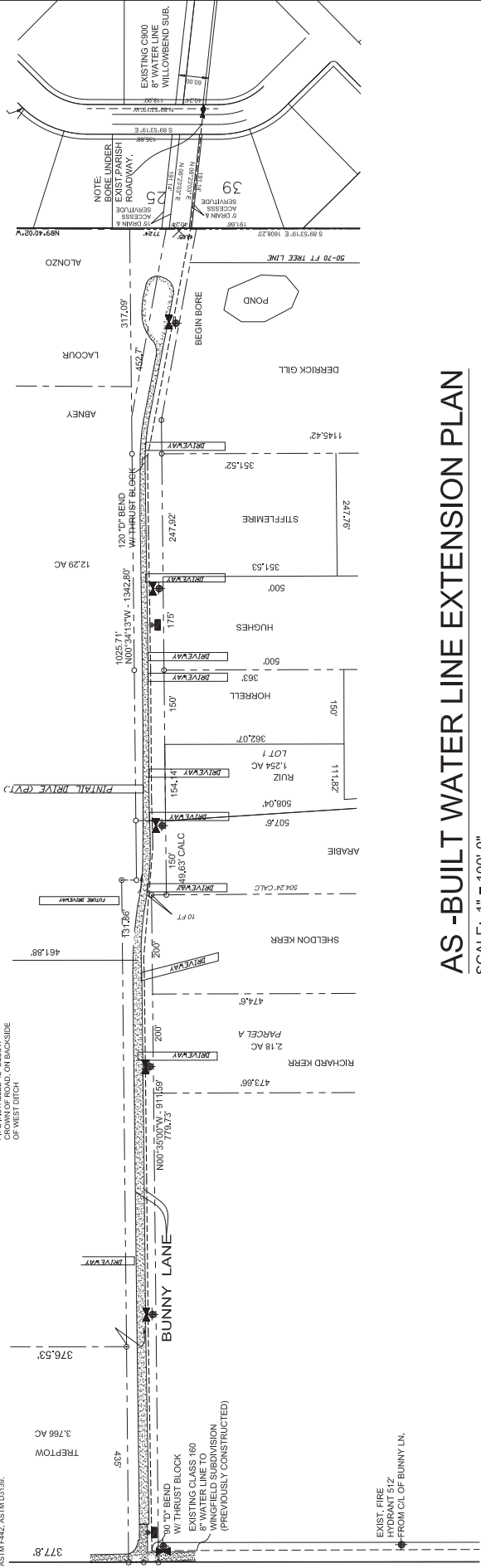
5 1/4" M.J. FIRE HYDRANT  
M.J.S. (MUELLER SUPER CENTURION OR EQUAL)

LEGEND	
	D.H.H. SAMPLE POINT
	FIRE HYDRANT WITH 8" MUELLER VALVE
	8" TAPPING SLEEVE AND VALVE
	--- REQUIRED CLASS 160, 8" WATER LINE
	FIRE HYDRANT VALVE

BUNNY LANE - CROSS SECTION  
NOT TO SCALE



ABOUT 1" WATER LINE.  
A. BORED - 2' BELOW BOTTOM OF DITCH.  
B. OPEN CUT - CLASS 160 PVC PIPE INSTALLED 42" BELOW SURFACE OF DITCH.  
C. BACKSIDE OF WEST DITCH



AS-BUILT WATER LINE EXTENSION PLAN

SCALE: 1" = 100'-0"

Date	Description	Issue
10-11-19	AS BUILT	A
11-25-19	REVISED	B
12-9-19		C



AS - BUILT  
WINGFIELD SUBDIVISION, PHASE 1  
JOINER WYMER ROAD  
ST. TAMMANY PARISH

ARROW ENGINEERING  
& CONSULTING  
DARRELL FUSSELL, P.E.  
russell.d@uno.com

PO BOX 881  
Madisonville, LA 70447  
Phone: 985-237-3908

C 8.1

