

ST. TAMMANY PARISH COUNCIL

ORDINANCE

ORDINANCE CALENDAR NO: 5813                      ORDINANCE COUNCIL SERIES NO: \_\_\_\_\_

COUNCIL SPONSOR: STEFANCIK/BRISTER                      PROVIDED BY: LEGAL DEPARTMENT

INTRODUCED BY: \_\_\_\_\_                      SECONDED BY: \_\_\_\_\_

ON THE 4 DAY OF MAY , 2017

ORDINANCE AUTHORIZING THE PARISH OF ST. TAMMANY, THROUGH THE OFFICE OF THE PARISH PRESIDENT, TO ENTER INTO A SERVITUDE AGREEMENT WITH WASHINGTON-ST. TAMMANY ELECTRIC COOPERATIVE FOR ELECTRIC SERVICE TO THE MULTI-USE FACILITY (WARD 7, DISTRICT 11).

WHEREAS, it is the desire of St. Tammany Parish Government to grant a servitude to Washington-St. Tammany Electric Cooperative over, under and upon immovable property owned by Parish for the purpose of providing above and/or below ground electrical services to the Multi-Use Facility at the St. Tammany Advanced Campus; and

WHEREAS, St. Tammany Parish Government has determined that it is in the public interest to enter into the servitude agreement; and

WHEREAS, the electrical site plan attached hereto as Exhibit "A" depicts the property on which the servitude is to be granted.

THE PARISH OF ST. TAMMANY HEREBY ORDAINS: that the Office of the Parish President is authorized to enter into a servitude agreement with Washington-St. Tammany Electric Cooperative for grant of a servitude on certain property depicted on Exhibit "A" attached hereto for purposes of provided above and below ground electrical services to the Multi-Use Facility.

BE IT FURTHER ORDAINED: that the Office of the Parish President is authorized to exercise its discretion in granting a servitude on this property, together with all agreements and all transactions necessary to carry out the intent of this Ordinance.

BE IT FURTHER ORDAINED: that all actions previously taken by the Office of the Parish President to grant a servitude on the property are ratified and accepted accordingly.

REPEAL: All ordinances or parts of Ordinances in conflict herewith are hereby repealed.

SEVERABILITY: If any provision of this Ordinance shall be held to be invalid, such invalidity shall not affect other provisions herein which can be given effect without the invalid provision and to this end the provisions of this Ordinance are hereby declared to be severable.

EFFECTIVE DATE: This Ordinance shall become effective fifteen (15) days after adoption.

MOVED FOR ADOPTION BY: \_\_\_\_\_ SECONDED BY: \_\_\_\_\_

WHEREUPON THIS ORDINANCE WAS SUBMITTED TO A VOTE AND RESULTED IN THE FOLLOWING:

YEAS: \_\_\_\_\_

NAYS: \_\_\_\_\_

ABSTAIN: \_\_\_\_\_

ABSENT: \_\_\_\_\_

THIS ORDINANCE WAS DECLARED DULY ADOPTED AT A REGULAR MEETING OF THE PARISH COUNCIL ON THE 1 DAY OF JUNE , 2017 ; AND BECOMES ORDINANCE COUNCIL SERIES NO \_\_\_\_.

\_\_\_\_\_  
STEVE STEFANCIK, COUNCIL CHAIRMAN

ATTEST:

\_\_\_\_\_  
THERESA L. FORD, COUNCIL CLERK

\_\_\_\_\_  
PATRICIA P. BRISTER, PARISH PRESIDENT

Published Introduction: APRIL 26 , 2017

Published Adoption: \_\_\_\_\_, 2017

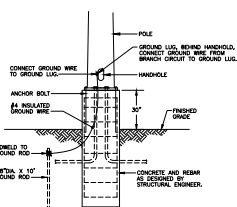
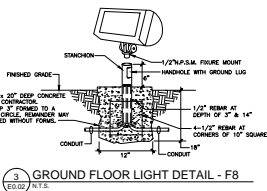
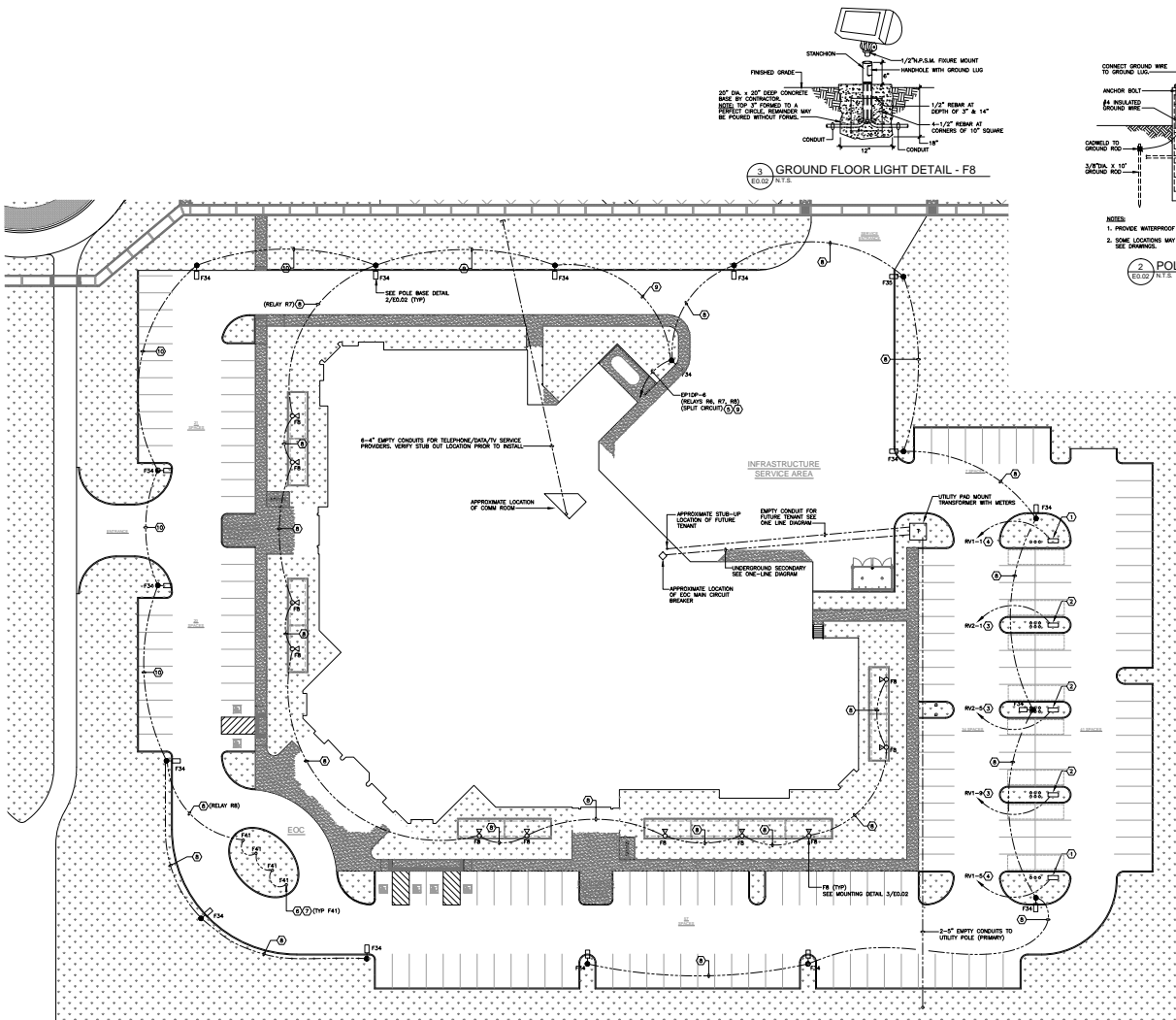
Delivered to Parish President: \_\_\_\_\_, 2017 at \_\_\_\_\_

Returned to Council Clerk: \_\_\_\_\_, 2017 at \_\_\_\_\_

### **Ordinance Administrative Comment**

ORDINANCE AUTHORIZING THE PARISH OF ST. TAMMANY, THROUGH THE OFFICE OF THE PARISH PRESIDENT, TO ENTER INTO A SERVITUDE AGREEMENT WITH WASHINGTON-ST. TAMMANY ELECTRIC COOPERATIVE FOR ELECTRIC SERVICE TO THE MULTI-USE FACILITY (WARD 7, DISTRICT 11).

The Parish seeks to enter into a servitude agreement with Washington-St. Tammany Electric Cooperative for the provision of electrical service to the Multi-Use Facility at St. Tammany Advanced Campus, which servitude shall include electric lines and a transformer pad in the locations depicted by the exhibit. No compensation is being exchanged in conjunction with this servitude, as the servitude is needed to provide electricity to the Multi-Use Facility.



- NOTES:
1. PROVIDE WATERPROOF TAP/PLUG KIT.
  2. SAME LOCATIONS MAY REQUIRE ADDITIONAL CONDUITS. SEE DRAWINGS.

- REFERENCE NOTES:
- ① SINGLE RY POWER PANEL, PEDESTAL MOUNT MURRAY
  - ② BACK TO BACK RY POWER PANEL, PEDESTAL MOUNT MURRAY
  - ③ 3/4" - 3/8" x 1/2" #4 DND
  - ④ 1 1/4" - 3/8" x 1/2" #4 DND
  - ⑤ ROUTE TRAP RELAYS IN LIGHTING CONTROL PANEL FOR ON/OFF CONTROL.
  - ⑥ PROVIDE WATERPROOF WIRING BOX PER MANUFACTURER'S INSTRUCTIONS. PROVIDE WATERPROOF CONNECTION FROM WIRING BOX TO GROUND LIGHT.
  - ⑦ PROVIDE IN GROUND LIGHT FOR MANUFACTURER'S INSTRUCTION IN EXISTING ON 3/4" DEEP RYS. SMALL RYS. PROVIDE 1/2" DRAIN PIPE AT TOP OF GROUND LIGHT TO DRAINAGE AREA.
  - ⑧ 3/4" - 3/8" x 1/2" #4 DND
  - ⑨ 1/4" - 3/8" x 1/2" #4 DND
  - ⑩ 3/4" - 3/8" x 1/2" #4 DND

① OVERALL SITE PLAN - ELECTRICAL  
SCALE: 1" = 25'-0"

The Hurricane Safe Room is designed to meet the requirements of FEMA P-361 Design and Construction Guidelines for Community Safe Rooms - Second Edition / August 2008 and will be constructed to withstand 150 MPH wind speed and windborne debris impacts for a 24-hour period.



RCLA  
Project Number: 21421  
Date Issued: 08-01-16  
Drawn By: SFL  
Checked By: RVL  
Revisions:

ST. TAMMANY PARISH  
SAFE ROOM & EOC FACILITY  
LOUISIANA HIGHWAY 434  
ST. TAMMANY PARISH, LOUISIANA

OVERALL SITE PLAN -  
ELECTRICAL

Sheet Number:  
E0.02