

ST. TAMMANY PARISH COUNCIL

ORDINANCE

ORDINANCE CALENDAR NO: 5962

ORDINANCE COUNCIL SERIES NO: _____

COUNCIL SPONSOR: MR. TOLEDANO

PROVIDED BY: COUNCIL OFFICE

INTRODUCED BY: MR. LORINO

SECONDED BY: MR. DEAN

ON THE 5 DAY OF APRIL , 2018

ORDINANCE AUTHORIZING THE PARISH OF ST. TAMMANY, THROUGH THE OFFICE OF THE PARISH PRESIDENT, TO ACCEPT THE ACT OF DEDICATION AND DONATION OF PARK PLACE ROAD FOR INCLUSION INTO THE ROAD MAINTENANCE SYSTEM, WARD 3, DISTRICT 5 (AS DESCRIBED IN EXHIBIT A ATTACHED HERETO). (TOLEDANO)

WHEREAS, St. Tammany Parish Government desires to acquire certain immovable property which is the right of way for Park Place road as more specifically describe in Exhibit "A"; and

WHEREAS, there is a need and public purpose for the acceptance of an act of dedication and donation of the property comprising Park Place road; and

WHEREAS, the owners have agreed to dedicate and donate the property; and

WHEREAS, it is in the best interest of the public to accept the dedication and donations of said property.

THE PARISH OF ST. TAMMANY HEREBY ORDAINS: the Parish of St. Tammany Council accepts one or more Act(s) of dedication and donation of the property into the Parish road maintenance system inventory, which property is more particularly described in Exhibit "A",

BE IT FURTHER ORDAINED, that the Parish President is hereby authorized to exercise its discretion in acquiring the Property, together with execution of any and all documents necessary to perfect the dedication, donation, transfer and acceptance authorized herein.

REPEAL: All ordinances or parts of Ordinances in conflict herewith are hereby repealed.

SEVERABILITY: If any provision of this Ordinance shall be held to be invalid, such invalidity shall not affect other provisions herein which can be given effect without the invalid provision and to this end the provisions of this Ordinance are hereby declared to be severable.

EFFECTIVE DATE: This Ordinance shall become effective fifteen (15) days after adoption.

MOVED FOR ADOPTION BY: _____ SECONDED BY: _____

WHEREUPON THIS ORDINANCE WAS SUBMITTED TO A VOTE AND RESULTED IN THE FOLLOWING:

YEAS: _____

NAYS: _____

ABSTAIN: _____

ABSENT: _____

THIS ORDINANCE WAS DECLARED DULY ADOPTED AT A REGULAR MEETING OF THE PARISH COUNCIL ON THE 3 DAY OF MAY , 2018 ; AND BECOMES ORDINANCE COUNCIL SERIES NO _____.

S. MICHELE BLANCHARD, COUNCIL CHAIRMAN

ATTEST:

THERESA L. FORD, COUNCIL CLERK

PATRICIA P. BRISTER, PARISH PRESIDENT

Published Introduction: MARCH 28 , 2018

Published Adoption: _____ , 2018

Delivered to Parish President: _____ , 2018 at _____

Returned to Council Clerk: _____ , 2018 at _____

EXHIBIT "A"

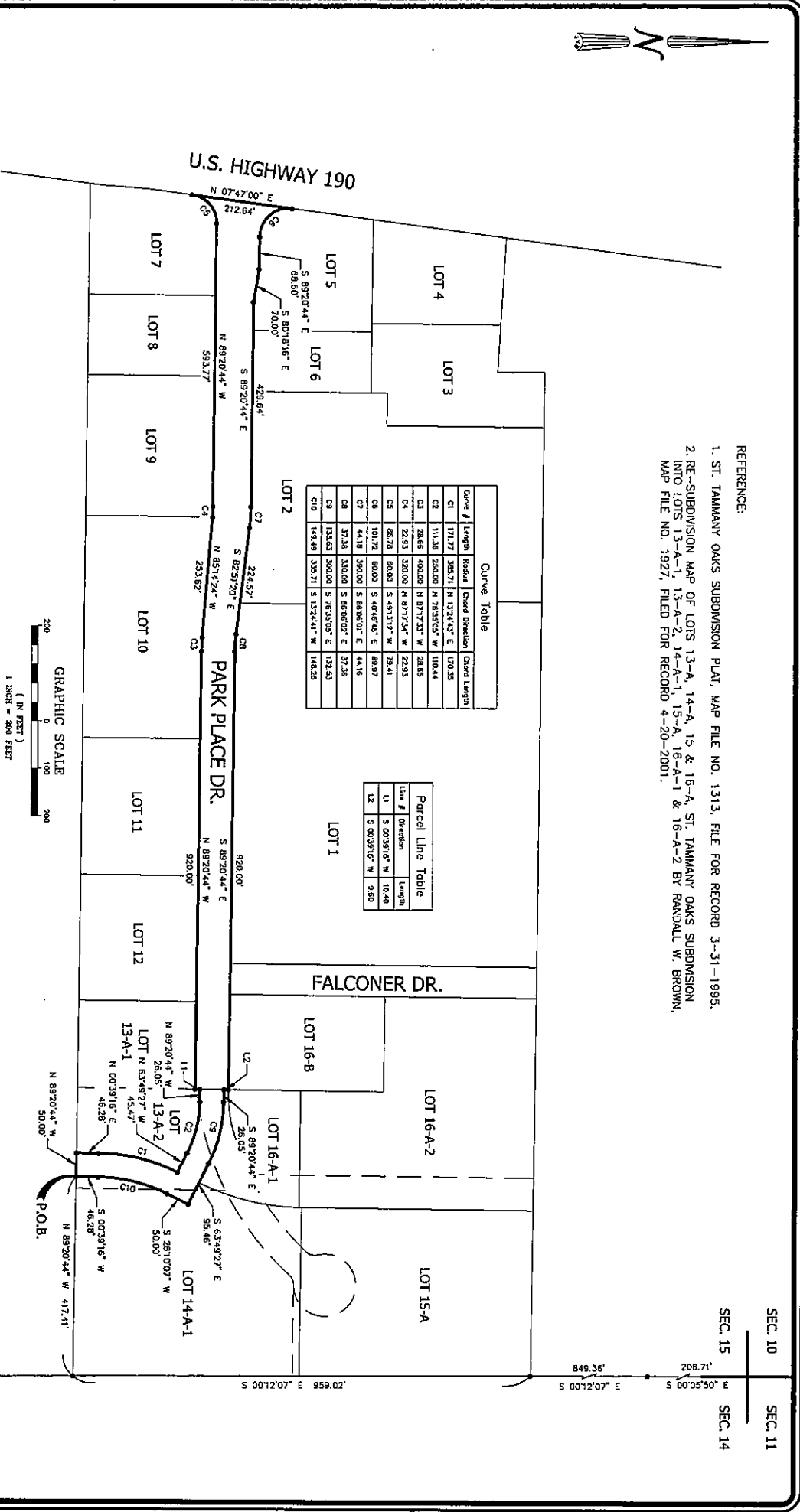


SCALE: 1" = 200'
 DATE: 03.28.2018
 DRAWN BY: RMK
 CHECKED BY: SMB
 DWG. NO: 20180210
 SHEET 1 OF 1

SKETCH MAP OF
 A PORTION OF GROUND SITUATED IN
 SECTION 15, T-7-S, R-11-E,
 ST. TAMMANY PARISH, LOUISIANA
 KINGSMILL PROPERTIES
 & MANAGEMENT

J.V. Burkes & Associates, Inc.
 SURVEYING ENGINEERING • ENVIRONMENTAL
 1805 Shortall Highway
 Shidell, Louisiana 70458
 E-mail: jvb@jvburkes.com
 Phone: 985-649-0075 Fax: 985-649-0154

SEAN M. BURKES
 LA REG. NO. 4785



- REFERENCE:
 1. ST. TAMMANY OAKS SUBDIVISION PLAT, MAP FILE NO. 1313, FILE FOR RECORD 3-31-1995.
 2. RE-SUBDIVISION MAP OF LOTS 13-A, 14-A, 15 & 16-A, ST. TAMMANY OAKS SUBDIVISION, INTO LOTS 13-A-1, 13-A-2, 14-A-1, 15-A, 15-A-1 & 16-A-2 BY RANDALL W. BROWN, MAP FILE NO. 1927, FILED FOR RECORD 4-20-2001.

SEC. 10
 SEC. 11
 SEC. 15
 SEC. 14

EXHIBIT 'A'

J. V. Burkes & Associates, Inc.

1805 Shortcut Highway, Slidell, La

Phone (985) 649-0075 ♦ Fax (985) 649-0154

Engineering ♦ Surveying ♦ Environmental

March 28, 2018

Legal Description for

PARK PLACE DRIVE

**BEING A PORTION OF GROUND SITUATED IN SECTION 15,
TOWNSHIP 7 SOUTH, RANGE 11 EAST, ST. TAMMANY PARISH, LOUISIANA**

A CERTAIN PIECE OR PORTION OF GROUND SITUATED IN SECTION 15, TOWNSHIP 7 SOUTH, RANGE 11 EAST, ST. TAMMANY PARISH, LOUISIANA AND BEING MORE FULLY DESCRIBED AS FOLLOWS:

COMMENCING AT THE SECTION CORNER COMMON TO SECTIONS 10, 11, 14 AND 15, TOWNSHIP 7 SOUTH, RANGE 11 EAST, ST. TAMMANY PARISH, LOUISIANA GO ALONG THE SECTION LINE DIVIDING SECTIONS 14 AND 15, SOUTH 00 DEGREES 05 MINUTES 50 SECONDS EAST A DISTANCE OF 208.71 FEET; THENCE CONTINUE ALONG SAID SECTION LINE, SOUTH 00 DEGREES 12 MINUTES 07 SECONDS EAST A DISTANCE OF 1808.38 FEET; THENCE NORTH 89 DEGREES 20 MINUTES 44 SECONDS WEST A DISTANCE OF 417.41 FEET TO THE POINT OF BEGINNING.

FROM THE POINT OF BEGINNING, THENCE NORTH 89 DEGREES 20 MINUTES 44 SECONDS WEST A DISTANCE OF 50.00 FEET TO A POINT; THENCE NORTH 00 DEGREES 39 MINUTES 16 SECONDS EAST A DISTANCE OF 46.28 FEET TO A POINT; THENCE ALONG A CURVE TO THE RIGHT HAVING A RADIUS OF 385.71 FEET AND AN ARC LENGTH OF 171.77 FEET (CHORD-NORTH 13 DEGREES 24 MINUTES 43 SECONDS EAST A DISTANCE OF 170.35 FEET) TO A POINT; THENCE NORTH 63 DEGREES 49 MINUTES 27 SECONDS WEST A DISTANCE OF 45.47 FEET TO A POINT; THENCE ALONG A CURVE TO THE LEFT HAVING A RADIUS OF 250.00 FEET AND AN ARC LENGTH OF 111.36 FEET (CHORD-NORTH 76 DEGREES 35 MINUTES 05 SECONDS WEST A DISTANCE OF 110.44 FEET) TO A POINT; THENCE NORTH 89 DEGREES 20 MINUTES 44 SECONDS WEST A DISTANCE OF 26.05 FEET TO A POINT; THENCE SOUTH 00 DEGREES 39 MINUTES 16 SECONDS WEST A DISTANCE OF 10.41 FEET TO A POINT; THENCE NORTH 89 DEGREES 20 MINUTES 44 SECONDS WEST A DISTANCE OF 920.00 FEET TO A POINT; THENCE ALONG A CURVE TO THE RIGHT HAVING A RADIUS OF 400.00 FEET AND AN ARC LENGTH OF 28.66 FEET (CHORD-NORTH 87 DEGREES 17 MINUTES 33 SECONDS WEST A DISTANCE OF 28.65 FEET) TO A POINT; THENCE NORTH 85 DEGREES 14 MINUTES 24 SECONDS WEST A DISTANCE OF 253.62 FEET TO A POINT; THENCE ALONG A CURVE TO THE LEFT HAVING A RADIUS OF 320.00 FEET AND AN ARC LENGTH OF 22.93 FEET (CHORD-NORTH 87 DEGREES 17 MINUTES 34 SECONDS WEST A DISTANCE OF 22.93 FEET) TO A POINT; THENCE NORTH 89 DEGREES 20 MINUTES 44 SECONDS WEST A DISTANCE OF 593.77 FEET TO A POINT; THENCE ALONG A CURVE TO THE LEFT HAVING A RADIUS OF 60.00 FEET AND AN ARC LENGTH OF 86.78 FEET (CHORD-SOUTH 49 DEGREES 13 MINUTES 12 SECONDS WEST A DISTANCE OF 79.41 FEET) TO A POINT; THENCE NORTH 07 DEGREES 47 MINUTES 00 SECONDS EAST A DISTANCE OF 212.64 FEET TO A POINT; THENCE ALONG A CURVE TO THE LEFT HAVING A RADIUS OF 60.00 FEET AND AN ARC LENGTH OF 101.72 FEET (CHORD-SOUTH 40 DEGREES 46 MINUTES 48 SECONDS EAST A DISTANCE OF 89.97 FEET) TO A POINT; THENCE SOUTH 89 DEGREES 20 MINUTES 44 SECONDS EAST A DISTANCE OF 68.60 FEET TO A POINT; THENCE SOUTH 80 DEGREES 18 MINUTES 16 SECONDS EAST A DISTANCE OF 70.00 FEET TO A POINT; THENCE SOUTH 89 DEGREES 20 MINUTES 44 SECONDS EAST FOR A DISTANCE OF 429.64 FEET TO A POINT; THENCE ALONG A CURVE TO THE RIGHT HAVING A RADIUS OF 390.00 FEET AND AN ARC LENGTH OF 44.18 FEET

(CHORD-SOUTH 86 DEGREES 06 MINUTES 01 SECONDS EAST A DISTANCE OF 44.16 FEET) TO A POINT; THENCE SOUTH 82 DEGREES 51 MINUTES 20 SECONDS EAST FOR A DISTANCE OF 224.57 FEET TO A POINT; THENCE ALONG A CURVE TO THE LEFT HAVING A RADIUS OF 330.00 FEET AND AN ARC LENGTH OF 37.38 FEET (CHORD-SOUTH 86 DEGREES 06 MINUTES 02 SECONDS EAST A DISTANCE OF 37.36 FEET) TO A POINT; THENCE SOUTH 89 DEGREES 20 MINUTES 44 SECONDS EAST A DISTANCE OF 920.00 FEET TO A POINT; THENCE SOUTH 00 DEGREES 39 MINUTES 16 SECONDS WEST FOR A DISTANCE OF 9.60 FEET TO A POINT; THENCE SOUTH 89 DEGREES 20 MINUTES 44 SECONDS EAST A DISTANCE OF 26.05 FEET TO A POINT; THENCE ALONG A CURVE TO THE RIGHT HAVING A RADIUS OF 300.00 FEET AND AN ARC LENGTH OF 133.63 FEET (CHORD-SOUTH 76 DEGREES 35 MINUTES 05 SECONDS EAST A DISTANCE OF 132.53 FEET TO A POINT; THENCE SOUTH 63 DEGREES 49 MINUTES 27 SECONDS EAST FOR A DISTANCE OF 95.46 FEET TO A POINT; THENCE SOUTH 26 DEGREES 10 MINUTES 07 SECONDS WEST A DISTANCE OF 50.00 FEET TO A POINT; THENCE ALONG A CURVE TO THE LEFT HAVING A RADIUS OF 335.71 FEET AND AN ARC LENGTH OF 149.49 FEET (CHORD-SOUTH 13 DEGREES 24 MINUTES 41 SECONDS WEST A DISTANCE OF 148.26 FEET) TO A POINT; THENCE SOUTH 00 DEGREES 39 MINUTES 16 SECONDS WEST A DISTANCE OF 46.28 FEET BACK TO THE POINT OF BEGINNING.

SAID PORTION OF GROUND CONTAINS 3.781 ACRES MORE OR LESS.