

ST. TAMMANY PARISH COUNCIL

RESOLUTION

RESOLUTION COUNCIL SERIES NO: C-6007

COUNCIL SPONSOR: DEAN

PROVIDED BY: COUNCIL

RESOLUTION TO VACATE IN PART, THE 6 MONTH MORATORIUM ON PROPERTY LOCATED WITHIN A PORTION OF THE BAYOU DE ZAIRE BASIN AND A PORTION OF THE FLOWERS BAYOU BASIN SOUTH OF I-12 BEING THE STORM SEWER SYSTEM THAT FLOWS INTO THE FLOWERS BAYOU BASIN (WARD 1, DISTRICT 1) (DEAN)

WHEREAS, on October 5, 2017 the Parish Council adopted Ordinance C.S. No. 17-3797 imposing a six (6) month moratorium on receipt of submissions by the Parish Planning and Zoning Commission for the re-subdivision or re-zoning of property and/or on the issuance of permits by the Parish Department of Planning and Development/Permits for the construction or placement of any building structures on property within a portion of the Bayou De Zaire and a portion of the Flowers Bayou Basin south of I-12 being the storm sewer that flows into the Flowers Bayou Basin; and

WHEREAS, the following property is being released from the moratorium

6.568 acres - Madisonville Elementary School campus south of C.S. Owens Road (Section 14, Township 7 South, Range 10 East St. Tammany Parish) (see exhibit A)

5.49 acres (Lot 12A) - Madisonville Elementary School campus north of C.S. Owens Road (Section 14, Township 7 South, Range 10 East St. Tammany Parish) (see exhibit B)

WHEREAS, it has been determined that construction at this location will not have an adverse affect in this area.

THE PARISH OF ST. TAMMANY HEREBY RESOLVES that pursuant to Chapter 2, Article XVI, Sec. 2-624 of the Code of Ordinances, the Parish Council vacates, in part, the moratorium established by Ordinance C.S. No. 17-3797 and any subsequent extensions thereof, to remove there from the restriction on the issuance of permits for construction or placement of any building structures on:

6.568 acres - Madisonville Elementary School campus south of C.S. Owens Road (Section 14, Township 7 South, Range 10 East St. Tammany Parish) (see exhibit A)

5.49 acres (Lot 12A) - Madisonville Elementary School campus north of C.S. Owens Road (Section 14, Township 7 South, Range 10 East St. Tammany Parish) (see exhibit B)

The above mentioned properties are located within a portion of the Bayou De Zaire Basin and a portion of the Flowers Bayou Basin south of I-12 being the storm system that flows into the Flowers Bayou Basin, Ward 1, District 1.

THIS RESOLUTION HAVING BEEN SUBMITTED TO A VOTE, THE VOTE THEREON WAS AS FOLLOWS:

MOVED FOR ADOPTION BY: \_\_\_\_\_ SECONDED BY: \_\_\_\_\_

YEAS: \_\_\_\_\_

NAYS: \_\_\_\_\_

ABSTAIN: \_\_\_\_\_

ABSENT: \_\_\_\_\_

THIS RESOLUTION WAS DECLARED ADOPTED ON THE 1 DAY OF NOVEMBER , 2018,  
AT A REGULAR MEETING OF THE PARISH COUNCIL, A QUORUM OF THE MEMBERS BEING  
PRESENT AND VOTING.

---

S. MICHELE BLANCHARD, COUNCIL CHAIRMAN

ATTEST:

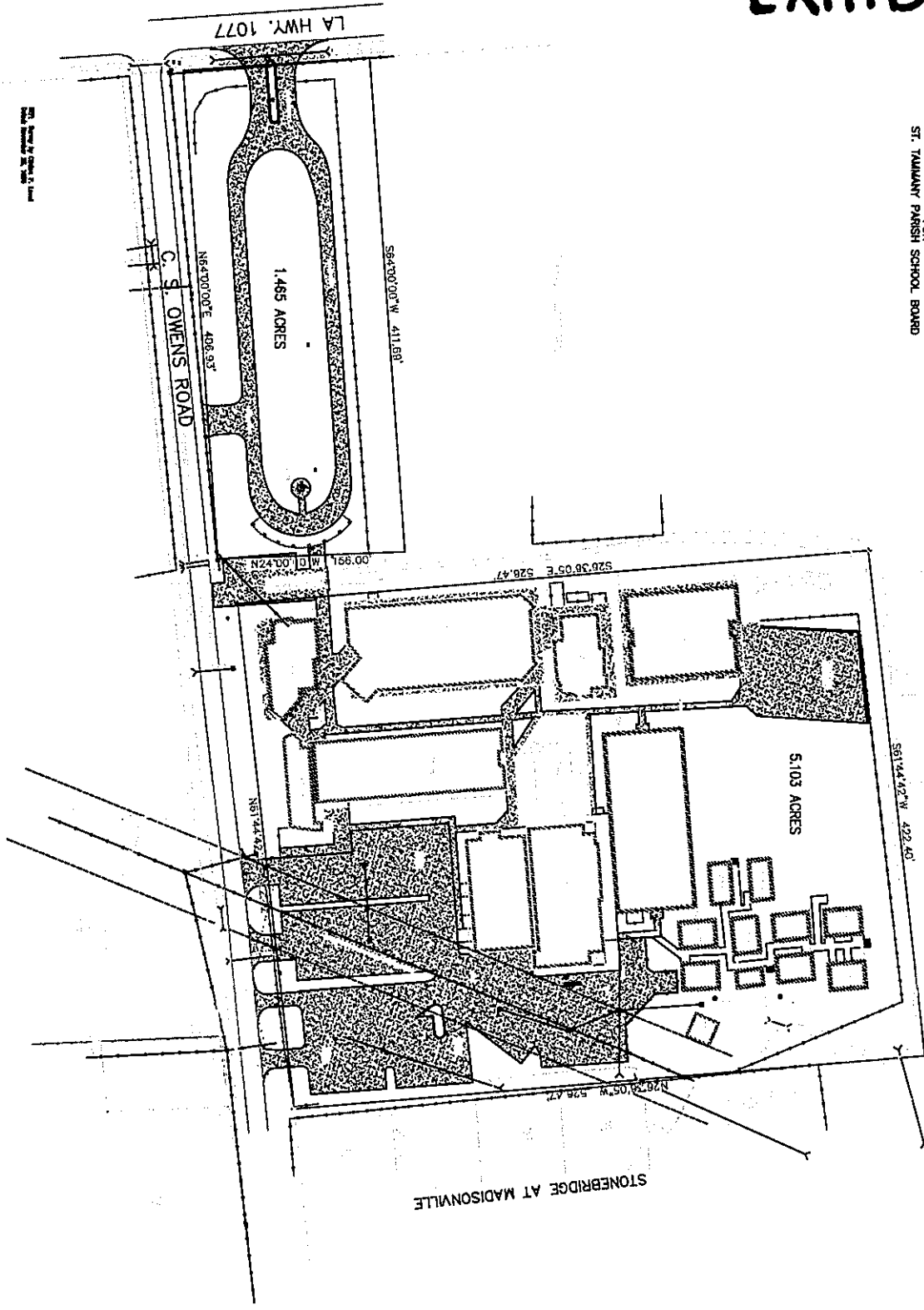
---

THERESA L. FORD, COUNCIL CLERK

# EXHIBIT A

Survey of  
**MADISONVILLE ELEMENTARY SCHOOL**  
 SECTION 14, TOWNSHIP 7 SOUTH - RANGE 10 EAST  
 ST. TAMMANY PARISH, LOUISIANA  
 ST. TAMMANY PARISH SCHOOL BOARD

STONEBRIDGE AT MADISONVILLE



ALL RIGHTS RESERVED BY RANDALL W. BROWN & ASSOCIATES, INC. FOR THE SURVEYOR'S SERVICES. NO PART OF THIS SURVEY MAY BE REPRODUCED OR TRANSMITTED IN ANY FORM OR BY ANY MEANS, ELECTRONIC OR MECHANICAL, WITHOUT PERMISSION IN WRITING FROM RANDALL W. BROWN & ASSOCIATES, INC.

Scale: 1" = 100' ±

This map is for general information only and does not constitute a contract. The actual survey shall be the only authority for the location of the property lines.



DATE: _____	DATE: _____
SCALE: _____	SCALE: _____
SURVEY NO. _____	SURVEY NO. _____
REVISION DATE: _____	REVISION DATE: _____

**MADISONVILLE ELEMENTARY SCHOOL**  
 SECTION 14, TOWNSHIP 7 SOUTH-RANGE 10 EAST  
 ST. TAMMANY PARISH, LOUISIANA

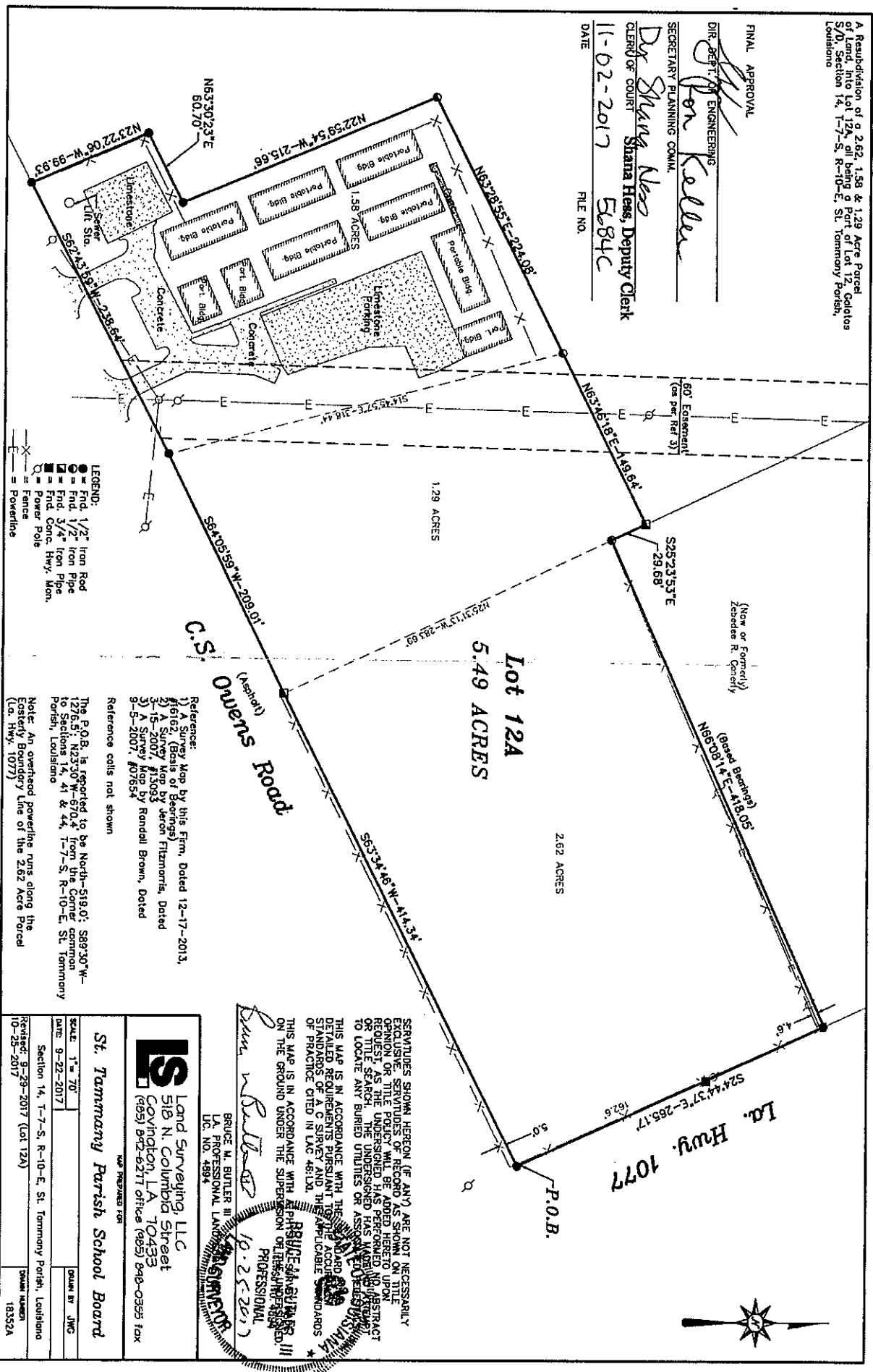
**RANDALL W. BROWN & ASSOCIATES, INC.**  
 PROFESSIONAL LAND SURVEYORS • PLANNERS • CONSULTANTS  
 588 W. CAUSEWAY APPROACH, MADISONVILLE, LA 70448  
 (985) 834-6388 • FAX(985) 834-6300

SHEET

# EXHIBIT B

A Re-subdivision of 9.262, 1.58 & 1.29 Acre Parcel of Land into Lot 12A, Part of 1st 1/2 Section 14, T-7-S, R-10-E, St. Tammany Parish, Louisiana

FINAL APPROVAL  
 DIR. OF ENGINEERING  
 SECRETARY PLANNING COMM.  
 DIR. SHIRLEY KELLER  
 CLERK OF COURT  
 DATE 11-02-2017  
 FILE NO. 584C  
 Shanna Hess, Deputy Clerk



**St. Tammany Parish School Board**

Land Surveying, LLC  
 518 N. Columbia Street  
 Covington, LA 70433  
 (985) 842-8217 office (985) 848-0333 fax

SCALE: 1" = 70'  
 DATE: 9-22-2017  
 Section 14, T-7-S, R-10-E, St. Tammany Parish, Louisiana  
 Revised: 9-29-2017 (Lot 12A)  
 10-22-2017  
 DANA NIKER  
 18352A

10-22-2017